

**FPL ENERGY ASHTABULA WIND, LLC
LIVERNE, NORTH DAKOTA**

**SUBSTATION & TRANSMISSION LINE
Plan of the Day (POD)**

Weather Forecast: **Mostly Cloudy**
High: 73°F Low: 46°F
Winds: NW @ 13 mph
Precipitation Chances: 39%

Tuesday, September 23, 2008

FPL Energy Otter Tail Power Company MJ Electric

Substation

- 230 Jumpers, 34.5 jumpers
- Terminate control house PT'S
- Above ground grounding misc ground grid
- Station lighting on Static masts –as soon as it dries up

Lay-down Yard

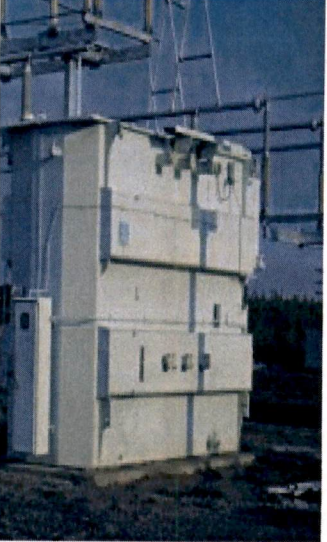
Electrical Construction

- No work due to rain

Miscellaneous

<i>RECEIVING (As of COB yesterday)</i>			
Substation Materials	Total	Rec'd	Balance
Power Transformer 241.5 kV/225 MVA	1	1	0
Power Transformer 69kV/125MVA (Lease)	1	1	0
HV Motor Disconnect Switch - 230kV 1200A	2	2	0
HV Manual Disconnect Switch 230kV 1200A	3	3	0
LV Manual Disconnect Switch 34.5kV 2000A	4	4	0
LV Manual Disconnect Switch 34.5kV 4000A	1	1	0
LV Manual Disconnect Switch 34.5kV 1200A	10	10	0
LV Hook Disconnect Switch 34.5kV 1200A	60	60	0
HV Circuit Breaker 230kV 1200A	2	2	0
LV Open Air Breaker 34.5 kV 2000A 40 kA	2	2	0
LV Open Air Breaker 34.5 kV 1200A 40 kA	10	10	0
Switchgear with Building	1	1	0
Control House	1	1	0
HV CCVTs 230kV	3	3	0
HV CCVTs 69kV	3	3	0
Metering Units	1	0	1
Metering Units CT	3	0	3
Metering Units PT	3	0	3
Support Steel and Substation Package	1 Lot	1	0
Neutral Reactor	1	1	0
SUBSTATION CONSTRUCTION			% Complete
Galvanized Steel Structures			100%
Rigid Bus System (FT)			100%
Flexible Bus Jumper			68%
Insulators			100%
Disconnect Switches			100%
Surge Protectors			100%
Circuit Breakers			100%
CCVTs, Metering CTs and PTs			85%
Conduit - Below Grade			100%
Conduit - Above Grade			96%
Cable Trenwa System			100%
Equipment Cable Installation (# of runs)			89%
Equipment Cable Termination			69%
Conduit, Ground Bank, Fiber Enc., UG Cable, St Srv, Xfmr			80%
Crushed Rock Surfacing			0%
Grounding - Below Grade			99%
Grounding - Above Grade			60%
Station Lighting			50%
Sub Signage and Fence			0%
Foundations			100%
Testing			0%

Interconnect Transmission Line



T-LINE CONSTRUCTION	Complete	Balance	% Complete
Tangent (laminated) foundations excavated	74	0	100%
Tangent (laminated) structures framed	74	0	100%
Tangent (laminated) structures set	74	0	100%
Dead-end/angle foundations excavated	14	0	100%
Dead-end/angle foundations poured	14	0	100%
Dead-end/angle (steel) structures framed	14	0	100%
Dead-end/angle (steel) structures set	14	0	100%
Spans of 1272 Bitem conductor strung	267	0	100%
Spans of 1272 Bitem sagged and clipped	267	0	100%
Spans of OPGW strung, attached and grounded	89	0	100%
OPGW splices/terminations completed	0	4	0%
Miles of distribution line leaned	6	0	100%
Miles of distribution line dismantled & removed	5.9	0.1	98%
Foundation excavation spoils disposed	88	0	100%
Reclamation	0	100%	0%

Plan of the Day contents shall not be forwarded or distributed without prior written consent of FPLE

190 PU-08-32 Filed: 9/23/2008 Pages: 1
 Ashtabula Wind, Substation, Plan of the Day, Sept. 23, 2008
 Ashtabula Wind, LLC