

FPL ENERGY ASHTABULA WIND, LLC
LUVERNE, NORTH DAKOTA

Plan of the Day (POD)

Weather Forecast: Mostly Cloudy
High: 75 F Low: 45°F
Winds: SE @ 6 mph
Precipitation Chances: 20%

Friday, September 26, 2008

COD - 12/31/08

97 Days to COD

FPL Energy	Otter Tail	Blattner	GEWE
-------------------	-------------------	-----------------	-------------

Environmental:

- SWPPP inspection October 2nd
- Developing wetland impact prevention plan and maps
- Monitor environmentally sensitive areas
- Environmental awareness to ALL crews, including sub-contractors
- Silt fence installation

Safety:

- Check back-up alarms daily and report.
- Observe speed limits.
- Wear all required PPE.
- Maintain hydration.
- Watch soft spots when off-loading trucks.

Civil:

- Gravel at AT114-AT117, AT105-AT108
- Install bottom rebar mats complete
- Install anchor bolts at AT127 & AT129
- Install top rebar mats at AT124, AT130 & AT131
- Form base at AT123, AT124 & AT131
- Pour base at AT122 & AT123
- Form pedestal at AT114 & AT115
- Pour pedestal at AT114 & AT115
- Backfill at AT98 & AT99
- Build crane pads at AT22-AT26 & AT14-16

Electrical:

- Contoller termination at AT17 – AT19
- Box pad installation at AT91-AT93
- PMT at AT1 & AT73

Collection:

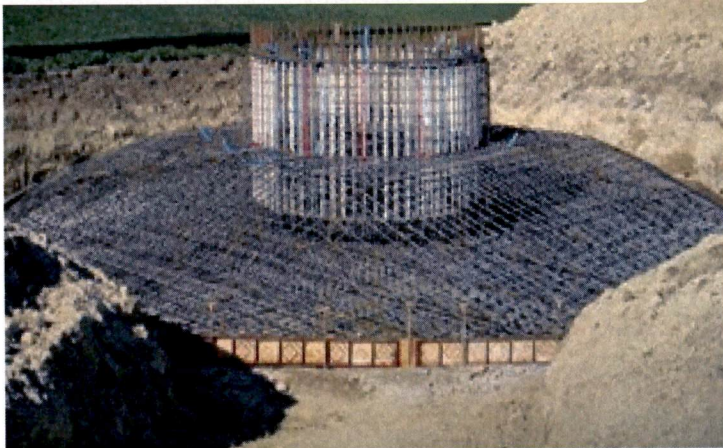
- Cable install -4/0 at SP204-AT90
- Cable install 1000 at SP804-SP805, SP903-SP904
- Cable splicing at SP803X
- High voltage cable termination at AT1, AT4-AT7

Receiving (As of COB yesterday)			
	Total	Rec'd	Balance
PMT XFR	99	100	-1
Grounding XFR	7	7	0
4/0 Cable	588,000	652,693	-64,693
1000KM	396,000	406,689	-10,689
500KM	99,000	102,642	-3,642
12 Fiber SM	385,000	371,758	13,242
1000 KCM (LVC)	37,000	35,175	1,825
Grounding XFR boxp	8	8	0
XFR Box Pads	100	100	0
Copperclad Cable	108,000	108,917	-917
Bases	99	2	97
Mids	99	2	97
Tops	99	2	97
Machine Heads	99	0	99
Contollers (DTA's)	99	8	91
Blade Sets	99	3	96
Hubs	99	3	96

General Construction Status

200 PU-08-32 Filed: 9/26/2008 Pages: 1
 Ashtabula Wind, Plan of the Day, Sept. 26, 2008

Ashtabula Wind, LLC



	Total	Complete	% Complete
Roads Subgraded LF	117,819	115,464	98.0%
Roads Complete LF	117,819	83,686	71.0%
Foundations Excavated	99	99	100.0%
Foundations Poured	99	87	87.9%
Foundations Backfilled	99	68	68.7%
Crane Pads Complete	99	19	19.2%
Tower Base Sections Erected	99	0	0.0%
Tower Mid Sections Erected	99	0	0.0%
Tower Top Sections Erected	99	0	0.0%
Machine Heads Installed	99	0	0.0%
Rotors Flown	99	0	0.0%
Mechanically Completed	99	0	0.0%
Pre-Commissioned	99	0	0.0%
Final Commissioned	99	0	0.0%
Cable Installed 4/0	586,473	237,300	40.5%
Cable Installed 1000 KM	435,303	285,357	65.6%
Cable Installed 500 KM	106,005	53,790	50.7%
Fiber-Optic 12 Fiber SM	385,000	159,857	41.5%
Copperclad Cable	108,000	0	
Transformers Set	99	38	38.4%
Transformers Terminated	99	0	0.0%
(as of COB yesterday)			

Plan of the Day contents shall not be forwarded or distributed without prior written consent of FPLE