

Thursday, October 9, 2008

**FPL ENERGY ASHTABULA WIND, LLC
LIVERNE, NORTH DAKOTA**

**SUBSTATION & TRANSMISSION LINE
Plan of the Day (POD)**

Weather Forecast: **Sunny**
High: **59°F** Low: **35°F**
Winds: **W @ 11 mph**
Precipitation Chances: **0%**

FPL Energy Otter Tail Power Company MJ Electric

Substation

Lay-down Yard

- Rock surfacing

Electrical Construction

- Complete

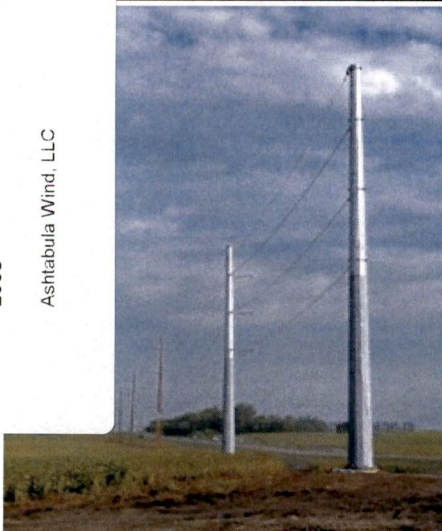
Miscellaneous

- Waiting for final inspection
- MJ's loading equipment

| <i>RECEIVING (As of COB yesterday)</i> | | | |
|--|-------|-------|------------|
| Substation Materials | Total | Rec'd | Balance |
| Power Transformer 241.5 kV/225 MVA | 1 | 1 | 0 |
| Power Transformer 69kV/125MVA (Lease) | 1 | 1 | 0 |
| HV Motor Disconnect Switch - 230kV 1200A | 2 | 2 | 0 |
| HV Manual Disconnect Switch 230kV 1200A | 3 | 3 | 0 |
| LV Manual Disconnect Switch 34.5kV 2000A | 4 | 4 | 0 |
| LV Manual Disconnect Switch 34.5kV 4000A | 1 | 1 | 0 |
| LV Manual Disconnect Switch 34.5kV 1200A | 10 | 10 | 0 |
| LV Hook Disconnect Switch 34.5kV 1200A | 60 | 60 | 0 |
| HV Circuit Breaker 230kV 1200A | 2 | 2 | 0 |
| LV Open Air Breaker 34.5 kV 2000A 40 kA | 2 | 2 | 0 |
| LV Open Air Breaker 34.5 kV 1200A 40 kA | 10 | 10 | 0 |
| Switchgear with Building | 1 | 1 | 0 |
| Control House | 1 | 1 | 0 |
| HV CCVTs 230kV | 3 | 3 | 0 |
| HV CCVTs 69kV | 3 | 3 | 0 |
| Metering Units | 1 | 0 | 1 |
| Metering Units CT | 3 | 0 | 3 |
| Metering Units PT | 3 | 0 | 3 |
| Support Steel and Substation Package | 1 Lot | 1 | 0 |
| Neutral Reactor | 1 | 1 | 0 |
| SUBSTATION CONSTRUCTION | | | % Complete |
| Galvanized Steel Structures | | | 100% |
| Rigid Bus System (FT) | | | 100% |
| Flexible Bus Jumper | | | 100% |
| Insulators | | | 100% |
| Disconnect Switches | | | 100% |
| Surge Protectors | | | 100% |
| Circuit Breakers | | | 100% |
| CCVTs, Metering CTs and PTs | | | 88% |
| Conduit - Below Grade | | | 100% |
| Conduit - Above Grade | | | 100% |
| Cable Trenwa System | | | 100% |
| Equipment Cable Installation (# of runs) | | | 100% |
| Equipment Cable Termination | | | 98% |
| Conduit, Ground Bank, Fiber Enc., UG Cable, St Svc, Xfmr | | | 100% |
| Crushed Rock Surfacing | | | 80% |
| Grounding - Below Grade | | | 100% |
| Grounding - Above Grade | | | 90% |
| Station Lighting | | | 100% |
| Sub Signage and Fence | | | 60% |
| Foundations | | | 100% |
| Testing | | | 50% |

Interconnect Transmission Line

| T-LINE CONSTRUCTION | Complete | Balance | % Complete |
|---|----------|---------|------------|
| Tangent (laminated) foundations excavated | 74 | 0 | 100% |
| Tangent (laminated) structures framed | 74 | 0 | 100% |
| Tangent (laminated) structures set | 74 | 0 | 100% |
| Dead-end/angle foundations excavated | 14 | 0 | 100% |
| Dead-end/angle foundations poured | 14 | 0 | 100% |
| Dead-end/angle (steel) structures framed | 14 | 0 | 100% |
| Dead-end/angle (steel) structures set | 14 | 0 | 100% |
| Spans of 1272 Bitem conductor strung | 267 | 0 | 100% |
| Spans of 1272 Bitem sagged and clipped | 267 | 0 | 100% |
| Spans of OPGW strung, attached and grounded | 89 | 0 | 100% |
| OPGW splices/terminations completed | 4 | 0 | 100% |
| Miles of distribution line leaned | 6 | 0 | 100% |
| Miles of distribution line dismantled & removed | 6 | 0 | 100% |
| Foundation excavation spoils disposed | 88 | 0 | 100% |
| Reclamation | 0 | 100% | 0% |



Ashtabula Wind, LLC