

Monday, October 13, 2008

**FPL ENERGY ASHTABULA WIND, LLC
LIVERNE, NORTH DAKOTA**

**SUBSTATION & TRANSMISSION LINE
Plan of the Day (POD)**

Weather Forecast: Cloudy
High: 49°F Low: 30°F
Winds: W @ 11 mph
Precipitation Chances: 32%

FPL Energy Otter Tail Power Company MJ Electric

Substation

- Continuing testing
- Energizing the 69kV line

Lay-down Yard

- Rock surfacing

Electrical Construction

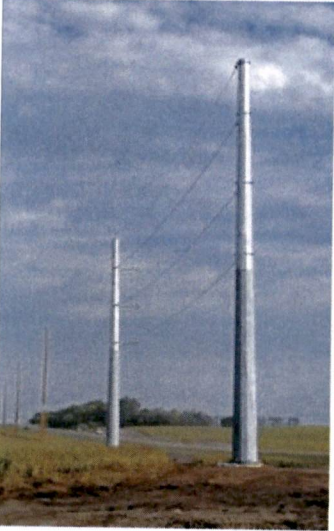
- Complete

Miscellaneous

- Waiting for final inspection

<i>RECEIVING (As of COB yesterday)</i>				
Substation Materials		Total	Rec'd	Balance
Power Transformer 241.5 kV/225 MVA		1	1	0
Power Transformer 69kV/125MVA (Lease)		1	1	0
HV Motor Disconnect Switch - 230kV 1200A		2	2	0
HV Manual Disconnect Switch 230kV 1200A		3	3	0
LV Manual Disconnect Switch 34.5kV 2000A		4	4	0
LV Manual Disconnect Switch 34.5kV 4000A		1	1	0
LV Manual Disconnect Switch 34.5kV 1200A		10	10	0
LV Hook Disconnect Switch 34.5kV 1200A		60	60	0
HV Circuit Breaker 230kV 1200A		2	2	0
LV Open Air Breaker 34.5 kV 2000A 40 kA		2	2	0
LV Open Air Breaker 34.5 kV 1200A 40 kA		10	10	0
Switchgear with Building		1	1	0
Control House		1	1	0
HV CCVTs 230kV		3	3	0
HV CCVTs 69kV		3	3	0
Metering Units		1	0	1
Metering Units CT		3	0	3
Metering Units PT		3	0	3
Support Steel and Substation Package		1 Lot	1	0
Neutral Reactor		1	1	0
SUBSTATION CONSTRUCTION			% Complete	
Galvanized Steel Structures				100%
Rigid Bus System (FT)				100%
Flexible Bus Jumper				100%
Insulators				100%
Disconnect Switches				100%
Surge Protectors				100%
Circuit Breakers				100%
CCVTs, Metering CTs and PTs				88%
Conduit - Below Grade				100%
Conduit - Above Grade				100%
Cable Trenwa System				100%
Equipment Cable Installation (# of runs)				100%
Equipment Cable Termination				98%
Conduit, Ground Bank, Fiber Enc., UG Cable, St Srv, Xfmr				100%
Crushed Rock Surfacing				80%
Grounding - Below Grade				100%
Grounding - Above Grade				90%
Station Lighting				100%
Sub Signage and Fence				60%
Foundations				100%
Testing				50%

Interconnect Transmission Line



T-LINE CONSTRUCTION	Complete	Balance	% Complete
Tangent (laminated) foundations excavated	74	0	100%
Tangent (laminated) structures framed	74	0	100%
Tangent (laminated) structures set	74	0	100%
Dead-end/angle foundations excavated	14	0	100%
Dead-end/angle foundations poured	14	0	100%
Dead-end/angle (steel) structures framed	14	0	100%
Dead-end/angle (steel) structures set	14	0	100%
Spans of 1272 Bitterm conductor strung	267	0	100%
Spans of 1272 Bitterm sagged and clipped	267	0	100%
Spans of OPGW strung, attached and grounded	89	0	100%
OPGW splices/terminations completed	4	0	100%
Miles of distribution line leaned	6	0	100%
Miles of distribution line dismantled & removed	6	0	100%
Foundation excavation spoils disposed	88	0	100%
Reclamation	0	100%	0%

Plan of the Day contents shall not be forwarded or distributed without prior written consent of FPLE

223 PU-08-32 Filed: 10/13/2008 Pages: 1
Ashtabula Wind, Substation, Plan of the Day, Oct. 13, 2008

Ashtabula Wind, LLC