

FPL ENERGY ASHTABULA WIND, LLC
LUVERNE, NORTH DAKOTA

OTTER TAIL Plan of the Day (POD)

Weather Forecast: **Partly Sunny**
 High: **57°F** Low: **36°F**
 Winds: **ESE @ 5 mph**
 Precipitation Chances: **0%**

Friday, October 17, 2008

COD - 12/15/08

60 Days to COD

| | | | |
|-------------------|-------------------|-----------------|-------------|
| FPL Energy | Otter Tail | Blattner | GEWE |
|-------------------|-------------------|-----------------|-------------|

Environmental:

- SWPPP inspection October 30th
- Developing wetland impact prevention plan and maps
- Monitor environmentally sensitive areas
- Marking environmentally sensitive areas
- Environmental awareness to ALL crews

Safety:

- Check Back-up alarms daily and report.
- Observe speed limits.
- Wear all required PPE.
- Maintain hydration.
- Watch soft spots when off-loading trucks.
- Hunters are out, Stay visible

Erection:

- Electrical cabling termination complete
- Mechanical completion pre-walk at OT37 & OT38
- IIP at OT39, AT40 & OT41

Substation:

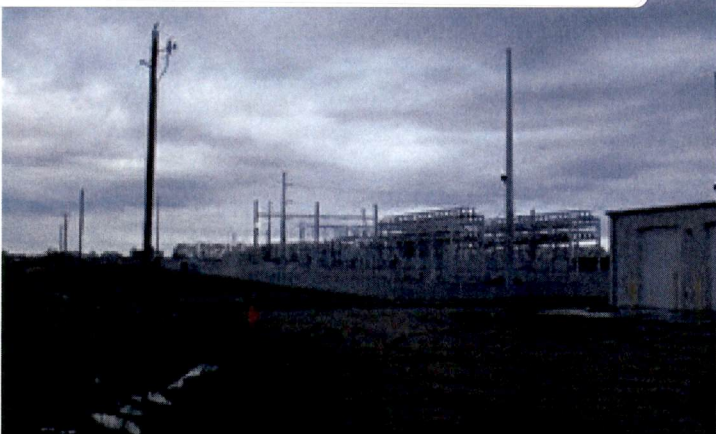
- Energization deferred to Sunday Oct. 19th due to equipment difficulties

| Receiving (As of COB yesterday) | | | |
|---------------------------------|---------|---------|---------|
| | Total | Rec'd | Balance |
| PMT XFR | 32 | 33 | -1 |
| Grounding XFR | 2 | 2 | 0 |
| 4/0 Cable | 147,000 | 150,560 | -3,560 |
| 1000KM | 91,446 | 94,500 | -3,054 |
| 500KM | 45,000 | 46,468 | -1,468 |
| 12 Fiber SM | 91,000 | 95,535 | -4,535 |
| 1001 KCM (LVC) | 12,500 | 12,500 | 0 |
| Grounding XFR boxp | 2 | 2 | 0 |
| XFR Box Pads | 32 | 32 | 0 |
| Bases | 32 | 32 | 0 |
| Mids | 32 | 32 | 0 |
| Tops | 32 | 32 | 0 |
| Machine Heads | 32 | 32 | 0 |
| Contollers (DTA's) | 32 | 32 | 0 |
| Blade Sets | 32 | 32 | 0 |
| Hubs | 32 | 32 | 0 |

General Construction Status

231 PU-08-32 Filed: 10/17/2008 Pages: 1
 Ashtabula Wind, Otter Tail, Plan of the Day, Oct. 17, 2008

Ashtabula Wind, LLC



| | Total | Complete | % Complete |
|-----------------------------|---------|----------|------------|
| Roads Subgraded | 37,970 | 41,566 | 109.5% |
| Roads Complete | 37,970 | 41,566 | 109.5% |
| Foundations Excavated | 32 | 32 | 100.0% |
| Foundations Poured | 32 | 32 | 100.0% |
| Foundations Backfilled | 32 | 32 | 100.0% |
| Crane Pads Complete | 32 | 32 | 100.0% |
| Tower Base Sections Erected | 32 | 32 | 100.0% |
| Tower Mid Sections Erected | 32 | 32 | 100.0% |
| Tower Top Sections Erected | 32 | 32 | 100.0% |
| Machine Heads Installed | 32 | 32 | 100.0% |
| Rotors Flown | 32 | 32 | 100.0% |
| Mechanically Completed | 32 | 20 | 62.5% |
| Pre-Commissioned | 32 | 16 | 50.0% |
| Final Commissioned | 32 | 0 | 0.0% |
| Cable Installed 4/0 | 127,188 | 124,602 | 98.0% |
| Cable Installed 1000 KM | 58,311 | 77,964 | 133.7% |
| Cable Installed 500 KM | 44,316 | 38,802 | 87.6% |
| Fiber-Optic 12 Fiber SM | 91,000 | 87,146 | 95.8% |
| Transformers Set | 32 | 32 | 100.0% |
| Transformers Terminated | 32 | 32 | 100.0% |
| (as of COB yesterday) | | | |