

Pointer 47°17'51.16" N 97°55'23.02" W

Streaming 100%

Eye alt 30997 ft

REV.	DATE	DRAWN	DESCRIPTION	WORK ORDER	CHKD	APPD	DATE
A	07/18/08	MAK	PRELIMINARY ISSUE				

CIEIG CONSULTING ENGINEERS GROUP
FARMINGTON, MINNESOTA

I HEREBY CERTIFY THAT THE PLAN, SPECIFICATION, OR REPORT WAS PREPARED BY ME OR UNDER MY DIRECT SUPERVISION AND THAT I AM A duly LICENSED PROFESSIONAL ENGINEER UNDER THE LAWS OF THE STATE OF NORTH DAKOTA

NAME: **JAMES C. HANSON**

DATE: _____ REGISTER NO. **5413**

SIGNATURE: _____

**MPOWER / LUVERNE
COLLECTION SYSTEM
SOUTH OVERALL LAYOUT**

DRAWN: **MAK** SCALE: **NONE**

DATE: **07/18/08** DWG. NO. **NW-PP-02RA**

TO DWG NW-PP-10

TO DWG NW-PP-13

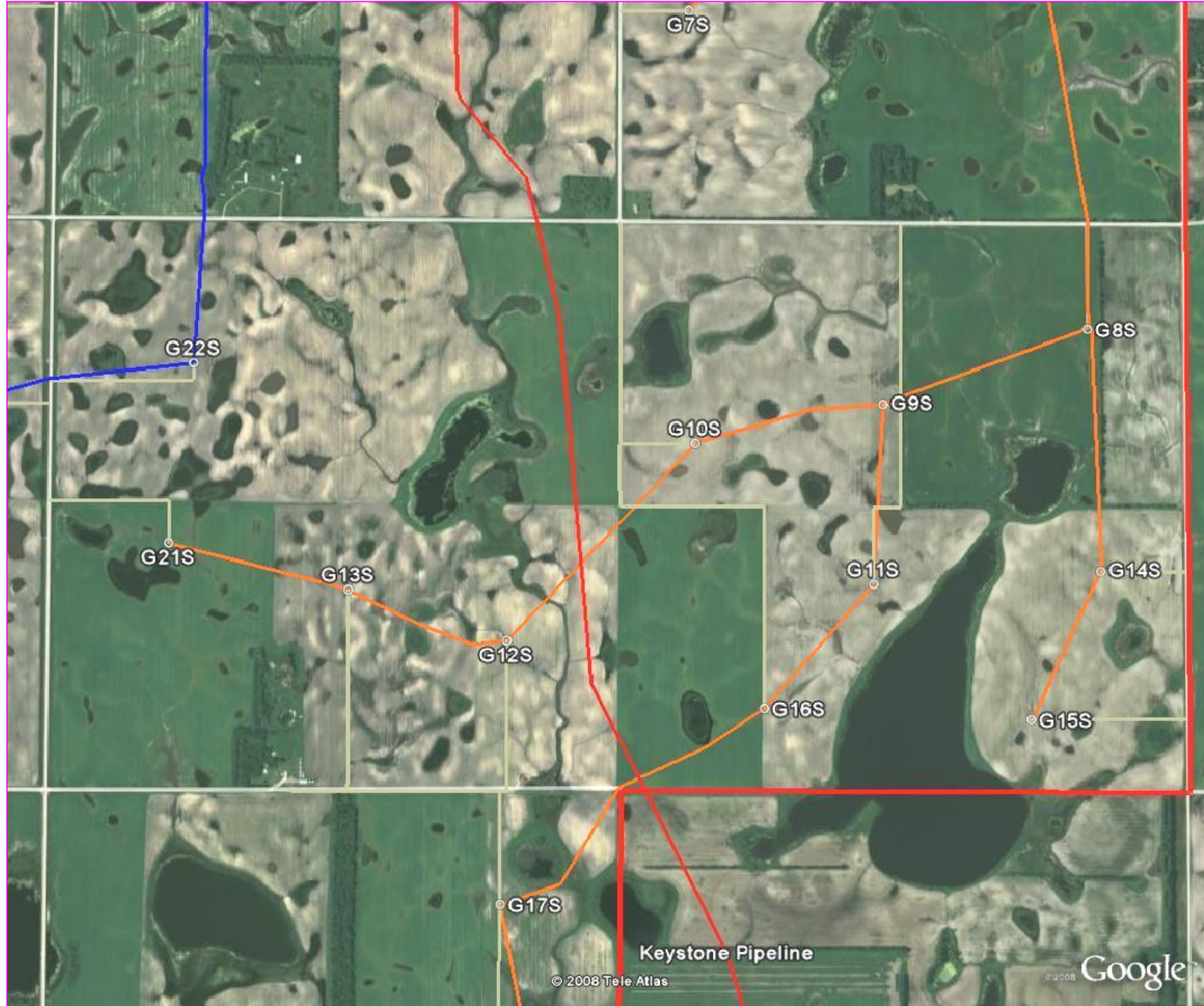


REV.	DATE	DRAWN	DESCRIPTION	WORK ORDER	CHKD	APPD	DATE
A	07/18/08	MAK	PRELIMINARY ISSUE				

CIEIG		CONSULTING ENGINEERS GROUP FARMINGTON, MINNESOTA	
I HEREBY CERTIFY THAT THE PLAN, SPECIFICATION, OR REPORT WAS PREPARED BY ME OR UNDER MY DIRECT SUPERVISION AND THAT I AM A REGISTERED PROFESSIONAL ENGINEER UNDER THE LAWS OF THE STATE OF NORTH DAKOTA		MPOWER / LUVERNE COLLECTION SYSTEM SOUTH SECTION 20	
NAME	JAMES C. HANSON	DRAWN	MAK
DATE	REGISTER NO. 5413	SCALE	NONE
SIGNATURE		DATE	07/18/08
		DWG. NO.	NW-PP-09RA

TO DWG NW-PP-11

TO DWG NW-PP-15



TO DWG NW-PP-09

REV.	DATE	DRAWN	DESCRIPTION	WORK ORDER	CHKD	APPD	DATE
A	07/18/08	MAK	PRELIMINARY ISSUE				

CEIG CONSULTING ENGINEERS GROUP
FARMINGTON, MINNESOTA

I HEREBY CERTIFY THAT THE PLAN, SPECIFICATION, OR REPORT WAS PREPARED BY ME OR UNDER MY DIRECT SUPERVISION AND THAT I AM A duly LICENSED PROFESSIONAL ENGINEER UNDER THE LAWS OF THE STATE OF NORTH DAKOTA

NAME: JAMES C. HANSON

DATE: 07/18/08 REGISTER NO. 5413

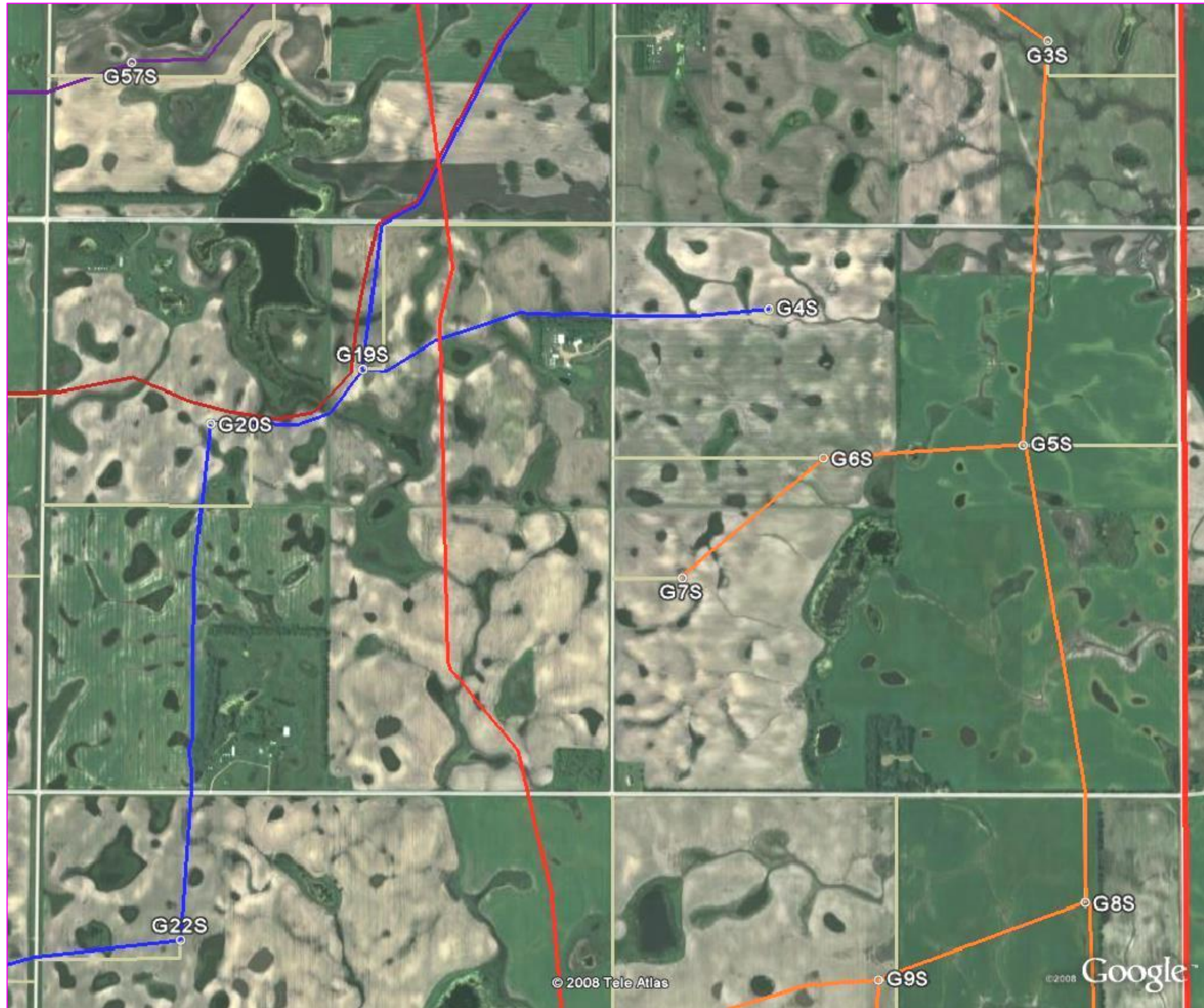
SCALE: NONE

DRAWN: MAK DATE: 07/18/08

DWG. NO. NW-PP-10RA

TO DWG NW-PP-12

TO DWG NW-PP-16



TO DWG NW-PP-10

REV.	DATE	DRAWN	DESCRIPTION	WORK ORDER	CHKD	APPD	DATE
A	07/18/08	MAK	PRELIMINARY ISSUE				
CIEIG CONSULTING ENGINEERS GROUP FARMINGTON, MINNESOTA							
I HEREBY CERTIFY THAT THE PLAN, SPECIFICATION, OR REPORT WAS PREPARED BY ME OR UNDER MY DIRECT SUPERVISION AND THAT I AM A REGISTERED PROFESSIONAL ENGINEER UNDER THE LAWS OF THE STATE OF NORTH DAKOTA				MPOWER / LUVERNE COLLECTION SYSTEM SOUTH SECTIONS 8 & 9			
NAME	JAMES C. HANSON			DRAWN	MAK	SCALE	NONE
DATE	07/18/08			DATE	07/18/08	DWG. NO.	NW-PP-11RA
SIGNATURE							

TO DWG NW-PP-06



TO DWG NW-PP-17

TO DWG NW-PP-18

TO DWG NW-PP-11

REV.	DATE	DRAWN	DESCRIPTION	WORK ORDER	CHKD	APPD	DATE
A	07/18/08	MAK	PRELIMINARY ISSUE				

CIEIG CONSULTING ENGINEERS GROUP
FARMINGTON, MINNESOTA

I HEREBY CERTIFY THAT THIS PLAN, SPECIFICATION, OR REPORT WAS PREPARED BY ME OR UNDER MY DIRECT SUPERVISION AND THAT I AM A REGISTERED PROFESSIONAL ENGINEER UNDER THE LAWS OF THE STATE OF NORTH DAKOTA

NAME: **JAMES C. HANSON**

DATE: _____ REGISTER NO. **5413**

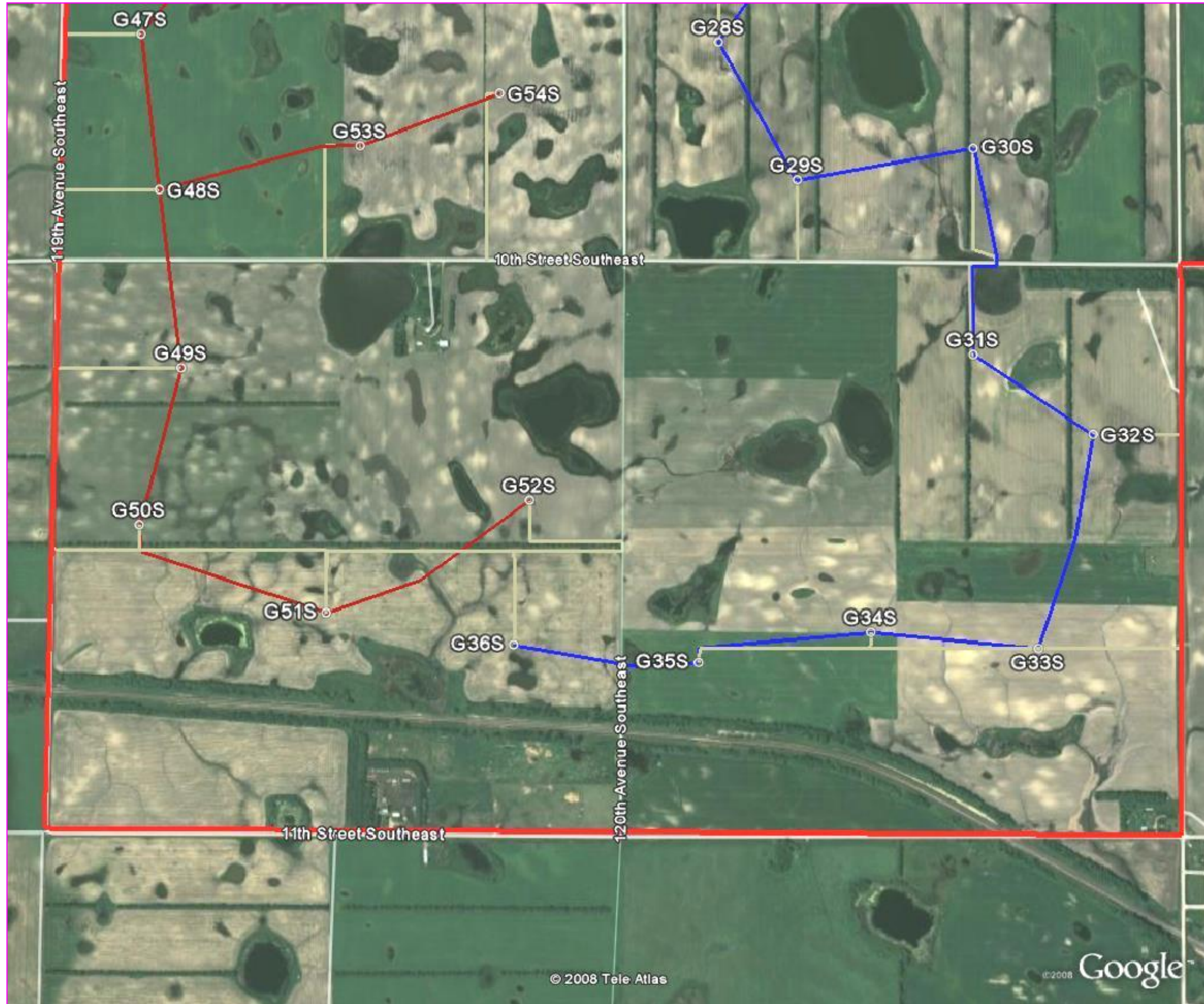
SIGNATURE: _____

**MPOWER / LUVERNE
COLLECTION SYSTEM
SOUTH SECTIONS 4 & 5**

DRAWN: **MAK** SCALE: **NONE**

DATE: **07/18/08** DWG. NO. **NW-PP-12RA**

TO DWG NW-PP-14



TO DWG NW-PP-09

REV.	DATE	DRAWN	DESCRIPTION	WORK ORDER	CHKD	APPD	DATE
A	07/18/08	MAK	PRELIMINARY ISSUE				

CEIG CONSULTING ENGINEERS GROUP
FARMINGTON, MINNESOTA

I HEREBY CERTIFY THAT THE PLAN, SPECIFICATION, OR REPORT WAS PREPARED BY ME OR UNDER MY DIRECT SUPERVISION AND THAT I AM A REGISTERED PROFESSIONAL ENGINEER UNDER THE LAWS OF THE STATE OF NORTH DAKOTA

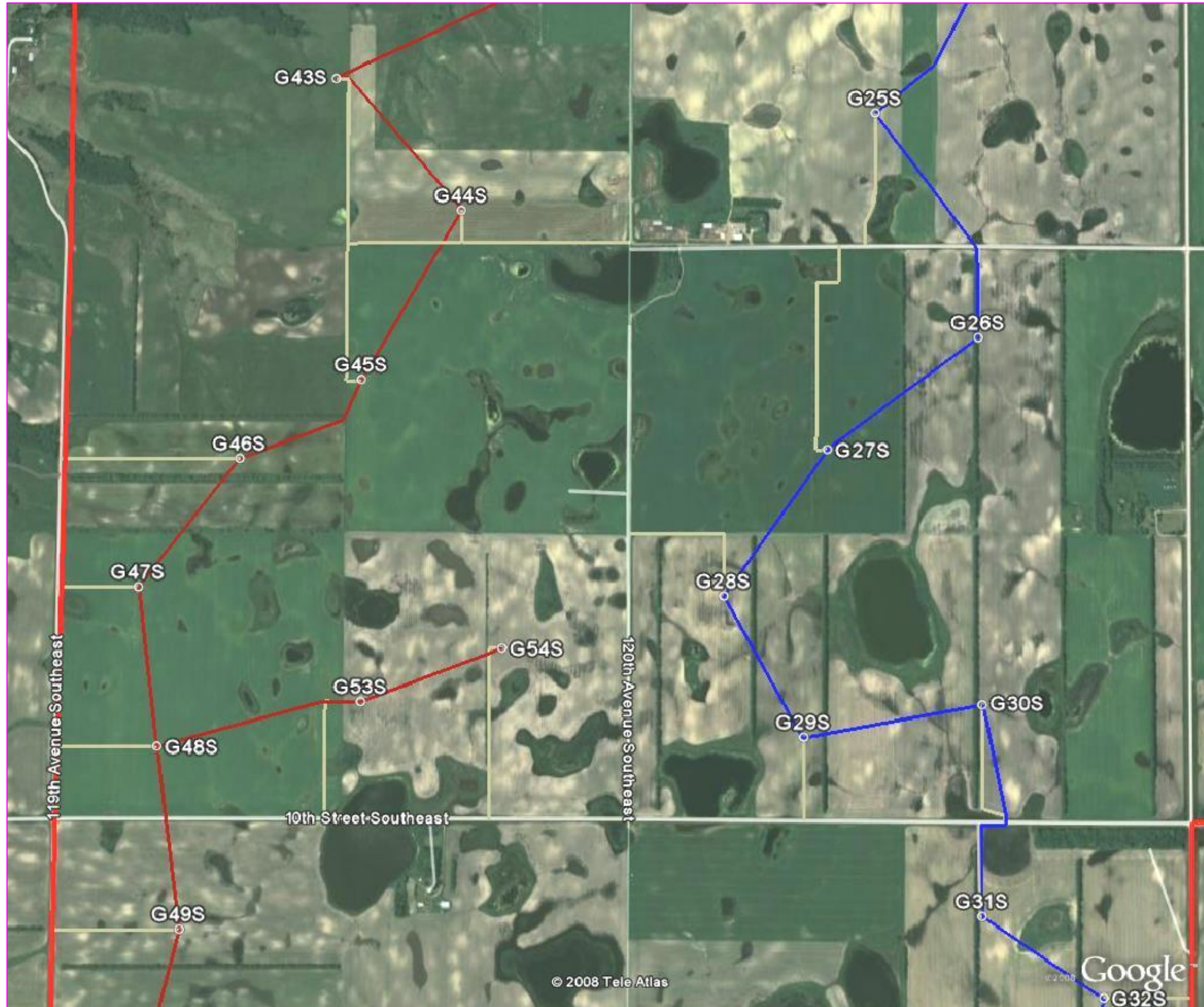
NAME: JAMES C. HANSON
DATE: 07/18/08
REGISTER NO.: 5413

**MPOWER / LUVERNE
COLLECTION SYSTEM
SOUTH SECTIONS 25 & 30**

DRAWN: MAK
DATE: 07/18/08

SCALE: NONE
DWG. NO.: NW-PP-13RA

TO DWG NW-PP-15



TO DWG NW-PP-10

TO DWG NW-PP-13

REV.	DATE	DRAWN	DESCRIPTION	WORK ORDER	CHKD	APPD	DATE
A	07/18/08	MAK	PRELIMINARY ISSUE				

CEIG CONSULTING ENGINEERS GROUP
FARMINGTON, MINNESOTA

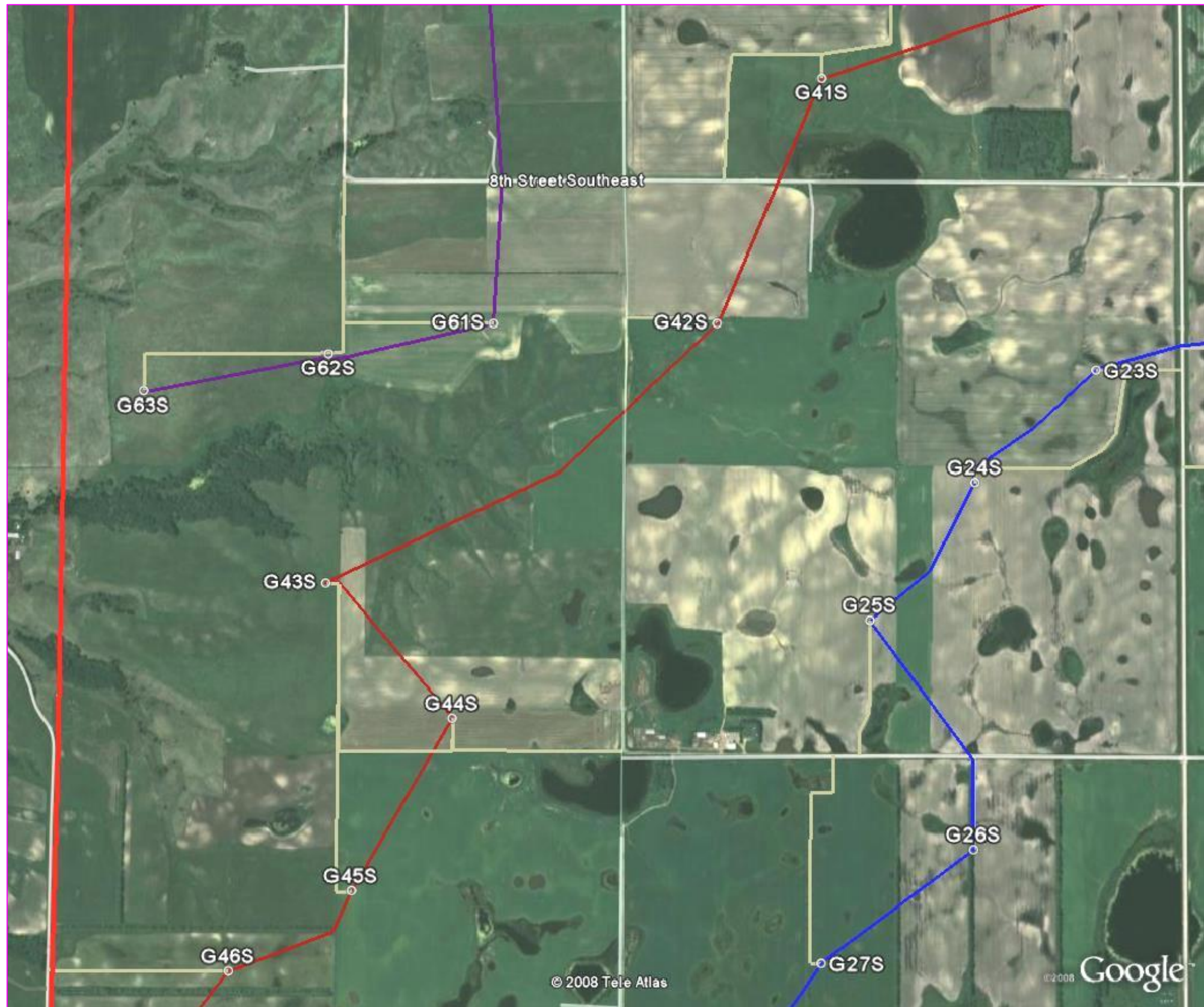
I HEREBY CERTIFY THAT THE PLAN, SPECIFICATION, OR REPORT WAS PREPARED BY ME OR UNDER MY DIRECT SUPERVISION AND THAT I AM A duly LICENSED PROFESSIONAL ENGINEER UNDER THE LAWS OF THE STATE OF NORTH DAKOTA

NAME: JAMES C. HANSON
DATE: 07/18/08
REGISTER NO.: 5413

**MPOWER / LUVERNE
COLLECTION SYSTEM
SOUTH SECTIONS 19 & 24**

DRAWN: MAK
DATE: 07/18/08
SCALE: NONE
DWG. NO.: NW-PP-14RA

TO DWG NW-PP-16



TO DWG NW-PP-10

TO DWG NW-PP-14

REV.	DATE	DRAWN	DESCRIPTION	WORK ORDER	CHKD	APPD	DATE
A	07/18/08	MAK	PRELIMINARY ISSUE				

CEIG CONSULTING ENGINEERS GROUP
FARMINGTON, MINNESOTA

I HEREBY CERTIFY THAT THE PLAN, SPECIFICATION, OR REPORT WAS PREPARED BY ME OR UNDER MY DIRECT SUPERVISION AND THAT I AM A duly LICENSED PROFESSIONAL ENGINEER UNDER THE LAWS OF THE STATE OF NORTH DAKOTA

NAME: **JAMES C. HANSON**

DATE: _____ REGISTER NO. **5413**

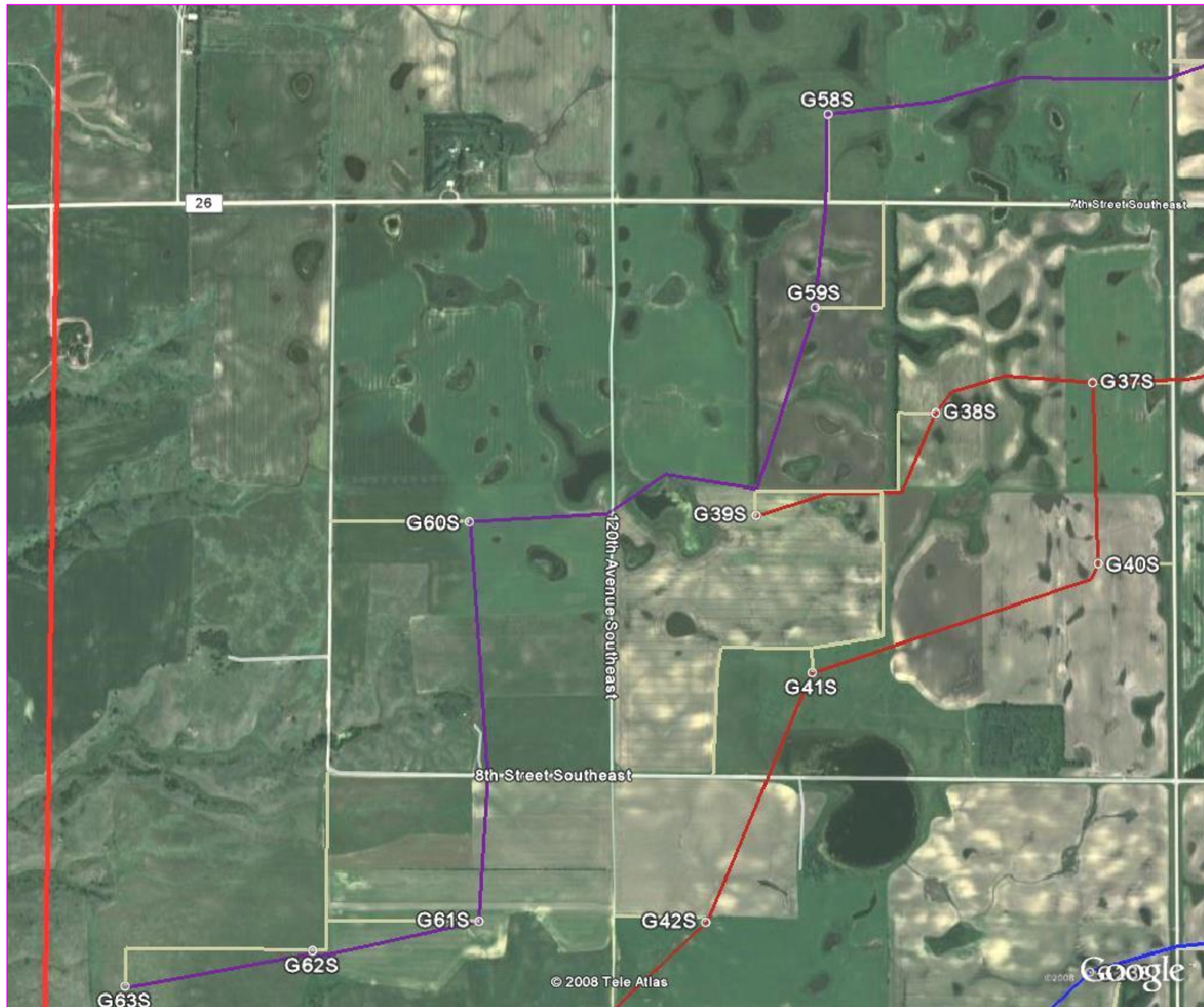
SIGNATURE: _____

**MPOWER / LUVERNE
COLLECTION SYSTEM
SOUTH SECTIONS 13 & 18**

DRAWN: **MAK** SCALE: **NONE**

DATE: **07/18/08** DWG. NO. **NW-PP-15RA**

TO DWG NW-PP-17



TO DWG NW-PP-11

TO DWG NW-PP-15

REV.	DATE	DRAWN	DESCRIPTION	WORK ORDER	CHKD	APPD	DATE
A	07/18/08	MAK	PRELIMINARY ISSUE				

CEIG CONSULTING ENGINEERS GROUP
FARMINGTON, MINNESOTA

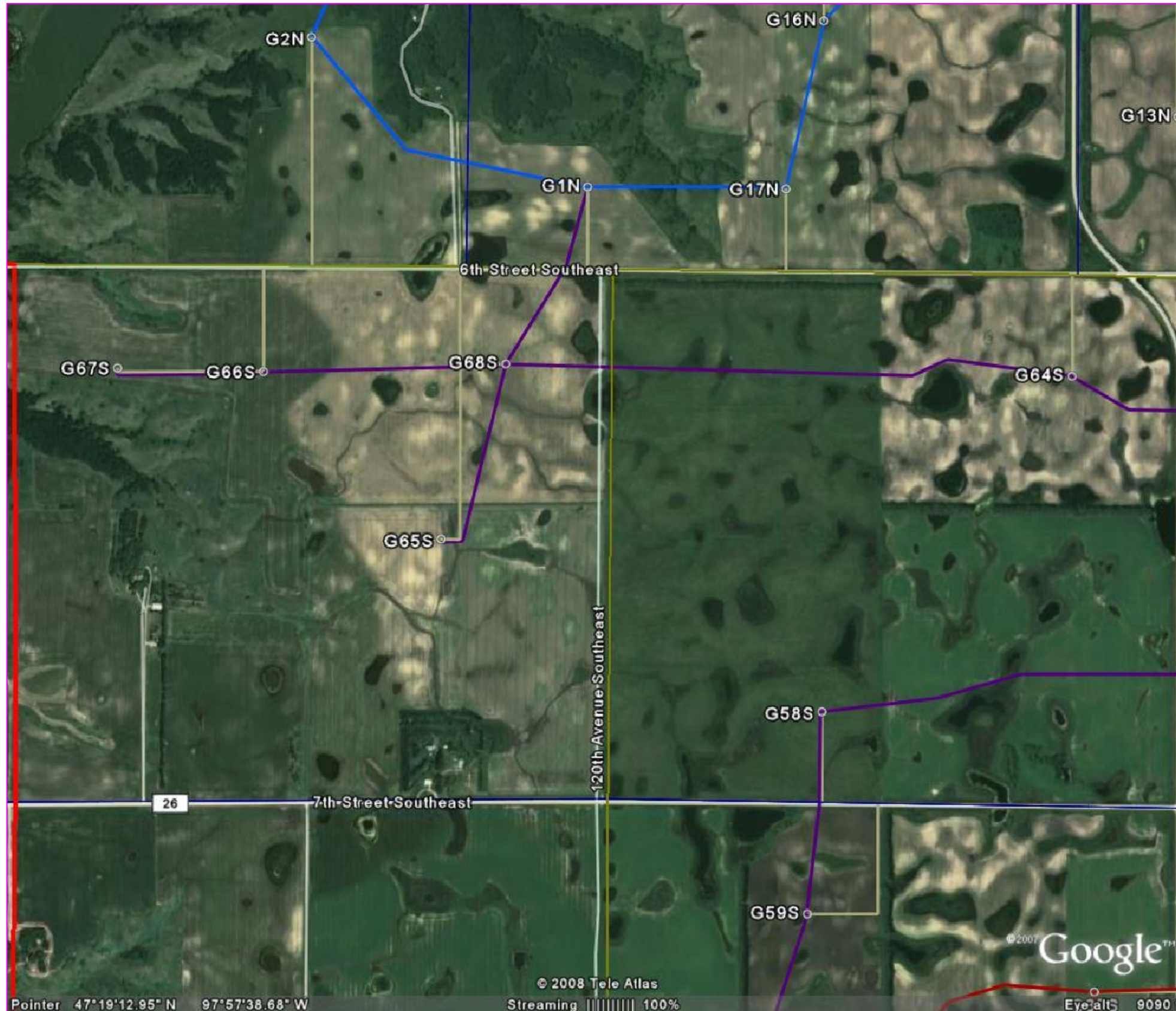
I HEREBY CERTIFY THAT THE PLAN, SPECIFICATION, OR REPORT WAS PREPARED BY ME OR UNDER MY DIRECT SUPERVISION AND THAT I AM A REGISTERED PROFESSIONAL ENGINEER UNDER THE LAWS OF THE STATE OF NORTH DAKOTA

NAME: JAMES C. HANSON
DATE: 07/18/08
REGISTER NO.: 5413

**MPOWER / LUVERNE
COLLECTION SYSTEM
SOUTH SECTIONS 7 & 12**

DRAWN: MAK
DATE: 07/18/08
SCALE: NONE
DWG. NO.: NW-PP-16RA

TO DWG NW-PP-07



TO DWG NW-PP-12

TO DWG NW-PP-16

REV.	DATE	DRAWN	DESCRIPTION	WORK ORDER	CHKD	APPD	DATE
A	07/18/08	MAK	PRELIMINARY ISSUE				

CEIG CONSULTING ENGINEERS GROUP
FARMINGTON, MINNESOTA

I HEREBY CERTIFY THAT THE PLAN, SPECIFICATION, OR REPORT WAS PREPARED BY ME OR UNDER MY DIRECT SUPERVISION AND THAT I AM A duly LICENSED PROFESSIONAL ENGINEER UNDER THE LAWS OF THE STATE OF NORTH DAKOTA

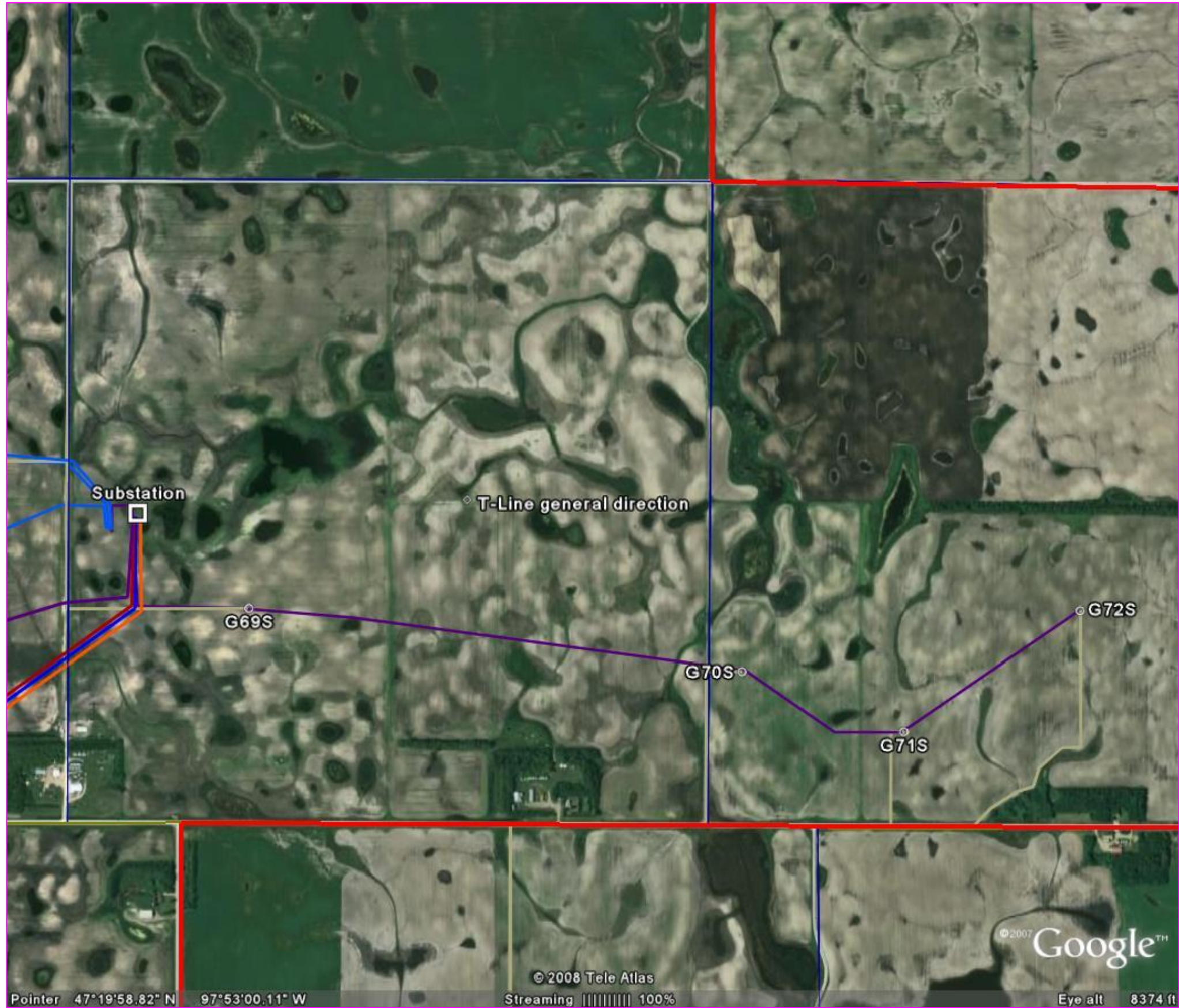
NAME: JAMES C. HANSON
DATE: _____ REGISTER NO.: 5413
SIGNATURE: _____

**MPOWER / LUVERNE
COLLECTION SYSTEM
SOUTH SECTIONS 1 & 6**

DRAWN: MAK
DATE: 07/18/08

SCALE: NONE
DWG. NO.: NW-PP-17RA

TO DWG NW-PP-12



REV.	DATE	DRAWN	DESCRIPTION	WORK ORDER	CHKD	APPD	DATE
A	07/18/08	MAK	PRELIMINARY ISSUE				

CIEIG CONSULTING ENGINEERS GROUP
FARMINGTON, MINNESOTA

I HEREBY CERTIFY THAT THE PLAN, SPECIFICATION, OR REPORT WAS PREPARED BY ME OR UNDER MY DIRECT SUPERVISION AND THAT I AM A duly LICENSED PROFESSIONAL ENGINEER UNDER THE LAWS OF THE STATE OF NORTH DAKOTA

NAME: JAMES C. HANSON
DATE: 07/18/08
REGISTER NO.: 5413

MPOWER / LUVERNE
COLLECTION SYSTEM
SOUTH SECTIONS 35 & 36

DRAWN: MAK
DATE: 07/18/08

SCALE: NONE
DWG. NO.: NW-PP-18RA