

October 8, 2008

HAND DELIVERED

Mr. Darrell Nitschke
Executive Secretary
North Dakota Public Service Commission
600 E. Boulevard, Dept. 408
Bismarck, ND 58505-0480

RECEIVED
OCT 08 2008
PUBLIC SERVICE COMMISSION

RE: M-POWER, LLC
CASE NO. PU-03-34 08-34
Exhibits 6-11

Dear Mr. Nitschke:

Please find enclosed herewith for filing an original and ten copies of the following late filed exhibits:

- 1 Exhibit 6 - Plat showing location of homes in relationship to turbine locations;
- 2 Exhibit 7 - Plat showing businesses, if any, within "footprint" of wind farm;
- 3 Exhibit 8 - What will noise level of turbines be (in decibels) within 1,400 feet of turbines;
- 4 Exhibit 9 - Plat showing location of "North County Scenic Trail" with "footprint" of wind farm;
- 5 Exhibit 10 - Plat showing "staging and construction area"; and
- 6 Exhibit 11 - Plat showing location of Keystone Pipeline within "footprint" of wind farm and location of turbines.

Also enclosed is a disk containing the same.

Should you have any questions, please advise.

Sincerely,


LAWRENCE BENDER

LB/leo

Enclosure

cc: Mr. Warren Enyart – (w/o enc.)
Mr. Lloyd Anderson – (w/o enc.)
Ms. Jennifer Smestad – (w/o enc.)

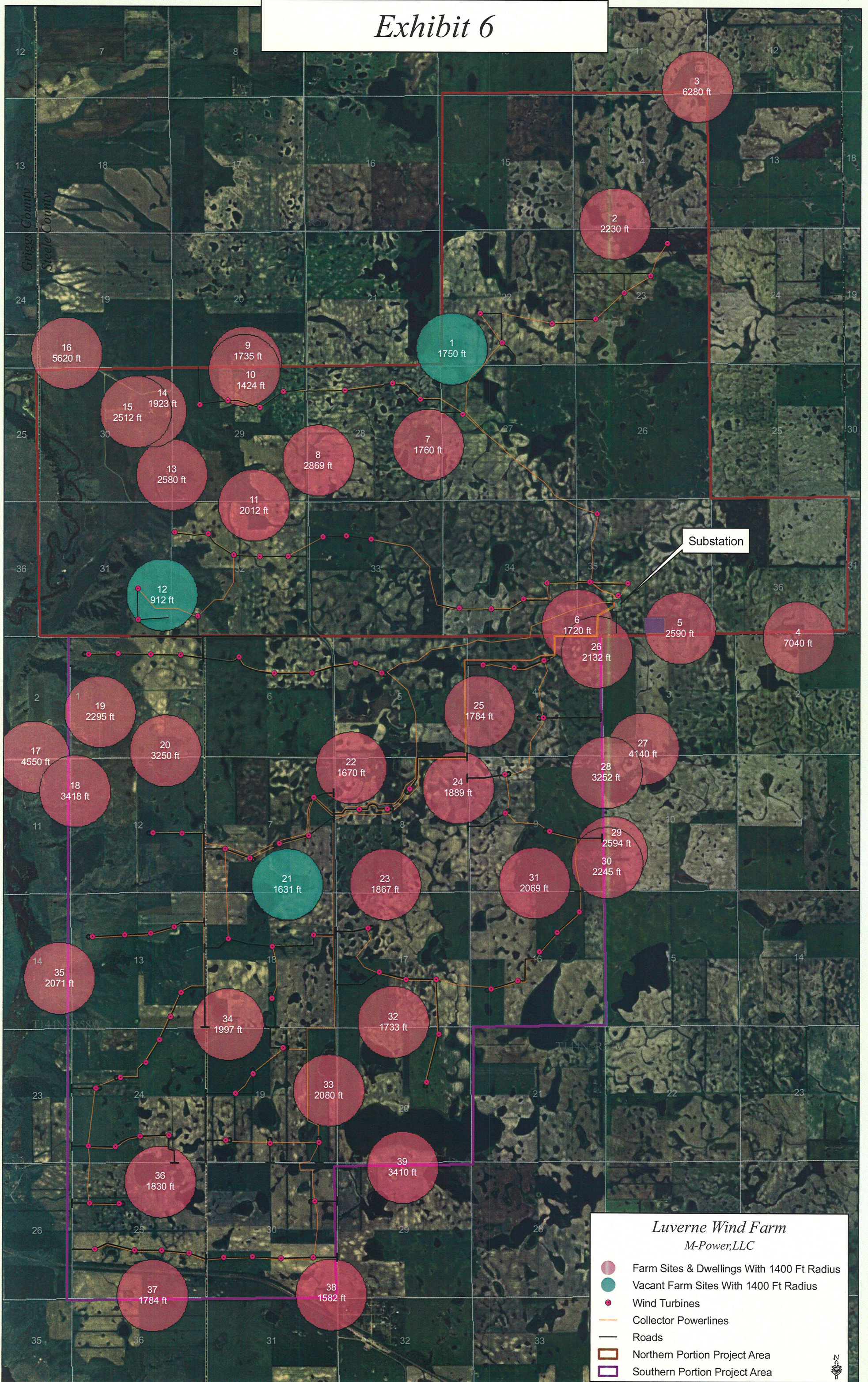
4443167_1.DOC

Attorneys & Advisors
main 701.227.1000
fax 701.227.1000
www.fredla

Fredrikson & Byron, P.A.
300 North First Street, Suite 1500
Bismarck, ND 58502

36 **PU-08-34** Filed: 10/8/2008 Pages: 10
Late-Filed Exhibits 6 - 11 + CD

Exhibit 6



Substation

Luverne Wind Farm M-Power, LLC

- Farm Sites & Dwellings With 1400 Ft Radius
- Vacant Farm Sites With 1400 Ft Radius
- Wind Turbines
- Collector Powerlines
- Roads
- Northern Portion Project Area
- Southern Portion Project Area



MEMO

Date: October 7, 2008
To: Public Service Commission
Copy To:
From: M-Power, LLC
Re: Luverne Wind Farm PSC Application
(Exhibit 7, Businesses in the Study Area)

A thorough review of the study area has revealed that three businesses currently operate within the existing study area.

Prairie Bilt Sleds—(Proprietor: Jim & Mary Ann Miller) T144N, R58W, W ½ of NW ¼ Section 12

Volden Farms Bed & Breakfast—(Proprietor: Joanne Wold) T144N, R58W, W ½ Section 1

Johnson Trenching—(Proprietor: Vernon Johnson) T145N, R57W, SW ¼ Section 35

Please see the attached map, labeled Exhibit 7, showing locations of businesses operating within the wind farm study area.

701 355 8400

128 Soo Line Drive

PO Box 1157

Bismarck, ND 58502-1157

Fax 701 355 8781

www.kljeng.com

Kadrmas, Lee & Jackson, Inc.

A **KLJ Solutions Company**

MEMO

EXHIBIT 8

Date: October 7, 2008
To: Public Service Commission
Copy To:
From: M-Power, LLC
Re: Luverne Wind Farm PSC Application
(Exhibit 8, Noise Levels Within 1,400 Feet of
Turbines)

The GE 1.5 MW wind turbine noise emission characteristics were carried out in accordance with the regulation of International Standards IEC61400-11:2002.

The sound power levels (L_{wa}) were calculated at hub height (80 m) and at the maximum wind speed (9 m/s to cut out). The sound pressure levels were no greater than 104.0 dB (decibels).

It is important to distinguish between sound power levels and sound pressure levels. Sound power level is the power of the sound pressure wave. Sound power level is a property of the source of the sound, while sound pressure is a property of sound at a given location. This can be illustrated by thinking of a baseball batter. When the batter swings the bat, this would be considered the sound power level. When the batter makes contact with the ball, it becomes the sound pressure level.

Because of the wide range of sound pressures to which the human ear can respond to over a given time, sound pressure is measured in a dB(A) scale. The dB(A) scale measures sound intensity over a wide range of audible frequencies (e.g., the threshold of hearing is 0 dB(A), a rock concert is 120 dB(A)). The dB(A) scale is used throughout the environmental document to measure "noise impact".

Sound levels originating from a wind turbine do not transmit in a linear pattern but rather transmit spherically around the turbine. With each doubling of distance from the turbine, the sound level decreases 6 dB. In other words, at 200 m the sound level will be one-fourth of the sound level at 100 m. Therefore, with the initial sound level source of these GE Turbines at no greater than 104.0 dB within a distance of 150 m, the level will have decreased to ± 50 dB(A). At a distance of 425 m, the level will have decreased to ± 40 dB(A). This is consistent with noise levels in a rural setting.

701 355 8400

128 Soo Line Drive

PO Box 1157

Bismarck, ND 58502-1157

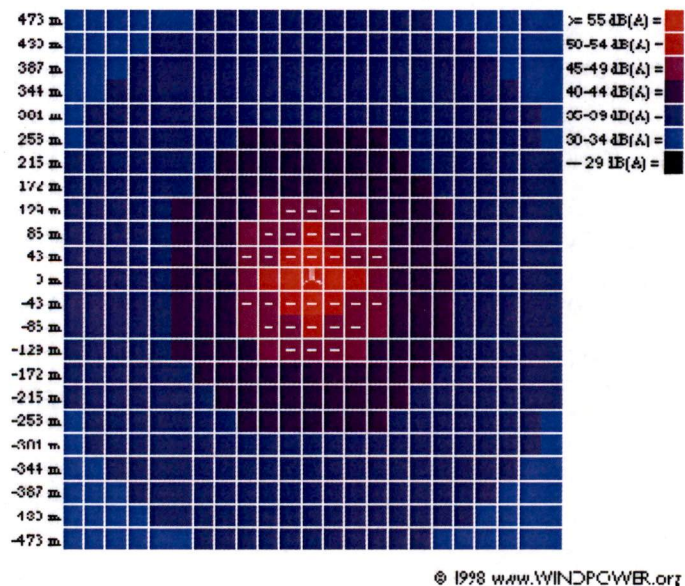
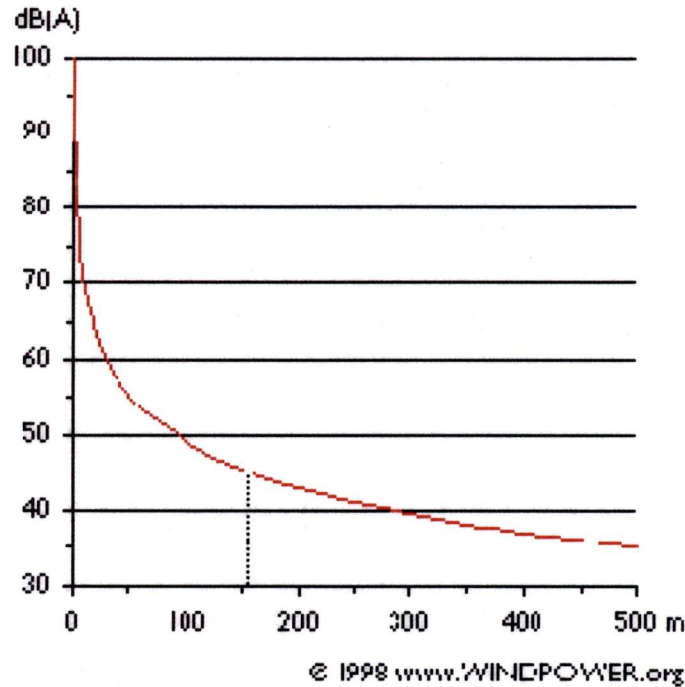
Fax 701 355 8781

www.kljeng.com

Kadrmass, Lee & Jackson, Inc.

A *KLJ Solutions Company*

In addition, the ability to hear a wind turbine depends on the ambient sound level. Ambient sound levels in rural areas are generated when the wind increases in speed and interacts with trees, crops, and other vegetation. At this point the low frequency noise of the wind turbine is lost in the background. When the wind is low the turbines turn slowly, or not at all, and insignificant noise levels are produced. The following charts illustrate sound level distances and distribution.



Sources:

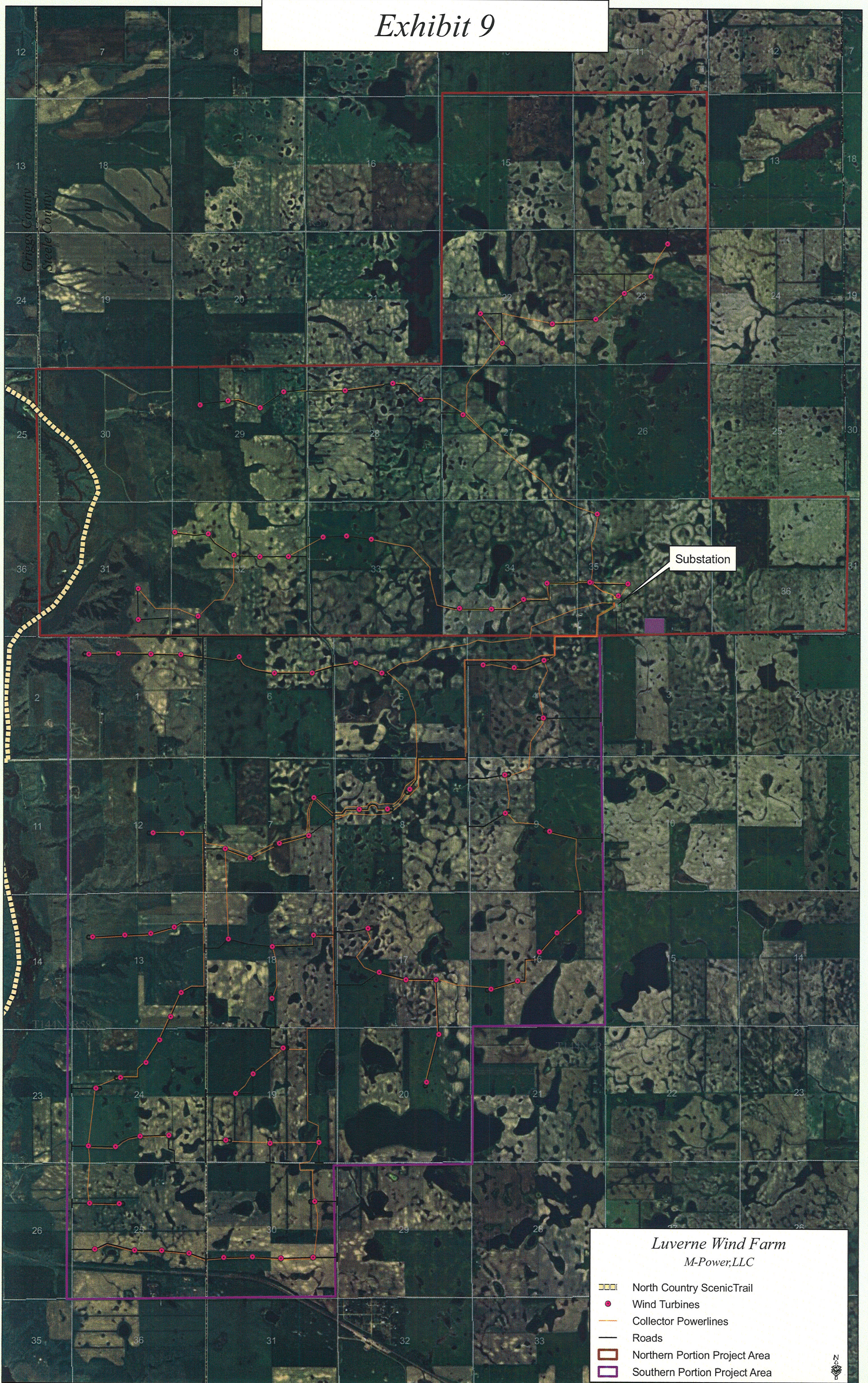
Danish Wind Industry Association. April 2008. <<http://www.windpower.org/en/tour/env/sound.htm>>.

GE Energy. Technical Documentation Wind Turbine Generator System GE 1.5sl/sle 50 & 60 Hz: Noise Emission Characteristics. GE Energy: 2005.

Manwell, James, Anthony Rogers, and Sally Wright. Wind Turbine Acoustic Noise. Renewable Energy Research Laboratory. University of Massachusetts at Amherst: 2002.

The Scottish Office, Environmental Department, Planning Advice Note, PAN 45, Annex A: Wind Power, A.27 Renewable Energy Technologies, August 1994.

Exhibit 9



Substation

Luverne Wind Farm
M-Power, LLC

- North Country Scenic Trail
- Wind Turbines
- Collector Powerlines
- Roads
- Northern Portion Project Area
- Southern Portion Project Area




Exhibit 10

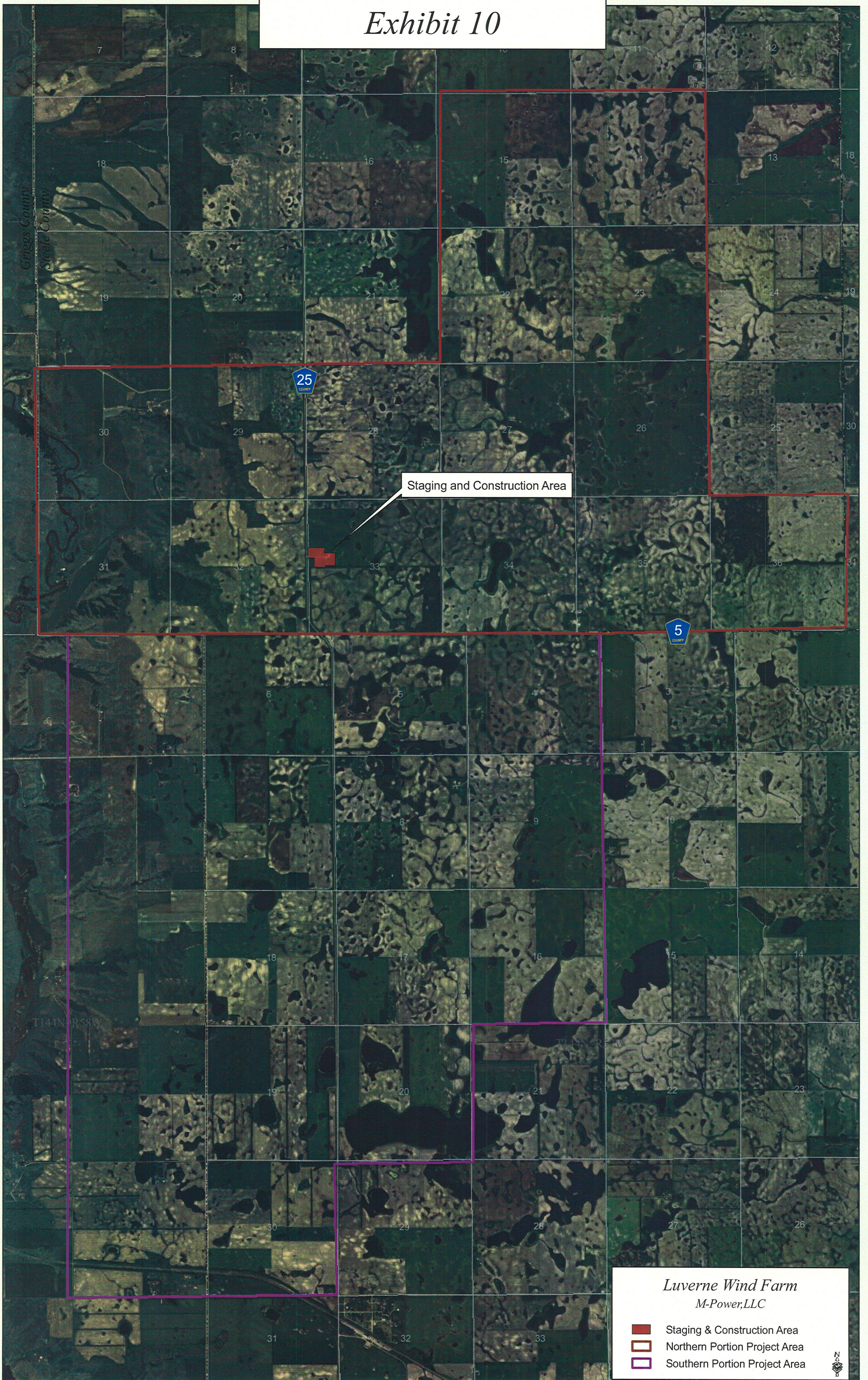


Exhibit 11

Griggs County
Steele County

T145N~R57W

Substation

T144N~R58W

T144N~R57W

Luverne Wind Farm M-Power, LLC

- Keystone Pipeline
- Wind Turbines
- Collector Powerlines
- Roads
- Northern Portion Project Area
- Southern Portion Project Area

