

**Jerome C. Kettleson**

---

**From:** Phillips, Duane [PhillipsDuane@stanleygroup.com]  
**Sent:** Wednesday, July 02, 2008 10:19 AM  
**To:** ndpsc@nd.gov  
**Cc:** akoeckeritz@otpc.com; Jerome C. Kettleson; jolson@minnkota.com; rsjohnson@otpc.com  
**Subject:** Updated Minnkota Power Cooperative Change Summary Pillsbury-Fargo  
**Attachments:** psc poles(1).pdf

Good Morning,

As the design engineering firm and on behalf of Minnkota Power Cooperative, I am respectfully submitting the attached Change Summary drawings associated with the Pillsbury-Fargo 230kV Wind Generation Tie transmission line. This represents proposed changes to the transmission line alignment from what was submitted at the PSC Hearing dated May 22nd, 2008.

Once construction activities commenced, and particularly once construction staking was accomplished, there were several changes to the proposed line that were requested based on updated information. In the attached drawings, the red locations indicate what was previously submitted, and the black locations indicate what is being proposed - or what the changes are. We have also added several dimensions to indicate distances of the changes for each section that has changed.

Summary & Explanation of Changes

Sheet 1 & 2          Structures 31 - 40          This entire line of structures was moved 20' east in order to better accommodate land owner concerns regarding farming activities

Sheet 3              Structures 238 - 241          This entire line section was moved 118' west in order to better accommodate land owner concerns regarding farming activities

Sheet 4 - 5          Structures 523 - 552          This section reflects a span distance change from 580' ruling span, reduced to 425' ruling span - this not only moved poles along the submitted centerline, but also added 9 additional structures to this section (2 additional were added due to the Rush River re-route to be discussed at the PSC Supplemental Hearing scheduled for July 8th,

2008), thus bringing the total for the transmission line to 552.

Span length changes were made based upon material considerations associated with the double circuit 230/69 portion being utilized in that portion of Reed Township. The

centerline remained the same as was previously submitted.

Those are the proposed changes to the line based on updated information that we have since staking and construction activities have commenced. We respectfully submit these changes to the North Dakota PSC for their review and concurrence as we move forward with construction activities.

Please contact me with any questions or comments that you have regarding these drawings or any subsequent notification of potential changes. Thanks you for your consideration!

7/2/2008

Sincerely,

Stanley Consultants, Inc

Duane Phillips  
Project Manager

(W) 303.649.7831  
(C) 303.588.7828

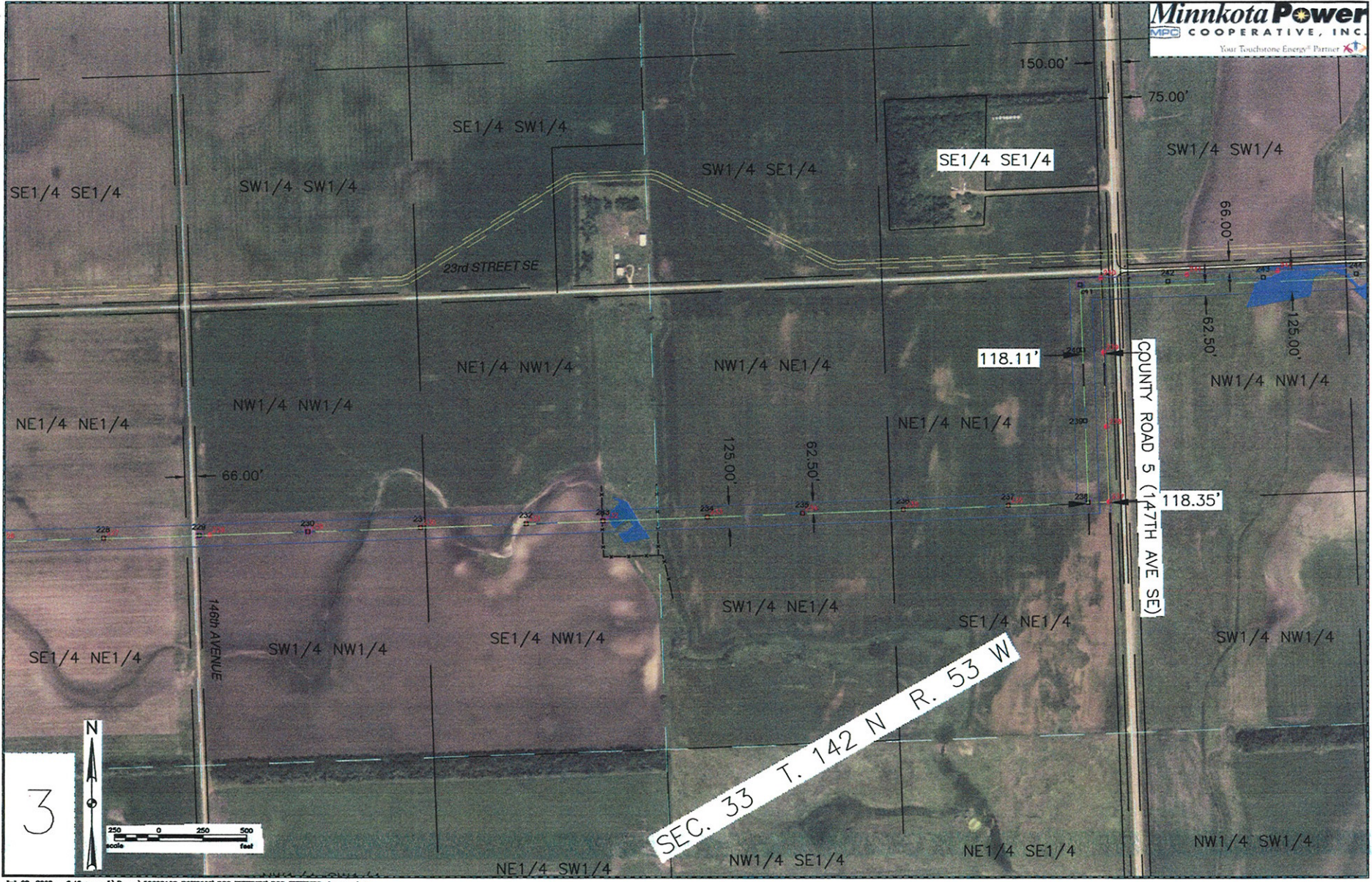
Stanley Consultants, Inc  
9200 E Mineral Ave, Suite 400  
Englewood, CO 80112

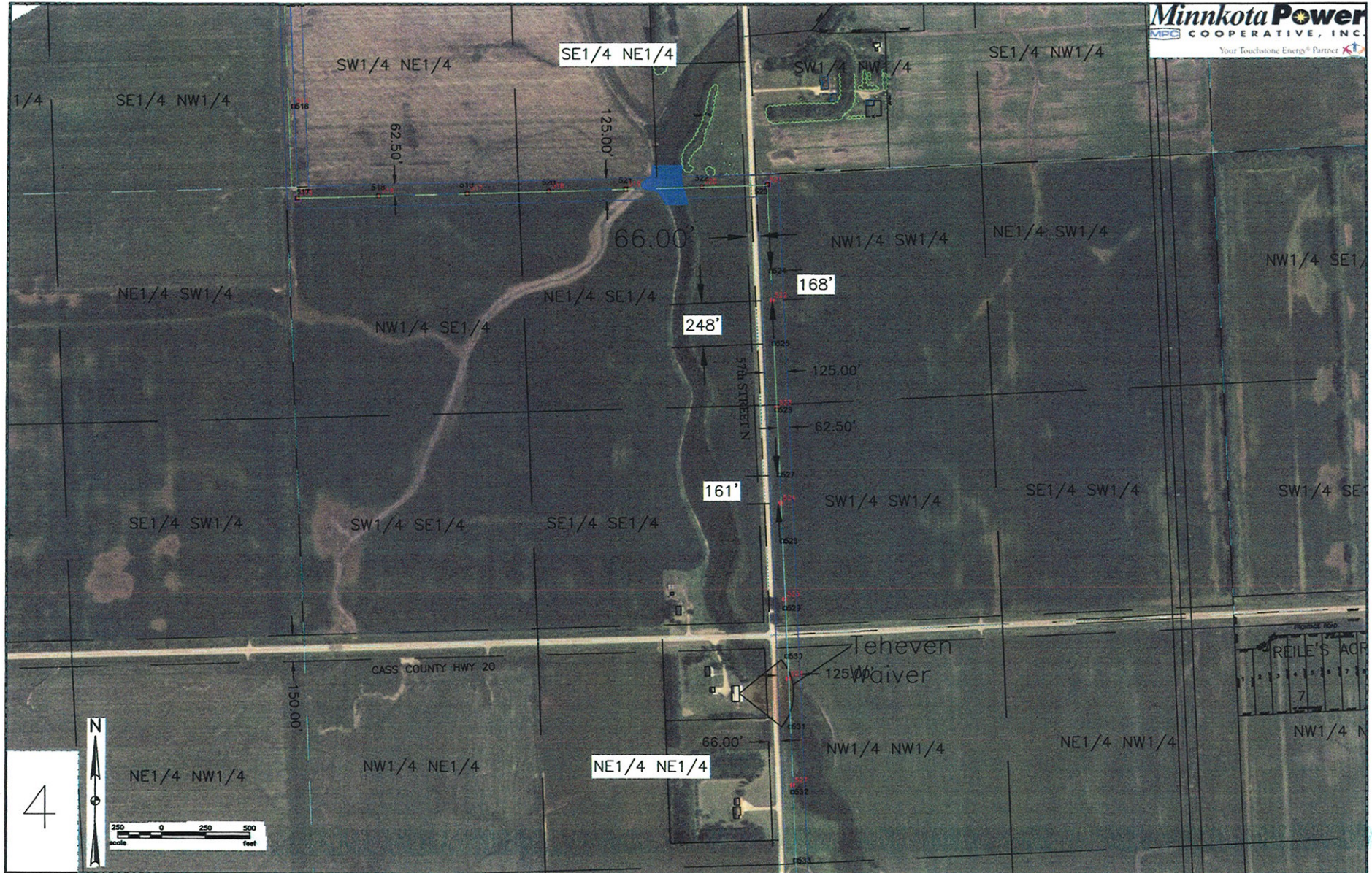
[phillipsduane@stanleygroup.com](mailto:phillipsduane@stanleygroup.com)

<<psc poles(1).pdf>>











SEC. 20 T. 140 N R. 49 W

SEC. 21 T. 140 N R. 49 W

