

DESIGN CONDITIONS
 0.465' CROWN, 24 FIBER
 20% RTS @ -20 DEGREES F, INITIAL
 CLEARANCE LINE 30'

1272 ACSR 45/7 "BITTERN"
 20% RTS @ -20 DEGREES F, INITIAL

REV	DATE	APP	DESCRIPTION	TMP	DPTH
0	06/06/08	MFJ	ISSUED FOR CONSTRUCTION		

Stanley Consultants INC.
 A STANLEY GROUP COMPANY
 ENGINEERING, ENVIRONMENTAL AND
 CONSTRUCTION SERVICES - WORLDWIDE

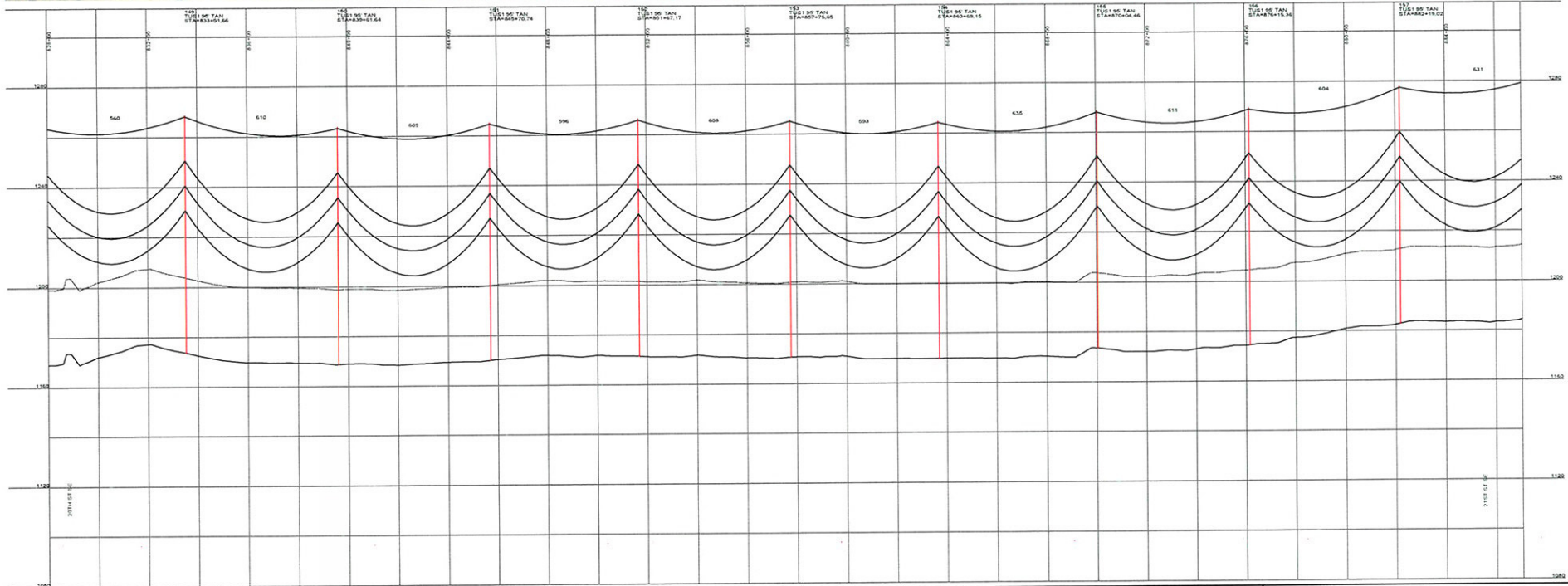
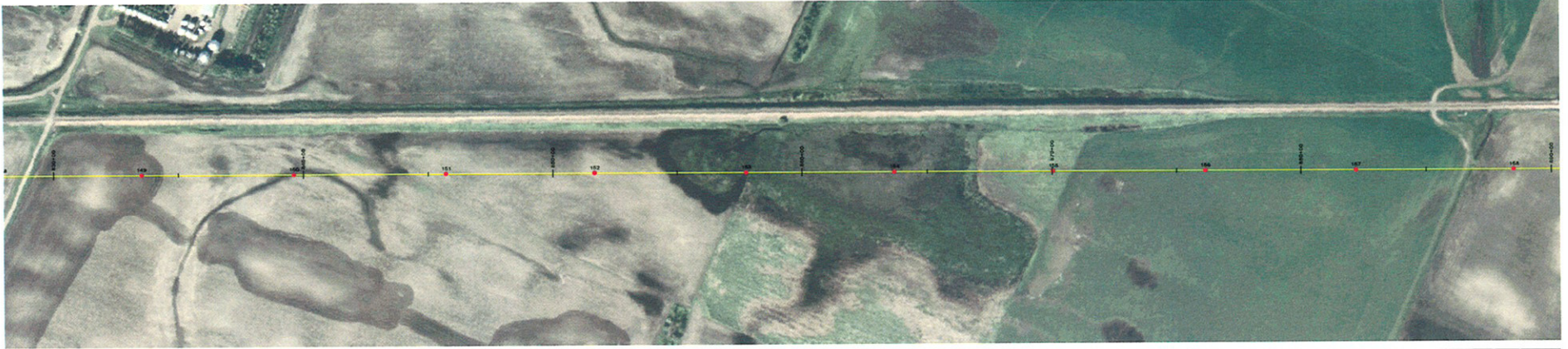
9200 E. MINERAL AVE.
 SUITE 400
 ENGLEWOOD, CO 80112

DESIGNED T. FRANCIS
 DRAWN T. FRANCIS
 CHECKED H. DILLABOUGH
 APPROVED M. JURGEMEYER
 DATE 06/06/08

MINNKOTA POWER COOPERATIVE
GRAND FORKS, ND

400.0 FT. HORIZ. SCALE
 40.0 FT. VERT. SCALE

WIND GENERATION TIE 18 OF 73



DESIGN CONDITIONS
 0.445" CROW, 24 FIBER
 20% RTS @ -20 DEGREES F. INITIAL
 CLEARANCE LINE: 30'

1272 ACGR 45/7 "BITTERN"
 20% RTS @ -20 DEGREES F. INITIAL

REV	DATE	APP	DESCRIPTION	TYP	DPTH
0	06/06/08	MFJ	ISSUED FOR CONSTRUCTION		

Stanley Consultants INC.
 9200 E. MINERAL AVE.
 SUITE 400
 ENGLEWOOD, CO 80112

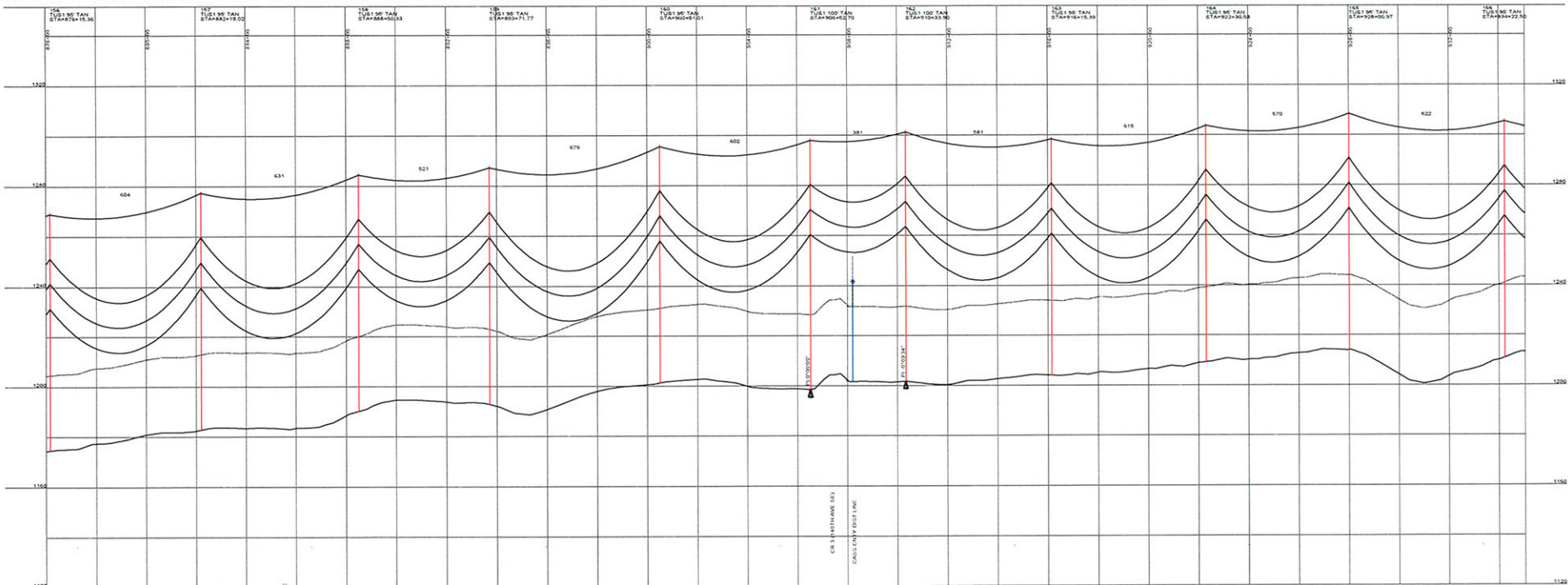
A STANLEY GROUP COMPANY
 ENGINEERING, ENVIRONMENTAL AND
 CONSTRUCTION SERVICES - WORLDWIDE

DESIGNED T. FRANCIS
 DRAWN T. FRANCIS
 CHECKED H. DILLABOUGH
 APPROVED M. JURGEMEYER
 APPROVED _____
 DATE 06/06/08

MINNKOTA POWER COOPERATIVE
GRAND FORKS, ND

400.0 FT. HORIZ. SCALE
 400.0 FT. VERT. SCALE

WIND GENERATION TIE 19 OF 73



DESIGN CONDITIONS
 0.465' CROW, 2.4' FIBER
 1272 ACSR 45/7 'BITTERN'
 20% RTS @ -20 DEGREES F. INITIAL 20% RTS @ -20 DEGREES F. INITIAL
 CLEARANCE LINE 30'

REV	DATE	APP	DESCRIPTION	QFTR
0	06/06/08	MFJ	ISSUED FOR CONSTRUCTION	TMF

Stanley Consultants inc.
 9200 E. MINERAL AVE.
 SUITE 400
 ENGLEWOOD, CO 80112

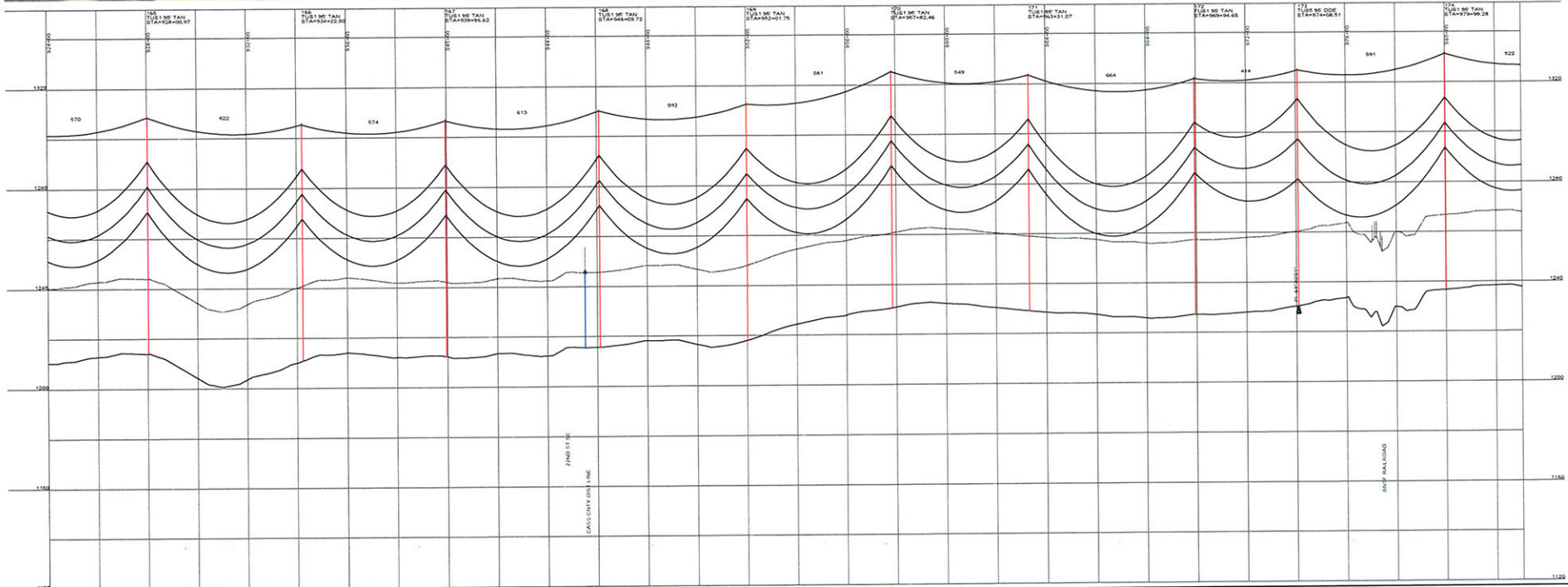
A STANLEY GROUP COMPANY
 ENGINEERING, ENVIRONMENTAL AND
 CONSTRUCTION SERVICES - WORLDWIDE

DESIGNED T. FRANCIS
 DRAWN T. FRANCIS
 CHECKED H. DILLABOUGH
 APPROVED M. JURGENMEYER
 APPROVED _____
 DATE 06/06/08

MINNKOTA POWER COOPERATIVE
GRAND FORKS, ND

400.0 FT. HORIZ. SCALE
 40.0 FT. VERT. SCALE


WIND GENERATION TIE 20 OF 73



DESIGN CONDITIONS
 0.465" CPQW, 24 FIBER
 20% RTS @ -20 DEGREES F. INITIAL
 CLEARANCE LINE 30'

1272 AC/SR 45/7 "BITTERN"
 20% RTS @ -20 DEGREES F. INITIAL

REV	DATE	APP	DESCRIPTION	DPTS
0	06/06/08	MFJ	ISSUED FOR CONSTRUCTION	TMP



9200 E. MINERAL AVE.
 SUITE 400
 ENGLEWOOD, CO 80112

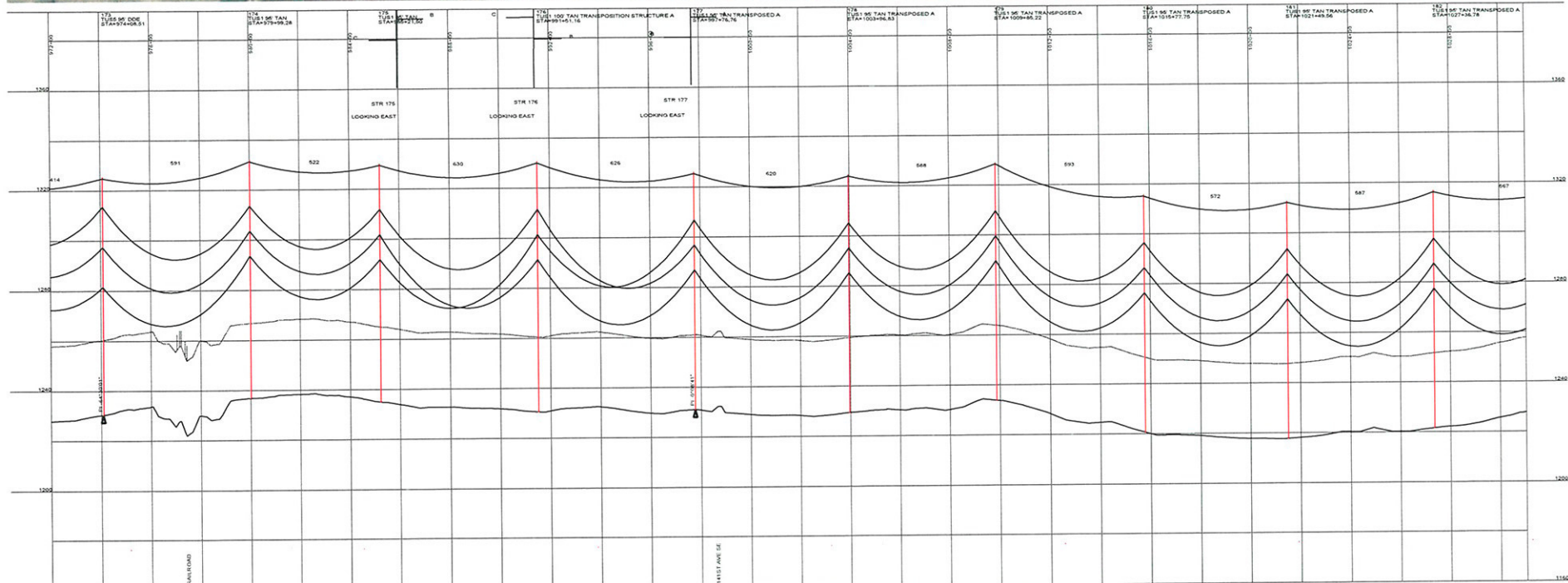
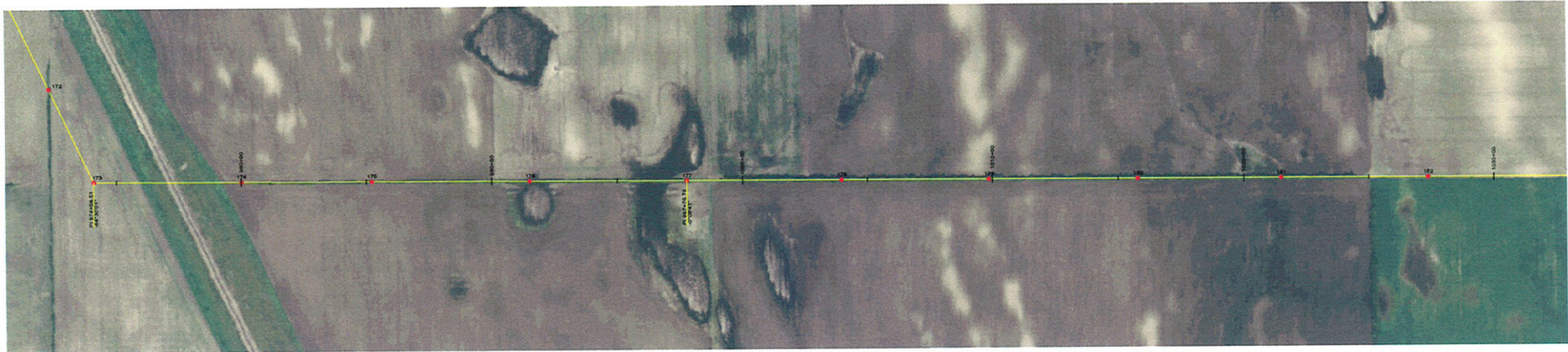
A STANLEY GROUP COMPANY
 ENGINEERING, ENVIRONMENTAL AND
 CONSTRUCTION SERVICES - WORLDWIDE

DESIGNED T. FRANCIS
 DRAWN T. FRANCIS
 CHECKED H. DILLABOUGH
 APPROVED M. JURGEMEYER
 APPROVED _____
 DATE 06/06/08

MINNKOTA POWER COOPERATIVE
GRAND FORKS, ND

400.0 FT. HORIZ. SCALE
 40.0 FT. VERT. SCALE

WIND GENERATION TIE **21 OF 73**



DESIGN CONDITIONS
 0.465" OPGW, 24 FIBER
 20% RTS @ -20 DEGREES F, INITIAL CLEARANCE LINE 30'

1272 ACSR #57 'BITTERTY'
 20% RTS @ -20 DEGREES F, INITIAL

REV	DATE	APP	DESCRIPTION	DTM
0	06/06/08	MFJ	ISSUED FOR CONSTRUCTION	

Stanley Consultants INC.
 9208 E. MINERAL AVE.
 SUITE 400
 ENGLEWOOD, CO 80112

A STANLEY GROUP COMPANY
 ENGINEERING, ENVIRONMENTAL AND
 CONSTRUCTION SERVICES - WORLDWIDE

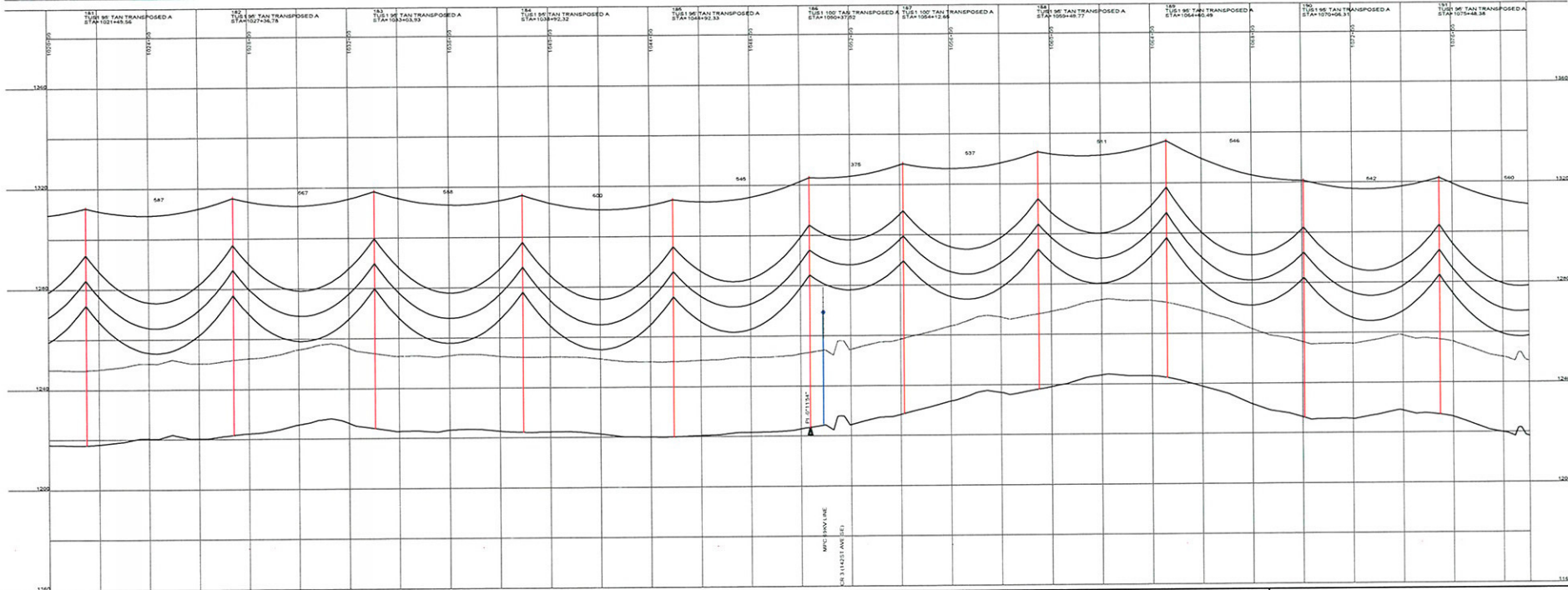
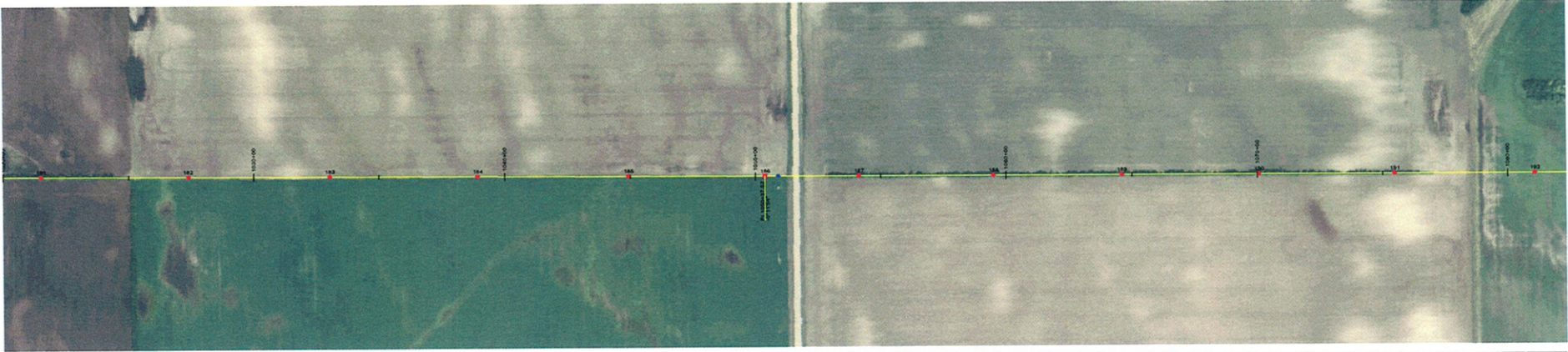
DESIGNED T. FRANCIS
 DRAWN T. FRANCIS
 CHECKED H. DILLABOUGH
 APPROVED M. JURGEMEYER
 DATE 06/06/08

MINNKOTA POWER COOPERATIVE
 GRAND FORKS, ND

400.0 FT. HORIZ. SCALE
 40.0 FT. VERT. SCALE

↑ NORTH

WIND GENERATION TIE 22 OF 73



DESIGN CONDITIONS
 0.445" OPGW, 24 FIBER
 20% RTS @ -30 DEGREES F. INITIAL
 CLEARANCE LINE 30'

1273 ACSR 45/7 "BITTERN"
 20% RTS @ -20 DEGREES F. INITIAL

REV	DATE	APP	DESCRIPTION	DFTF
0	06/06/08	MFJ	ISSUED FOR CONSTRUCTION	TMF

Stanley Consultants INC.
 9200 E. MINERAL AVE.
 SUITE 400
 ENGLEWOOD, CO 80112

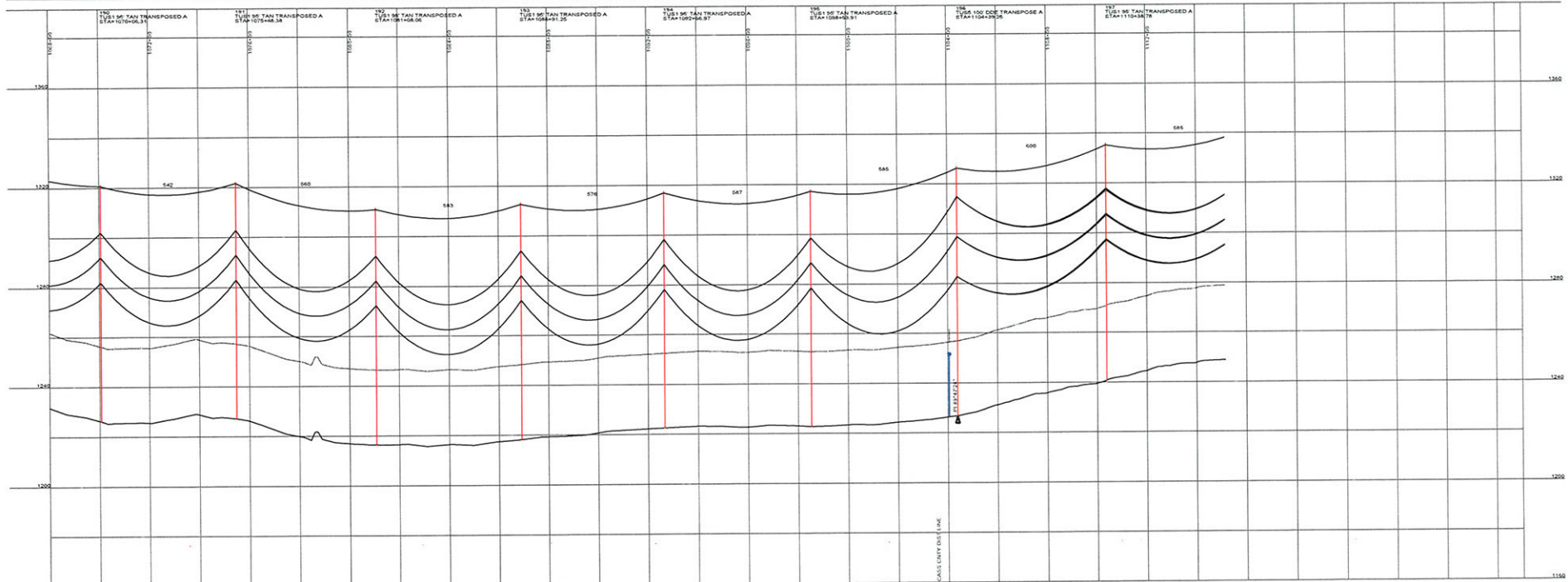
A STANLEY GROUP COMPANY
 ENGINEERING, ENVIRONMENTAL AND
 CONSTRUCTION SERVICES - WORLDWIDE

DESIGNED T. FRANCIS
 DRAWN T. FRANCIS
 CHECKED H. DILLABOUGH
 APPROVED M. JURGEMEYER
 APPROVED _____
 DATE 06/06/08

MINNKOTA POWER COOPERATIVE
GRAND FORKS, ND

400.0 FT. HORIZ. SCALE
 40.0 FT. VERT. SCALE

WIND GENERATION TIE 23 OF 73



DESIGN CONDITIONS
 0-45° CROW, 24 FIBER
 20% RTS @ -20 DEGREES F. INITIAL
 CLEARANCE LINE 30

1273 ACSR 45/7 "BITTERN"
 20% RTS @ -20 DEGREES F. INITIAL

REV	DATE	APP	DESCRIPTION	TMF	DFTM
0	06/06/08	MFJ	ISSUED FOR CONSTRUCTION		



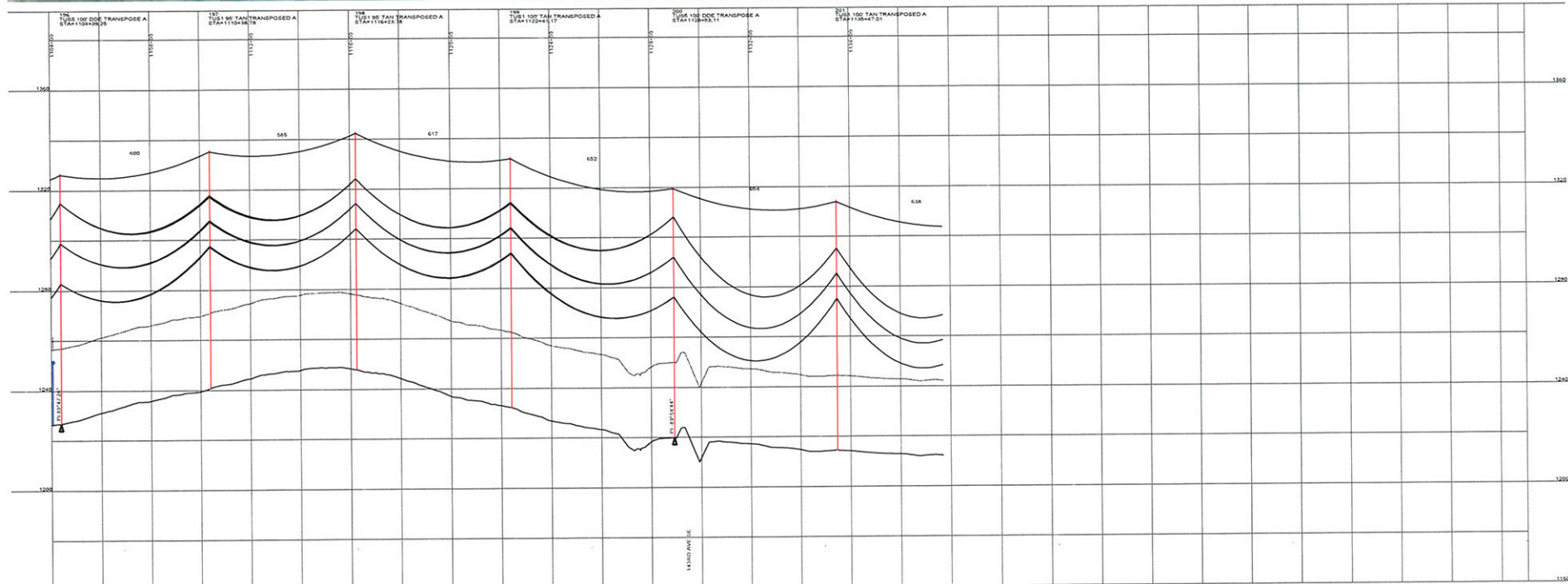
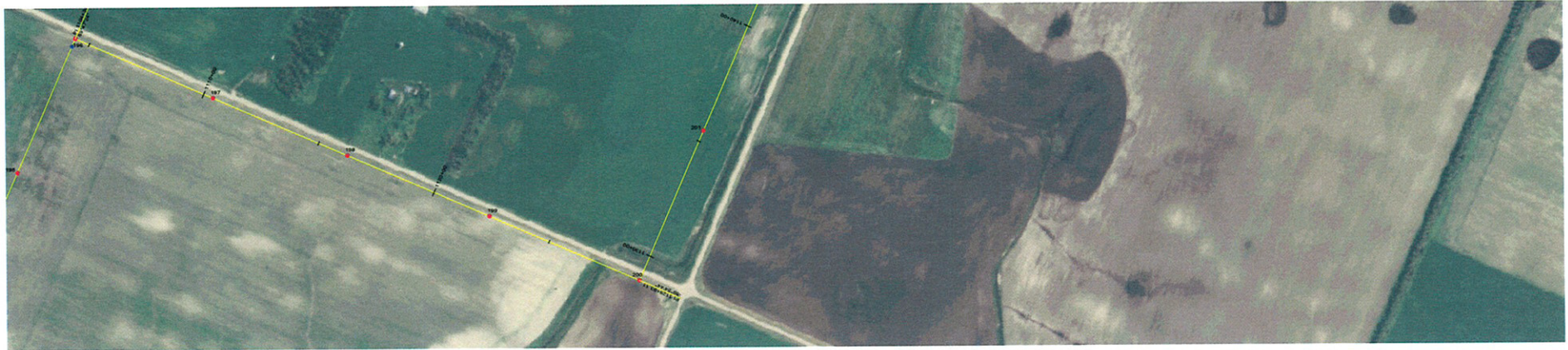
9200 E. MINERAL AVE.
 SUITE 400
 ENGLEWOOD, CO 80112

Stanley Consultants INC.
 A STANLEY GROUP COMPANY
 ENGINEERING, ENVIRONMENTAL AND
 CONSTRUCTION SERVICES - WORLDWIDE

DESIGNED T. FRANCIS
 DRAWN T. FRANCIS
 CHECKED H. DILLABOUGH
 APPROVED M. JURGEMEYER
 DATE 06/06/08

MINNKOTA POWER COOPERATIVE
GRAND FORKS, ND





DESIGN CONDITIONS: 1272 ACSR 457 "BITTERN"
 0.465" O'POW, 24 FIBER
 20% RTS @ -20 DEGREES F. INITIAL 20% RTS @ -20 DEGREES F. INITIAL
 CLEARANCE LINE 30'

REV	DATE	APP	DESCRIPTION	DTM
0	06/06/08	MFJ	ISSUED FOR CONSTRUCTION	TMF

Stanley Consultants INC.
 9209 E. MINERAL AVE.
 SUITE 400
 ENGLEWOOD, CO 80112

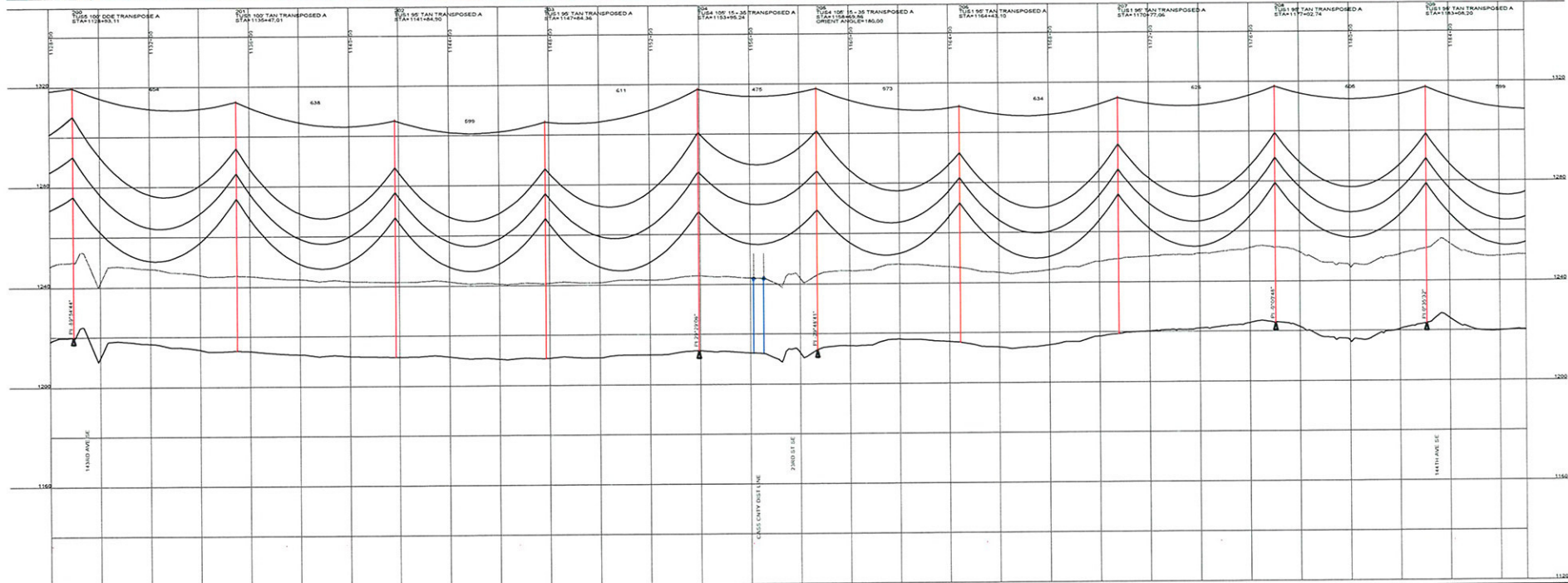
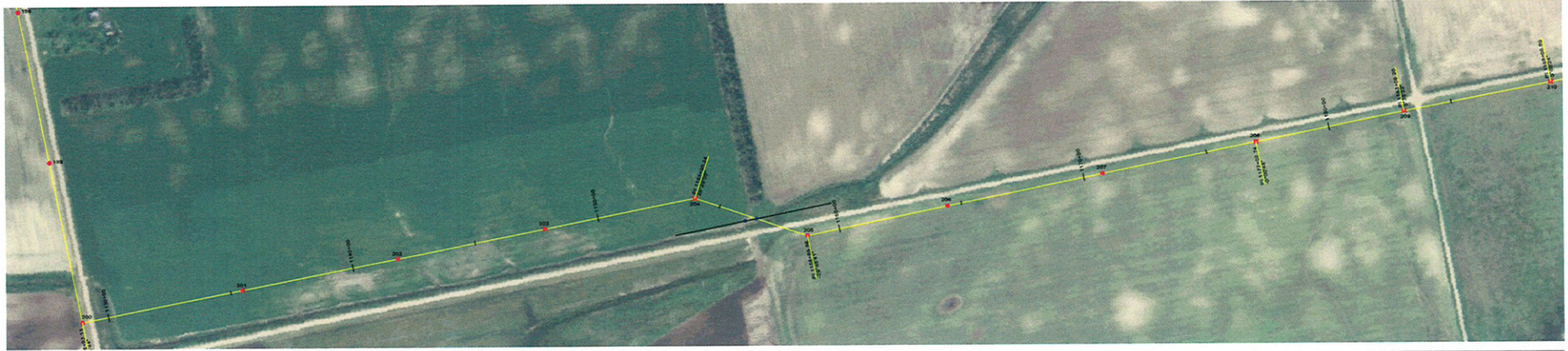
A STANLEY GROUP COMPANY
 ENGINEERING, ENVIRONMENTAL AND
 CONSTRUCTION SERVICES - WORLDWIDE

DESIGNED T. FRANCIS
 DRAWN T. FRANCIS
 CHECKED H. DILLABOUGH
 APPROVED M. JURGEMEYER
 DATE 06/06/08

MINNKOTA POWER COOPERATIVE
 GRAND FORKS, ND

400.0 FT. HORIZ. SCALE
 40.0 FT. VERT. SCALE

WIND GENERATION TIE 25 OF 73



DESIGN CONDITIONS
 0.465' CROWN, 24 FIBER
 20% RTS @ -20 DEGREES F, INITIAL
 CLEARANCE LINE 30'

1273 ACSR 45/7 "BITTERN"

REV	DATE	APP	DESCRIPTION	TMP	DTR
0	06/06/08	MFJ	ISSUED FOR CONSTRUCTION		

Stanley Consultants inc.

9200 E. MINERAL AVE.
 SUITE 400
 ENGLEWOOD, CO 80112

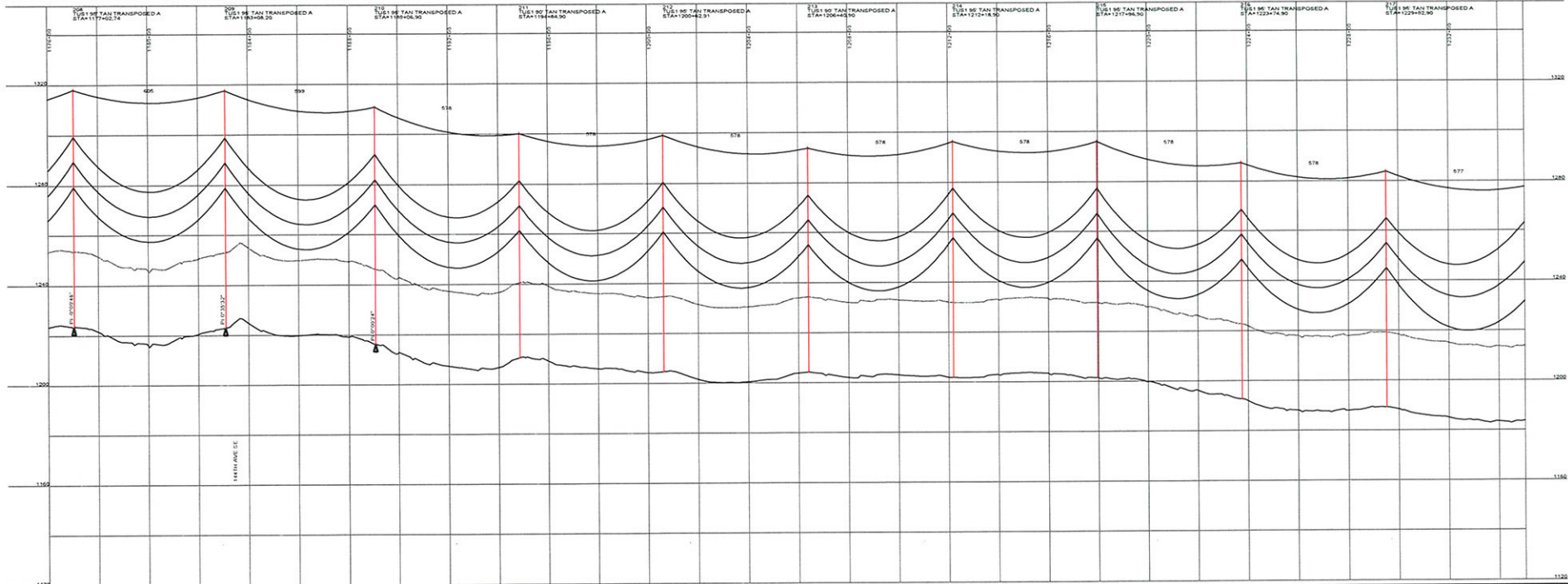
A STANLEY GROUP COMPANY
 ENGINEERING, ENVIRONMENTAL AND
 CONSTRUCTION SERVICES - WORLDWIDE

DESIGNED T. FRANCIS
 DRAWN T. FRANCIS
 CHECKED H. DILLABOUGH
 APPROVED M. JURGEMEYER
 APPROVED _____
 DATE 06/06/08

MINNKOTA POWER COOPERATIVE
 GRAND FORKS, ND

400.0 FT. HORIZ. SCALE
 40.0 FT. VERT. SCALE

WIND GENERATION TIE 26 OF 73



DESIGN CONDITIONS
 0.46% CROWN, 2.4% FIBER
 1272 ACSR 45/7 'BITTERN'
 20% RTS @ -20 DEGREES F. INITIAL
 20% RTS @ -20 DEGREES F. INITIAL
 CLEARANCE LINE 30'

REV	DATE	APP	DESCRIPTION	DMR
0	06/06/08	MPJ	ISSUED FOR CONSTRUCTION	TMF

9200 E. MINERAL AVE.
 SUITE 400
 ENGLEWOOD, CO 80112

A STANLEY GROUP COMPANY
 ENGINEERING, ENVIRONMENTAL AND
 CONSTRUCTION SERVICES - WORLDWIDE

DESIGNED T. FRANCIS
 DRAWN T. FRANCIS
 CHECKED H. DILLABOUGH
 APPROVED M. JURGEMEYER
 DATE 06/06/08

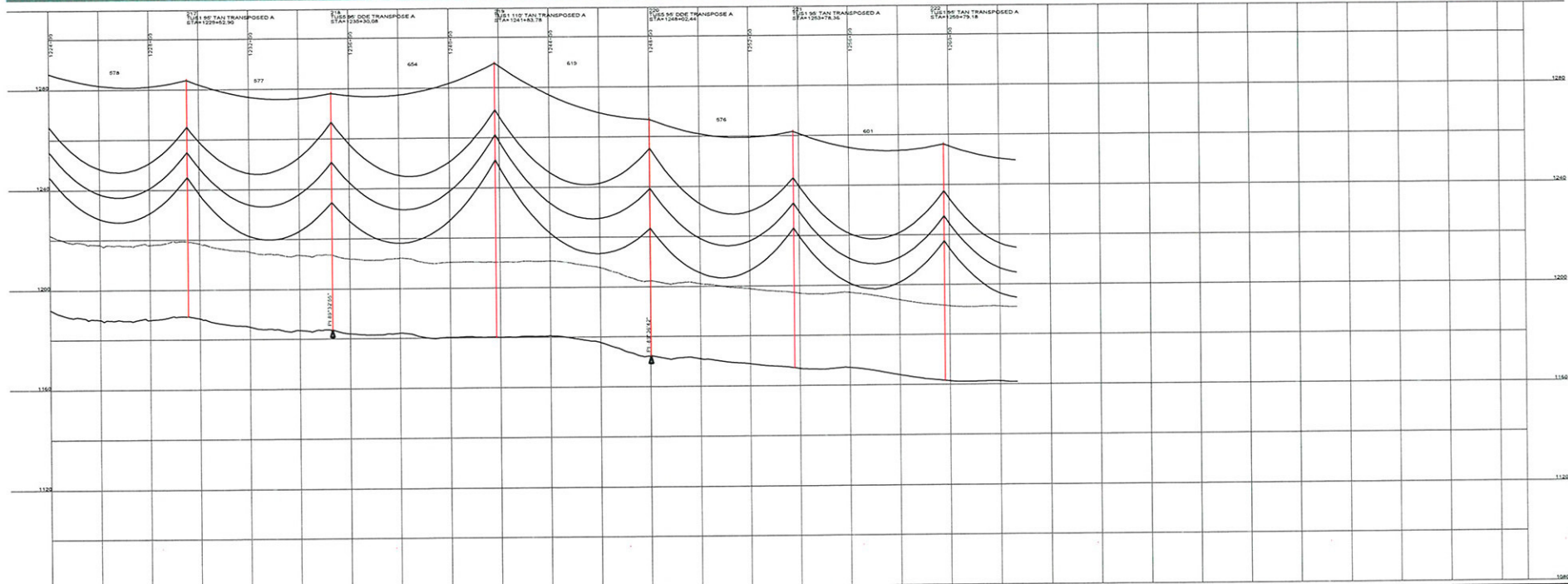
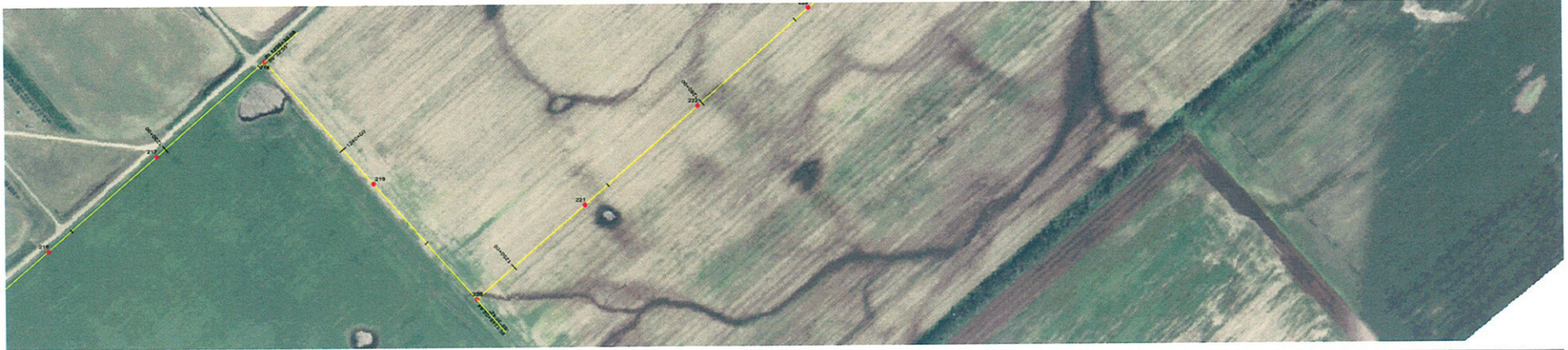
MINNKOTA POWER COOPERATIVE
 GRAND FORKS, ND

400.0 FT. HORIZ. SCALE
 40.0 FT. VERT. SCALE

↑ NORTH

WIND GENERATION TIE

27 OF 73



DESIGN CONDITIONS
 0.465" OPDW, 24 FIBER
 20% RTS @ -20 DEGREES F. INITIAL 20% RTS @ -20 DEGREES F. INITIAL
 CLEARANCE LINE 30'

REV	DATE	APP	DESCRIPTION	DTM
0	06/06/08	MFJ	ISSUED FOR CONSTRUCTION	TMF

Stanley Consultants INC.
 9200 E. MINERAL AVE.
 SUITE 400
 ENGLEWOOD, CO 80112

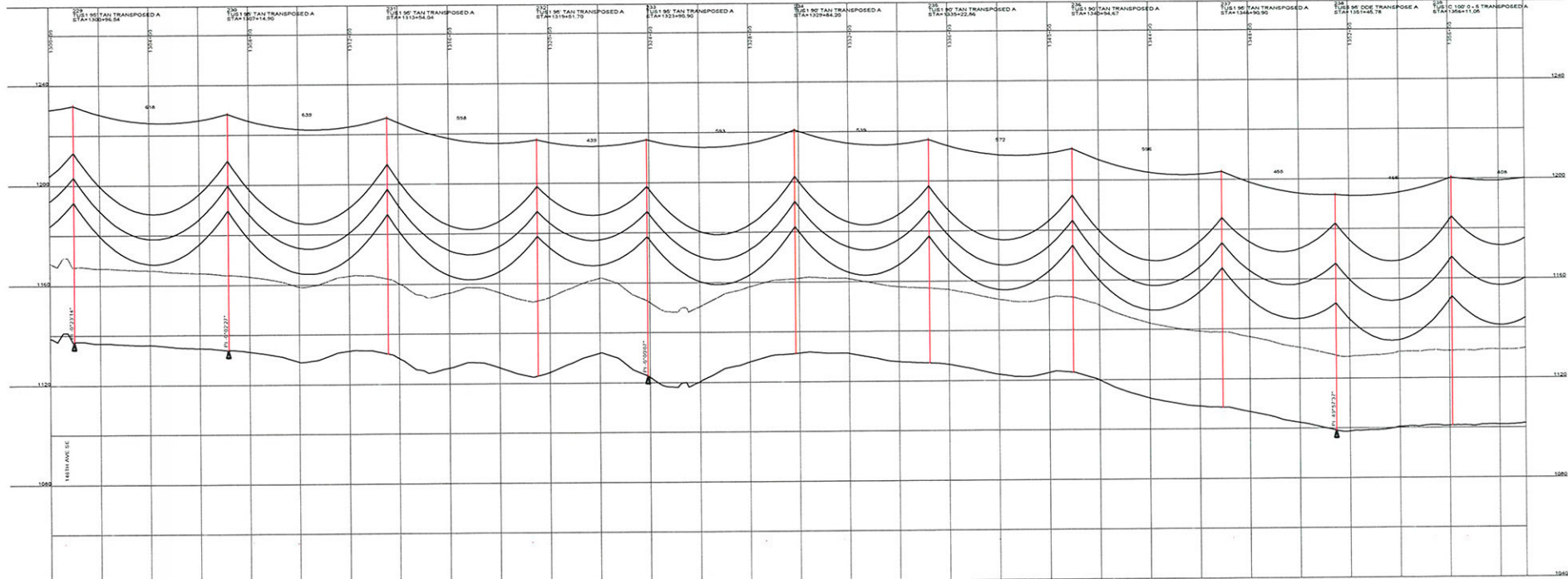
A STANLEY GROUP COMPANY
 ENGINEERING, ENVIRONMENTAL AND
 CONSTRUCTION SERVICES - WORLDWIDE

DESIGNED T. FRANCIS
 DRAWN T. FRANCIS
 CHECKED H. DILLABOUGH
 APPROVED M. JURGEMEYER
 APPROVED _____
 DATE 06/06/08

MINNKOTA POWER COOPERATIVE
GRAND FORKS, ND

400.0 FT HORIZ. SCALE
 40.0 FT VERT. SCALE

WIND GENERATION TIE 28 OF 73



DESIGN CONDITIONS
 0.445" OPGW, 24 FIBER
 20% RTS @ +20 DEGREES F, INITIAL
 CLEARANCE LINE 30'

1272 ACSR 457 "BITTERRY"
 20% RTS @ -20 DEGREES F, INITIAL

REV	DATE	APP	DESCRIPTION	TMF	DFTM
0	06/06/08	MFJ	ISSUED FOR CONSTRUCTION		



9200 E. MINERAL AVE.
 SUITE 400
 ENGLEWOOD, CO 80112

A STANLEY GROUP COMPANY
 ENGINEERING, ENVIRONMENTAL AND
 CONSTRUCTION SERVICES - WORLDWIDE

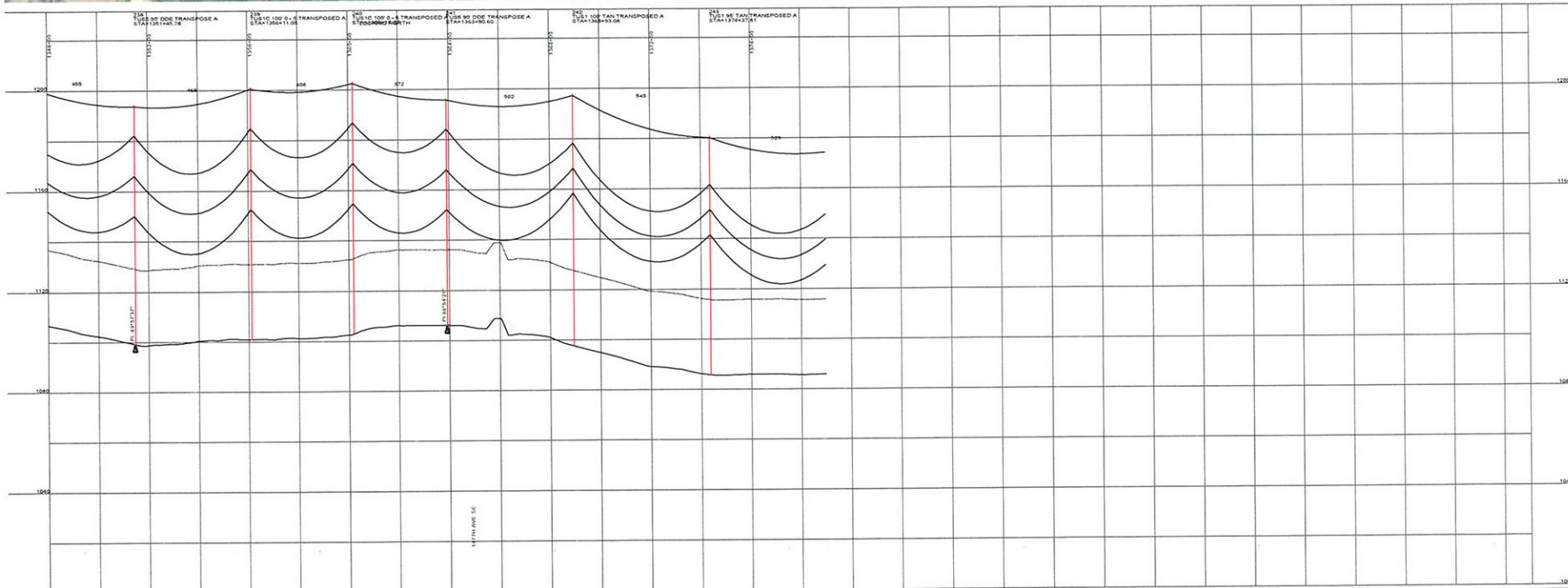
DESIGNED T. FRANCIS
 DRAWN T. FRANCIS
 CHECKED H. DILLABOUGH
 APPROVED M. JURGENMEYER
 DATE 06/06/08

MINNKOTA POWER COOPERATIVE
GRAND FORKS, ND

400.0 FT. HORIZ. SCALE
 40.0 FT. VERT. SCALE

↑ NORTH

WIND GENERATION TIE 30 OF 73



DESIGN CONDITIONS
 0.465" COPW, 24 FIBER
 20% RTS @ -20 DEGREES F. INITIAL
 CLEARANCE LINE 30'

1272 ACSR 45/7 "BITTERN"

20% RTS @ -20 DEGREES F. INITIAL

REV	DATE	APP	DESCRIPTION	DTM
0	06/06/08	MFJ	ISSUED FOR CONSTRUCTION	TMF

Stanley Consultants INC.

9200 E. MINERAL AVE.
 SUITE 400
 ENGLEWOOD, CO 80112

A STANLEY GROUP COMPANY
 ENGINEERING, ENVIRONMENTAL AND
 CONSTRUCTION SERVICES - WORLDWIDE

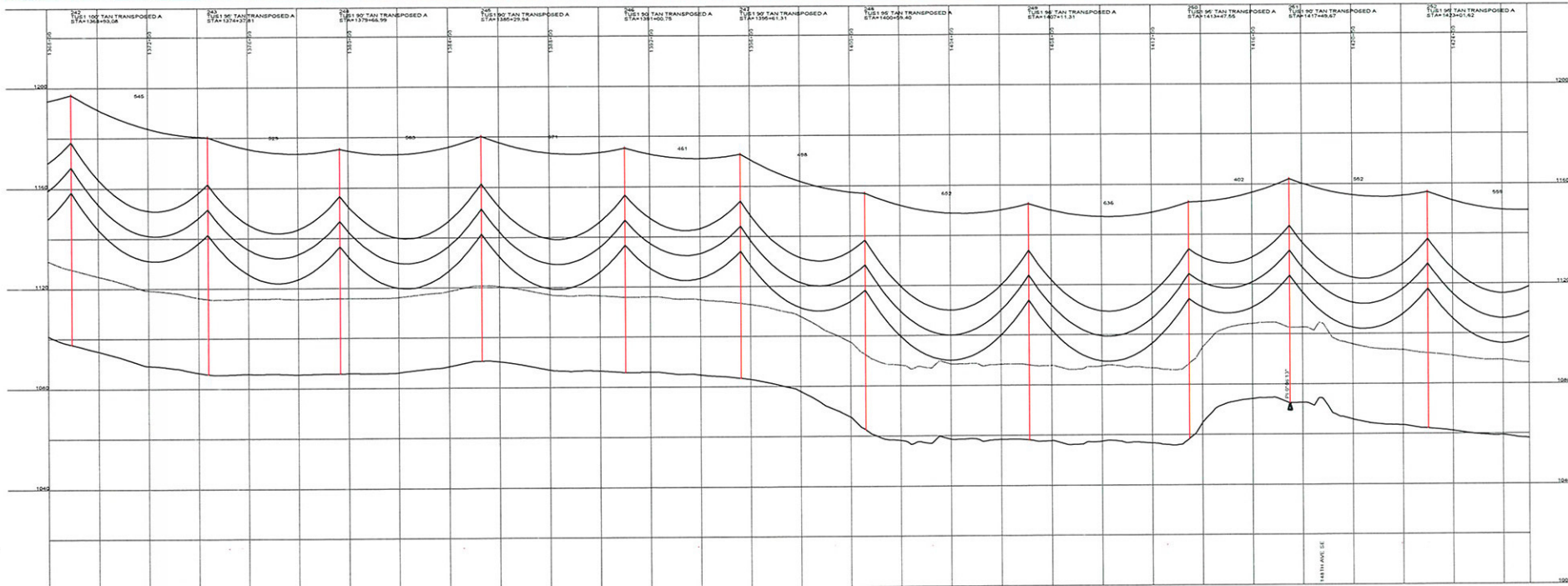
DESIGNED T. FRANCIS
 DRAWN T. FRANCIS
 CHECKED H. DILLABOUGH
 APPROVED M. JURGENMEYER
 APPROVED _____
 DATE 06/06/08

MINNKOTA POWER COOPERATIVE
GRAND FORKS, ND

400.0 FT. HORIZ. SCALE
 80.0 FT. VERT. SCALE

WIND GENERATION TIE

31 OF 73



DESIGN CONDITIONS
 0.655' GROW 24 FIBER
 20% RTS @ -20 DEGREES F INITIAL
 CLEARANCE LINE 30'

1272 ACGR 45/7 "BITTERN"
 20% RTS @ -20 DEGREES F INITIAL

REV	DATE	APP	DESCRIPTION	TMF	DFTM
0	06/06/08	MFJ	ISSUED FOR CONSTRUCTION		

Stanley Consultants INC.
 9200 E. MINERAL AVE.
 SUITE 400
 ENGLEWOOD, CO 80112

A STANLEY GROUP COMPANY
 ENGINEERING, ENVIRONMENTAL AND
 CONSTRUCTION SERVICES - WORLDWIDE

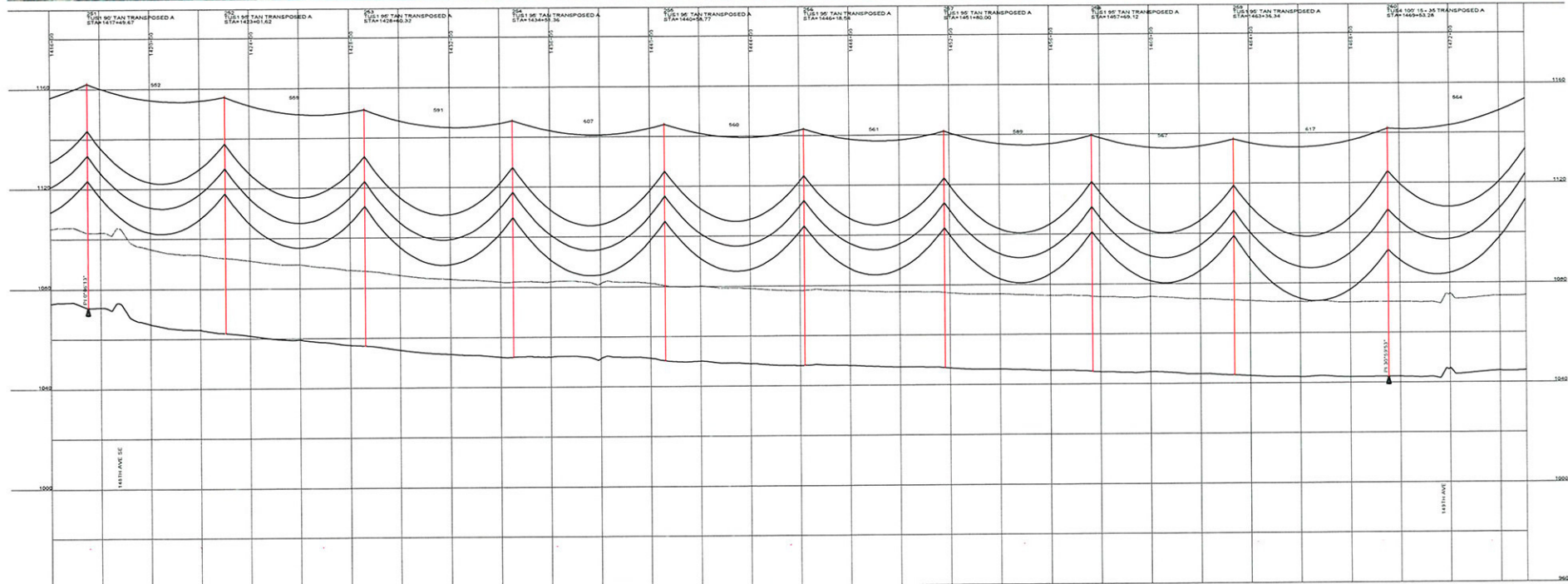
DESIGNED T. FRANCIS
 DRAWN T. FRANCIS
 CHECKED H. DILLABOUGH
 APPROVED M. JURGEMEYER
 APPROVED _____
 DATE 06/06/08

MINNKOTA POWER COOPERATIVE
 GRAND FORKS, ND

WIND GENERATION TIE 32 OF 73

400.0 FT. HORIZ. SCALE
 40.0 FT. VERT. SCALE

↑ NORTH



DESIGN CONDITIONS
 0.455" OD GW, 24 FIBER
 20% RTS @ -20 DEGREES F, INITIAL
 CLEARANCE LINE 30

1272 ACSR 457 "BITTERRY"
 20% RTS @ -20 DEGREES F, INITIAL

REV	DATE	APP	DESCRIPTION	TMF	DTM
0	06/06/08	MFJ	ISSUED FOR CONSTRUCTION		

Stanley Consultants INC.
 9200 E. MINERAL AVE.
 SUITE 400
 ENGLEWOOD, CO 80112

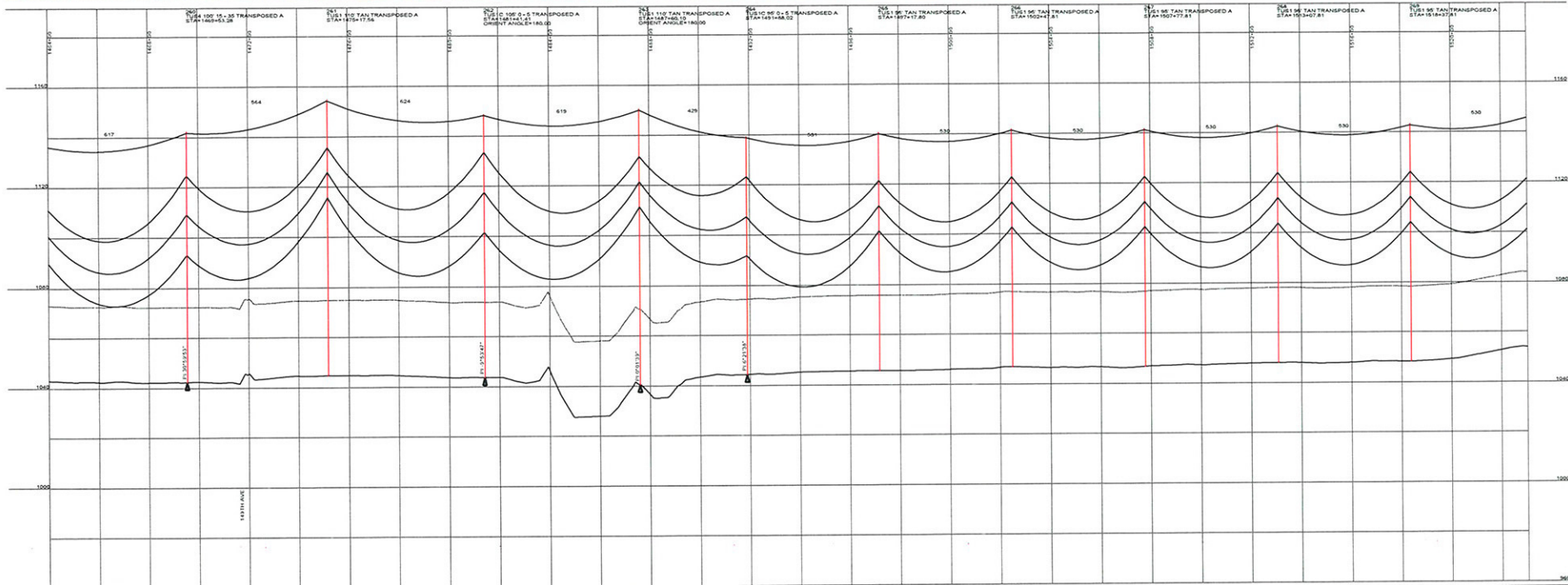
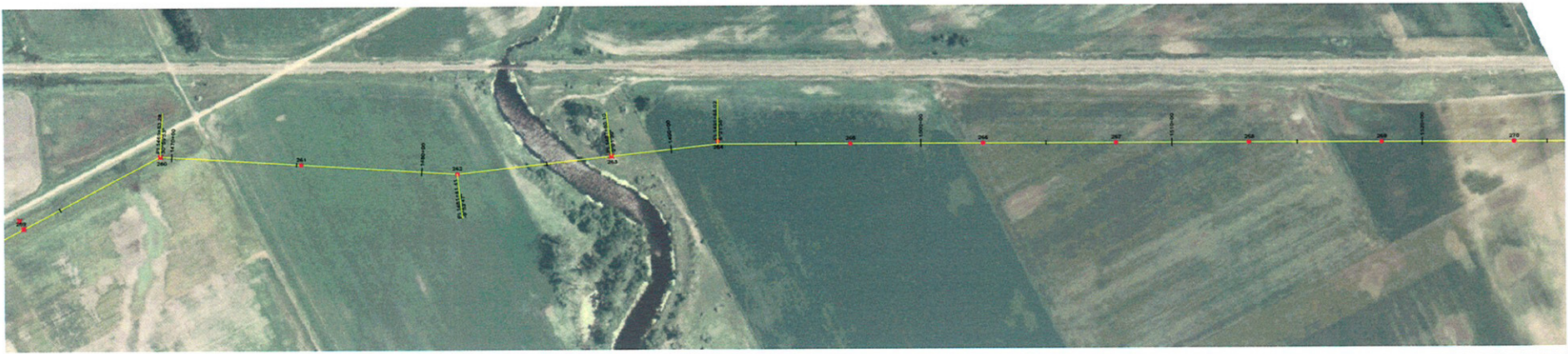
A STANLEY GROUP COMPANY
 ENGINEERING, ENVIRONMENTAL AND
 CONSTRUCTION SERVICES - WORLDWIDE

DESIGNED T. FRANCIS
 DRAWN T. FRANCIS
 CHECKED H. DILLABOUGH
 APPROVED M. JURGEMEYER
 DATE 06/06/08

MINNKOTA POWER COOPERATIVE
GRAND FORKS, ND

400.0 FT. HORIZ. SCALE
 45.0 FT. VERT. SCALE

WIND GENERATION TIE 33 OF 73



DESIGN CONDITIONS
 0.445" OD/IN. 24 FIBER
 20% RTS @ -20 DEGREES F. INITIAL
 CLEARANCE LINE 30'

1272 ACSR 45/7 "BITTERN"
 20% RTS @ -20 DEGREES F. INITIAL

REV	DATE	APP	DESCRIPTION	TMF	DFTM
0	06/06/08	MFJ	ISSUED FOR CONSTRUCTION		

Stanley Consultants INC.
 9200 E. MINERAL AVE.
 SUITE 400
 ENGLEWOOD, CO 80112

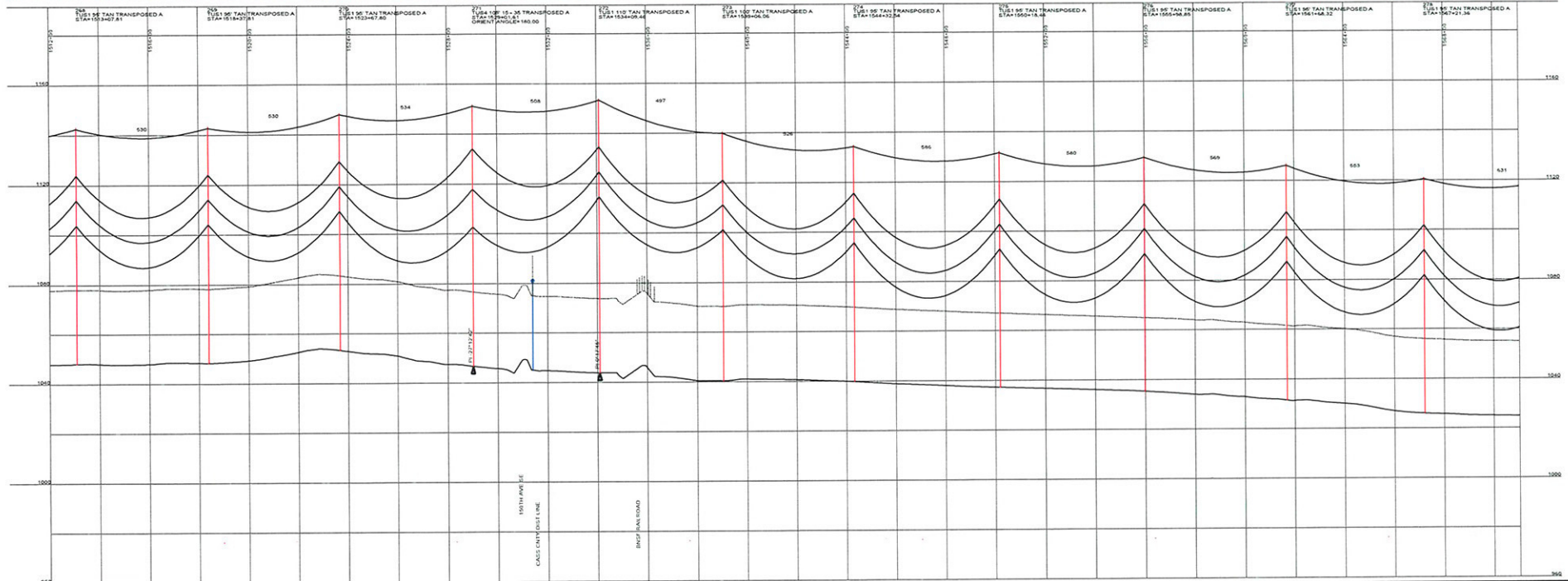
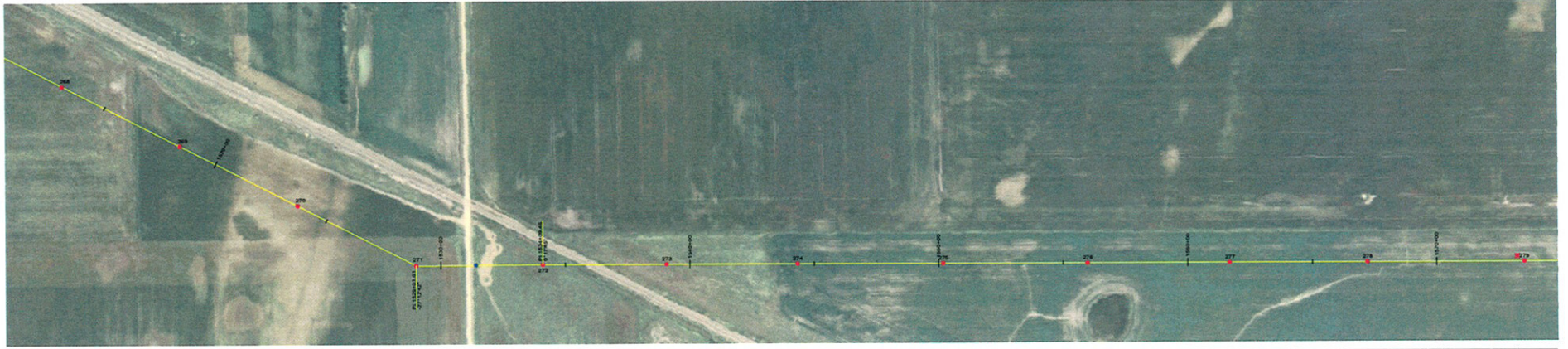
A STANLEY GROUP COMPANY
 ENGINEERING, ENVIRONMENTAL AND
 CONSTRUCTION SERVICES - WORLDWIDE

DESIGNED T. FRANCIS
 DRAWN T. FRANCIS
 CHECKED H. DILLABOUGH
 APPROVED M. JURGENMEYER
 DATE 06/06/08

MINNKOTA POWER COOPERATIVE
GRAND FORKS, ND

400.0 FT. HORIZ. SCALE
 40.0 FT. VERT. SCALE

WIND GENERATION TIE 34 OF 73



DESIGN CONDITIONS
 0.465" OROW, 2.4 FIBER
 20% RTS @ -20 DEGREES F. INITIAL CLEARANCE LINE 30'

1272 ACSR 45/7 "BITTERN"
 20% RTS @ -20 DEGREES F. INITIAL

REV	DATE	APP	DESCRIPTION	TMF	DFTR
0	06/06/08	MFJ	ISSUED FOR CONSTRUCTION		

Stanley Consultants INC.
 9200 E. MINERAL AVE.
 SUITE 400
 ENGLEWOOD, CO 80112

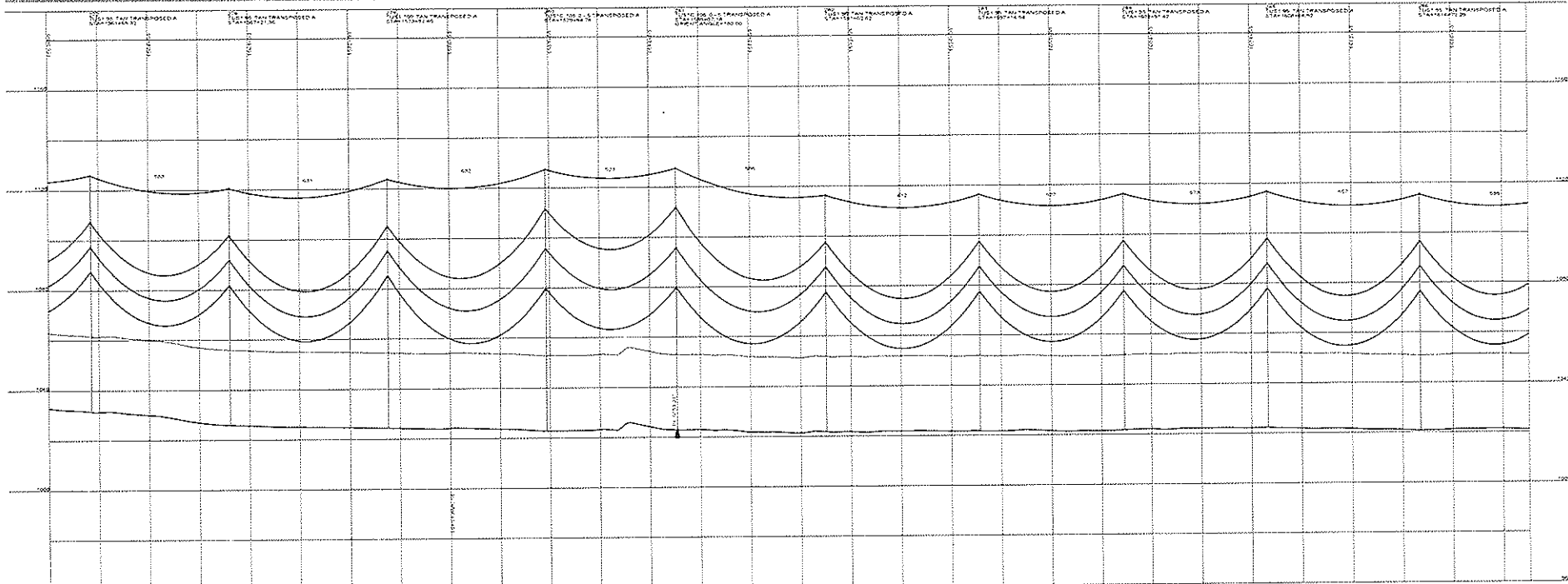
A STANLEY GROUP COMPANY
 ENGINEERING, ENVIRONMENTAL AND
 CONSTRUCTION SERVICES - WORLDWIDE

DESIGNED T. FRANCIS
 DRAWN T. FRANCIS
 CHECKED H. DILLABOUGH
 APPROVED M. JURGEMEYER
 APPROVED _____
 DATE 06/06/08

MINNKOTA POWER COOPERATIVE
GRAND FORKS, ND

400.0 FT. HORIZ. SCALE
 40.0 FT. VERT. SCALE

WIND GENERATION TIE 35 OF 73



DESIGN CONDITIONS
 6.455' OROW 24'000"
 20% RTA @ 30' DESIGN F. ENTAL 20% RTA @ 25' DESIGN F. ENTAL
 CLEARANCE LINE 33

REV	DATE	APP	DESCRIPTION	DTM
0	05/05/04	VFJ	ISSUED FOR CONSTRUCTION	TMP

Stanley Consultants INC.
 5000 E. MINERAL AVE.
 SUITE 400
 ENGLEWOOD CO 80112

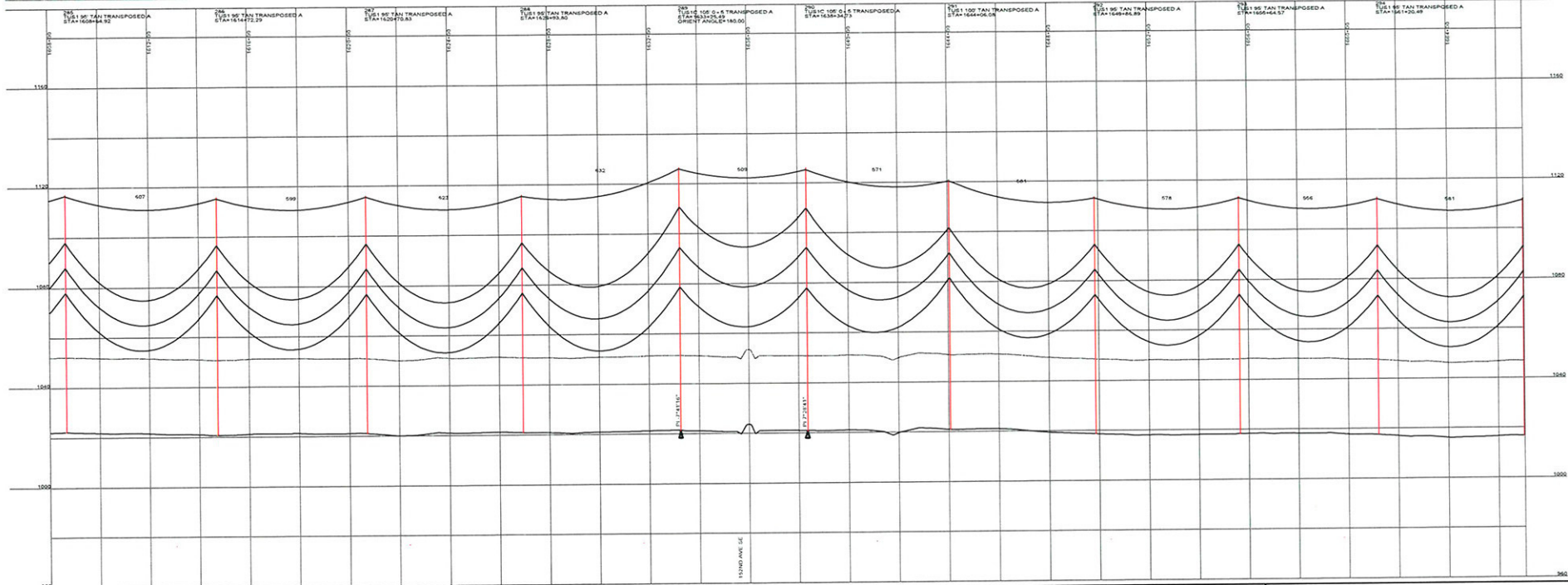
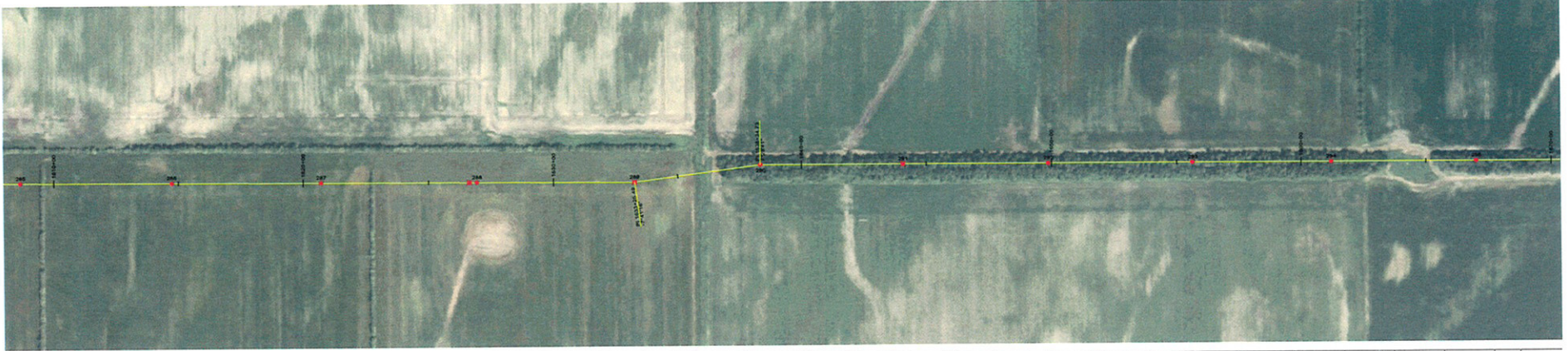
A STANLEY GROUP COMPANY
 ENGINEERING, ENVIRONMENTAL AND
 CONSTRUCTION SERVICES - WORLDWIDE

DESIGNED J. FRANCIS
 DRAWN J. FRANCIS
 CHECKED M. DILLABOUGH
 APPROVED M. JURGENHEIMER
 DATE 06/06/08

MINNKOTA POWER COOPERATIVE
 GRAND FORKS, ND

WIND GENERATION TIE 36 OF 73

1" = 100' HORIZ. SCALE
 1" = 10' VERT. SCALE



DESIGN CONDITIONS
 0.465" OPGW, 24 FIBER
 20% RTS @ -30 DEGREES F, INITIAL CLEARANCE LINE 30'

1272 ACSR 45/7 "BITTERY"
 20% RTS @ -25 DEGREES F, INITIAL

REV	DATE	APP	DESCRIPTION	DPTS
0	06/06/08	MFJ	ISSUED FOR CONSTRUCTION	TMP

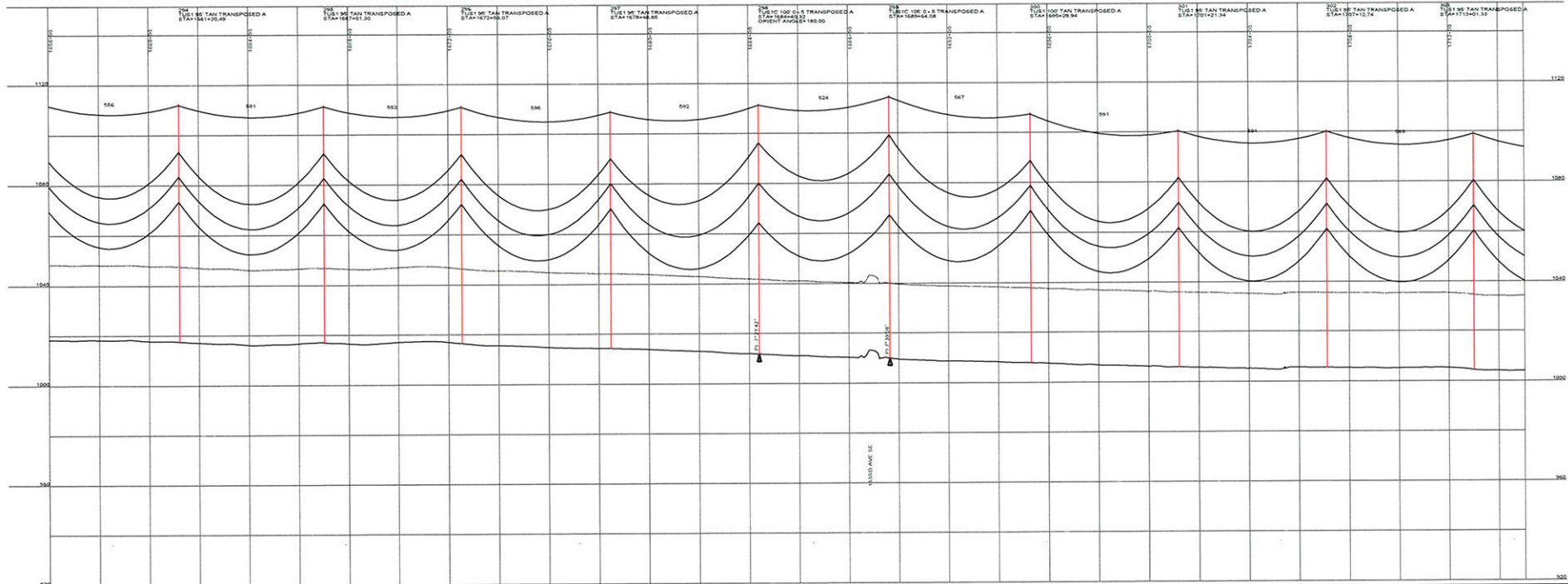
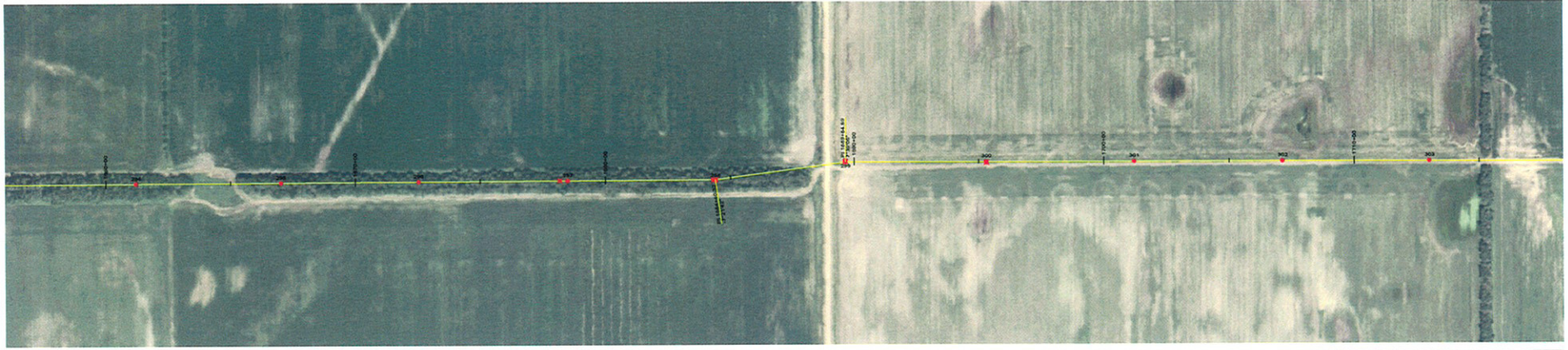

Stanley Consultants INC.
 9200 E. MINERAL AVE.
 SUITE 400
 ENGLEWOOD, CO 80112

A STANLEY GROUP COMPANY
 ENGINEERING, ENVIRONMENTAL AND
 CONSTRUCTION SERVICES - WORLDWIDE

DESIGNED T. FRANCIS
 DRAWN T. FRANCIS
 CHECKED H. DILLABOUGH
 APPROVED M. JURGEMEYER
 APPROVED _____
 DATE 06/06/08

MINNKOTA POWER COOPERATIVE
GRAND FORKS, ND

400.0 FT. HORIZ. SCALE
 40.0 FT. VERT. SCALE
 NORTH



DESIGN CONDITIONS
 0.46% CROW, 2.4 FBIR
 20% RTS @ -20 DEGREES F. INITIAL 20% RTS @ -20 DEGREES F. INITIAL
 CLEARANCE LINE 30'

REV	DATE	APP	DESCRIPTION	DMF	DTR
0	06/06/08	MFJ	ISSUED FOR CONSTRUCTION		

9200 E. MINERAL AVE.
 SUITE 400
 ENGLEWOOD, CO 80112

Stanley Consultants INC.

A STANLEY GROUP COMPANY
 ENGINEERING, ENVIRONMENTAL AND
 CONSTRUCTION SERVICES - WORLDWIDE

DESIGNED T. FRANCIS
 DRAWN T. FRANCIS
 CHECKED H. DILLABOUGH
 APPROVED M. JURGENMEYER
 APPROVED _____
 DATE 06/06/08

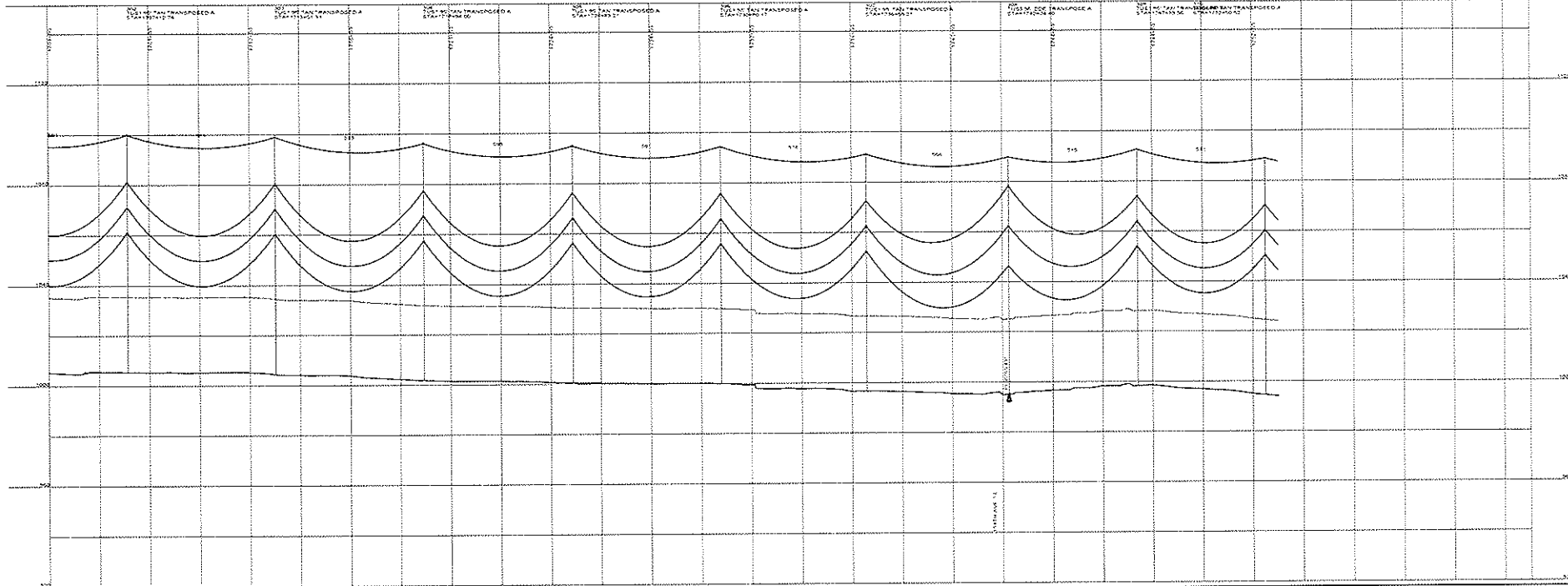
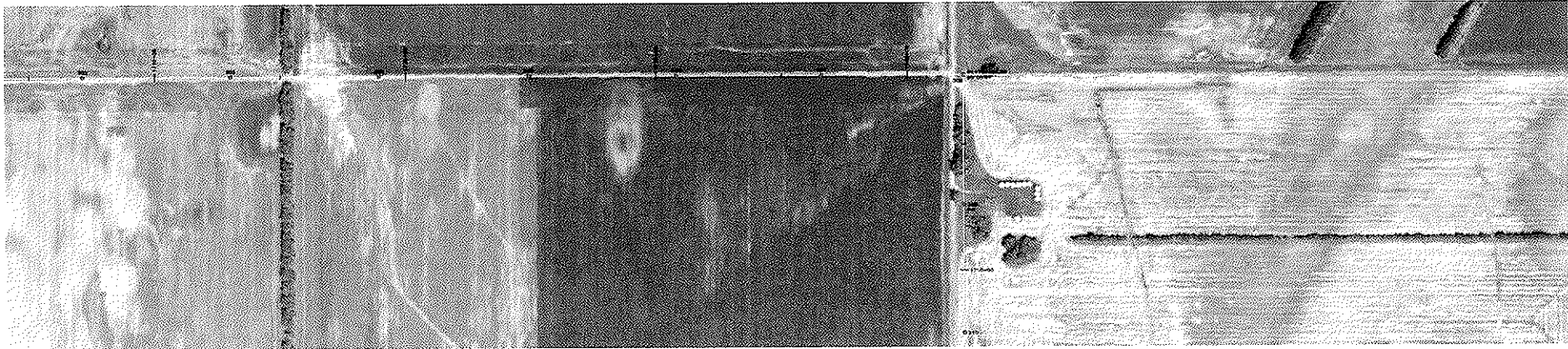
MINNKOTA POWER COOPERATIVE
 GRAND FORKS, ND

400.0 FT. → HORIZ. SCALE
 60.0 FT. → VERT. SCALE

↑ NORTH

WIND GENERATION TIE

38 OF 73



DESIGN CONDITIONS
 6.45% SLOPE 24 FEET
 20% RTO @ 20 DEGREES F INITIAL 20% RTO @ 20 DEGREES F INITIAL
 CLEARANCE LINE 30'

REV	DATE	DESCRIPTION	BY
0	05/05/11	REVISED FOR CONSTRUCTION	TVP
1	05/05/11	ISSUED FOR CONSTRUCTION	OFF

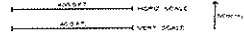


Stanley Consultants Inc.
 A STANLEY GROUP COMPANY
 ENGINEERING ENVIRONMENTAL AND
 CONSTRUCTION SERVICES - WORLDWIDE

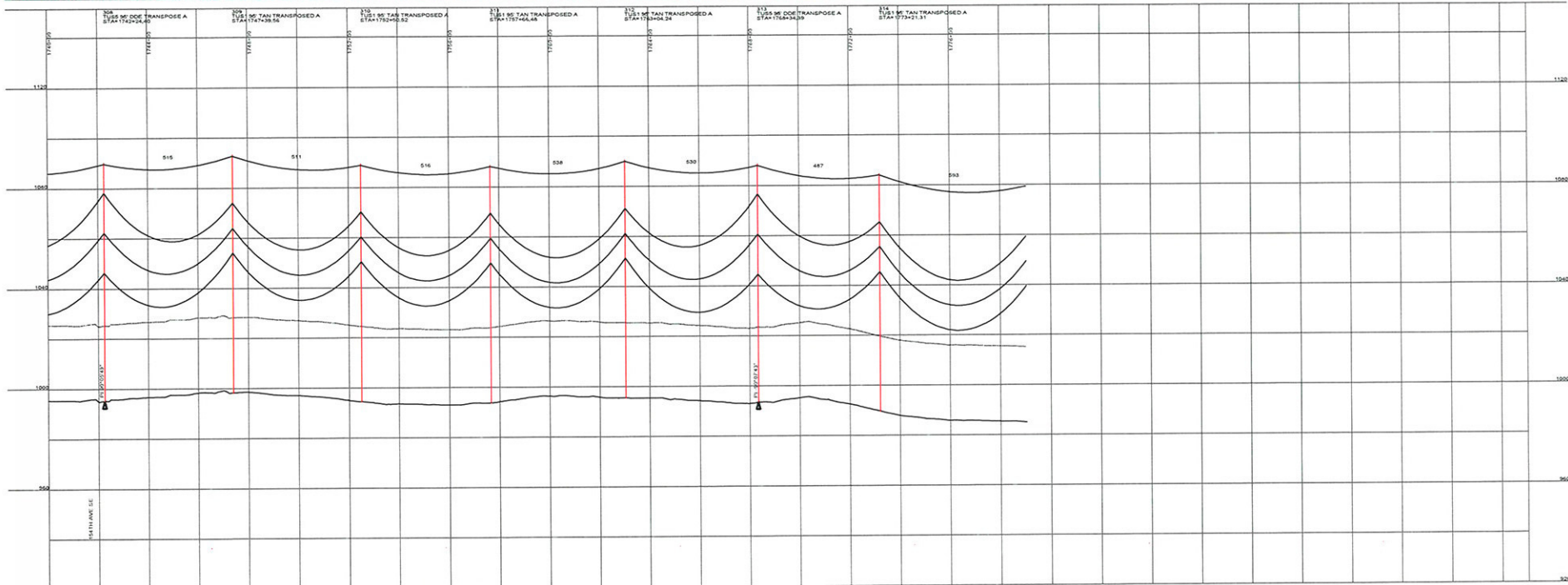
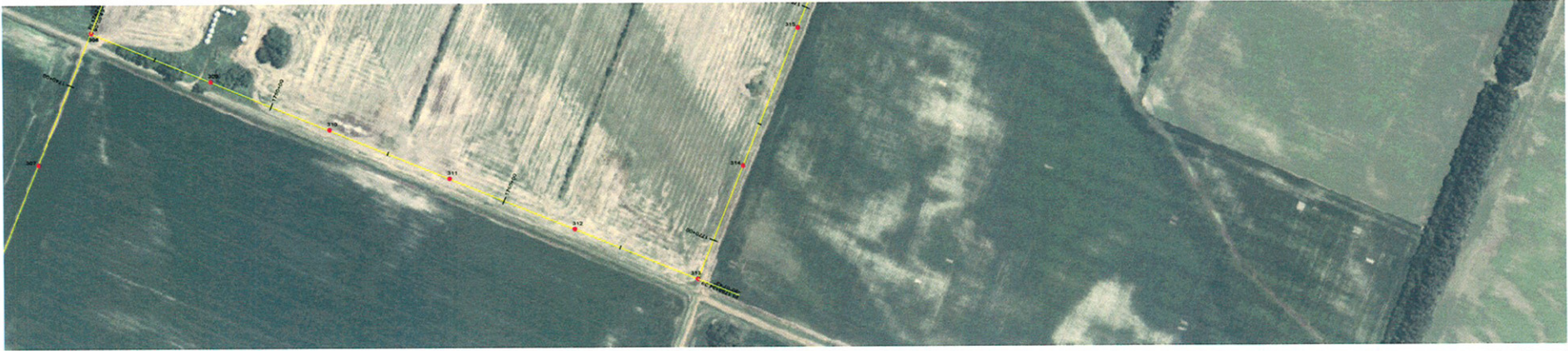
9200 E. EMERALD AVE.
 SUITE 400
 ENGLEWOOD, CO 80117

DESIGNED T. FRANCIS
 DRAWN T. FRANCIS
 CHECKED J. HILLBROUGH
 APPROVED M. BURMEYER
 DATE 05/05/11

MINNKOTA POWER COOPERATIVE
GRAND FORKS, ND



WIND GENERATION TIE **39 OF 73**



DESIGN CONDITIONS
 3-455' ODDW: 24 FIBER
 20% RTS @ -20 DEGREES F. INITIAL
 CLEARANCE LINE 30'

1272 ACER 45/7 "BITTERN"
 20% RTS @ -20 DEGREES F. INITIAL

REV	DATE	APP	DESCRIPTION	TMF	DFTK
0	06/06/08	MFJ	ISSUED FOR CONSTRUCTION		

Stanley Consultants INC.

9200 E. MINERAL AVE.
 SUITE 400
 ENGLEWOOD, CO 80112

A STANLEY GROUP COMPANY
 ENGINEERING, ENVIRONMENTAL AND
 CONSTRUCTION SERVICES - WORLDWIDE

DESIGNED T. FRANCIS
 DRAWN T. FRANCIS
 CHECKED H. DILLABOUGH
 APPROVED M. JURGEMEYER
 APPROVED _____
 DATE 06/06/08

MINNKOTA POWER COOPERATIVE
GRAND FORKS, ND

400.0 FT. HORIZ. SCALE
 40.0 FT. VERT. SCALE

WIND GENERATION TIE 40 OF 73