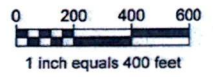


Blumberg No. 5119
EXHIBIT
5



GUNKEL TOWNSHIP
 T142N - R51W
 S1/2 - SECTION 34
 RUSH RIVER TOWNSHIP
 T141N - R51W
 E1/2 - SECTION 3

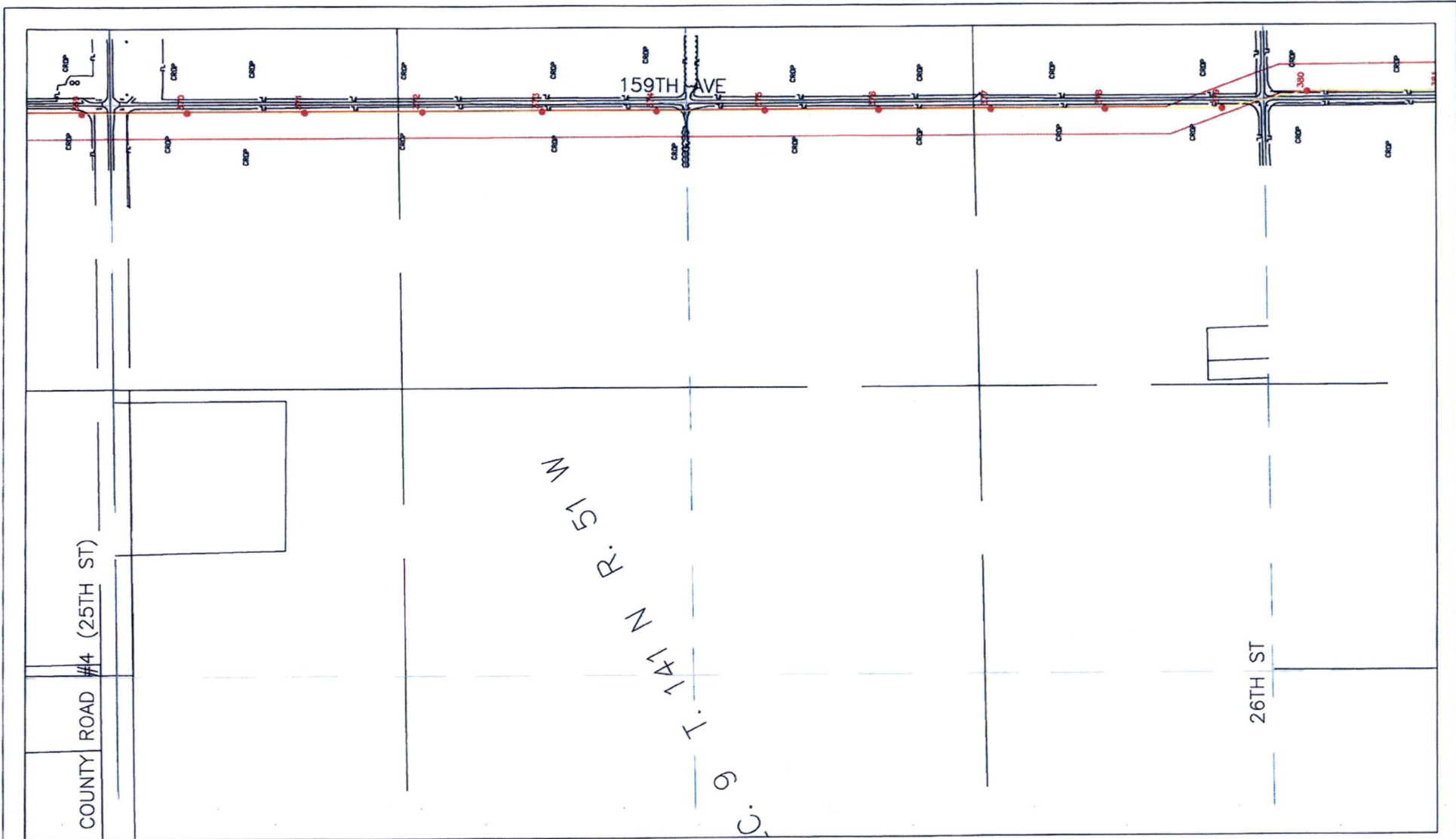


SHEET 37

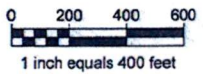
The compilation of data on this drawing is from:
 Stanley Consultants, Inc.
 Kadrmas, Lee & Jackson
 KBM, Inc.
 HDR, Inc.

Minnkota Power
 COOPERATIVE, INC.
Your Touchstone Energy® Partner

DATE: 06/30/08



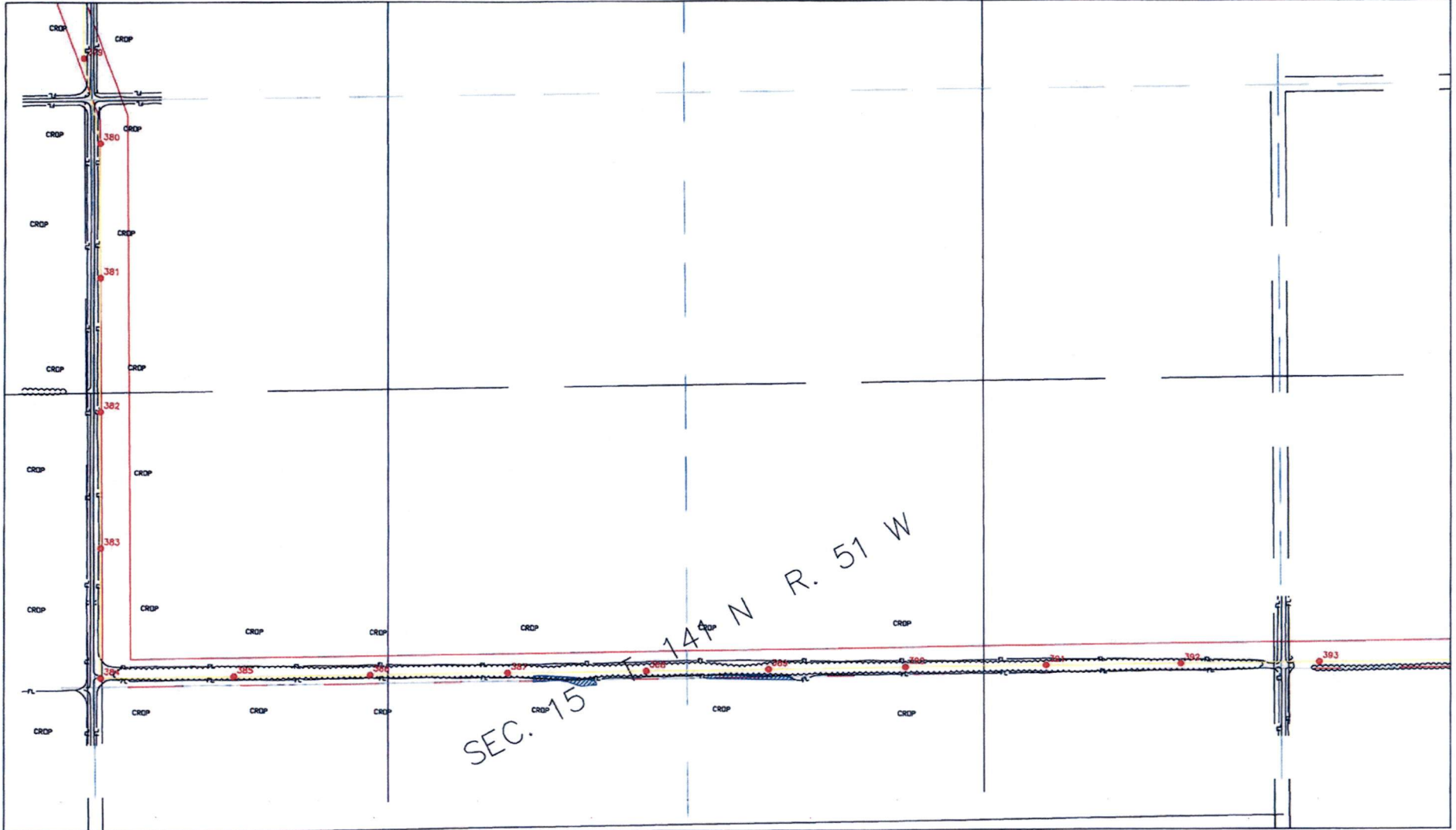
GUNKEL TOWNSHIP
 T142N - R51W
 S1/2 - SECTION 34
 RUSH RIVER TOWNSHIP
 T141N - R51W
 E1/2 - SECTION 3



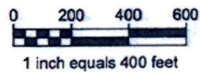
SHEET 38

The compilation of data on this drawing is from:
 Stanley Consultants, Inc.
 Kadmas, Lee & Jackson
 KBM, Inc.
 HDR, Inc.

Minnkota Power
 COOPERATIVE, INC.
 Your Touchstone Energy® Partner
 DATE: 06/30/08



GUNKEL TOWNSHIP
 T142N - R51W
 S1/2 - SECTION 34
 RUSH RIVER TOWNSHIP
 T141N - R51W
 E1/2 - SECTION 3

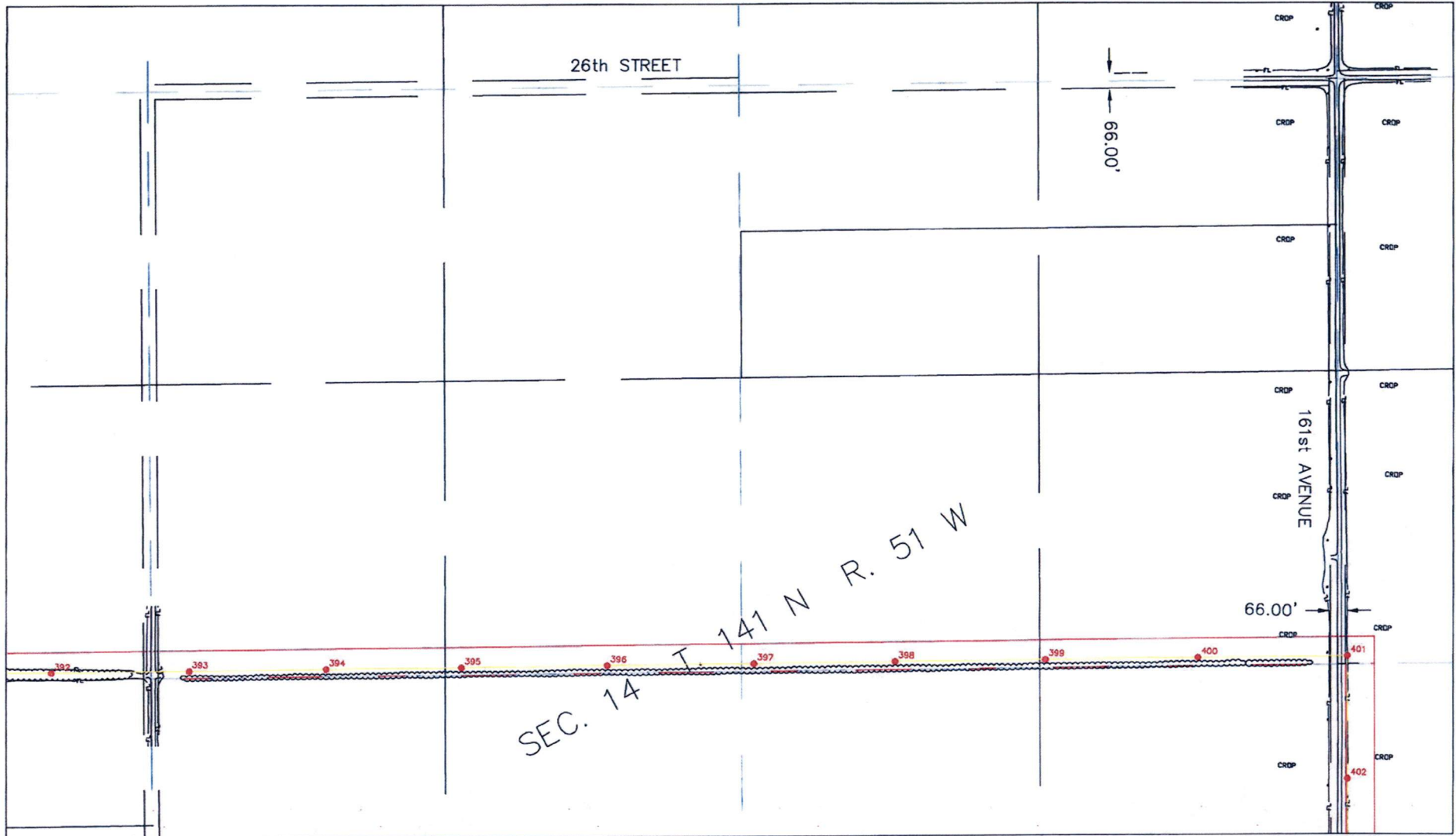


SHEET 39

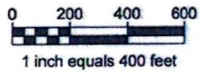
The compilation of data on this drawing is from:
 Stanley Consultants, Inc.
 Kadrmas, Lee & Jackson
 KBM, Inc.
 HDR, Inc.

Minnkota Power
 COOPERATIVE, INC.
 Your Touchstone Energy® Partner

DATE: 06/30/08



GUNKEL TOWNSHIP
 T142N - R51W
 S1/2 - SECTION 34
 RUSH RIVER TOWNSHIP
 T141N - R51W
 E1/2 - SECTION 3



SHEET 40

The compilation of data on this drawing is from:
 Stanley Consultants, Inc.
 Kadmas, Lee & Jackson
 KBM, Inc.
 HDR, Inc.

Minnkota Power
 MFC COOPERATIVE, INC.
 Your Touchstone Energy® Partner
 DATE: 06/30/08