

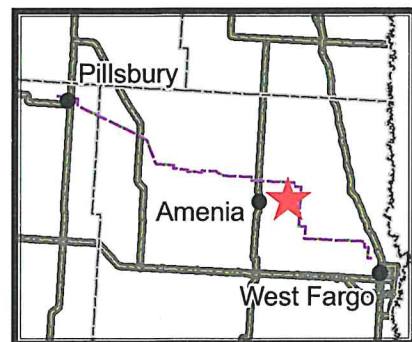
**Legend**

- - - Rush River Re-route Centerline (5/28/08)
- Survey Corridor (200 ft)
- - - Route Centerline (5/13/08)
- Survey Corridor (200 ft)
- Delineated Wetland

1:12,000  
 1 inch equals 1,000 feet  
 0 500 1,000 Feet



Basemap : 2005 NAIP Orthophoto, Cass County



9141051

10141051

1114

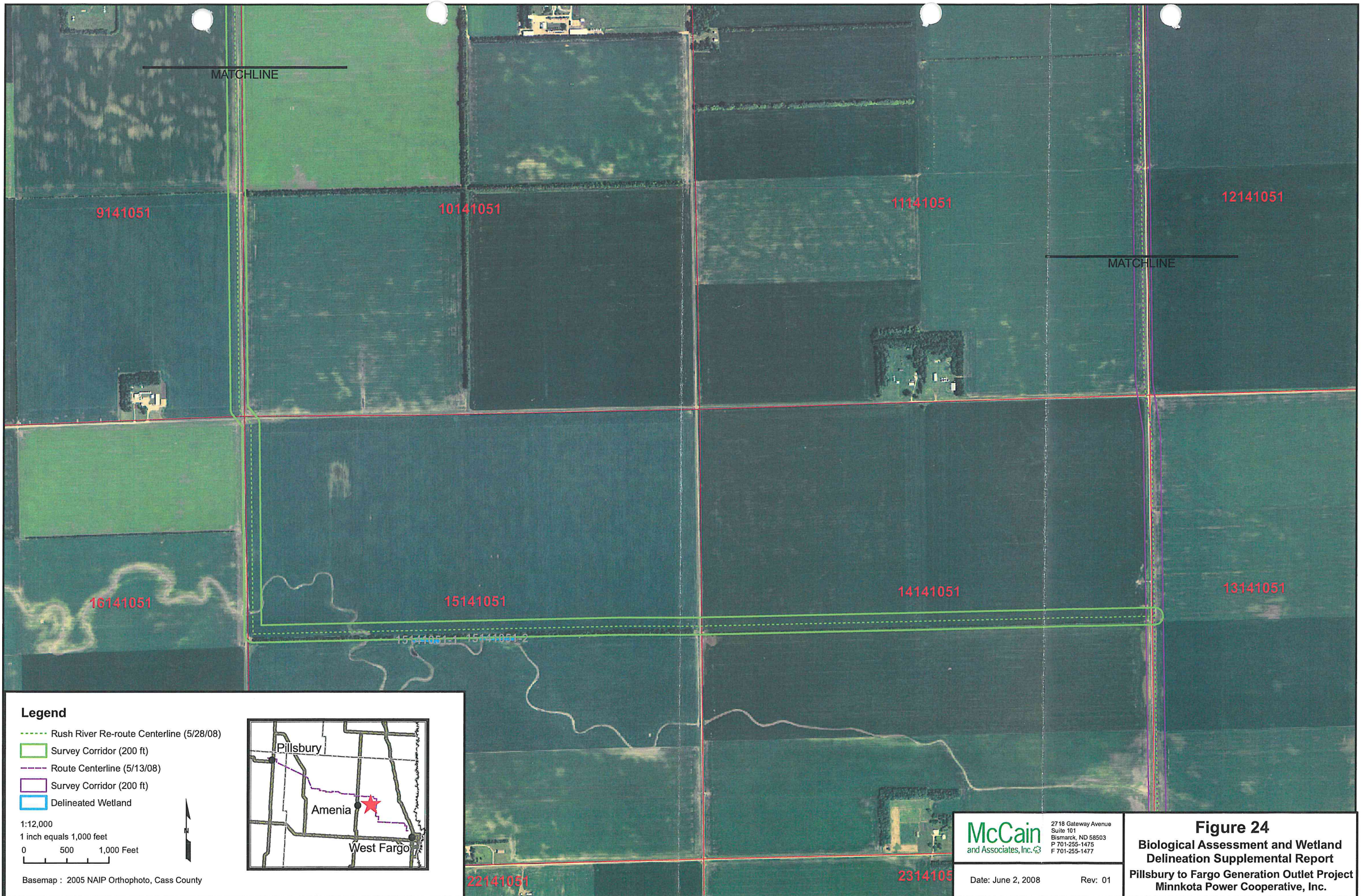
**McCain**  
 and Associates, Inc.

2718 Gateway Avenue  
 Suite 101  
 Bismarck, ND 58503  
 P 701-255-1475  
 F 701-255-1477

Date: June 2, 2008

Rev: 01

**Figure 23**  
**Biological Assessment and Wetland**  
**Delineation Supplemental Report**  
 Pillsbury to Fargo Generation Outlet Project  
 Minnkota Power Cooperative, Inc.



MATCHLINE

MATCHLINE

9141051

10141051

11141051

12141051

16141051

15141051

14141051

13141051

15141051-1 15141051-2

22141051

23141051

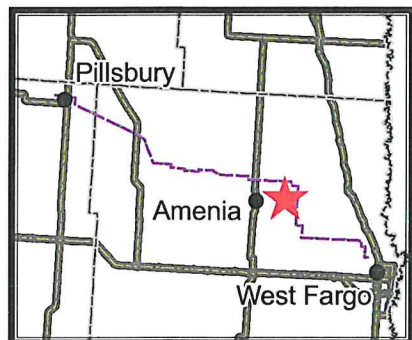
**Legend**

- - - - Rush River Re-route Centerline (5/28/08)
- Survey Corridor (200 ft)
- - - - Route Centerline (5/13/08)
- Survey Corridor (200 ft)
- Delineated Wetland

1:12,000  
1 inch equals 1,000 feet  
0 500 1,000 Feet



Basemap : 2005 NAIP Orthophoto, Cass County



**McCain**  
and Associates, Inc.

2718 Gateway Avenue  
Suite 101  
Bismarck, ND 58503  
P 701-255-1475  
F 701-255-1477

Date: June 2, 2008

Rev: 01

**Figure 24**

**Biological Assessment and Wetland  
Delineation Supplemental Report  
Pillsbury to Fargo Generation Outlet Project  
Minnkota Power Cooperative, Inc.**