

February 20, 2012

Darrell Nitschke
North Dakota Public Service Commission
600 East Boulevard, Dept. 408
Bismarck, ND 58505-0480

RECEIVED

FEB 23 2012

PUBLIC SERVICE COMMISSION

Re: 2011 Report Regarding Tree/Shrub Replacement Plan: (1) Survival Rate, Oct. 2011, Trees/Shrubs Planted 2009; (2) Survival Rate, Oct. 2011, Trees/Shrubs Planted 2010; (3) Trees/Shrubs Planted in 2011; (4) Remaining Trees/Shrubs to be Planted in 2012; and Exhibit 1

Case No. PU-08-48

Dear Mr. Nitschke:

With this letter, Minnkota Power Cooperative, Inc. submits for filing its *2011 Report Regarding Tree/Shrub Replacement Plan: (1) Survival Rate, Oct. 2011, Trees/Shrubs Planted 2009; (2) Survival Rate, Oct. 2011, Trees/Shrubs Planted 2010; (3) Trees/Shrubs Planted in 2011; (4) Remaining Trees/Shrubs to be Planted in 2012* for PU-08-48 Generation Outlet from Pillsbury to Fargo, North Dakota, with Exhibit 1 and an *Affidavit of Service*.

Should you have any questions with respect to this filing, please contact me.

Sincerely,



Gerad Paul
Senior Attorney
Minnkota Power Cooperative, Inc.
Phone: (701) 795-4209
gpaul@minnkota.com

STATE OF NORTH DAKOTA
BEFORE THE PUBLIC SERVICE COMMISSION
PU-08-48

REPORT REGARDING TREE/SHRUB REPLACEMENT PLAN:
SURVIVAL RATE, OCT. 2011, TREES/SHRUBS PLANTED 2009
SURVIVAL RATE, OCT. 2011, TREES/SHRUBS PLANTED 2010
TREES/SHRUBS PLANTED IN 2011
REMAINING TREES/SHRUBS TO BE PLANTED IN 2012

The Public Service Commission of North Dakota (the Commission) in its Findings of Fact, Conclusions of Law, and Order, attachment C-1 (Order) in PU08-48 directed that Minnkota Power Cooperative, Inc. (Minnkota) submit a Tree/Shrub Replacement Plan (Replacement Plan) for the replacement of the trees/shrubs along the generation outlet from Pillsbury, North Dakota to Fargo, North Dakota. Minnkota filed its Replacement Plan on July 14, 2009 and thereafter the Replacement Plan was approved by motion of the Commission on July 29, 2009.

The Commission's Order required that Minnkota replace each tree/shrub to be mitigated on a 2-for-1 basis. In its Replacement Plan, Minnkota indicated the total trees/shrubs to be replaced is 20,078.

The Order of the Commission also required that planted trees/shrubs be inspected once each year for three years to determine the survival rate of the trees/shrubs and to determine whether additional plantings of trees/shrubs are necessary based on the survival rate. The Order required Minnkota to submit a report regarding the condition of replacement planting. Minnkota filed a report on October 28, 2010 titled 2010 Report Regarding Tree/Shrub Replacement Plan (2010 Report). In October 2011, Minnkota provided information on the condition of the 2011 replacement planting to Wenck Associates, Inc., for purposes of completing a post-construction inspection report. Minnkota recently became aware that the post-construction inspection report

may not fulfill its reporting obligation under the Order, and therefore submits this 2011 Report Regarding Tree/Shrub Replacement Plan (2011 Report).

1. SURVIVAL RATE, OCT. 2011, TREES/SHRUBS PLANTED IN 2009 (TWO-YEAR INSPECTION)

In its first planting season of 2009, Minnkota arranged for and had planted 8,283 trees/shrubs as more fully described as to type and location in its Replacement Plan. In its 2010 Report, Minnkota identified the one-year survival rate of these plantings to be in excess of 90 percent (which is above the 75 percent survival rate sought in the Replacement Plan).

Minnkota hereby submits that, after a physical inspection of the 2009 planting trees/shrubs by Cass County Soil Conservation District conducted in 2011, it found the two-year survival rate to be in excess of 95 percent. Minnkota will report upon the three-year survival rate of these planting on or about October of 2012, as directed in the Commission's Order.

2. SURVIVAL RATE, OCT. 2011, TREES/SHRUBS PLANTED IN 2010 (ONE-YEAR INSPECTION)

In its Replacement Plan, Minnkota proposed a plan to plant 11,795 trees during the 2010 planting season. As indicated in the 2010 Report, because the plans of several farmers and several prospective tree planting areas changed, Minnkota arranged for and had planted 9,753 trees/shrubs in 2010.

Minnkota hereby submits that, after a physical inspection of the 2010 planting of 9,753 trees/shrubs by Cass County Soil Conservation District conducted in 2011, it found the one-year survival rate to be in excess of 95 percent, which is above the survival rate required in the Replacement Plan. Minnkota will report upon the two-year survival rate of these planting on or about October of 2012, as directed in the Commission's Order.

3. TREE/SHRUB PLANTING IN 2011

In its 2010 Report, Minnkota indicated a plan to plant 2,042 trees during the planting season of 2011. During the actual planting season of 2011, the wet planting conditions precluded all the planned trees/shrubs from being planted. Therefore, 1,360 trees/shrubs were planted in 2011 as set out on Exhibit 1 to this Report. Exhibit 1 indicates the location of the tree plantings, the farmer for whom the trees were planted, and the species of trees planted. The planting was completed in conjunction with the Cass County Soil Conservation District in Fargo. The tree types planted were agreed upon between Cass County Soil Conservation District, Minnkota, and the individual farmers, taking into account the Order of the Commission as to place and type. Minnkota will report upon the survival rate of these planting on or about October of 2012, as directed in the Commission's Order.

4. REMAINING TREES/SHRUBS TO BE PLANTED IN 2012

Of the 20,078 trees/shrubs, there remain for planting 682. Minnkota is in the process of working with Cass County Soil Conservation District in attempting to place those trees with eligible landowners in Cass/Barnes County generally along the line of the generation outlet from Pillsbury to Fargo. Minnkota will have the final plan for planting in place by early spring of 2012.

Minnkota Power Cooperative, Inc. asks the Public Service Commission accept this

2011 Report as to:

1. The survival rate in October 2011 of trees/shrubs planted in 2009;
2. The survival rate in October 2011 of trees/shrubs planted in 2010;
3. The type, location, and number of trees/shrubs planted in 2011, in the amount of 1,360; and

4. The plan for the remaining 682 trees/shrubs to be planted in 2012.

DATED this 20th day of February, 2012.

MINNKOTA POWER COOPERATIVE, INC.

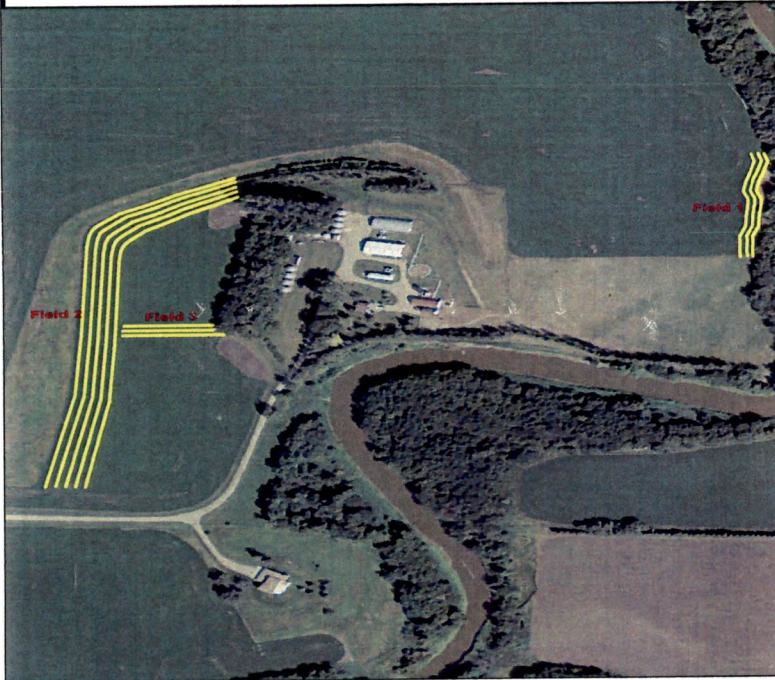
By 

Paul R. Mahlen
Property and Right-of-Way Manager
Minnkota Power Cooperative, Inc.
P.O. 13200
Grand Forks, ND 58208

2011
TREE AND SHRUB
PLANTING PLAN AND RECORD

Name Ken Pawluk Address 2808 28th Ave S Fargo 58103

Cell: (701) 238-1808
Phone: _____



NW 18 140 49
Quarter Sec Twp. Range
Planned by TP Planted by DI
Date 12/9/2010 Date 6/9/2011

Farmstead xxx Field _____ Wildlife _____
S/ Fallow _____ Replant _____

CRP xxx EQIP _____ LTA _____

Other (Indicate) _____

Between the row spacing 16'

Soil Type I479B Suitability Group 1
Soil Type I229A Suitability Group 4C
Soil Type _____ Suitability Group _____

Protected from Grazing Yes

Distance from road and/or Buildings 100'

Approved Yes (Yes or No) Date 8/19/2011

By: _____ Title: District Tech

Condition of site at time of planting Good
(Good, Fair, Poor)

Field No.	Planning Length	Planted Length	Planted Width (inc. 10' on each side of planting)	Acres	Row #	Row #1 is on North or West Side of Planting	Spacing in row	Number Planted Estimated	Number Planted (Actual)	Spraying and/or cultivating Plan and Record. (State how weed control is to be accomplished: Type of spray & rate and/or type of cult. equip. -- indicating when action to take place.)
						Species of tree or Shrub				
1	390		10	0.1	1	CBS / BHS	10	39		Fabric on all rows
	390		16	0.1	2	Willow, Flame	8	49		Minnkota will pay for Field
	390		26	0.2	3	Siouxland/Hybrid Poplar	10	39		1 Ken will pay for Fabric on Field 1 CRP will pay for the rest.
2	1240	1269	10	0.3	1	Siouxland/Hybrid Poplar	10	124	127	
	1240	1249	16	0.5	2	Am Linden/Hackberry	8	155	156	
	1240	1230	16	0.5	3	Willow, Flame	6	207	205	
	1240	1215	16	0.5	4	CBS / BHS	10	124	121	
	1240	1191	26	0.7	5	Pine, Ponderosa	12	103	99	2.5 Acres of CRP
3	205	248	10	0.0	1	Siouxland/Hybrid Poplar	10	21	25	6835 total feet of trees for CRP
	205	248	16	0.1	2	Willow, Flame	8	26	31	
	225	248	26	0.1	3	Pine, Ponderosa	10	23	25	
										Fabric was not applied due to death from water
Totals	8005	6898		2.5				908	914	

