

SEC. 12 T. 143 N R. 57 W

| REV | DATE | APP | DESCRIPTION | DFTR |
|-----|---------|-----|-------------|------|
| A | 4/23/08 | | PRELIMINARY | |



Stanley Consultants INC.

9200 E. MINERAL AVE.
SUITE 400
ENGLEWOOD, CO 80112

A STANLEY GROUP COMPANY
ENGINEERING, ENVIRONMENTAL AND
CONSTRUCTION SERVICES - WORLDWIDE

DESIGNED H. DILLABOUGH
DRAWN T. FRANCIS
CHECKED _____
APPROVED _____
DATE 4/23/08

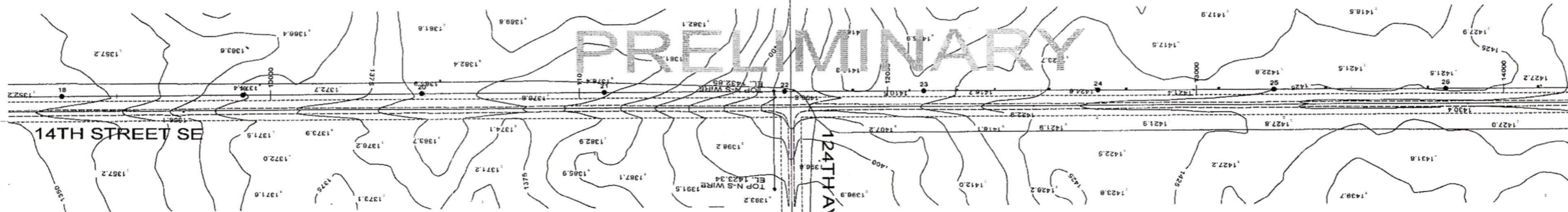


150.0 FT. HORIZ. SCALE



ASHTABULA WIND,
LLC 230KV LINE

PAGE 1/11



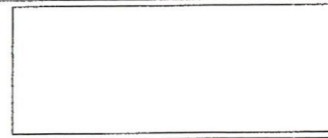
N R. 57 W

SEC. 10

| REV | DATE | APP | DESCRIPTION | DFTR |
|-----|---------|-----|-------------|------|
| A | 4/23/08 | | PRELIMINARY | |


 9200 E. MINERAL AVE.
 SUITE 400
 ENGLEWOOD, CO 80112
Stanley Consultants INC.
 A STANLEY GROUP COMPANY
 ENGINEERING, ENVIRONMENTAL AND
 CONSTRUCTION SERVICES - WORLDWIDE

DESIGNED H. DILLABOUGH
 DRAWN T. FRANCIS
 CHECKED _____
 APPROVED _____
 APPROVED _____
 DATE 4/23/08

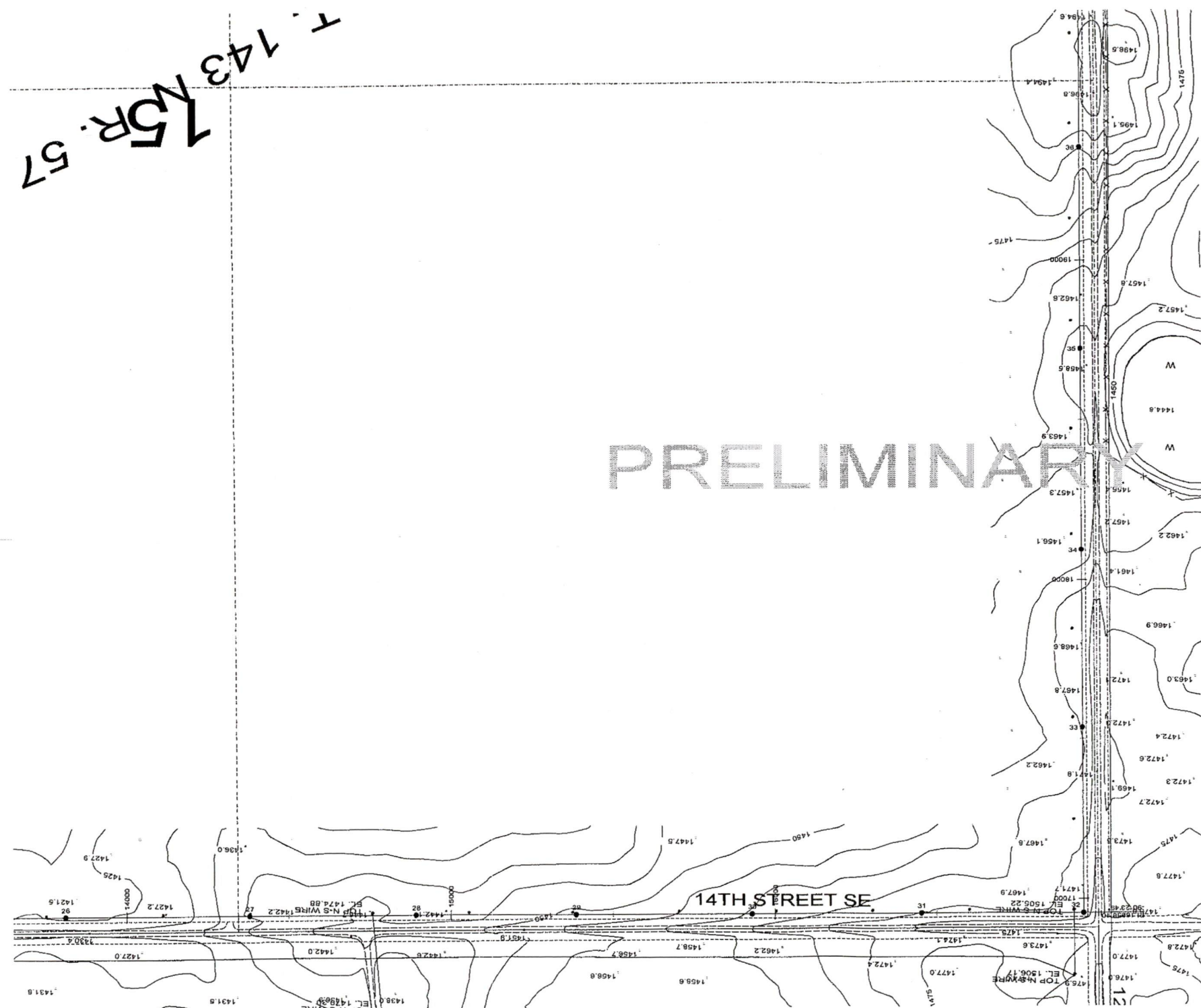


150.0 FT. HORIZ. SCALE
 NORTH
**ASHTABULA WIND,
 LLC 230KV LINE**
 PAGE 3/11

T. 143 NR. 57

PRELIMINARY

SEC. 16 T. 143 N I



| REV | DATE | APP | DESCRIPTION | DFTR |
|-----|---------|-----|-------------|------|
| A | 4/23/08 | | PRELIMINARY | |



9200 E. MINERAL AVE.
SUITE 400
ENGLEWOOD, CO 80112

Stanley Consultants INC. A STANLEY GROUP COMPANY
ENGINEERING, ENVIRONMENTAL AND
CONSTRUCTION SERVICES - WORLDWIDE

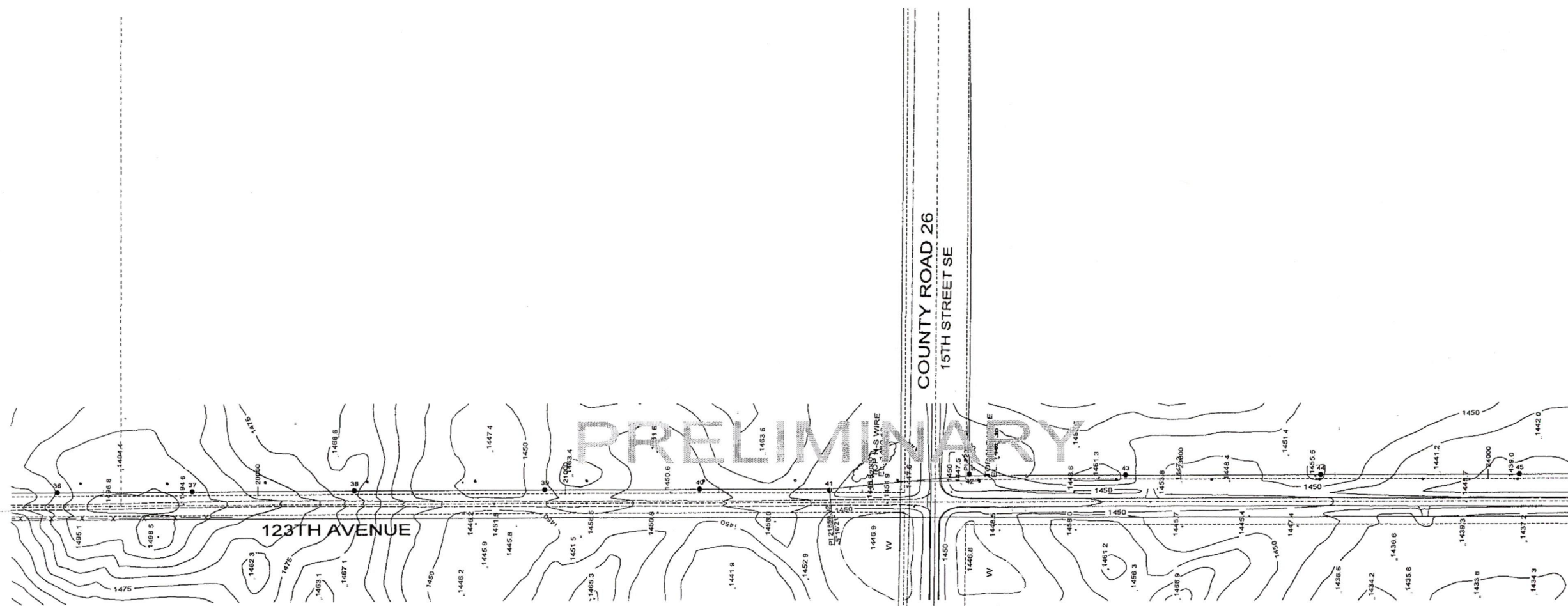
DESIGNED H. DILLABOUGH
DRAWN T. FRANCIS
CHECKED _____
APPROVED _____
APPROVED _____
DATE 4/23/08



150.0 FT. HORIZ. SCALE



ASHTABULA WIND,
LLC 230KV LINE



143 N R. 57 W

SEC. 21

| REV | DATE | APP | DESCRIPTION | DFTR |
|-----|---------|-----|-------------|------|
| A | 4/23/08 | | PRELIMINARY | |



9200 E. MINERAL AVE.
SUITE 400
ENGLEWOOD, CO 80112

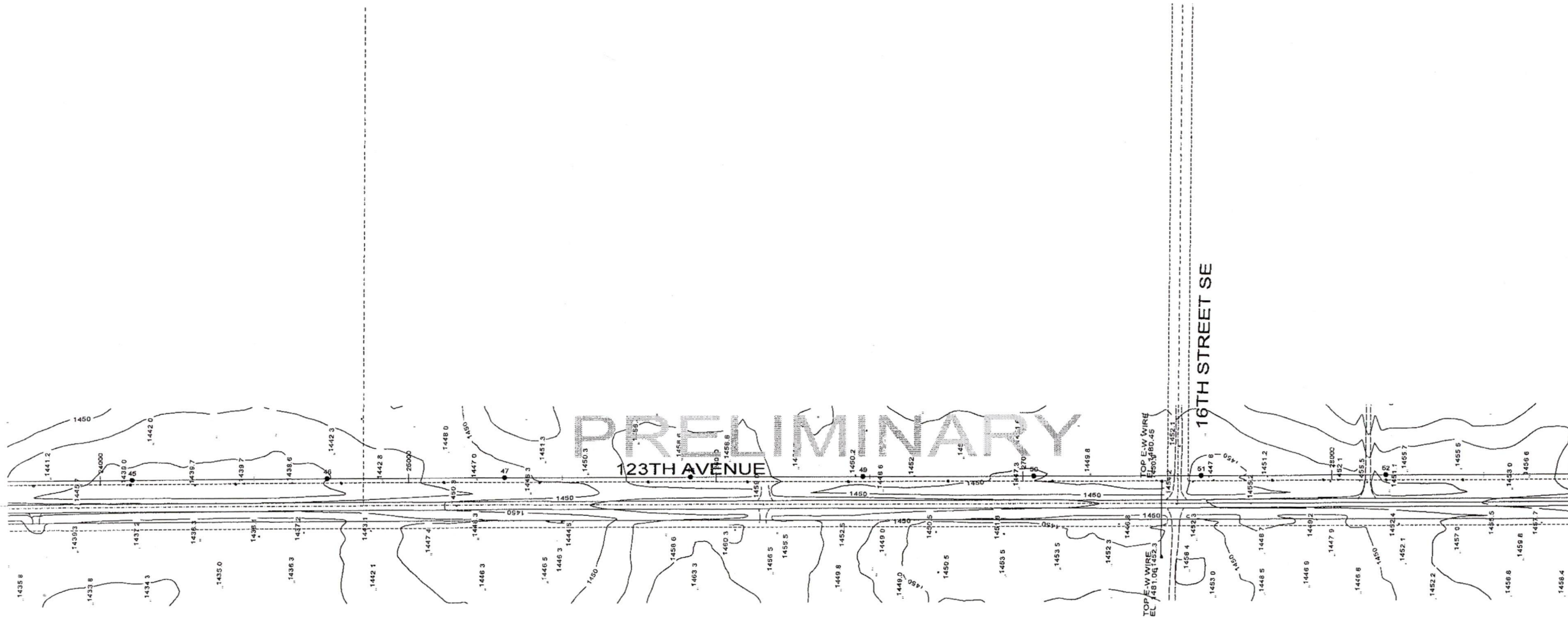
Stanley Consultants INC. A STANLEY GROUP COMPANY
ENGINEERING, ENVIRONMENTAL AND
CONSTRUCTION SERVICES - WORLDWIDE

DESIGNED H. DILLABOUGH
DRAWN T. FRANCIS
CHECKED _____
APPROVED _____
APPROVED _____
DATE 4/23/08

150.0 FT. HORIZ. SCALE




ASHTABULA WIND,
LLC 230KV LINE

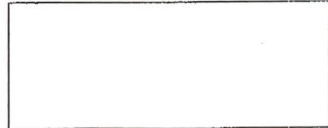


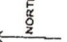
SEC. 21 T. 143 N R. 57 W

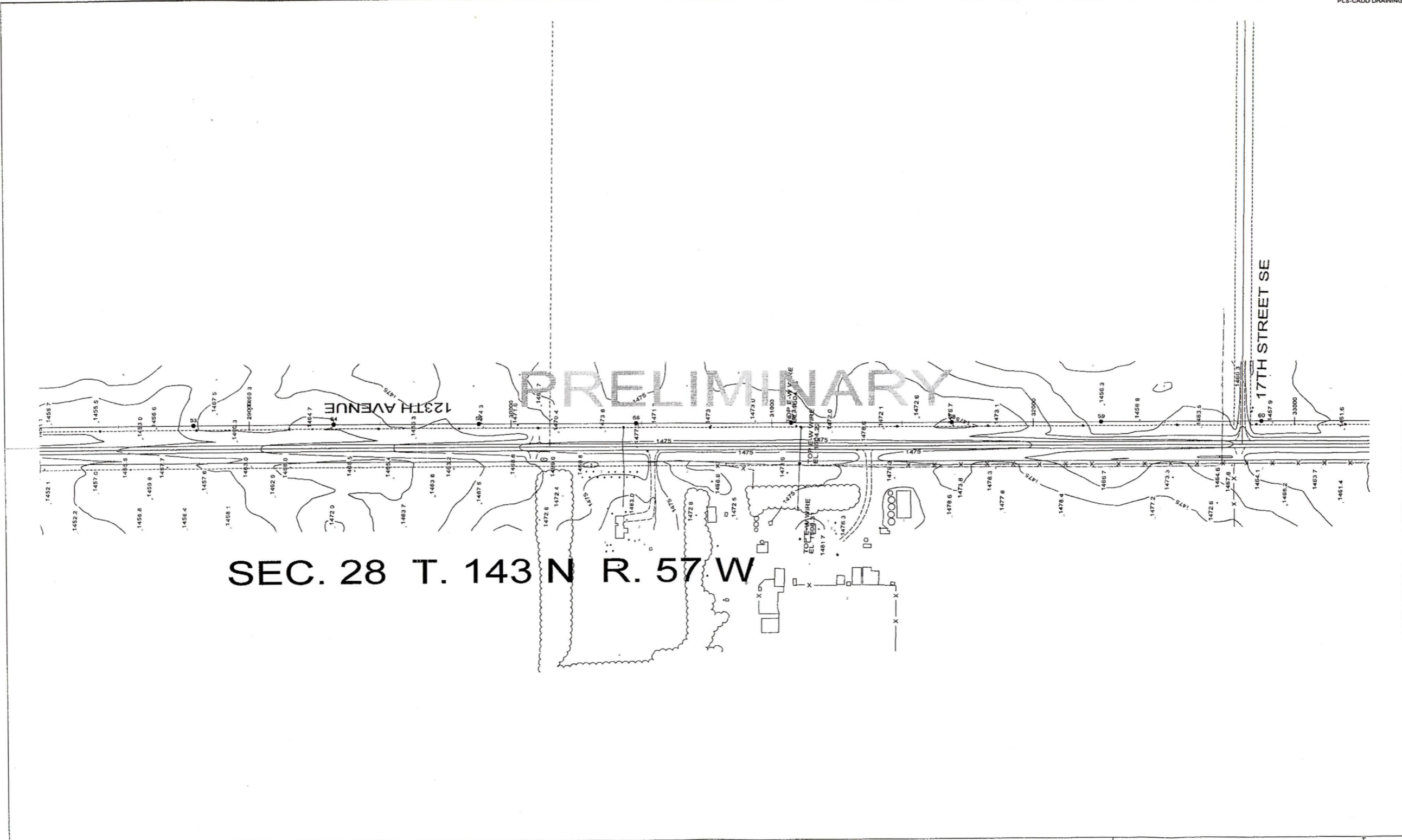
| REV | DATE | APP | DESCRIPTION | DFTR |
|-----|---------|-----|-------------|------|
| A | 4/23/08 | | PRELIMINARY | |


Stanley Consultants INC.
 9200 E. MINERAL AVE.
 SUITE 400
 ENGLEWOOD, CO 80112
 A STANLEY GROUP COMPANY
 ENGINEERING, ENVIRONMENTAL AND
 CONSTRUCTION SERVICES - WORLDWIDE

DESIGNED H. DILLABOUGH
 DRAWN T. FRANCIS
 CHECKED _____
 APPROVED _____
 DATE 4/23/08




150.0 FT. HORIZ. SCALE

ASHTABULA WIND, LLC 230KV LINE
 PAGE 6/11

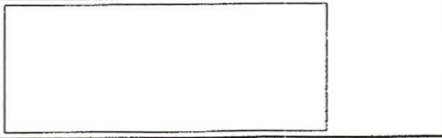


SEC. 28 T. 143 N R. 57 W

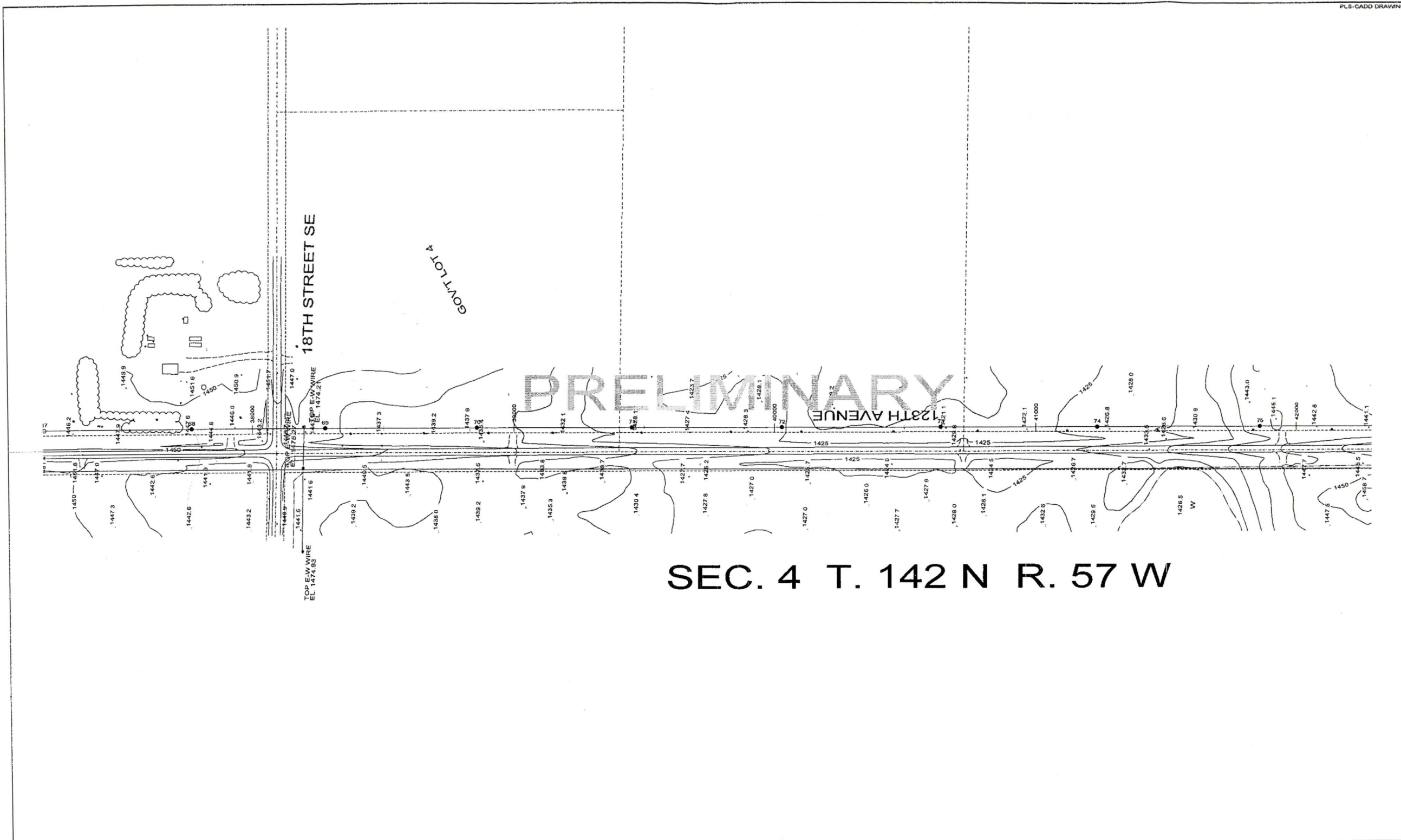
| REV | DATE | APP | DESCRIPTION | DFTR |
|-----|---------|-----|-------------|------|
| A | 4/23/08 | | PRELIMINARY | |


 9200 E. MINERAL AVE.
 SUITE 400
 ENGLEWOOD, CO 80112
Stanley Consultants INC. A STANLEY GROUP COMPANY
 ENGINEERING, ENVIRONMENTAL AND
 CONSTRUCTION SERVICES - WORLDWIDE

DESIGNED H. DILLABOUGH
 DRAWN T. FRANCIS
 CHECKED _____
 APPROVED _____
 APPROVED _____
 DATE 4/23/08



150.0 FT. HORIZ. SCALE
 NORTH
ASHTABULA WIND, LLC 230KV LINE
 PAGE 7/11



SEC. 4 T. 142 N R. 57 W

| REV | DATE | APP | DESCRIPTION | DFTR |
|-----|---------|-----|-------------|------|
| A | 4/23/08 | | PRELIMINARY | |



Stanley Consultants INC.

8200 E. MINERAL AVE.
SUITE 400
ENGLEWOOD, CO 80112

A STANLEY GROUP COMPANY
ENGINEERING, ENVIRONMENTAL AND
CONSTRUCTION SERVICES - WORLDWIDE

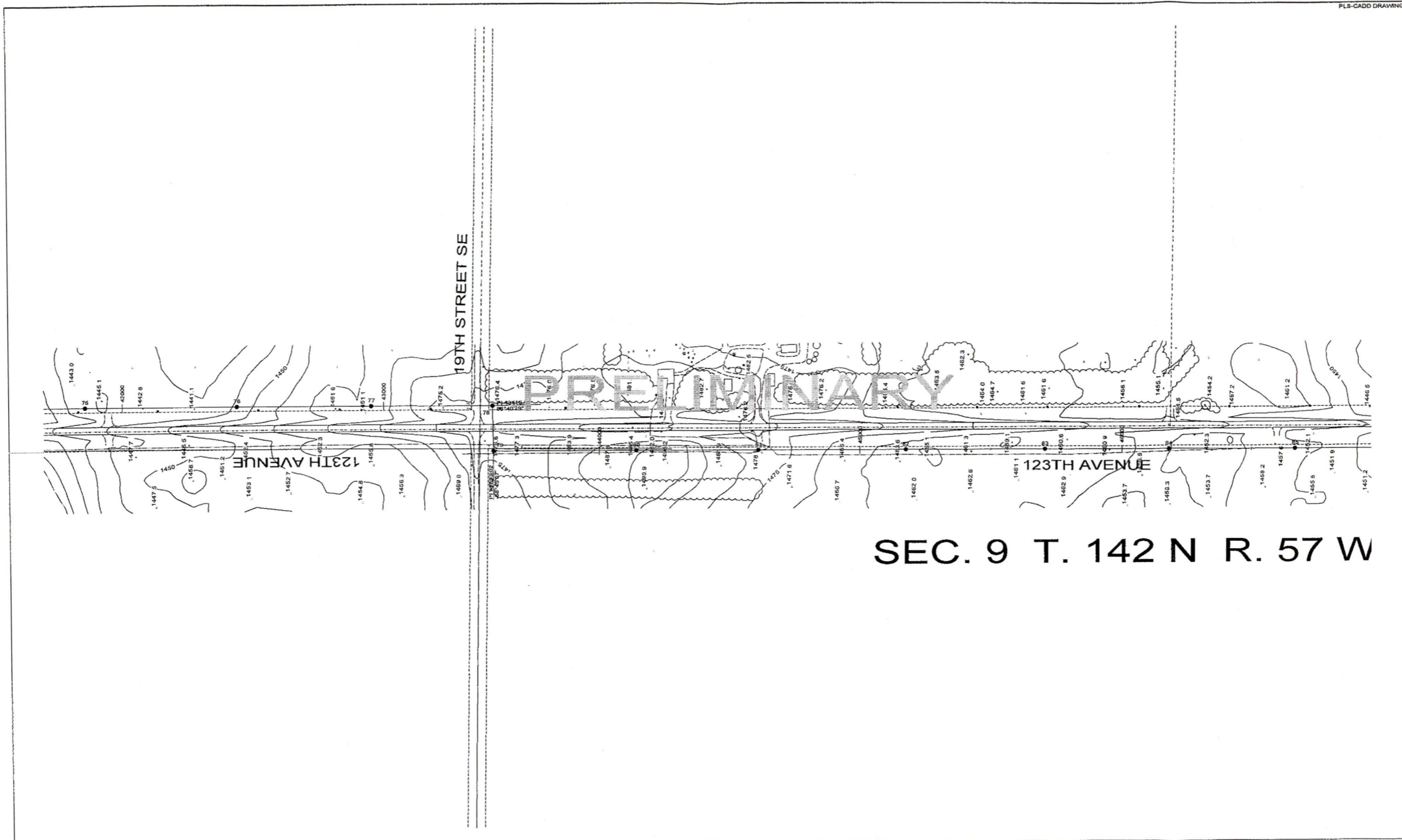
DESIGNED H. DILLABOUGH
DRAWN T. FRANCIS
CHECKED _____
APPROVED _____
DATE 4/23/08



150.0 FT. HORIZ. SCALE



ASHTABULA WIND,
LLC 230KV LINE



SEC. 9 T. 142 N R. 57 W

| REV | DATE | APP | DESCRIPTION | DFTR |
|-----|---------|-----|-------------|------|
| A | 4/23/08 | | PRELIMINARY | |



Stanley Consultants INC.

9200 E. MINERAL AVE.
SUITE 400
ENGLEWOOD, CO 80112

A STANLEY GROUP COMPANY
ENGINEERING, ENVIRONMENTAL AND
CONSTRUCTION SERVICES - WORLDWIDE

DESIGNED H. DILLABOUGH
DRAWN T. FRANCIS
CHECKED _____
APPROVED _____
DATE 4/23/08



100.0 FT. HORIZ. SCALE



ASHTABULA WIND,
LLC 230KV LINE



| REV | DATE | APP | DESCRIPTION | DFTR |
|-----|---------|-----|-------------|------|
| A | 4/23/08 | | PRELIMINARY | |



Stanley Consultants INC.

9200 E. MINERAL AVE.
SUITE 400
ENGLEWOOD, CO 80112

A STANLEY GROUP COMPANY
ENGINEERING, ENVIRONMENTAL AND
CONSTRUCTION SERVICES - WORLDWIDE

DESIGNED H. DILLABOUGH
DRAWN T. FRANCIS
CHECKED _____
APPROVED _____
APPROVED _____
DATE 4/23/08

150.0 FT. HORIZ. SCALE



ASHTABULA WIND,
LLC 230KV LINE

PAGE 11/11