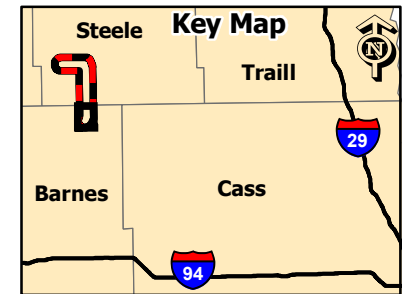


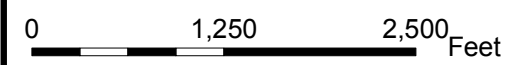
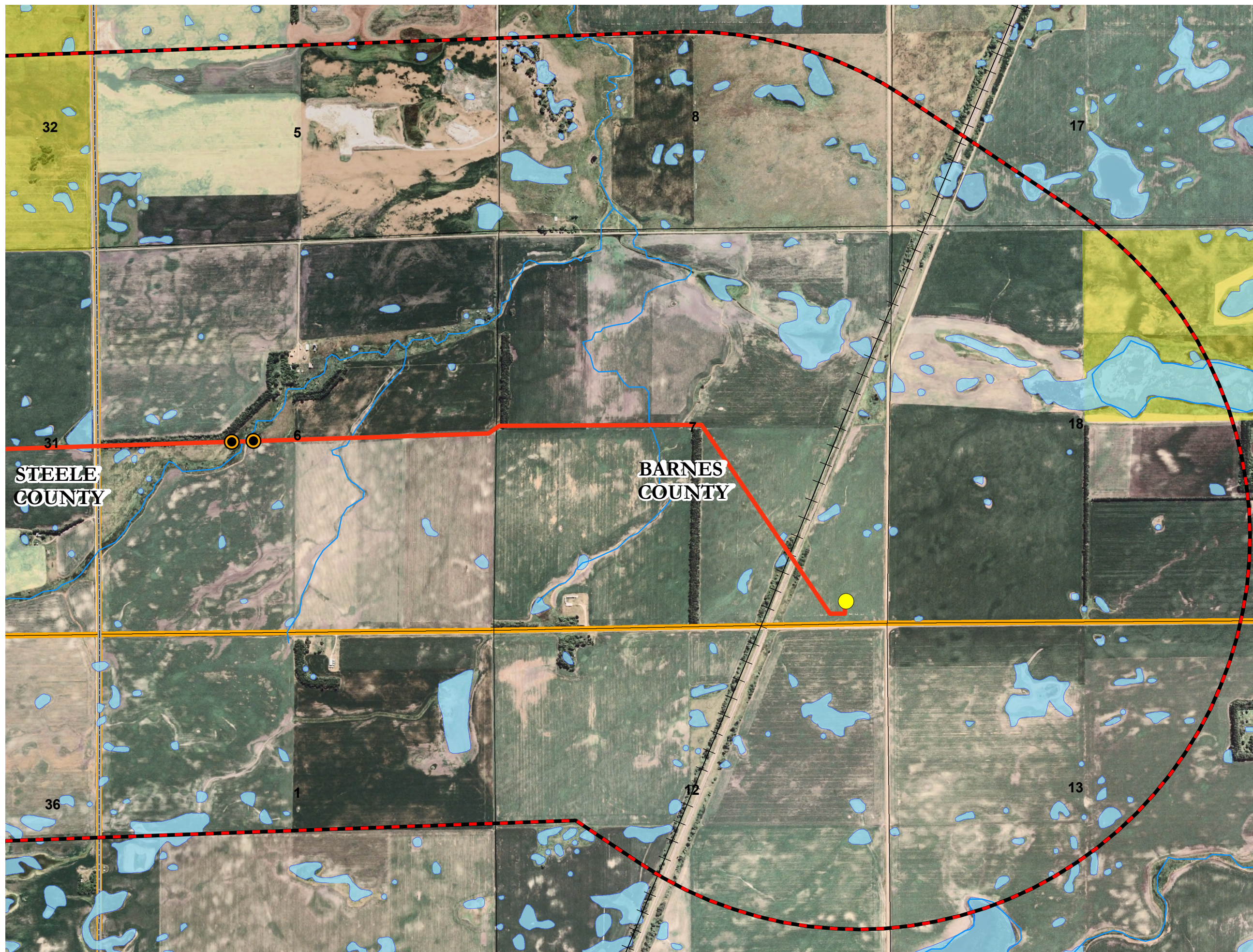
**Luverne Wind Farm
 Generation Outlet**

Proposed Aviation Ball Marker Locations
 Figure 12
 Sheet 1 of 5



Legend

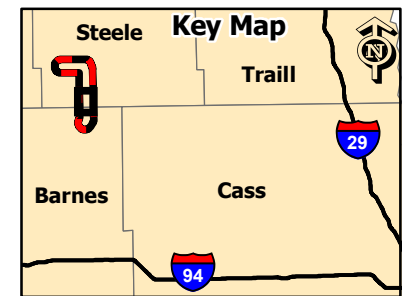
- Aviation Ball Markers
- Proposed Route
- Corridor Boundary
- Proposed Substation
- Surface Water
- Airstrips
- Railroad
- County Boundary
- NWI Wetlands
- USFWS Wetland Easement



Prepared By:
HDR
 May 2008

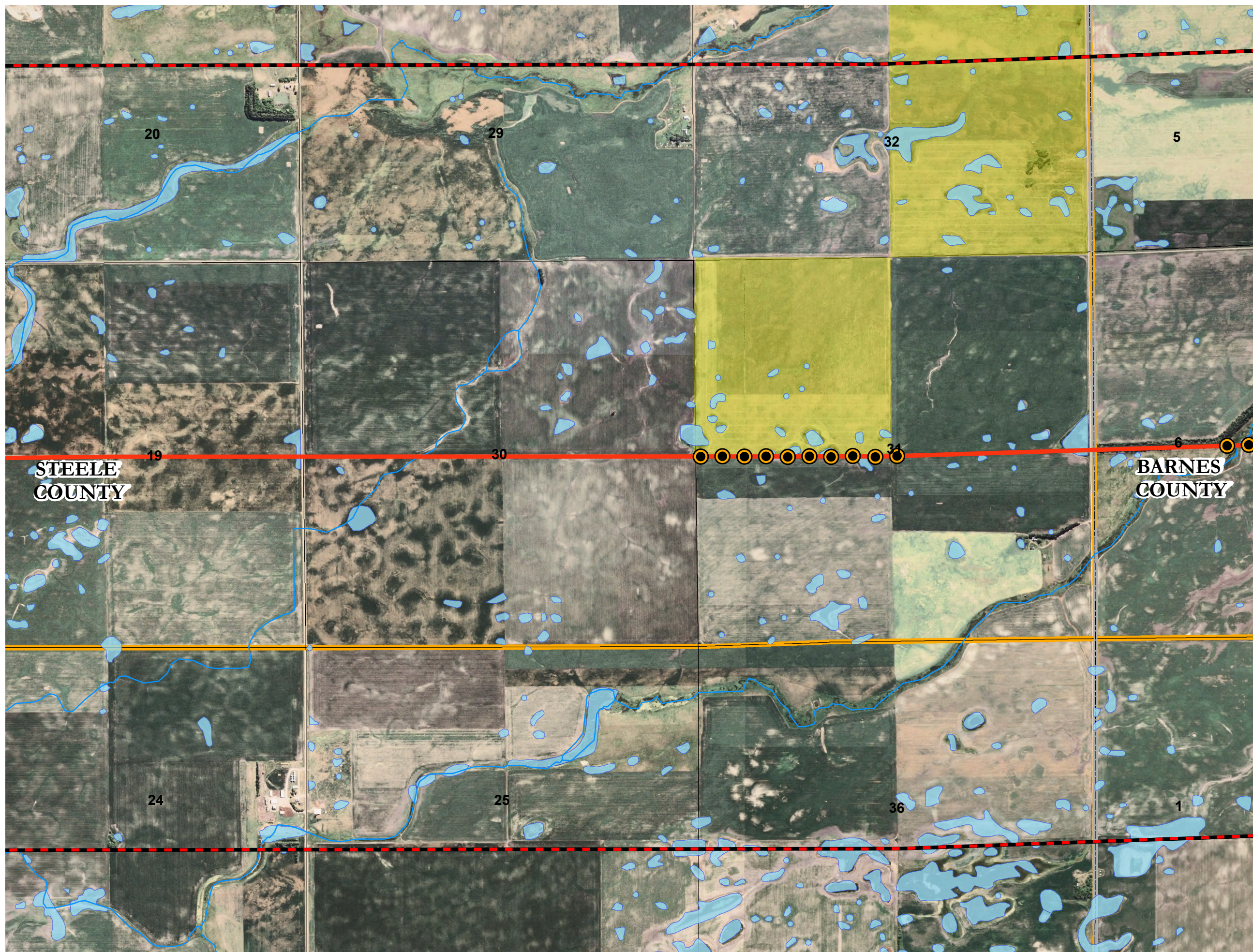
**Luverne Wind Farm
 Generation Outlet**

Proposed Aviation Ball Marker Locations
 Figure 12
 Sheet 2 of 5



Legend

- Aviation Ball Markers
- Proposed Route
- Corridor Boundary
- Proposed Substation
- Surface Water
- Airstrips
- Railroad
- County Boundary
- NWI Wetlands
- USFWS Wetland Easement

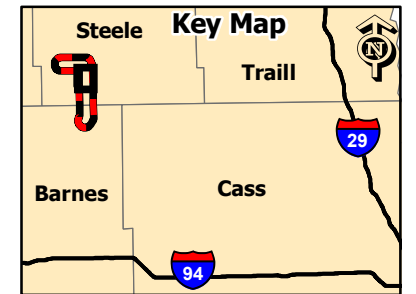


0 1,250 2,500 Feet

Prepared By:
HDR
 May 2008

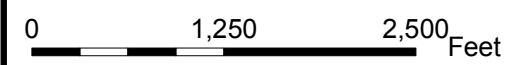
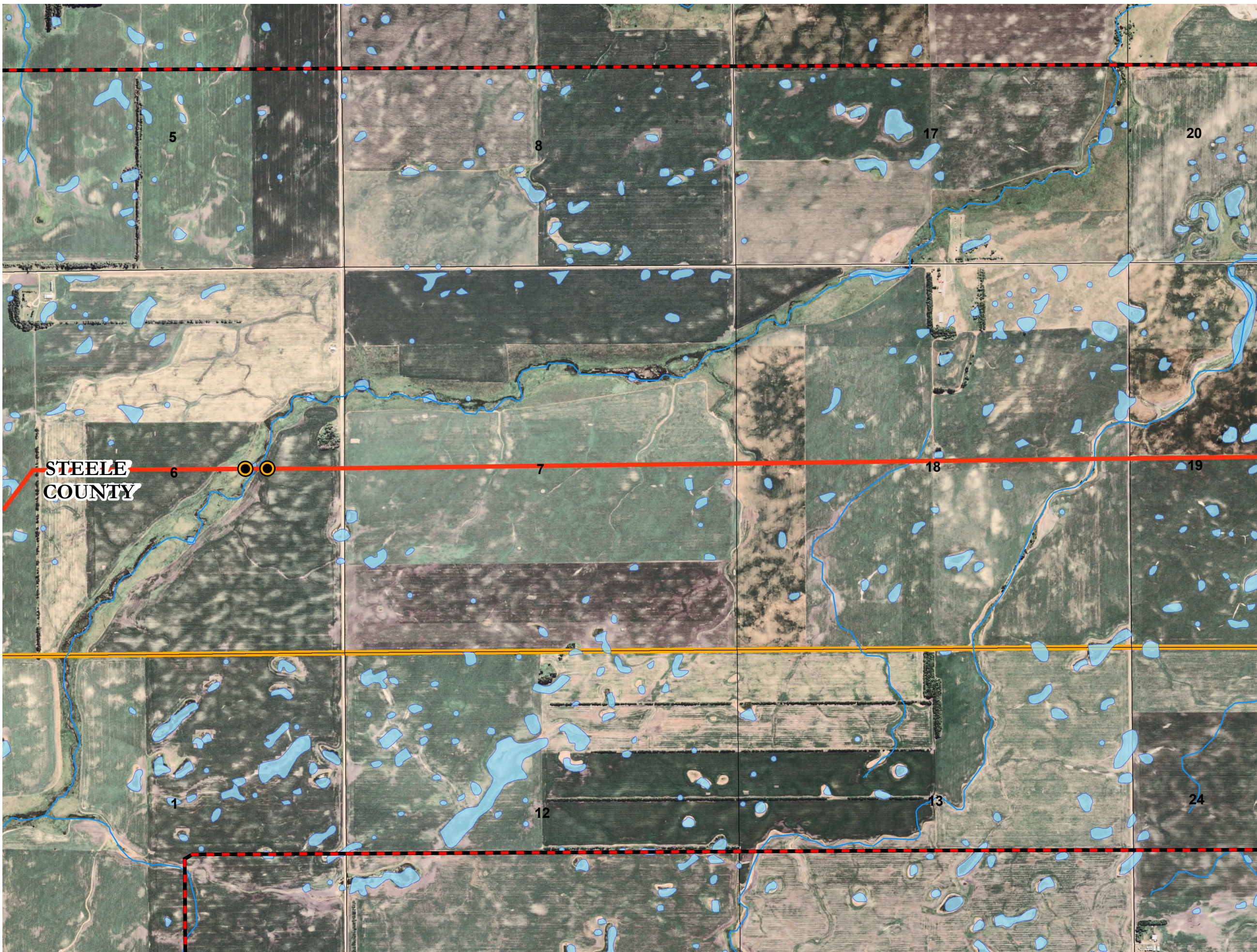
**Luverne Wind Farm
 Generation Outlet**

Proposed Aviation Ball Marker Locations
 Figure 12
 Sheet 3 of 5



Legend

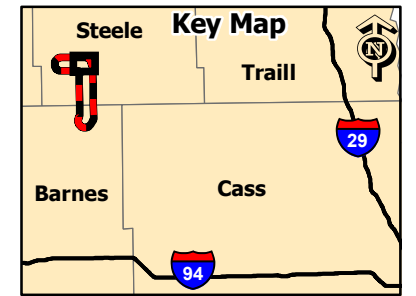
- Aviation Ball Markers
- Proposed Route
- Corridor Boundary
- Proposed Substation
- Surface Water
- Airstrips
- Railroad
- County Boundary
- NWI Wetlands
- USFWS Wetland Easement



Prepared By:
HDR
 May 2008

**Luverne Wind Farm
 Generation Outlet**

Proposed Aviation Ball Marker Locations
 Figure 12
 Sheet 4 of 5



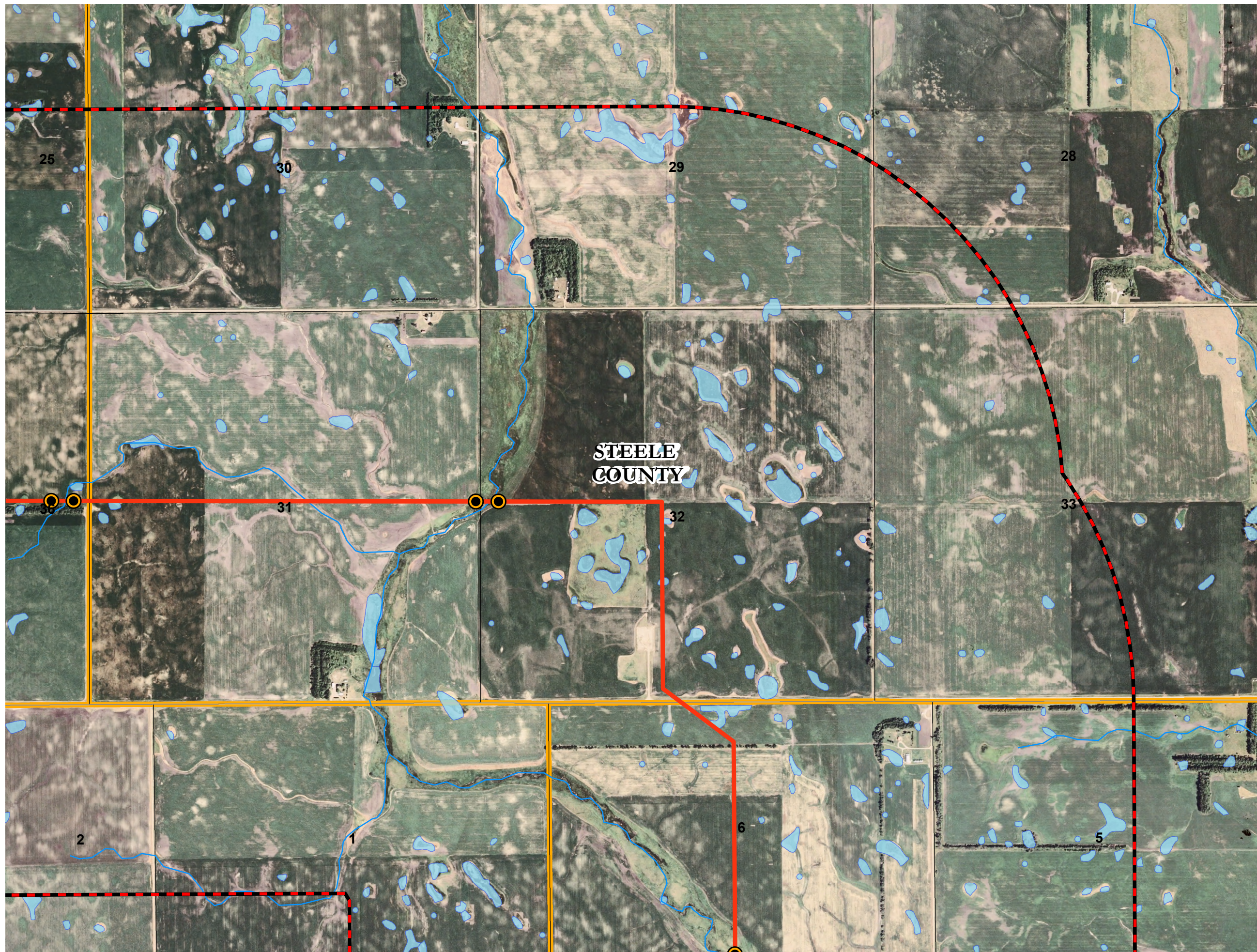
Legend

- Aviation Ball Markers
- Proposed Route
- Corridor Boundary
- Proposed Substation
- Surface Water
- Airstrips
- Railroad
- County Boundary
- NWI Wetlands
- USFWS Wetland Easement



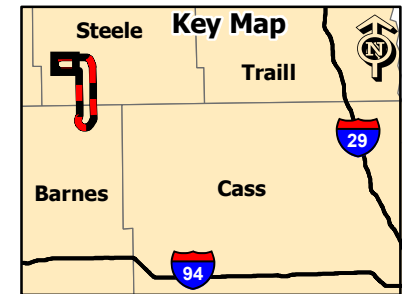
0 1,250 2,500 Feet

Prepared By:
HDR
 May 2008



**Luverne Wind Farm
 Generation Outlet**

Proposed Aviation Ball Marker Locations
 Figure 12
 Sheet 5 of 5



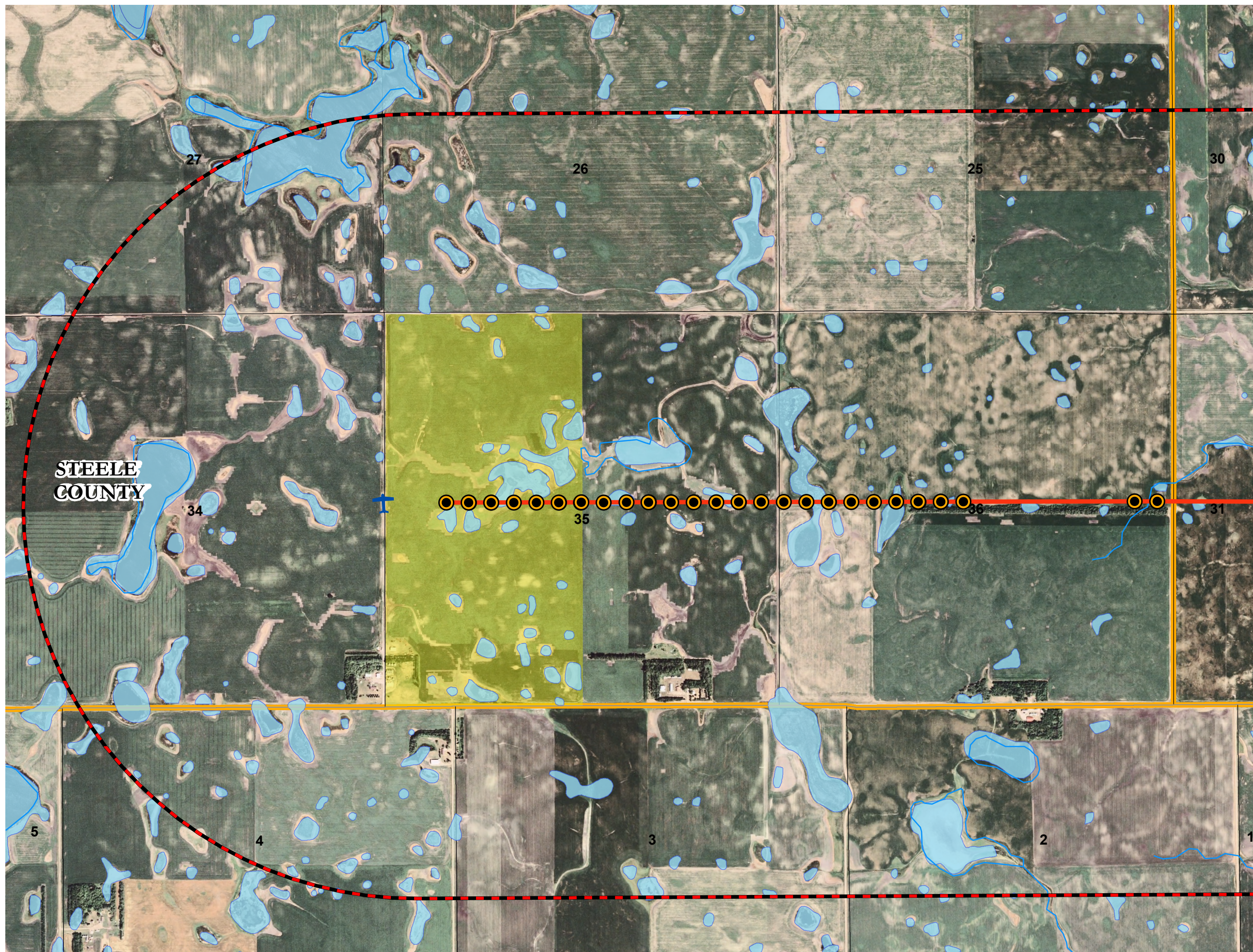
Legend

- Aviation Ball Markers
- Proposed Route
- Corridor Boundary
- Proposed Substation
- Surface Water
- Airstrips
- Railroad
- County Boundary
- NWI Wetlands
- USFWS Wetland Easement



0 1,250 2,500 Feet

Prepared By:
HDR
 May 2008



**STEELE
 COUNTY**