

RECEIVED

JAN 27 2009

PUBLIC SERVICE COMMISSION

Fredrikson
& BYRON, P.A.

January 27, 2009

Hand Delivered

Mr. Darrell Nitschke
Executive Secretary
North Dakota Public Service Commission
600 E. Boulevard, Dept. 408
Bismarck, ND 58505-0480

**RE: M-Power, LLC's Request for Approval of
Proposed Changes to Transmission Line
Near Pillsbury Substation
230 kV Electric Transmission Line –
Steele County – Siting Application
Docket No. PU-08-107**

Dear Mr. Nitschke:

On October 30, 2008, the North Dakota Public Service Commission ("Commission") issued Certificate of Compatibility for a Transmission Facility Corridor No. 106 and Route Permit for Construction of a Transmission Facility No. 116 for M-Power, LLC's ("M-Power") approximately 13 mile long 230 kV transmission line. Since the time that Certificate Nos. 106 and 116 were issued, M-Power has learned that changes to the transmission line route near the Pillsbury Substation are required. M-Power requests that the Commission approve the proposed changes, as detailed below.

Early in December 2008, M-Power was informed that the approach to the Pillsbury Substation outlined in its certificate of corridor compatibility and route permit applications was unacceptable to Minnkota Power Agency ("Minnkota"). As a result of many discussions and engineering research, M-Power and Minnkota have agreed to the proposed changes to the transmission line route near the Pillsbury Substation outlined in the enclosed Authorized Approach, dated January 22, 2009. (An original and ten copies, as well as a disk containing the same, are enclosed.) The proposed changes to the transmission line route are all on Minnkota property.

34 PU-08-107 Filed: 1/27/2009 Pages: 3
**Letter & Map Requesting Approval of Turbines 86 –
88 Location Changes**

M-Power, LLC

Fredrickson&Byron,PA - Lawrence Bender

Attorneys & Advisors
main 701.221.4020
fax 701.221.4040
www.fredlaw.com

Fredrikson & Byron, P.A.
200 North Third Street, Suite 150
Bismarck, North Dakota
58501-3879

The new approach is described as follows:

Structure #88 is a self-supporting 3-pole steel design. No tangent structure "89" is needed between structure #88 and Pillsbury Substation take-off frame.

Below are X and Y coordinates for structures 86 through 88. Coordinates are given for the middle pole, and spacing is 30ft between poles on all of the corner structures.

Structure#	X - Easting (ft)	Y - Northing (ft)
86	2631775.41	575664.299
87	2631198.54	575664.603
88	2631213.408	575151.134

If you have any questions, please do not hesitate to contact me.

Sincerely,

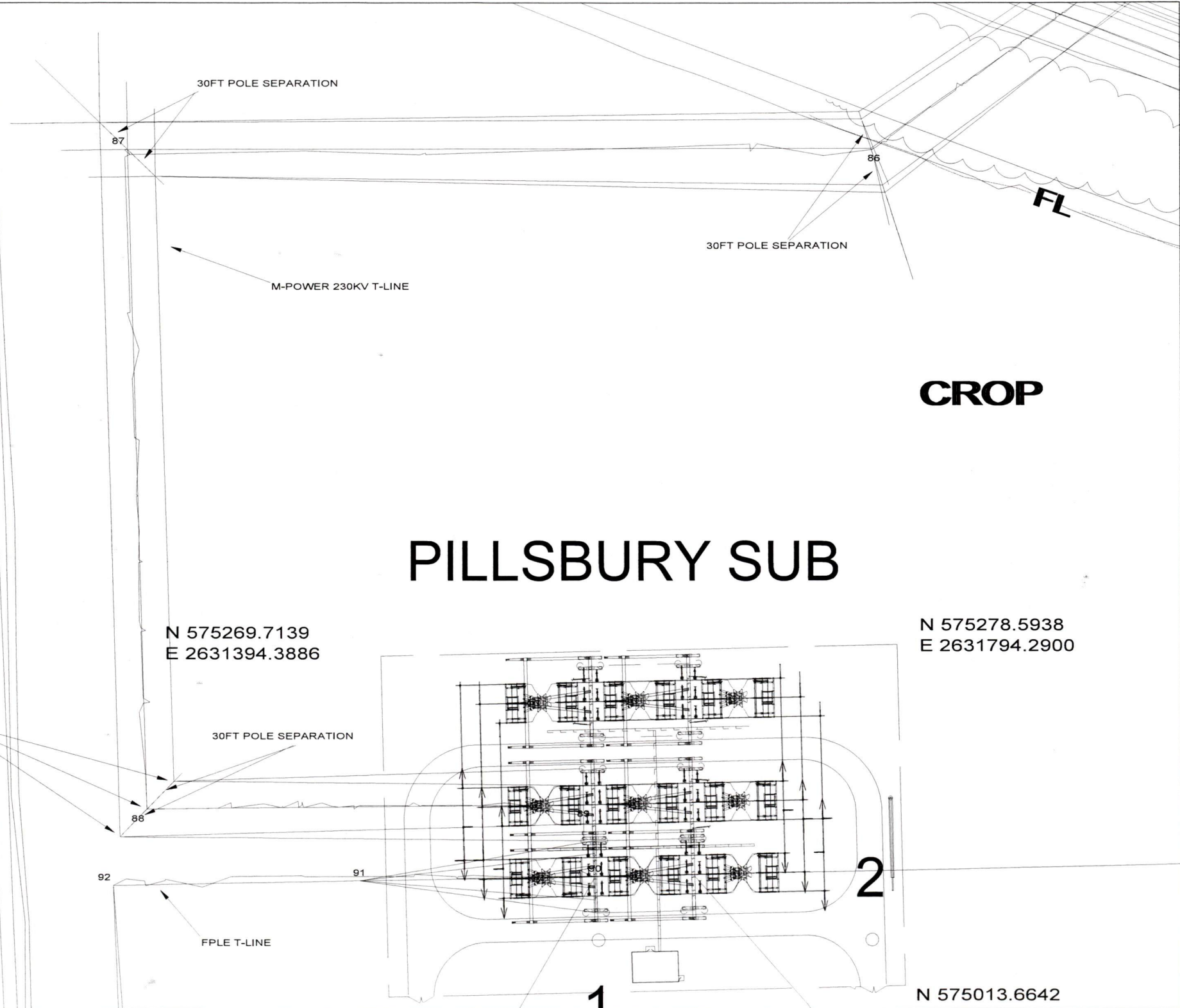


Lawrence Bender

MMS:4499388

Encl.

cc: Mr. Warren Enyart – (w/o enc.)
Mr. Lloyd Anderson – (w/o enc.)
Ms. Jennifer Smestad – (w/o enc.)



PILLSBURY SUB

CROP

N 575269.7139
E 2631394.3886

N 575278.5938
E 2631794.2900

3-STEEL POLE SELF SUPPORTING STRUCTURE
(NO ANCHORS AND GUYS)

N 575013.6642

