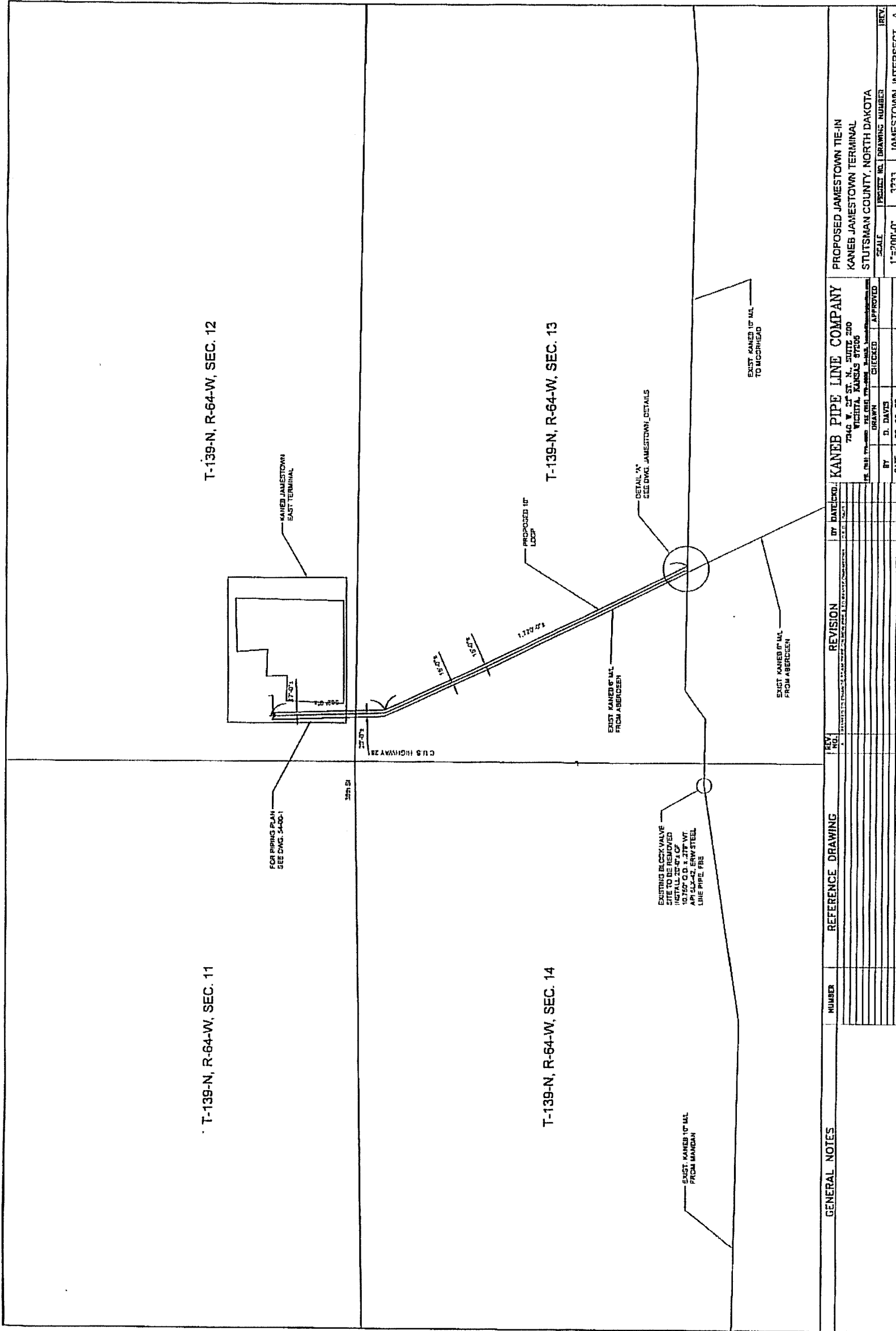


C O N F I D E N T I A L



GENERAL NOTES		REFERENCE DRAWING		REVISION		BY DATE		KANE PIPE LINE COMPANY		PROPOSED JAMESTOWN TIE-IN	
								7340 W. 27 TH ST. N., SUITE 200 VICTORIA, KANSAS 67506		KANE JAMESTOWN TERMINAL STUTSMAN COUNTY, NORTH DAKOTA	
								BY: D. DAVIS		SCALE: 1"=200'-0"	
								DATE: 03-06-03		PROJECT NO.: 3233	
								DESIGNED: []		DRAWING NUMBER: JAMESTOWN_INTERSECT	
								CHECKED: []		REV: A	
								APPROVED: []			

Map One of Three

