

Exhibit KEM-9

Reduction in Cable

$$1630 + 158 = 1788'$$

$$@ \$4.69/ft = \$8325.72$$

Reduction in Labor

$$6 \text{ hr} \times 4 \times 41.98 = \$1007.52$$

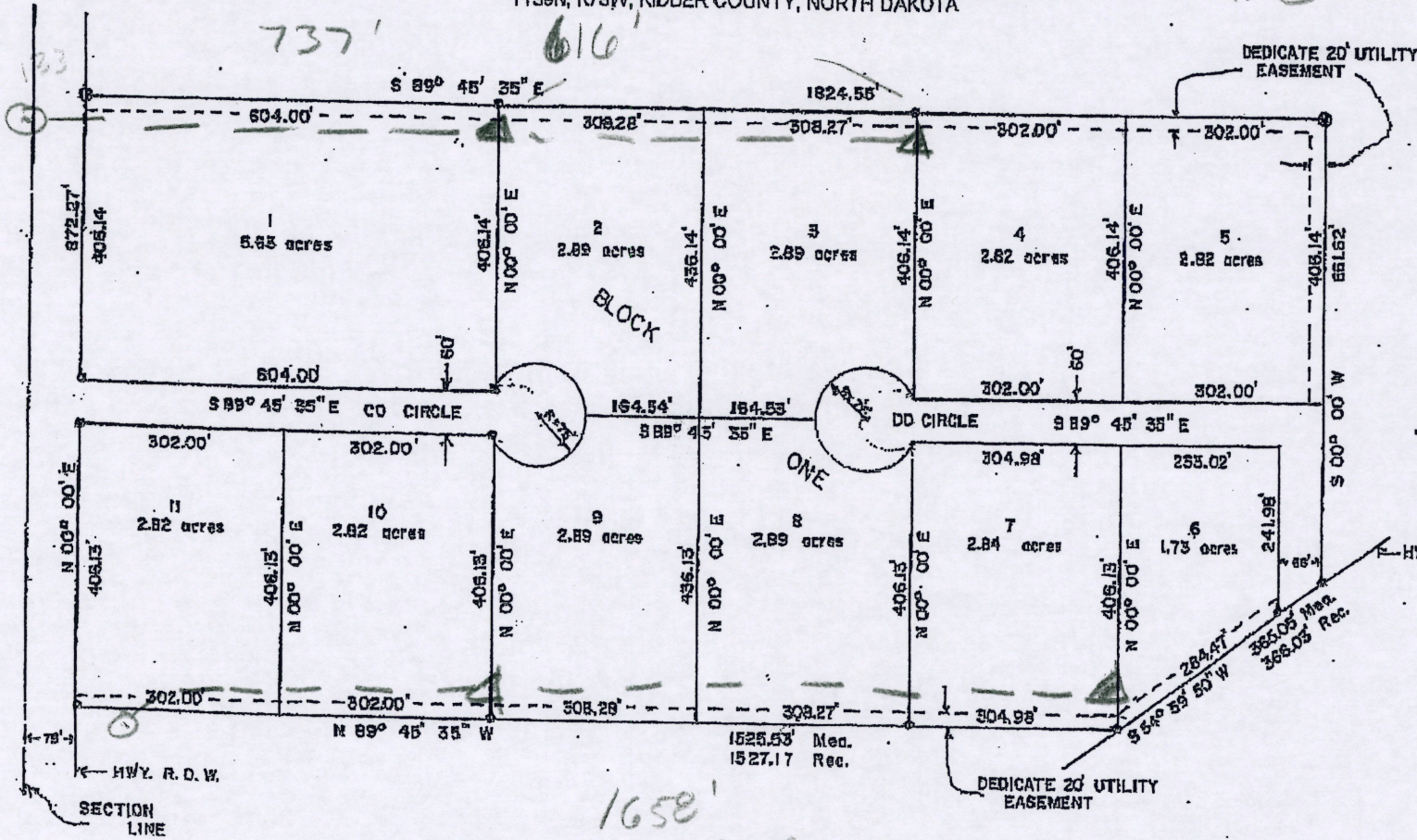
$$\text{Total} = \$9393.24$$

Reduction in Meter Box Standard

$$11 @ 300 = \$3300.00$$

$$\$12,693.24$$

PLAT OF DOCO SUBDIVISION
 BEING LOT A IN PART OF THE NW1/4 OF SECTION 17
 T139N, R73W, KIDDER COUNTY, NORTH DAKOTA



- 1" = 200'
- ⊙ IRON PIPE SET
- ⊙ REBAR SET



Denied - offer of Proof Denied