



For GAS Safety:
This is NFA non-jurisdictional
incidental gathering line - it
is a TX
lane.
Dr
7/8/08
(see 192.8 (a)(1) to
RP 80 2.3)
email sent to
Whiting on
7-8-08

June 27, 2008

Via Facsimile and Certified U.S. Mail

Mr. Alan Moch
North Dakota Public Service Commission
600 E. Boulevard, Dept. 408
Bismarck, ND 58505-0480

**Re: Jurisdictional Status of Pipeline
Natural Gas Line in Mountrail County, ND**

1 **GS-08-518** Filed: 6/30/2008 Pages: 23
Request for Jurisdictional Determination

Whiting Oil and Gas Corporation
Jack Braun

Dear Mr. Moch:

Whiting Oil and Gas Corporation ("Whiting") requests that the North Dakota Public Service Commission ("NDPSC") confirm Whiting's position that a new natural gas line ("Robinson Residue Line"), currently under construction and expected to be put into service in July 2008, is a non-jurisdictional, incidental gathering line and, therefore, not subject to the requirements of 49 C.F.R. Part 192.

Due to the scheduling needs of the capital project, Whiting asks that the NDPSC provide a written response to this request if possible by Friday, July 11, 2008. If NDPSC does not respond, or does not notify Whiting of its intent to respond by July 11, 2008, Whiting will consider the lack of a response as agreement by the NDPSC with Whiting's conclusion that the Robinson Residue Line is a non-jurisdictional gathering line.

Position

Whiting's analysis, detailed below, shows that the Robinson Residue Line is an incidental gathering line in a Class 1 location. Based on 49 C.F.R. § 192.8, only natural gas gathering lines in Class Locations 2, 3 or 4 may be subject to the obligations of 49 C.F.R. Part 192. Natural gas gathering lines located in a Class 1 location are NOT subject to the obligations of 49 C.F.R. Part 192. As such, the Robinson Residue Line is non-jurisdictional and not subject to the obligations of 49 C.F.R. Part 192.

Background

Whiting is in the process of constructing the Robinson Residue Line. The line is a 6-inch nominal pipe size, 0.280-inch wall thickness, fusion-bonded epoxy coated and wrapped steel line that will deliver natural gas from the Whiting gas processing plant to the WBI Holdings, Inc. natural gas transmission line. The approximately 17-mile line will be cathodically

*Whiting Petroleum Corporation
and its wholly owned subsidiary
Whiting Oil and Gas Corporation*

protected by a rectifier and associated anode bed system and is planned to be operated at no more than 750 psig. Whiting will own and operate the Robinson Residue Line.

As shown in the Line Location Maps attached to this letter as Appendix A, the Robinson Residue Line is an intra-state natural gas line located in Mountrail County, ND. The GPS coordinates for the beginning of the line are 48 03 59.27513 latitude and -102 21 09.02967 longitude. The line ends at GPS coordinates 48 17 58.51842 latitude and -102 21 09.20520 longitude.

Jurisdictional Status Determination

The jurisdictional status of the Robinson Residue Line depends upon both:

- the type of line (production / gathering / transmission); and
- the class location (Class 1, 2, 3 or 4).

Type of Line

"Gathering Line" is defined in 49 C.F.R. § 192.3 as "a pipeline that transports gas from a current production facility to a transmission line or main." Attached to this letter as Appendix B (Simplified Process Flow Diagram) is a schematic representation of the Robinson Residue Line showing how it connects the Robinson Gas Plant with the WBI Transmission Line.

Using the criteria included in 49 C.F.R. § 192.8 (*How are onshore gathering lines and regulated onshore gathering lines determined?*) and API RP 80 § 2.2.1.2.6 (*Incidental Gathering*), Whiting has determined that the Robinson Residue Line is an incidental gathering line.

Class Location

In addition to determining that the Robinson Residue Line is a gathering line, Whiting performed a class location study. The study shows that the Robinson Residue Line is located in a sparsely populated, rural area. A field investigation determined that only one or two buildings are within 220 yards of the line in the entire 17-mile distance. A church was identified near the line, but a closer evaluation determined that it was more than 300 yards from the line.

49 C.F.R. § 192.5(a)(1) defines a class location unit as "an onshore area that extends 220 yards (200 meters) on either side of the centerline of any continuous 1-mile (1.6 kilometers) length of pipeline." 49 C.F.R. 192.5(b)(1)(ii) defines a Class 1 location as "[a]ny class location unit that has 10 or fewer buildings intended for human occupancy." Using these two definitions, Whiting has determined that the Robinson Residue Line is located in a Class 1 location.

49 C.F.R. § 192.8 provides that only gathering lines located in Class 2, 3 or 4 locations are potentially jurisdictional lines subject to regulation. Gathering lines in Class 1 locations are non-jurisdictional.

Conclusion

As Whiting has determined that the Robinson Residue Line is an incidental gathering line located in a Class 1 location, Whiting concludes that the Robinson Residue Line is a non-jurisdictional line and the obligations of 49 C.F.R. Part 192 do not apply.

Thank you in advance for your expedited review and disposition of this request. If you have any questions, or wish that I speak with someone on your staff, please contact me at 303-837-4238.

Unless otherwise instructed by NDPSC, Whiting will operate the Robinson Residue Line as a non-jurisdictional gathering line.

Sincerely,

A handwritten signature in blue ink that reads "Jack E. Braun for".

Jack E. Braun
Environmental and Safety Manager
Whiting Petroleum Corporation
1700 Broadway - Suite 2300
Denver, CO 80290

Enclosures: 2

cc: Jim Brown, VP Operations, Whiting Petroleum Corporation
Nicole Tebow, Environmental Specialist, Whiting Petroleum Corporation
Harold Winnie, Community Assistance and Technical Services, PHMSA Central Region

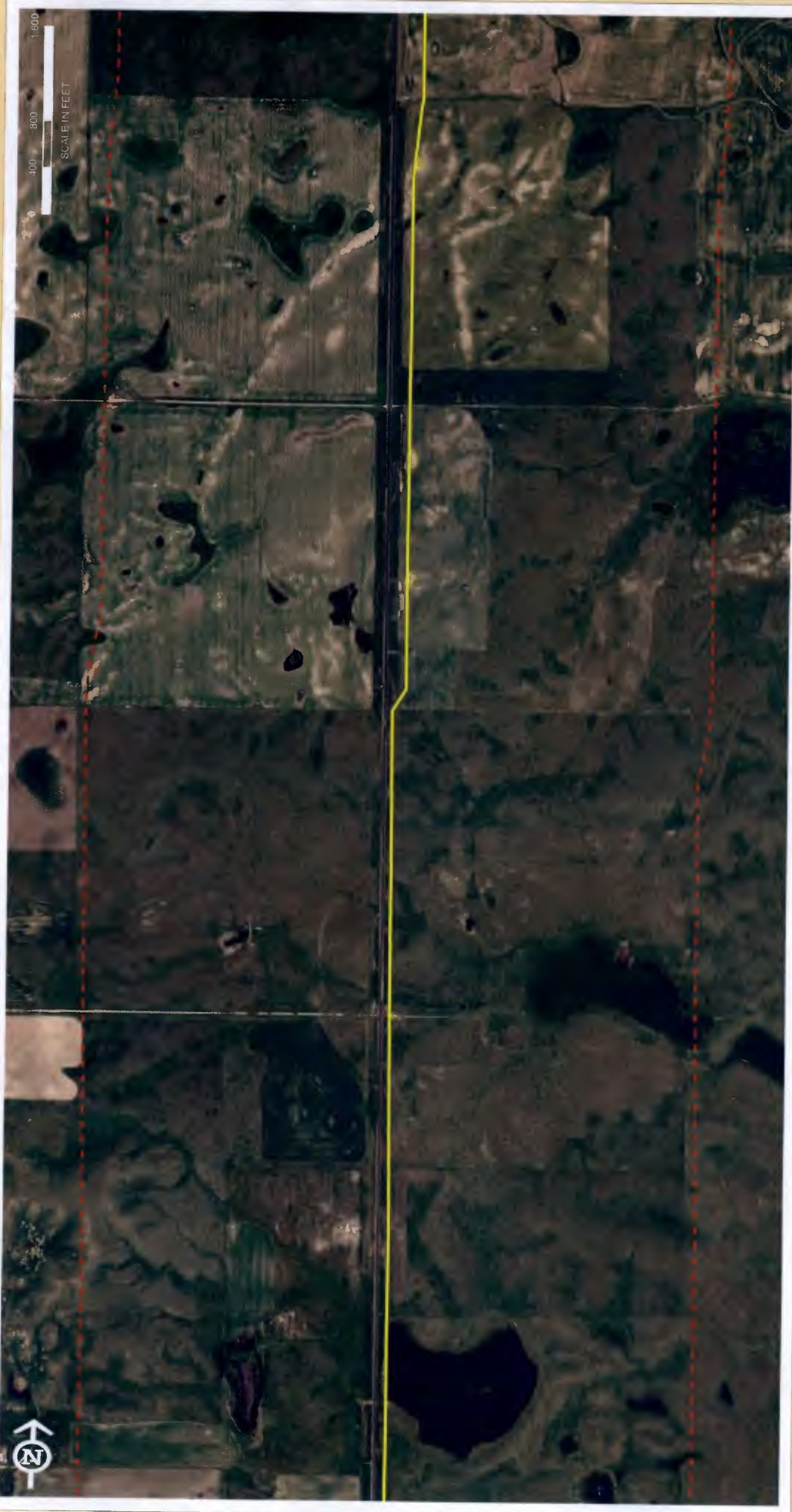
Appendix A



0 400 800 1600
SCALE IN FEET



High Consequence Area (HCA)		High Consequence Area (HCA) Mapping	
Populated Areas Highly Populated Area Other Populated Area Unusually Sensitive Area Ecological Drinking Water Commercial Navigable Waterway		 Whiting Petroleum Corporation Robinson Lake Pipeline Mountrail County, North Dakota	
Legend	Rectifier Pig Launcher/Receiver Block Valve Half Mile Buffer Pipeline	Description 6 inch Natural Gas underground steel line with fusion bond epoxy coating and abrasive resistant overlay on surface of the pipeline.	By JP
		Chkd NT	Enr BB
			Suc SK
Rev	Date		
1	06/2/2008		



400 800 1,600
SCALE IN FEET

Rev	Date	Description	By	Chkd	Engr	Sup
1	06/2/2008	6 inch Natural Gas underground steel line with fusion bond epoxy coating and abrasive resistant overlay on force and rectifier with ground beds	JP	NT	BB	SK

Legend Rectifier Pig Launcher/Receiver Block Valve Half Mile Buffer Pipeline		High Consequence Area (HCA) Populated Areas Highly Populated Area Other Populated Area Commercial Navigable Waterway	Unusually Sensitive Area Ecological Drinking Water
--	--	--	--

High Consequence Area (HCA) Mapping
Whiting Petroleum Corporation
Robinson Lake Pipeline
Mountrail County, North Dakota

Page 2 of 8



0 400 600
SCALE IN FEET

Rev	Date	Description	By	Chkd	Encl	Sup
1	06/2/2008	6 inch Natural Gas underground steel line with fusion bond epoxy coating and abrasive resistant overlay on <u>area of recifier with ground beds</u>	JP	NT	BB	SK



High Consequence Area (HCA) Mapping
Whiting Petroleum Corporation
Robinson Lake Pipeline
Mountrail County, North Dakota

Legend

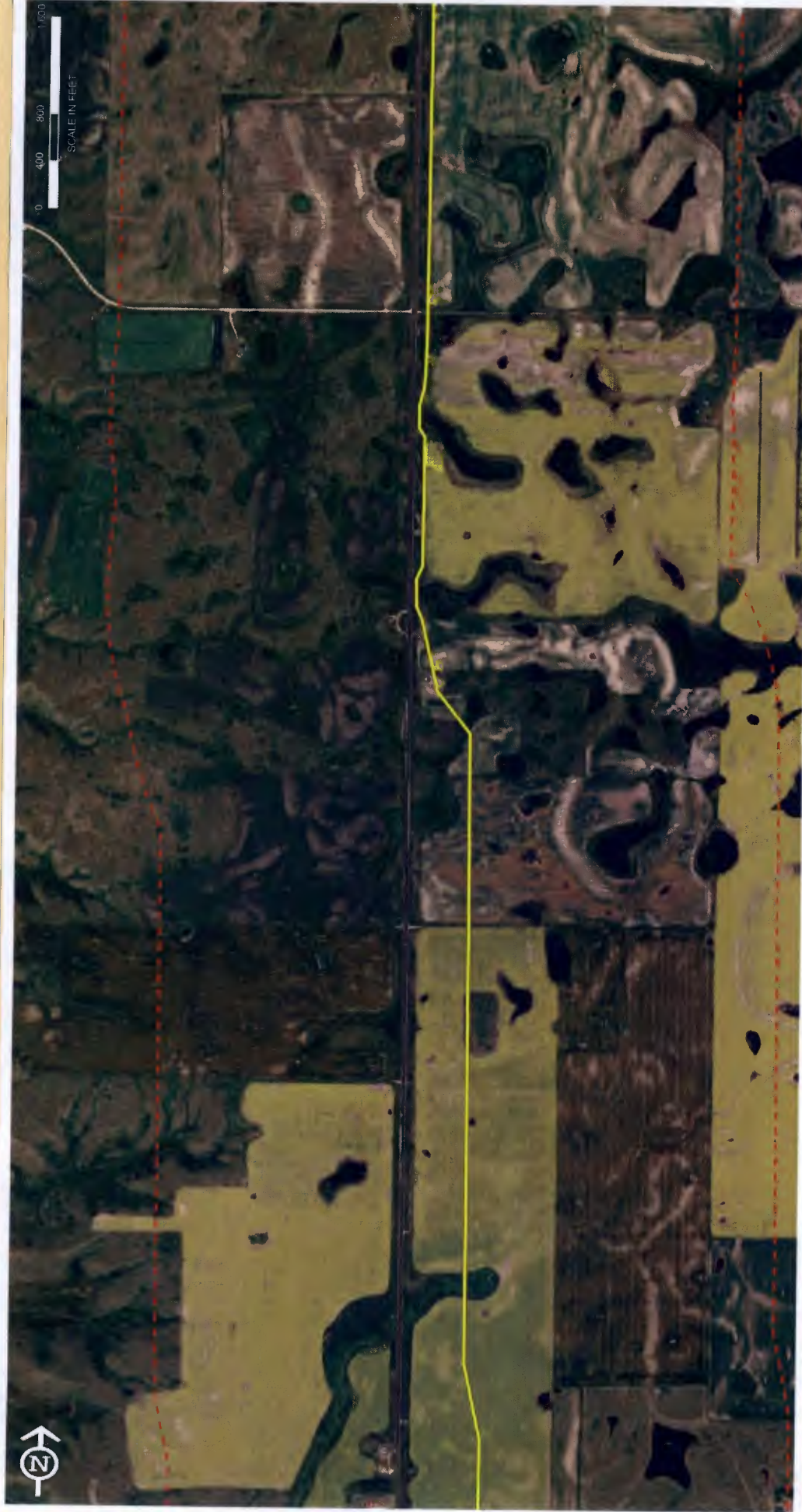
- Recifier
- Pig Launcher/Receiver
- Block Valve
- Half Mile Buffer
- Pipeline

High Consequence Area (HCA)

- Unusually Sensitive Area
- Ecological
- Drinking Water

Populated Areas

- Highly Populated Area
- Other Populated Area
- Commercial Navigable Waterway



High Consequence Area (HCA)		High Consequence Area (HCA) Mapping	
Legend Rectifier Pig Launcher/Receiver Block Valve Half Mile Buffer Pipeline	Populated Areas Highly Populated Area Other Populated Area Commercial Navigable Waterway	Unusually Sensitive Area Ecological Drinking Water	Whiting Petroleum Corporation Robinson Lake Pipeline Mountrail County, North Dakota
Rev 1	Date 06/22/2008	Description 6 inch Natural Gas underground steel line with fusion bond epoxy coating and abrasive resistant overlay on	By JP
		Chkd NT	Site SK
		Ent BB	





High Consequence Area (HCA)		Whiting Petroleum Corporation				
<p>Legend</p> <ul style="list-style-type: none"> Rectifier Pig Launcher/Receiver Populated Areas Highly Populated Area Other Populated Area Block Valve Half Mile Buffer Pipeline Unusually Sensitive Area Ecological Drinking Water Commercial Navigable Waterway 		<p>High Consequence Area (HCA) Mapping</p> <p>Whiting Petroleum Corporation Robinson Lake Pipeline Mountrail County, North Dakota</p>				
Rev	Date	Description	By	Chkd	Enter	Site
1	06/22/2008	6 inch Natural Gas underground steel line with fusion bond epoxy coating and abrasive resistant overlay on bases of rectifier with ground leads	JP	NT	BB	SK



Legend

- Rectifier
- Pig Launcher/Receiver
- Populated Areas
- Highly Populated Area
- Other Populated Area
- Drinking Water
- Pipeline
- Commercial Navigable Waterway

High Consequence Area (HCA)

- Unusually Sensitive Area
- Ecological

Rev	Date	Description	By	Chkd	Ensr	Sue
1	06/2/2008	6 inch Natural Gas underground steel line with fusion bond epoxy coating and abrasive resistant overlay on 3/4 inch B-11 recather with ground rods	JP	NT	BB	SK



High Consequence Area (HCA) Mapping
 Whiting Petroleum Corporation
 Robinson Lake Pipeline
 Mountrail County, North Dakota



0 100 200
SCALE IN FEET



Rev	Date	Description	By	Chkd	Engr	Sup
1	06/2/2008	6 inch Natural Gas underground steel line with fusion bond epoxy coating and abrasive resistant overlay on surface of steel line for high strength	JP	NT	BB	SK

Legend	High Consequence Area (HCA)
Rectifier	Unusually Sensitive Area
Pig Launcher/Receiver	Ecological
Block Valve	Highly Populated Area
Half Mile Buffer	Other Populated Area
Pipeline	Drinking Water
	Commercial Navigable Waterway

WHITING

High Consequence Area (HCA) Mapping
 Whiting Petroleum Corporation
 Robinson Lake Pipeline
 Mountrail County, North Dakota



0 400 800
SCALE IN FEET



Rev	Date	Description	By	Chkd	Ensr	Sup
1	06/2/2008	6 inch Natural Gas underground steel line with fusion bond epoxy coating and abrasive resistant overlay on <u>1.0 mils thick polyethylene glycol (PE) coating</u>	JP	NT	BB	SK



High Consequence Area (HCA) Mapping
Whiting Petroleum Corporation
Robinson Lake Pipeline
Mountrail County, North Dakota

Legend

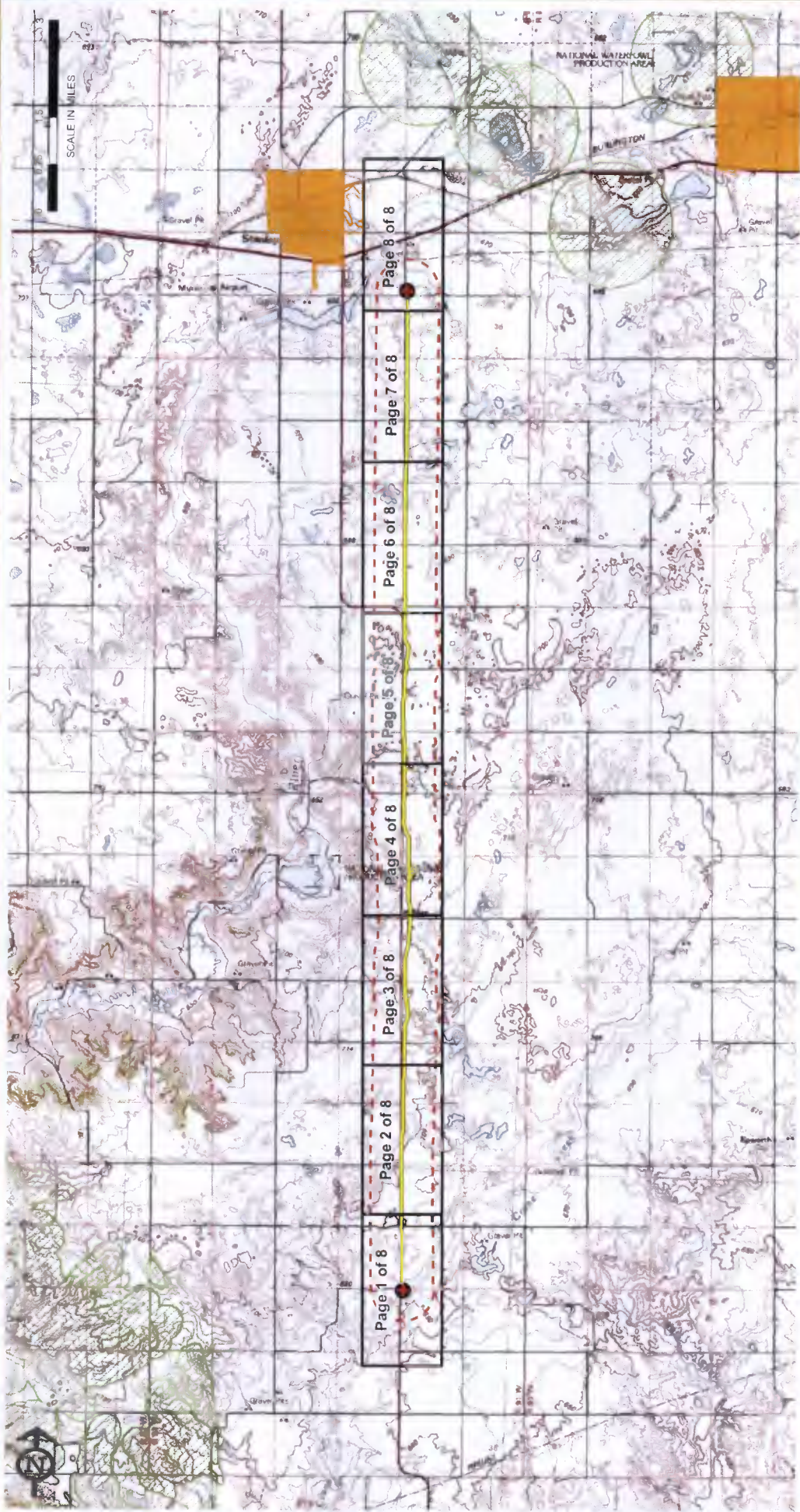
- Rectifier
- Pig Launcher/Receiver
- Block Valve
- Half Mile Buffer
- Pipeline

High Consequence Area (HCA)

- Unusually Sensitive Area
- Ecological
- Drinking Water

Populated Areas

- Highly Populated Area
- Other Populated Area
- Commercial Navigable Waterway

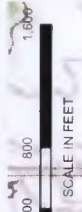


Legend		High Consequence Area (HCA)		Description		By	Chkd	Engr	Sup
	Rectifier		Populated Areas		6 inch Natural Gas underground steel line with fusion bond epoxy coating and abrasive resistant overlay on top of 6 inch diameter polyethylene pipe	JP	NT	BB	SK
	Pig Launcher/Receiver		Unusually Sensitive Area						
	Block Valve		Highly Populated Area						
	Half Mile Buffer		Other Populated Area						
	Pipeline		Ecological						
			Drinking Water						
			Commercial Navigable Waterway						



High Consequence Area (HCA) Mapping
 Whiting Petroleum Corporation
 Robinson Lake Pipeline
 Mountrail County, North Dakota

Index Map



SCALE IN FEET

High Consequence Area (HCA) Mapping
 Whiting Petroleum Corporation
 Robinson Lake Pipeline
 Mountrail County, North Dakota



Rev	Date	Description	By	Chkd	Enter	Sue
1	06/2/2008	6 inch Natural Gas underground steel line with fusion bond epoxy coating and abrasive resistant overlay on surface of the steel pipe.	JP	NT	BB	SK

Legend

- Rectifier
- Pig Launcher/Receiver
- Block Valve
- Half Mile Buffer
- Pipeline

High Consequence Area (HCA)

- Unusually Sensitive Area
- Ecological
- Drinking Water
- Commercial Navigable Waterway

Populated Areas

- Highly Populated Area
- Other Populated Area



High Consequence Area (HCA)		High Consequence Area (HCA) Mapping				
Whiting Petroleum Corporation Robinson Lake Pipeline Mountrail County, North Dakota		Whiting Petroleum Corporation Robinson Lake Pipeline Mountrail County, North Dakota				
Rev	Date	Description	By	Checked	Entered	Sub
1	06/22/2008	6 inch Natural Gas underground steel line with fusion bond epoxy coating and abrasive resistant overlay on 1.5 mil thick recifier with 1/2 mile buffer	JP	NT	BB	SK



Legend

- Recifier
- Pig Launcher/Receiver
- Block Valve
- Half Mile Buffer
- Pipeline

High Consequence Area (HCA)

- Unusually Sensitive Area
- Ecological
- Drinking Water
- Commercial Navigable Waterway

Populated Areas

- Highly Populated Area
- Other Populated Area

Rev | **Date** | **Description** | **By** | **Chkd** | **Entr** | **Site**

1	06/22/2008	6 inch Natural Gas underground steel line with fusion bond epoxy coating and abrasive resistant overlay on areas of recifier with 1/2 mile buffer	JP	NT	BB	SK

WHITING

High Consequence Area (HCA) Mapping
Whiting Petroleum Corporation
Robinson Lake Pipeline
Mountrail County, North Dakota

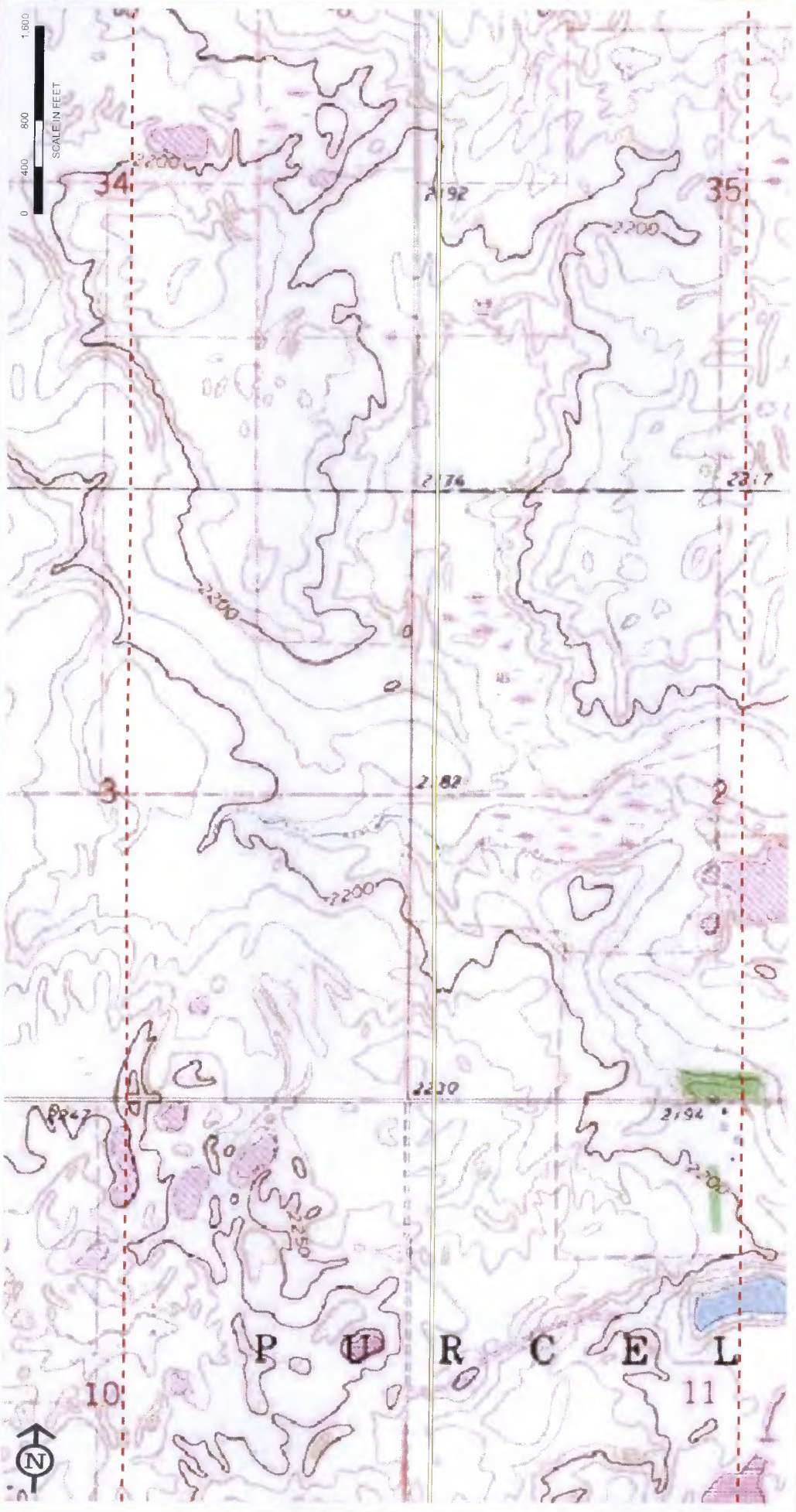
Page 3 of 8



		High Consequence Area (HCA) Mapping Whiting Petroleum Corporation Robinson Lake Pipeline Mountrail County, North Dakota						
Legend Rectifier Pig Launcher/Receiver Block Valve Half Mile Buffer Pipeline	High Consequence Area (HCA) Unusually Sensitive Area Ecological Drinking Water Populated Areas Highly Populated Area Other Populated Area Commercial Navigable Waterway	Description 6 inch Natural Gas underground steel line with fusion bond epoxy coating and abrasive resistant overlay on	Rev 1	Date 06/2/2008	By JP	Chkd NT	Engr BB	Sup SK



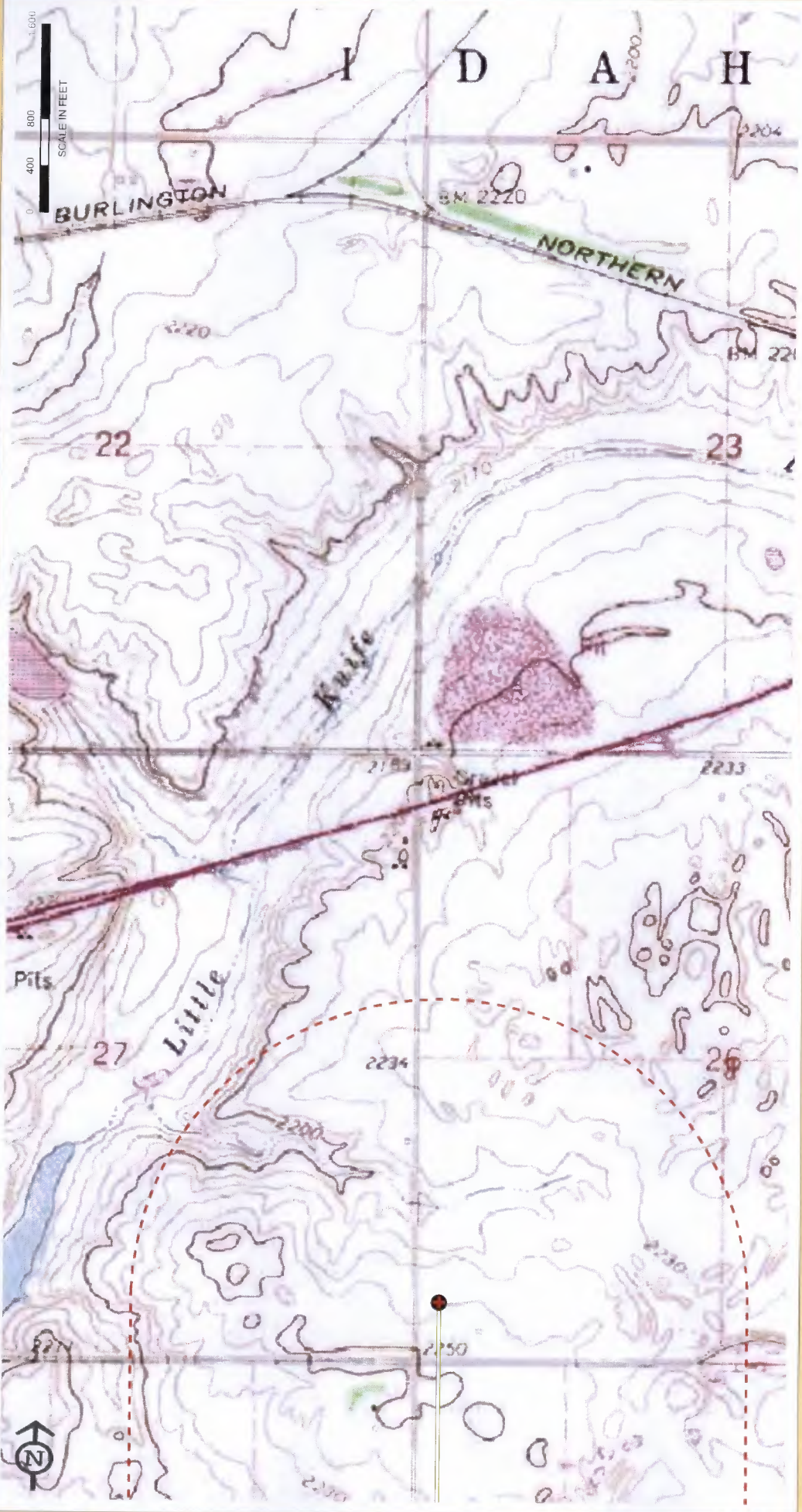
High Consequence Area (HCA) Mapping:						
Whiting Petroleum Corporation Robinson Lake Pipeline Mountrail County, North Dakota						
Rev	Date	Description	BY	CHKD	ENR'D	SUR
1	06/2/2008	6 inch Natural Gas underground steel line with fusion bond epoxy coating and abrasive resistant overlay on bore and for water well surrounds	JP	NT	BB	SK
High Consequence Area (HCA)		Unusually Sensitive Area				
Populated Areas		Ecological				
Highly Populated Area		Drinking Water				
Other Populated Area		Commercial Navigable Waterway				
Recifier						
Pig Launcher/Receiver						
Block Valve						
Half Mile Buffer						
Pipeline						



Legend		High Consequence Area (HCA)		Rev	Date	Description	BV	Class	Encl	Sub
[R]	Rectifier	[Red Box]	Unusually Sensitive Area	1	06/2/2008	6 inch Natural Gas underground steel line with fusion bond epoxy coating and abrasive resistant overlay on steel and fertilizer with gas hydrate	JP	NT	BB	SK
[X]	Pig Launcher/Receiver	[Orange Box]	Highly Populated Area							
[Green Box]	Block Valve	[Blue Box]	Other Populated Area							
[Blue Box]	Half Mile Buffer	[Green Box]	Commercial Navigable Waterway							
[Red Dashed Line]	Pipeline									



High Consequence Area (HCA) Mapping
 Whiting Petroleum Corporation
 Robinson Lake Pipeline
 Mountrail County, North Dakota



Legend

- Rectifier
- Pig Launcher/Receiver
- Block Valve
- Half Mile Buffer
- Pipeline

High Consequence Area (HCA)

- Unusually Sensitive Area
- Ecological
- Drinking Water

Populated Areas

- Highly Populated Area
- Other Populated Area
- Commercial Navigable Waterway

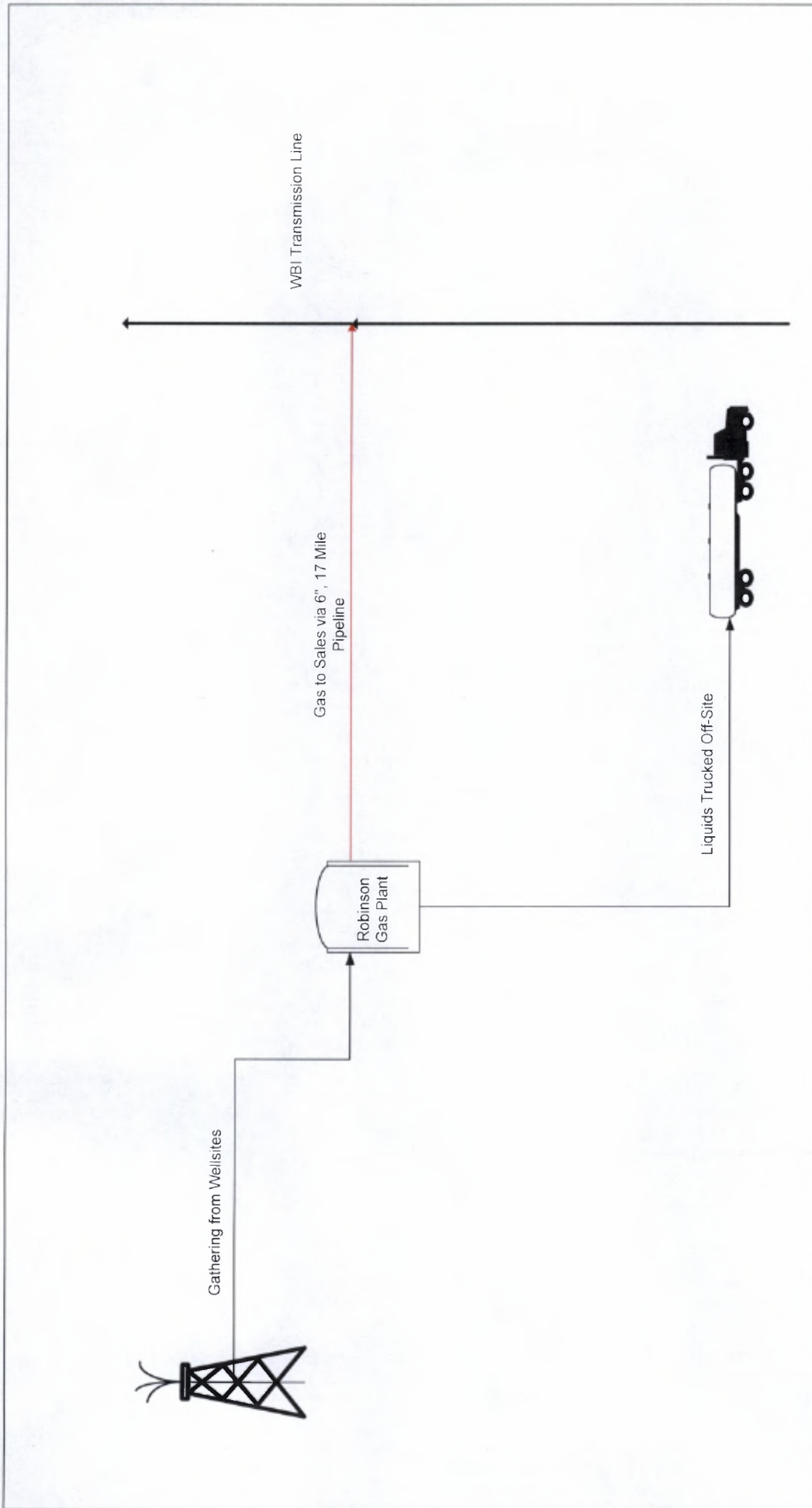
Rev	Date	Description	By	Chkd	Engr	Su
1	06/2/2008	6 inch Natural Gas underground steel line with fusion bond epoxy coating and abrasive resistant overlay on houses and rectifier with ground beds	JP	NT	BB	SK

WHITING

High Consequence Area (HCA) Mapping
 Whiting Petroleum Corporation
 Robinson Lake Pipeline
 Mountrail County, North Dakota

Page 8 of 8

Appendix B



Rev	Date	Description	By	Chkd	Engr	Sup
1	04/24/08	Drawn based on discussions with Bert Bloom	NT	BB		SK



Simplified Process Flow Diagram
 Robinson Residue Line
 Mountrail County, North Dakota
 Q:\Nicole\Pipelines.vsd