

North Dakota  
 Public Service Commission  
 DWC W 1/2 Section 19 Permit 8802  
 Pre-mine Slopes 2%

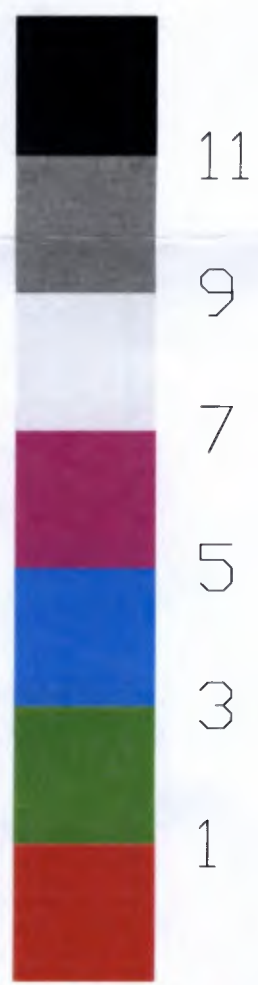
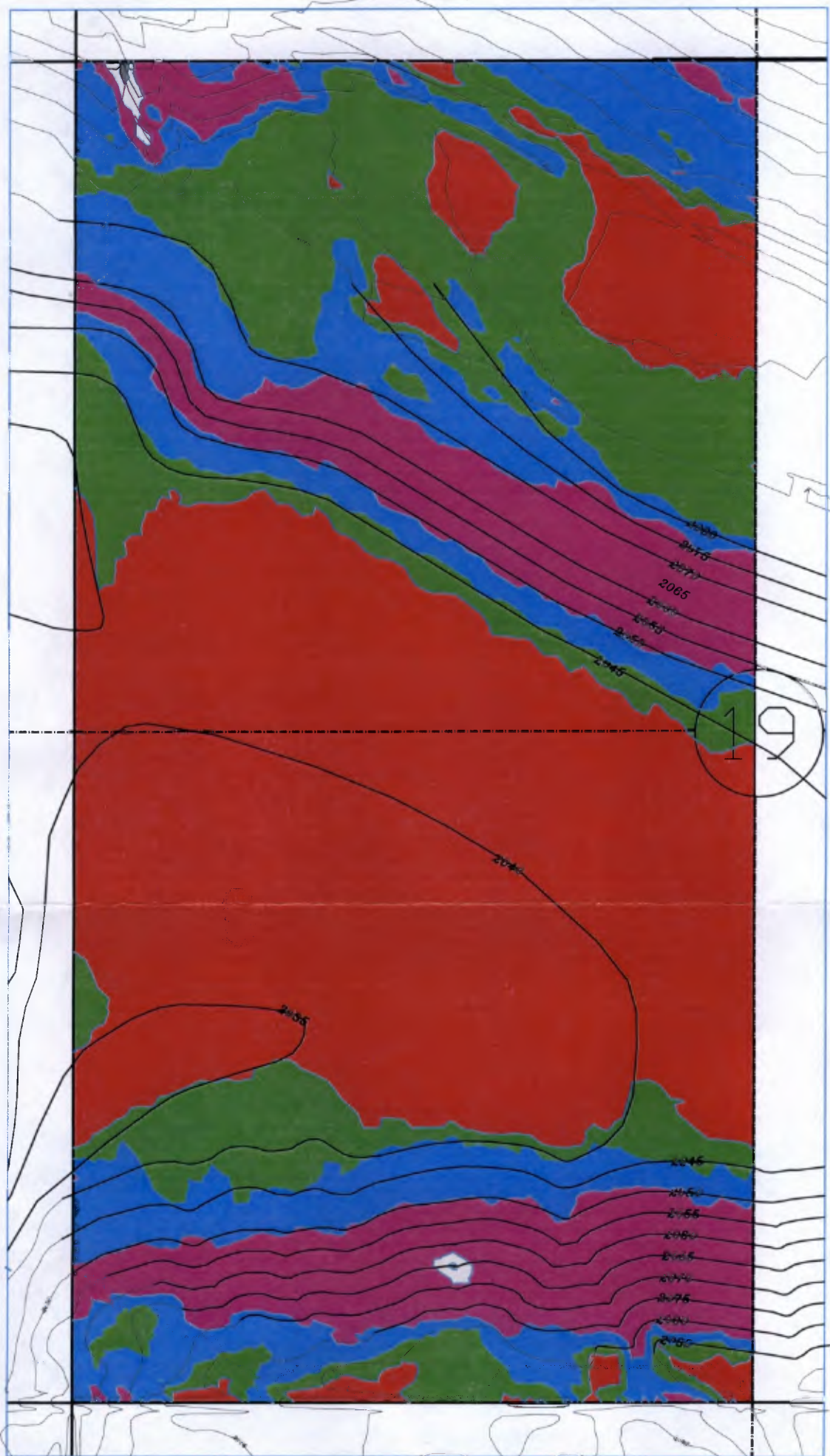
Approved by **Michael Berg PE**

SCALE SHEET 1 of 1

ZONE	REV	DESCRIPTION	DATE	APPROVED

33 RC-08-612 Filed: 7/23/2009 Pages: 3  
 Exhibit 10 Pre-mining - Post-mining Comparison





North Dakota  
 Public Service Commission  
 DWC W 1/2 Section 19 Permit 8802  
 Post-mine Slopes 2%

Approved by **Michael Berg PE**

SCALE SHEET 1 of 1

ZONE	REV	DESCRIPTION	DATE	APPROVED

Slope	Pre - Mining		Post mining		Change	
	Acres	% of Acres	Acres	% of Acres	Acres	Percent
0-1%	33.4	10.4%	147.9	46.0%	114.5	342.9%
1-2%	83.5	26.0%	41.0	12.7%	-42.5	-50.9%
2-3%	117.8	36.6%	21.7	6.8%	-96.1	-81.6%
3-4%	59.5	18.5%	27.7	8.6%	-31.8	-53.4%
4-5%	15.9	5.0%	24.8	7.7%	8.9	55.8%
5-6%	7.0	2.2%	46.7	14.5%	39.7	563.1%
6-7%	2.9	0.9%	10.4	3.2%	7.5	258.5%
7-8%	1.1	0.4%	1.1	0.3%	-0.1	-7.5%
8-9%	0.5	0.1%	0.1	0.0%	-0.3	-68.7%
Totals**	321.6		321.4			

**Average Slope\* 2.41%**

**2.27%**

**0.14%**

\* Slope was calculated by SurvCAD 2009

\*\* Acre difference is due to a small amount of slopes which was greater than 9%. These acres are not shown but are included in the average slope shown