

RECEIVED

September 22, 2008

SEP 25 2008

PUBLIC SERVICE COMMISSION

Westwood Professional Services

7699 Anagram Drive  
Eden Prairie, MN 55344

MAIN 952-937-5150  
FAX 952-937-5822  
TOLL FREE 1-888-937-5150  
EMAIL wps@westwoodps.com  
www.westwoodps.com



Mr. Darrell Nitschke  
Executive Secretary  
North Dakota Public Service Commission  
600 East Boulevard, Dept. 408  
Bismarck, ND 58505-0480

**Re: Letter of Intent and Request for Reduction of Waiting Period  
Border Winds Wind Energy Project  
File 20071163**

Dear Mr. Nitschke:

On behalf of Sequoia Energy U.S. Inc. (Sequoia), Westwood Professional Services is pleased to notify the North Dakota Public Service Commission (PSC) of Sequoia's intent to construct and operate an energy conversion facility in northeastern North Dakota near the community of Rolla in Rolette and Towner Counties.

Sequoia is a renewable energy company with a head office in Winnipeg, Manitoba. Registered in Delaware, Sequoia is licensed to conduct renewable energy work in North Dakota. As a pioneer in developing a "community first approach" to wind energy development, Sequoia has been instrumental in demonstrating that wind energy is a safe, reliable, economically sound, and socially responsible source of energy for North America. Sequoia prides itself in acting responsibly and collaboratively with key stakeholders. The company seeks to facilitate a smooth introduction of renewable energy into established energy production and transmission networks.

This letter and its attachments are intended to fulfill Sequoia's obligations under Chapter 69-06-03 of the North Dakota Administrative Code. Sequoia is submitting this Letter of Intent prior to filing an application for the required Certificate of Site Compatibility. Sequoia is requesting approval from the PSC to reduce the prescribed one-year notice period between filing of the Letter of Intent and filing of the application for a Certificate of Site Compatibility.

**Size and Type of Facility**

The Border Winds Wind Energy Project (Border Winds) will be configured as a wind energy conversion facility with a nameplate capacity of approximately 150 megawatts (MW). The system will include wind turbines mounted on tubular steel towers, a collection system consisting of buried electrical cables, access roads, an operations and maintenance facility, and a substation that will connect the system to an Xcel Energy transmission line that runs through the project area. The project will use 66 Siemens turbines (model SWT 2.3-93) with a nameplate capacity of 2.3 MW each.

Pages: 3

Filed: 9/25/2008

1 PU-08-797  
Letter of Intent

Sequoia Energy US Inc.

Mr. Darrell Nitschke  
September 12, 2008  
Page 2



The facility will be constructed to serve the electric power needs of people and industries in North Dakota and the Upper Midwest Region of the United States.

### **Map of Study Area**

The Border Winds project area encompasses approximately 122 square miles of land in Rolette and Towner Counties, North Dakota. The project area includes land surrounding the town of Rolla in the Townships of Fairview, Mount Pleasant and Baxter, Rolette County, and the Townships of Picton and Mount View in Towner County, North Dakota. A map showing the proposed project location is provided in Exhibit 1.

### **Anticipated Construction and Operation Schedule**

Sequoia anticipates project construction on Border Winds will start in the Summer or Fall of 2009 and that the facility will become operational in the Fall of 2010.

### **Estimated Cost of Construction**

The estimated cost for the construction of the proposed facility is \$300 million.

### **Request for Reduction of Waiting Period**

Sequoia respectfully requests that the waiting period between the submission of this Letter of Intent and the submission of the Site Compatibility Permit Application be reduced from one year to one day.

We look forward to working with PSC and its staff to obtain the required certificate for the proposed Border Winds facility. Should you have any questions or require additional information please do not hesitate to contact me at (952) 906-7423. Thank you for your time and attention.

Sincerely,

WESTWOOD PROFESSIONAL SERVICES

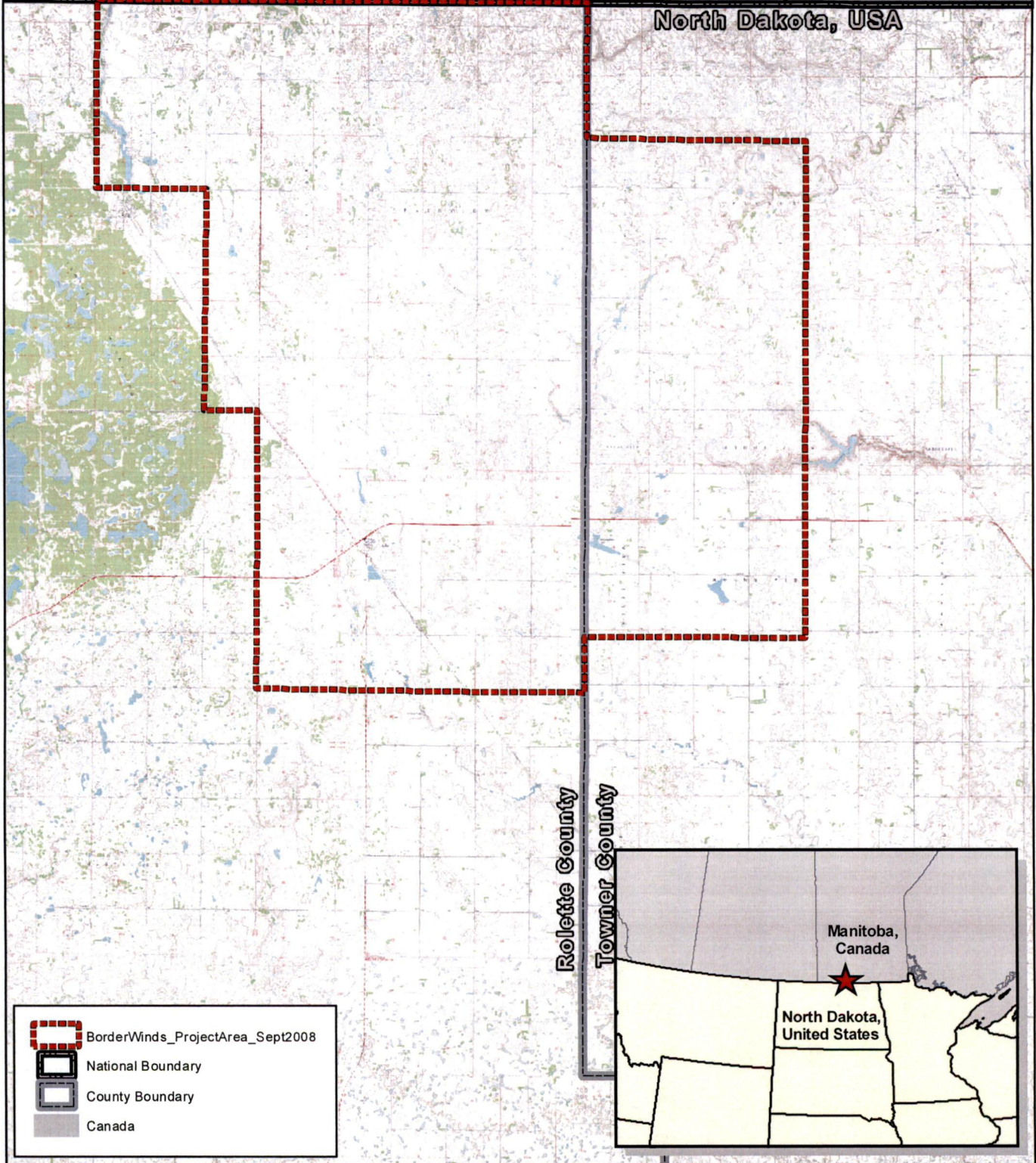





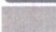
Amy Linnerooth  
Environmental Scientist

Attachment: Exhibit 1

cc: Ian Witherspoon, Sequoia Energy US Inc.  
Rob Bouta, Westwood Professional Services

Manitoba, Canada  
North Dakota, USA



 BorderWinds\_ProjectArea\_Sept2008  
 National Boundary  
 County Boundary  
 Canada

USGS 24K DRG U.S. Department of Agriculture (revision, unknown), Natural Resources Conservation Service (2001), ESRI (2005), Westwood (2007).

# Border Winds Energy Project

Rolette and Towner Counties, North Dakota

Site Location

EXHIBIT 1



Westwood Professional Services, Inc.  
7699 Anagram Drive  
Eden Prairie, MN 55344

PHONE 952-937-5150  
FAX 952-937-5822  
TOLL FREE 1-888-937-5150

www.westwoodps.com

