

TRANSMITTAL

Westwood Professional Services
7699 Anagram Drive
Eden Prairie, MN 55344

MAIN 952-937-5150
FAX 952-937-5822
TOLL FREE 1-888-937-5150
EMAIL wps@westwoodps.com
www.westwoodps.com



Date: October 28, 2009

Re: **Border Winds Wind Energy Project Application for Certificate of Site
Compatibility; Case No. PU-08-797**
File 20071163.00

RECEIVED

To: Mr. Jerry Lein
North Dakota Public Service Commission
600 East Boulevard, Dept. 408
Bismarck, ND 58505

OCT 28 2009

PUBLIC SERVICE COMMISSION

From: Rob Bouta

Items:	No	Description
	1	Final Project Layout
	2	Final Project Layout with Exclusion and Avoidance Areas
	3	Avian Survey and Risk Assessment
	4	Class III Intensive Cultural Resources Survey
	5	Wetland Delineation Report
	6	Rare Species and Natural Communities Assessment

Purpose: For your approval

Remarks: I am enclosing 11 copies of the above materials as you requested.

These materials are submitted in support of the Public Hearing that is scheduled for November 3, 2009 in the City of Rolla.

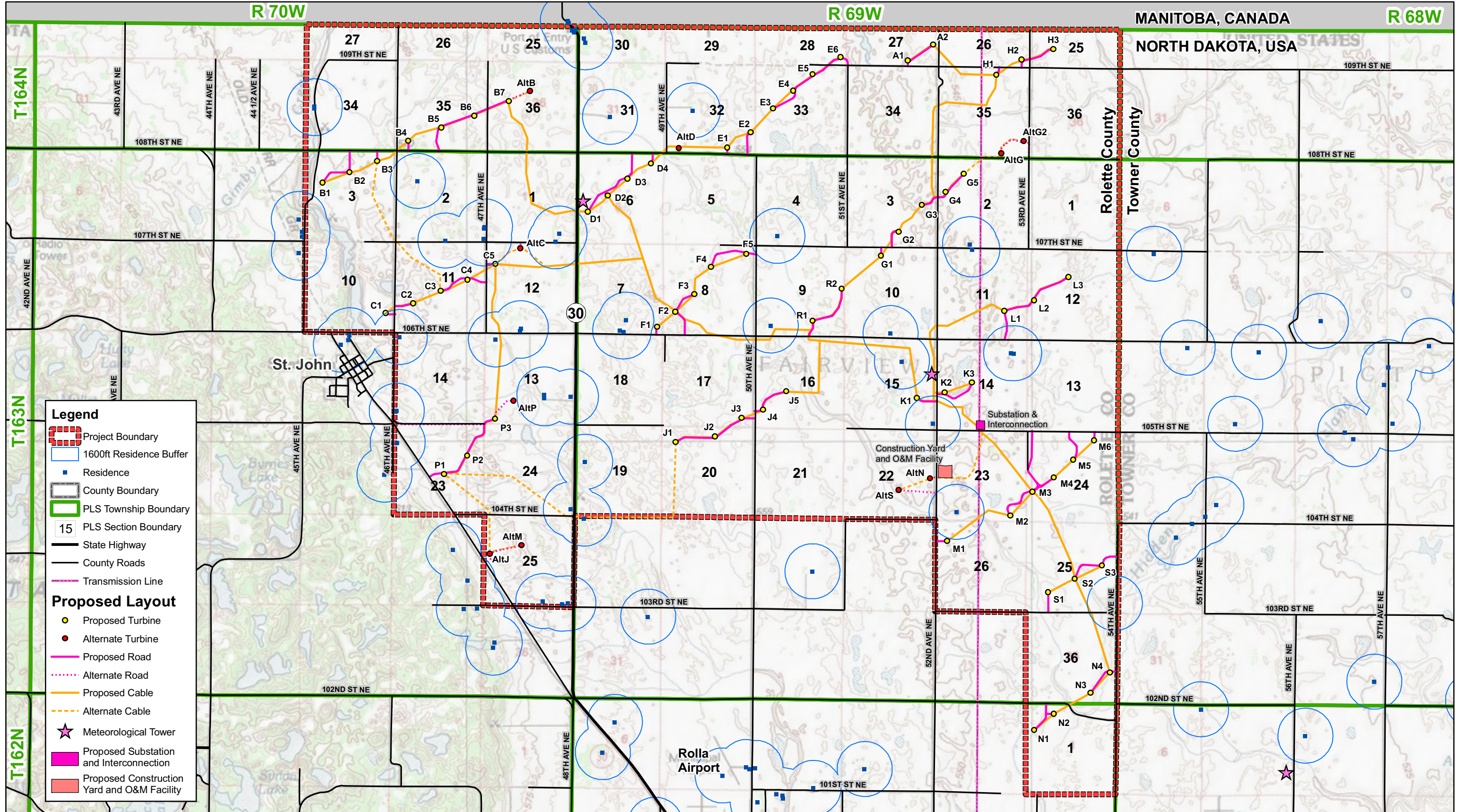
If you have questions, please call me at (952) 906-7436 or email me at rob.bouta@westwoodps.com.

Delivery: Overnight

cc: File; Sequoia Energy

21 PU-08-797 Filed: 10/28/2009 Pages: 226
**Final Project Layouts, Avian & Cultural Surveys,
Wetland Report, Rare Species Assessment**

Sequoia Energy US Inc.
Rob Bouta



Data Source(s): ESRI NGS WMS USGS Topography (various dates); Province Boundaries, ESRI Data (2005-2008), Muni Boundaries, NDDOT (2008), North Dakota Geologic Survey US PLS System (1994), Roads, NDDOT (2008); County Boundaries, North Dakota State Water Commission (2002); Westwood (2009); Sequoia Energy (2009).

Border Winds Energy Project

Rolette County, North Dakota

Final Project Layout

EXHIBIT 1



Westwood Professional Services, Inc.
7699 Anagram Drive
Eden Prairie, MN 55344

PHONE 952-937-5150
FAX 952-937-5822
TOLL FREE 1-888-937-5150

www.westwoodps.com



R 70W

R 69W

MANITOBA, CANADA

R 68W

NORTH DAKOTA, USA

T164N

T163N

T162N

Legend

- Project Boundary
- County Boundary
- PLS Township Boundary
- PLS Section Boundary
- State Highway
- County Roads
- Transmission Line

Proposed Layout

- Proposed Turbine
- Alternate Turbine
- Proposed Road
- Alternate Road
- Proposed Cable
- Alternate Cable
- Meteorological Tower
- Proposed Substation and Interconnection
- Proposed Construction Yard and O&M Facility

Avoidance Areas

- Municipality
- Woodland and Shelter Belt
- Watercourses
- Wetlands

Exclusion Areas

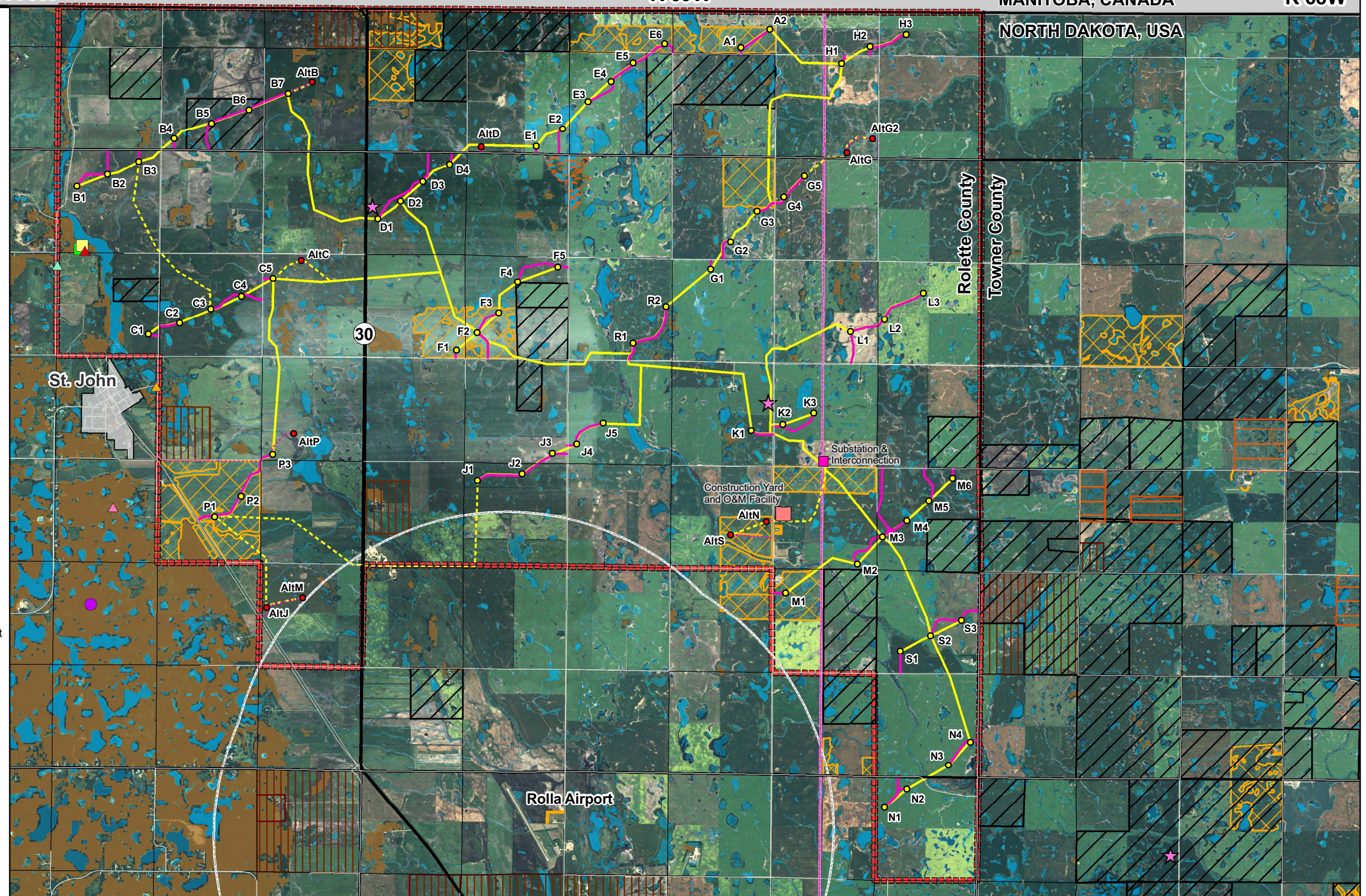
- Airport Height Limitation: Prohibits structures, on average, over 372 feet tall
- Cultural Resources (Historic and Archaeological Sites)
- North Dakota State Land Department

Rare and Unique Natural Features

- Aspen Woodland
- Calcareous Fen
- Tallgrass Prairie
- Few-flowered Spikerush
- Indianpipe
- Sheathed Pondweed
- Chestnut-sided Warbler

Other Areas

- Conservation Reserve Program
- USFWS Wetland Easement
- Potential Prairie



Data Source(s): 2005 USDA-FSA- APFO Digital Ortho Mosaic (2006); U.S. Department of Agriculture, Farm Service Agency (2008); US Fish and Wildlife Service (2008); Province Boundaries, ESRI Data (2005-2008); Muni Boundaries, NDDOT (2008); North Dakota Geologic Survey US PLS System (1994); Roads, NDDOT (2008); Airport Zone Map, Rolla Airport Zoning Board (2006); County Boundaries, North Dakota State Water Commission (2002); North Dakota Natural Heritage Inventory, North Dakota Parks and Recreation Department (2008); Westwood (2009); Sequoia Energy (2009); North Dakota State Land, ND Land Department (2002); USFWS Waterfowl Production Boundaries and USFWS Wetland Easement Boundaries, Dave Bolin and J. Clark Stayer WMD (2007); Conservation Reserve Program, USDA-FSA, North Dakota State Office (2006); Woodland and Shelter Belt Area from USFWS, Refuges & Wildlife, Region 6 (2001); National Hydrography Dataset (NHD), USGS, US EPA, USDA Forest Service and other partners (various dates); USFWS, National Wetland Inventory (various dates).

Border Winds Energy Project

Rolette County, North Dakota

Final Project Layout with Exclusion and Avoidance Areas



Westwood Professional Services, Inc.
7699 Anagram Drive
Eden Prairie, MN 55344

PHONE 952-937-5150
FAX 952-937-5822
TOLL FREE 1-888-937-5150

www.westwoodps.com



Map Document: (P:\20071163\gis\psc320071163\psc02B_NoRDSN.mxd) 10/28/2009 4:58:10 PM