

**Legend**

- Project Boundary
- 1640ft Residence Buffer
- Residence
- County Boundary
- PLS Township Boundary
- PLS Section Boundary
- State Highway
- County Roads
- Transmission Line

**Proposed Layout**

- Proposed Turbine
- Alternate Turbine
- Proposed Road
- Alternate Road
- Temporary Proposed Road
- Proposed Cable
- Alternative Cable
- Proposed Crane Path\*
- Alternative Crane Path
- Meteorological Tower
- Proposed Substation and Interconnection
- Proposed Construction Yard and O&M Facility

Data Source(s): The data used in this graphic has been obtained from sources deemed reliable. While every effort has been made to incorporate accurate data, Westwood cannot guarantee the accuracy. Westwood (2010); ESRI NGS WMS USGS Topography (various dates); Province Boundaries, ESRI Data (2005-2008), Muni Boundaries, NDDOT (2008), North Dakota Geographic Survey US PLS System (1994), Roads, NDDOT (2008); County Boundaries, North Dakota State Water Commission (2002); Sequoia Energy (2010).

**Westwood Professional Services, Inc.**  
 7699 Anagram Drive  
 Eden Prairie, MN 55344

PHONE 952-937-5150  
 FAX 952-937-5822  
 TOLL FREE 1-888-937-5150



\*Note: Crane paths are shown only in locations where their alignments are separate from roads and cable routes.

# Border Winds Energy Project

Rolette County, North Dakota  
 Final Project Layout  
 Updated August 9, 2010

**Legend**

- Project Boundary
- County Boundary
- PLS Township Boundary
- PLS Section Boundary
- State Highway
- County Roads
- Transmission Line

**Proposed Layout**

- Proposed Turbine
- Alternate Turbine
- Proposed Road
- Alternate Road
- Temporary Proposed Road
- Proposed Cable
- Alternate Cable
- Proposed Crane Path\*
- Alternative Crane Path
- Meteorological Tower
- Proposed Substation and Interconnection
- Proposed Construction Yard and O&M Facility

**Avoidance Areas**

- Municipality
- Woodland and Shelter Belt
- Watercourses
- Wetlands

**Exclusion Areas**

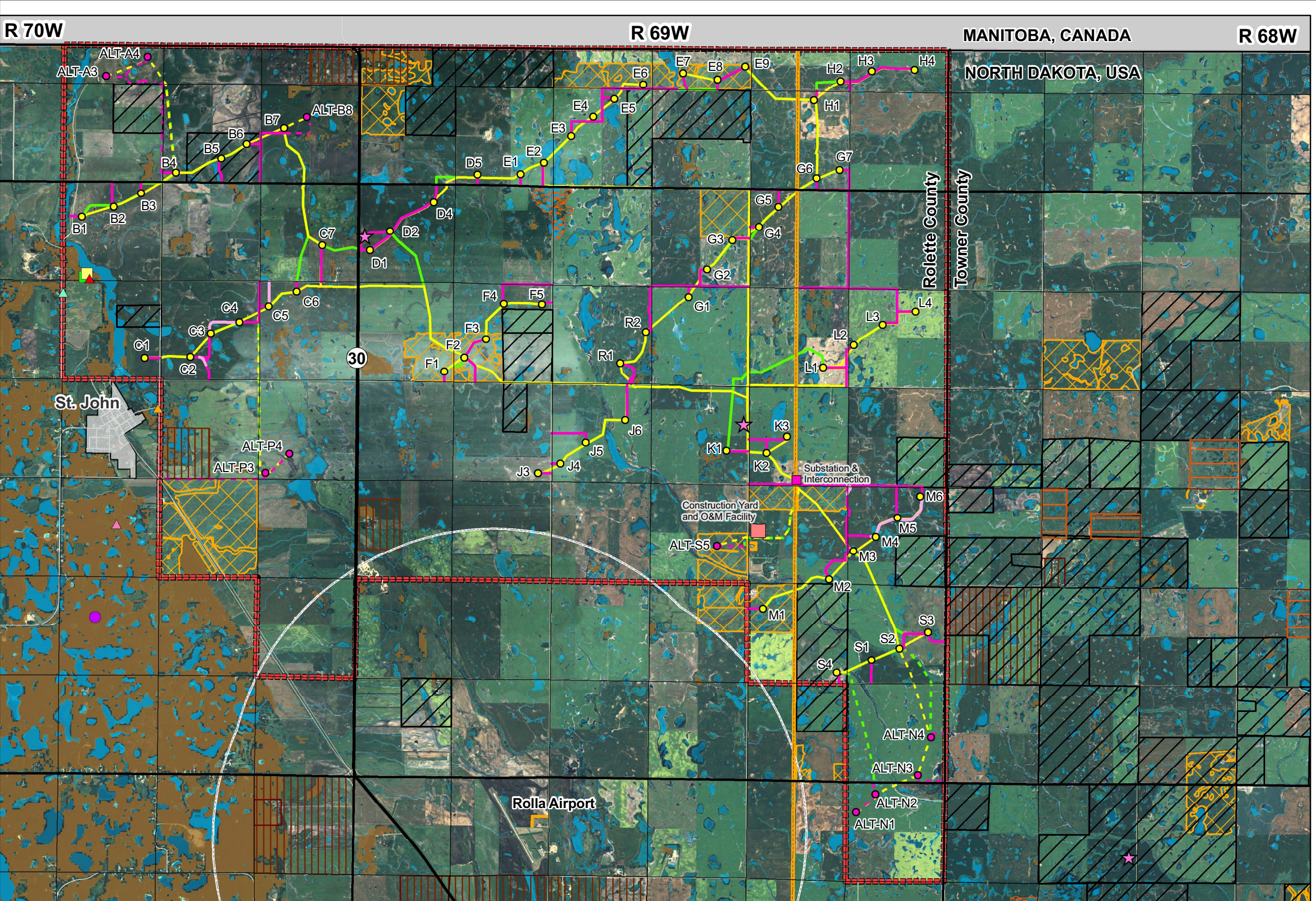
- Airport Height Limitation: Prohibits structures, on average, over 372 feet tall
- Cultural Resources (Historic and Archaeological Sites)
- North Dakota State Land Department

**Rare and Unique Natural Features**

- Aspen Woodland
- Calcareous Fen
- Tallgrass Prairie
- Few-flowered Spikerush
- Indianpipe
- Sheathed Pondweed
- Chestnut-sided Warbler

**Other Areas**

- Conservation Reserve Program
- USFWS Wetland Easement
- Potential Prairie



Data Source(s): The data used in this graphic has been obtained from sources deemed reliable. While every effort has been made to incorporate accurate data, Westwood cannot guarantee the accuracy. Westwood (2010); Sequoia (2010); 2005 USDA-FSA- APFO Digital Ortho Mosaic (2006); U.S. Department of Agriculture, Farm Service Agency (2008); US Fish and Wildlife Service (2008), Province Boundaries, ESRI Data (2005-2008), Muni Boundaries, NDDOT (2008), North Dakota Geologic Survey US PLS System (1994), Roads, NDDOT (2008); Airport Zone Map, Rolla Airport Zoning Board (2006); County Boundaries, North Dakota State Water Commission (2002); North Dakota Natural Heritage Inventory, North Dakota Parks and Recreation Department (2009); Westwood (2009); Sequoia Energy (2009); North Dakota State Land, ND Land Department (2002); USFWS Waterfowl Production Boundaries and USFWS Wetland Easement Boundaries, Dave Bolin and J. Clark Slayter WMD (2007); Conservation Reserve Program, USDA-FSA North Dakota State Office (2006); Woodland and Shelter Belt Area from USFWS, Refuges & Wildlife, Region 6 (2001), National Hydrography Dataset (NHD), USGS, US EPA, USDA Forest Service and other partners (various dates); USFWS, National Wetland Inventory (various dates).

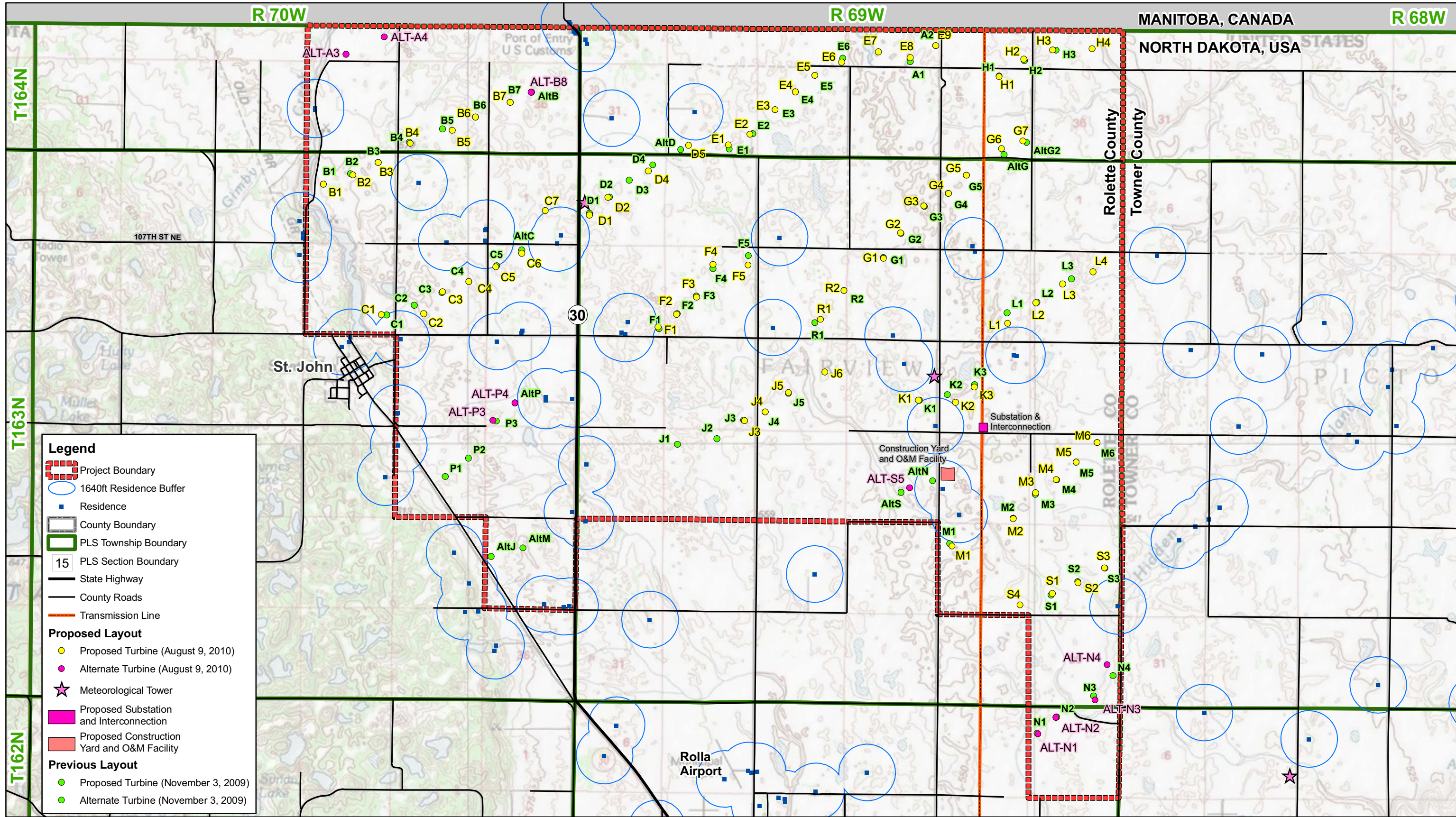
**Westwood**  
 7699 Anagram Drive  
 Eden Prairie, MN 55344  
 PHONE 952-937-5150  
 FAX 952-937-5822  
 TOLL FREE 1-888-937-5150



\*Note: Crane paths are shown only in locations where their alignments are separate from roads and cable routes.

# Border Winds Energy Project

Rolette County, North Dakota  
 Final Project Layout with Exclusion and Avoidance Areas  
 Updated August 9, 2010



**Legend**

- Project Boundary
- 1640ft Residence Buffer
- Residence
- County Boundary
- PLS Township Boundary
- 15 PLS Section Boundary
- State Highway
- County Roads
- Transmission Line

**Proposed Layout**

- Proposed Turbine (August 9, 2010)
- Alternate Turbine (August 9, 2010)
- Meteorological Tower
- Proposed Substation and Interconnection
- Proposed Construction Yard and O&M Facility

**Previous Layout**

- Proposed Turbine (November 3, 2009)
- Alternate Turbine (November 3, 2009)

Data Source(s): The data used in this graphic has been obtained from sources deemed reliable. While every effort has been made to incorporate accurate data, Westwood cannot guarantee the accuracy. Westwood (2010); ESRI NGS WMS USGS Topography (various dates); Province Boundaries, ESRI Data (2005-2008), Muni Boundaries, NDDOT (2008), North Dakota Geographic Survey US PLS System (1994), Roads, NDDOT (2008); County Boundaries, North Dakota State Water Commission (2002); Sequoia Energy (2010).

Westwood Professional Services, Inc.  
7699 Anagram Drive  
Eden Prairie, MN 55344

PHONE 952-937-5150  
FAX 952-937-5822  
TOLL FREE 1-888-937-5150

www.westwoodps.com



Note: Some turbines proposed on November 3, 2009 may not be visible because they remained in the same location or just moved slightly and can't be seen under the new turbine layout.

# Border Winds Energy Project

Rolette County, North Dakota  
Turbine Location Adjustments  
Between November 3, 2009 and August 9, 2010  
EXHIBIT 3

Map Document: P:\20071163\gis\psc7\20071163urb07E.mxd 8/10/2010 2:53:24 PM