

# Aircraft Detection Lighting System Installations At Courtenay & Border Winds Facilities

## Request for Extension of Installation Deadline

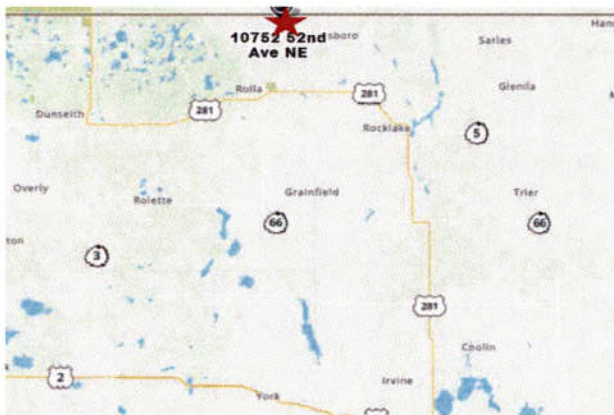
Case Nos. PU-08-797, PU-17-362 (Border Winds)

Case Nos. PU-13-64, PU-15-174 (Courtenay)

North Dakota Public Service Commission  
Formal Hearing  
Nov. 2, 2021

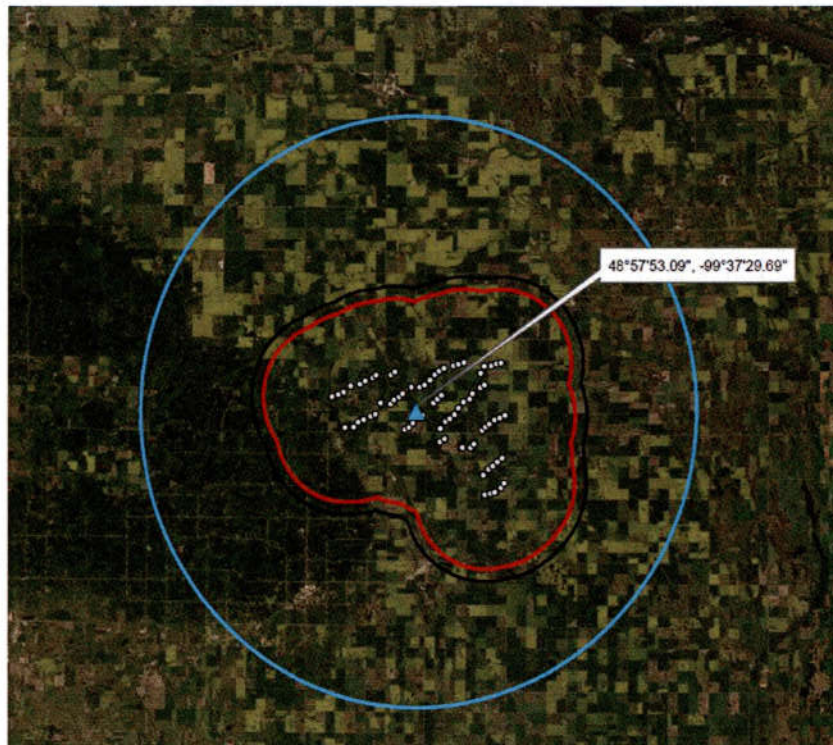
113	PU-15-174	Filed 11/02/2021	Pages: 9
	Formal Hearing Presentation Northern States Power Company		
91	PU-13-64	Filed 11/02/2021	Pages: 9
	Formal Hearing Presentation Northern States Power Company		
34	PU-17-362	Filed 11/02/2021	Pages: 9
	Formal Hearing Presentation Northern States Power Company		
129	PU-08-797	Filed 11/02/2021	Pages: 9
	Formal Hearing Presentation Northern States Power Company		

# Border Winds Facility



- Location: Rollete County, north of Rolla, ND
- Commercial Operation: Dec. 2015
- Wind Farm Capacity: 150 MW
- No. of Turbines: 75
- Turbine Type: Vestas V100-2.0MW
- 2020 Wind Capacity: 51 percent

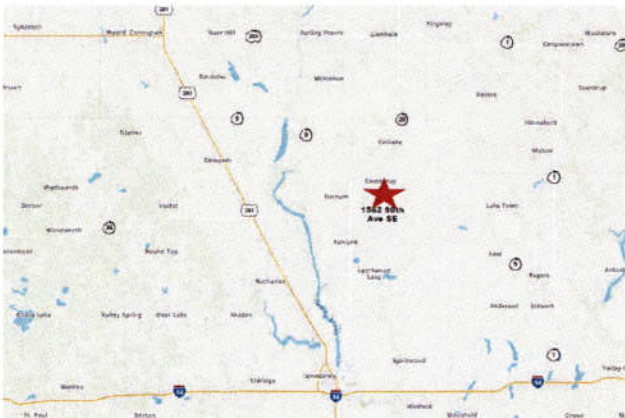
# Border Winds ADLS Project Scope



- Vendor: DeTect, Inc.
- 1 X 80-foot-high radar tower
- 55 FAA Lights with LCM
- Access Road
- Equipment Compound
- Fiber Optics/Power
- Approx. 9 months

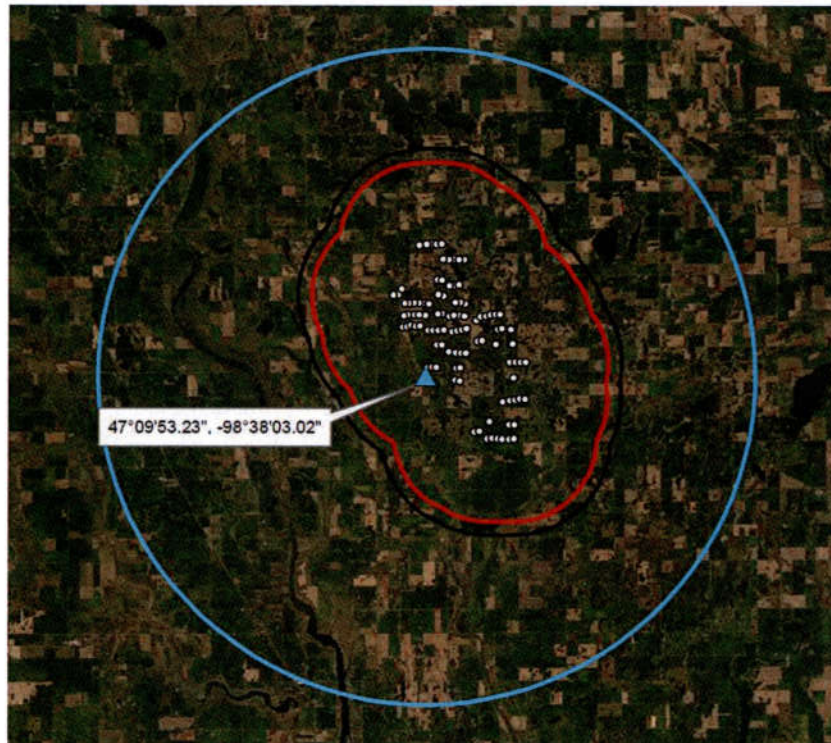
\* LCM (Light Control Modules)

# Courtenay Wind Facility



- Location: Stutsman County, south of Courtenay, ND
- Commercial Operation: Dec. 2016
- Wind Farm Capacity: 200 MW
- No. of Turbines: 100
- Turbine Type: Vestas V100-2.0MW
- 2020 Capacity Factor: 41 percent

## Courtenay ADLS Project Scope



- Vendor: DeTect, Inc.
- 1 x 50-foot-high radar tower
- 63 LCMs
- Access Road
- Equipment Compound
- Fiber Optics/Power
- Approx. 9 months

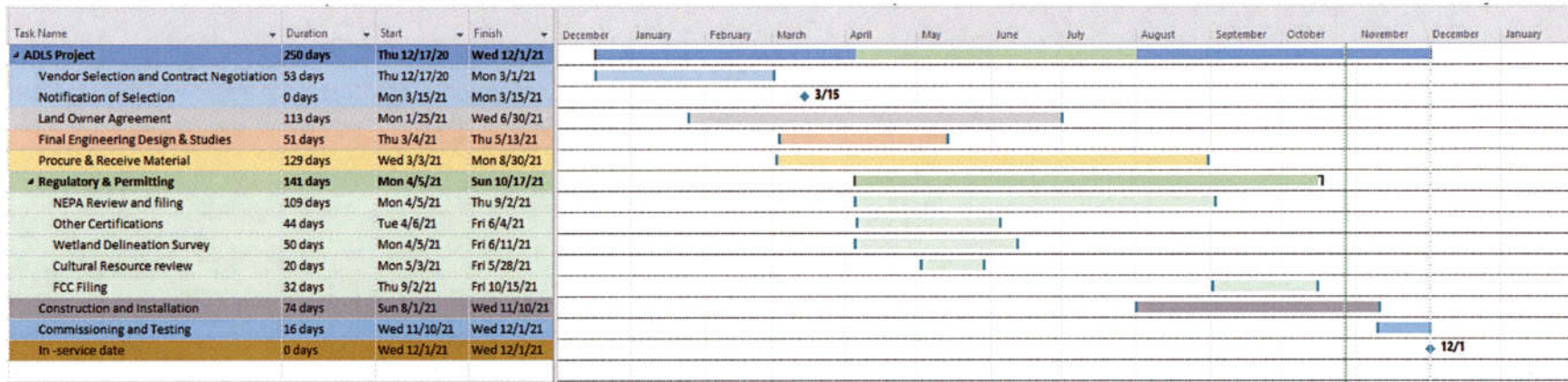
# Original Schedule

Task Name	Duration	Start	Finish	December	January	February	March	April	May	June	July	August	September	October	November	December	January			
<b>ADLS Project</b>	<b>250 days</b>	<b>Thu 12/17/20</b>	<b>Wed 12/1/21</b>	[Gantt bar spanning Dec 2020 to Jan 2021]																
Vendor Selection and Contract Negotiation	53 days	Thu 12/17/20	Mon 3/1/21	[Gantt bar from Dec 17, 2020 to Mar 1, 2021]																
Notification of Selection	0 days	Mon 3/15/21	Mon 3/15/21	[Point marker at 3/15]																
Land Owner Agreement	113 days	Mon 1/25/21	Wed 6/30/21	[Gantt bar from Jan 25, 2021 to Jun 30, 2021]																
Final Engineering Design & Studies	51 days	Thu 3/4/21	Thu 5/13/21	[Gantt bar from Mar 4, 2021 to May 13, 2021]																
Procure & Receive Material	129 days	Wed 3/3/21	Mon 8/30/21	[Gantt bar from Mar 3, 2021 to Aug 30, 2021]																
<b>Regulatory &amp; Permitting</b>	<b>141 days</b>	<b>Mon 4/5/21</b>	<b>Sun 10/17/21</b>	[Gantt bar spanning Apr 5, 2021 to Oct 17, 2021]																
NEPA Review and filing	109 days	Mon 4/5/21	Thu 9/2/21	[Gantt bar from Apr 5, 2021 to Sep 2, 2021]																
Other Certifications	44 days	Tue 4/6/21	Fri 6/4/21	[Gantt bar from Apr 6, 2021 to Jun 4, 2021]																
Wetland Delineation Survey	50 days	Mon 4/5/21	Fri 6/11/21	[Gantt bar from Apr 5, 2021 to Jun 11, 2021]																
Cultural Resource review	20 days	Mon 5/3/21	Fri 5/28/21	[Gantt bar from May 3, 2021 to May 28, 2021]																
FCC Filing	32 days	Thu 9/2/21	Fri 10/15/21	[Gantt bar from Sep 2, 2021 to Oct 15, 2021]																
Construction and Installation	74 days	Sun 8/1/21	Wed 11/10/21	[Gantt bar from Aug 1, 2021 to Nov 10, 2021]																
Commissioning and Testing	16 days	Wed 11/10/21	Wed 12/1/21	[Gantt bar from Nov 10, 2021 to Dec 1, 2021]																
In-service date	0 days	Wed 12/1/21	Wed 12/1/21	[Point marker at 12/1]																

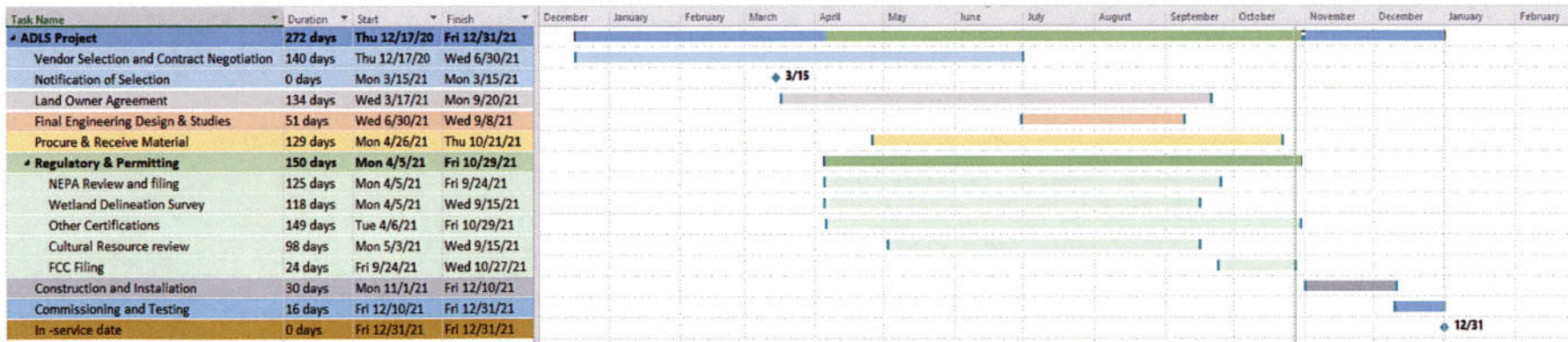
\*Original schedule assumed for both projects, assumed to be constructed in parallel

# Schedule Comparison (Border Winds)

## Original

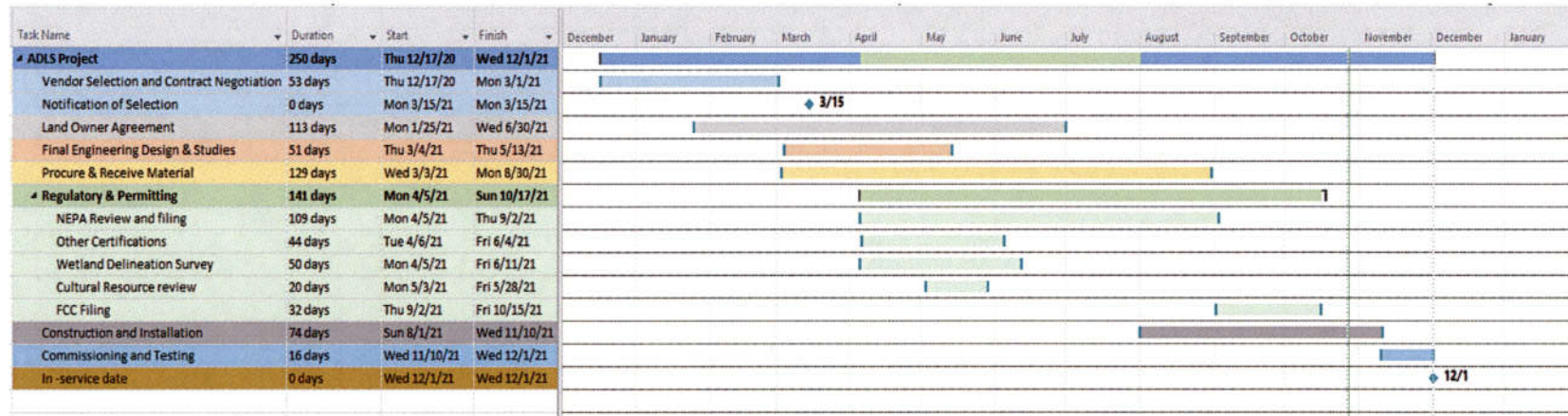


## Updated

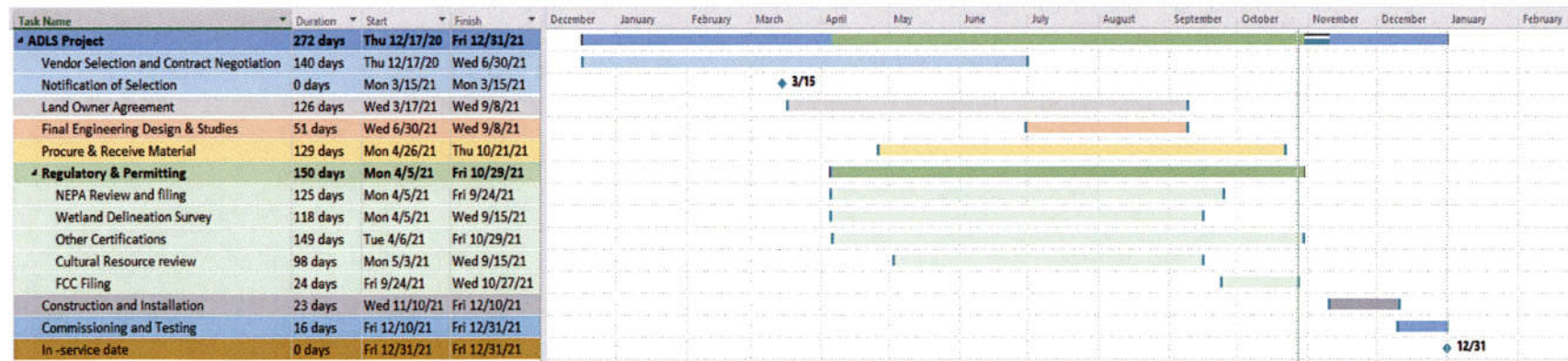


# Schedule Comparison (Courtenay)

Original



Updated



## Reasons for Extension

- Landowner concerns with radar/access road location
  - Delayed NEPA review
  - Delayed construction start date
- Supply chain concerns
  - Transformer shortage
  - COVID-19 pandemic affected the shipments
- Labor shortages
- Cold/wet weather is a concern