

LAW OFFICES OF  
**FLECK, MATHER & STRUTZ, LTD.**

400 East Broadway, Suite 600, Wells Fargo Bank Building

P. O. Box 2798, Bismarck, North Dakota 58502

Telephone: 701-223-6585 Facsimile: 701-223-4853 E-Mail: fms@flecklaw.com Website: www.flecklaw.com

GARY R. WOLBERG+  
PAUL W. SUMMERS  
BRIAN R. BJELLA\*\*  
JOHN W. MORRISON  
CURTIS L. WIKE\*\*  
CRAIG C. SMITH^

ALSO LICENSED IN:

+ Iowa  
\* Minnesota  
o Montana  
□ Nebraska  
• South Dakota  
▼ Texas  
^ Wyoming

RECEIVED  
OCT 27 2008

PUBLIC SERVICE COMMISSION

October 27, 2008

SHANE A. HANSON\*  
MICHAEL C. WALLER°  
PETRA H. MANDIGO□  
CHRISTOPHER D. FRIEZ  
CRAIG B. BURNS▼  
WADE C. MANN\*

ERNEST R. FLECK  
(1921-1995)  
RUSSELL R. MATHER  
(RETIRED)  
WILLIAM A. STRUTZ  
(RETIRED)

**Hand Delivered**

Mr. Darrell Nitschke  
Executive Secretary  
North Dakota Public Service Commission  
600 East Boulevard Avenue  
Dept. 408  
Bismarck, ND 58505-0480

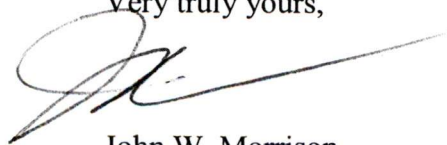
In re: Whiting Oil and Gas Corporation

Dear Mr. Nitschke:

Please find enclosed the original plus 10 copies of two letters of intent for Whiting Oil and Gas Corporation relating to an oil pipeline and natural gas pipeline.

If you have any questions, please advise.

Very truly yours,



John W. Morrison

mw  
Enc.  
cc: Bill Regan  
Brent Miller

LAW OFFICES OF  
**FLECK, MATHER & STRUTZ, LTD.**

400 East Broadway, Suite 600, Wells Fargo Bank Building  
P. O. Box 2798, Bismarck, North Dakota 58502

Telephone: 701-223-6585 Facsimile: 701-222-4853 E-Mail: fms@flecklaw.com Website: www.flecklaw.com

GARY R. WOLBERG+  
PAUL W. SUMMERS  
BRIAN R. BJELLA<sup>o\*</sup>  
JOHN W. MORRISON  
CURTIS L. WIKE<sup>o\*</sup>  
CRAIG C. SMITH<sup>o^</sup>

SHANE A. HANSON\*  
MICHAEL C. WALLER<sup>o</sup>  
PETRA H. MANDIGO<sup>o</sup>  
CHRISTOPHER D. FRIEZ  
CRAIG B. BURNS\*  
WADE C. MANN\*

ALSO LICENSED IN:

+ Iowa  
\* Minnesota  
<sup>o</sup> Montana  
<sup>o</sup> Nebraska  
• South Dakota  
▼ Texas  
^ Wyoming

October 27, 2008

ERNEST R. FLECK  
(1921-1995)  
RUSSELL R. MATHER  
(RETIRED)  
WILLIAM A. STRUTZ  
(RETIRED)

**Hand Delivered**

Mr. Darrell Nitschke  
Executive Secretary  
North Dakota Public Service Commission  
600 East Boulevard Avenue  
Dept. 408  
Bismarck, ND 58505-0480

In re: Whiting Oil and Gas Corporation  
Oil Pipeline

Dear Mr. Nitschke:

Pursuant to Section 49-22-07.1 of the North Dakota Century Code and Section 69-06-03-01 of the North Dakota Administrative Code, Whiting Oil and Gas Corporation (“Whiting”), hereby files its letter of intent to site, construct, and operate a crude oil pipeline in Mountrail County, North Dakota.

**1. Description of size and type of facility and area to be served.**

Whiting owns a working interest in and operates a number of oil and gas wells in the Mountrail County area of North Dakota, principally in the Sanish-Bakken field. Oil produced in the area is currently trucked to an Enbridge Pipelines facility located south and east of the town of Stanley. Whiting has recently constructed the Robinson Lake Gas Processing Plant (the “Plant”) in the area, including a natural gas pipeline used to deliver residue gas from the Plant to an interconnection with a Williston Basin Interstate Pipeline Company in Section 26, Township 156 North, Range 91 West. Applicant desires to construct and operate a crude oil pipeline from a storage site near the Plant where pressure will be increased to an Enbridge Pipelines facility in Section 27, Township 156 North, Range 91 West. The pipeline will be a 17-mile 8 inch pipeline and will parallel the gas pipeline from the Plant to its point of interconnection with the Williston

Basin Interstate Pipeline Company transmission line, maintaining a twelve to twenty foot offset from the gas pipeline.

Whiting hereby requests that the Commission waive the requirement of filing a letter of intent at least one year prior to filing an application for a certificate of corridor compatibility. Whiting intends to file with its application for siting an application for waiver of procedures and time schedules including the requirements as to width of the corridor, and the requirement of separate corridor and route filings and hearings so as to allow this project to be timely sited. Whiting intends to file this consolidated application as soon as the necessary studies and reviews can be completed.

**2. Map of study area.**

See map enclosed herewith for the route of the oil pipeline. Whiting has conducted a desk study of a corridor one mile in width, located one-half mile on each side of the route. However, because the oil pipeline will be constructed parallel to a gas pipeline which has already been constructed, Whiting has largely limited field studies to a corridor 120 foot in width, located 60 foot on either side of the route, except that to the extent that the field studies identified any exclusion or avoidance areas or selection criteria within the 120-foot corridor, the corridor was widened as necessary to provide sufficient information to the Commission to fully assess the impact of such factors.

**3. Anticipated construction and operation schedule.**

To facilitate marketing of crude oil produced as a result of the recent Bakken activity in Mountrail County and minimize the expense, burden to roads and local infrastructure, and nuisance of unnecessary truck traffic, Whiting would like to construct this pipeline before the winter season, starting in early November, 2008 if possible.

**4. Estimated cost of construction.**

Whiting anticipates that the total cost of constructing the oil pipeline will be \$6.1 million.

If you have any questions or need any additional information, please contact the undersigned at your earliest convenience.

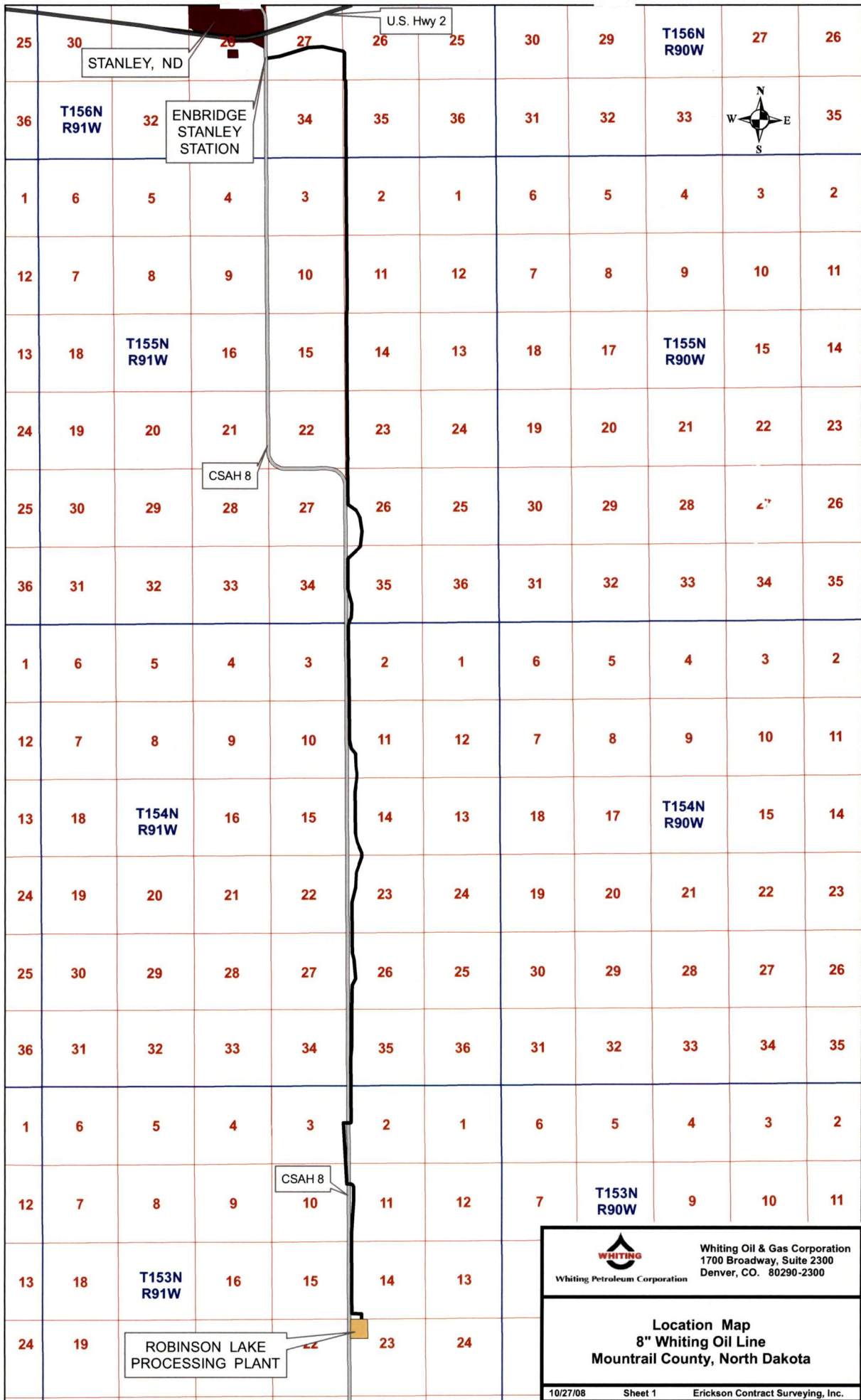
Very truly yours,  
Fleck, Mather & Strutz, Ltd.  
Counsel for Whiting Oil and Gas Corporation



---

By: John W. Morrison

cc: Brent Miller



**WHITING**  
Whiting Petroleum Corporation

Whiting Oil & Gas Corporation  
1700 Broadway, Suite 2300  
Denver, CO. 80290-2300

**Location Map**  
**8" Whiting Oil Line**  
**Mountrail County, North Dakota**

10/27/08      Sheet 1      Erickson Contract Surveying, Inc.