

RECEIVED

May 12, 2010

MAY 12 2010

Hand Delivered

PUBLIC SERVICE COMMISSION

Mr. Darrell Nitschke
Executive Secretary
North Dakota Public Service Commission
600 East Boulevard Avenue
Dept. 408
Bismarck, ND 58505-0480

In re: Whiting Oil and Gas Corporation
Case No. PU-08-844 Supplemental Information Filing, As-Built Alignments

Dear Mr. Nitschke:

Whiting Oil and Gas Corporation (Whiting) received a Certificate of Corridor Compatibility (Number 109) and Route Permit (Number 119) from the Public Service Commission on February 25, 2009, for construction of a 17.8 mile, eight-inch diameter crude oil pipeline from its Robinson Lake Processing Plant to an existing Enbridge Pipelines (North Dakota) LLC facility southeast of the town of Stanley, North Dakota.

As required by condition number 24 of the Order, Whiting submits the attached facility alignment drawings showing the location of the as-built facilities for the pipeline. Copies are provided in both hardcopy and electronic versions.

If you have any questions or need any additional information, please contact the undersigned at your earliest convenience.

Sincerely,
Crowley Fleck PLLP
Counsel for Whiting Oil and Gas Corporation

By: John W. Morrison

Enclosures: As-Built Alignment Sheets – in hard copy, pdf and GIS formats
cc: Brent Miller, Whiting

OWNERSHIP *SEE ALIGNMENT VIEW	Ken Littlefield SW1/4, Sec. 14, T153N, R91W Total Footage = 3060'	Dayrl & Pam Loken NW1/4, Sec. 14, T153N, R91W Total Footage = 2646'	Dayrl & Pam Loken SW1/4, Sec. 11, T153N, R91W Total Footage = 2644'	Lyle & Ramona Loken S1/2 NW1/4, Sec. 11, T153N, R91W Total Footage = 1415'	Dayrl & Pam Loken NE1/4 NE1/4, Sec. 10, T153N, R91W Total Footage = 1316'	Robert & LaVonne Patten SE1/4, Sec. 3, T153N, R91W Total Footage = 2641'	Lyle & Ramona Loken W1/2 NW1/4, Sec. 2, T153N, R91W Total Footage = 2562'	Daryl & Pam Loken W1/2 SW1/4, Sec. 35, T154N, R91W Total Footage = 2646'	Dane Arndt NW1/4, Sec. 35, T154N, R91W Total Footage = 2644'	Emojean Jorgenson, etal W1/2 W1/2, Sec. 26, T154N, R91W Total Footage = 5360'	
RODDAGE	5	186	160	86	80	160	155	160	160	325	
STATION DESCRIPTION	Sta = 0+35 Begin Pipeline	Sta = 3+74 1/4 Sec. Line Sta = 5+04 P.I. 1203 LT Sta = 3+98 P.I. 525 LT Sta = 1+14 Section Line	Sta = 31+74 1/4 Sec. Line	Sta = 48+86 P.I. 0+08 RT	Sta = 57+19 Begin Bore Sta = 57+87 CR ROW Sta = 58+20 Section Line Sta = 58+93 CR ROW Sta = 59+78 P.I. 413 RT Sta = 64+64 1/4 Sec. Line Sta = 68+97 End Bore Sta = 68+53 CR ROW Sta = 68+20 Section Line Sta = 67+87 CR ROW Sta = 67+19 Begin Bore	Sta = 101+44 1/6 Sec. Line Sta = 101+42 CR ROW Sta = 101+15 P.I. 3721 RT Sta = 101+15 P.I. 3721 RT Sta = 100+66 P.I. 4759 RT Sta = 100+64 P.I. 4759 RT Sta = 100+80 OHP X-119 Sta = 100+80 HWY ROW Sta = 98+79 Section Line Sta = 98+79 HWY ROW Sta = 98+49 OHP X-119 Sta = 98+49 HWY ROW Sta = 98+12 Begin Bore Sta = 98+36 P.I. 1028 LT Sta = 97+93 P.I. 2051 LT Sta = 97+30 P.I. 1026 LT Sta = 96+65 P.I. 1842 LT Sta = 95+99 P.I. 1842 LT Sta = 95+34 P.I. 820 LT Sta = 94+28 P.I. 550 LT Sta = 87+28 P.I. 414 LT Sta = 84+64 1/4 Sec. Line Sta = 84+76 P.I. 413 RT Sta = 68+97 End Bore Sta = 68+53 CR ROW Sta = 68+20 Section Line Sta = 67+87 CR ROW Sta = 67+19 Begin Bore	Sta = 145+90 P.I. 3229 LT Sta = 145+41 P.I. 5730 LT Sta = 145+02 OHP X-119 Sta = 144+77 Section Line Sta = 144+77 HWY ROW Sta = 142+77 Section Line Sta = 142+77 HWY ROW Sta = 142+38 P.I. 5739 RT Sta = 141+01 1/4 Sec. Line	Sta = 189+56 P.I. 5390 RT	Sta = 198+73 P.I. 523 LT Sta = 208+65 P.I. 0290 RT	Sta = 223+54 End Bore Sta = 223+50 CR ROW Sta = 223+17 Section Line Sta = 222+84 CR ROW Sta = 222+65 P.I. 214 RT Sta = 222+65 Begin Bore	Sta = 240+50 P.I. 1402 RT Sta = 237+73 P.I. 211 LT

ALIGNMENT DRAWING										
HORIZONTAL SCALE:	1" = 1000'									
PROFILE VIEW DRAWING										
HORIZONTAL SCALE:	1" = 1000'									
VERTICAL SCALE:	1" = 100'									
PIPELINE CORRIDOR	60' TOTAL WIDTH									

PIPELINE LEGEND	<ul style="list-style-type: none"> PLSS Monument - Found PLSS Monument - Not Found Existing Pipeline Existing Fence OHP - Existing Overhead Power Line Tele - Existing Underground Telephone Block Valve Area Valve MP 1 - Mile Post Eq - Station Equation Cathodic Test Station Bore Location P.I. Location Highway Right-of-Way Check Valve Relief Valve Meter Station P/L Warning Sign 						
PIPELINE MATERIAL	<table border="1"> <thead> <tr> <th>STATION</th> <th>PIPE SIZE</th> <th>PIPE DETAILS</th> </tr> </thead> <tbody> <tr> <td>0+00 to 240+00</td> <td>8" Steel</td> <td></td> </tr> </tbody> </table>	STATION	PIPE SIZE	PIPE DETAILS	0+00 to 240+00	8" Steel	
STATION	PIPE SIZE	PIPE DETAILS					
0+00 to 240+00	8" Steel						

PROJECT REVISIONS	DESCRIPTION	BY:	DATE:	REV. NO.

PROJECT DETAILS

WHITING PETROLEUM CORPORATION
SOUTH ROBINSON GAS PLANT TO NEXEN FACILITY
8" STEEL OIL DISCHARGE LINE
0+35 TO 240+00
SECTIONS 2, 3, 10, 11, 14 & 23, T153N, R91W
SECTIONS 26 & 35, T154N, R91W
MOUNTAIN COUNTY, NORTH DAKOTA

SURVEYING & DRAFTING SERVICES PROVIDED BY:

ECS INC.
ERICKSON CONTRACT SURVEYING
333 10th Ave. SE Sidney, Montana
Office 406-482-8806 / Fax 406-482-8800

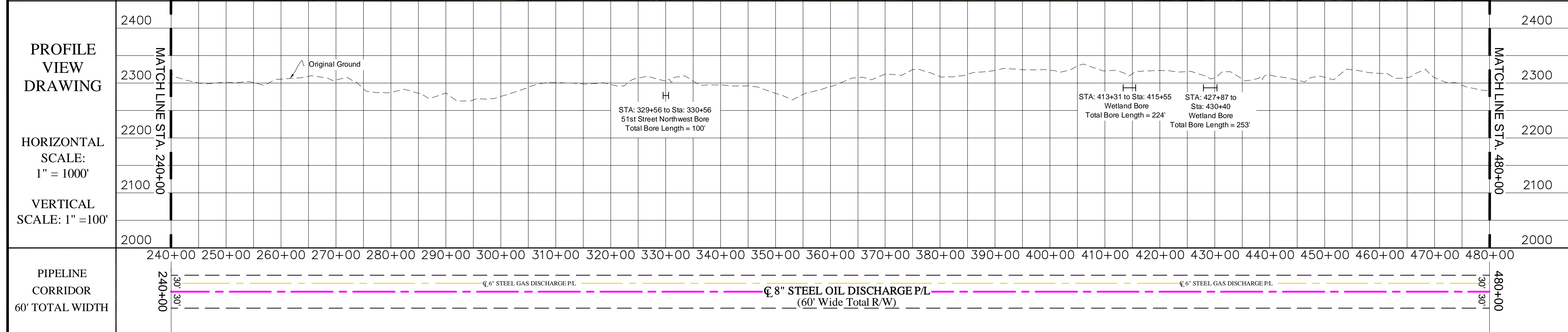
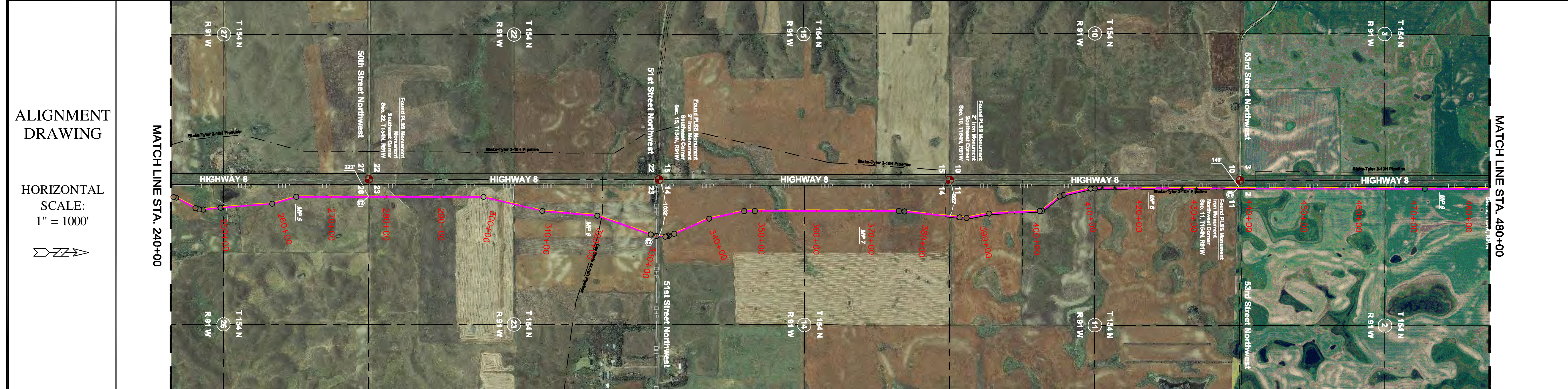
ECS PROJECT #2009-680

Surveyed By: Cundiff / Tofte
Date Surveyed: August 2009
Drawn By: F.Syth / D. Sletvold
Date Drawn: October 2009
Approved By: Mike Madler
Approval Date:

Whiting Petroleum Corporation

Sheet No. 1 of 4

OWNERSHIP *SEE ALIGNMENT VIEW	Emojean Jorgenson, etal W1/2 W1/2, Sec. 26, T154N, R91W Total Footage = 5360'	John Jr. & Vaughn Niematalo SW1/4, Sec. 23, T154N, R91W Total Footage = 2657'	Emojean Jorgenson, etal NW1/4, Sec. 23, T154N, R91W Total Footage = 2722'	Doug Kinnion W1/2 W1/2, Sec. 14, T154N, R91W Total Footage = 5375'	John Niematalo Sr. S1/2 SW1/4, Sec. 11, T154N, R91W Total Footage = 1331'	John Niematalo Sr. NW1/4, Sec. 11, T154N, R91W Total Footage = 2639'	James Carkuff SW1/4, Sec. 2, T154N, R91W Total Footage = 2641'	Ed & Diane Moen NW1/4, Sec. 2, T154N, R91W Total Footage = 2632'	
RODDAGE	325	161	165	326	81	87	160	160	
STATION DESCRIPTION	Sia = 250+66 Fence X-Ing Sia = 249+59 P.I. 1.551' RT Sia = 246+41 P.I. 8.24' RT Sia = 245+69 P.I. 1.717' LT Sia = 244+98 P.I. 8.43' LT Sia = 240+98 P.I. 14.02' RT Sia = 240+80 P.I. 14.02' RT	Sia = 281+81 Fence X-Ing Sia = 276+97 Fence X-Ing Sia = 276+77 Section Line Sia = 276+59 Fence X-Ing	Sia = 308+63 P.I. 8.25' LT Sia = 303+34 1/4 Sec. Line Sia = 303+28 Fence X-Ing Sia = 297+66 P.I. 13.19' RT	Sia = 348+79 P.I. 0.47' RT Sia = 346+84 P.I. 11.26' RT Sia = 340+33 P.I. 11.14' RT Sia = 333+39 P.I. 5.22' LT Sia = 332+29 P.I. 1.57' LT Sia = 331+18 P.I. 19.38' LT Sia = 331+18 UG Tele X-Ing Sia = 330+89 CR ROW Sia = 330+89 ENL ROW Sia = 330+23 CR ROW Sia = 330+23 Section Line Sia = 330+11 P.I. 10.44' LT Sia = 329+56 OHP X-Ing Sia = 329+56 Begin Bore Sia = 319+54 P.I. 5.22' LT Sia = 319+54 P.L. X-Ing Sia = 318+71 P.I. 14.37' RT	Sia = 391+56 P.I. 8.47' RT Sia = 387+47 P.I. 15.56' LT Sia = 386+41 P.I. 1.39' LT Sia = 384+31 Section Line Sia = 383+49 P.L. X-Ing	Sia = 378+01 P.I. 1.44' RT Sia = 374+98 P.I. 4.24' RT	Sia = 415+55 End Bore Sia = 413+37 Begin Bore Sia = 411+94 1/4 Sec. Line Sia = 411+14 P.I. 9.38' RT Sia = 406+11 P.I. 11.22' RT Sia = 405+34 P.I. 14.24' RT Sia = 401+24 P.I. 29.18' LT Sia = 400+78 P.I. 1.12' LT Sia = 397+82 1/8 Sec. Line	Sia = 441+12 P.L. X-Ing Sia = 438+66 CR ROW Sia = 438+33 Section Line Sia = 438+00 CR ROW	Sia = 472+00 P.I. 0.08' LT



PIPELINE CORRIDOR 60' TOTAL WIDTH	240+00 250+00 260+00 270+00 280+00 290+00 300+00 310+00 320+00 330+00 340+00 350+00 360+00 370+00 380+00 390+00 400+00 410+00 420+00 430+00 440+00 450+00 460+00 470+00 480+00	<p>PIPELINE LEGEND</p> <ul style="list-style-type: none"> PLSS Monument - Found PLSS Monument - Not Found Existing Pipeline Existing Fence Existing Overhead Power Line Existing Underground Telephone Block Valve Area Valve Mile Post Station Equation Cathodic Test Station Bore Location P.I. Location Highway Right-of-Way Check Valve Relief Valve Meter Station P/L Warning Sign 	<p>PIPELINE MATERIAL</p> <table border="1"> <tr> <th>STATION</th> <th>PIPE SIZE</th> <th>PIPE DETAILS</th> </tr> <tr> <td>240+00 to 480+00</td> <td>8" Steel</td> <td></td> </tr> </table>	STATION	PIPE SIZE	PIPE DETAILS	240+00 to 480+00	8" Steel	
STATION	PIPE SIZE	PIPE DETAILS							
240+00 to 480+00	8" Steel								

PROJECT REVISIONS

NO.	DESCRIPTION	BY	DATE	REV. NO.

PROJECT DETAILS

WHITING PETROLEUM CORPORATION
SOUTH ROBINSON GAS PLANT TO NEXEN FACILITY
8" STEEL OIL DISCHARGE LINE
240+00 TO 480+00
SECTIONS 2, 11, 14, 23, & 26, T154N, R91W
MOUNTAIN COUNTY, NORTH DAKOTA

SURVEYING & DRAFTING SERVICES PROVIDED BY:

ECS INC.
ERICKSON CONTRACT SURVEYING
333 10th Ave. SE Sidney, Montana
Office 406-482-8806 / Fax 406-482-8800

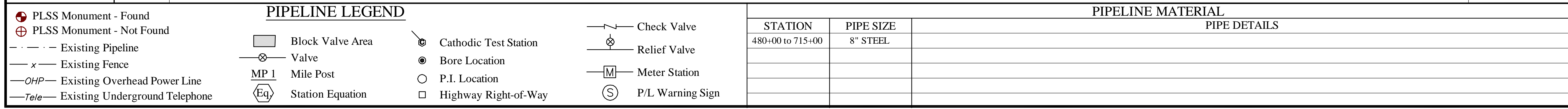
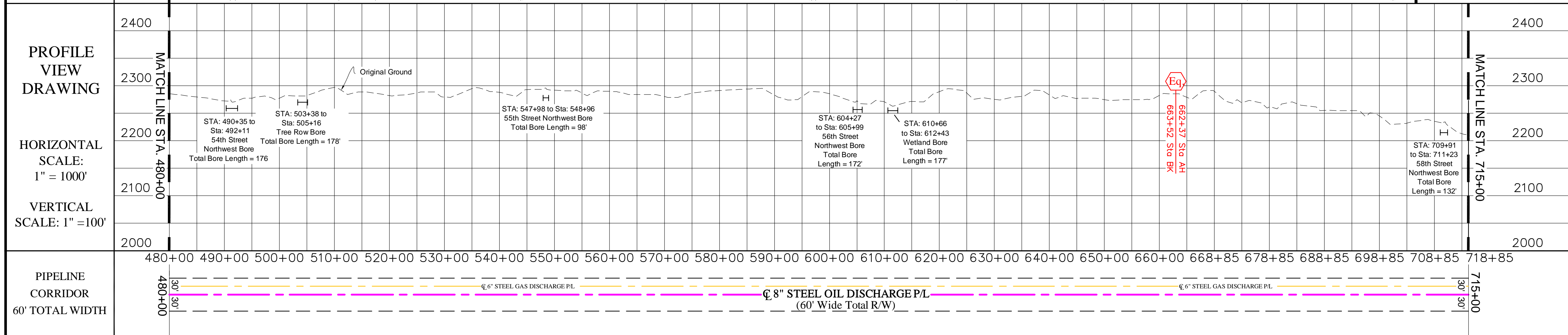
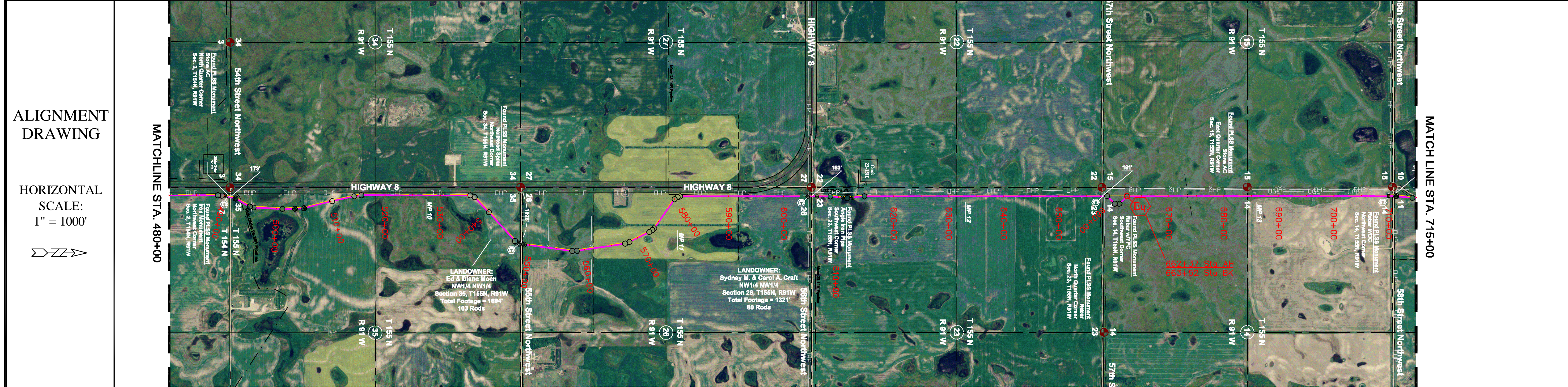
ECS PROJECT #2009-680

Surveyed By: Cundiff / Tofte
Date Surveyed: August 2009
Drawn By: F. Syth / D. Sletvold
Date Drawn: October 2009
Approved By: Mike Madler
Approval Date:

Whiting Petroleum Corporation

Sheet No. 2 of 4

OWNERSHIP *SEE ALIGNMENT VIEW	Marshall Craft W1/2 SW1/4, Sec. 35, T155N, R91W Total Footage = 2711'	Ed & Diane Moon SW1/4 SW1/4, Sec. 26, T155N, R91W Total Footage = 1333'	Michael & Shelly Craft NW1/4 SW1/4 & SW1/4 NW1/4, Sec. 26, T155N, R91W Total Footage = 3009'	Sydney M. & Carol A. Craft NW1/4 NW1/4, Sec. 26, T155N, R91W Total Footage = 1321'	Warren D. Craft W1/2 W1/2, Sec. 23, T155N, R91W Total Footage = 5286'	Marie Harstad, Living Estate SW1/4, Sec. 14, T155N, R91W Total Footage = 2752'	John & Kathryn Sauber NW1/4, Sec. 14, T155N, R91W Total Footage = 2640'	710+59		
RODDAGE	164	80	103	81	182	80	320	167	160	710+59
STATION DESCRIPTION	Sta = 518+17 1/4 Sec. Line Sta = 516+31 UG Tele X-Ing Sta = 515+89 P.I. 8.14 RT Sta = 514+39 P.I. 4.09 RT Sta = 513+02 P.I. 2.09 RT Sta = 503+98 Begin Bore Sta = 503+31 P.I. 1.25 LT Sta = 501+03 P.I. 4.06 LT Sta = 495+82 P.I. 9.28 LT Sta = 495+42 OHP X-Ing Sta = 495+09 P.I. 17.91 LT Sta = 492+11 End Bore Sta = 491+43 Fence X-Ing Sta = 491+30 CR ROW Sta = 490+95 Section Line Sta = 489+52 P.I. 10.27 RT Sta = 488+84 P.I. 11.53 RT	Sta = 531+39 Total Footage = 1322'	Sta = 561+66 Sta = 558+64 P.I. 8.00 LT Sta = 556+18 P.I. 19.11 LT Sta = 553+34 UG Tele X-Ing Sta = 553+24 UG Tele X-Ing Sta = 548+98 P.I. 9.00 RT Sta = 548+96 End Bore Sta = 548+75 CR ROW Sta = 548+33 Section Line Sta = 547+59 P.I. 6.05 LT Sta = 547+14 P.I. 6.05 LT Sta = 540+09 B.P. 1.14 RT Sta = 539+32 P.I. 23.54 RT Sta = 538+47 P.I. 23.34 RT Sta = 531+39 1/16 Sec. Line	Sta = 591+75 1/16 Sec. Line	Sta = 604+96 Sta = 604+93 CR ROW Sta = 604+49 CR ROW Sta = 604+21 Begin Bore	Sta = 657+82 Sta = 658+15 CR ROW Sta = 657+82 Section Line Sta = 657+49 CR ROW	Sta = 684+19 1/4 Sec. Line	Sta = 710+59 CR ROW Sta = 710+26 CR ROW Sta = 709+91 Begin Bore	Sta = 714+23 P.I. 6.32 RT Sta = 711+23 End Bore Sta = 711+06 OHP X-Ing Sta = 710+94 UG Tele X-Ing Sta = 710+59 Section Line Sta = 710+26 CR ROW Sta = 709+91 Begin Bore	



PIPELINE LEGEND	
⊕ PLSS Monument - Found	⊖ PLSS Monument - Not Found
--- Existing Pipeline	x Existing Fence
--- OHP Existing Overhead Power Line	--- Tele Existing Underground Telephone
█ Block Valve Area	⊗ Valve
MP 1 Mile Post	Eq Station Equation
⊙ Cathodic Test Station	● Bore Location
○ P.I. Location	□ Highway Right-of-Way
⊏ Check Valve	⊕ Relief Valve
⊞ Meter Station	⊙ P/L Warning Sign

PIPELINE MATERIAL		
STATION	PIPE SIZE	PIPE DETAILS
480+00 to 715+00	8" STEEL	

PROJECT REVISIONS		
REV. NO.	DATE	DESCRIPTION

PROJECT DETAILS
 WHITING PETROLEUM CORPORATION
 SOUTH ROBINSON GAS PLANT TO NEXEN FACILITY
 8" STEEL OIL DISCHARGE LINE
 480+00 TO 715+00
 SECTIONS 2, T154N, R91W &
 SECTIONS 11, 14, 23, 26 & 35, T155N, R91W
 MOUNTAIN COUNTY, NORTH DAKOTA

SURVEYING & DRAFTING SERVICES PROVIDED BY:

ECS INC.
 ERICKSON CONTRACT SURVEYING
 333 10th Ave. SE Sidney, Montana
 Office 406-482-8806 / Fax 406-482-8800

ECS PROJECT #2009-680

Surveyed By: Cundiff / Tofte
 Date Surveyed: August 2009
 Drawn By: F. Syth / D. Sletvold
 Date Drawn: October 2009
 Approved By: M. Madler
 Approval Date:

Whiting Petroleum Corporation

Sheet No. 3 of 4

