

Just Wind - Wind Farm Development Minnesota Division

500 Lake Street • Excelsior, Minnesota 55331 Phone (952) 401-7685 Fax (952) 401-7684

December 10, 2008

North Dakota Public Service Commission
Attn: Ilona A. Jeffcoat-Sacco, Executive Secretary
600 East Boulevard Avenue, Dept. 408
Bismarck, ND 58505-0480

RECEIVED

DEC 12 2008

PUBLIC SERVICE COMMISSION

RE: Letter of Intent

Dear Secretary Jeffcoat-Sacco,

Please find enclosed 11 originals of the Letter of Intent filing for the Emmons County Wind Farm project.

Sincerely,
Jeffrey L. Metzger
President
(612) 245-6608 Cell
jmetzger@just-wind.com

1

PU-08-931
Letter of Intent

Filed: 12/12/2008 Pages: 7

Just Wind, LLC

12/10/08



LETTER OF INTENT

**SUBMITTED BY:
JUST WIND, LLC.
500 LAKE STREET, #203
EXCELSIOR, MN 55331**

Just Wind - Wind Farm Development Minnesota Division

500 Lake Street • Excelsior, Minnesota 55331 Phone (952) 401-7685 Fax (952) 401-7684

December 10, 2008

North Dakota Public Service Commission
Attn: Ilona A. Jeffcoat-Sacco, Executive Secretary
600 East Boulevard Avenue, Dept. 408
Bismarck, ND 58505-0480

RE: Letter of Intent

Dear Secretary Jeffcoat-Sacco,

In accordance with the North Dakota Century Code 49-22-07.1, Chapter 69-06-03 of the North Dakota Public Service Commission's administrative rules, Just Wind, LLC ("Just Wind") respectfully submits this Letter of Intent.

In accordance with Chapter 69-06-03-02, the following required information is as follows:

1. A description of the size and type of facility and the area to be served.

The proposed Wind Farm Project would consist of approximately 408 Wind Turbine Generators with a nameplate capacity of approximately 900 MWs. The project will be located in Emmons County near Strasburg, ND.

2. A map of the study area for the proposed site or corridor.

See the enclosed map depicting the proposed project footprint area. A final turbine layout map will be supplied at a later date.

3. The anticipated construction and operation schedule.

The project construction is anticipated to commence in 2010 with completion in 2011. Commercial operation will commence immediately thereafter.

4. An estimate of the total cost of construction.

Just Wind estimates the total cost of construction for the proposed project to be approximately 2.3 billion dollars.

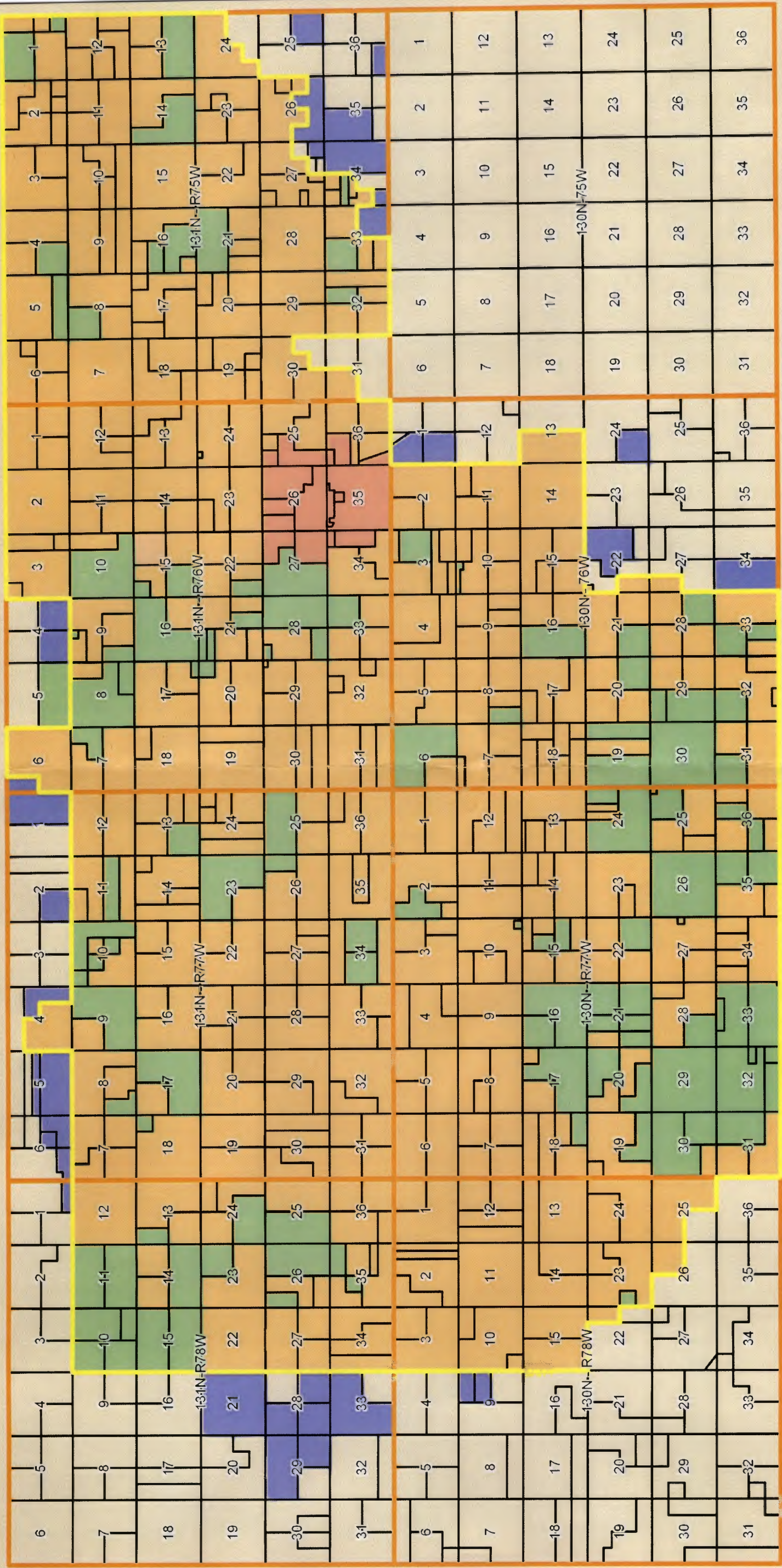
Should you have any questions concerning this Letter of Intent, please contact me directly.

Thank you for your consideration.

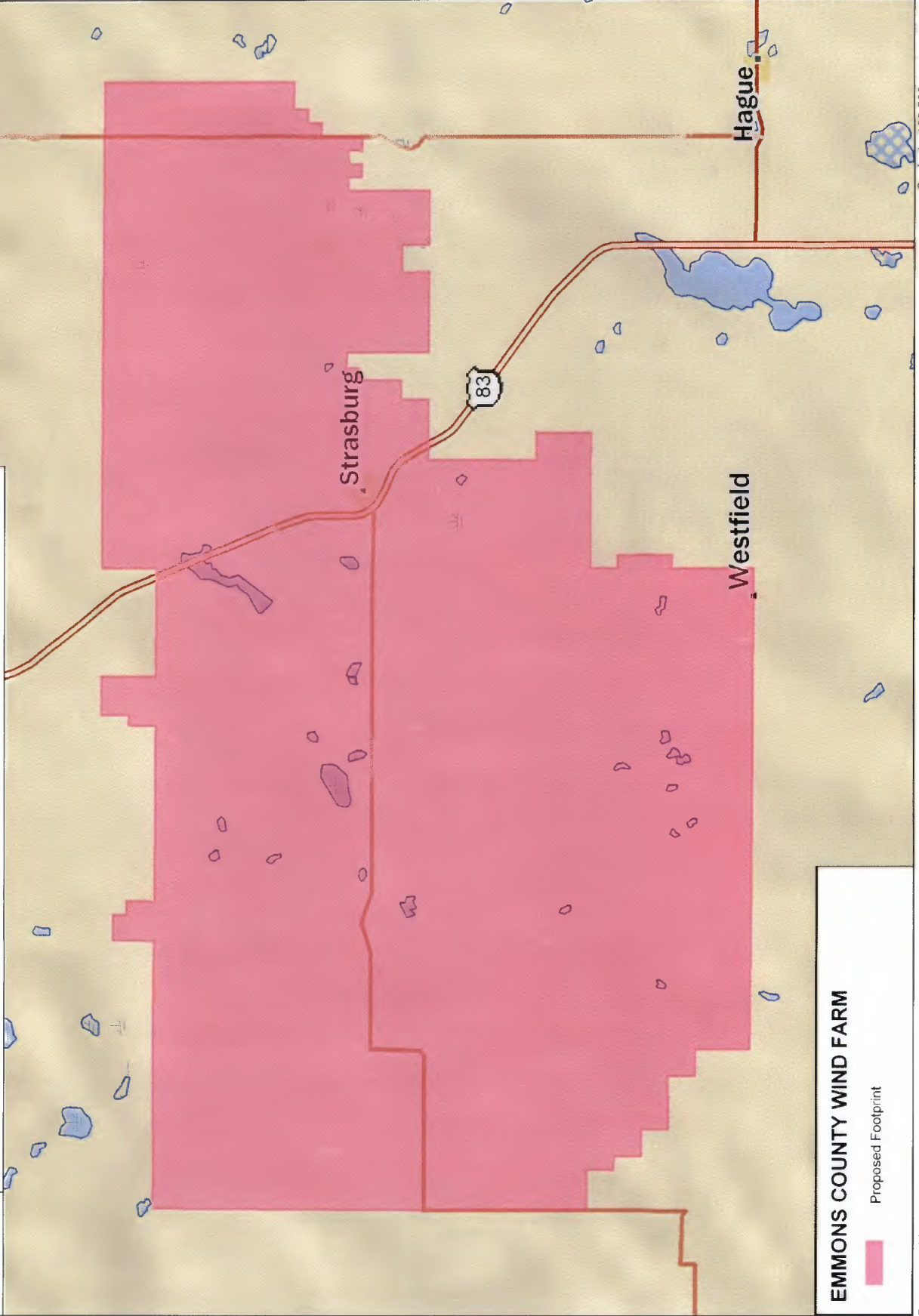
Sincerely,
Jeffrey L. Metzger
President
(612) 245-6608 Cell
jmetzger@just-wind.com

MAP(S) OF THE
STUDY AREA FOR
THE PROPOSED SITE
OR CORRIDOR

EMMONS COUNTY WIND FARM



EMMONS COUNTY WIND FARM



EMMONS COUNTY WIND FARM

Proposed Footprint

Data use subject to license.

© DeLorme, XMap® 6.

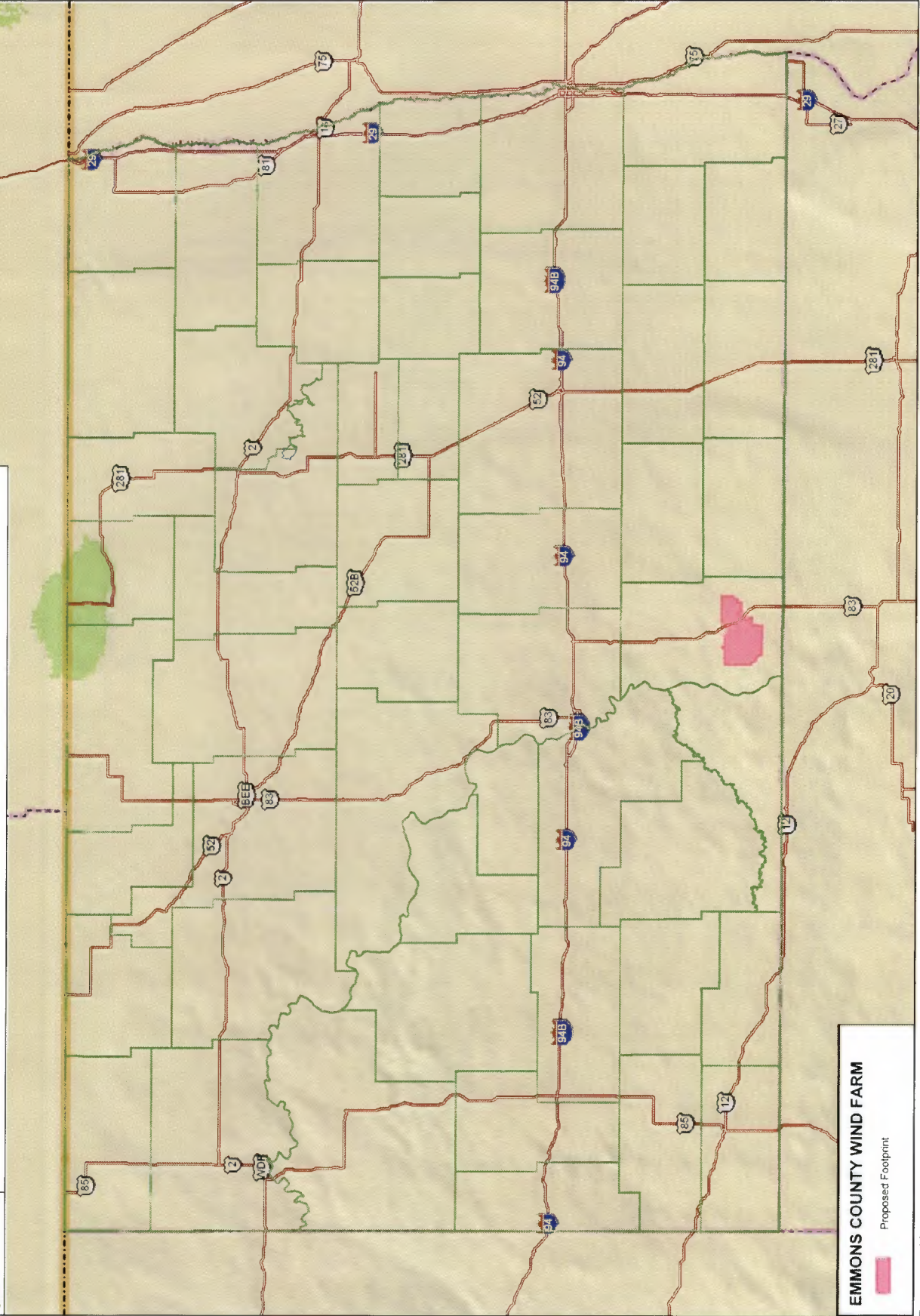
www.delorme.com

Scale 1 : 162,500



Data Zoom 9-3

EMMONS COUNTY WIND FARM



EMMONS COUNTY WIND FARM

Proposed Footprint

Data use subject to license.

© DeLorme, XMap® 6.

www.delorme.com

Scale 1 : 2,600,000



1" = 41.04 mi

Data Zoom 6-3

