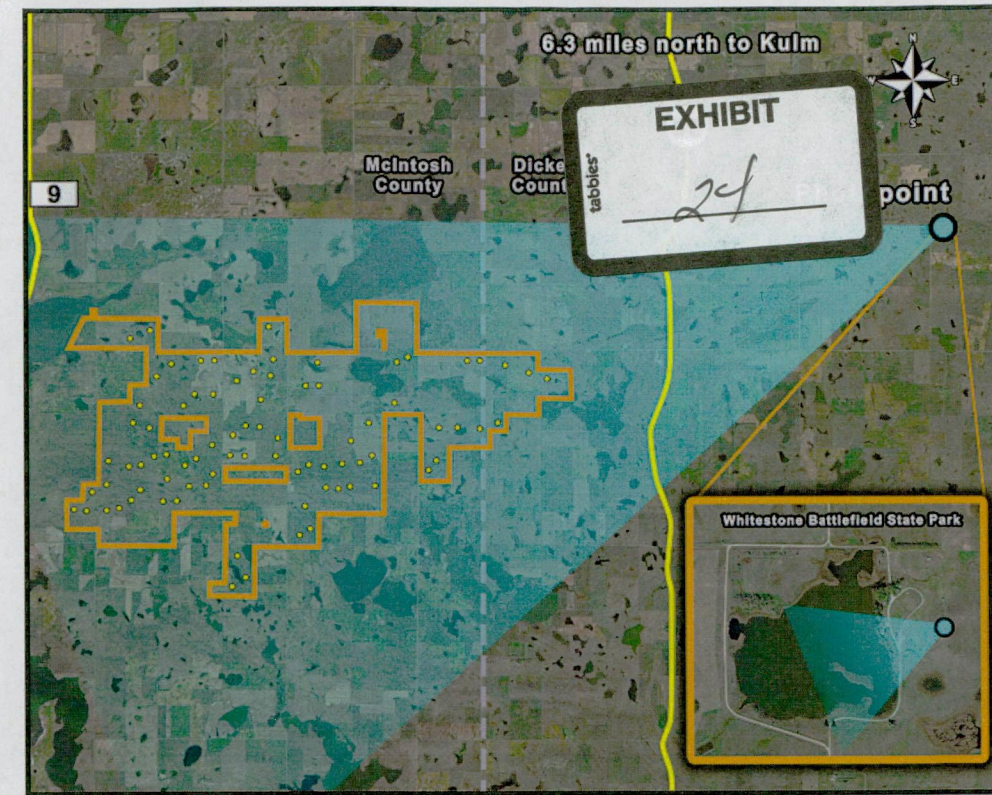




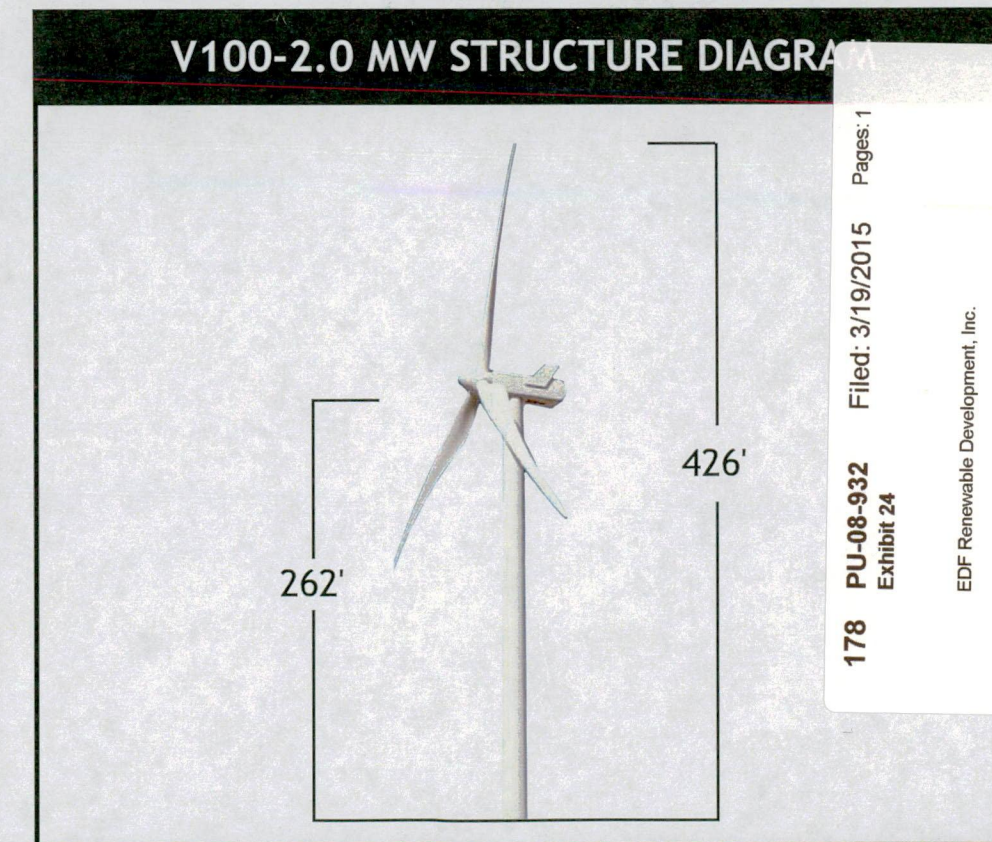
Existing Condition - View to the southwest from Whitestone Battlefield State Park.



Photograph Location: Viewpoint is approximately 6.5 miles from nearest proposed wind turbine and 14.1 miles from the farthest proposed wind turbine.



Simulation - Proposed Project (see V100-2.0 MW Structure Diagram). The Project will be partially backdropped with a majority of the Project being visible above the skyline.



Site Conditions: Clear
 Photo Date and Time: 3-10-15, 11:40 a.m. Focal Length: 50mm
 Printed on 11x17 inch paper this simulation is meant to be viewed at a distance of 10 inches.
 3D models in this simulation were prepared based on Vestas 2MW Platform documentation provided by EDF Renewable Energy.



Merricourt Wind Energy Project
 Whitestone Battlefield State Park Simulation
 March 2015

178 PU-08-932 Exhibit 24
 Filed: 3/19/2015
 Pages: 1
 EDF Renewable Development, Inc.