

Supplemental Map Book

Merricourt Wind Power Project
Dickey and McIntosh Counties

Prepared for:



Prepared by:



R68W

R67W

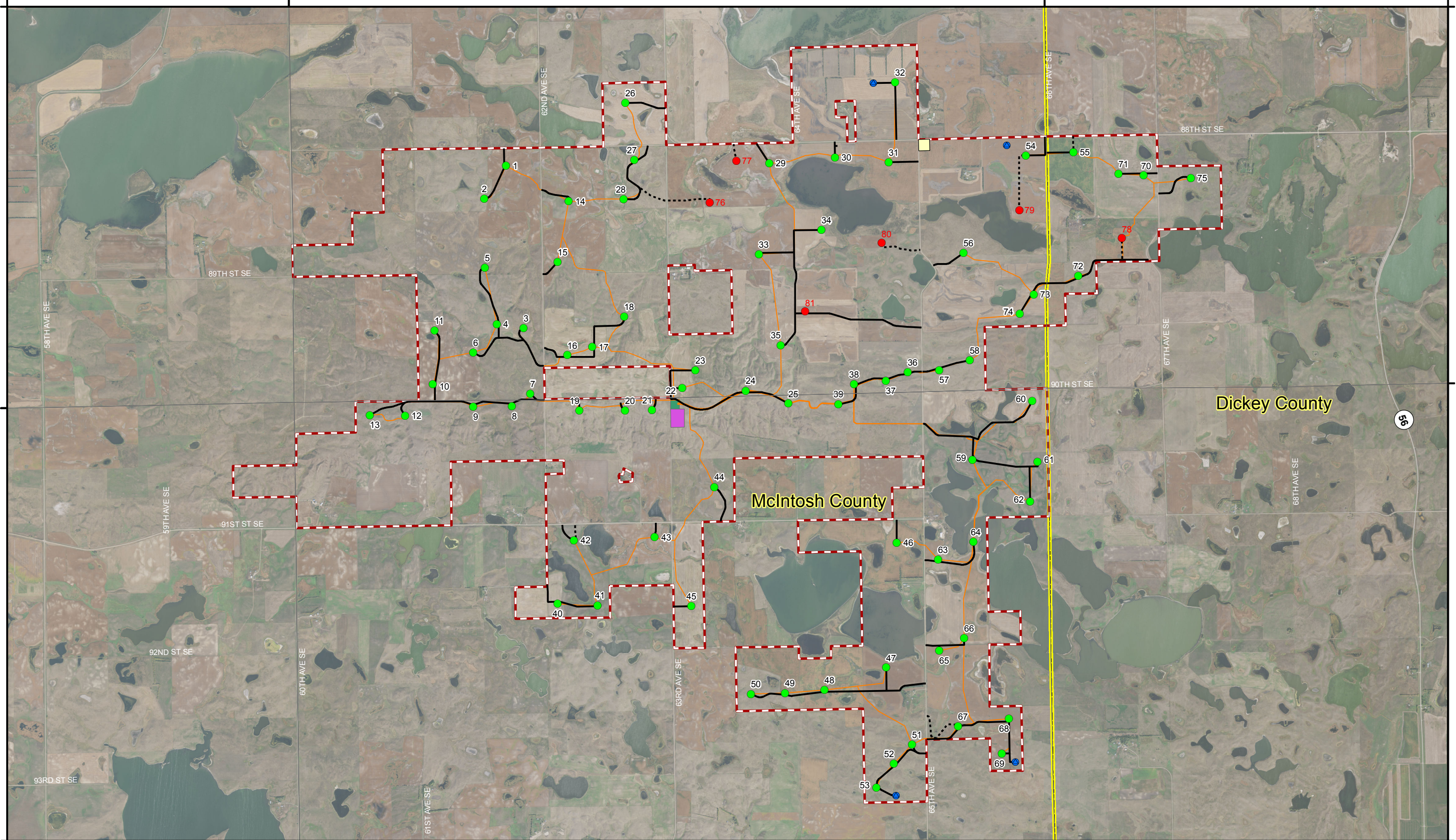
R66W

T131N

T131N

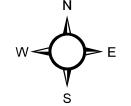
T130N

T130N



Merricourt Wind Power Project
Figure 1. Proposed Turbine Layout

- Primary Turbine Location
- Alternate Turbine Location
- ▲ Met Towers
- Primary Access Roads
- - - Alternate Access Roads
- Collection Lines
- ▭ Operations and Maintenance
- ▭ EDF Substation
- ▭ Existing MDU Substation
- ▭ Final Project Boundary



KLJ Project Number: 1316103
 Date Created: 3/9/2017 Created By: DNP



R68W

R67W

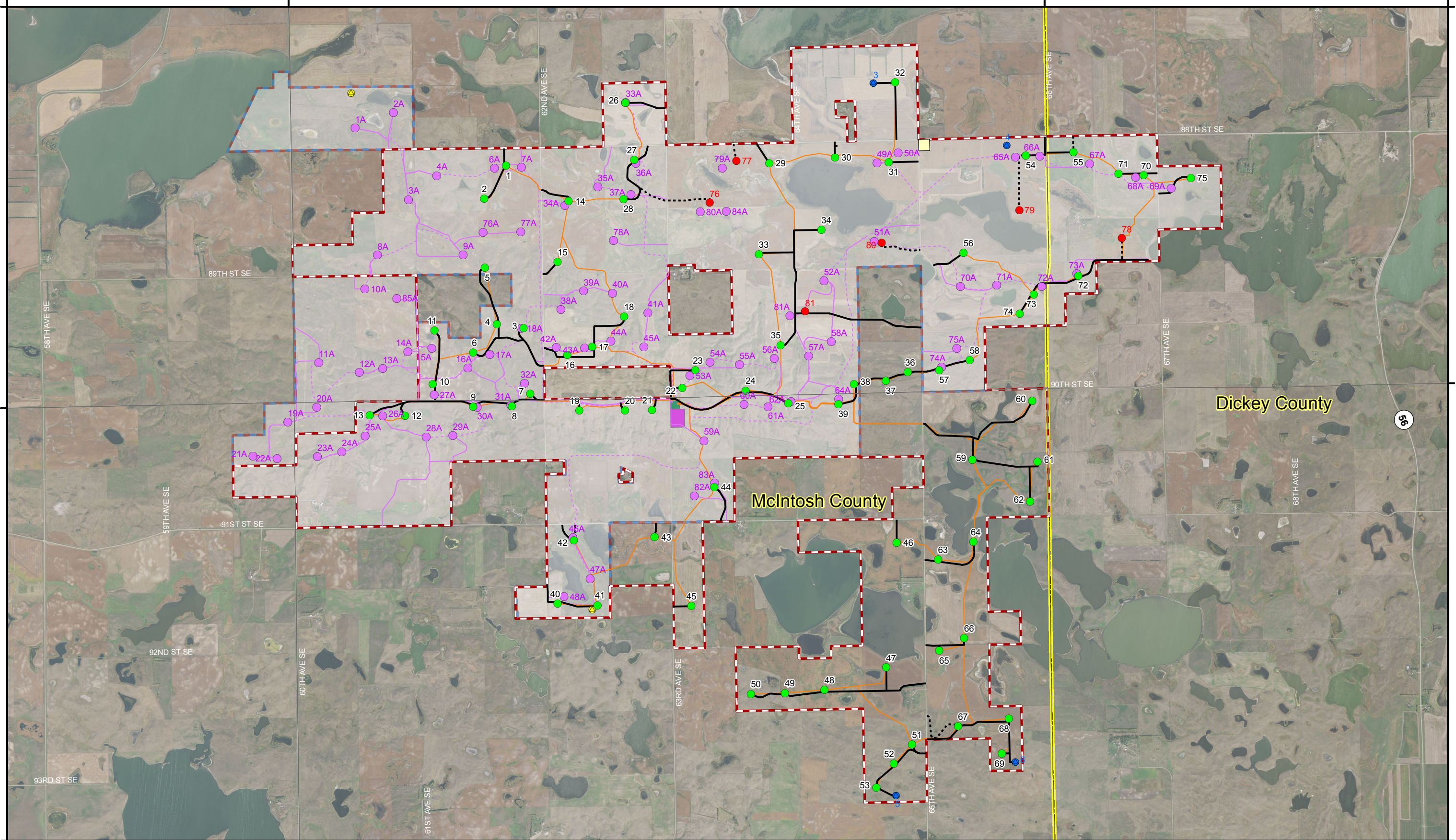
R66W

T131N

T131N

T130N

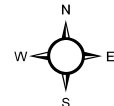
T130N



Dickey County

McIntosh County

55



Merricourt Wind Power Project

Figure 2. Turbines, Access Road & Collection Line Comparison

- Primary Turbine Location
- Alternate Turbine Location
- Met Towers
- Primary Access Roads
- Alternate Access Roads
- Collection Lines
- Final Project Boundary
- Previous Project Boundary
- Previous Turbine Location
- Previous Met Towers
- Previous Access Roads
- Previous Collection Lines
- EDF Substation
- MDU Substation
- Operations and Maintenance

KLJ Project Number: 1316103
 Date Created: 3/9/2017 Created By: DNP

0 0.5 1 Miles

R68W

R67W

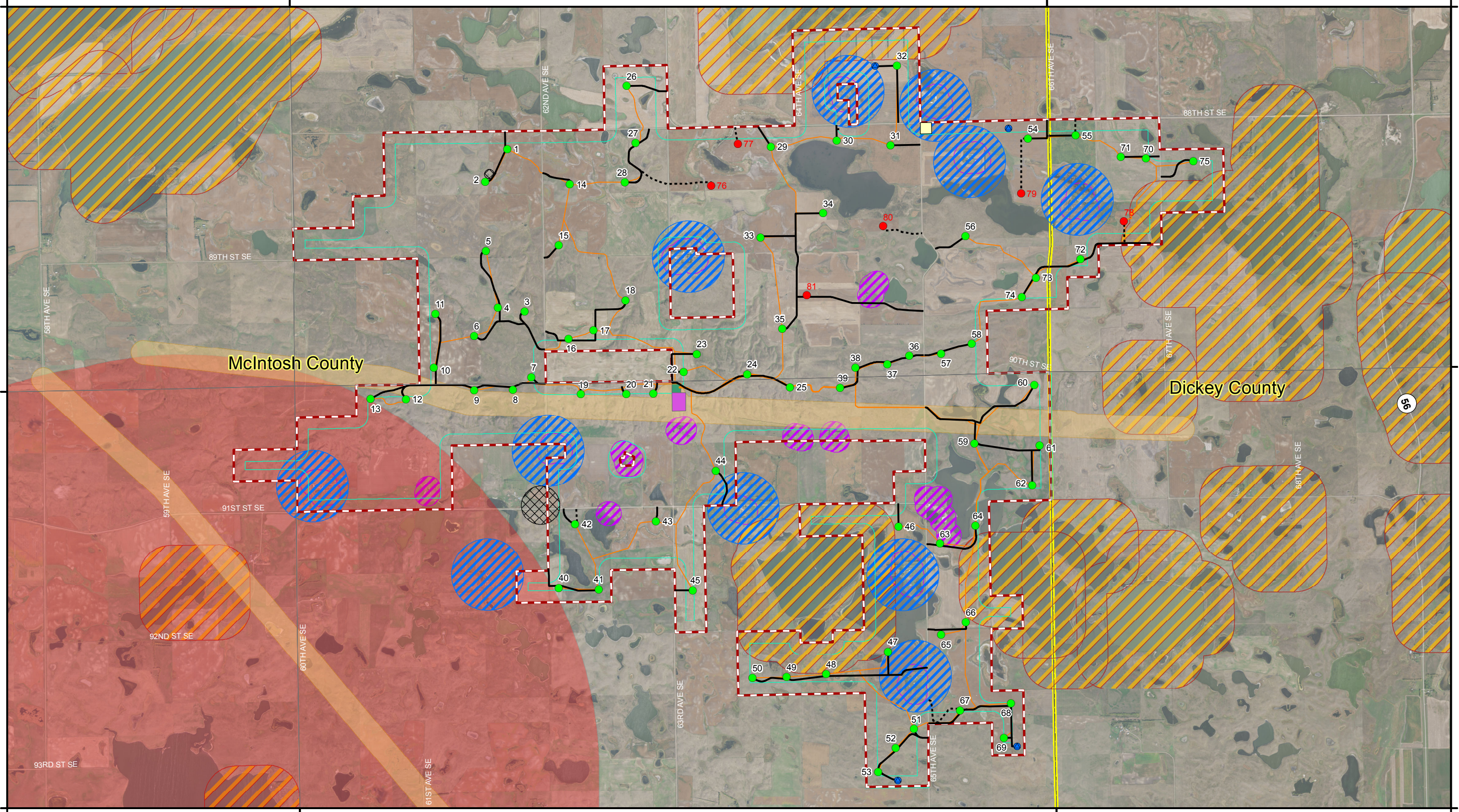
R66W

T131N

T131N

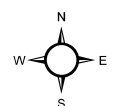
T130N

T130N



McIntosh County

Dickey County

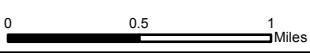


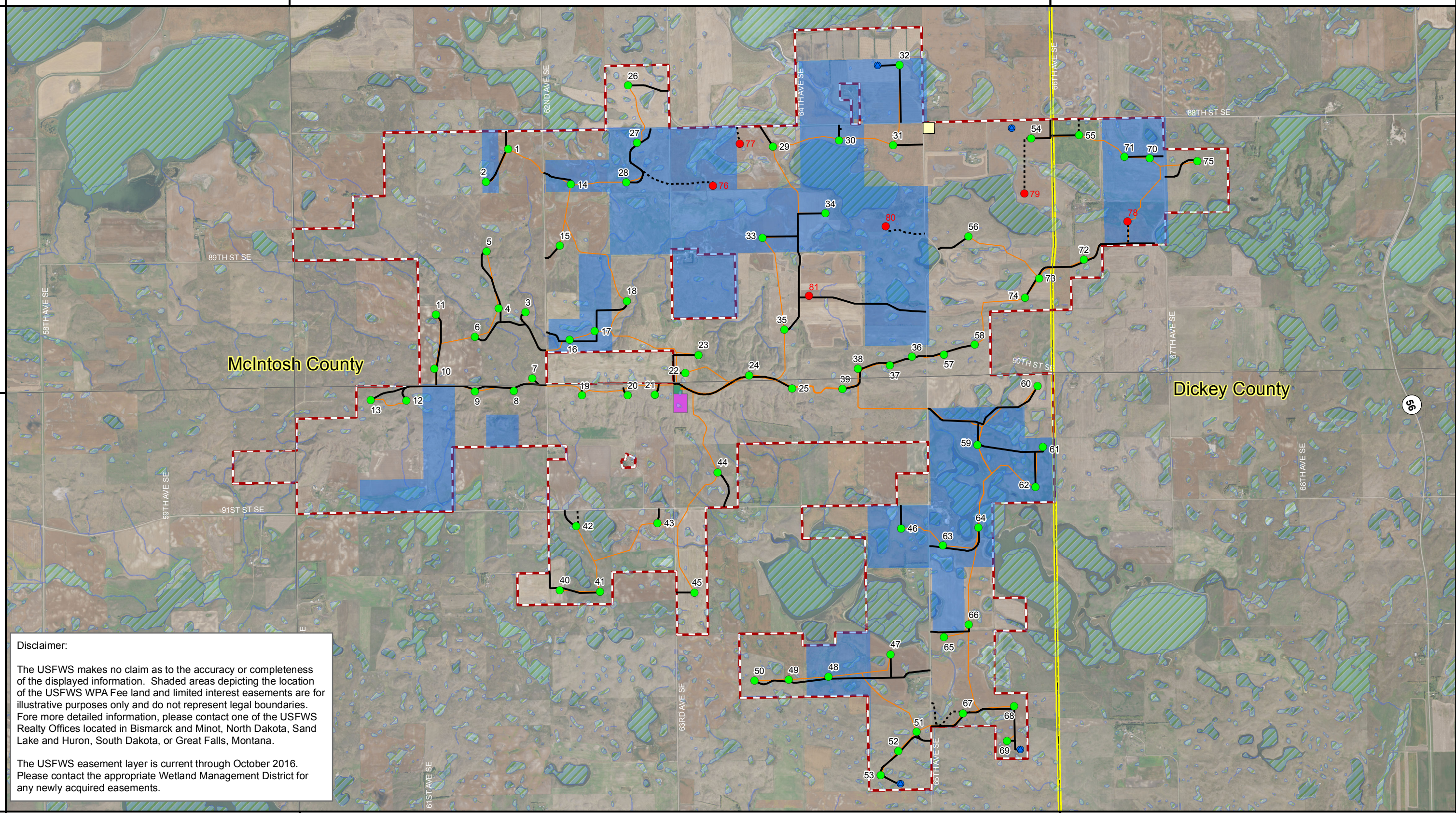
Merricourt Wind Power Project

Figure 3. Exclusion Areas

- Primary Turbine Location
- Collection Lines
- Project Boundary SetBack
- Alternate Turbine Location
- Operations and Maintenance
- Occupied Homes
- Met Towers
- EDF Substation
- Transmission Line
- Primary Access Roads
- Existing MDU Substation
- Piping Plover Critical Habitat
- Alternate Access Roads
- Final Project Boundary
- Unoccupied Buildings
- Waterfowl Production Areas
- Cemetery Locations

KLJ Project Number: 1316103
 Date Created: 3/9/2017 Created By: DNP

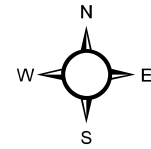




Disclaimer:

The USFWS makes no claim as to the accuracy or completeness of the displayed information. Shaded areas depicting the location of the USFWS WPA Fee land and limited interest easements are for illustrative purposes only and do not represent legal boundaries. For more detailed information, please contact one of the USFWS Realty Offices located in Bismarck and Minot, North Dakota, Sand Lake and Huron, South Dakota, or Great Falls, Montana.

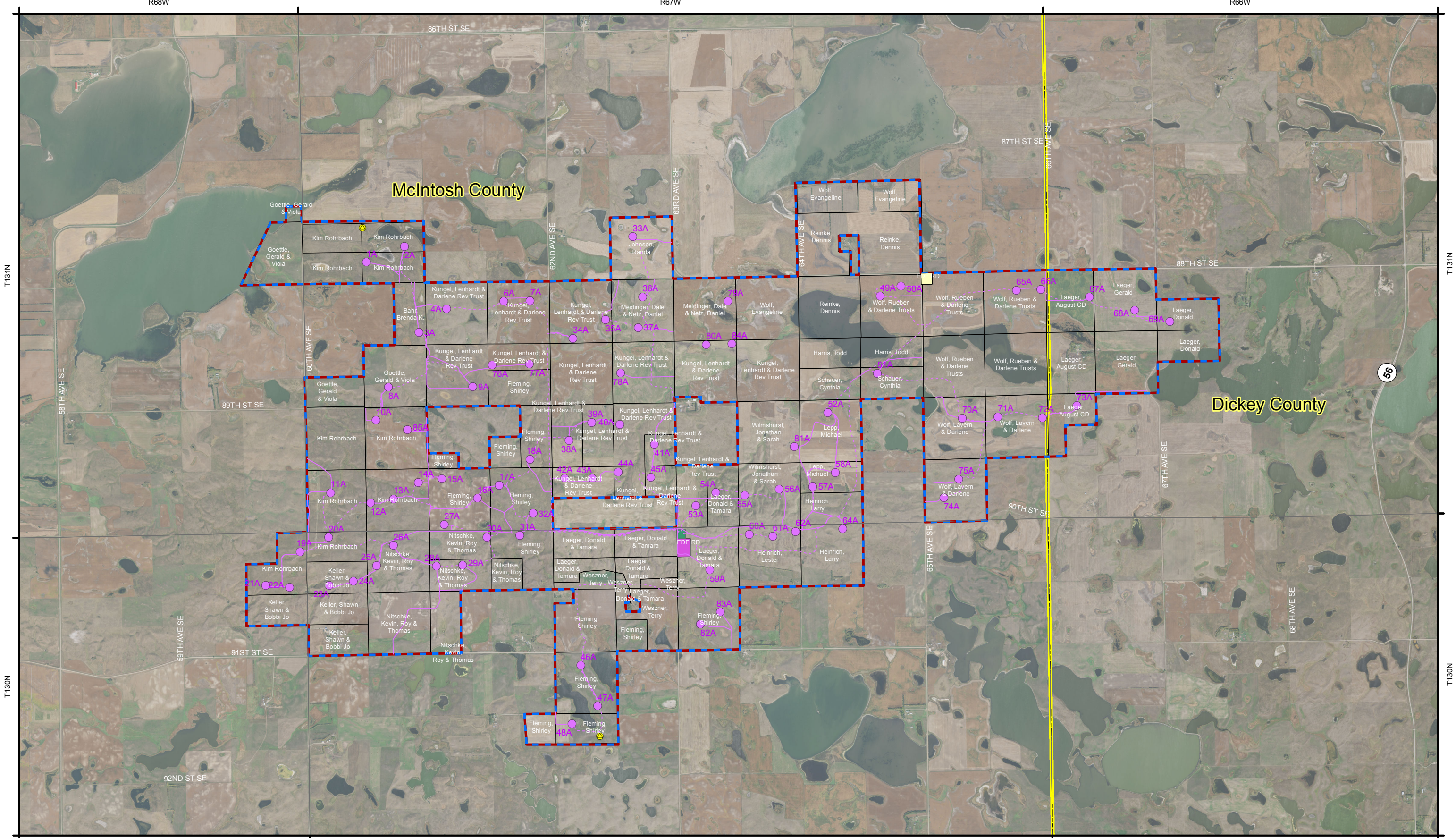
The USFWS easement layer is current through October 2016. Please contact the appropriate Wetland Management District for any newly acquired easements.



Merricourt Wind Power Project

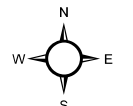
Figure 4. Avoidance Areas

- Primary Turbine Location
- Operations and Maintenance
- Grassland Easement Acquired After Wind Easement
- Alternate Turbine Location
- EDF Substation
- USFWS Wetland Easement
- Met Towers
- Existing MDU Substation
- NWI Wetlands
- Primary Access Roads
- Alternate Access Roads
- Final Project Boundary
- Collection Lines



Merricourt Wind Power Project
Figure 5. Leased Land - Previous Layout

- Previous Project Boundary
- Previous Access Roads
- EDF Substation
- Previous Turbine Location
- Previous Collection Lines
- MDU Substation
- ▲ Previous Met Towers
- Operations and Maintenance



KLJ Project Number: 1316103
 Date Created: 3/9/2017 | Created By: DNP



R68W

R67W

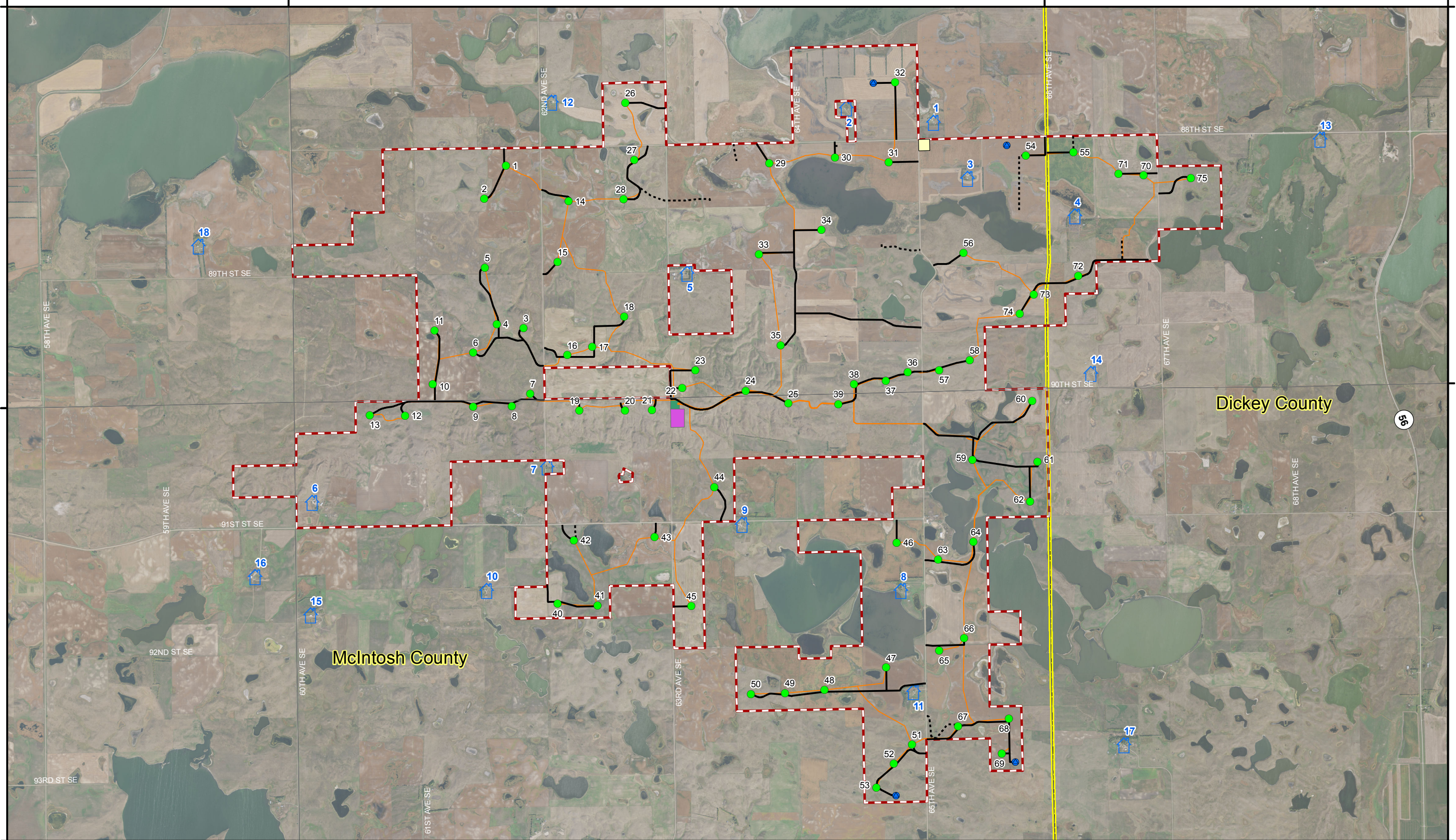
R66W

T131N

T131N

T130N

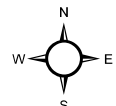
T130N



Dickey County

McIntosh County

55



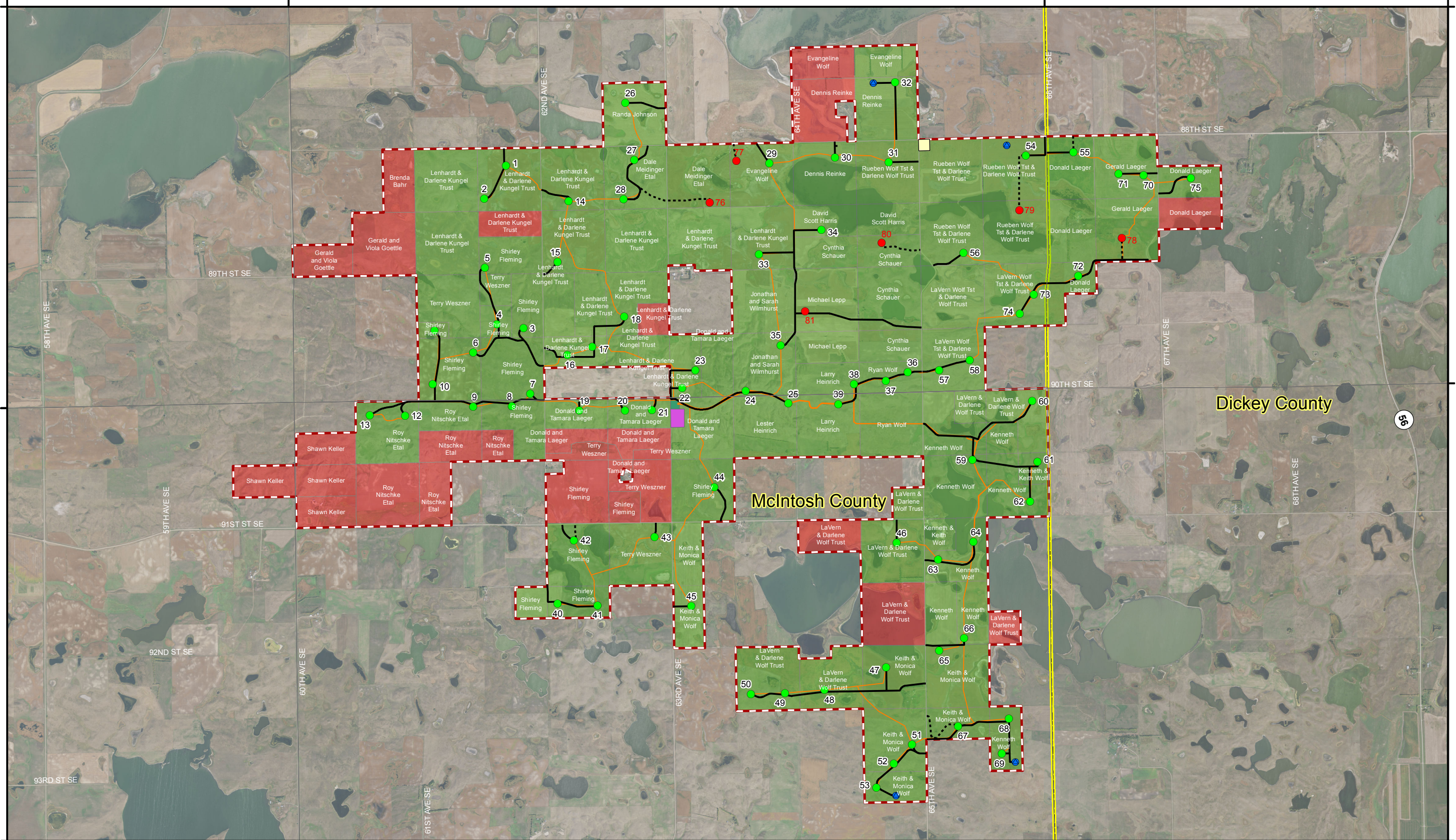
Merricourt Wind Power Project

Figure 7. Occupied Homes

- Primary Turbine Location
- Alternate Turbine Location
- Met Towers
- 🏠 Occupied Homes
- Primary Access Roads
- Alternate Access Roads
- Collection Lines
- Operations and Maintenance
- EDF Substation
- Existing MDU Substation
- Final Project Boundary

KLJ Project Number: 1316103
 Date Created: 3/9/2017 Created By: DNP

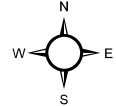




Dickey County

McIntosh County

55



Merricourt Wind Power Project
Figure 8. Project Area Parcels
Without Facilities

- Primary Turbine Location
- Alternate Turbine Location
- Met Towers
- Primary Access Roads
- Alternate Access Roads
- Collection Lines
- Operations and Maintenance
- EDF Substation
- Existing MDU Substation
- Final Project Boundary
- No Facility on Parcel
- Facility on Parcel

R68W

R67W

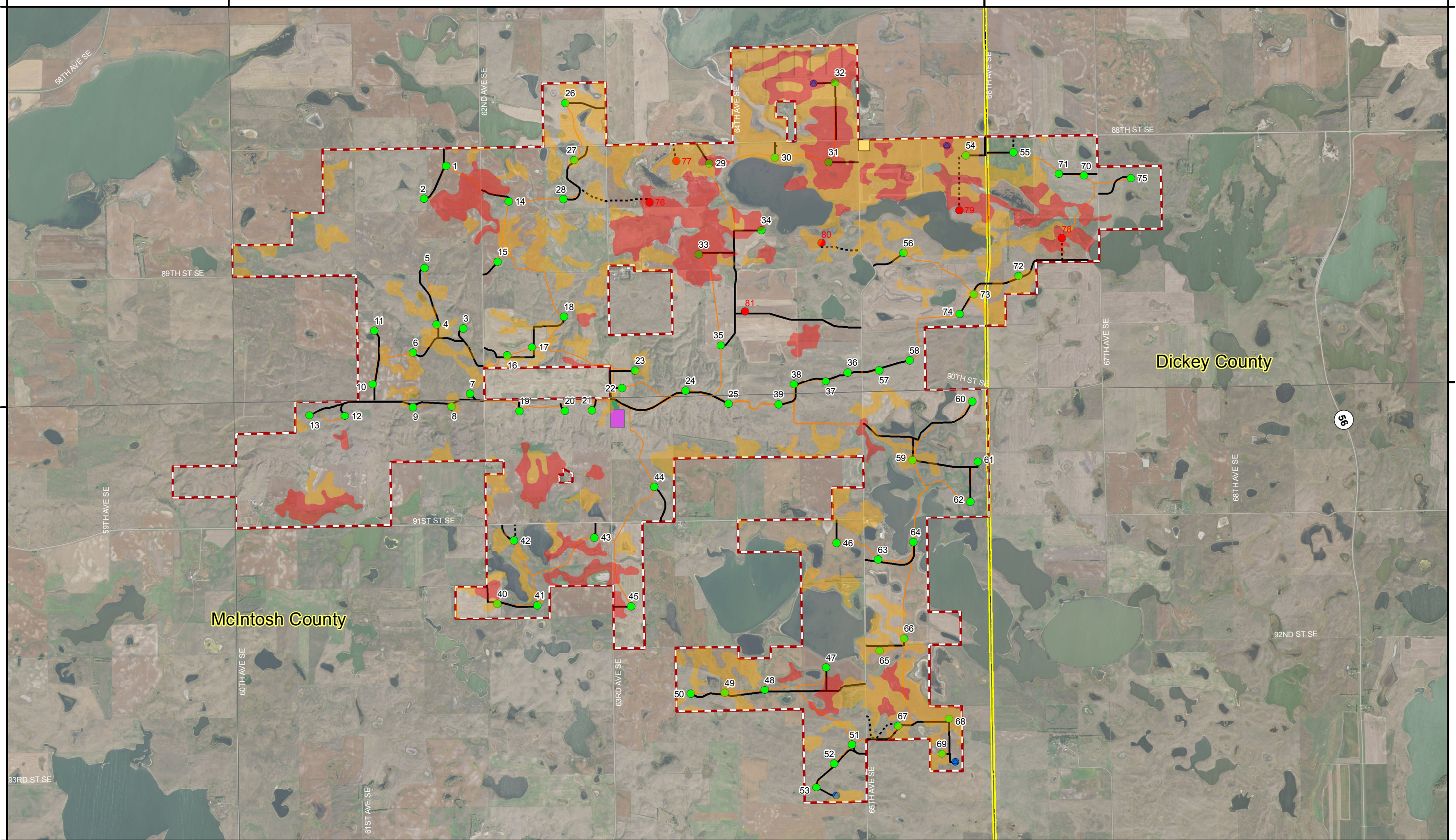
R66W

T131N

T131N

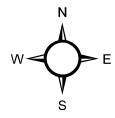
T130N

T130N



Dickey County

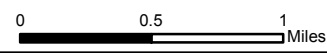
McIntosh County



Merricourt Wind Power Project

Figure 9. Farmland Classification

KLJ Project Number: 1316103
 Date Created: 3/9/2017 Created By: DNP



- All areas are prime farmland
- Primary Turbine Location
- Primary Access Roads
- EDF Substation
- Farmland of statewide importance
- Alternate Turbine Location
- Alternate Access Roads
- Existing MDU Substation
- Collection Lines
- Met Towers
- Operations and Maintenance
- Final Project Boundary

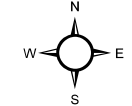


McIntosh County

88TH ST SE

60TH AVE SE

62ND AVE SE



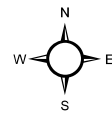
KLJ Project Number: 1316103
 Date Created: 3/9/2017 Created By: DNP



1	2	3
4	5	6
7	8	9
10	11	12

Merricourt Wind Power Project Proposed Turbine Layout

- Primary Turbine Location
- Alternate Turbine Location
- Met Towers
- Primary Access Roads
- Alternate Access Roads
- Collection Lines
- Operations and Maintenance
- EDF Substation
- Existing MDU Substation
- Final Project Boundary



1	2	3
4	5	6
7	8	9
10	11	12

Merricourt Wind Power Project Proposed Turbine Layout

- Primary Turbine Location
- Alternate Turbine Location
- Met Towers
- Primary Access Roads
- Alternate Access Roads
- Collection Lines
- Operations and Maintenance
- EDF Substation
- Existing MDU Substation
- Final Project Boundary



McIntosh County

Dickey County

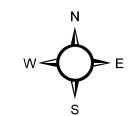
87TH ST SE

88TH ST SE

66TH AVE SE

67TH AVE SE

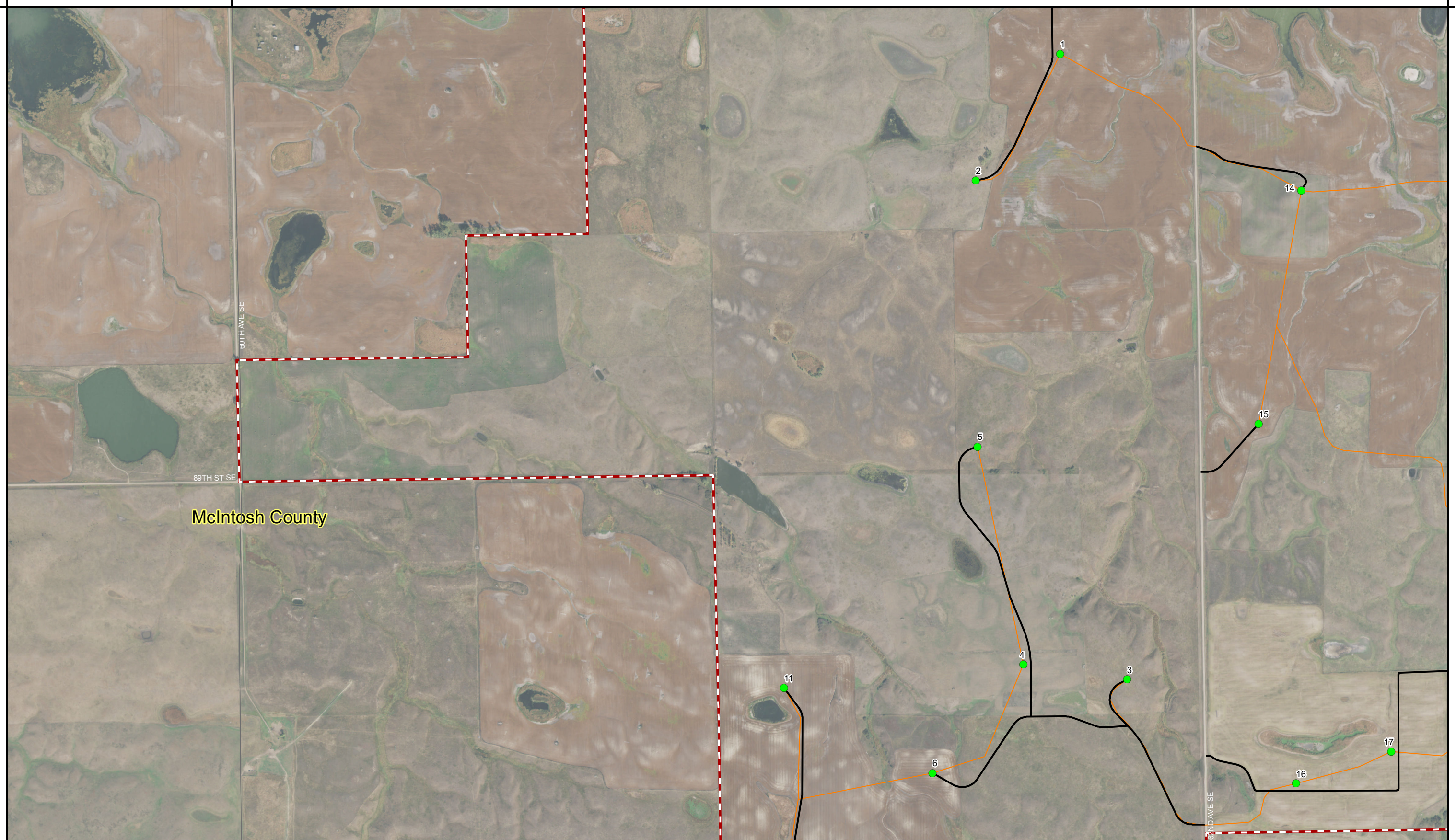
55



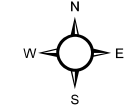
1	2	3
4	5	6
7	8	9
10	11	12

Merricourt Wind Power Project Proposed Turbine Layout

- Primary Turbine Location
- Alternate Turbine Location
- Met Towers
- Primary Access Roads
- Alternate Access Roads
- Collection Lines
- Operations and Maintenance
- EDF Substation
- Existing MDU Substation
- Final Project Boundary



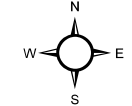
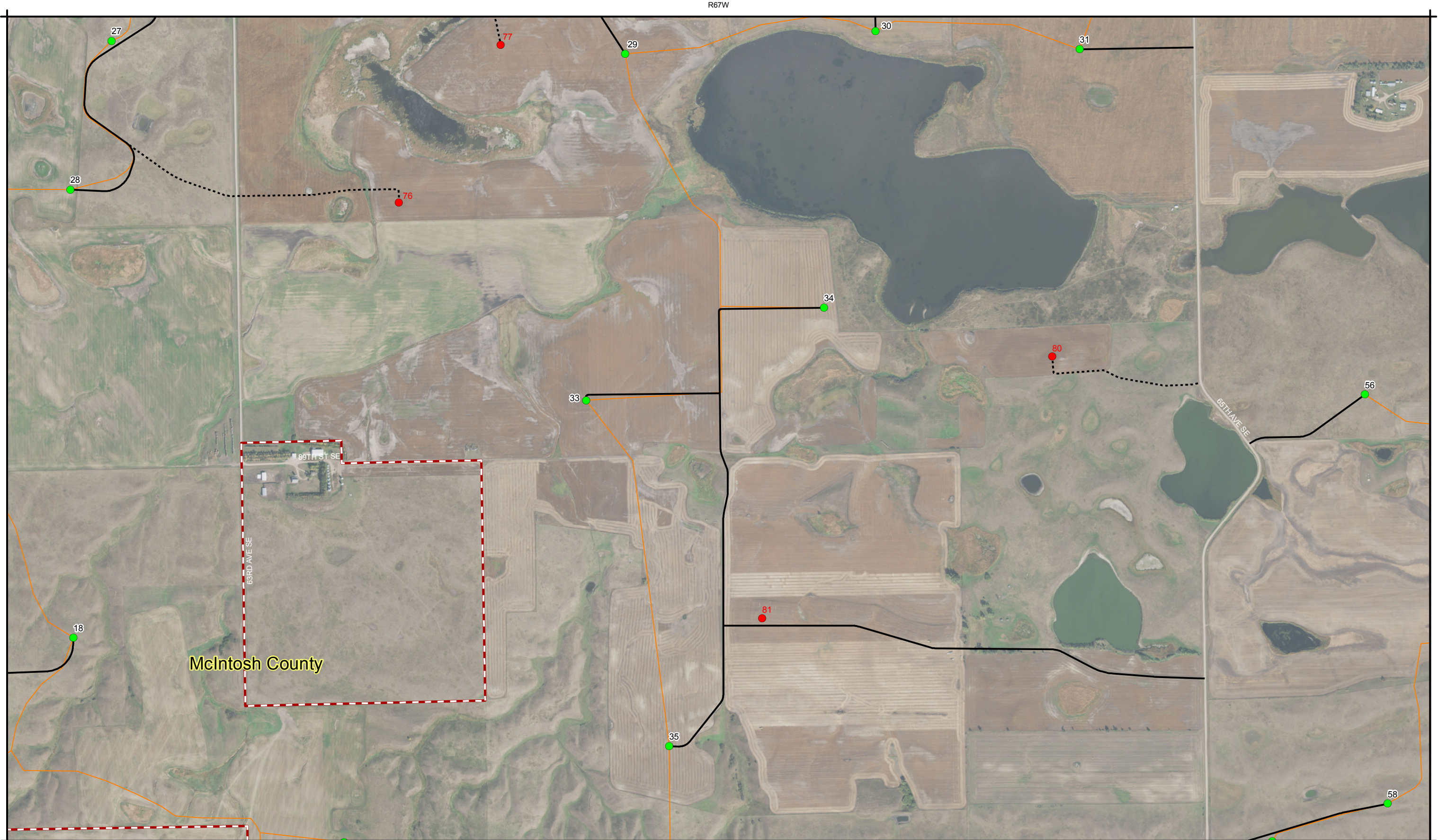
McIntosh County



1	2	3
4	5	6
7	8	9
10	11	12

Merricourt Wind Power Project Proposed Turbine Layout

- Primary Turbine Location
- Alternate Turbine Location
- Met Towers
- Primary Access Roads
- Alternate Access Roads
- Collection Lines
- Operations and Maintenance
- EDF Substation
- Existing MDU Substation
- Final Project Boundary



1	2	3
4	5	6
7	8	9
10	11	12

Merricourt Wind Power Project Proposed Turbine Layout

- Primary Turbine Location
- Alternate Turbine Location
- Met Towers
- Primary Access Roads
- Alternate Access Roads
- Collection Lines
- Operations and Maintenance
- EDF Substation
- Existing MDU Substation
- Final Project Boundary



R67W

R66W

T131N

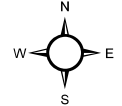
T131N



McIntosh County

Dickey County

6TH AVE SE



KLJ Project Number: 1316103
 Date Created: 3/9/2017 Created By: DNP



1	2	3
4	5	6
7	8	9
10	11	12

Merricourt Wind Power Project Proposed Turbine Layout

- Primary Turbine Location
- Alternate Turbine Location
- Met Towers
- Primary Access Roads
- Alternate Access Roads
- Collection Lines
- ▭ Operations and Maintenance
- ▭ EDF Substation
- ▭ Existing MDU Substation
- ▭ Final Project Boundary

R68W

R67W

T131N

T131N

T130N

T130N



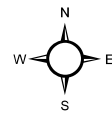
McIntosh County

60TH AVE SE

91ST ST SE

90TH ST SE

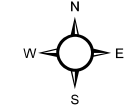
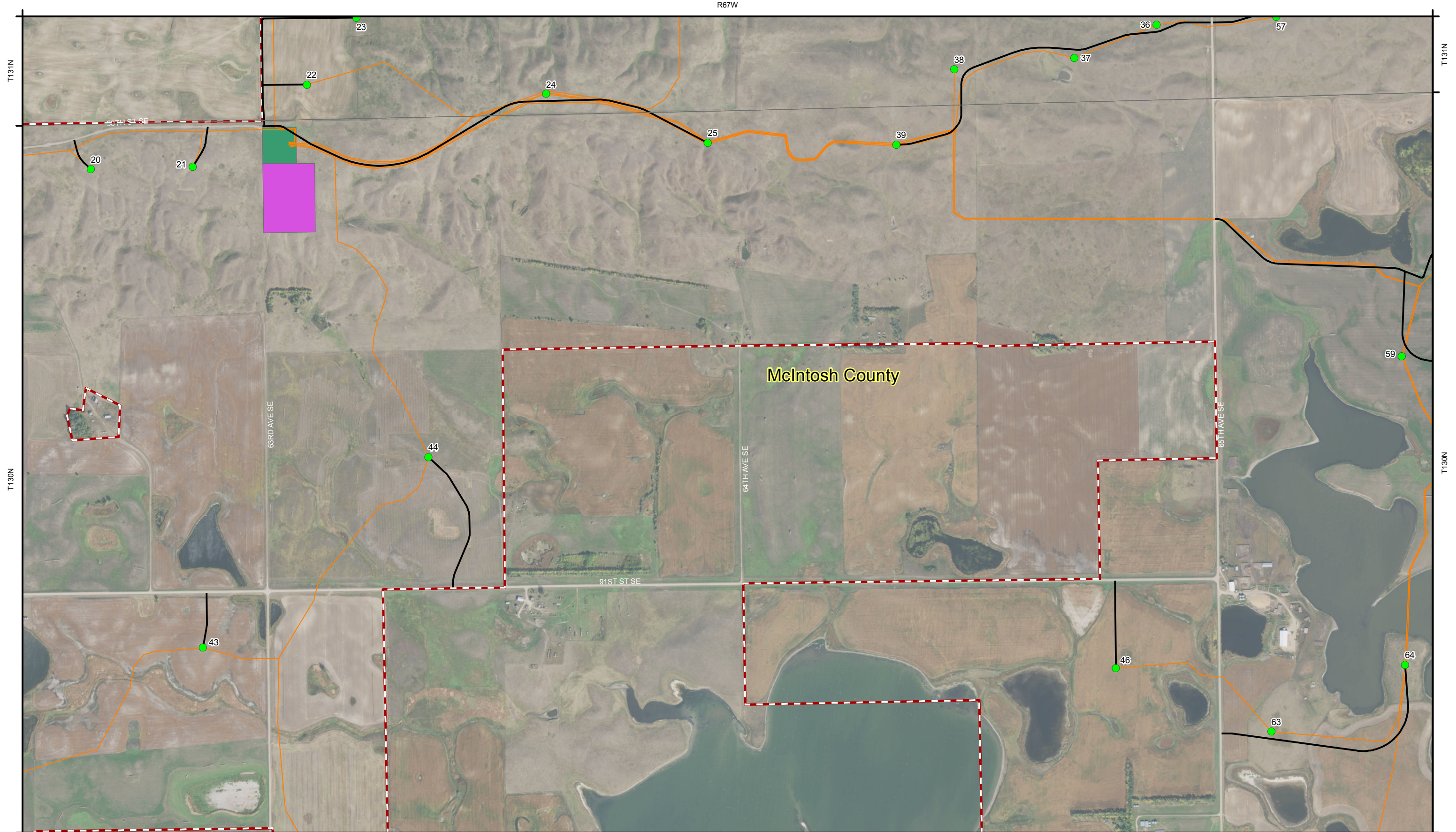
62ND AVE SE



1	2	3
4	5	6
7	8	9
10	11	12

Merricourt Wind Power Project Proposed Turbine Layout

- Primary Turbine Location
- Alternate Turbine Location
- Met Towers
- Primary Access Roads
- Alternate Access Roads
- Collection Lines
- Operations and Maintenance
- EDF Substation
- Existing MDU Substation
- Final Project Boundary



1	2	3
4	5	6
7	8	9
10	11	12

Merricourt Wind Power Project Proposed Turbine Layout

- Primary Turbine Location
- Alternate Turbine Location
- Met Towers
- Primary Access Roads
- Alternate Access Roads
- Collection Lines
- Operations and Maintenance
- EDF Substation
- Existing MDU Substation
- Final Project Boundary

R67W

R66W

T131N

T131N

T130N

T130N

30TH ST SE

Dickey County

McIntosh County

67TH AVE SE

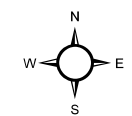
68TH AVE SE

91ST ST SE

60

61

62



1	2	3
4	5	6
7	8	9
10	11	12

Merricourt Wind Power Project Proposed Turbine Layout

- Primary Turbine Location
- Alternate Turbine Location
- Met Towers
- Primary Access Roads
- Alternate Access Roads
- Collection Lines
- Operations and Maintenance
- EDF Substation
- Existing MDU Substation
- Final Project Boundary



92ND ST SE

60TH AVE SE

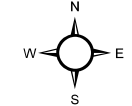
61ST AVE SE

62ND AVE SE

McIntosh County

40

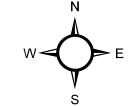
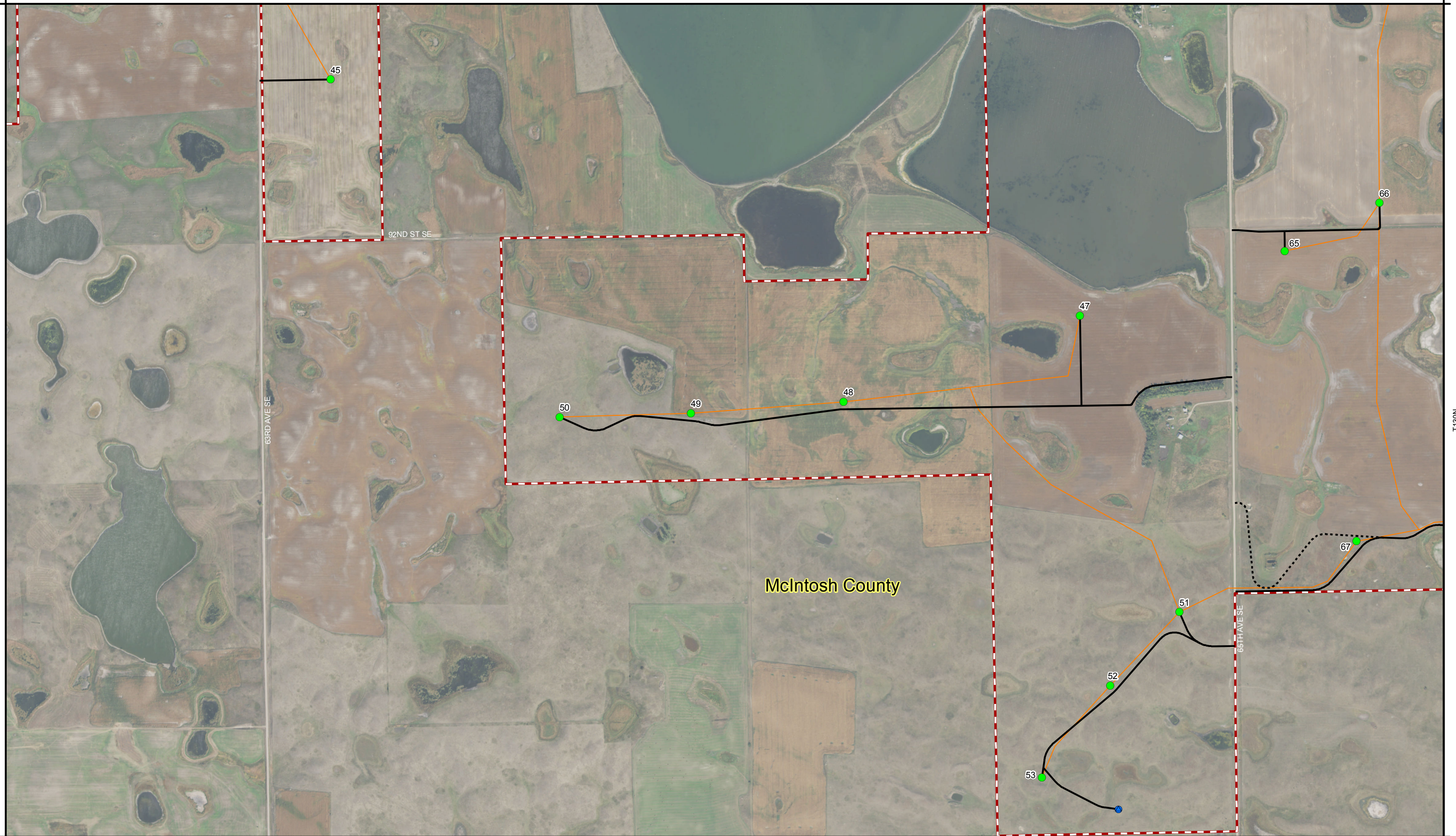
41



1	2	3
4	5	6
7	8	9
10	11	12

Merricourt Wind Power Project Proposed Turbine Layout

- Primary Turbine Location
- Alternate Turbine Location
- Met Towers
- Primary Access Roads
- Alternate Access Roads
- Collection Lines
- Operations and Maintenance
- EDF Substation
- Existing MDU Substation
- Final Project Boundary



1	2	3
4	5	6
7	8	9
10	11	12

Merricourt Wind Power Project Proposed Turbine Layout

- Primary Turbine Location
- Alternate Turbine Location
- Met Towers
- Primary Access Roads
- ⋯ Alternate Access Roads
- Collection Lines
- ▭ Operations and Maintenance
- ▭ EDF Substation
- ▭ Existing MDU Substation
- ▭ Final Project Boundary



McIntosh County

Dickey County

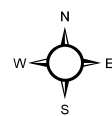
93RD ST SE

92ND ST SE

67TH AVE SE

68

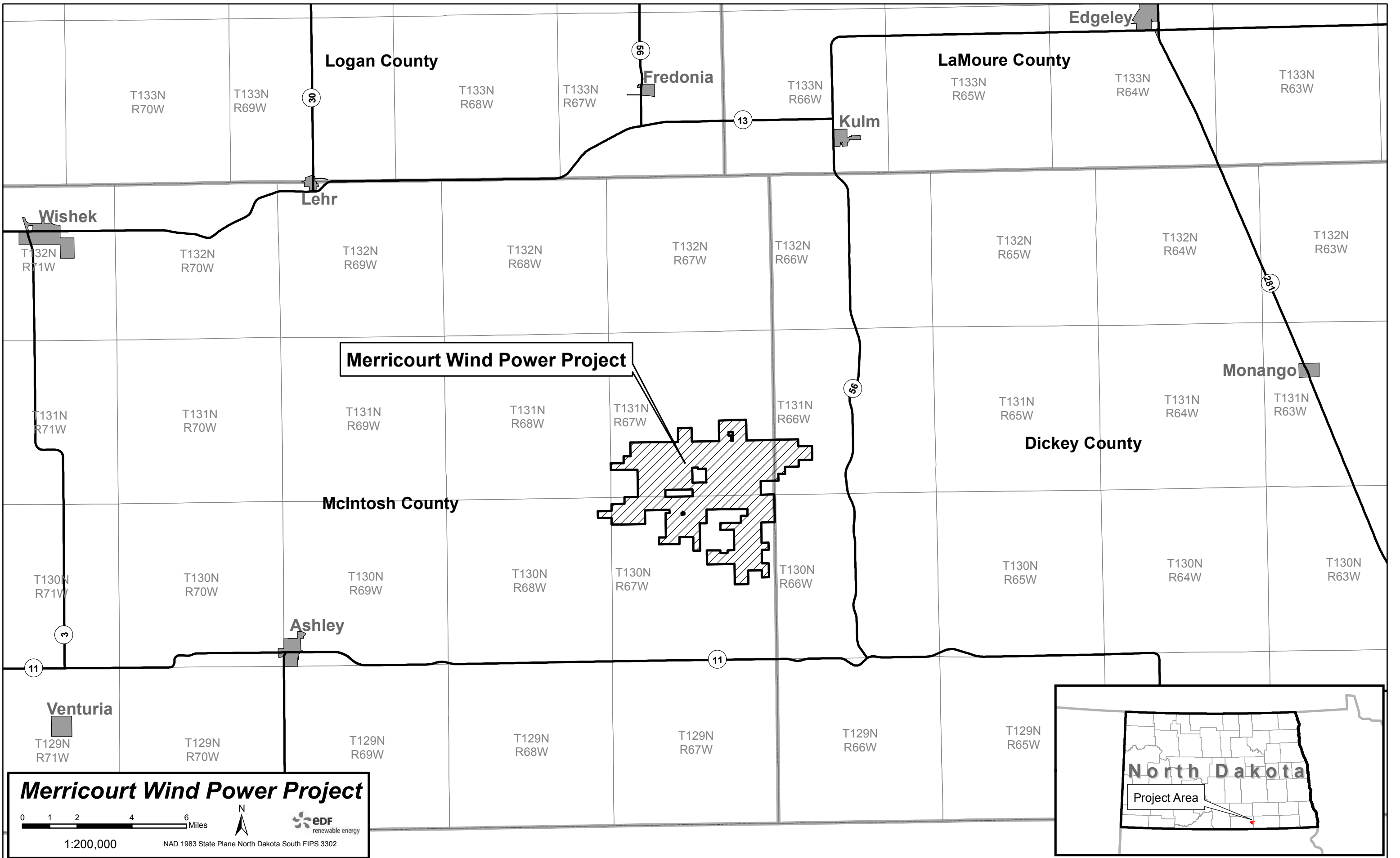
69



1	2	3
4	5	6
7	8	9
10	11	12

Merricourt Wind Power Project Proposed Turbine Layout

- Primary Turbine Location
- Alternate Turbine Location
- Met Towers
- Primary Access Roads
- Alternate Access Roads
- Collection Lines
- Operations and Maintenance
- EDF Substation
- Existing MDU Substation
- Final Project Boundary



Merricourt Wind Power Project

0 1 2 4 6 Miles

1:200,000

NAD 1983 State Plane North Dakota South FIPS 3302

