



33 South Sixth Street, Suite 4200
Minneapolis, MN 55402
T. 612.373.8800
F. 612.373.8881
www.stoel.com

SARA E. BERGAN
D. 612.373.8819

sara.bergan@stoel.com

September 22, 2017



VIA EMAIL TO NDPSC@ND.GOV

Mr. Darrell Nitschke
Executive Director
North Dakota Public Service Commission
600 E. Blvd., Dept. 408
Bismarck, ND 58505-0480

Re: Merricourt Application for a Second Amendment to its Certificate of Site Compatibility (Case No. PU-08-932)

Dear Mr. Nitschke:

Please find attached for filing in the above-captioned docket:

1. Late-filed Exhibit 35 which identifies the distances between the nearest turbines and receptor IDs for the Project's Noise and Shadow analysis.

Sincerely,

Sara E. Bergan

SEB:cal
Enclosure

cc (via email): Judge Timothy Dawson
Mitch Armstrong
Jerry Lein
Kevin Pranis
Chris Sternhagen



Noise modeling results at Merricourt for Layout v91 (V110-2.0)

Coordinates reported in UTM datum NAD83 Zone 14

Receptor ID (from Sound/Shadow Analysis)	Receptor ID (from Table 4/Figure 7)	Eastings [m]	Northing [m]	v91 Noise [dB]	Distance to Nearest Turbine [ft]	Nearest Turbine	Receptor Participation Status
26	11	497902	5102858	47.4	1531	47	Participating
21	8	497769	5104152	45.4	2010	46	Participating
17	7	493302	5105806	43.9	2719	19	Non-participating
22	9	495757	5105037	43.0	1942	44	Participating*
15	5	495120	5108250	41.9	3112	33	Non-participating
14	14	500243	5106869	41.2	2711	60	Non-participating
9	4	500078	5108882	39.9	2158	78	Participating
23	10	492488	5104255	39.3	3019	40	Non-participating
8	3	498719	5109392	35.9	2537	79	Participating
16	6	490283	5105421	35.8	4384	13	Participating
27	17	500571	5102128	34.4	4932	68	Non-participating
6	2	497191	5110317	34.2	2115	30	Non-participating
7	12	493436	5110464	33.7	3084	26	Non-participating
5	1	498236	5110200	33.4	2316	32	Non-participating
18	26	502098	5105119	31.8	8651	61	Non-participating
24	15	490239	5103986	31.7	8727	13	Non-participating
25	16	489541	5104486	31.1	8299	13	Participating*
34	35	497559	5099194	30.5	8069	53	Non-participating
33	34	501205	5100191	28.8	9431	69	Non-participating
32	33	501750	5100252	27.9	10747	69	Non-participating
2	20	493612	5112879	27.8	8392	26	Non-participating
42	43	497919	5097919	27.3	12354	53	Non-participating
1	19	493771	5113184	27.2	9228	26	Non-participating
10	13	503221	5109799	27.1	5639	75	Non-participating
3	21	494256	5113407	26.9	9750	26	Non-participating
35	36	501219	5098859	26.6	12729	69	Non-participating
4	22	495901	5113848	26.2	12259	26	Non-participating
28	29	504260	5102971	26.1	16969	68	Non-participating
41	42	496475	5096801	25.2	16198	53	Non-participating
20	28	505904	5103621	23.8	21891	62	Non-participating
13	25	506005	5107911	23.7	15309	75	Non-participating
12	24	506625	5109337	22.3	16608	75	Non-participating
29	30	506768	5102402	22.3	25128	68	Non-participating
38	39	504339	5097824	22.0	22314	69	Non-participating
39	40	504524	5097792	21.8	22855	69	Non-participating
11	23	507698	5110376	20.6	20413	75	Non-participating
40	41	504993	5096786	20.6	26146	69	Non-participating
31	32	507435	5100144	20.5	28342	69	Non-participating
30	31	508386	5100217	19.6	31338	68	Non-participating
19	27	509583	5104876	19.5	30120	75	Non-participating
36	37	508449	5099327	19.1	32234	69	Non-participating
37	38	507752	5096650	18.3	33715	69	Non-participating
43	44	511145	5108851	17.7	31483	75	Non-participating
44	45	511544	5098216	16.2	43012	69	Non-participating
45	46	511147	5096893	15.9	43274	69	Non-participating
46	18	488897	5108717	31.5	10078	13	Non-participating

*Receptor is located on a non-leased parcel, but the land owner has other parcels leased in the project

Shadow flicker modeling results at Merricourt for Layout v91 (V110-2.0)

Results for all receptors with more than one hour of shadow flicker per year.

Receptor ID (from Sound/Shadow Analysis)	Receptor ID (from Table 4/Figure 7)	Eastings [m]	Northing [m]	Shadow flicker v91[hours/yr]	Distance to Nearest Turbine [ft]	Nearest Turbine	Receptor Participation Status
6	2	497191	5110317	0	2115	30	Non-participating
17	7	493302	5105806	0	2719	19	Non-participating
9	4	500078	5108882	0	2158	78	Participating
14	14	500243	5106869	4.6	2711	60	Non-participating
15	5	495120	5108250	8.7	3112	33	Non-participating
22	9	495757	5105037	0	1942	44	Participating*
8	3	498719	5109392	0	2537	79	Participating
5	1	498236	5110200	0	2316	32	Non-participating
7	12	493436	5110464	0	3084	26	Non-participating
23	10	492488	5104255	3.9	3019	40	Non-participating
26	11	497902	5102858	13.7	1531	47	Participating

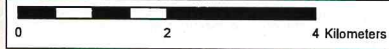
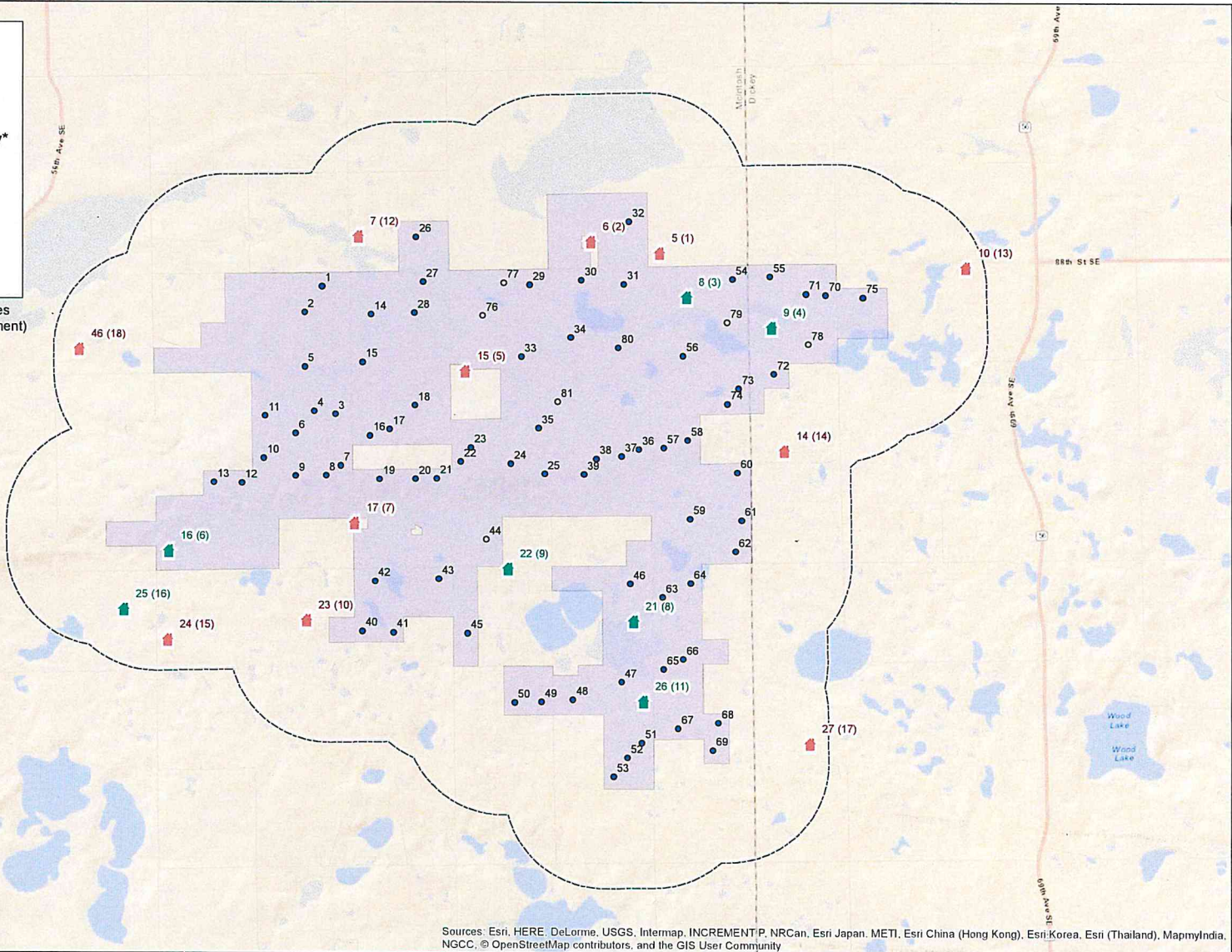
Turbines v91b

- Primary
- Alternate

Occupied Homes Within 1 Mile of Boundary*

- 🏠 Non-participating
- 🏡 Participating
- 📏 1 Mile Buffer of Project Boundary
- 🟪 Project Boundary

*Labeled with IDs from the Sound and Shadow Studies (and IDs from Table 4 and Figure 7 in Permit Amendment)



Sources: Esri, HERE, DeLorme, USGS, Intermap, INCREMENT P, NRCan, Esri Japan, METI, Esri China (Hong Kong), Esri Korea, Esri (Thailand), MapmyIndia, NGCC, © OpenStreetMap contributors, and the GIS User Community

Source: KLI, ESRI | C:\Projects\USA_NorthCentral\Merricourt05_GIS\052_MapDocs\OccupiedHomes_Merricourt.mxd | Last Updated 9/20/2017 by Rachel Clement

