



MONTANA-DAKOTA

UTILITIES CO.

A Division of MDU Resources Group, Inc.

400 North Fourth Street
Bismarck, ND 58501
(701) 222-7900

ORIGINAL

March 18, 2009

RECEIVED

MAR 18 2009

Executive Secretary
North Dakota Public Service Commission
State Capitol Building
Bismarck, ND 58505-0480

PUBLIC SERVICE COMMISSION

Re: Case No. PU-08-942
Application for a Certificate of Public
Convenience & Necessity for a 19.5 MW
Wind Project located in North Dakota

Montana-Dakota Utilities Co., a Division of MDU Resources Group, Inc., herewith files an original and seven (7) copies of the following information regarding the request for a Certificate of Public Convenience and Necessity for a 19.5 MW Wind Project located near Rhame, North Dakota filed in the above referenced case:

1. Affidavit of Andrea L. Stomberg.
2. A topographical map of the proposed Cedar Hills Wind Project Turbine Layout and the coordinates of the turbines.

Please acknowledge receipt by stamping or initialing the duplicate copy of this letter attached hereto and returning the same in the enclosed self-addressed, stamped envelope.

Sincerely,

Donald R. Ball
Vice President - Regulatory Affairs

Attachments

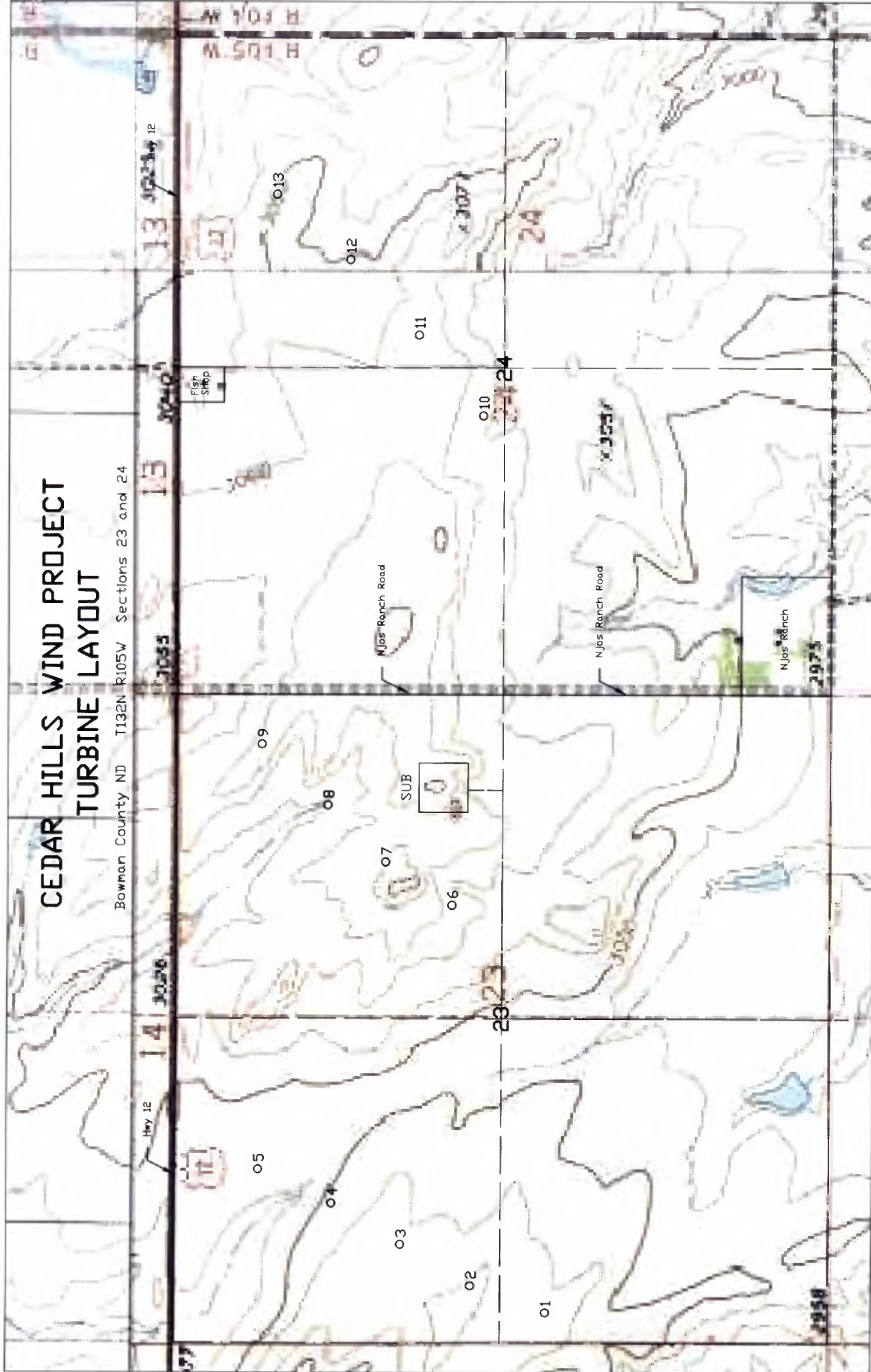
Cc: Daniel S. Kuntz

10 PU-08-942 Filed: 3/18/2009 Pages: 3
Map of Turbine Layout & Coordinates

Montana-Dakota Utilities Co., a Division of MDU Resources Group, Inc.

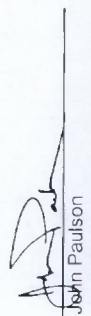
CEDAR HILLS WIND PROJECT TURBINE LAYOUT

Bowman County ND T132N R105W Sections 23 and 24



Name	Latitude	Longitude	Ground		AGL	Turbine AGE	From Bowman Municipal Airport	
			AMSL	Distance/Feet			Distance/Miles	Azimuth
TOWER 1	46° 14' 27.22" N	103° 47' 01.22" W	3030.8	390.0	3420.8	17.52	284° 45' 47"	
TOWER 2	46° 14' 33.20" N	103° 46' 58.12" W	3042.6	390.0	3432.6	17.51	285° 09' 31"	
TOWER 3	46° 14' 38.81" N	103° 46' 53.33" W	3027.7	390.0	3417.7	17.41	285° 40' 34"	
TOWER 4	46° 14' 44.35" N	103° 46' 48.59" W	2997.3	390.0	3387.3	17.43	285° 56' 12"	
TOWER 5	46° 14' 50.18" N	103° 46' 44.71" W	2990.9	390.0	3380.9	17.41	286° 20' 05"	
TOWER 6	46° 14' 34.72" N	103° 46' 14.07" W	3056.0	390.0	3446.0	16.87	285° 50' 26"	
TOWER 7	46° 14' 40.05" N	103° 46' 09.10" W	3082.7	390.0	3472.7	16.90	286° 04' 56"	
TOWER 8	46° 14' 44.68" N	103° 46' 02.56" W	3055.9	390.0	3445.9	16.84	286° 26' 46"	
TOWER 9	46° 14' 49.94" N	103° 45' 55.52" W	3080.0	390.0	3470.0	16.77	286° 51' 29"	
TOWER 10	46° 14' 32.21" N	103° 45' 18.00" W	3045.6	390.0	3435.6	16.21	286° 08' 08"	
TOWER 11	46° 14' 37.37" N	103° 45' 08.75" W	3064.6	390.0	3454.6	16.11	286° 34' 54"	
TOWER 12	46° 14' 42.87" N	103° 45' 00.08" W	3047.6	390.0	3437.6	16.02	287° 02' 55"	
TOWER 13	46° 14' 48.68" N	103° 44' 52.61" W	3048.8	390.0	3438.8	15.96	287° 31' 36"	




 John Paulson
 North Dakota RLS 3366

Coordinates NAD 83 (96) TriStation "Antelope"
 Elevation NAVD 27 BM H23