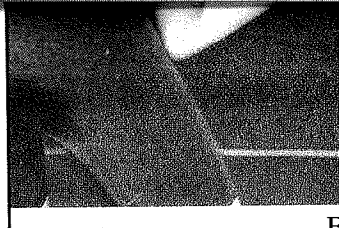


Casey Strong and Bryce Nitschke



Dillon Thorpe and Clayton Grueneich



# Public Notices

www.ndpublicnotices.com

# Bird Lovers can go nuts for

**VAN METER TOWNSHIP**  
 Van Meter Township will hold their Board of Equalization meeting Tuesday, April 6, 2009 at 8 p.m. at the Fireside in Ellendale  
 Brenda Sand, Clerk  
 (March 26 & April 2, 2009)

**VALLEY TOWNSHIP**  
 Valley Township will hold their Board of Equalization meeting Monday, April 13, 2009 at 1:00 p.m. The rescheduled meeting will follow the equalization meeting. Polls will close at 4:00 p.m. at the home of the clerk.  
 Dale Radermacher, Clerk  
 April 2 & 9, 2009)

**CITY OF ELLENDALE EQUALIZATION MEETING**  
 The city of Ellendale Board of Equalization will meet at 5:00 p.m. Monday, April 13, 2009 at City Hall.  
 Each taxpayer has the right to appeal before the Board of Equalization and petition for correction of assessment.  
 (April 2 & 9, 2009)

**SPRING VALLEY TOWNSHIP**  
 The Spring Valley Township equalization meeting will be held Monday, April 13, 2009 from 7:30 p.m. to 8:30 p.m. at the home of the clerk/treasurer. The board of supervisors will conduct any business to come before the board following the equalization meeting. The zoning commission will meet at 8:30 p.m.  
 Matt Herman, Clerk/Treasurer  
 (April 2, 2009)

**ELM TOWNSHIP**  
 Elm Township will hold their equalization meeting Monday, April 13, 2009 at the Elm Township Hall at 8:00 p.m.  
 Kurt Olson, Clerk  
 (April 2 & 9, 2009)

**WHITESTONE TOWNSHIP**  
 Whitestone Township Board of Equalization will meet April 13, 2009 at 8:00 p.m. at the home of the clerk.  
 Darwin Nill, Clerk  
 (April 2 & 9, 2009)

**ELDEN TOWNSHIP**  
 Elden Township Board of Equalization will meet from 7:30-8:30 p.m. Tuesday, April 14, 2009 at the Cal and Rita Dathe home.  
 Marcia Wagner, Clerk  
 (April 2 & 9, 2009)

**EXCESS MILL LEVY NOTICE OF SPECIAL ELECTION**  
 Notice is hereby given that on April 14, 2009 at the polling place of Cal Dathe home in the Township of Elden, County of Dickey, an election will be held in which the following question shall be submitted to the electors of Elden Township. Shall Elden Township levy taxes for a five year period commencing in 2009, which shall exceed the legal limit by \$8260.68, so that the taxes levied, instead of being \$8260.68, which is the limit authorized by law, shall be \$16,521.37? ( ) Yes or ( ) No.  
 Be it known that the total income of Elden Township from the first day of January 2008 to the last day of

December, 2008 was \$17,234.73 and that the total warrants issued for said period amounted to \$16,363.80.

Be it further known that the expected expenditures for each year of a five year period commencing in 2009 are more than \$19,166.12 spent in 2007.

Be it further known that the legal tax levy of 18 mills which produced \$8260.68 in income in 2008 is the legal maximum but that a 100 percent excess levy is authorized for a five year period. If 60 percent of the qualified electors shall approve the above stated question, the levy shall be increased the amount of 18 mill upon each dollar of taxable valuation, which increase would have produced \$8260.68 in additional income at 2008 valuation.

Be it further known that said election will be opened at 8:30 o'clock p.m. and will continue open until 9:30 o'clock p.m. of said April 14, 2009.

**SPECIAL ELECTION-ELDEN TOWNSHIP**  
**INSTRUCTION TO VOTER:** Mark a cross (x) or other mark in the square opposite the word "yes" if you are in favor of this levy. Mark a cross (x) or other mark in the square opposite the word "no" if you are not in favor of this levy.

Shall Elden Township levy taxes for a five year period commencing in 2009 which shall exceed the legal limit by \$8260.68, so that the taxes levied, instead of being \$8260.68 which is the limit authorized by law, shall be \$16,521.37? ( ) Yes or ( ) No.

By order of the Board of Supervisors of Elden Township. Dated at Ellendale, North Dakota this 18th day of March, 2009

Marcia C. Wagner, Clerk  
(April 2 & 9, 2009)

**STATE OF NORTH DAKOTA PUBLIC SERVICE COMMISSION**  
 Rough Rider Wind I, LLC  
 175 MW Wind Farm - Dickey County  
 Siting Application  
 Case No. PU-09-84  
**NOTICE OF FILING AND NOTICE OF HEARING**  
 March 11, 2009

On February 19, 2009, Rough Rider Wind I, LLC filed an application for a certificate of site compatibility to authorize construction of a 175 MW

Rough Rider I Wind Energy Center consisting of up to 116 wind turbine generators and associated facilities in Dickey County, North Dakota as shown on the attached map. The Commission finds the application is complete conditioned on Rough Rider Wind I, LLC filing a map detailing finalized proposed locations for turbines and related facilities on or before April 21, 2009.

A Public Hearing on the application is scheduled to begin April 28, 2009 at 10:00 a.m. CDT in the Fireside Restaurant at 414 1st Ave. N., Ellendale, ND 58436. The issues to be considered are:

1. Will the location, construction, and operation of the proposed facilities produce minimal adverse effects on the environment and upon the welfare of the citizens of North Dakota?
2. Are the proposed facilities compatible with the environmental preservation and the efficient use of resources?

3. Will the proposed facility locations minimize adverse human and environmental impact while ensuring continuing system reliability and integrity and ensuring that energy needs are met and fulfilled in an orderly and timely fashion?

For more information contact the Public Service Commission, State Capitol, Bismarck, North Dakota 58505, 701-328-2400; or Relay North Dakota 1-800-366-6888 TTY. If you require any auxiliary aids or services, such as readers, signers, or Braille materials please notify the Commission.

**PUBLIC SERVICE COMMISSION**  
 Tony Clark, Commissioner  
 Kevin Cramer, President  
 Brian P. Kalk, Commissioner  
 (March 26 & April 2, 2009)

The battle begins every time a feeder goes up; homeowner versus squirrel, and it's usually the squirrel who wins.

For many outdoor wildlife lovers it seems nearly impossible to keep these cunning rascalions from raiding their bird feeders. They've tried the squirrel-proof feeders which the relentless squirrels manage to tackle. Placing feeders out of squirrels' reach also seems like a logical solution, but it is much easier said than done.

Although victory over the squirrels may appear impossible, there is a way to feed your beloved birds without the disturbance caused by these crafty creatures. Ever heard the phrase, "If you can't beat 'em, join 'em"? It's the

perfect solution to a pesky relationship with furry backyard foes, and one will soon have homeowners putting squirrels into the category of outdoor pets.

Squirrels are hearty eaters, so not offer them a feast all their own. Outdoor pet food producers such as Wild Delight make mixes specifically designed for squirrels (such as Wild Delight Squirrel Food) that contain sunflower seed, and whole peanut things that squirrels love to munch. It is typically offered in a platform feeder or fed on the ground, but however food is put out; the trick is to keep away from bird feeders. When bird feeders are offered their own food, they are much less likely to bother your bird feeders.

Squirrels also love corn that is on the cob. This "ear corn" can be affixed to a tree to keep squirrels off tree trunks and away from bird feeders. To prevent a mess, go with a premium brand like Wild Delight Corn On The Cob that has a low moisture content to help prevent molding.

Along with offering squirrels a new dining experience, bird wa

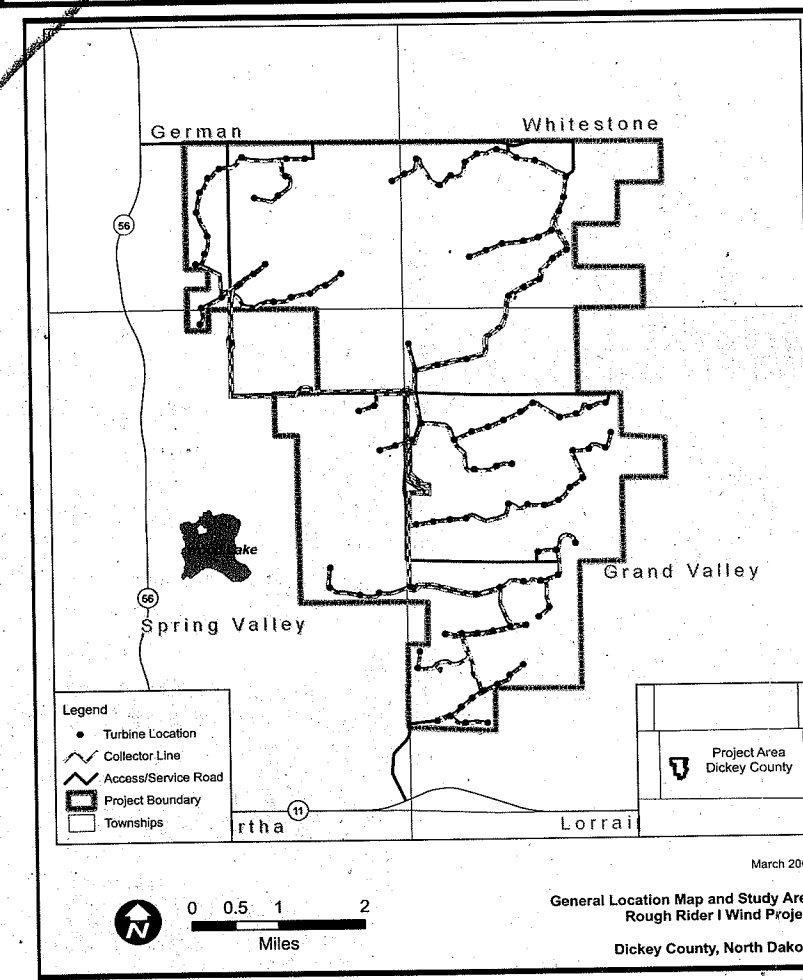
## MOWING BIDS

The City of Ellendale is asking for bids from individuals who are interested in mowing City and privately owned lots as designated by the City.

Bids are to be submitted on a mowing price for one time per lot. A lot is approximately 50 ft. by 150 ft.

If there are lots which the bidder is especially interested in mowing, state that information in your bid. Must be over 16 years of age to bid. Bidders are considered independent contractors and the City Workman's Comp. does not apply to bidders.

Bids must be in the City Auditor's office by 5:00 p.m. Monday, April 13, 2009.



## BASEBALL

Baseball & Brand  
 June 25-30

See the Minnesota Twins play Milwaukee, St. Louis & Kansas City. Also, spend 2 days touring Brandeis seeing a comedy/country show, rock show with a tribute to the Beatles.

\$925/person based on double hotel occupancy.

Coach bus tour originates in Redwood Falls, MN. To request a brochure, please call (507) 627-2722 or visit our website.



ITD  
 Information Technology Department

Careers  
 With a Purpose!

Contact us at www.itd.nd.gov

4/2 Ellendale