

Hamre, John G.

From: Bauske, Shelly A.
Sent: Tuesday, July 07, 2009 1:07 PM
To: Hamre, John G.
Subject: FW: Preliminary turbine locations - PU-09-151
Attachments: BisonTurbineMap_AnsiC.PDF

From: David Moeller (ALLETE) [mailto:dmoeller@allete.com]
Sent: Tuesday, July 07, 2009 12:25 PM
To: -Info-Public Service Commission
Cc: Lein, Jerry R.; Jim Atkinson (ALLETE); Ron Gullicks (MP); 'Moreira Bruce B.'; Mattson, Todd
Subject: Preliminary turbine locations - PU-09-151

VIA E-MAIL AND U.S. MAIL

Mr. Jerry Lein
North Dakota Public Service Commission
600 E. Boulevard Ave., Dept. 408
Bismarck, North Dakota 58505-0480
RE: Case No. PU-09-151
Supplemental Filing

Dear Mr. Lein,

You requested that Minnesota Power, an operating division of ALLETE, Inc., provide preliminary turbine locations for its Bison I Wind Project. A map showing those preliminary turbine locations along with delineated wetlands and cultural resources sites is attached. This supplement to Minnesota Power's Application is being filed electronically to facilitate docketing prior to the Commission's hearing on July 8, 2009. The original and ten copies will be mailed.

In addition, as we discussed, Minnesota Power and its consultants are evaluating whether the project will have any significant impact on wetlands and cultural resources. To that extent, Minnesota Power will submit prior to the public hearing an abridged wetlands delineation report and a preliminary cultural resources inventory. Minnesota Power is working with the U.S. Army Corp of Engineers to reach a final determination on whether any jurisdictional wetlands will be impacted by this project that require a permit. Minnesota Power is also working with the North Dakota State Historic Preservation Office to determine whether any cultural resources will be impacted. Minnesota Power will work with both agencies so that the status of any required permitting will be addressed before the public meeting.

Please let us know if you have any additional questions.

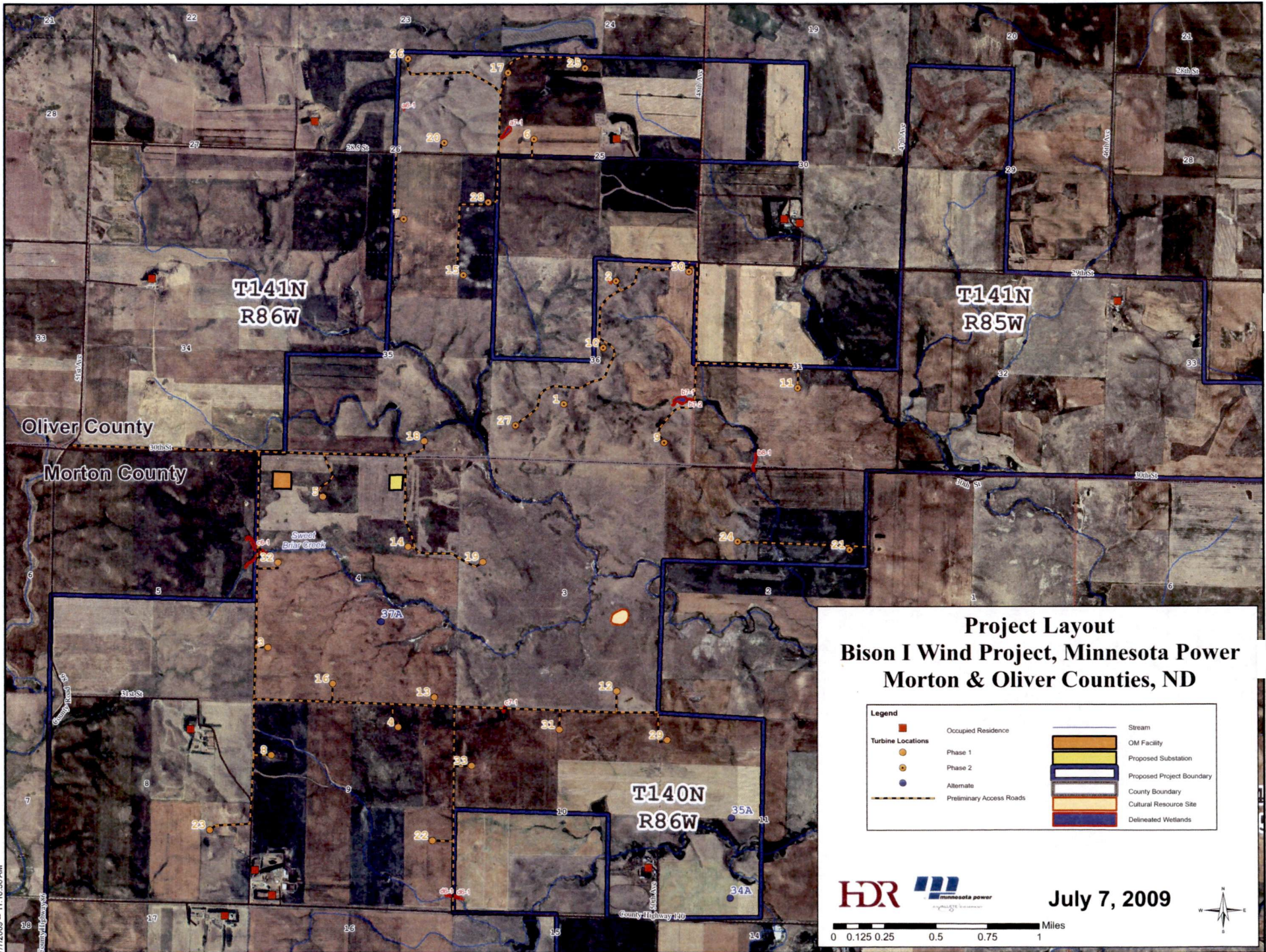
Sincerely,

David R. Moeller

David R. Moeller
Attorney
Minnesota Power
30 West Superior Street
Duluth, MN 55803

12 PU-09-151 Filed: 7/7/2009 Pages: 3
Email re. Map re. Wetland & Cultural Resource
Impacts and Turbine Locations

(218) 723-3963
dmoeller@allete.com



Project Layout Bison I Wind Project, Minnesota Power Morton & Oliver Counties, ND

Legend	
Occupied Residence	Stream
Turbine Locations	OM Facility
Phase 1	Proposed Substation
Phase 2	Proposed Project Boundary
Alternate	County Boundary
Preliminary Access Roads	Cultural Resource Site
	Delineated Wetlands



July 7, 2009

