



September 2, 2009

Darrell Nitschke
Executive Secretary
North Dakota Public Service Commission
600 E. Boulevard Ave., Dept. 408
Bismarck, North Dakota 58505-0480

RE: Bison 1 Wind Project
Oliver/Morton Counties
Siting Application
Case No. PU-09-151

Dear Mr. Nitschke:

Attached please find an original and 10 copies of Minnesota Power's late-filed Exhibit 2, which was requested at the public hearing held on August 25, 2009.

If you have any questions, or need additional information, please contact me at the above-listed number.

Sincerely,

A handwritten signature in black ink that reads 'David R. Moeller'.

David R. Moeller

c: Ron Gullicks, Minnesota Power
Jim Atkinson, Minnesota Power

30 PU-09-151 Filed 09/02/2009 Pages: 3
Late Filed Exhibit 2 from Aug. 25, 2009 Hearing
Allete, Inc.
David R. Moeller, Attorney

**BISON I Wind Energy Center
 SWT-2.3-101 75.9 MW
 Site Layout**

Client
 Jim Atkinson
 Minnesota Power





Project Description
 BISON I Wind Energy Center
 SWT-2.3-101 75.9 MW Layout
 with NDGS Lignite Reserves
 1:72,000 scale

Location: Morton/Oliver County, ND
Project #: 20091680


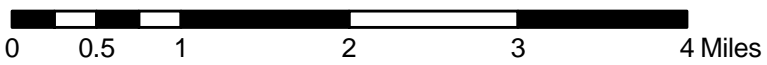
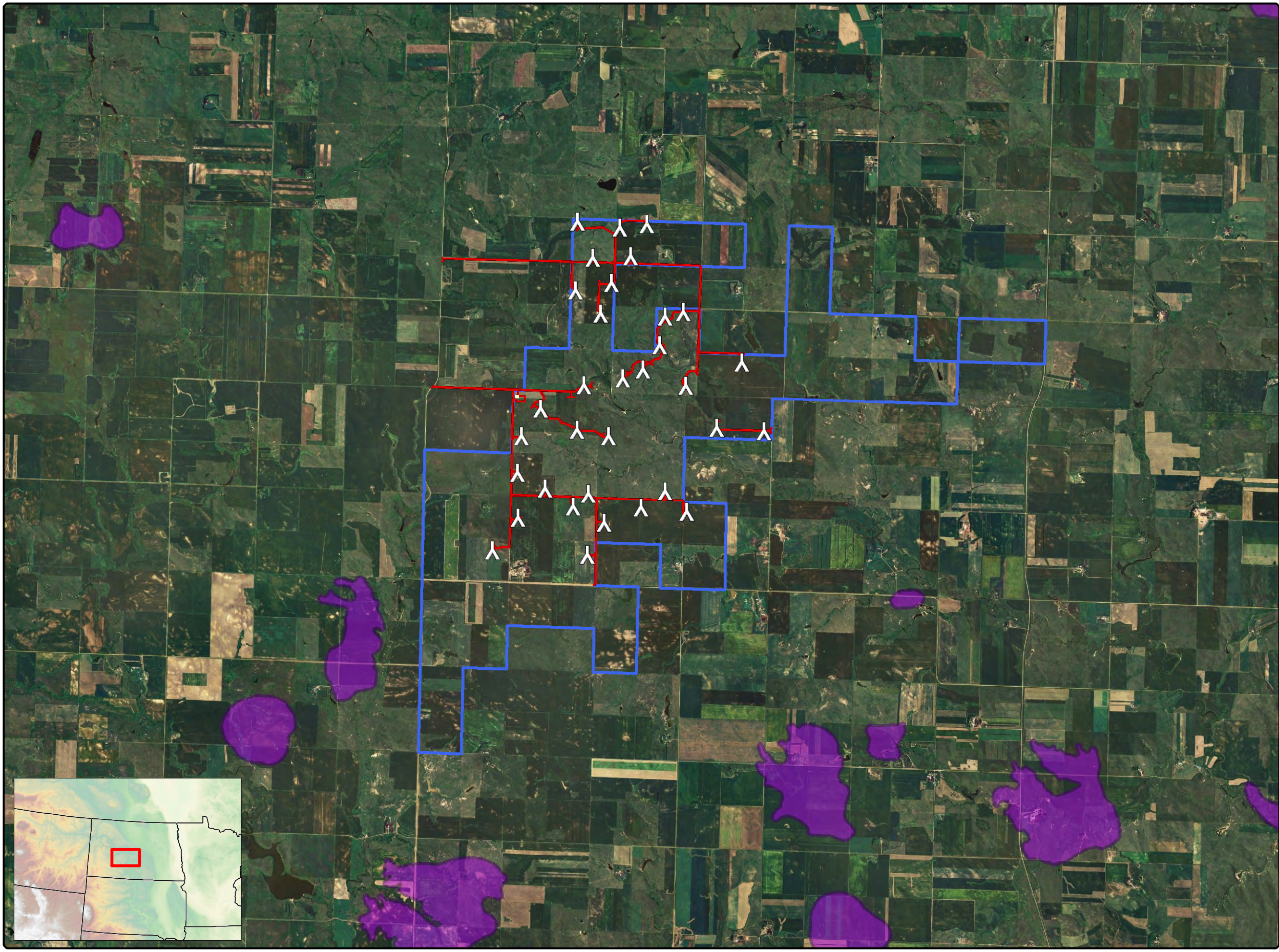
Issue Dates

#	Description	Date
1	Initial Draft	2009.09.02

Drawn By: JR Checked By: JH

- Legend*
-  BISON I Wind Energy Center
 -  BISON I Access Roads
 -  BISON I Project Area
 -  NDGS Lignite Reserves

COPYRIGHT:
 All maps, plans, specifications, computer files, field data, notes and other documents and instruments prepared by EAPC as instruments of service shall remain the property of EAPC. EAPC shall retain all common law, statutory and other reserved rights, including the copyright thereto.

Neither EAPC nor any person acting on their behalf: (a) makes any warranty, express or implied, with respect to the use of any information disclosed on this drawing; or (b) assumes any liability with respect to the use of any information or methods disclosed on this drawing. Any recipient of this document, by their acceptance or use of this document, releases EAPC, its parent corporations and its affiliates, from any liability for direct, indirect, consequential, or special loss or damage whether arising in contract, warranty, express or implied, tort or otherwise, and irrespective of fault, negligence, and strict liability. The responsibilities for the applications and use of the material contained in this document remain solely with the client.

**BISON I Wind Energy Center
 SWT-2.3-101 75.9 MW
 Site Layout**

Client
 Jim Atkinson
 Minnesota Power





Project Description
 BISON I Wind Energy Center
 SWT-2.3-101 75.9 MW Layout
 with NDGS Lignite Reserves
 1:72,000 scale

Location: Morton/Oliver County, ND
Project #: 20091680

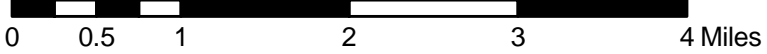
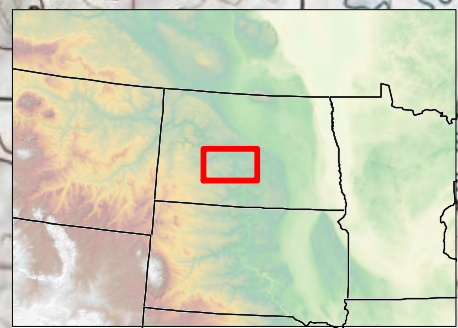
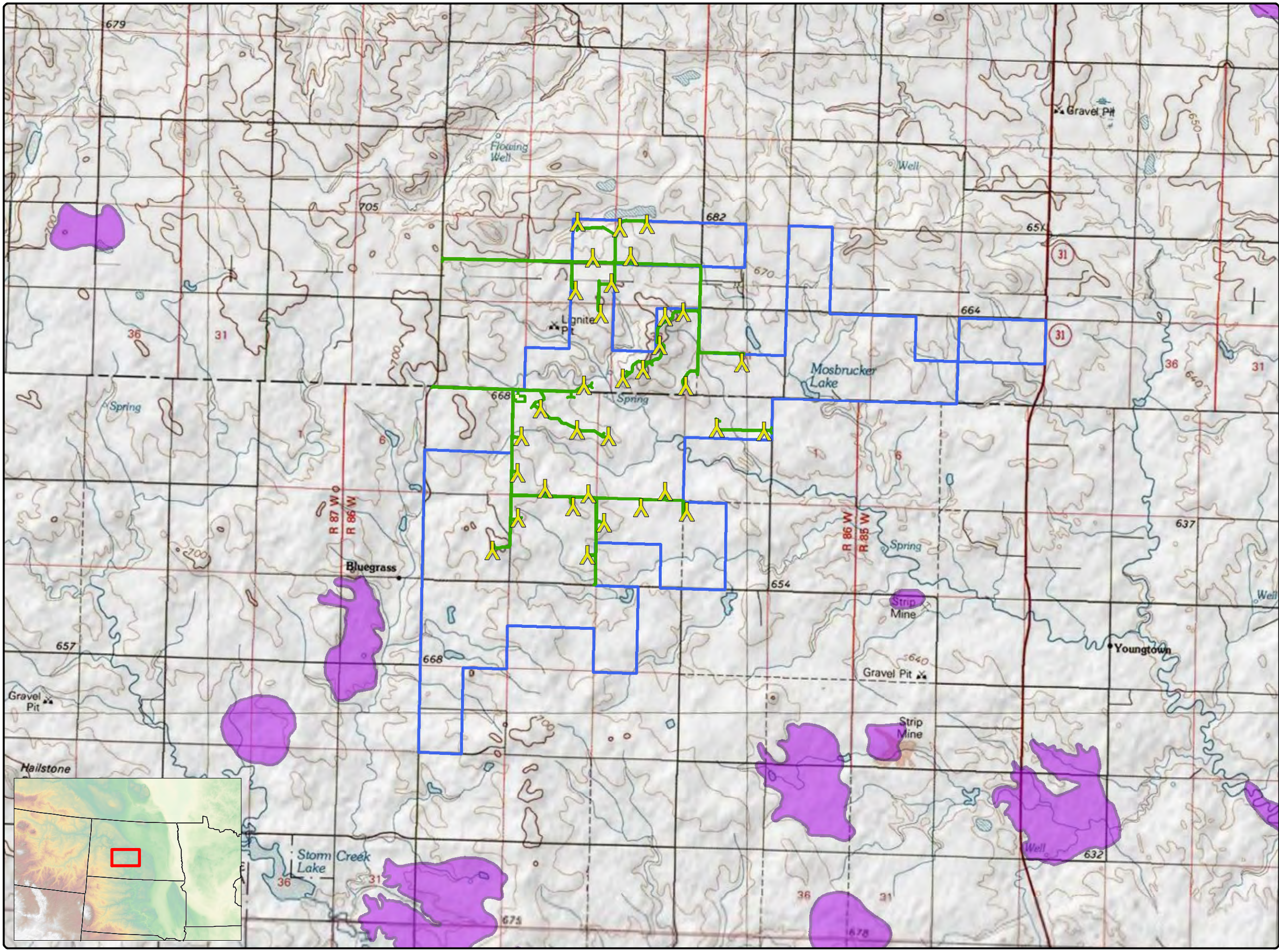
Issue Dates

#	Description	Date
1	Initial Draft	2009.09.02

Drawn By: JR Checked By: JH

- Legend*
-  BISON I Wind Energy Center
 -  BISON I Access Roads
 -  BISON I Project Area
 -  NDGS Lignite Reserves

COPYRIGHT:
 All maps, plans, specifications, computer files,
 field data, notes and other documents and
 instruments prepared by EAPC as instruments
 of service shall remain the property of EAPC.
 EAPC shall retain all common law, statutory
 and other reserved rights, including the
 copyright thereto.



Neither EAPC nor any person acting on their behalf: (a) makes any warranty, express or implied, with respect to the use of any information disclosed on this drawing; or (b) assumes any liability with respect to the use of any information or methods disclosed on this drawing. Any recipient of this document, by their acceptance or use of this document, releases EAPC, its parent corporations and its affiliates, from any liability for direct, indirect, consequential, or special loss or damage whether arising in contract, warranty, express or implied, tort or otherwise, and irrespective of fault, negligence, and strict liability. The responsibilities for the applications and use of the material contained in this document remain solely with the client.