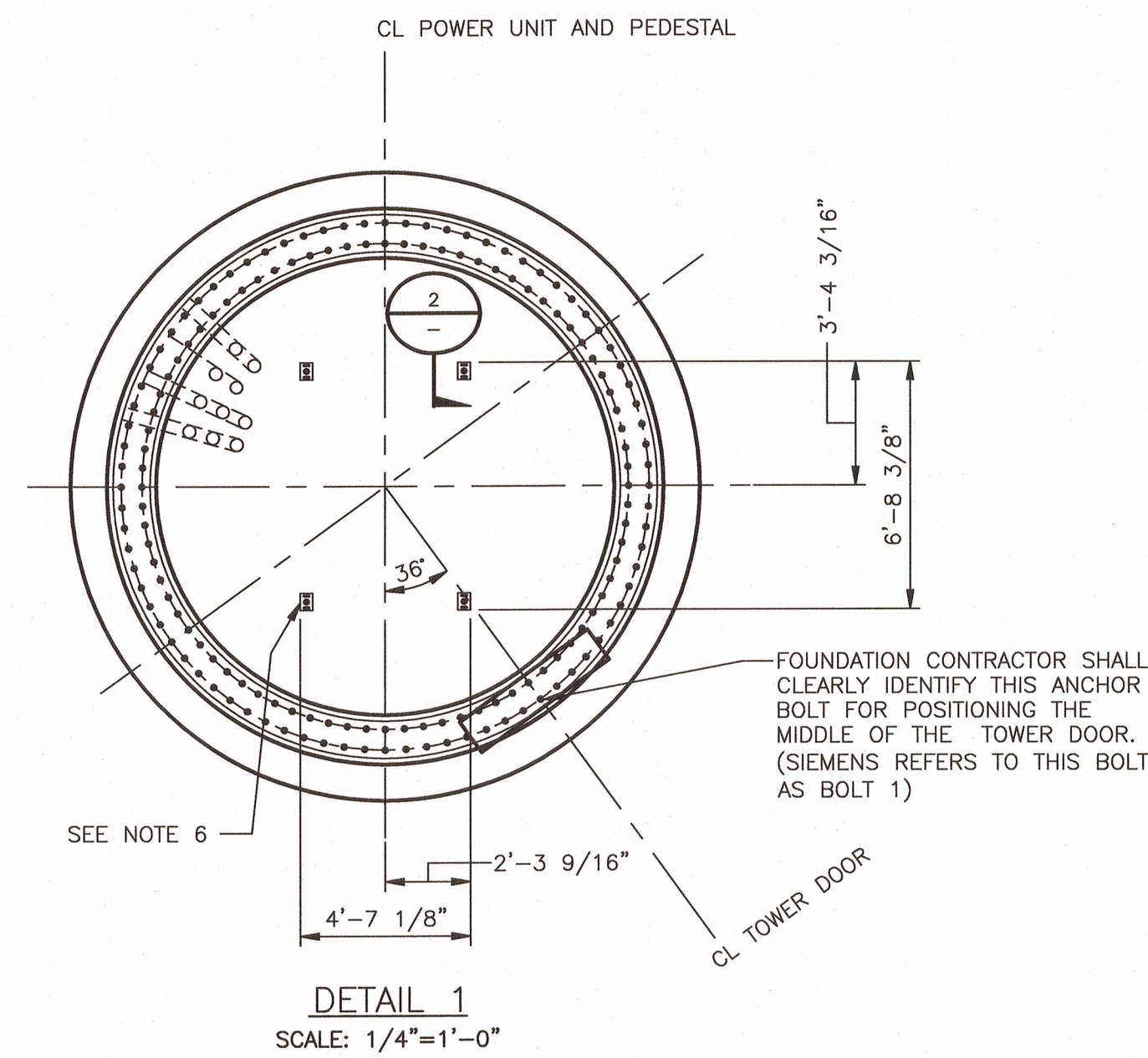
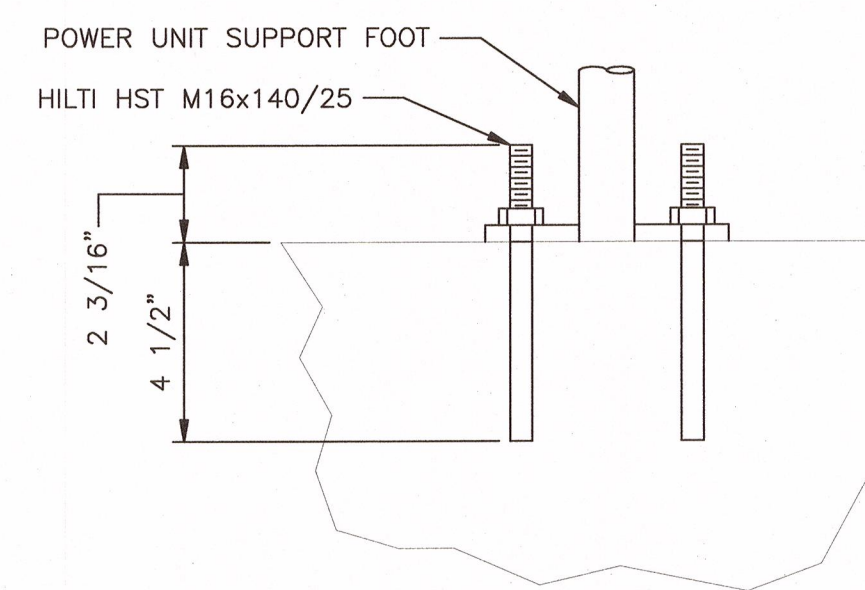


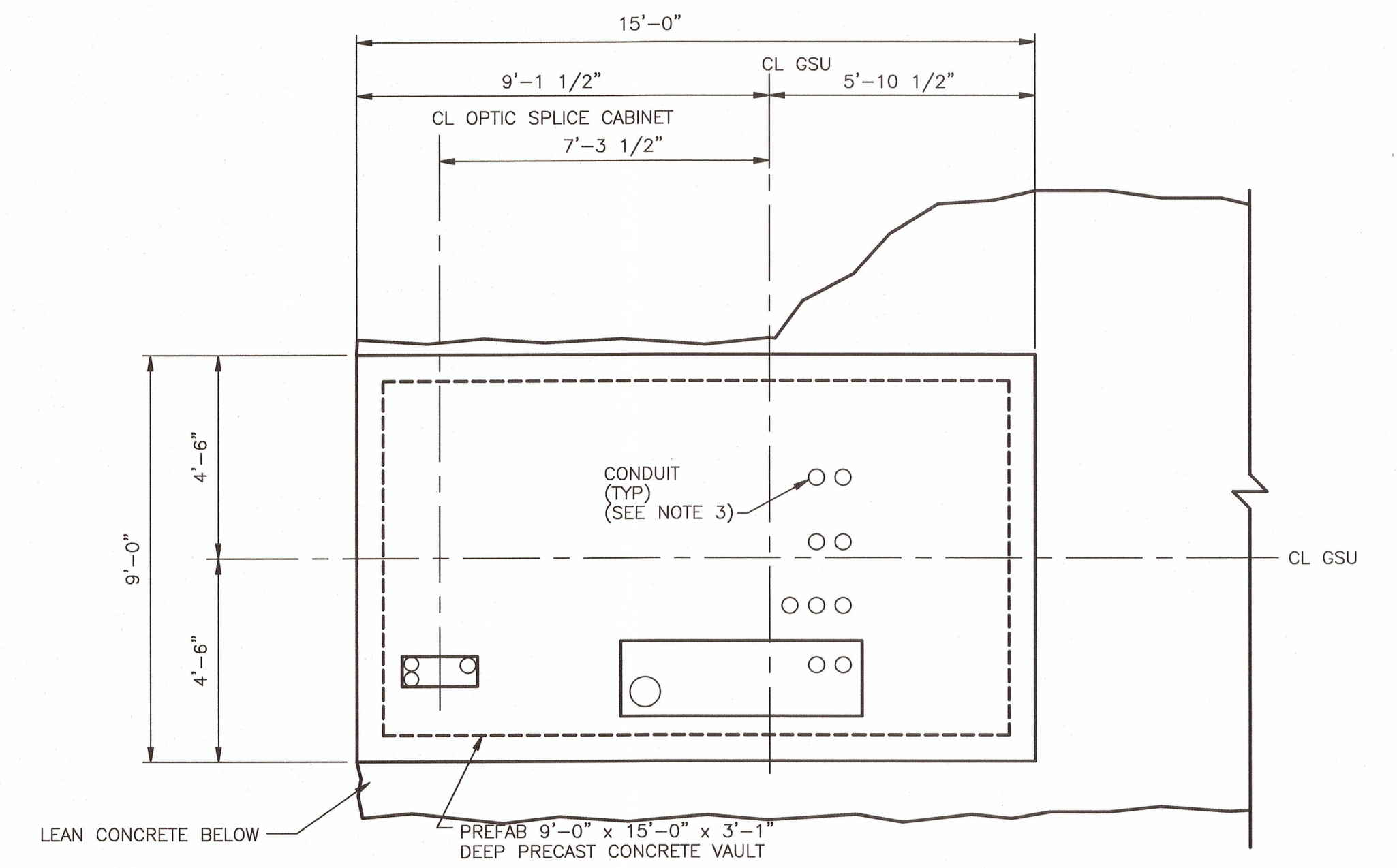
WIND TURBINE GENERATOR (WTG) EMBEDDED CONDUIT PLAN
SCALE: 3/16"=1'-0"



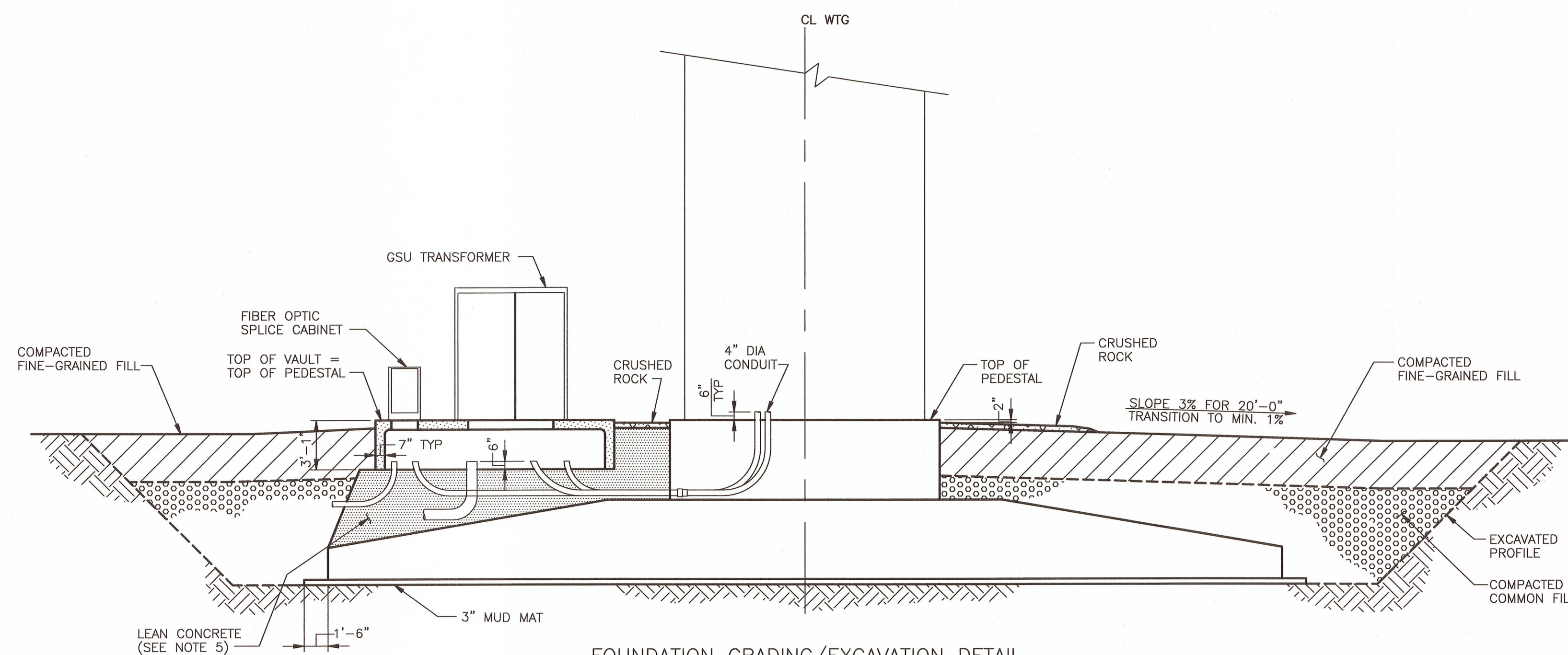
DETAIL 1
SCALE: 1/4"=1'-0"



SECTION 2
SCALE: 3"=1'-0"



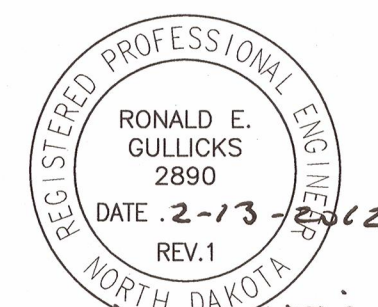
TRANSFORMER VAULT PLAN
SCALE: 3/8"=1'-0"



FOUNDATION GRADING/EXCAVATION DETAIL
SCALE: 3/16"=1'-0"

NOTES

- SEE DRAWING 1TGU-S5008 FOR SPECIFICATIONS AND GENERAL NOTES.
- SEE DRAWING 1TGU-S5009 FOR DESIGN DATA.
- FOR LOCATION OF CONDUIT REFER TO B&V DRAWING 165233-1-000-E2302.
- FOR LOCATION AND SIZE OF ANCHORS REFER TO GSU TRANSFORMER MANUFACTURER DRAWINGS.
- LEAN CONCRETE BENEATH THE GSU AND DISCONNECT SWITCH FOUNDATION AND IN AREAS USED IN CONJUNCTION WITH THE COLLECTOR CABLES SHALL HAVE A MAXIMUM THERMAL RESISTIVITY OF 60 RHO.
- POWER UNIT SUPPORT FEET SHALL BE SUPPLIED BY TURBINE MANUFACTURER SEE SIEMENS DRAWINGS 1006932 & 1016492. ANCHORS SHALL BE PROVIDED BY CONTRACTOR.



NO.	DATE	REVISION DESCRIPTION	BY	APPROVED	NO.	DATE	REVISION DESCRIPTION	BY	APPROVED
1	2-9-12	CONSTRUCTION REVISIONS, W.O.#17480	NJG	[Signature]	0	03-09-11	ISSUED APPROVED FOR CONSTRUCTION	SJU	[Signature]

BLACK & VEATCH
CORPORATION
I HEREBY CERTIFY THAT THIS DOCUMENT WAS PREPARED BY ME OR UNDER MY DIRECT SUPERVISION AND THAT I AM A DULY REGISTERED PROFESSIONAL ENGINEER UNDER THE LAWS OF THE STATE OF NORTH DAKOTA.
DATE: 3/15/11
DRAWN: [Signature]
CHECKED: [Signature]
DATE: 03-15-11
SCALE: AS SHOWN
PROJECT NUMBER: 165233-1TGU-S5011
SHEET NO.: PE-1973

minnesota power
BISON WIND GENERATING FACILITY
NEW SALEM, ND
BISON WIND ENERGY PROJECT PHASE 1B
WIND TURBINE FOUNDATION
EMBEDDED CONDUIT PLAN
SHEET REV. 1
165233-1TGU-S5011