

Fahn, Patrick J.

From: Greg_Jacobsen@pecanpipeline.com
Sent: Monday, December 14, 2009 10:23 AM
To: Fahn, Patrick J.
Cc: Cary_Loughman@eogresources.com
Subject: Map of hawthorn Oil corridor for PSC
Attachments: RailProductCorridorMap.pdf; Hawthorn pipeline.dbf; Hawthorn pipeline.prj; Hawthorn pipeline.shp; Hawthorn pipeline.shx; RROilLine_Buffer.shx; RROilLine_Buffer.shp; RROilLine_Buffer.prj; RROilLine_Buffer.dbf

Follow Up Flag: Follow up
Flag Status: Flagged

Mr. Fahn, in compliance with paragraph 22 of PSC Order Granting Corridor Certificate and Route Permit dated Dec. 10, 2009, PSC Case No. PU-09-153, attached are the electronic files and a paper copy, in pdf format, of the Hawthorn Oil pipeline corridor. Please let me know if there is additional information requested. Thank you.

Greg Jacobsen
Sr. Landman
office- 303-824-5436
cell- 303-242-1054
greg_jacobsen@pecanpipeline.com

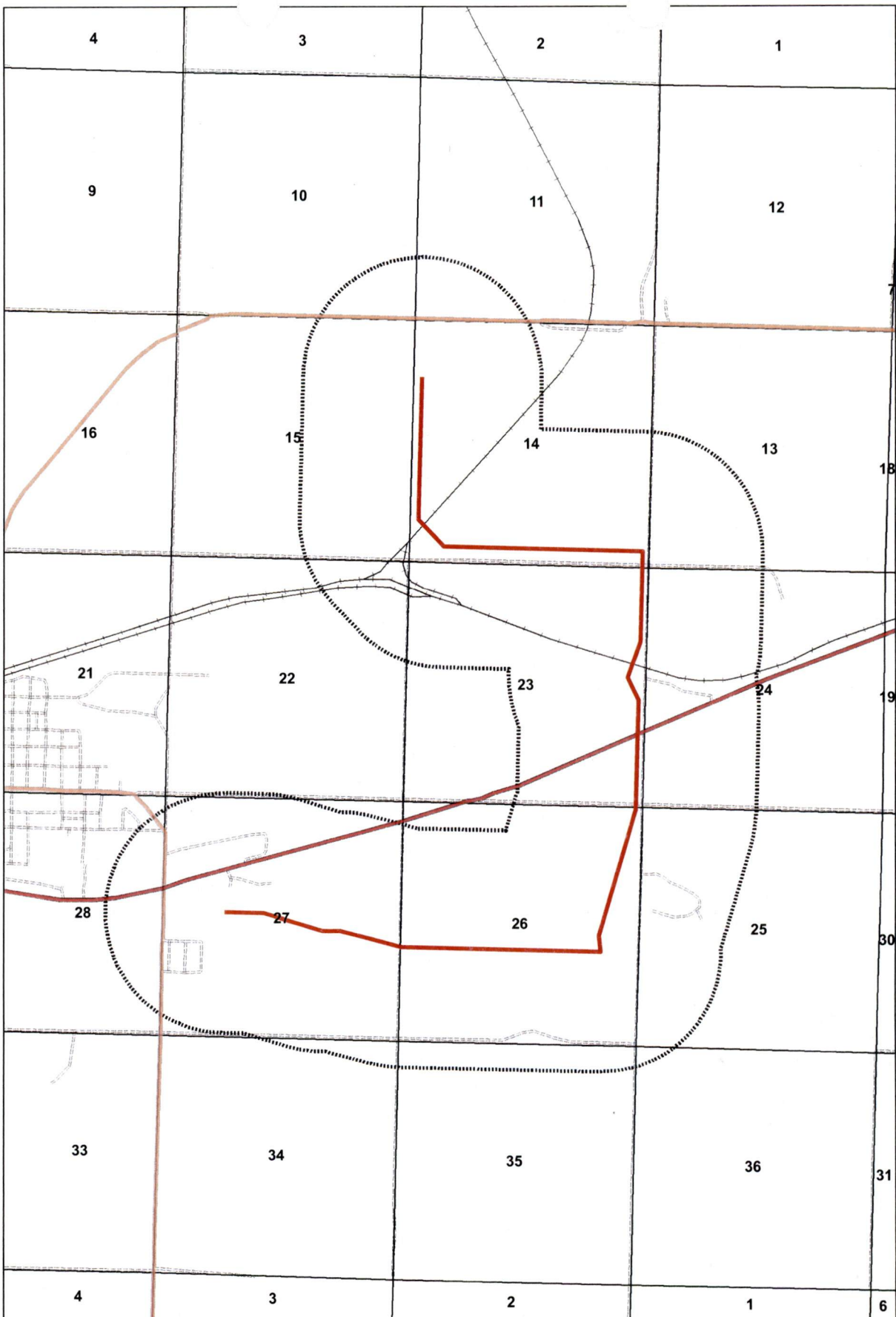
----- Forwarded by Greg Jacobsen/EOGResources on 12/14/2009 09:16 AM -----

From: Rick Nies/EOGResources
To: Greg Jacobsen/EOGResources@EOGResources
Date: 12/14/2009 08:08 AM
Subject: Re: Map of hawthorn Oil corridor for PSC

From: Greg Jacobsen/EOGResources
To: Rick Nies/EOGResources@EOGResources
Cc: Cary Loughman/EOGResources@eogresources, Jodie Davis/EOGResources@eogresources
Date: 12/11/2009 07:35 AM
Subject: Map of hawthorn Oil corridor for PSC








45 PU-09-153 Filed: 12/14/2009 Pages: 3
Email Compliance Filing – Order Para. 22

Good morning Rick. Hawthorn Oil received an Order from the ND PSC allowing construction of the Hawthorn Oil line. One of the requirements of the PSC is that Hawthorn Oil Transportation (North Dakota) Inc. provide a map of the corridor in both paper and electronic forms. The "corridor" is the one-half mile area on either side of the right of way centerline. The electronic form must be a version that can be imported in to ESRI GIS mapping software. You probably have this already so hopefully this will not put a burden on you. Let's talk when you have a moment. Thank you.



2,640 1,320 0 2,640 Feet

Legend

-  Hawthorn pipeline
-  Highway
-  Major Road
-  Local Road
-  Minor Road
-  Other Road
-  One Mile Wide Corridor



**Hawthorn Oil and Corridor and Route Map
T156N, R91W Sections 27,26,23,14
Mountrail County North Dakota**

