

TEN YEAR PLAN: 2010-2020
CPV Ashley Renewable Energy Company, LLC

In accordance with Section 49-22-04 of the North Dakota Century Code and Chapter 69-06-02-01 of the North Dakota Administrative Code, CPV Ashley Renewable Energy Company, LLC (“CPV”), submits the following Ten Year Plan for years 2010 through 2020.

- (1) A description of the general location, size, and type of all facilities to be owned or operated by the utility during the ensuing ten years, as well as those facilities to be removed from service during the ten-year period.

CPV does not currently own or operate any generation or transmission facilities in North Dakota. The only facility that CPV plans to construct in the next ten years is the Ashley Wind Energy Project, an up to approximately 200.1 megawatt (“MW”) wind energy conversion facility. The Ashley Wind Energy Project site consists of approximately 17,400 acres of privately owned land located approximately six miles north of the town of Ashley in McIntosh County, North Dakota. The Ashley Wind Energy Project’s output will be sold to the Tennessee Valley Authority (“TVA”) pursuant to a 20-year power purchase agreement. Construction on the Ashley Wind Energy Project is anticipated to begin as early as mid-2011 and the facility is expected to be commercially operational by the end of 2012. CPV has filed with the Commission an Application for a Certificate of Site Compatibility for the Ashley Wind Energy Project in McIntosh County, North Dakota (Case No. PU-09-370).

As noted above, CPV does not currently own or operate any facilities and, as such, does not own or operate any facilities that will be removed from service during the next ten years.

- (2) An identification of the location of the tentative preferred site for all energy conversion facilities and the tentative location of all transmission facilities on which construction is intended to be commenced within the ensuing five years and such other information as may be required by the commission. The site and corridor identification shall be made in compliance with the criteria published by the commission pursuant to section 49-22-05.1.

The Ashley Wind Energy Project is the only energy conversion facility that CPV plans to construct during the next five years. As noted previously, construction on the Ashley Wind Energy Project is anticipated to begin as early as mid-2011. The proposed location of the Ashley Wind Energy Project is depicted in Figure 1, attached hereto. As set forth in CPV’s Application for a Certificate of Site Compatibility, the proposed location for the Ashley Wind Energy Project will comply with all siting criteria set forth in Section 69-06-08-01 of the North Dakota Administrative Code. Additional information regarding the proposed location of the Ashley Wind Energy Project is set forth in Sections 1.3.1 and 5.1 of the Application for a Certificate of Site Compatibility.

CPV does not plan to construct any transmission facilities within the next five years.

- (3) A description of the efforts by the utility to coordinate the plan with other utilities so as to provide a coordinated regional plan for meeting the utility needs of the region.

CPV has an application pending before the Midwest Independent Transmission Systems Operator (“MISO”) for interconnection of 200 MW of wind generation at the Montana-Dakota Utilities (“MDU”) 230 kilovolt (“kV”) transmission line, which crosses the site proposed for the Ashley Wind Energy Project. Construction of a new high voltage transmission line will not be required in order to interconnect the Ashley Wind Energy Project, since the Project substation will be able to tie directly into the existing MDU 230 kV transmission line. The CPV Interconnection Application has been filed per the MISO Business Practice Manual 015 for Generator Interconnection. This application and MISO’s administration of the application is consistent with its Open Access Transmission, Energy and Operating Reserves Market Tariff, as approved by the Federal Energy Regulatory Commission, and per the operating policies of the Electric Reliability Organization designed to facilitate the administration of efficient energy markets.

- (4) A description of the efforts to involve environmental protection and land-use planning agencies in the planning process, as well as other efforts to identify and minimize environmental problems at the earliest possible stage in the planning process.

Since early in the planning process for the Ashley Wind Energy Project, CPV has been working with Local, State and Federal agencies and authorities to identify and minimize any potential environmental, cultural resource and/or land-use planning concerns. CPV is currently seeking regulatory approval for the Ashley Wind Energy Project at both the State and Federal levels. As noted previously, at the State level, CPV has submitted an Application for a Certificate of Site Compatibility for construction of the Ashley Wind Energy Project. At the Federal level, CPV is undergoing a Federal review process. TVA is the lead agency for this Federal review process, which will include a National Environmental Policy Act review, Endangered Species Act Section 7 consultation, and a National Historic Preservation Act Section 106 consultation.

Additional information regarding CPV’s agency contacts and efforts to identify and minimize any environmental issues presented by the Ashley Wind Energy Project is set forth in Sections 8.0 and 10.11 of its Application for a Certificate of Site Compatibility.

- (5) A statement of the projected demand for the service rendered by the utility for the ensuing ten years and the underlying assumptions for the projection, with that information being as geographically specific as possible, and a description of the manner and extent to which the utility will meet the projected demands.

CPV responded to a Request for Proposals issued by TVA, whereby TVA sought output from renewable generation sources to satisfy its need for additional renewable energy. TVA selected CPV’s proposal, and the entire output of the Ashley Wind Energy Project will be sold to TVA pursuant to a power purchase agreement.

Additional information regarding the need for the Ashley Wind Energy Project is set forth in Section 2.0 of CPV's Application for a Certificate of Site Compatibility.

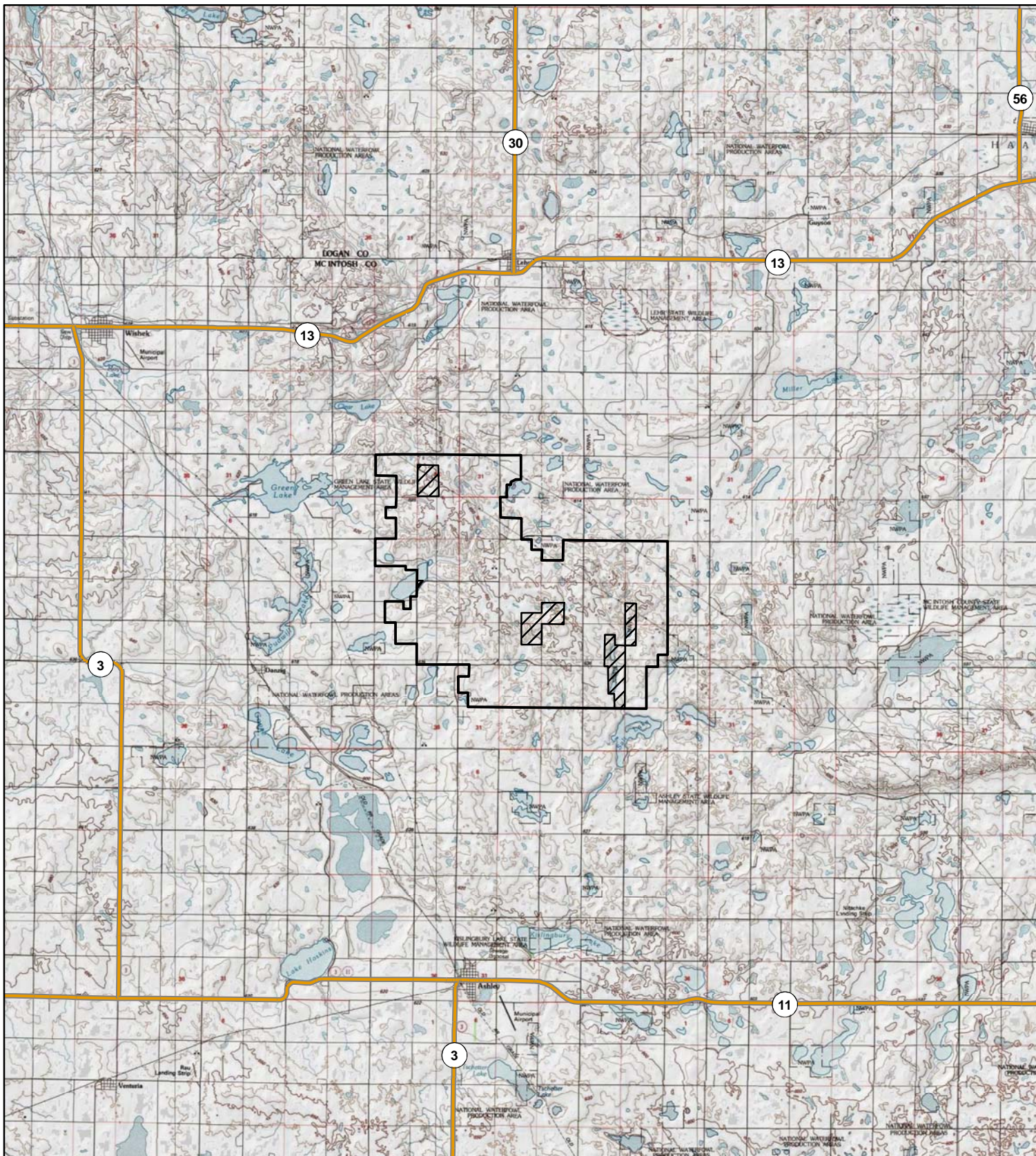

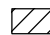
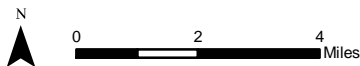


Figure 1
Project Vicinity

Ashley Wind Energy Project
McIntosh County, North Dakota



-  Project Area
-  Non-Leased Area



Source: USGS 24k Quad, 1985.