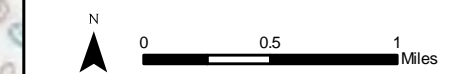
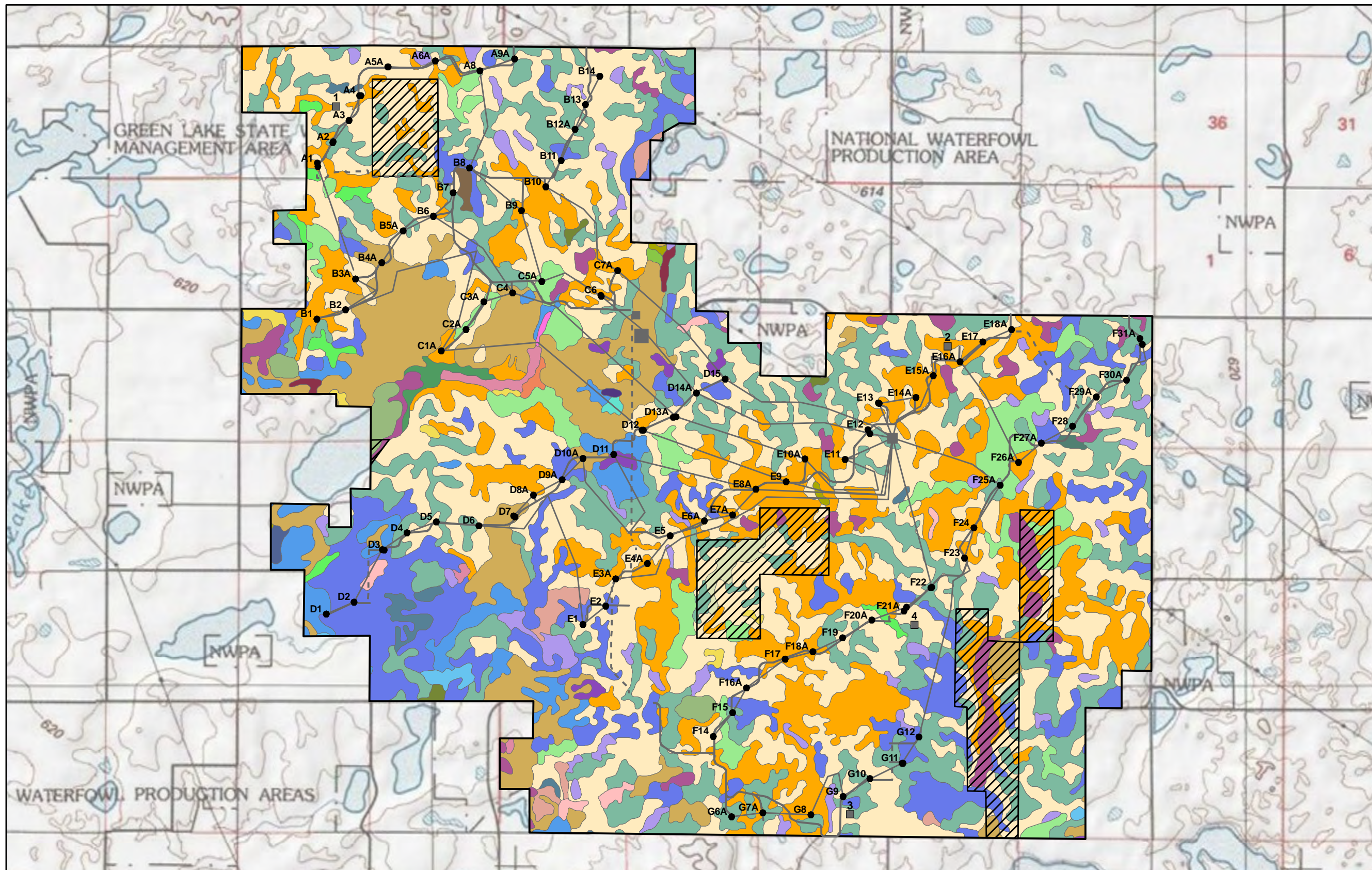


Figure 14
Soils

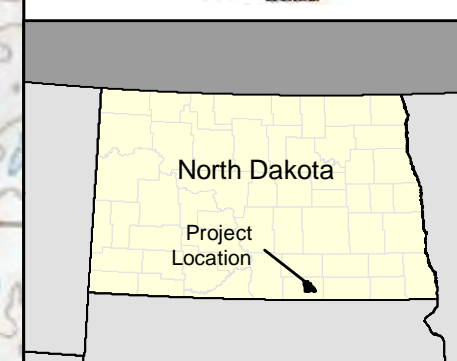
Ashley Wind Energy Project
McIntosh County, North Dakota



- Project Area
- Non-Leased Area
- Proposed Turbine
- Project Layout
- Proposed Laydown/O&M Building
- Proposed Temporary Batch Plant
- Proposed Substation



Source: Mortenson electrical layout 2-25-2010, Turbine layout 4-21-2010, Roads layout 5-6-2010, NRCS SSURGO database for McIntosh County, ND, 2008.



Soils				
Appam sandy loam, 0-6% slopes	Hamerly-Parnell complex, 0-3% slopes	Noonan-Williams loams, 0-6% slopes	Wabek-Appam sandy loams, 0-6% slopes	Williams-Zahl-Parnell complex, 0-15% slopes
Arnegard loam, 0-6% slopes	Harriet loam, 0-32% slopes	Parnell silty clay loam	Wabek-Appam sandy loams, 6-25% slopes	Zahl-Max loams, 15-60% slopes
Bearden silt loam, 0-2% slopes	Lehr-Bowdle loams, 2-6% slopes	Pits, gravel and sand	Wabek-Lehr complex, 2-6% slopes	Zahl-Williams loams, 6-9% slopes
Bowdle-Lehr loams, 0-2% slopes	Makoti silty clay loam, 0-3% slopes	Rusklyn silty clay loam, 2-6% slopes	Water	Zahl-Williams loams, 9-15% slopes
Colvin silt loam	Makoti-Rusklyn silty clay loams, 2-6% slopes	Schaller loamy sand, 6-15% slopes	Williams-Bowbells loams, 0-3% slopes	
Hamerly and Vallers loams, saline, 0-3% slopes	Marysland loam	Southam silty clay loam	Williams-Bowbells loams, 3-6% slopes	
Hamerly loam, 0-3% slopes	Max-Zahl-Arnegard loams, 9-35% slopes, very stony	Stirum fine sandy loam, 0-1% slopes	Williams-Zahl loams, 3-6% slopes	