



**Luverne Wind Farm  
Transmission Line Construction  
Plan of the Week (POW)**

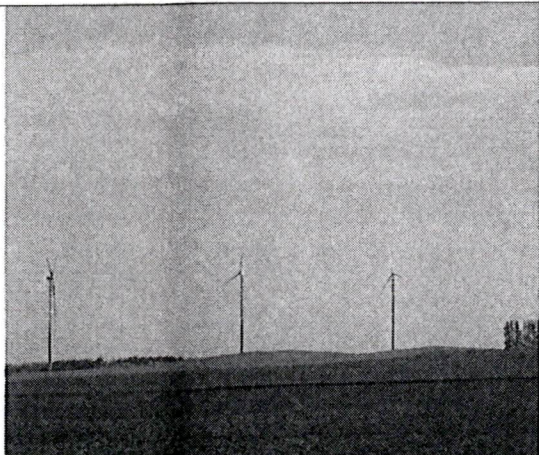
Week of June 15th-19th, 2009

**Otter Tail Power Company**

**Activities:**

- **Safety/Environmental:**  
None.
- **Lay down Yard:**  
None.
- **Electrical/Construction:**  
None.
- **Potential Schedule Delays:**  
None.
- **Plan for the week:**  
None.

**General Information and Announcements**



**Work In Progress**

	Total	Complete	Remaining	% Complete
Poles Framed	87	70	17	80%
Poles Set	87	56	31	64%
Conductor Strung	12	0	12	0%
Conductor Sagged	12	0	12	0%
Conductor Clipped	12	0	12	0%
Fiber Strung	12	0	12	0%
Fiber Sagged	12	0	12	0%
Fiber Clipped	12	0	12	0%