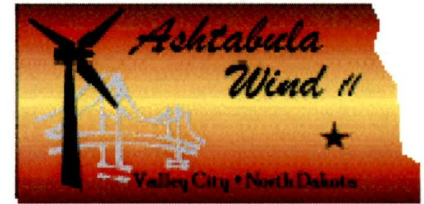




# NEXtera™ Energy Resources Ashtabula Wind II



## Otter Tail

### Plan of the Day (POD)

**Date: Thursday, 8/6/2009**  
**High: 74**  
**Precipitation Chances: 10%**

**COD: 10-15-09**  
**Low: 55**

**Days to COD: 71**  
**Winds: ESE @ 2 mph**  
**Weather Forecast: Partly Sunny**

**NEXtera™ Energy Resources**

**Otter Tail**

**Blattner Energy**

**GE**

#### Safety/Environmental:

- Drive cautiously, keep headlights must be on
- Keep your speed to a minimum
- SWPPP inspection every two weeks
- Crane walk paths

#### Civil/Erection:

- Offload tower sections, nacelles & blades

#### Erection:

- Erect top nacelle & rotor at 140 & 142

#### Collections:

- Fiber termination at 130, 140-143
- High voltage cable termination at 144-146
- Low voltage cable termination at 136-139

#### Electrical:

- PMT installation at 154-157
- Controller termination at 163-164
- Tower wiring at 141
- Mechanical completion pre walk at 141
- Mechanical completion walk down at 135

#### RECEIVING (As of COB yesterday)

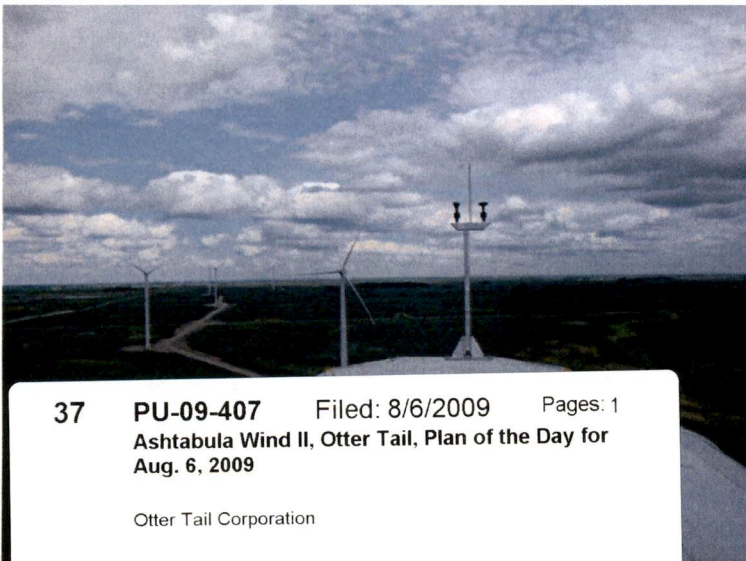
	Total	Received	Balance
PMT XFR	33	0	33
Grounding XFR	3	0	3
4/0 Cable	189,000	195,397	-6,397
500 KCM	117,000	120,206	-3,206
1000-2kv (Low Voltage)	12,750	12,700	50
12 Fiber SM FOC	105,000	104,394	606
XFR Box Pads	33	33	0
Controllers	33	24	9
Bases	33	20	13
Mids	33	20	13
Tops	33	20	13
Nacelles	33	23	10
Hubs	33	25	8
Blade Sets	33	21	12

Negative Number Indicates Overage of Cable

#### General Construction Status

	Complete	Total	% Complete
Roads Subgraded	41,232	41,232	100.0%
Gravel Road (6")	41,232	41,232	100.0%
Roads Complete	41,232	41,232	100.0%
Silt Fence Installed	10,000	7,300	137.0%
Foundations Excavated	33	33	100.0%
Foundations Poured	33	33	100.0%
Foundations Backfilled	33	33	100.0%
Crane Pads Completed	33	33	100.0%
Tower Base Sections Erected	15	33	45.5%
Tower Mid Sections Erected	15	33	45.5%
Tower Top Sections Erected	9	33	27.3%
Nacelles Installed	9	33	27.3%
Rotors Installed	9	33	27.3%
Tower Wiring Complete	2	33	6.1%
Mechanically Complete	1	33	3.0%
Final Commissioned	0	33	0.0%
4/0 Cable Trenched	177,605	189,000	94.0%
500 Cable Trenched	100,122	117,000	85.6%
1000 Low Voltage Trenched	0	18,000	0.0%
Fiber Optic 12 Fiber SM	0	105,000	0.0%
Transformers Set	25	33	75.8%

(as of COB yesterday)



37 PU-09-407 Filed: 8/6/2009 Pages: 1  
 Ashtabula Wind II, Otter Tail, Plan of the Day for  
 Aug. 6, 2009

Otter Tail Corporation