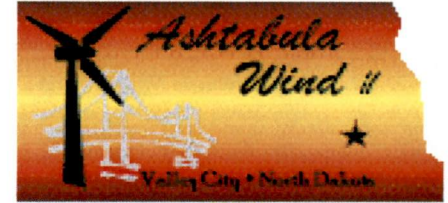




NEXtera™ Energy Resources Ashtabula Wind II

NEXtera Energy

Plan of the Day (POD)



Date: Tuesday, 9/1/2009
High: 78
Precipitation Chances: 0%

COD: 10-31-09
Low: 51

Days to COD: 61
Winds: S @ 8 mph
Weather Forecast: Sunny

NEXtera™ Energy Resources Otter Tail Blattner Energy GE

Safety/Environmental:

- Keep your speed to a minimum
- SWPPP inspection every two weeks

Civil/Erection:

- Gravel at 216-220 & 235-237
- Foundations:
- Form pedestal at 216-218
- Pour pedestal at 216-220
- Backfill at 224-227
- Build crane pad at 205-207

Erection:

- Erect base & mid at 174-175 & 231-232
- Assemble rotor at 174-175 & 231-232
- Erect top & nacelle & rotor at 208 & 234

Collection:

- Trench & cable install-4/0 at 208-212
- Trench & cable install -1000 at 2S, 3S Home runs
- Fiber termination at hand holes
- High voltage cable termination at 173-176
- Low voltage cable termination at 169-171

Electrical:

- Pedestal conduit at 216, 235-237
- Grounding grid at 219-222
- Controller termination at 187, 204 & 205
- Box pad installation at 204-205
- PMT installation at 188-190 & 201
- Tower wiring at 212
- Tower IIP at 192

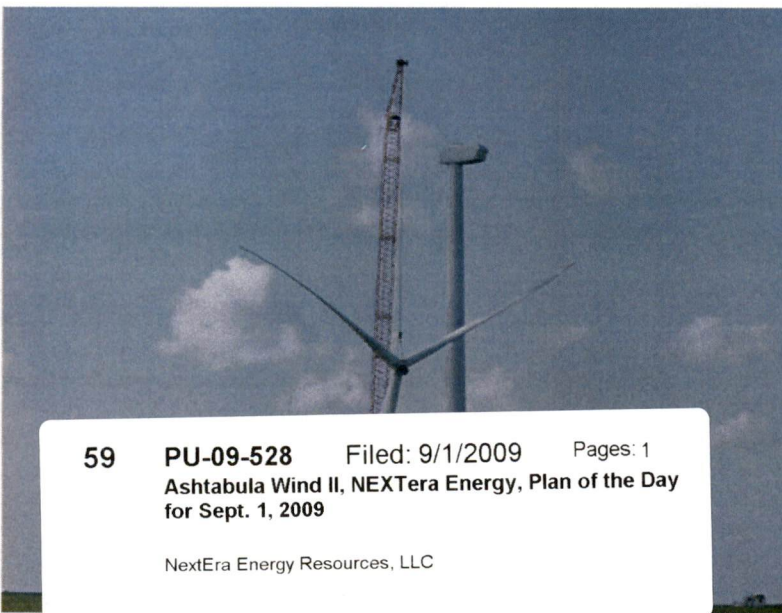
RECEIVING (As of COB yesterday)			
	Total	Received	Balance
PMT XFR	81	81	0
Grounding XFR	5	5	0
4/0 Cable	441,000	453,555	-12,555
500 KCM	36,000	37,036	-1,036
Copperclad	84,000	84,579	-579
1000 KCM	333,000	337,803	-4,803
12 Fiber SM FOC	270,000	270,650	-650
1000-2km (Low Voltage)	30,500	31,330	-830
XFR Box Pads	81	81	0
Controllers	80	80	0
Bases	80	80	0
Mids	80	80	0
Tops	80	80	0
Nacelles	80	80	0
Hubs	80	80	0
Blade Sets	80	80	0

Negative Number Indicates Overage of Cable

General Construction Status

	Complete	Total	% Complete
Roads Subgraded	88,996	117,188	75.9%
Gravel Roads (6")	84,749	117,188	72.3%
Roads Complete	79,749	117,188	68.1%
Silt Fence Installed	21,630	17,700	122.2%
Foundations Excavated	80	80	100.0%
Foundations Poured	72	80	90.0%
Foundations Backfilled	65	80	81.3%
Crane Pads Completed	62	80	77.5%
Tower Base Sections Erected	33	80	41.3%
Tower Mid Sections Erected	33	80	41.3%
Tower Top Sections Erected	26	80	32.5%
Nacelles Installed	26	80	32.5%
Rotors Installed	26	80	32.5%
Tower Wiring Complete	22	80	27.5%
Mechanically Complete	14	80	17.5%
Pre-Commissioned	0	80	0.0%
Final Commissioned	0	80	0.0%
4/0 Cable Trenched	195,802	441,000	44.4%
500 Cable Trenched	19,934	36,000	55.4%
1000 Cable Trenched	258,648	333,000	77.7%
Copperclad	0	84,000	0.0%
1000 Low Voltage installed	7875	30,500	25.8%
Fiber Optic 12 Fiber SM	71,475	270,000	26.5%
Transformers Set/Terminated	47	80	58.8%

(as of COB yesterday)



59 PU-09-528 Filed: 9/1/2009 Pages: 1
 Ashtabula Wind II, NEXtera Energy, Plan of the Day
 for Sept. 1, 2009

NextEra Energy Resources, LLC