



minnesota power / 30 west superior street / duluth, minnesota 55802-2093 / 218-722-5642 / www.mnpower.com

April 16, 2010

**RECEIVED**

**APR 16 2010**

Jerry Lein  
North Dakota Public Service Commission  
State Capitol  
12th Floor, Dept. 408  
600 E Boulevard Ave  
Bismarck, ND 58505-0480

**PUBLIC SERVICE COMMISSION**

Re: Request for Staff Approval of Minor Amendment: PU-09-587

Dear Mr. Lein,

As I indicated in our recent conversation, Minnesota Power is requesting administrative staff approval of several minor changes in structure location and height on its 230kV Bison I generator outlet. Except for one move, all the structure moves maintain the original alignment approved by order of the North Dakota Public Service Commission on March 10, 2010. Moreover, all structure heights remain within the range indicated on our original route permit application. These adjustments are needed to provide adequate separation distances from cultural resources and statutory section line easements. The attached map series and table detail each move and height adjustment.

Thank you for your time in considering this request. Please contact me at 218.343.9119 or [jbatkinson@allete.com](mailto:jbatkinson@allete.com) with any questions.

Best regards,

James B. Atkinson  
Sr. Environmental Compliance Spec.

35 PU-09-587 Filed: 4/16/2010 Pages: 13  
Request for Staff Approval of minor amendment to  
structure location and height

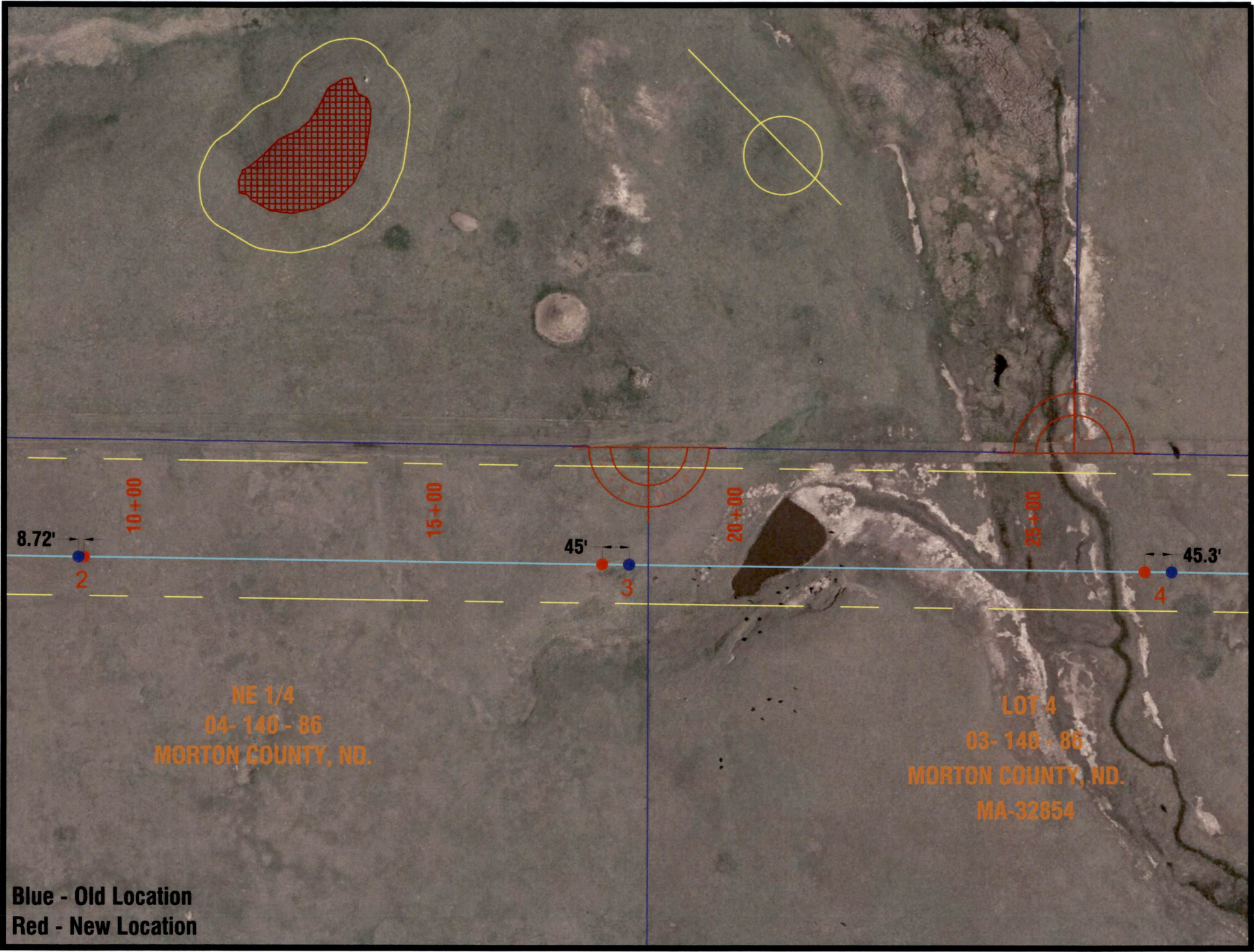


Minnesota Power & Light

James Atkinson, Enir. Compliance Spec.

Plan and Profile Changes  
MD+32900 dated 12-11-09 to MD+32900 dated 03-24-10

<b>Str.</b>	<b>Change</b>	<b>Reason</b>
1	ht. changed to 85 ft from 80 ft	To accommodate Str. 2 move
2	moved 8.72'	Re-span to accommodate str. 3 move.
3	moved 45'	To meet required distance from section line per Morton County.
4	moved 45.3' and ht. changed to 115 ft from 105 ft	Re-span to accommodate str. 3 move.
7	ht changed to 95 ft from 90 ft.	To minimize swing angle on the conductors and reduce uplift.
9	moved 209.61' and ht. changed to 120 ft from 105 ft	Change of alignment to meet required distance from section line per Oliver County.
10	moved 384.47' and ht. changed to 120 ft from 95 ft	Change of alignment to meet required distance from section line per Oliver County.
11	removed from line	Change of alignment to meet required distance from section line per Oliver County.
12	moved 12.36', ht. changed to 110 ft from 95 ft. and station equation was added	Change of alignment to meet required distance from section line per Oliver County.
13	ht. changed to 115 ft from 110 ft	To accommodate Str. 12 move
19	ht. changed to 115 ft from 105 ft	To accommodate Str. 20 move
20	moved 42.89' and ht. changed to 105 ft from 90 ft	To meet required distance from cultural site.
22	moved 92.07'	To meet required distance from section line per Oliver County.
23	moved 17.77' and ht. changed to 110 ft from 105 ft	Re-span to accommodate str. 22 move.
29	moved 47.70'	To meet required distance from cultural site.
30	moved 50.64'	Re-span to accommodate str. 29 move.
61	moved 70.9'	To meet required distance from cultural site.
63	moved 59.61'	To meet required distance from cultural site.
73	moved 48.16'	To meet required distance from section line per Oliver County.
100	moved 16.33'	Re-span to accommodate Str. 101 move.
101	moved 18.23'	To meet clearance to BNI haul road
103	ht. changed to 120 ft from 115 ft	To meet the clearance to existing 115 kV line underneath
111	moved 23.48'	To meet clearance to BNI haul road
120	moved 54.32'	To meet clearance to BNI haul road and minimize swing angle on the conductors.
124	ht. changed to 125 ft from 120 ft	To accommodate Str. 125 move
125	moved 58.63'	To meet required distance from cultural site.
126	ht. changed to 120 ft from 110 ft	To accommodate Str. 125 move



NE 1/4  
04- 140 - 86  
MORTON COUNTY, ND.

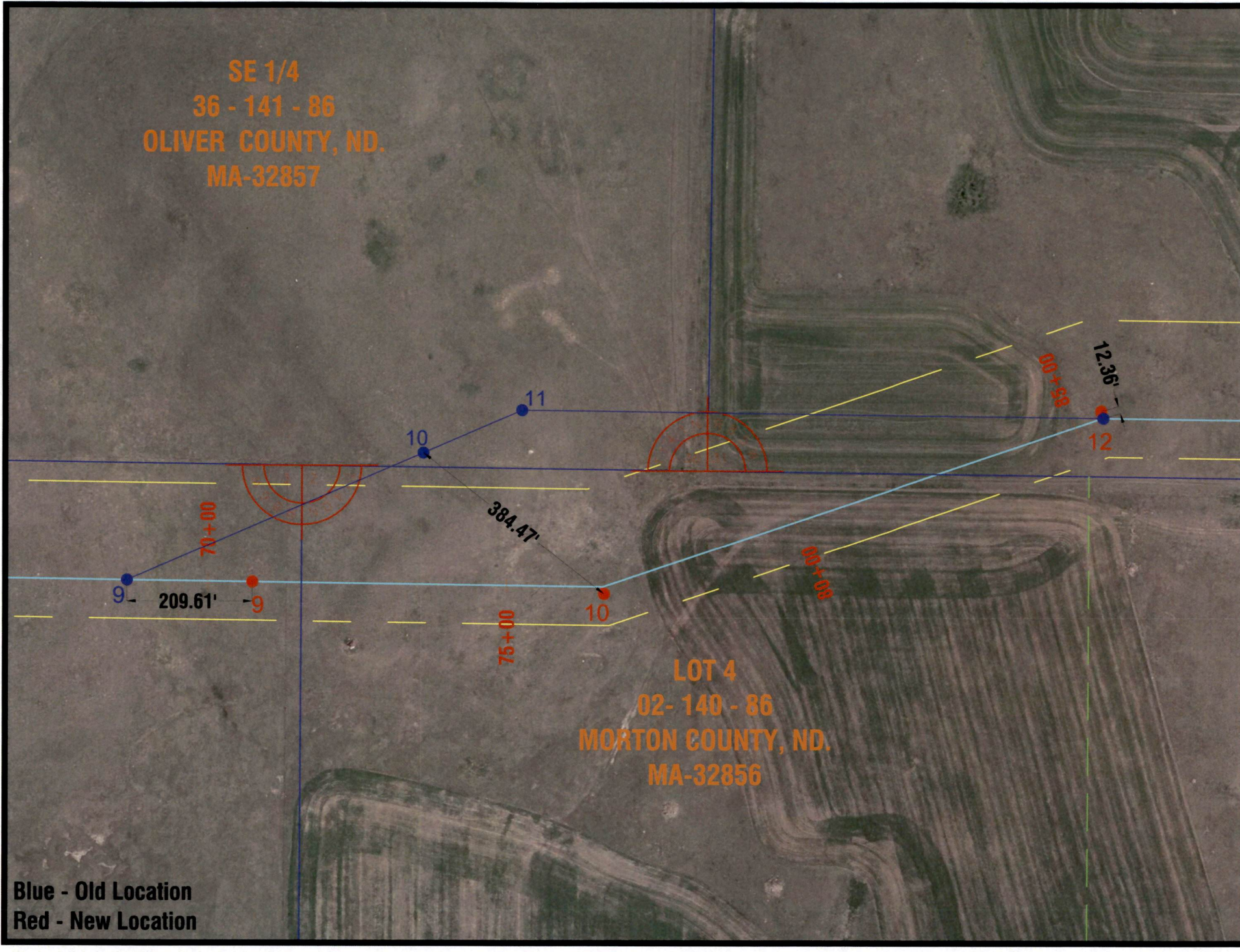
LOT 4  
03- 140 - 86  
MORTON COUNTY, ND.  
MA-32854

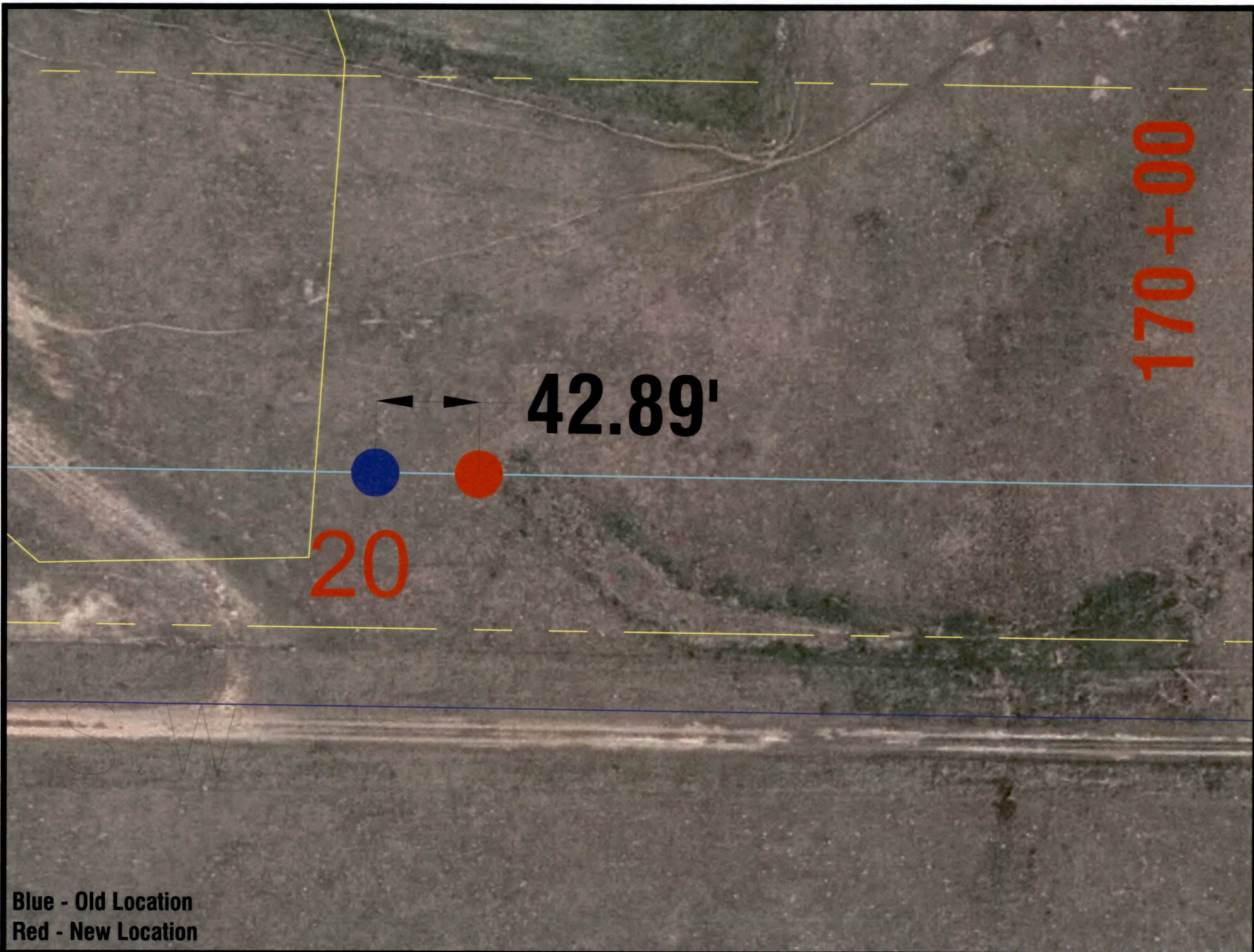
Blue - Old Location  
Red - New Location

SE 1/4  
36 - 141 - 86  
OLIVER COUNTY, ND.  
MA-32857

LOT 4  
02- 140 - 86  
MORTON COUNTY, ND.  
MA-32856

Blue - Old Location  
Red - New Location





170+00

42.89'

20

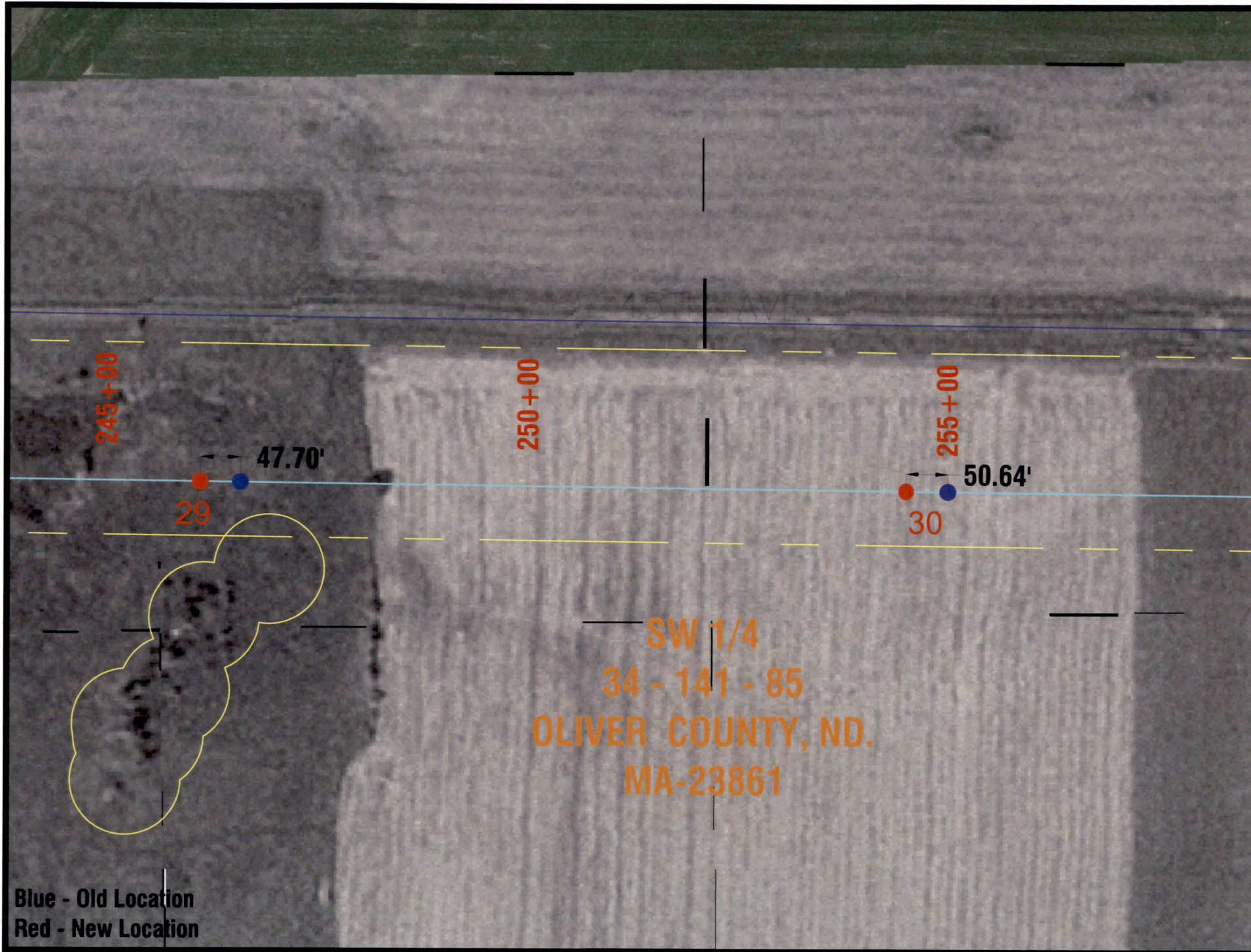
S.W.

Blue - Old Location  
Red - New Location

SW 1/4  
33 - 141 - 85  
OLIVER COUNTY, ND.  
MA-32860



Blue - Old Location  
Red - New Location

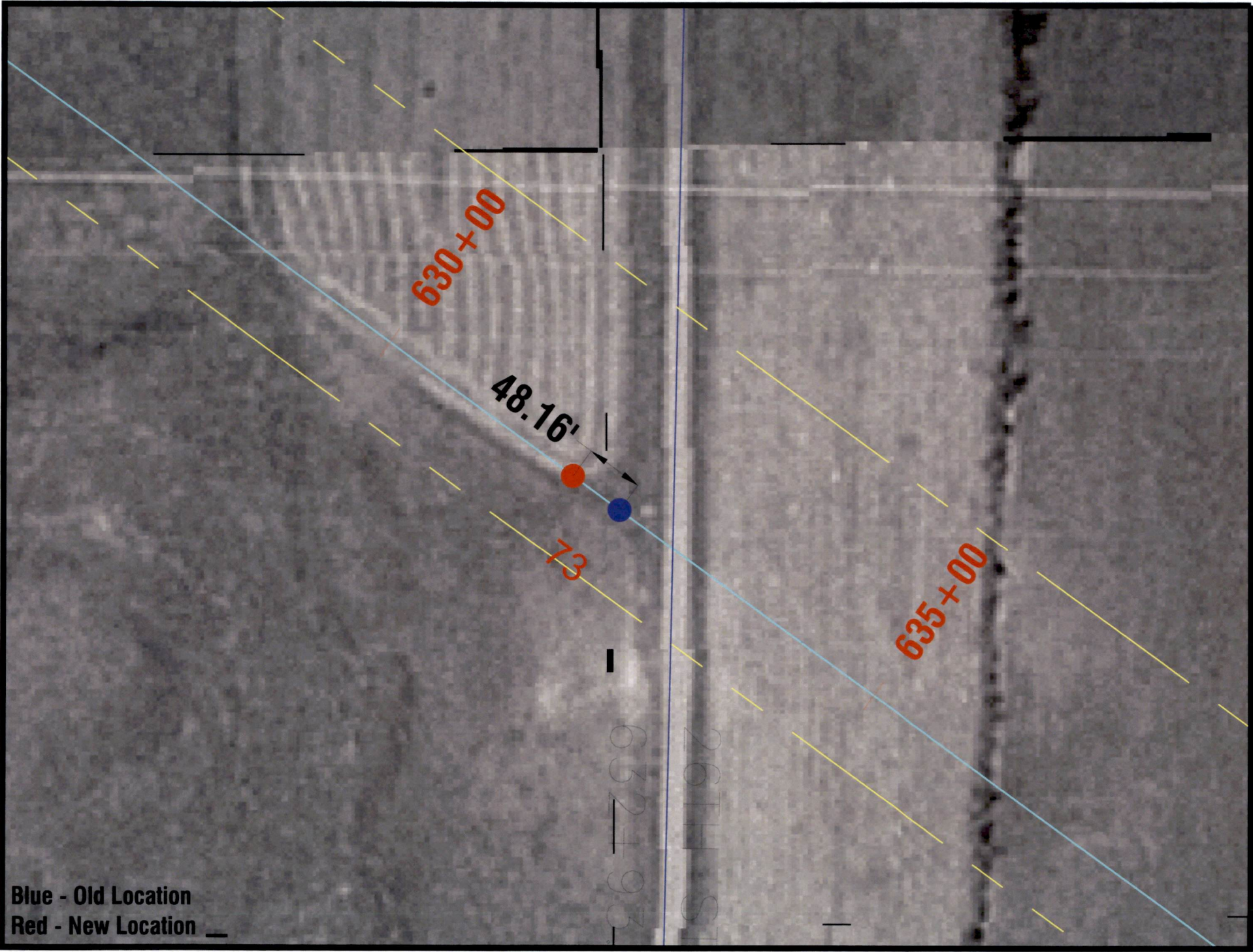


84  
RY, ND.  
0

19 - 141 - 84  
OLIVER COUNTY, ND.  
MA-32870



Blue - Old Location  
Red - New Location



Blue - Old Location  
Red - New Location

SE 1/4  
34 - 142 - 84  
OLIVER COUNTY, ND.  
MA-32879

100  
870+00  
16.33'

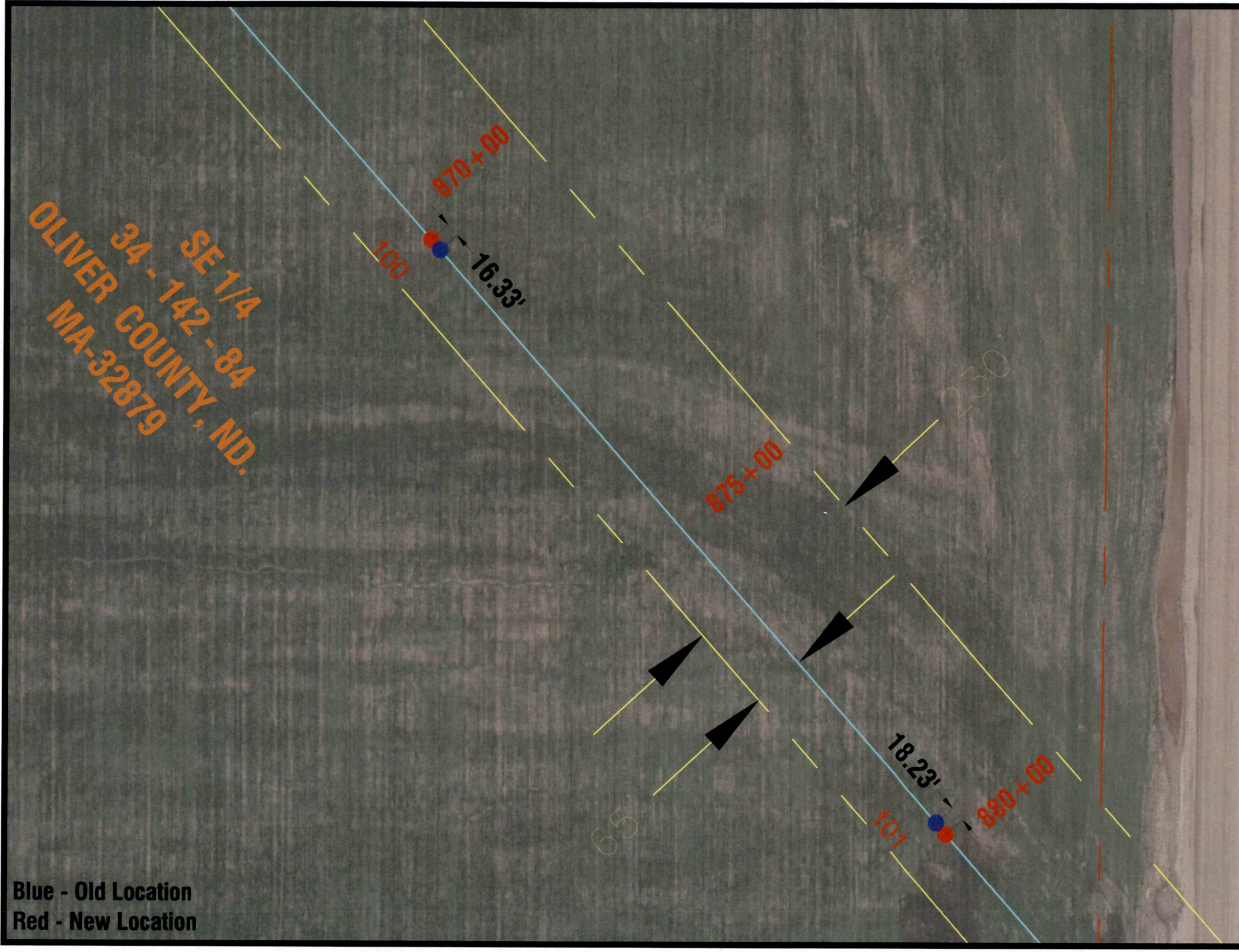
875+00

18.23'  
101  
880+00

230'

65'

Blue - Old Location  
Red - New Location





960+00

965+00

23.48'

111

NW 1/4

36 - 142 - 84

OLIVER COUNTY, ND.

MA-32881

Blue - Old Location  
Red - New Location

30 - 142 - 83  
OLIVER COUNTY, ND.  
MA-32884

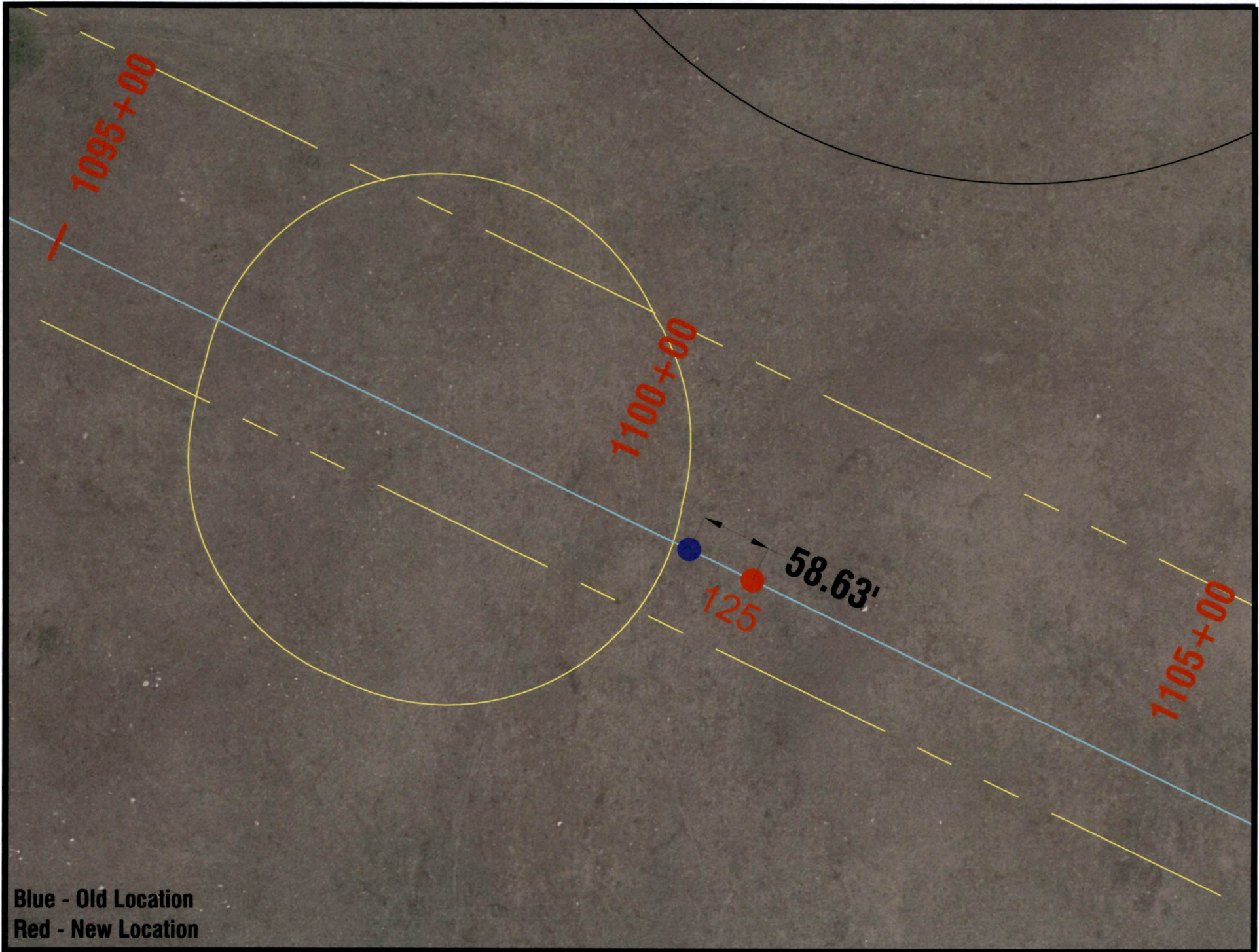
1045+00

1050+00

54.32'

120

Blue - Old Location  
Red - New Location



Blue - Old Location  
Red - New Location