

**Plan of the Day (POD)**

**Date:** Thursday, 8-12-10  
**High:** 85  
**Precipitation Chances:** 30%

**COD:** 11-30-10  
**Low:** 63  
**Weather Forecast:** Partly cloudy

**Days to COD:** 111  
**Winds:** E @ 14 mph

**NextEra™ Energy Resources**

**Blattner Energy**

**Paradigm**

**GE**

**Safety/Environmental:**

- Obey traffic guidelines & speed limits
- Be aware of heat effects
- Proper labeling of secondary containers
- SWPPP Inspection 8-16-10
- Fence off wetland near collection routes & string roads
- Installing silt fence

**Civil/Erection:**

- Subgrade string road 32-33 & 53-55
- Gravel string roads 57-59 & 60-64
- Approach at 32-33

**Foundations:**

**Collection:**

- Staking collection route at string roads
- Bore at F7-1 & F7-4

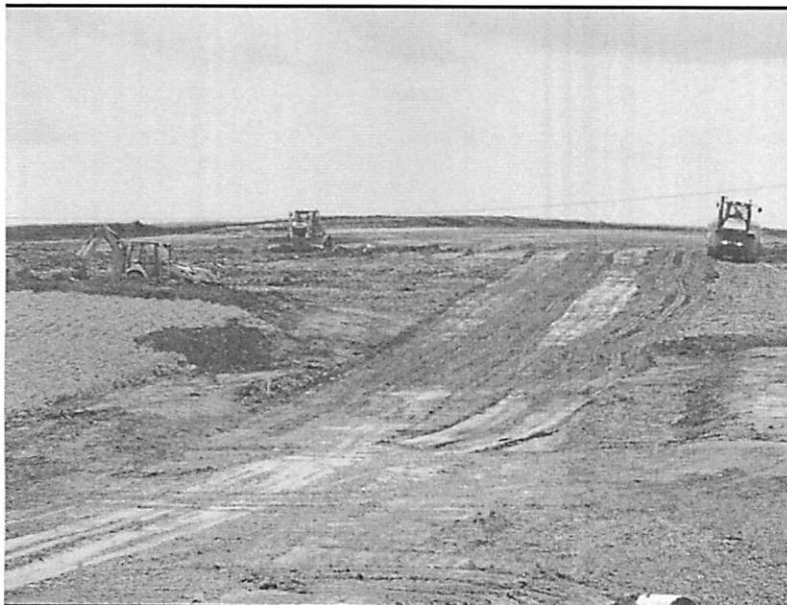
**Electrical:**

**Substation:**

- Low side piers & transformer pads

**Upcoming Events/Outstanding Issues:**

- GE Pre installation meeting 8-24-10



**RECEIVING (As of COB yesterday)**

	Total	Received	Balance
PMT XFR	65	65	0
Grounding XFR	6	0	6
4/0 Cable	519,519	200,907	318612
500 KCM	51,002	39,635	11367
Copperclad	65,280	73,906	-8626
1000 KCM	254,661	105,811	148850
1000 KCM LVC	24,000	40,730	-16730
12 Fiber SM FOC	289,504	336,530	-47026
XFR Box Pads	64	20	44
Controllers	64	64	0
Bases	64	64	0
Mids	64	64	0
Tops	64	64	0
Nacelles	64	64	0
Hubs	64	64	0
Blade Sets	64	64	0

**Negative Number Indicates Overage of Cable**

**General Construction Status**

	Complete	Total	% Complete
Roads Subgraded	14,900	99,651	15.0%
Roads Built	3,184	99,651	3.2%
Silt Fence Installed	1,559	11,417	13.7%
Foundations Excavated	0	64	0.0%
Foundations Poured and Backfilled	0	64	0.0%
Crane Pads Completed	0	64	0.0%
Tower Base Sections Erected	0	64	0.0%
Tower Mid Sections Erected	0	64	0.0%
Tower Top Sections Erected	0	64	0.0%
Nacelles Installed	0	64	0.0%
Rotors Installed	0	64	0.0%
Tower Wiring Complete	0	64	0.0%
Final Commissioned	0	64	0.0%
Underground Trenching Installed (ft)	0		0.0%
(as of COB yesterday)			