

Plan of the Day (POD)

PUBLIC SERVICE COMMISSION

Date: Wednesday, 8-25-10
High: 78
Precipitation Chances: 0%

COD: 11-30-10
Low: 48
Weather Forecast: Sunny

Days to COD: 98
Winds: S @ 7 mph

NextEra™ Energy Resources

Blattner Energy

Paradigm

GE

Safety/Environmental:

- Keep focused
- Maintain proper distance from equipment
- Fence off wetland as needed
- Installing silt fence
- SWPPP inspection 8-30-10

Civil/Erection:

- Subgrade string road 27-31
- Gravel string roads 37-41 & 47-48
- Approach at 30

Foundations:

- Foundation excavation at 36-37
- Pour mud mats 33 & 35
- Install bottom rebar mat at 54 & 56
- Install anchor bolts at 54 & 56
- Install top rebar mat at 54-56

- Form base at 54 & 56
- Pour base at 57-58
- Form pedestal at 59 & 64
- Pour pedestal at 59 & 64
- Backfill at 46

Collection:

- Trench and install 1000 at SP1105 - SP1106
- Bore at F10-12 & F11-14

Substation:

- Setting static mast
- Install control conduit
- Standing low side steel

Upcoming Events/Outstanding Issues:

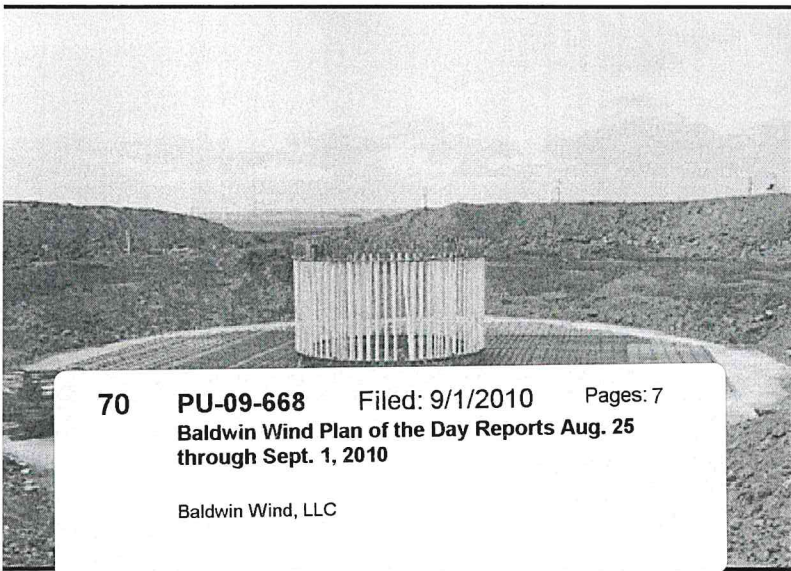
RECEIVING (As of COB yesterday)			
	Total	Received	Balance
PMT XFR	65	65	0
Grounding XFR	6	0	6
4/0 Cable	519,519	208,257	311,262
500 KCM	51,002	45,835	5,167
Copperclad	65,280	73,906	-8,626
1000 KCM	254,661	167,415	87,246
1000 KCM LVC	24,000	40,730	-16,730
12 Fiber SM FOC	289,504	336,530	-47,026
XFR Box Pads	64	42	22
Controllers	64	64	0
Bases	64	64	0
Mids	64	64	0
Tops	64	64	0
Nacelles	64	64	0
Hubs	64	64	0
Blade Sets	64	64	0

Negative Number Indicates Overage of Cable

General Construction Status

	Complete	Total	% Complete
Roads Subgraded	37,243	99,651	37.4%
Roads Built	27,905	99,651	28.0%
Silt Fence Installed	2,274	11,417	19.9%
Foundations Excavated	18	64	28.1%
Foundations Poured	6	64	9.4%
Foundations Backfilled	0	64	0.0%
Crane Pads Completed	0	64	0.0%
Tower Base Sections Erected	0	64	0.0%
Tower Mid Sections Erected	0	64	0.0%
Tower Top Sections Erected	0	64	0.0%
Nacelles Installed	0	64	0.0%
Rotors Installed	0	64	0.0%
Tower Wiring Complete	0	64	0.0%
Final Commissioned	0	64	0.0%
4/0 Cable Trenched	0	157,430	0.0%
500 Cable Trenched	0	15,455	0.0%
1000 Cable Trenched	27,042	77,170	35.0%

(as of COB yesterday)



70 PU-09-668 Filed: 9/1/2010 Pages: 7
Baldwin Wind Plan of the Day Reports Aug. 25 through Sept. 1, 2010

Baldwin Wind, LLC

Plan of the Day (POD)

PUBLIC SERVICE COMMISSION

Date: Thursday, 8-26-10
High: 89
Precipitation Chances: 0%

COD: 11-30-10
Low: 56
Weather Forecast: Sunny

Days to COD: 97
Winds: S @ 14 mph

NextEra™ Energy Resources

Blattner Energy

Paradigm

GE

Safety/Environmental:

- Keep focused
- Maintain proper distance from equipment
- Fence off wetland as needed
- Installing silt fence
- SWPPP inspection 8-30-10

Civil/Erection:

- Subgrade string road 16 & 27-29
- Gravel string roads 49-50 & 56
- Approach at 27

Foundations:

- Foundation excavation at 38-40
- Pour mud mats 38-39
- Install bottom rebar mat at 53 & 56
- Install anchor bolts at 53 & 56
- Install top rebar mat at 53 & 56
- Form base at 53 & 55-56
- Pour base at 54-55
- Form pedestal at 57-58
- Pour pedestal at 57-58
- Backfill at 45

Collection:

- Trench and install 1000 at SP1006-JB10-1 & SP1106-JB 11-1
- Bore at F10-13 & SP702

Substation:

- Install control conduit
- Standing low side steel

Upcoming Events/Outstanding Issues:

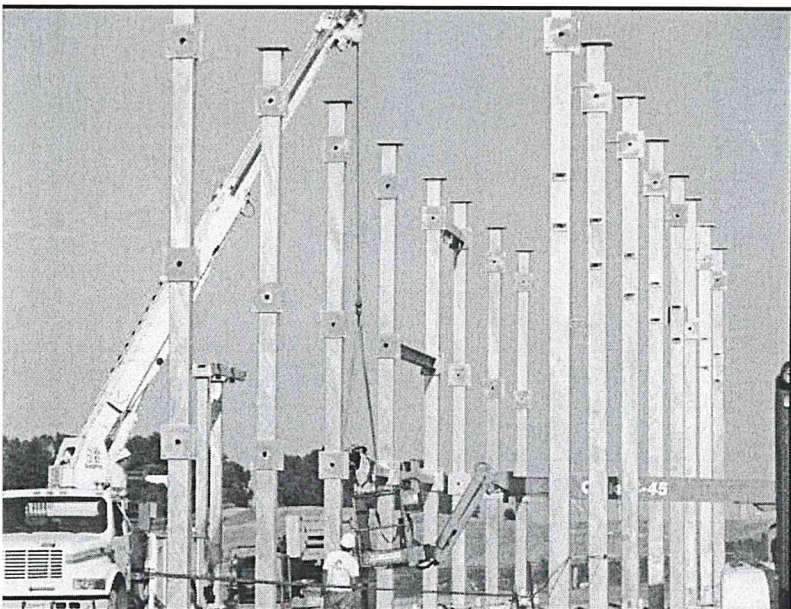
RECEIVING (As of COB yesterday)			
	Total	Received	Balance
PMT XFR	65	65	0
Grounding XFR	6	0	6
4/0 Cable	519,519	208,257	311,262
500 KCM	51,002	45,835	5,167
Copperclad	65,280	73,906	-8,626
1000 KCM	254,661	167,415	87,246
1000 KCM LVC	24,000	40,730	-16,730
12 Fiber SM FOC	289,504	336,530	-47,026
XFR Box Pads	64	42	22
Controllers	64	64	0
Bases	64	64	0
Mids	64	64	0
Tops	64	64	0
Nacelles	64	64	0
Hubs	64	64	0
Blade Sets	64	64	0

Negative Number Indicates Overage of Cable

General Construction Status

	Complete	Total	% Complete
Roads Subgraded	39,483	99,651	39.6%
Roads Built	30,056	99,651	30.2%
Silt Fence Installed	2,274	11,417	19.9%
Foundations Excavated	20	64	31.3%
Foundations Poured	8	64	12.5%
Foundations Backfilled	1	64	1.6%
Crane Pads Completed	0	64	0.0%
Tower Base Sections Erected	0	64	0.0%
Tower Mid Sections Erected	0	64	0.0%
Tower Top Sections Erected	0	64	0.0%
Nacelles Installed	0	64	0.0%
Rotors Installed	0	64	0.0%
Tower Wiring Complete	0	64	0.0%
Final Commissioned	0	64	0.0%
4/0 Cable Trenched	0	157,430	0.0%
500 Cable Trenched	0	15,455	0.0%
1000 Cable Trenched	32,156	77,170	41.7%

(as of COB yesterday)



Plan of the Day (POD)

Date: Friday, 8-27-10
High: 90
Precipitation Chances: 5%

COD: 11-30-10
Low: 51
Weather Forecast: Sunny

Days to COD: 96
Winds: W @ 14 mph

NextEra™ Energy Resources	Blattner Energy	Paradigm	GE
---------------------------	-----------------	----------	----

- Safety/Environmental:**
- Keep focused
 - Maintain proper distance from equipment
 - Fence off wetland as needed
 - Installing silt fence
 - SWPPP inspection 8-30-10
- Civil/Erection:**
- Subgrade string road 16-19 & 27-28
 - Gravel string roads 30-31 & 49-50
 - Approach at 17
- Foundations:**
- Foundation excavation at 42-44
 - Pour mud mats 41-43
 - Install bottom rebar mat at 34-35
 - Install anchor bolts at 33-35
 - Install top rebar mat at 33-34
 - Form base at 33-34 & 56
 - Pour base at 53 & 56
 - Form pedestal at 54-55
 - Pour pedestal at 54-55
 - Backfill at 60-61
 - Build crane pad at 60-61
- Collection:**
- Trench and install 1000 at JB 10-1- Sp 1008
 - Bore at F10-14 & F8-1
 - Underground splicing at SP701 & SP702
 - Setting transformer box pad at 45
- Substation:**
- Install control conduit
 - Standing low side steel

RECEIVING (As of COB yesterday)			
	Total	Received	Balance
PMT XFR	65	65	0
Grounding XFR	6	0	6
4/0 Cable	519,519	208,257	311,262
500 KCM	51,002	45,835	5,167
Copperclad	65,280	91,994	-26,714
1000 KCM	254,661	192,159	62,502
1000 KCM LVC	24,000	40,730	-16,730
12 Fiber SM FOC	289,504	336,530	-47,026
XFR Box Pads	64	42	22
Controllers	64	64	0
Bases	64	64	0
Mids	64	64	0
Tops	64	64	0
Nacelles	64	64	0
Hubs	64	64	0
Blade Sets	64	64	0

Negative Number Indicates Overage of Cable

General Construction Status			
	Complete	Total	% Complete
Roads Subgraded	42,194	99,651	42.3%
Roads Built	32,672	99,651	32.8%
Silt Fence Installed	2,274	11,417	19.9%
Foundations Excavated	22	64	34.4%
Foundations Poured	10	64	15.6%
Foundations Backfilled	2	64	3.1%
Crane Pads Completed	0	64	0.0%
Tower Base Sections Erected	0	64	0.0%
Tower Mid Sections Erected	0	64	0.0%
Tower Top Sections Erected	0	64	0.0%
Nacelles Installed	0	64	0.0%
Rotors Installed	0	64	0.0%
Tower Wiring Complete	0	64	0.0%
Final Commissioned	0	64	0.0%
4/0 Cable Trenched	0	157,430	0.0%
500 Cable Trenched	0	15,455	0.0%
1000 Cable Trenched	37,318	77,170	48.4%
(as of COB yesterday)			



Plan of the Day (POD)

Date: Saturday, 8-28-10
 High: 80
 Precipitation Chances: 20%

COD: 11-30-10
 Low: 55
 Weather Forecast: Partly Sunny

Days to COD: 95
 Winds: ESE @ 15 mph

NextEra™ Energy Resources	Blattner Energy	Paradigm	GE
---------------------------	-----------------	----------	----

- Safety/Environmental:**
- Keep focused
 - Proper securing of materials & equipment
 - Fence off wetland as needed
 - Installing silt fence
 - SWPPP inspection 8-30-10
- Civil/Erection:**
- Subgrade string road 16-19
 - Gravel string roads 29 & 58-59
 - Approach at 17
- Foundations:**
- Foundation excavation at 47-48
 - Pour mud mats 44, 47-48
 - Install bottom rebar mat at 32 & 36
 - Install anchor bolts at 32 & 36
 - Install top rebar mat at 35-36
 - Form base at 34-36
 - Pour base at 33-34
 - Form pedestal at 53 & 56
 - Pour pedestal at 54-55
 - Backfill at 62
 - Build crane pad at 62
- Collection:**
- Trench and install 1000 at JB 10-1- Sp 1008
 - Bore at F8-1 & F8-2
 - Underground splicing at SP701 & SP703
 - Setting transformer box pad at 60 & 62
- Substation:**
- Install control conduit
 - Standing low side steel

RECEIVING (As of COB yesterday)			
	Total	Received	Balance
PMT XFR	65	65	0
Grounding XFR	6	0	6
4/0 Cable	519,519	208,257	311262
500 KCM	51,002	45,835	5167
Copperclad	65,280	91,994	-26714
1000 KCM	254,661	192,159	62502
1000 KCM LVC	24,000	40,730	-16730
12 Fiber SM FOC	289,504	336,530	-47026
XFR Box Pads	64	42	22
Controllers	64	64	0
Bases	64	64	0
Mids	64	64	0
Tops	64	64	0
Nacelles	64	64	0
Hubs	64	64	0
Blade Sets	64	64	0

Negative Number Indicates Overage of Cable

General Construction Status

	Complete	Total	% Complete
Roads Subgraded	44,606	99,651	44.8%
Roads Built	35,172	99,651	35.3%
Silt Fence Installed	2,274	11,417	19.9%
Foundations Excavated	27	64	42.2%
Foundations Poured	10	64	15.6%
Foundations Backfilled	4	64	6.3%
Crane Pads Completed	4	64	6.3%
Tower Base Sections Erected	0	64	0.0%
Tower Mid Sections Erected	0	64	0.0%
Tower Top Sections Erected	0	64	0.0%
Nacelles Installed	0	64	0.0%
Rotors Installed	0	64	0.0%
Tower Wiring Complete	0	64	0.0%
Final Commissioned	0	64	0.0%
4/0 Cable Trenched	0	157,430	0.0%
500 Cable Trenched	0	15,455	0.0%
1000 Cable Trenched	42,822	77,170	55.5%

(as of COB yesterday)



Baldwin Wind, LLC

Plan of the Day (POD)

Date: Monday, 8-30-10
High: 75
Precipitation Chances: 75%

COD: 11-30-10
Low: 52

Days to COD: 93
Winds: N @ 13mph
Weather Forecast: Rain

NextEra™ Energy Resources	Blattner Energy	Paradigm	GE
---------------------------	-----------------	----------	----

Safety/Environmental:

- Keep focused
- Be aware of wet conditions
- Fence off wetland as needed
- Installing silt fence
- SWPPP inspection 8-30-10

Civil/Erection:

- Subgrade string road 17-19
- Gravel string roads 27-29
- Approach at 17

Foundations:

- Foundation excavation at 49-50
- Pour mud mats 49-50
- Install bottom rebar mat at 37-38
- Install anchor bolts at 32 & 37-38
- Install top rebar mat at 32 & 36-37
- Form base at 32 & 36-37
- Pour base at 35-36
- Form pedestal at 33-34
- Pour pedestal at 53 & 56
- Backfill at 63-64
- Build crane pad at 63-64

Collection:

- Trench and install 1000 at SP 1007 SP 1008
- Bore at F6-2 & F6-3
- Underground splicing at SP701 & SP703
- Setting transformer box pad at 62-63
- Low voltage wire at 46

Substation:

- Install control conduit
- Standing low side steel



RECEIVING (As of COB yesterday)			
	Total	Received	Balance
PMT XFR	65	65	0
Grounding XFR	6	0	6
4/0 Cable	519,519	208,257	311262
500 KCM	51,002	45,835	5167
Copperclad	65,280	91,994	-26714
1000 KCM	254,661	192,159	62502
1000 KCM LVC	24,000	40,730	-16730
12 Fiber SM FOC	289,504	336,530	-47026
XFR Box Pads	64	42	22
Controllers	64	64	0
Bases	64	64	0
Mids	64	64	0
Tops	64	64	0
Nacelles	64	64	0
Hubs	64	64	0
Blade Sets	64	64	0

Negative Number Indicates Overage of Cable

General Construction Status			
-----------------------------	--	--	--

	Complete	Total	% Complete
Roads Subgraded	45,758	99,651	45.9%
Roads Built	37,113	99,651	37.2%
Silt Fence Installed	2,274	11,417	19.9%
Foundations Excavated	29	64	45.3%
Foundations Poured	12	64	18.8%
Foundations Backfilled	5	64	7.8%
Crane Pads Completed	5	64	7.8%
Tower Base Sections Erected	0	64	0.0%
Tower Mid Sections Erected	0	64	0.0%
Tower Top Sections Erected	0	64	0.0%
Nacelles Installed	0	64	0.0%
Rotors Installed	0	64	0.0%
Tower Wiring Complete	0	64	0.0%
Final Commissioned	0	64	0.0%
4/0 Cable Trenched	0	157,430	0.0%
500 Cable Trenched	0	15,455	0.0%
1000 Cable Trenched	46,696	77,170	60.5%

(as of COB yesterday)

Plan of the Day (POD)

Date: Tuesday, 8-31-10
 High: 73
 Precipitation Chances: 15%

COD: 11-30-10
 Low: 47

Days to COD: 92
 Winds: WNW @ 16mph
 Weather Forecast: Partly Sunny

NextEra™ Energy Resources	Blattner Energy	Paradigm	GE
---------------------------	-----------------	----------	----

Safety/Environmental:

- Keep focused
- Be aware of wet conditions
- Fence off wetland as needed
- Installing silt fence
- SWPPP inspection today

Civil/Erection:

- Subgrade string road 17-25
- Gravel string roads 29
- Approach at 17

Foundations:

- Foundation excavation at 49 & 51-52
- Pour mud mats 49, 51-52
- Install bottom rebar mat at 40-41
- Install anchor bolts at 38-39
- Install top rebar mat at 37-38
- Form base at 37-38
- Pour base at 32 & 36
- Form pedestal at 35
- Pour pedestal at 53 & 56
- Backfill at 64
- Build crane at 64

Collection:

- Trench and install 1000 at SP 1109 SP 1110
- Underground splicing at SP703
- Setting transformer box pad at 59 & 64
- Low voltage wire at 60

Substation:

- Install control conduit
- Standing low side steel

RECEIVING (As of COB yesterday)			
	Total	Received	Balance
PMT XFR	65	65	0
Grounding XFR	6	0	6
4/0 Cable	519,519	208,257	311262
500 KCM	51,002	45,835	5167
Copperclad	65,280	91,994	-26714
1000 KCM	254,661	192,159	62502
1000 KCM LVC	24,000	40,730	-16730
12 Fiber SM FOC	289,504	336,530	-47026
XFR Box Pads	64	42	22
Controllers	64	64	0
Bases	64	64	0
Mids	64	64	0
Tops	64	64	0
Nacelles	64	64	0
Hubs	64	64	0
Blade Sets	64	64	0

Negative Number Indicates Overage of Cable

General Construction Status			
Roads Subgraded	47,558	99,651	47.7%
Roads Built	37,113	99,651	37.2%
Silt Fence Installed	2,274	11,417	19.9%
Foundations Excavated	30	64	46.9%
Foundations Poured	12	64	18.8%
Foundations Backfilled	6	64	9.4%
Crane Pads Completed	5	64	7.8%
Tower Base Sections Erected	0	64	0.0%
Tower Mid Sections Erected	0	64	0.0%
Tower Top Sections Erected	0	64	0.0%
Nacelles Installed	0	64	0.0%
Rotors Installed	0	64	0.0%
Tower Wiring Complete	0	64	0.0%
Final Commissioned	0	64	0.0%
4/0 Cable Trenched	0	157,430	0.0%
500 Cable Trenched	0	15,455	0.0%
1000 Cable Trenched	49,558	77,170	64.2%
(as of COB yesterday)			



Baldwin Wind, LLC

Plan of the Day (POD)

Date: Wednesday, 9-1-10
High: 74
Precipitation Chances: 40%

COD: 11-30-10
Low: 51

Days to COD: 91
Winds: S @ 13 mph
Weather Forecast: Cloudy

NextEra™ Energy Resources

Blattner Energy

Paradigm

GE

Safety/Environmental:

- Keep focused
- Use correct equipment for the job
- Fence off wetland as needed
- Installing silt fence

Civil/Erection:

- Subgrade string road 21-25
- Gravel string roads 16 & 27-28

Foundations:

- Foundation excavation at 30-31
- Pour mud mats 30-31 & 52
- Install bottom rebar mat at 42-43
- Install anchor bolts at 40-41
- Install top rebar mat at 40-42
- Form base at 40-41
- Pour base at 38-39
- Form pedestal at 32 & 36
- Pour pedestal at 33-35
- Backfill at 58-59
- Build crane at 58-59

Collection:

- Trench and install 4/0 at 61-63 & SP 901- SP 902
- Underground splicing at SP1003 & SP1103
- Setting transformer box pad at 64
- Low voltage wire at 60-62

Substation:

- Install control conduit
- Standing low side steel
- Install 2 grounding transformer bases

RECEIVING (As of COB yesterday)			
	Total	Received	Balance
PMT XFR	65	65	0
Grounding XFR	6	0	6
4/0 Cable	519,519	208,257	311,262
500 KCM	51,002	45,835	5,167
Copperclad	65,280	91,994	-26,714
1000 KCM	254,661	192,159	62,502
1000 KCM LVC	24,000	40,730	-16,730
12 Fiber SM FOC	289,504	336,530	-47,026
XFR Box Pads	64	64	0
Controllers	64	64	0
Bases	64	64	0
Mids	64	64	0
Tops	64	64	0
Nacelles	64	64	0
Hubs	64	64	0
Blade Sets	64	64	0

Negative Number Indicates Overage of Cable

General Construction Status

	Complete	Total	% Complete
Roads Subgraded	49,714	99,651	49.9%
Roads Built	37,713	99,651	37.8%
Silt Fence Installed	2,274	11,417	19.9%
Foundations Excavated	33	64	51.6%
Foundations Poured	14	64	21.9%
Foundations Backfilled	7	64	10.9%
Crane Pads Completed	7	64	10.9%
Tower Base Sections Erected	0	64	0.0%
Tower Mid Sections Erected	0	64	0.0%
Tower Top Sections Erected	0	64	0.0%
Nacelles Installed	0	64	0.0%
Rotors Installed	0	64	0.0%
Tower Wiring Complete	0	64	0.0%
Mechanically Complete	0	33	0.0%
Final Commissioned	0	64	0.0%
4/0 Cable Trenched	1,950	157,430	1.2%
500 Cable Trenched	0	15,455	0.0%
1000 Cable Trenched	54,588	77,170	70.7%
Transformers Set/Terminated	0	33	0.0%
(as of COB yesterday)			

