

Plan of the Day (POD)

Date: Thursday, 11-4-10
 High: 48
 Precipitation Chances: 0 %

COD: 11-30-10
 Low: 22

Days to COD: 27
 Winds: NNW @ 7 mph
 Weather Forecast: Sunny

NextEra™ Energy Resources Blattner Energy Paradigm GE

Safety/Environmental:

- Always use spotters
- Stay focused on task at hand

Civil/Erection:

- Reclaim at 12-15 & 21-22
- Erect base & mid at 1-2
- Assemble rotor at 1-2 & 17-18
- Erect top at 18-19
- Erect nacelle & rotor at 18-20

Foundations: Complete

Collection:

Electrical:

- Tower wiring at 20-21
- Mechanical completion at 21-23
- IIP at 24-26
- GE Commissioning at 27-29 & 44

Substation:

- Final rock work
- Control house cleanup
- Labeling

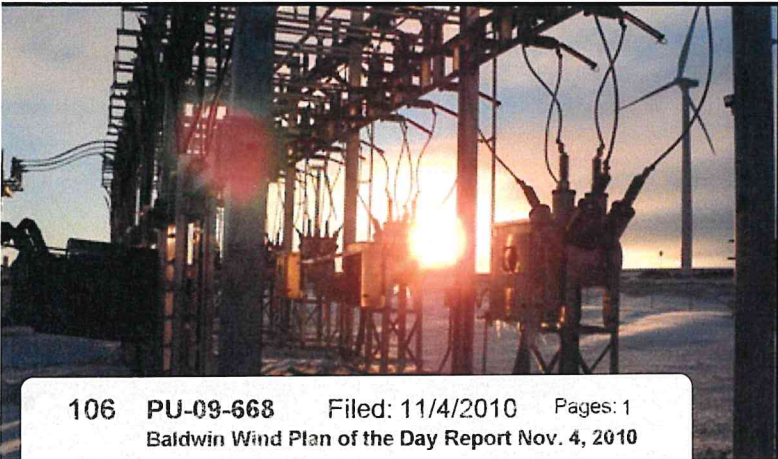
RECEIVING (As of COB yesterday)			
	Total	Received	Balance
PMT XFR	65	65	0
Grounding XFR	6	6	0
4/0 Cable	519,519	500,688	18831
500 KCM	51,002	58,397	-7395
Copperclad	65,280	73,906	-8626
1000 KCM	254,661	296,079	-41418
1000 KCM LVC	24,000	38,230	-14230
12 Fiber SM FOC	289,504	294,530	-5026
XFR Box Pads	64	64	0
Controllers	64	64	0
Bases	64	64	0
Mids	64	64	0
Tops	64	64	0
Nacelles	64	64	0
Hubs	64	64	0
Blade Sets	64	64	0

Negative Number Indicates Overage of Cable

General Construction Status

	Complete	Total	% Complete
Roads Subgraded	76,066	76,066	100.0%
Roads Built	76,066	76,066	100.0%
Silt Fence Installed	3,584	11,417	31.4%
Foundations Excavated	64	64	100.0%
Foundations Poured	64	64	100.0%
Foundations Backfilled	64	64	100.0%
Crane Pads Completed	64	64	100.0%
Tower Base Sections Erected	60	64	93.8%
Tower Mid Sections Erected	60	64	93.8%
Tower Top Sections Erected	56	64	87.5%
Nacelles Installed	55	64	85.9%
Rotors Installed	55	64	85.9%
Tower Wiring Complete	54	64	84.4%
Mechanically Complete	49	64	76.6%
Pre-Commissioned	24	64	37.5%
Commissioned	32	64	50.0%
4/0 Cable Trenched	149,724	149,724	100.0%
500 Cable Trenched	13,965	13,965	100.0%
1000 Cable Trenched	76,996	76,996	100.0%
Transformers Set/Terminated	64	64	100.0%

(as of COB yesterday)



106 PU-09-668 Filed: 11/4/2010 Pages: 1
 Baldwin Wind Plan of the Day Report Nov. 4, 2010

Baldwin Wind, LLC