

August 30, 2011

RECEIVED

AUG 31 2011

NORTH DAKOTA PUBLIC SERVICE COMMISSIONER
600 E. BOULEVARD DEPT 408
BISMARCK ND 58505-0480

PUBLIC SERVICE COMMISSION

Re: Proposed Minnkota 345kV Electric Transmission line (PU-09-370) across North Dakota School Trust land
Sheridan County
Township 146 North, Range 78 West
Section 8: W2

Grand Forks County
Township 151 North, Range 52 West
Section 36: NE4

Dear Commissioners,

We have been very busy with oil field activity on school trust land, but now that Minnkota is closer to choosing a specific route, we have taken a closer look at their proposed right of way across the nine quarters on seven sections of School Trust land that lie within the proposed project. Of the nine quarters there are three that we are requesting what we consider to be a minor reroute in order to avoid aggregate deposits and one of the last quarter sections of tall grass prairie on School Trust land.

In the W2 of section 8, T146N, R78W, Sheridan County, we are requesting that the proposed electric transmission line be moved approximately 1,300 feet west, as shown on the attached aerial photo, in order to avoid potentially mineable aggregate deposits on this tract.

The NE4 of section 36, T151N, R52W, Grand Forks County contains one of the last remnants of tall grass prairie on School Trust land. Native tall grass prairie is a rare plant community in North Dakota and in the U.S. in general and should be protected. We are asking that the proposed electric transmission line be moved to the W2 of section 36, also School Trust land, as shown on the attached aerial photo, to avoid the tall grass prairie in the NE4.

We do not have any concern with the proposed route on the remaining tracts.
If you have any questions, please call me at (701) 328-1916. Thank you.

Sincerely,



Michael L. Haupt, CPRM
Land Management Professional

Enclosure: Aerial photo

MLH/bkp
g:\support\ltrs\ltrs - bp\hptltrs bp.doc

106 **PU-09-670** Filed: 8/31/2011 Pages: 7
Letter comments with attachment

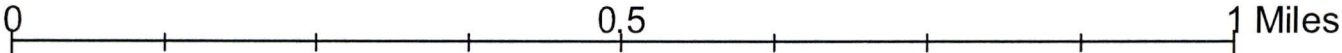
36-T151-R52

Grand Forks County

Township: Oakville



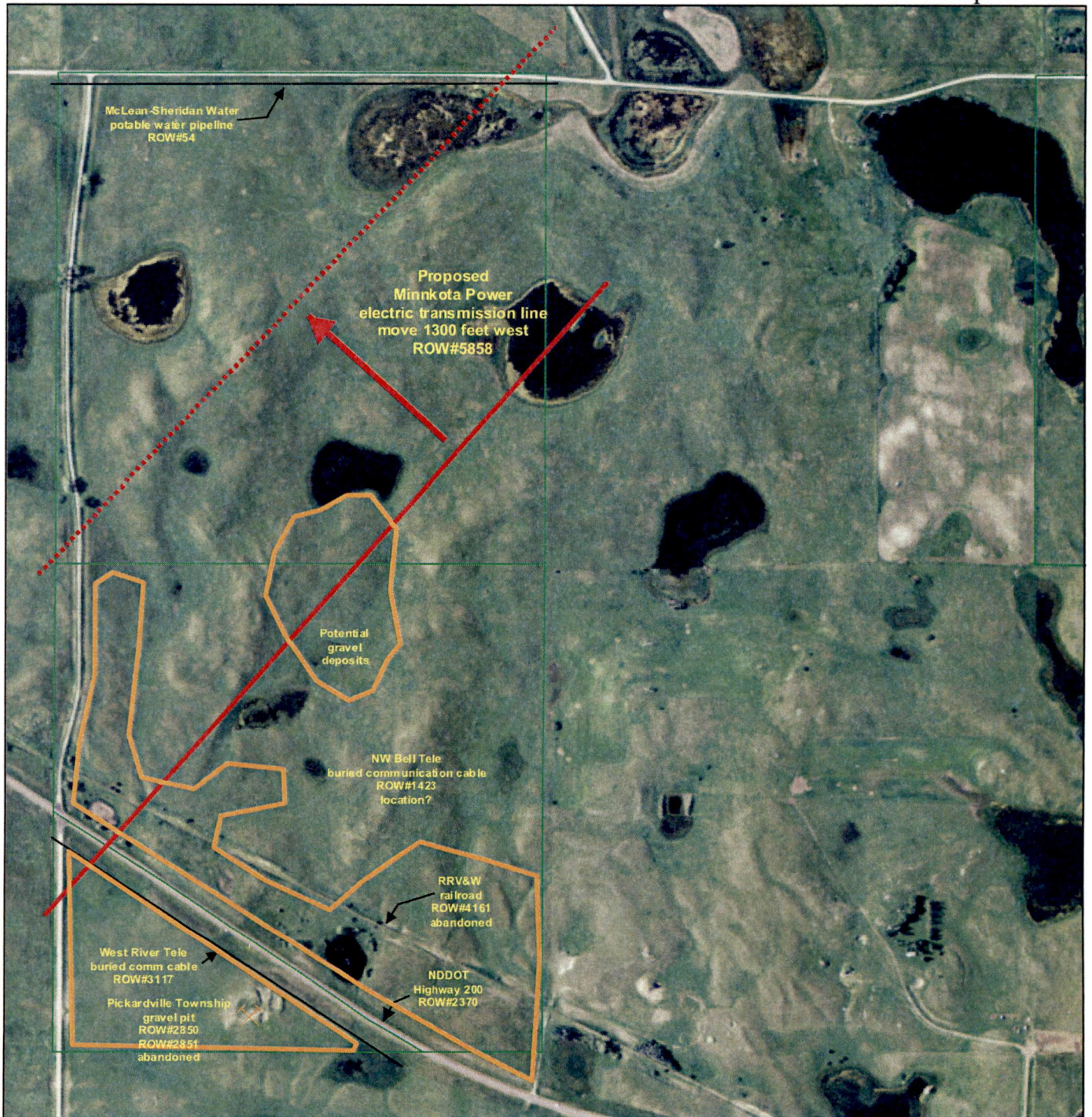
Map Datum is WGS 84 (same as NAD 83)



8-T146-R78

Sheridan County

Township: Pickard



Map Datum is WGS 84 (same as NAD 83)



Hamre, John G.

From: Lein, Jerry R.
Sent: Wednesday, August 31, 2011 11:58 AM
To: Hamre, John G.; Jeffcoat-Sacco, Illona; Sagsveen, Matthew A.
Subject: FW: Minnkota Power proposed 345kv electric transmission line (PU-09-370)
Attachments: landinfo@nd.gov_20110831_105704.pdf; 5858 psc ltr.pdf

From: Haupt, Michael L.
Sent: Wednesday, August 31, 2011 11:57 AM
To: -Info-Public Service Commission
Cc: Lein, Jerry R.; 'stephen.miller@kljeng.com'; Brand, Mike D.
Subject: Minnkota Power proposed 345kv electric transmission line (PU-09-370)

Commissioners,

Please include the attached comments dated August 30, 2011 with our comments submitted to Minnkota Power May 17, 2010 (also attached). We apologize for the late comments however Minnkota Power did not submit a request for an easement to cross school trust land until July 14, 2011. The Land Department is in review of Minnkota's proposed route but has not approved a route across school trust land at this time. Minnkota must obtain an easement before they cross trust lands. Please let me know if you have questions. Thanks.

Michael L. Haupt

Land Management Professional, CPRM
North Dakota State Land Department
PO Box 5523, Bismarck ND 58506-5523
701-328-1916
mhaupt@nd.gov

Note: You can track the real time status of your right-of-way application 24/7 at <http://www.land.nd.gov/surface/row/> using either the ROW number or by entering at least the first three letters of the company name. By checking this site you can find the name, telephone number and email address of the person working on the application as well as its current status in real time.

1707 North 9th Street
PO Box 5523
Bismarck, ND 58506-5523
Phone: (701) 328-2800
Fax: (701) 328-3650

www.land.nd.gov
www.nd.gov



Gary D. Preszler, Commissioner

May 17, 2010

MINNKOTA POWER COOPERATIVE INC
1822 MILL ROAD
PO BOX 13200
GRAND FORKS ND 58208-3200

Re: Comments from the ND State Land Department concerning the proposed
Minnkota Power Cooperative Center to Grand Forks 345-kilovolt
Electric Transmission Line Project and its effect on School Trust lands

Dear Sirs:

The ND State Land Department manages the School Trust lands in North Dakota, which were granted at statehood for the support of primary and secondary education. We have reviewed the preliminary maps provide by Minnkota Power and there are several School Trust tracts located within the proposed corridors. Some of these tracts have identifiable assets in addition to the current pastureland use, such as aggregate deposits, wind tower placement, or cultivated land. Construction of the electric transmission line would have a negative impact on these assets. There are also some tracts that would not be severely impacted or the future impact from the line is unknown.

The attached list identifies two groups of School Trust land: 1) Tracts not recommended for the proposed electric transmission line; and 2) Tracts that would be minimally impacted by the proposed electric transmission line.

The School Trust Fund is the largest land owner within the proposed project corridors and the ND State Land Department, on behalf of the School Trust, strongly favors the proposed southern most route, as this will have the least amount of impact on the documented resources on School Trust lands. When Minnkota Power is ready to apply for an easement, please submit an on-line application at <http://www.land.nd.gov/surface/row/>.

Sincerely,

Michael L. Haupt, CPRM
Land Management Professional

MLH/dj
g:\support\lhrs\lhrs - dj\lhrs.doc

Also submitted to
Minnkota web site
on May 21, 2010

TRACTS NOT RECOMMENDED FOR THE PROPOSED ELECTRIC TRANSMISSION LINE

Oliver 143-83-36 All: Minnkota proposes a route in the N2. Wind towers were requested on this tract by Florida Power and Light, and it contains mineable coal. Do not recommend electric transmission line for this tract.

Oliver 143-82-36 N2: Minnkota proposes a route in the N2. This tract is on the north side of the Cross Ranch and in the vicinity of wind towers. Do not recommend electric transmission line for this tract.

McLean 143-81-36 W2: Minnkota proposes a route in the W2. This tract has potential for cultivation and is in the vicinity of wind towers and has some topography that would favor wind towers. Do not recommend electric transmission line for this tract.

Sheridan 146-78-20 N2: Minnkota proposes a route in the N2. There are approximately 60 acres of Wabek soils in the N2, which represents a very large gravel deposit, with approximately 1230 feet along the north section line. Do not recommend electric transmission line for this tract.

Sheridan 146-78-8 W2: Minnkota proposes a route that cuts diagonally from southwest to northeast across the tract. The tract is severed by highway 200 in the SW4. There are nearly 85 acres of Wabek soils in the SW4, some of which have been mined for gravel, with approximately 2300 feet proposed to be crossed by the Minnkota line. Do not recommend electric transmission line for this tract.

Sheridan 146-78-14 S2, NE4: Minnkota proposes a route in the S2. There are approximately 5 acres of Lehr soils, which may contain gravel deposits, along the south section line for about 320 feet. The NE4 is severed by highway 200. Do not recommend electric transmission line for this tract.

Sheridan 147-76-8 SE4: Minnkota proposes a route east/west approximately through the center of this tract causing severance. This tract is pasture but has some topo suitable for wind towers. Do not recommend electric transmission line for this tract.

Sheridan 147-74-12 N2SE4, E2NE4: Minnkota proposes a route east/west approximately through the middle of the N2SE4 which severs this tract. This tract is all cropland with wetlands. Do not recommend electric transmission line for this tract.

Foster 147-63-22 NE4: Minnkota proposes a route along the north section line. This is pasture and contains a glacial feature that rises above the surrounding landscape. Do not recommend electric transmission line for this tract.

Griggs 148-61-36 SE4: Minnkota proposes a route along the south section line, although the actual route may be south of this tract because it is on the edge of their corridor. This tract has approximately 30 acres of Binford-Coe soils, which has potential for gravel deposits, with approximately 940 feet lying along the south section line. Do not recommend electric transmission line for this tract.

TRACTS MINIMALLY AFFECTED BY THE PROPOSED ELECTRIC TRANSMISSION LINE

McLean 146-79-36 All: Minnkota proposes a route along the west or east line. This tract is prairie pothole and does not appear to have significant topography for wind towers.

Sheridan 146-77-18 SE4: Minnkota proposes a route along the south section line that is kitty corner from the NW4 of section 20, which is also trust land, so one of these two tracts may be crossed by the electric transmission line. This tract is pasture and wetlands.

Sheridan 146-77-20 NW4: Minnkota proposes a route along the south section line that is kitty corner from the SE4 of section 18, which is also trust land, so one of these two tracts may be crossed by the electric transmission line. This tract is pasture and wetlands and lies adjacent to the McClusky Canal.

Sheridan 146-77-22 E2: Minnkota proposes a route along the south section line. This tract is pasture and wetlands.

Sheridan 147-78-36 SE4: Minnkota proposes to route along the east section line. This tract is pasture and wetlands.

Sheridan 147-77-30 SW4: Minnkota proposes a route along the west section line. This tract is half pasture and half cropland, with the pasture along the west side.

Sheridan 147-76-3 S2SE4: Minnkota proposes a route along the south section line or south across the section line on the north section line of the N2NE4 of section 10, which is also state land. This tract is half cropland.

Sheridan 147-76-10 N2NE4: Minnkota proposes a route along the north section line or north across the section line on the south section line of the S2SE4 of section 3, which is also state land. This tract is approximately half cropland.

Wells 147-70-28 NW4, SE4: Minnkota proposes a route on the east section line of SE4. This tract is pasture with the Rocky Run Creek drainage through both quarters.

Wells 147-71-2 NE4: Minnkota proposes a route along the north section line. This tract is pasture with lower lying soils.

Eddy 148-64-36 E2: Minnkota proposes a route along the south section line. This area is hay or considered cultivated.

Grand Forks 151-52-36 N2, SW4: Minnkota proposes a route along the east section line in the NE4. This tract is pastures with saline soils.