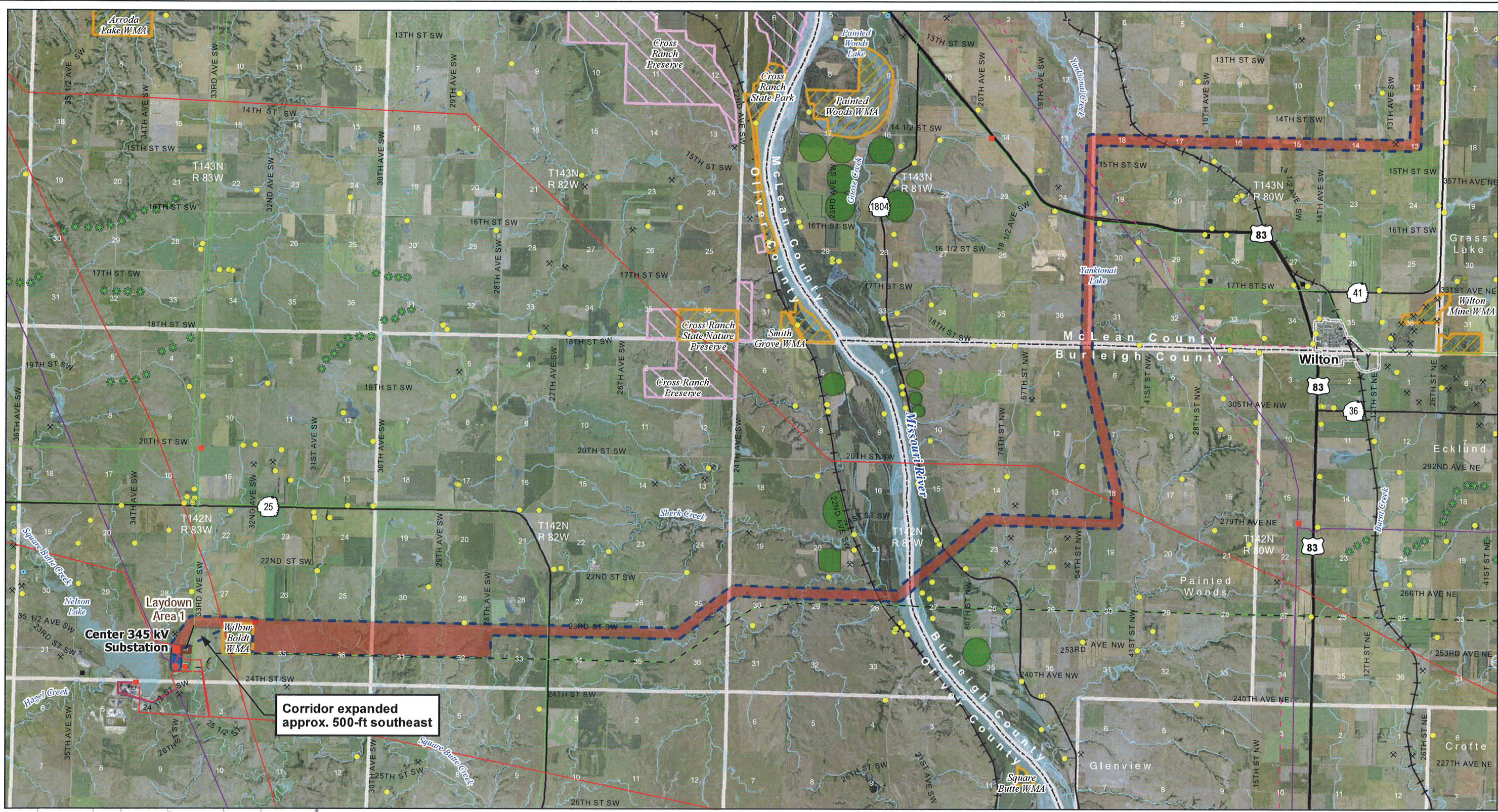
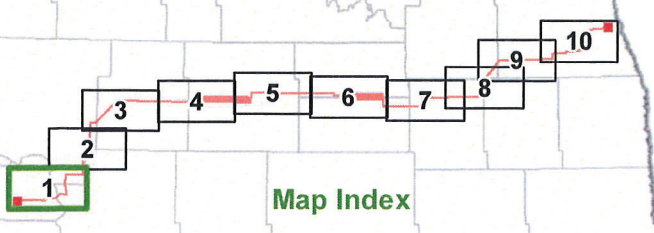


Date: 9/1/2011
Path: \\mapserver\minnkota\110900\map_data\SC\MapServer\Corridor\Routes\0110900\ICGF_Ext12_11x171_10p_Corridor\StandardCriteria_V2.mxd



Corridor expanded approx. 500-ft southeast



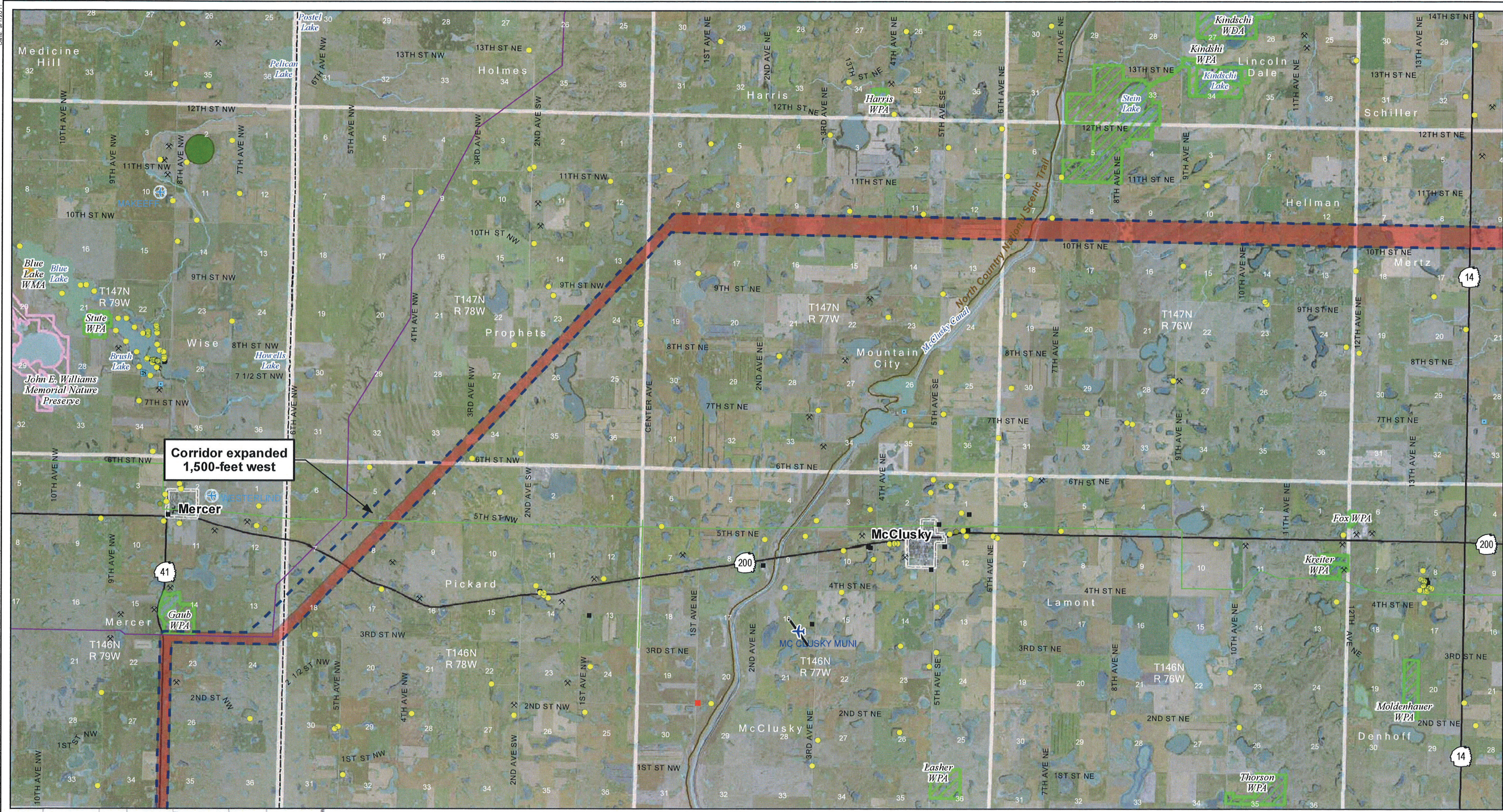
- | | | | | |
|--|---|---|--|---|
| <ul style="list-style-type: none"> ■ Project Corridor (filed September 1, 2011) ■ Project Corridor (updated August 10, 2011) ■ 230-kV Tie Line Corridor ■ Substation Laydown Area | <ul style="list-style-type: none"> — Existing Transmission Lines — 400-kV DC — 345-kV AC — 250-kV DC — 230-kV AC — 115-kV or less AC — Gas or Oil Pipeline | <ul style="list-style-type: none"> ● Home within Corridor ● Home ■ School ■ Business ■ Recreation ⊗ Gravel Pit or Mine ● Dump or Landfill | <ul style="list-style-type: none"> ■ Wind Turbine State Park, Recreation Area or WMA USFWS WPA or WDA USFWS NWR USBOR Land TNC Preserve | <ul style="list-style-type: none"> ● Irrigated Land Incorporated Area ✈ Public Airport ✈ Private Airport — USGS River, Stream or Canal — NWI Wetland |
|--|---|---|--|---|

Exhibit 12a - September 1, 2011
 Modified Project Corridor
 Center to Grand Forks Project
 Minnkota Power Cooperative, Inc.

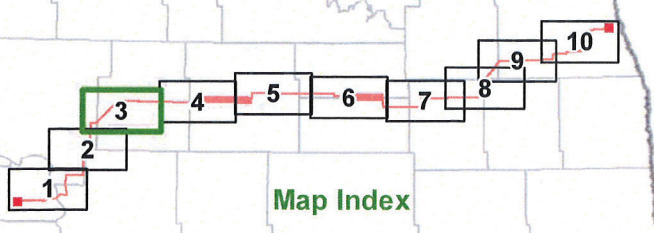
0 1 2 Miles
 Scale 1:100,000

Aerial photography published by National Agriculture Imagery Program (NAIP), 2009.

Date: 9/1/2011
Path: \\spc-qls-filer\user\l\minnkota\110900\mwp_dps\12\SPC\Map\Corridor\Routes\20110901\CGF_Exp12_11x17L_10p_Corridor_SitingCriteria_v2.mxd



**Corridor expanded
1,500-foot west**



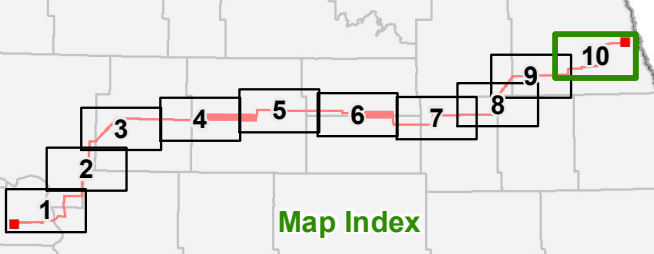
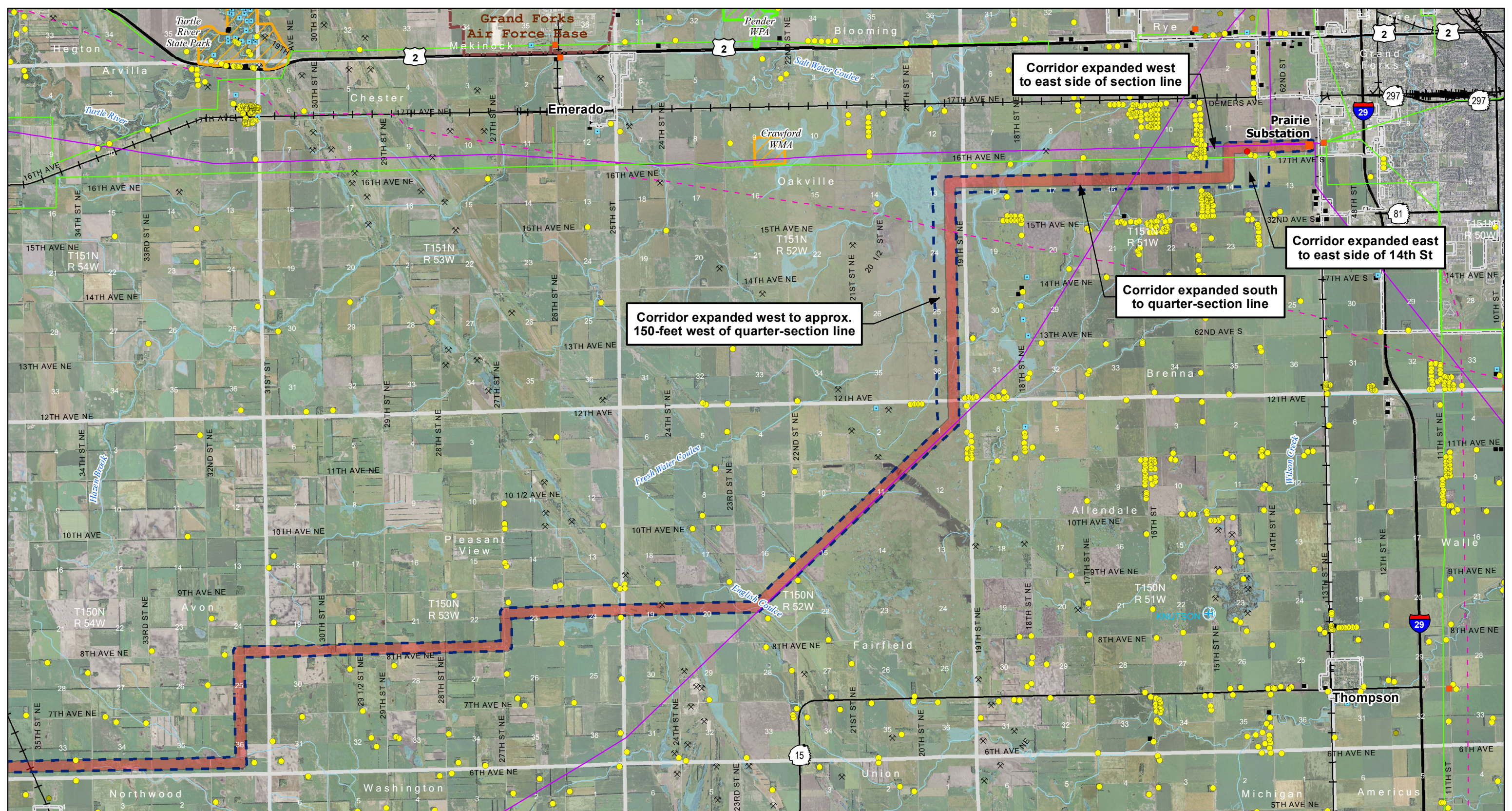
- | | | | |
|--|-----------------------------|----------------------|------------------------------------|
| Project Corridor (filed September 1, 2011) | Existing Transmission Lines | Home within Corridor | Wind Turbine |
| Project Corridor (updated August 10, 2011) | 400-kV DC | Home | State Park, Recreation Area or WMA |
| 230-kV Tie Line Corridor | 345-kV AC | School | USFWS WPA or WDA |
| Substation | 250-kV DC | Business | USFWS NWR |
| Laydown Area | 230-kV AC | Recreation | USBOR Land |
| | 115-kV or less AC | Gravel Pit or Mine | TNC Preserve |
| | Gas or Oil Pipeline | Dump or Landfill | Incorporated Area |
| | | | Public Airport |
| | | | Private Airport |
| | | | USGS River, Stream or Canal |
| | | | NWI Wetland |

Exhibit 12c - September 1, 2011
 Modified Project Corridor
 Center to Grand Forks Project
 Minnkota Power Cooperative, Inc.

0 1 2 Miles
 Scale 1:100,000

Aerial photography published by National Agriculture Imagery Program (NAIP), 2009.

Date: 9/2/2011
 Path: \\mspc-qc-files\isro\Minncota\110900\man_docs\PSO\Hearings\Corridor\Routes\20110901\CGF_Ekh12_11x17L-10p_Corridor_Siting_Criteria.mxd



- | | | | | |
|--|-----------------------------|----------------------|------------------------------------|-----------------------------|
| Project Corridor (filed September 1, 2011) | Existing Transmission Lines | Home within Corridor | Wind Turbine | Irrigated Land |
| Project Corridor (updated August 10, 2011) | 400-kV DC | Home | State Park, Recreation Area or WMA | Incorporated Area |
| 230-kV Tie Line Corridor | 345-kV AC | School | USFWS WPA or WDA | Public Airport |
| Substation | 250-kV DC | Business | USFWS NWR | Private Airport |
| Laydown Area | 230-kV AC | Recreation | USBOR Land | USGS River, Stream or Canal |
| | 115-kV or less AC | Gravel Pit or Mine | TNC Preserve | NWI Wetland |
| | Gas or Oil Pipeline | Dump or Landfill | | |

Exhibit 12j - September 1, 2011
 Modified Project Corridor
 Center to Grand Forks Project
 Minncota Power Cooperative, Inc.

0 1 2 Miles
 Scale 1:100,000

Aerial photography published by National Agriculture Imagery Program (NAIP), 2009.