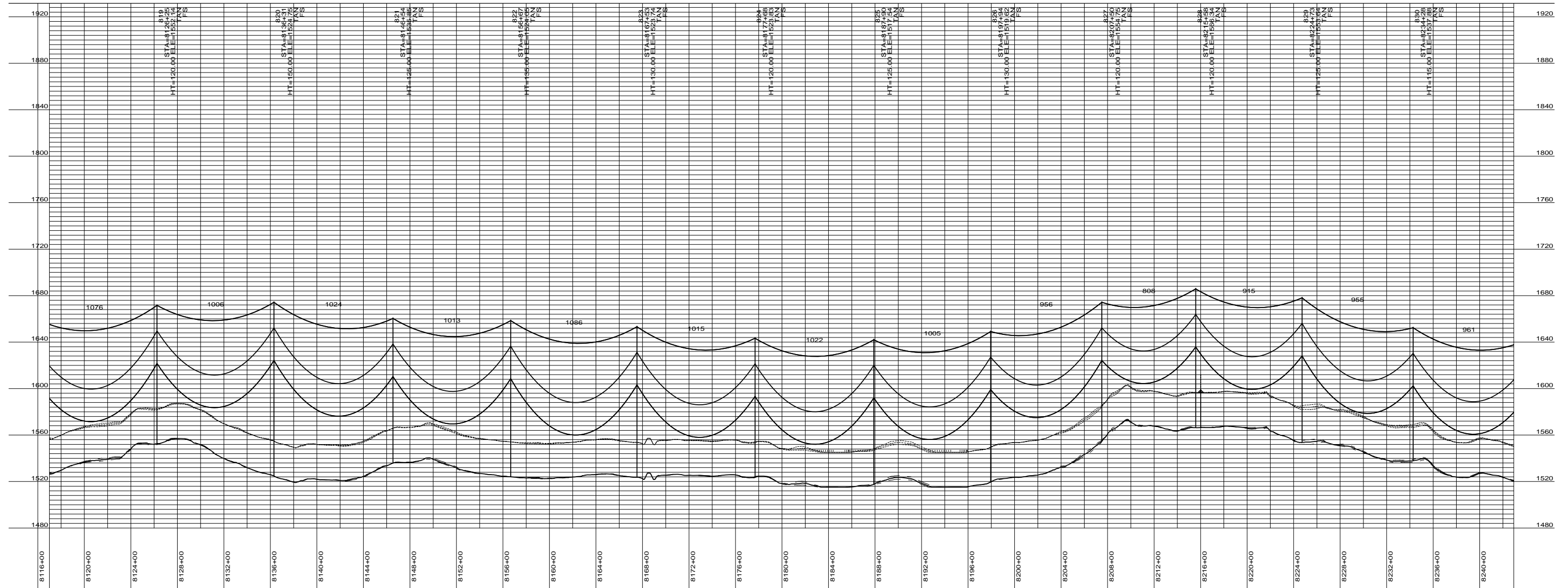
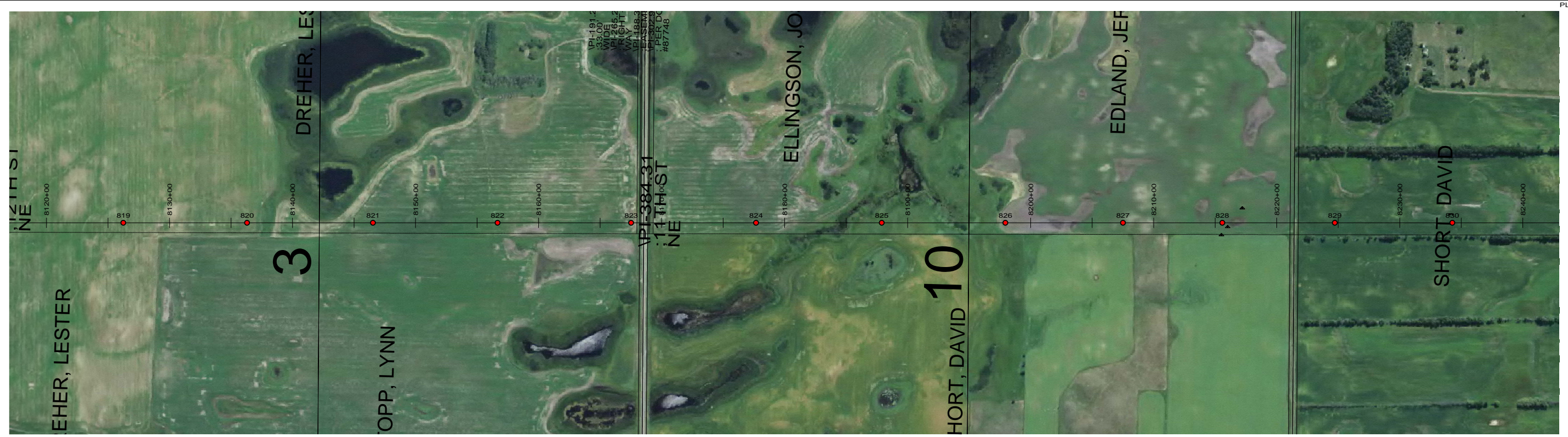


PRELIMINARY



DESIGN CONDITIONS:
 SHIELD _____
 20% RTS @ -20 DEGREES F, INITIAL CLEARANCE LINE: XX'

CONDUCTOR _____
 20% RTS @ -20 DEGREES F, INITIAL

REV	DATE	APP	DESCRIPTION	DFTR

8000 S. CHESTER STREET
 SUITE 500
 CENTENNIAL, CO 80112

A STANLEY GROUP COMPANY
 ENGINEERING, ENVIRONMENTAL AND
 CONSTRUCTION SERVICES - WORLDWIDE

DESIGNED	XXXXX
DRAWN	XXXXX
CHECKED	XXXXX
APPROVED	XXXXX
DATE	2/7/2012

Center to Grand Forks Project

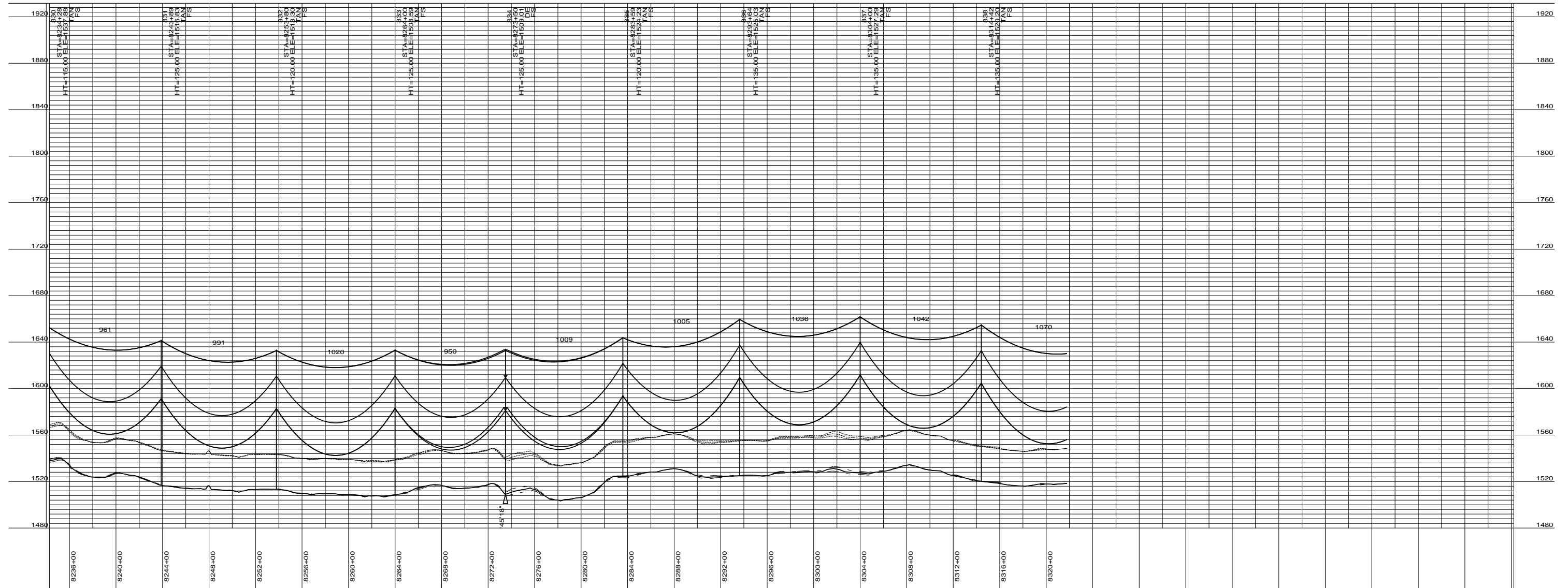
COOPERATIVE, INC.

FOSTER COUNTY

400.0 FT. — HORIZ. SCALE
 40.0 FT. — VERT. SCALE

55-PP-FS000-001

PRELIMINARY



DESIGN CONDITIONS:
 SHIELD _____
 20% RTS @ -20 DEGREES F, INITIAL CLEARANCE LINE: XX'

CONDUCTOR _____
 20% RTS @ -20 DEGREES F, INITIAL

REV	DATE	APP	DESCRIPTION	DFTR



Stanley Consultants INC.

8000 S. CHESTER STREET
 SUITE 500
 CENTENNIAL, CO 80112

A STANLEY GROUP COMPANY
 ENGINEERING, ENVIRONMENTAL AND
 CONSTRUCTION SERVICES - WORLDWIDE

DESIGNED XXXXX
 DRAWN XXXXX
 CHECKED XXXXX
 APPROVED XXXXX
 DATE 2/7/2012


Center to Grand Forks Project



Minnkota Power
 COOPERATIVE, INC.

FOSTER COUNTY

400.0 FT. — HORIZ. SCALE
 40.0 FT. — VERT. SCALE



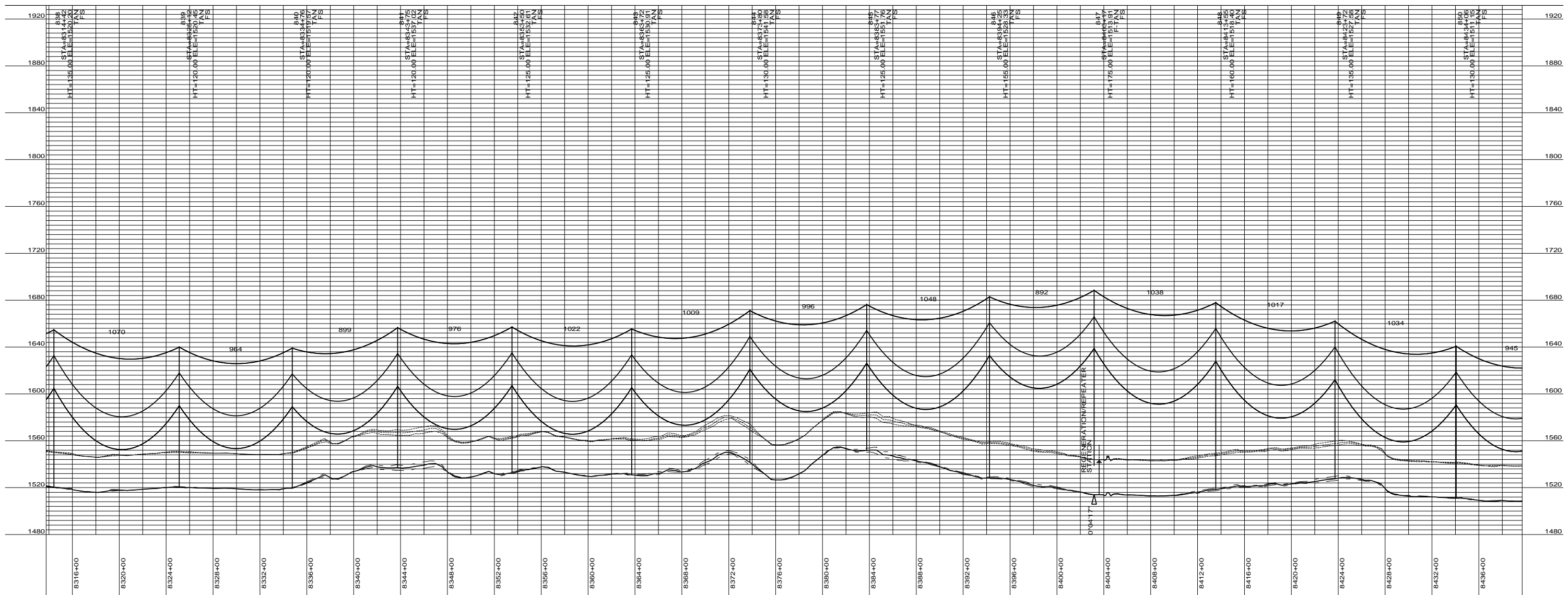
55-PP-FS000-002

PRELIMINARY



VPI-357.66
 : APPROX.
 : 33.00
 : WIDE
 VPI-311.99
 : DAKOTA
 : CENTRAL
 VPI-378.66
 : FEED
 : COOP
 VPI-454.1
 : RIGHT OF
 : WAY
 : EASEMENT
 VPI-300.16
 : PER DOC.
 # 96358

REGENERATION/REPEATER
 STATION



DESIGN CONDITIONS:
 SHIELD _____
 20% RTS @ -20 DEGREES F, INITIAL
 CLEARANCE LINE: XX'

CONDUCTOR _____
 20% RTS @ -20 DEGREES F, INITIAL

REV	DATE	APP	DESCRIPTION	DFTR

Stanley Consultants INC.

8000 S. CHESTER STREET
 SUITE 500
 CENTENNIAL, CO 80112

A STANLEY GROUP COMPANY
 ENGINEERING, ENVIRONMENTAL AND
 CONSTRUCTION SERVICES - WORLDWIDE

DESIGNED	XXXXX
DRAWN	XXXXX
CHECKED	XXXXX
APPROVED	XXXXX
DATE	2/7/2012

Center to Grand Forks Project

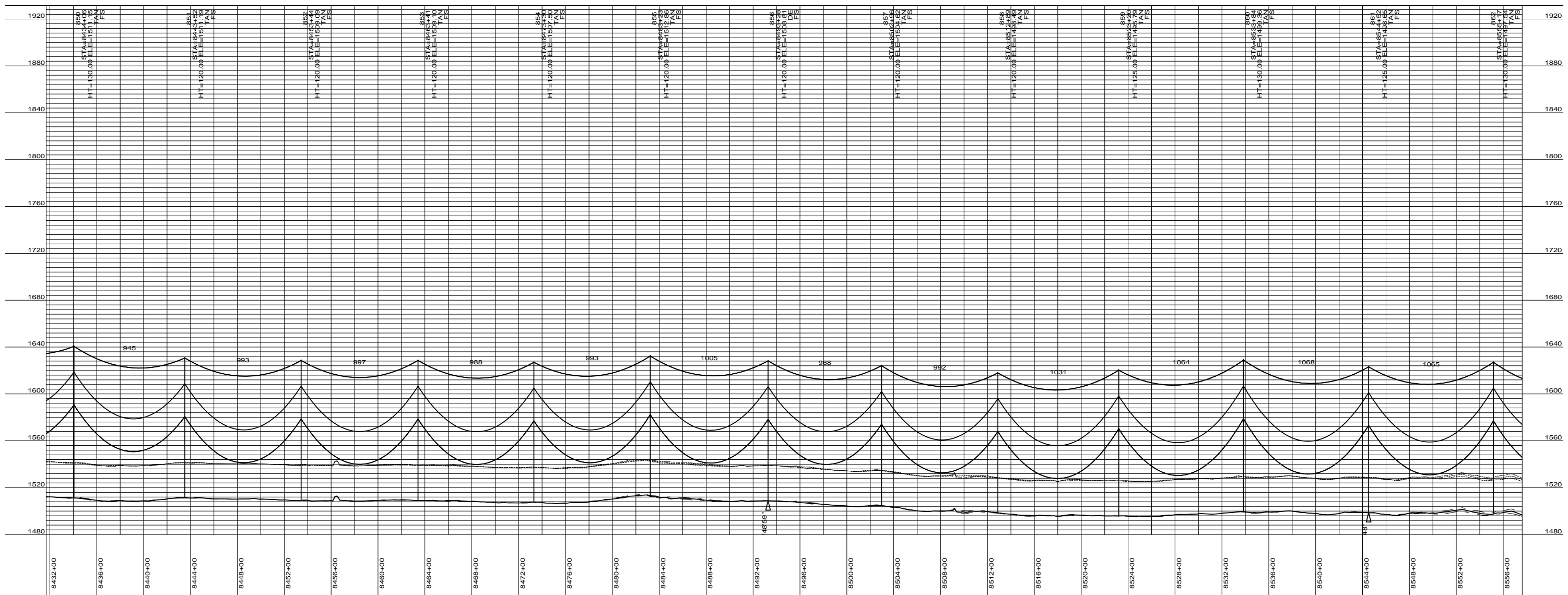
Minnkota Power
 COOPERATIVE, INC.

FOSTER COUNTY

400.0 FT. HORIZ. SCALE
 40.0 FT. VERT. SCALE

55-PP-FS000-003

PRELIMINARY



DESIGN CONDITIONS:
 SHIELD _____
 20% RTS @ -20 DEGREES F, INITIAL CLEARANCE LINE: XX'
 CONDUCTOR _____
 20% RTS @ -20 DEGREES F, INITIAL

REV	DATE	APP	DESCRIPTION	DFTR



Stanley Consultants INC.
 A STANLEY GROUP COMPANY
 ENGINEERING, ENVIRONMENTAL AND
 CONSTRUCTION SERVICES - WORLDWIDE

8000 S. CHESTER STREET
 SUITE 500
 CENTENNIAL, CO 80112

DESIGNED	XXXXX
DRAWN	XXXXX
CHECKED	XXXXX
APPROVED	XXXXX
DATE	2/7/2012


Center to Grand Forks Project



Minnkota Power
 COOPERATIVE, INC.

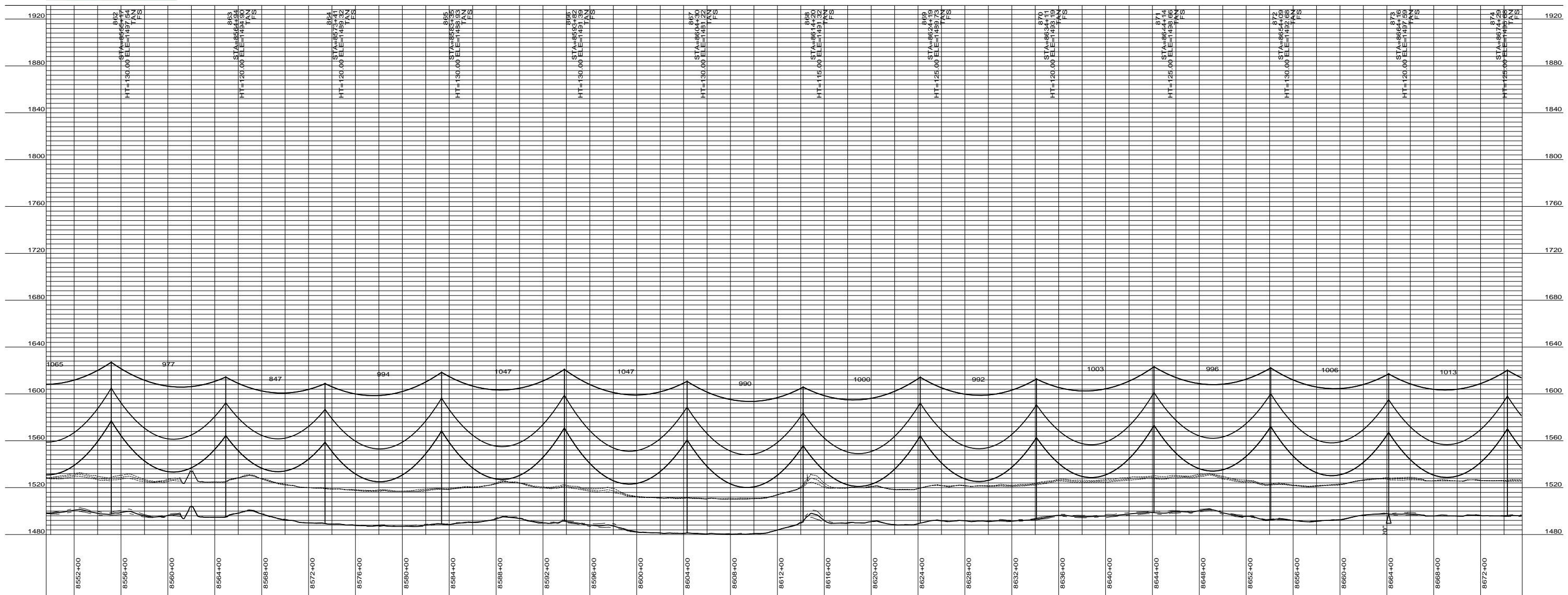
FOSTER COUNTY

400.0 FT. ———— HORIZ. SCALE
 40.0 FT. ———— VERT. SCALE



55-PP-FS000-004

PRELIMINARY



DESIGN CONDITIONS:
 SHIELD _____
 20% RTS @ -20 DEGREES F, INITIAL CLEARANCE LINE: XX'

CONDUCTOR _____
 20% RTS @ -20 DEGREES F, INITIAL

REV	DATE	APP	DESCRIPTION	DFTR

8000 S. CHESTER STREET
 SUITE 500
 CENTENNIAL, CO 80112

A STANLEY GROUP COMPANY
 ENGINEERING, ENVIRONMENTAL AND
 CONSTRUCTION SERVICES - WORLDWIDE

DESIGNED	XXXXX
DRAWN	XXXXX
CHECKED	XXXXX
APPROVED	XXXXX
DATE	2/7/2012

Center to Grand Forks Project

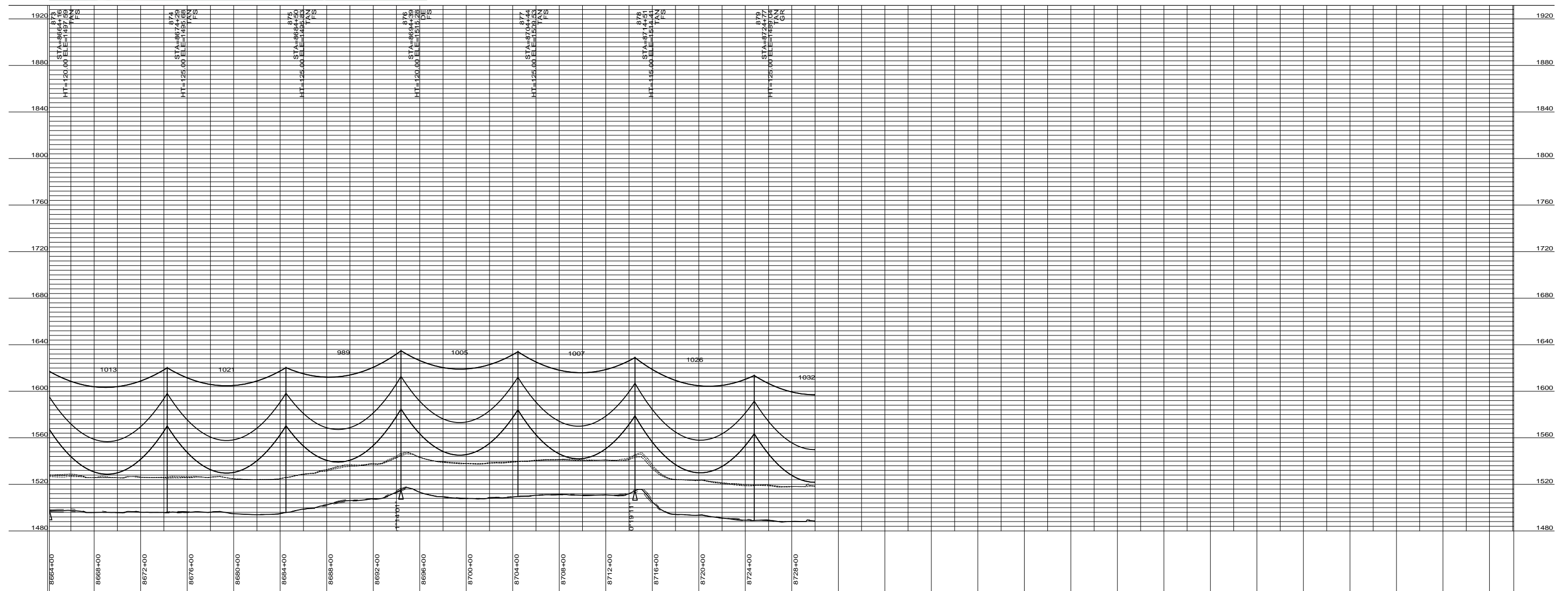
COOPERATIVE, INC.

FOSTER COUNTY

400.0 FT. HORIZ. SCALE
 40.0 FT. VERT. SCALE

55-PP-FS000-005

PRELIMINARY



DESIGN CONDITIONS:
 SHIELD _____
 20% RTS @ -20 DEGREES F, INITIAL CLEARANCE LINE: XX'
 CONDUCTOR _____
 20% RTS @ -20 DEGREES F, INITIAL

REV	DATE	APP	DESCRIPTION	DFTR



8000 S. CHESTER STREET
 SUITE 500
 CENTENNIAL, CO 80112

A STANLEY GROUP COMPANY
 ENGINEERING, ENVIRONMENTAL AND
 CONSTRUCTION SERVICES - WORLDWIDE

DESIGNED	XXXXX
DRAWN	XXXXX
CHECKED	XXXXX
APPROVED	XXXXX
DATE	2/7/2012


Center to Grand Forks Project



COOPERATIVE, INC.

FOSTER COUNTY

400.0 FT. HORIZ. SCALE
 40.0 FT. VERT. SCALE



55-PP-FS000-006