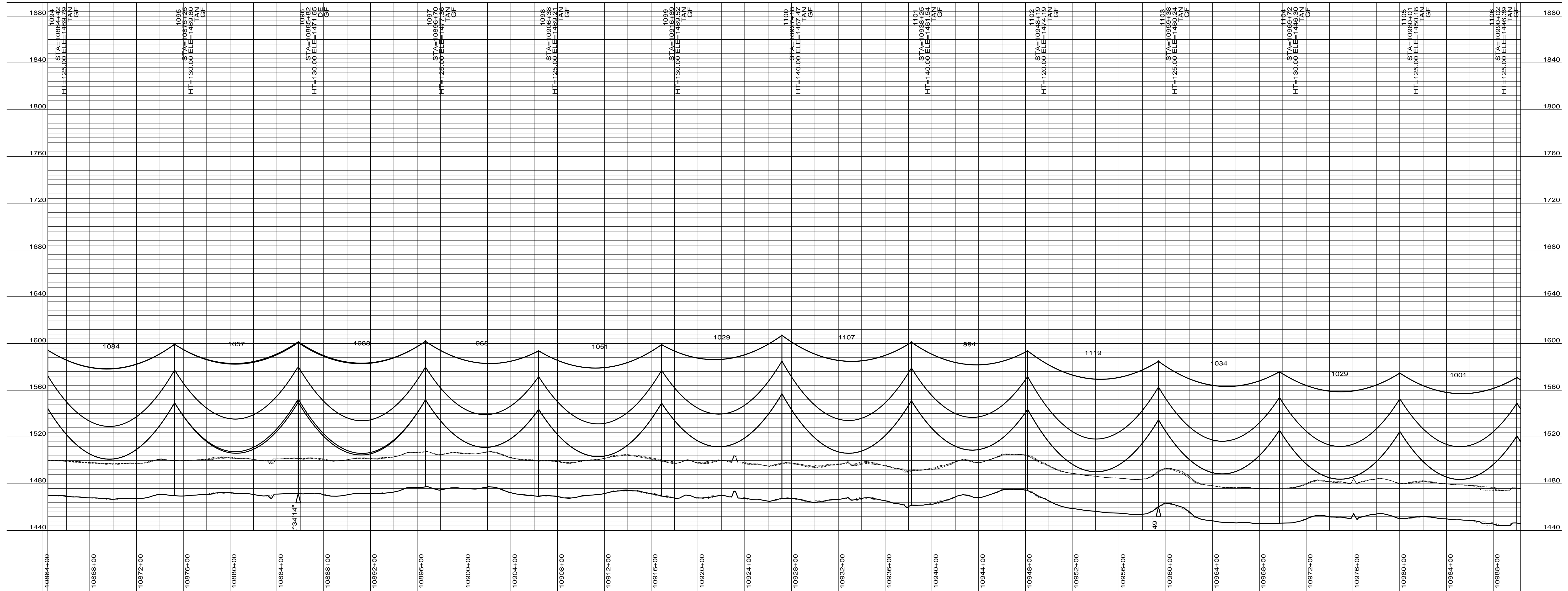


PRELIMINARY



DESIGN CONDITIONS:
 SHIELD
 20% RTS @ -20 DEGREES F, INITIAL
 CLEARANCE LINE: XX'

CONDUCTOR
 20% RTS @ -20 DEGREES F, INITIAL

REV	DATE	APP	DESCRIPTION	DFTR

8000 S. CHESTER STREET
 SUITE 500
 CENTENNIAL, CO 80112

A STANLEY GROUP COMPANY
 ENGINEERING, ENVIRONMENTAL AND
 CONSTRUCTION SERVICES - WORLDWIDE

DESIGNED	XXXXX
DRAWN	XXXXX
CHECKED	XXXXX
APPROVED	XXXXX
DATE	2/7/2012

Center to Grand Forks Project

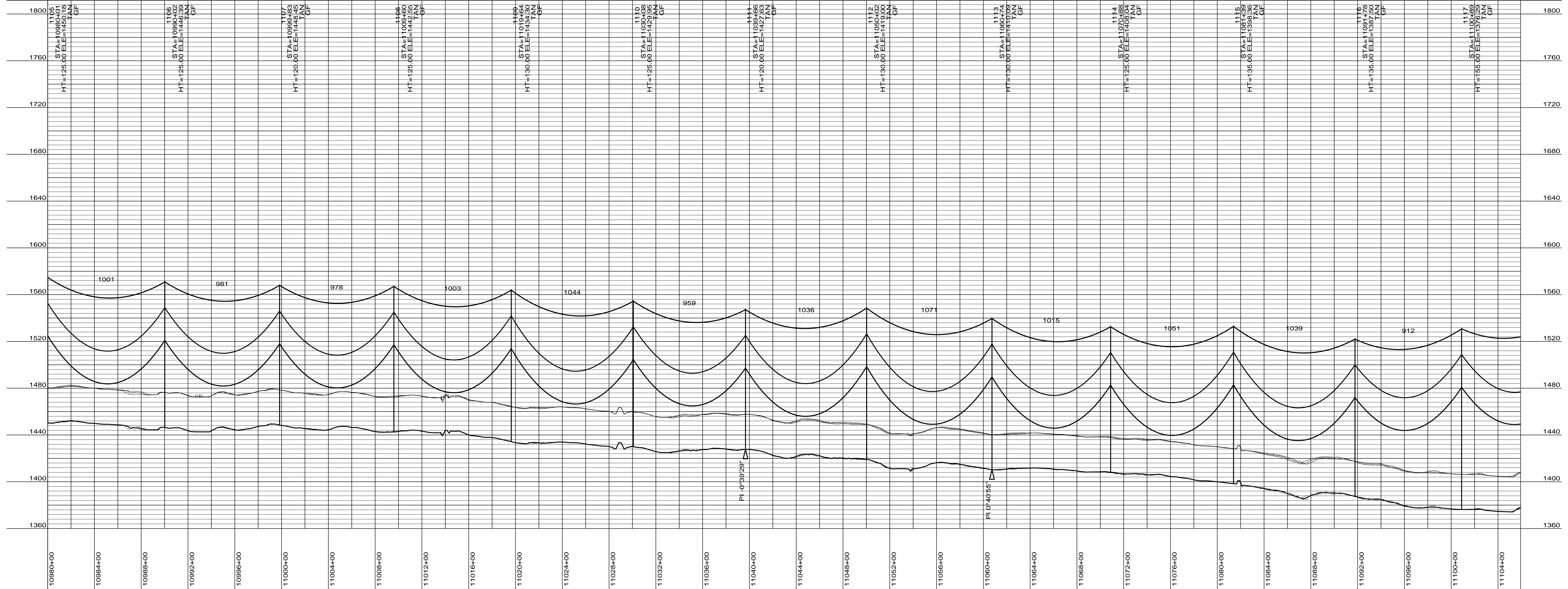
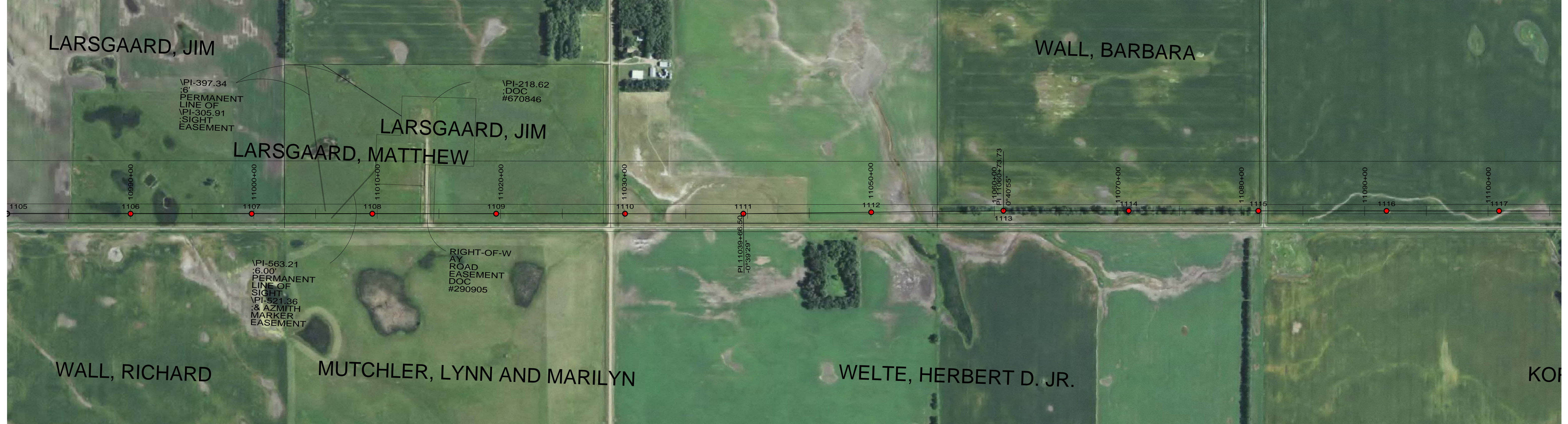
Minnkota Power
 COOPERATIVE, INC.

GRAND FORKS COUNTY

400.0 FT. HORIZ. SCALE
 40.0 FT. VERT. SCALE

55-PP-GF000-001

PRELIMINARY



DESIGN CONDITIONS:
SHIELD _____
20% RTS @ -20 DEGREES F, INITIAL CLEARANCE LINE: XX'

CONDUCTOR _____
20% RTS @ -20 DEGREES F, INITIAL CLEARANCE LINE: XX'

REV	DATE	APP	DESCRIPTION	DFTR



8000 S. CHESTER STREET
SUITE 500
CENTENNIAL, CO 80112

A STANLEY GROUP COMPANY
ENGINEERING, ENVIRONMENTAL AND
CONSTRUCTION SERVICES - WORLDWIDE

DESIGNED XXXXX
DRAWN XXXXX
CHECKED XXXXX
APPROVED XXXXX
DATE 2/7/2012


Center to Grand Forks Project



MPC COOPERATIVE, INC.

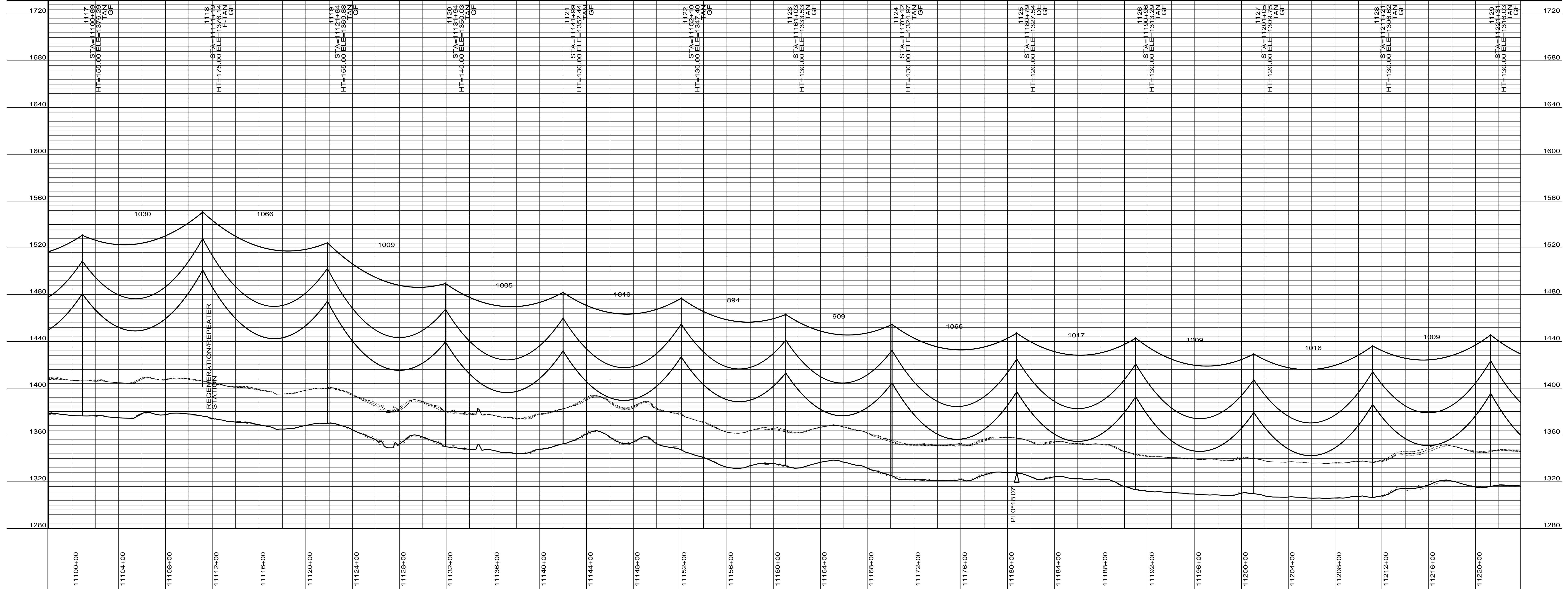
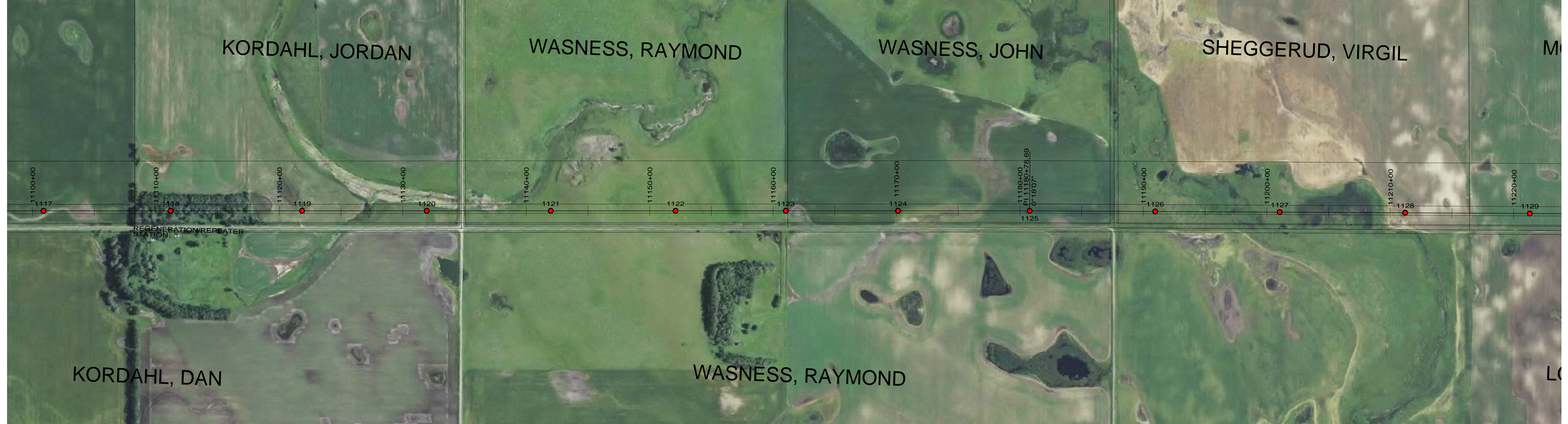
GRAND FORKS COUNTY

400.0 FT. HORIZ. SCALE
40.0 FT. VERT. SCALE



55-PP-GF000-002

PRELIMINARY



DESIGN CONDITIONS:
 SHIELD _____
 20% RTS @ -20 DEGREES F, INITIAL CLEARANCE LINE: XX'

CONDUCTOR _____
 20% RTS @ -20 DEGREES F, INITIAL CLEARANCE LINE: XX'

REV	DATE	APP	DESCRIPTION	DFTR



Stanley Consultants INC.

8000 S. CHESTER STREET
 SUITE 500
 CENTENNIAL, CO 80112

A STANLEY GROUP COMPANY
 ENGINEERING, ENVIRONMENTAL AND
 CONSTRUCTION SERVICES - WORLDWIDE

DESIGNED _____ XXXXX
 DRAWN _____ XXXXX
 CHECKED _____ XXXXX
 APPROVED _____ XXXXX
 DATE 2/7/2012


Center to Grand Forks Project



Minnkota Power
 COOPERATIVE, INC.

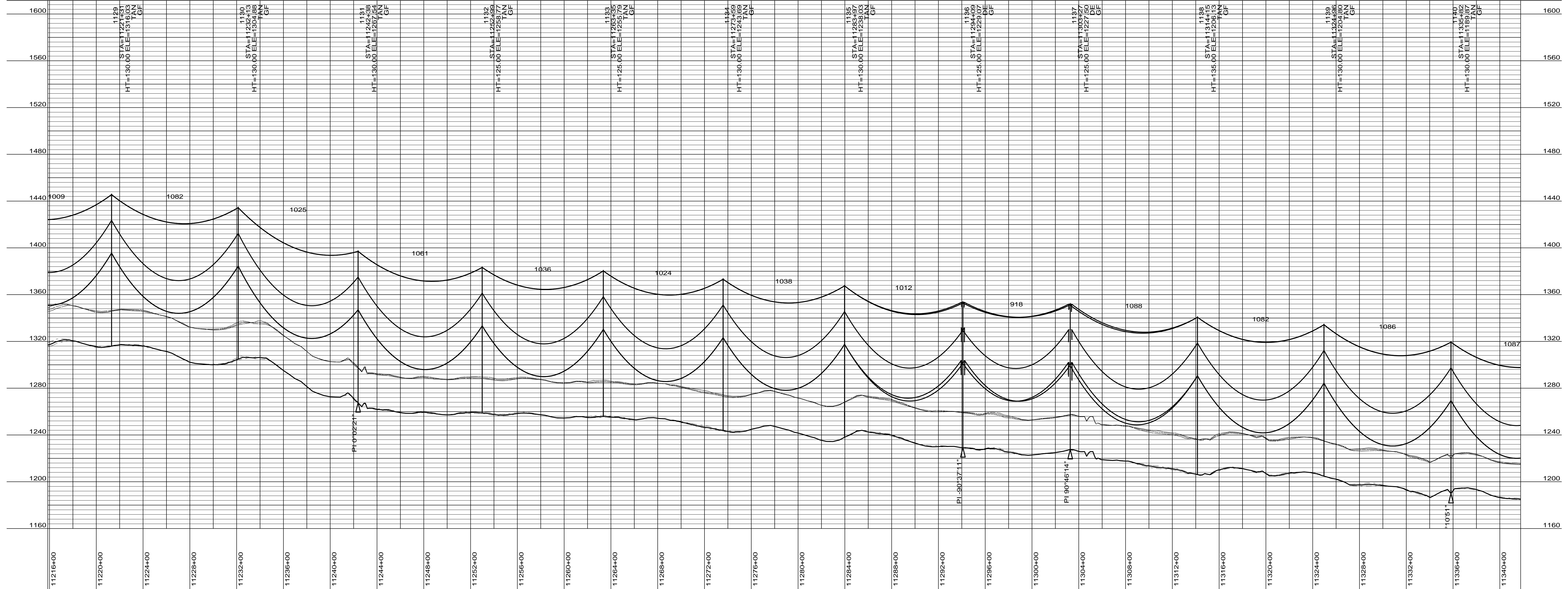
GRAND FORKS COUNTY

400.0 FT. HORIZ. SCALE
 40.0 FT. VERT. SCALE



55-PP-GF000-003

PRELIMINARY



DESIGN CONDITIONS:
 SHIELD _____
 20% RTS @ -20 DEGREES F, INITIAL CLEARANCE LINE: XX'
 CONDUCTOR _____
 20% RTS @ -20 DEGREES F, INITIAL CLEARANCE LINE: XX'

REV	DATE	APP	DESCRIPTION	DFTR

8000 S. CHESTER STREET
 SUITE 500
 CENTENNIAL, CO 80112

A STANLEY GROUP COMPANY
 ENGINEERING, ENVIRONMENTAL AND
 CONSTRUCTION SERVICES - WORLDWIDE

DESIGNED XXXXX
 DRAWN XXXXX
 CHECKED XXXXX
 APPROVED XXXXX
 DATE 2/7/2012

Center to Grand Forks Project

MPC COOPERATIVE, INC.

GRAND FORKS COUNTY

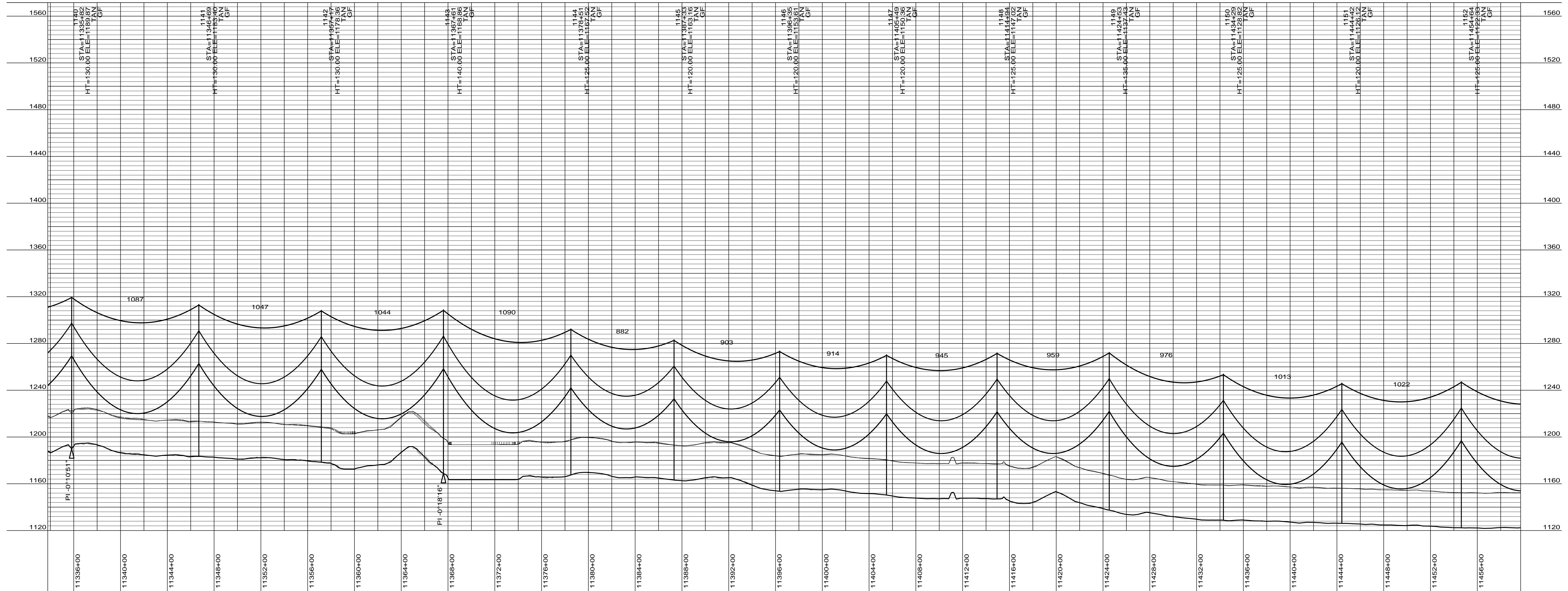
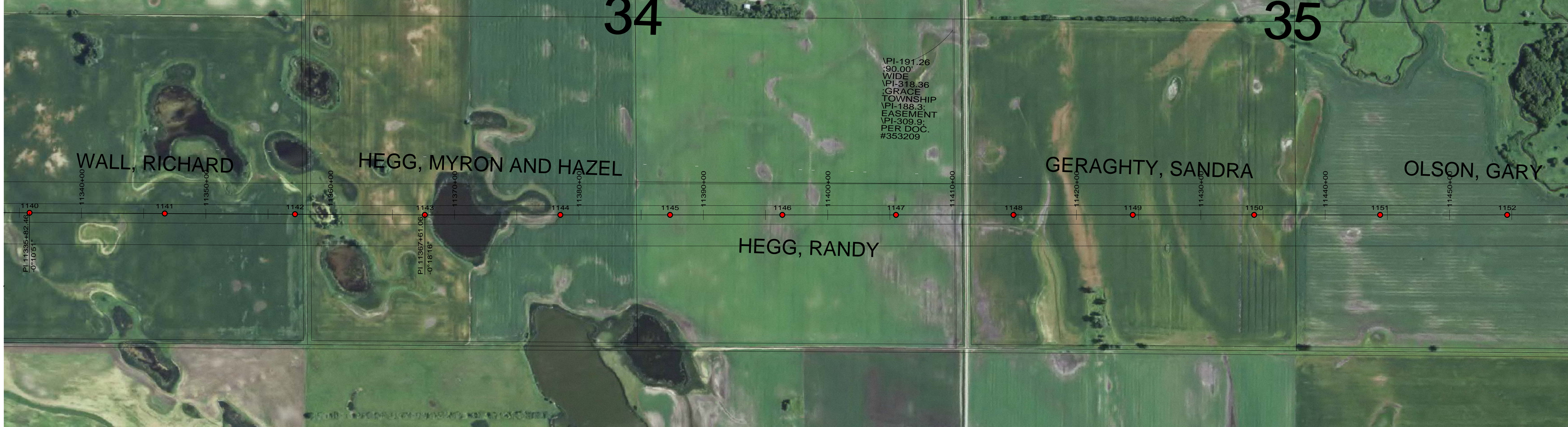
400.0 FT. HORIZ. SCALE
 40.0 FT. VERT. SCALE

55-PP-GF000-004

PRELIMINARY

34

35



DESIGN CONDITIONS:
SHIELD
20% RTS @ -20 DEGREES F, INITIAL
CLEARANCE LINE: XX'

CONDUCTOR
20% RTS @ -20 DEGREES F, INITIAL

REV	DATE	APP	DESCRIPTION	DFTR

8000 S. CHESTER STREET
SUITE 500
CENTENNIAL, CO 80112

A STANLEY GROUP COMPANY
ENGINEERING, ENVIRONMENTAL AND
CONSTRUCTION SERVICES - WORLDWIDE

DESIGNED XXXXX
DRAWN XXXXX
CHECKED XXXXX
APPROVED XXXXX
DATE 2/7/2012

Center to Grand Forks Project

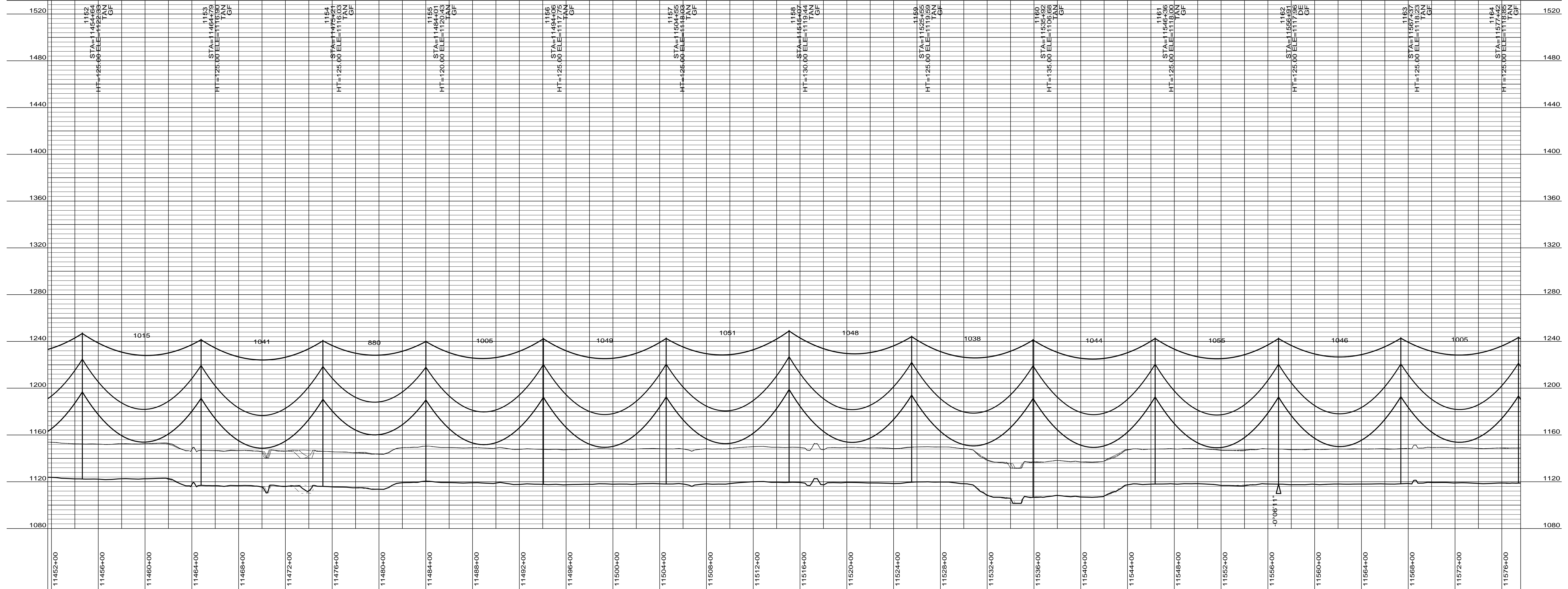
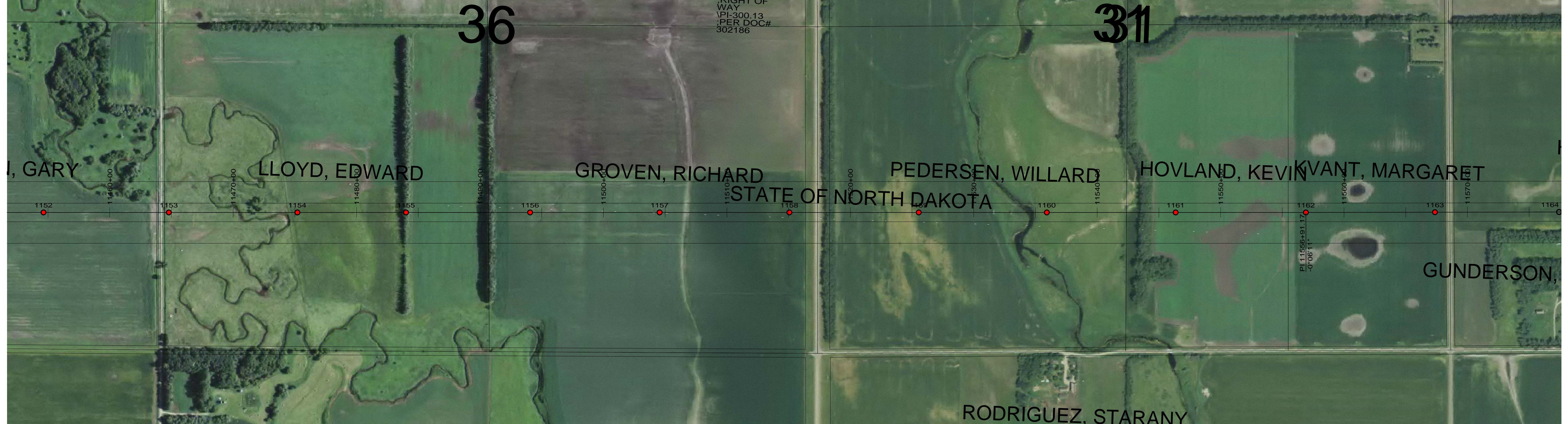
MPC COOPERATIVE, INC.

GRAND FORKS COUNTY

400.0 FT. HORIZ. SCALE
40.0 FT. VERT. SCALE

55-PP-GF000-005

PRELIMINARY



DESIGN CONDITIONS:
 SHIELD _____
 20% RTS @ -20 DEGREES F, INITIAL CLEARANCE LINE: XX'

CONDUCTOR _____
 20% RTS @ -20 DEGREES F, INITIAL CLEARANCE LINE: XX'

REV	DATE	APP	DESCRIPTION	DFTR



8000 S. CHESTER STREET
 SUITE 500
 CENTENNIAL, CO 80112

A STANLEY GROUP COMPANY
 ENGINEERING, ENVIRONMENTAL AND
 CONSTRUCTION SERVICES - WORLDWIDE

DESIGNED XXXXX
 DRAWN XXXXX
 CHECKED XXXXX
 APPROVED XXXXX
 DATE 2/7/2012


Center to Grand Forks Project



MPC COOPERATIVE, INC.

GRAND FORKS COUNTY

400.0 FT. HORIZ. SCALE
 40.0 FT. VERT. SCALE



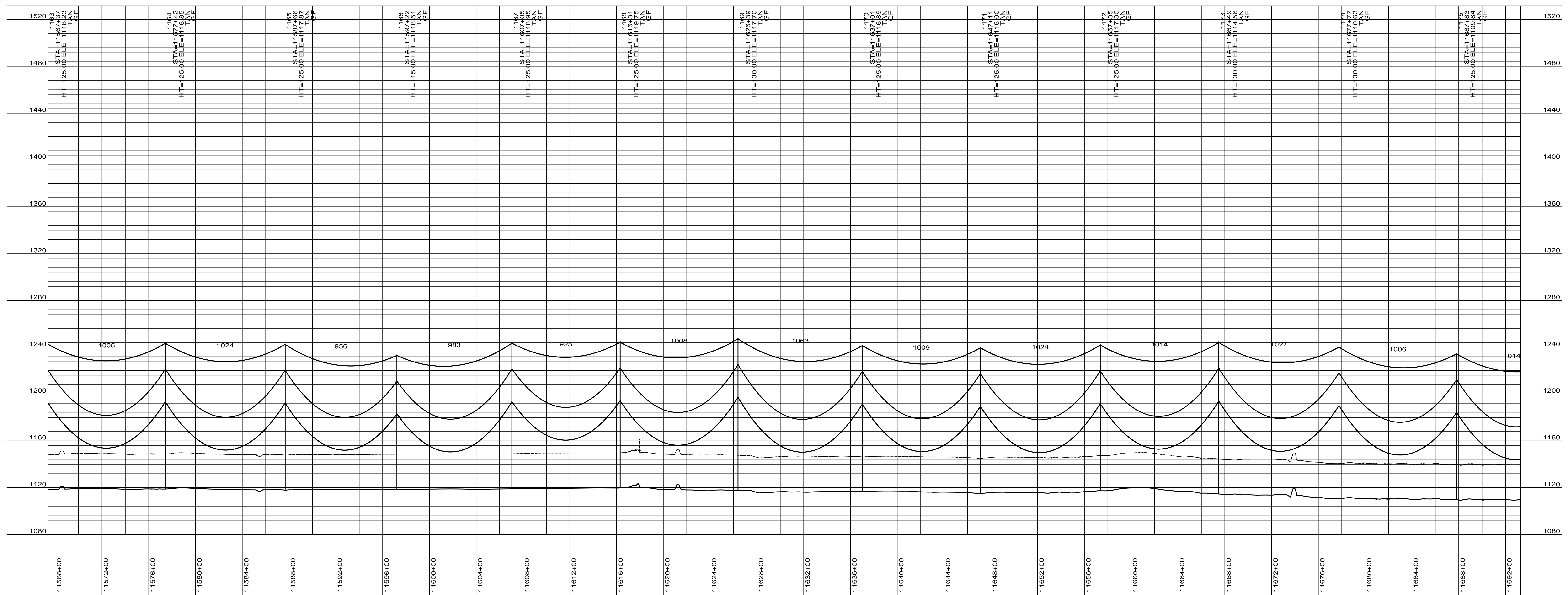
55-PP-GF000-006

PRELIMINARY



32

33



DESIGN CONDITIONS:
 SHIELD _____
 20% RTS @ -20 DEGREES F, INITIAL CLEARANCE LINE: XX'

CONDUCTOR _____
 20% RTS @ -20 DEGREES F, INITIAL CLEARANCE LINE: XX'

REV	DATE	APP	DESCRIPTION	DFTR

8000 S. CHESTER STREET
 SUITE 500
 CENTENNIAL, CO 80112

A STANLEY GROUP COMPANY
 ENGINEERING, ENVIRONMENTAL AND
 CONSTRUCTION SERVICES - WORLDWIDE

DESIGNED XXXXX
 DRAWN XXXXX
 CHECKED XXXXX
 APPROVED XXXXX
 DATE 2/7/2012

Center to Grand Forks Project

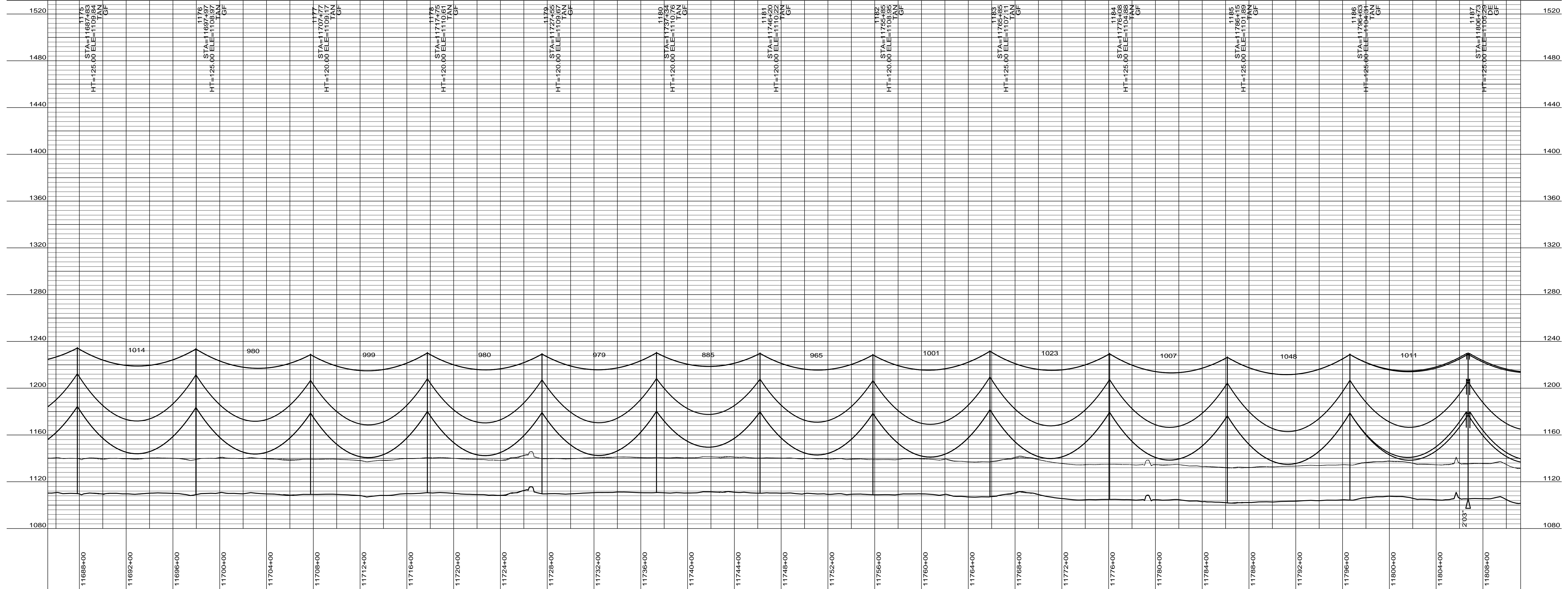
MPC COOPERATIVE, INC.

GRAND FORKS COUNTY

400.0 FT. HORIZ. SCALE
 40.0 FT. VERT. SCALE

55-PP-GF000-007

PRELIMINARY



DESIGN CONDITIONS:
 SHIELD _____
 20% RTS @ -20 DEGREES F, INITIAL CLEARANCE LINE: XX'

CONDUCTOR _____
 20% RTS @ -20 DEGREES F, INITIAL CLEARANCE LINE: XX'

REV	DATE	APP	DESCRIPTION	DFTR

8000 S. CHESTER STREET
 SUITE 500
 CENTENNIAL, CO 80112

A STANLEY GROUP COMPANY
 ENGINEERING, ENVIRONMENTAL AND
 CONSTRUCTION SERVICES - WORLDWIDE

DESIGNED XXXXX
 DRAWN XXXXX
 CHECKED XXXXX
 APPROVED XXXXX
 DATE 2/7/2012

Center to Grand Forks Project

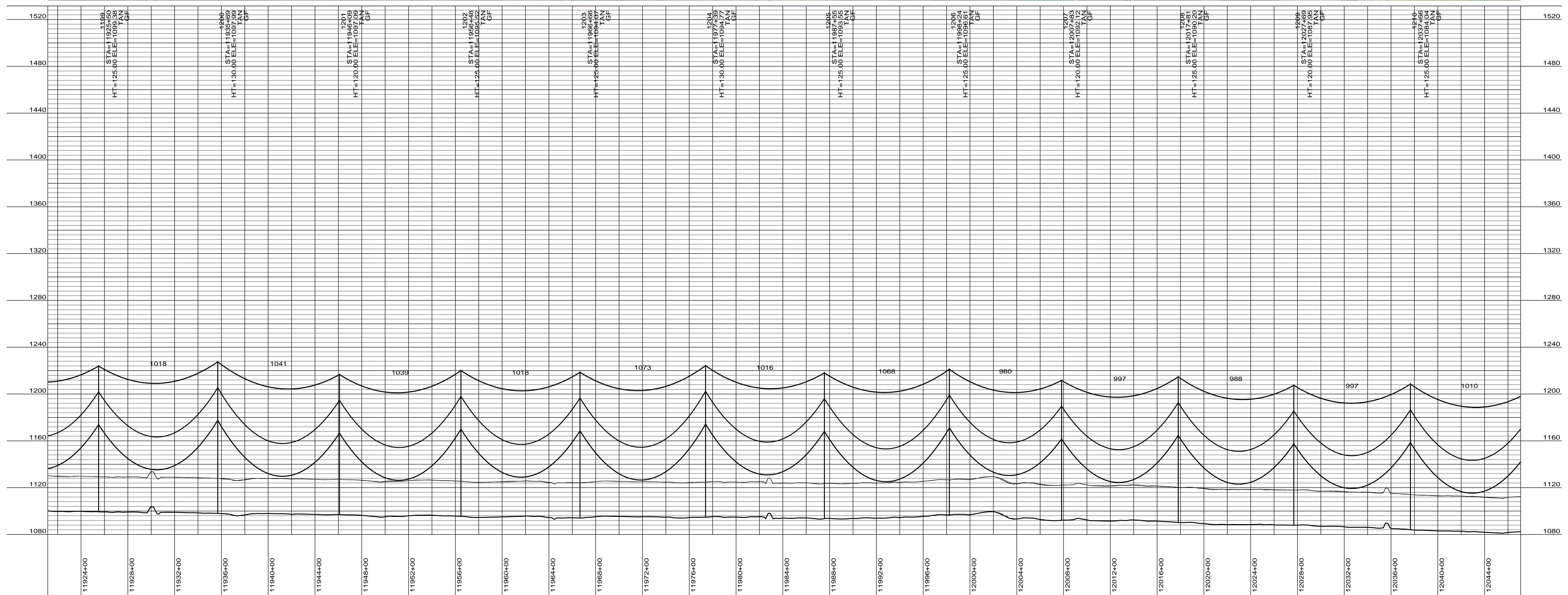
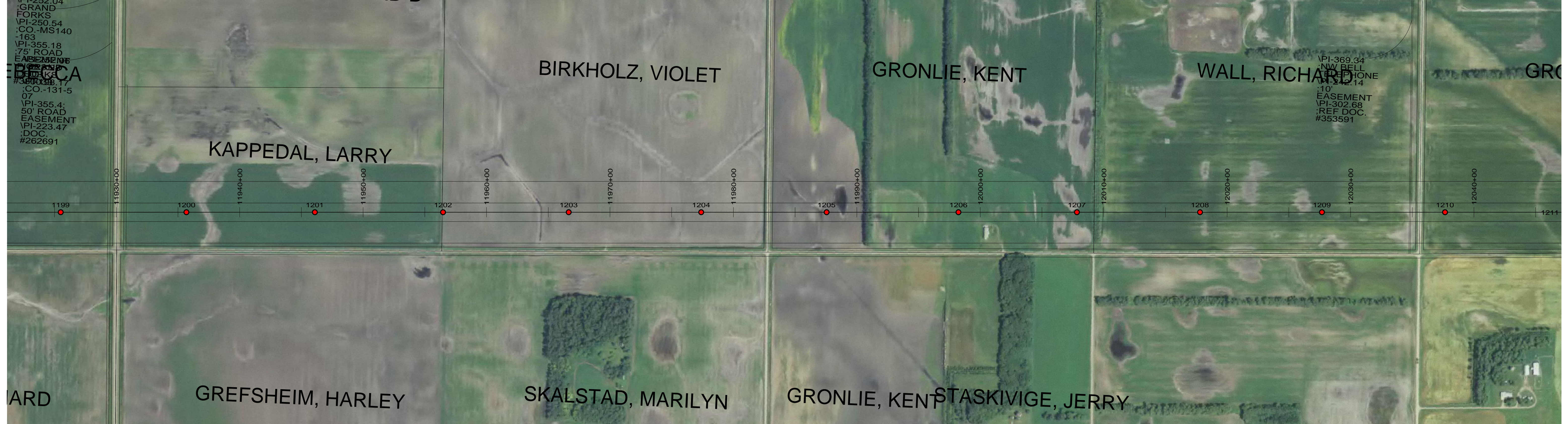
Minnkota Power
 COOPERATIVE, INC.

GRAND FORKS COUNTY

400.0 FT. HORIZ. SCALE
 40.0 FT. VERT. SCALE

55-PP-GF000-008

PRELIMINARY



DESIGN CONDITIONS:
 SHIELD _____
 20% RTS @ -20 DEGREES F, INITIAL CLEARANCE LINE: XX'

CONDUCTOR _____
 20% RTS @ -20 DEGREES F, INITIAL CLEARANCE LINE: XX'

REV	DATE	APP	DESCRIPTION	DFTR

Stanley Consultants INC.
 8000 S. CHESTER STREET
 SUITE 500
 CENTENNIAL, CO 80112

A STANLEY GROUP COMPANY
 ENGINEERING, ENVIRONMENTAL AND
 CONSTRUCTION SERVICES - WORLDWIDE

DESIGNED XXXXX
 DRAWN XXXXX
 CHECKED XXXXX
 APPROVED XXXXX
 DATE 2/7/2012

Center to Grand Forks Project

Minnkota Power
 COOPERATIVE, INC.

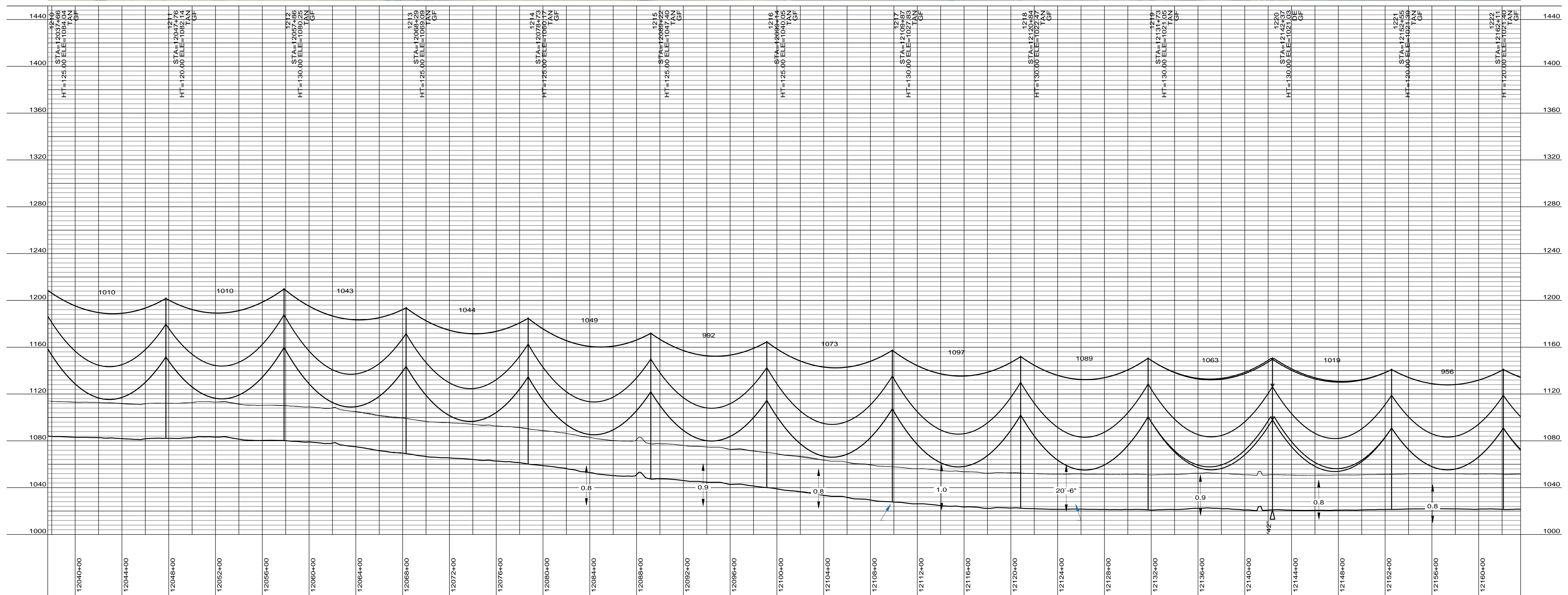
GRAND FORKS COUNTY

400.0 FT. HORIZ. SCALE
 40.0 FT. VERT. SCALE

55-PP-GF000-010

PRELIMINARY

PLS-CADD DRAWING



DESIGN CONDITIONS:
 SHIELD _____
 20% RTS @ -20 DEGREES F, INITIAL CLEARANCE LINE: XX'

CONDUCTOR _____
 20% RTS @ -20 DEGREES F, INITIAL CLEARANCE LINE: XX'

REV	DATE	APP	DESCRIPTION	DFTR

Stanley Consultants INC.
 8000 S. CHESTER STREET
 SUITE 500
 CENTENNIAL, CO 80112

A STANLEY GROUP COMPANY
 ENGINEERING, ENVIRONMENTAL AND
 CONSTRUCTION SERVICES - WORLDWIDE

DESIGNED XXXXX
 DRAWN XXXXX
 CHECKED XXXXX
 APPROVED XXXXX
 DATE 2/7/2012

Center to Grand Forks Project

PRELIMINARY



DESIGN CONDITIONS:
SHIELD
20% RTS @ -20 DEGREES F, INITIAL CLEARANCE LINE: XX'

CONDUCTOR
20% RTS @ -20 DEGREES F, INITIAL CLEARANCE LINE: XX'

REV	DATE	APP	DESCRIPTION	DFTR

8000 S. CHESTER STREET
SUITE 500
CENTENNIAL, CO 80112

A STANLEY GROUP COMPANY
ENGINEERING, ENVIRONMENTAL AND
CONSTRUCTION SERVICES - WORLDWIDE

DESIGNED XXXXX
DRAWN XXXXX
CHECKED XXXXX
APPROVED XXXXX
DATE 2/7/2012

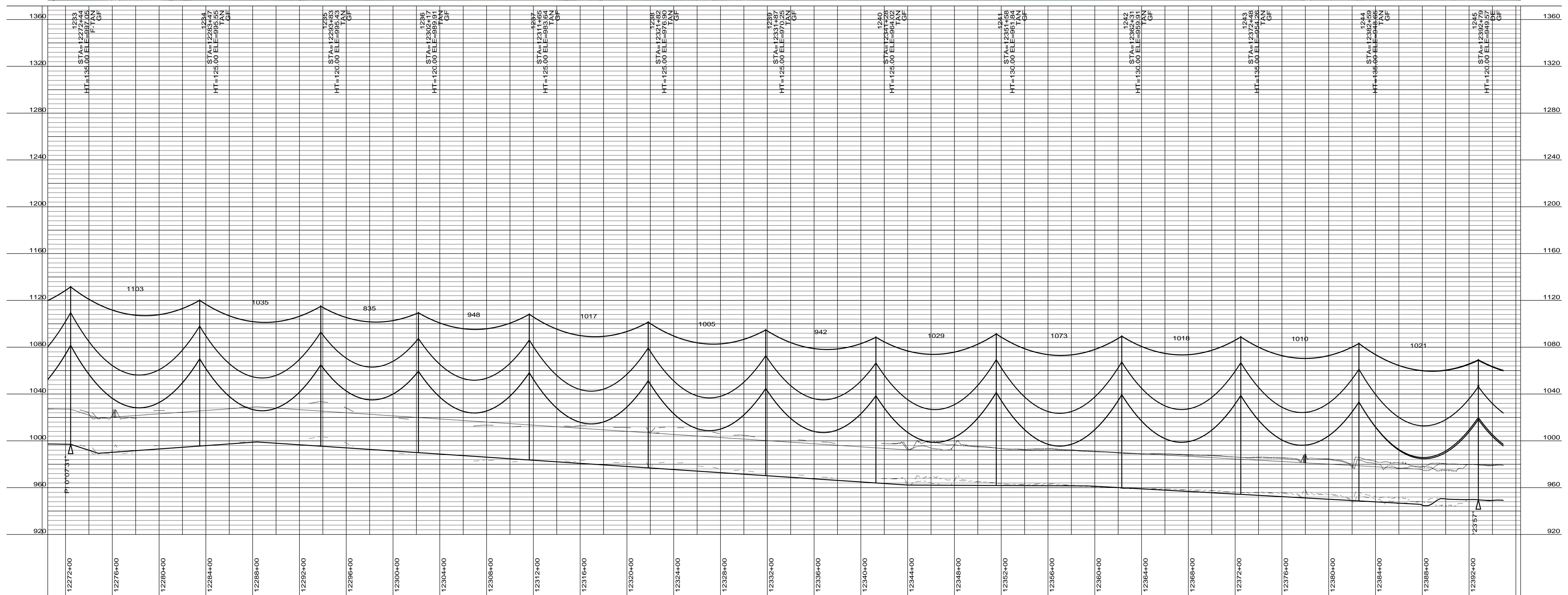
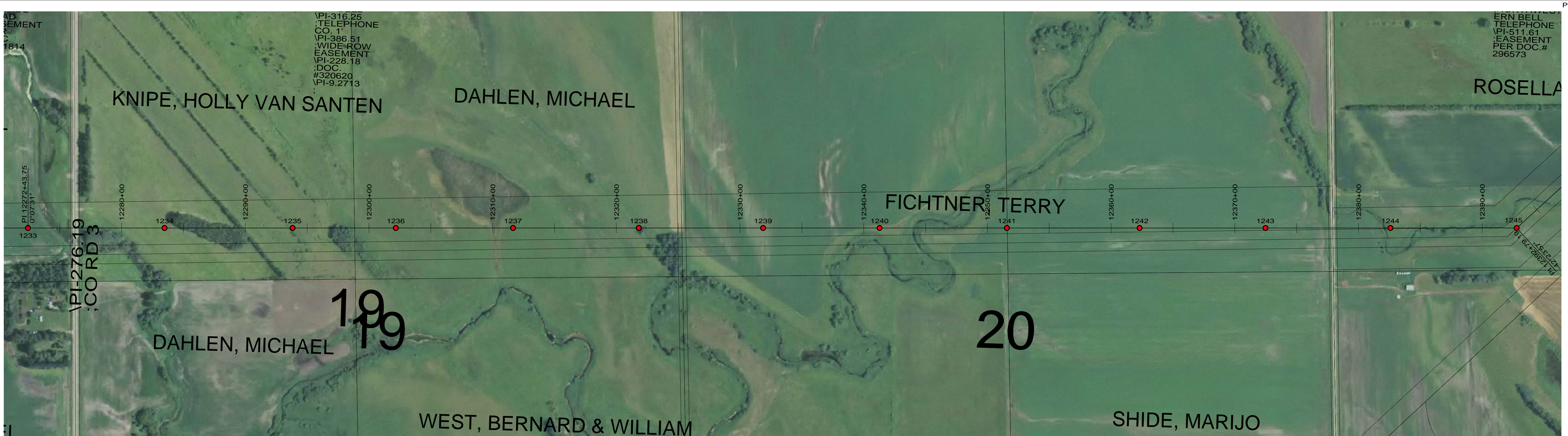
Center to Grand Forks Project

GRAND FORKS COUNTY

400.0 FT. HORIZ. SCALE
40.0 FT. VERT. SCALE

55-PP-GF000-012

PRELIMINARY



DESIGN CONDITIONS:
 SHIELD _____
 20% RTS @ -20 DEGREES F, INITIAL CLEARANCE LINE: XX'

CONDUCTOR _____
 20% RTS @ -20 DEGREES F, INITIAL CLEARANCE LINE: XX'

REV	DATE	APP	DESCRIPTION	DFTR

8000 S. CHESTER STREET
 SUITE 500
 CENTENNIAL, CO 80112

A STANLEY GROUP COMPANY
 ENGINEERING, ENVIRONMENTAL AND
 CONSTRUCTION SERVICES - WORLDWIDE

DESIGNED XXXXX
 DRAWN XXXXX
 CHECKED XXXXX
 APPROVED XXXXX
 DATE 2/7/2012

Center to Grand Forks Project

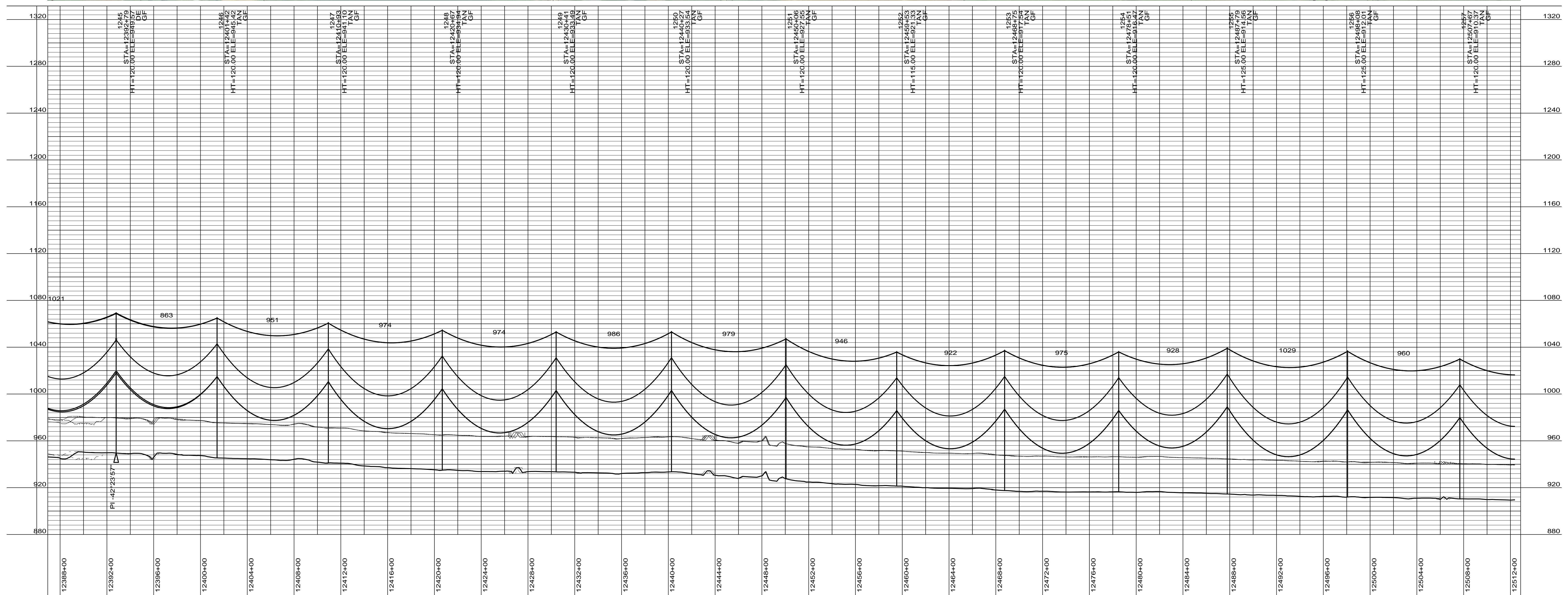
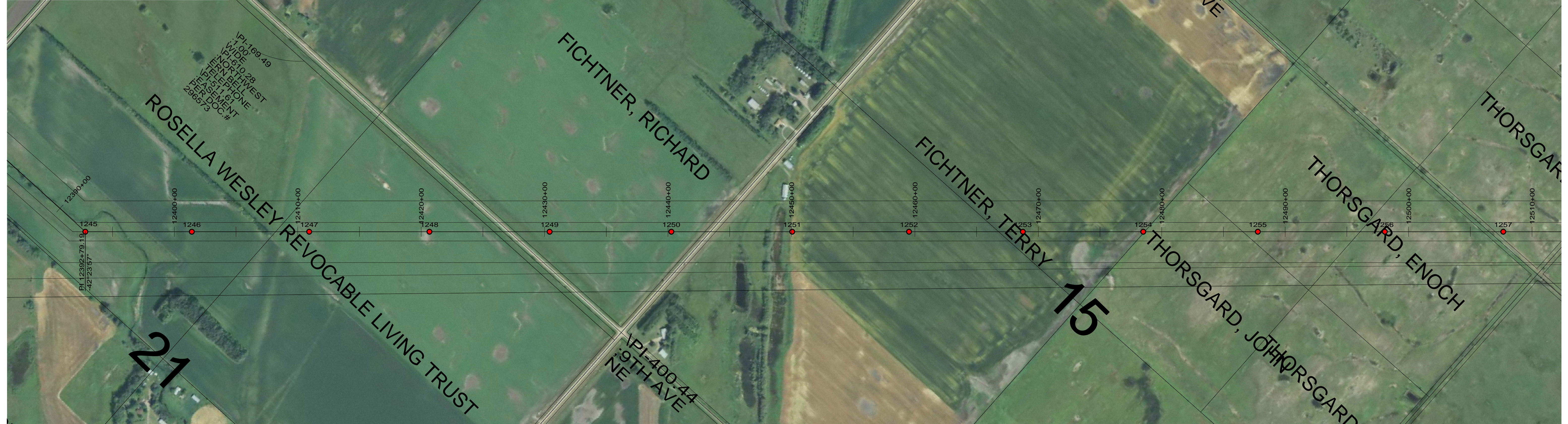
Minnkota Power
 COOPERATIVE, INC.

GRAND FORKS COUNTY

400.0 FT. HORIZ. SCALE
 40.0 FT. VERT. SCALE

55-PP-GF000-013

PRELIMINARY



DESIGN CONDITIONS:
 SHIELD _____
 20% RTS @ -20 DEGREES F, INITIAL CLEARANCE LINE: XX'

CONDUCTOR _____
 20% RTS @ -20 DEGREES F, INITIAL CLEARANCE LINE: XX'

REV	DATE	APP	DESCRIPTION	DFTR



Stanley Consultants INC.
 8000 S. CHESTER STREET
 SUITE 500
 CENTENNIAL, CO 80112

A STANLEY GROUP COMPANY
 ENGINEERING, ENVIRONMENTAL AND
 CONSTRUCTION SERVICES - WORLDWIDE

DESIGNED XXXXX
 DRAWN XXXXX
 CHECKED XXXXX
 APPROVED XXXXX
 DATE 2/7/2012


Center to Grand Forks Project



Minnkota Power
 COOPERATIVE, INC.

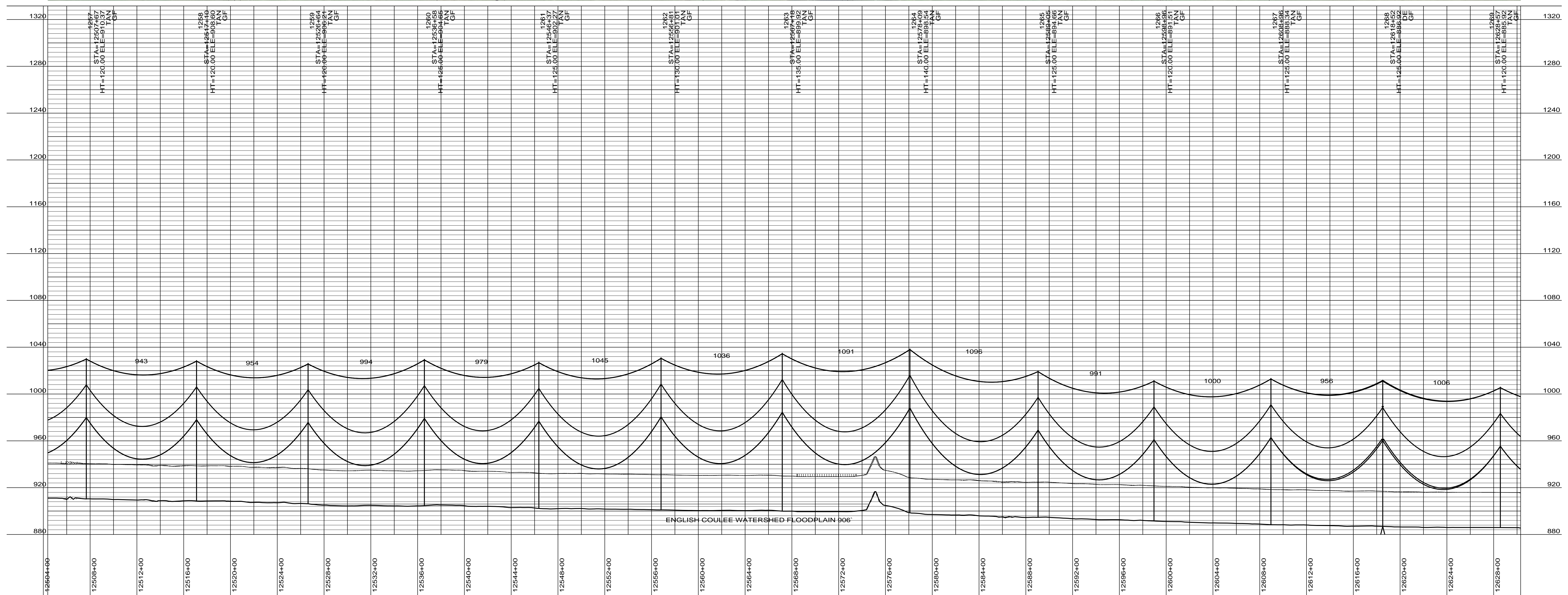
GRAND FORKS COUNTY

400.0 FT. HORIZ. SCALE
 40.0 FT. VERT. SCALE



55-PP-GF000-014

PRELIMINARY



DESIGN CONDITIONS:
 SHIELD
 20% RTS @ -20 DEGREES F, INITIAL CLEARANCE LINE: XX'

CONDUCTOR
 20% RTS @ -20 DEGREES F, INITIAL CLEARANCE LINE: XX'

REV	DATE	APP	DESCRIPTION	DFTR

8000 S. CHESTER STREET
 SUITE 500
 CENTENNIAL, CO 80112

A STANLEY GROUP COMPANY
 ENGINEERING, ENVIRONMENTAL AND
 CONSTRUCTION SERVICES - WORLDWIDE

DESIGNED	XXXXX
DRAWN	XXXXX
CHECKED	XXXXX
APPROVED	XXXXX
APPROVED	
DATE	2/7/2012

Center to Grand Forks Project

MPC COOPERATIVE, INC.

GRAND FORKS COUNTY

400.0 FT. HORIZ. SCALE
 40.0 FT. VERT. SCALE

55-PP-GF000-015

PRELIMINARY



DESIGN CONDITIONS:
 SHIELD _____
 20% RTS @ -20 DEGREES F, INITIAL CLEARANCE LINE: XX'

CONDUCTOR _____
 20% RTS @ -20 DEGREES F, INITIAL CLEARANCE LINE: XX'

REV	DATE	APP	DESCRIPTION	DFTR



Stanley Consultants INC.
 A STANLEY GROUP COMPANY
 ENGINEERING, ENVIRONMENTAL AND CONSTRUCTION SERVICES - WORLDWIDE

8000 S. CHESTER STREET
 SUITE 500
 CENTENNIAL, CO 80112

DESIGNED	XXXXX
DRAWN	XXXXX
CHECKED	XXXXX
APPROVED	XXXXX
DATE	2/7/2012


Center to Grand Forks Project



MPC COOPERATIVE, INC.

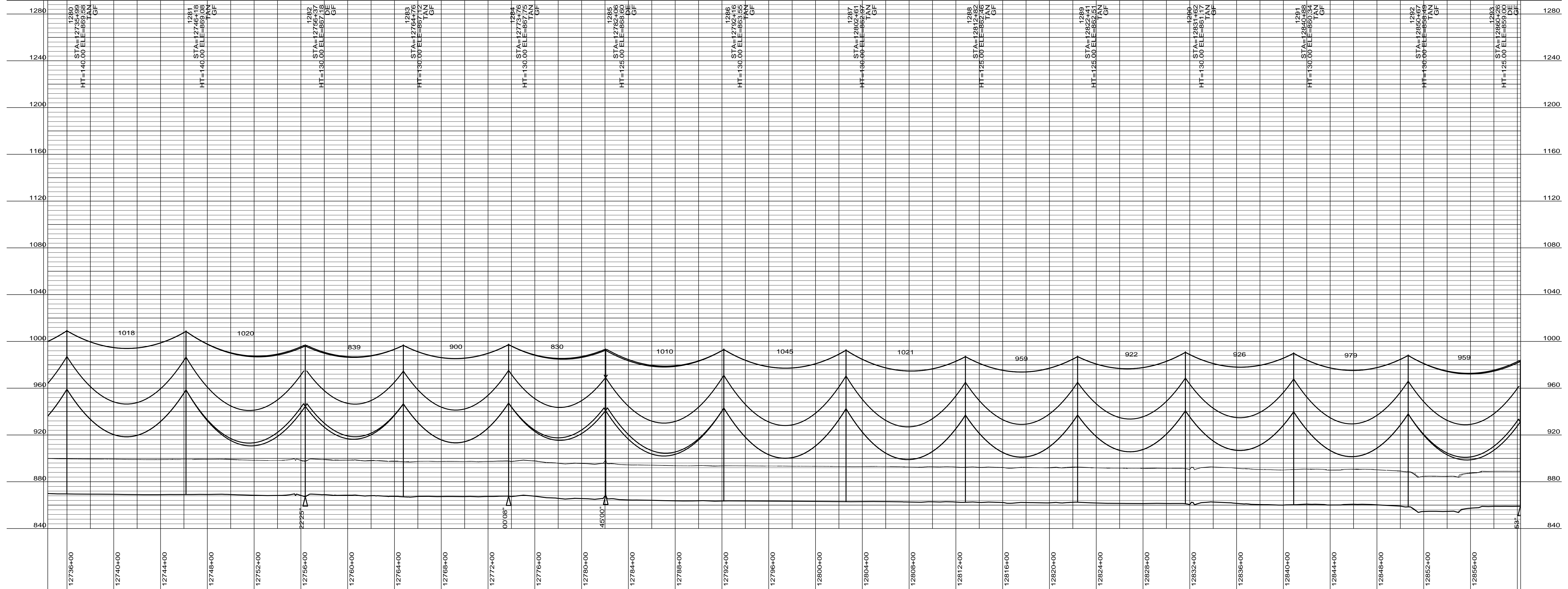
GRAND FORKS COUNTY

400.0 FT. HORIZ. SCALE
 40.0 FT. VERT. SCALE



55-PP-GF000-016

PRELIMINARY



DESIGN CONDITIONS:
 SHIELD _____
 20% RTS @ -20 DEGREES F, INITIAL CLEARANCE LINE: XX

CONDUCTOR _____
 20% RTS @ -20 DEGREES F, INITIAL CLEARANCE LINE: XX

REV	DATE	APP	DESCRIPTION	DFTR



8000 S. CHESTER STREET
 SUITE 500
 CENTENNIAL, CO 80112

A STANLEY GROUP COMPANY
 ENGINEERING, ENVIRONMENTAL AND
 CONSTRUCTION SERVICES - WORLDWIDE

DESIGNED XXXXX
 DRAWN XXXXX
 CHECKED XXXXX
 APPROVED XXXXX
 DATE 2/7/2012

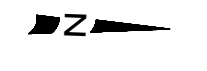
Center to Grand Forks Project



MPC COOPERATIVE, INC.

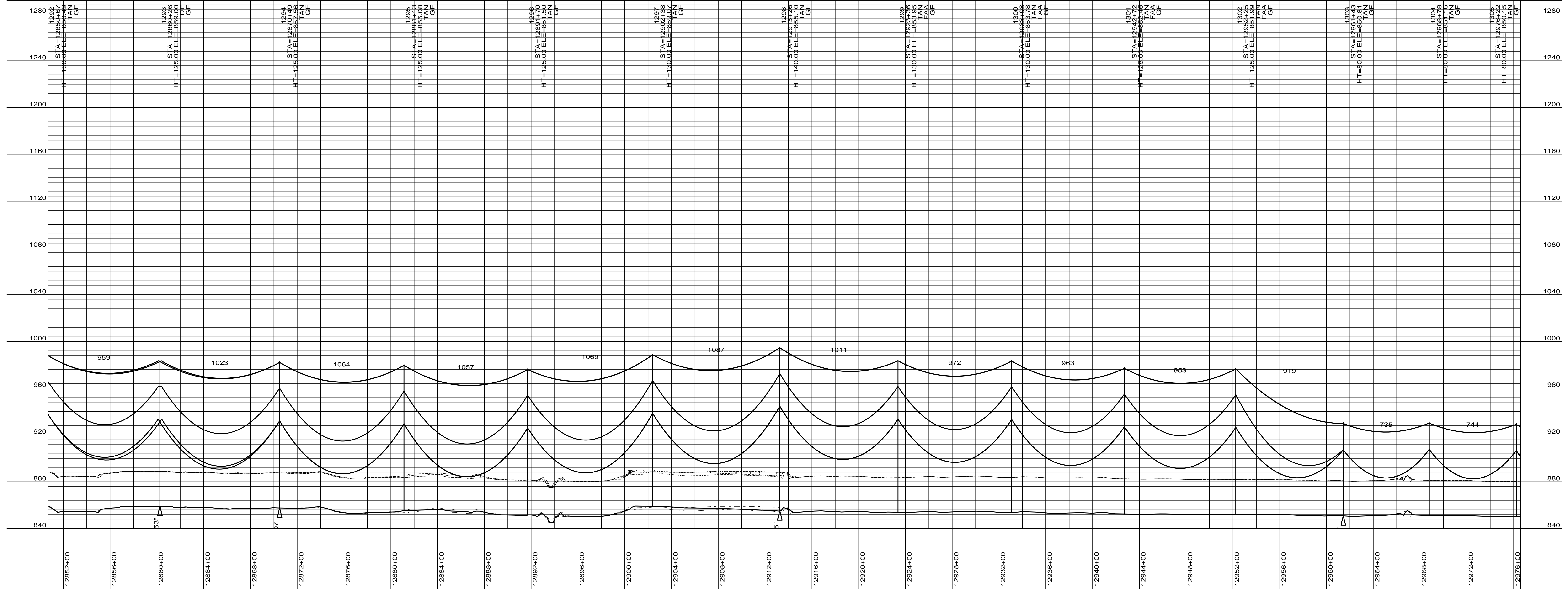
GRAND FORKS COUNTY

400.0 FT. HORIZ. SCALE
 40.0 FT. VERT. SCALE



55-PP-GF000-017

PRELIMINARY



DESIGN CONDITIONS:
 SHIELD _____
 20% RTS @ -20 DEGREES F, INITIAL CLEARANCE LINE: XX

CONDUCTOR _____
 20% RTS @ -20 DEGREES F, INITIAL CLEARANCE LINE: XX

REV	DATE	APP	DESCRIPTION	DFTR



8000 S. CHESTER STREET
 SUITE 500
 CENTENNIAL, CO 80112

A STANLEY GROUP COMPANY
 ENGINEERING, ENVIRONMENTAL AND
 CONSTRUCTION SERVICES - WORLDWIDE

DESIGNED XXXXX
 DRAWN XXXXX
 CHECKED XXXXX
 APPROVED XXXXX
 DATE 2/7/2012


Center to Grand Forks Project



MPC COOPERATIVE, INC.

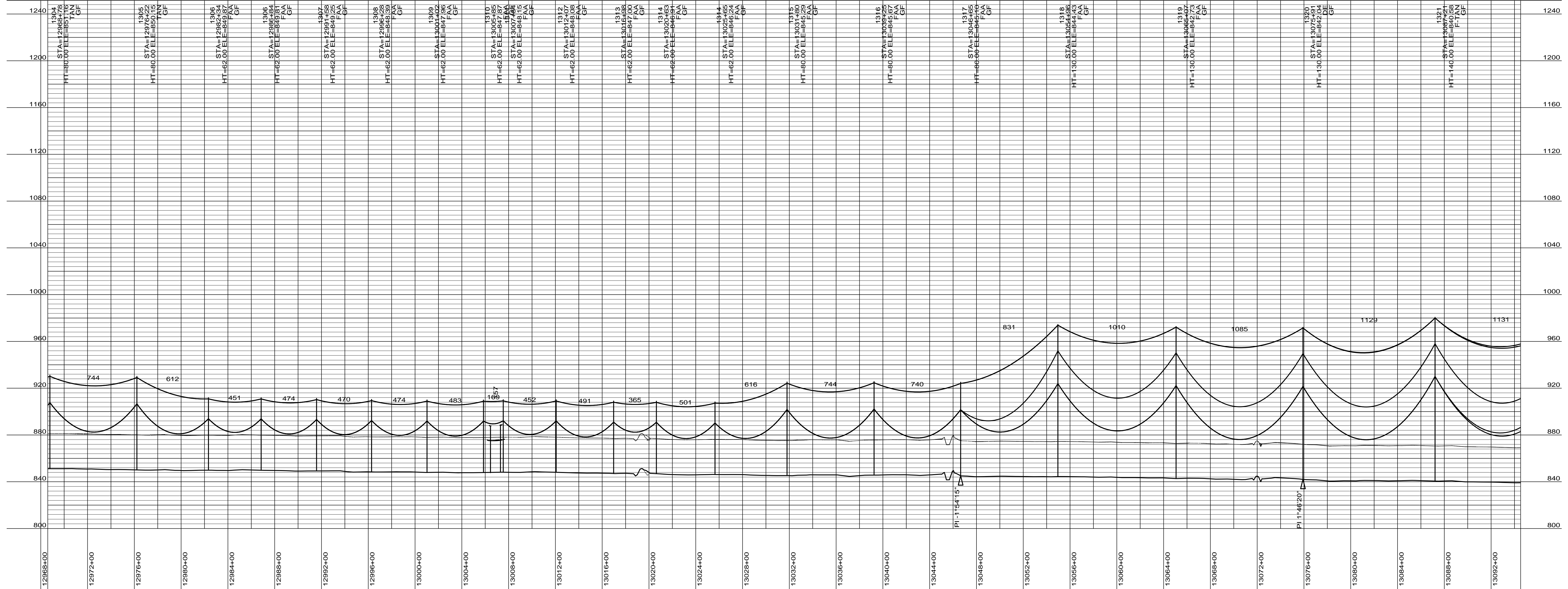
GRAND FORKS COUNTY

400.0 FT. HORIZ. SCALE
 40.0 FT. VERT. SCALE



55-PP-GF000-018

PRELIMINARY



DESIGN CONDITIONS:
 SHIELD 20% RTS @ -20 DEGREES F, INITIAL CLEARANCE LINE: XX'
 CONDUCTOR 20% RTS @ -20 DEGREES F, INITIAL CLEARANCE LINE: XX'

REV	DATE	APP	DESCRIPTION	DFTR



Stanley Consultants INC.
 8000 S. CHESTER STREET
 SUITE 500
 CENTENNIAL, CO 80112

A STANLEY GROUP COMPANY
 ENGINEERING, ENVIRONMENTAL AND
 CONSTRUCTION SERVICES - WORLDWIDE

DESIGNED XXXXX
 DRAWN XXXXX
 CHECKED XXXXX
 APPROVED XXXXX
 APPROVED
 DATE 2/7/2012


Center to Grand Forks Project



Minnkota Power
 COOPERATIVE, INC.

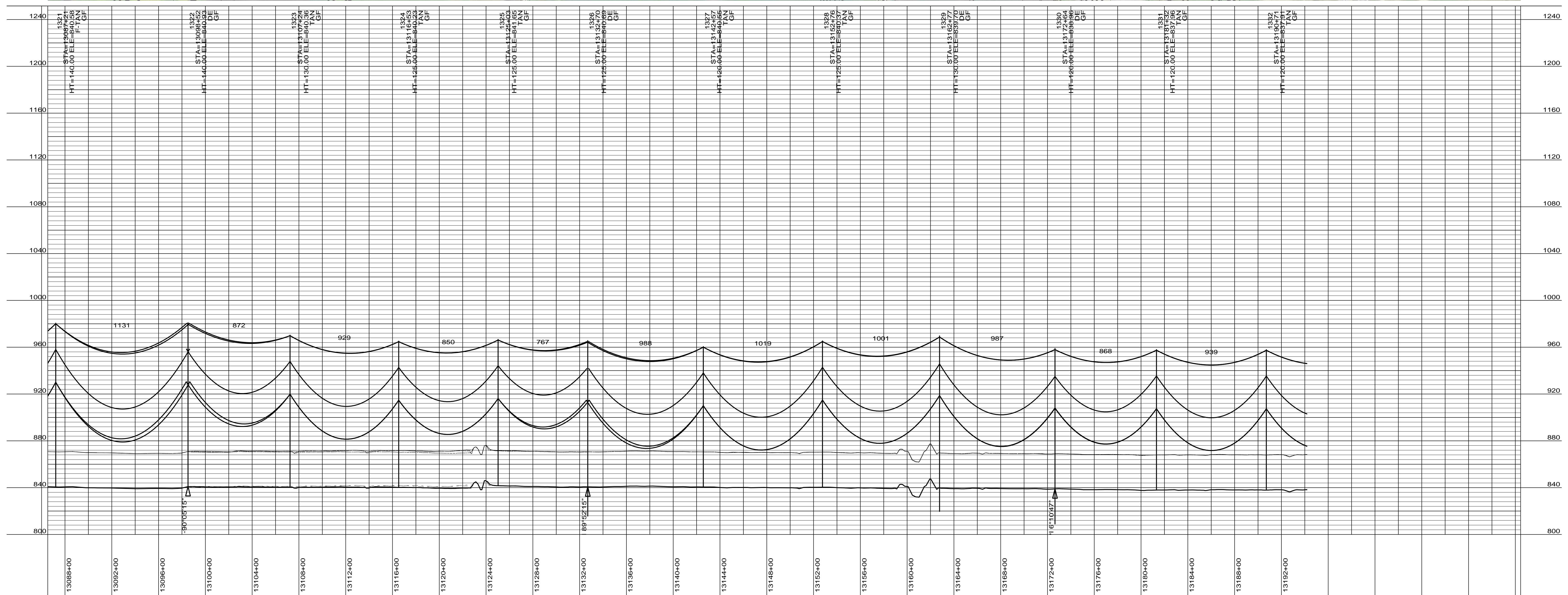
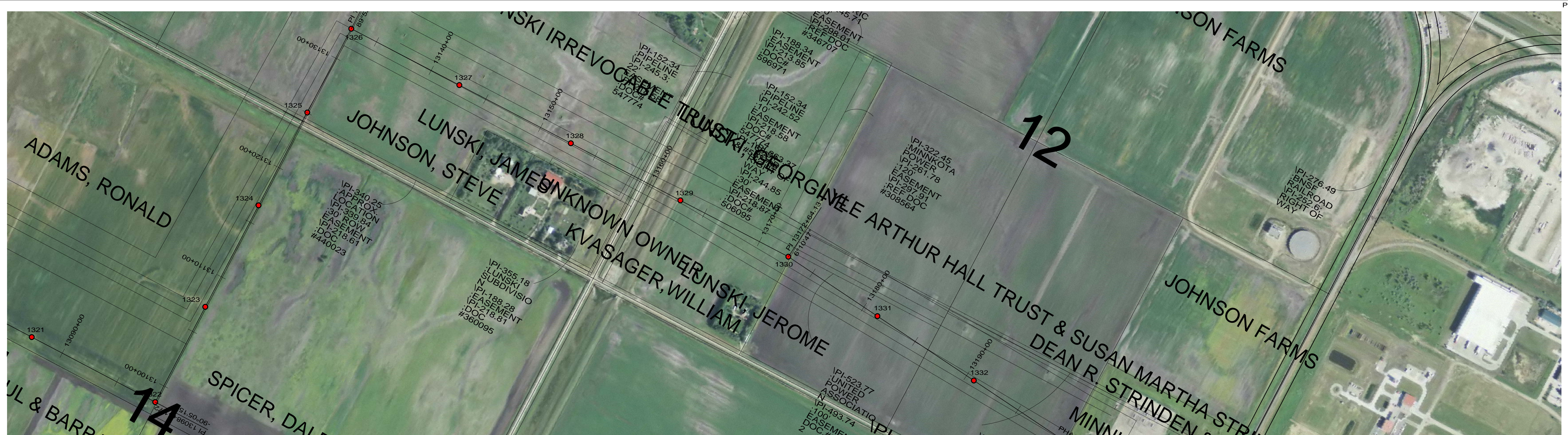
GRAND FORKS COUNTY

400.0 FT. HORIZ. SCALE
 40.0 FT. VERT. SCALE



55-PP-GF000-019

PRELIMINARY



DESIGN CONDITIONS:
 SHIELD _____
 20% RTS @ -20 DEGREES F, INITIAL CLEARANCE LINE: XX'

CONDUCTOR _____
 20% RTS @ -20 DEGREES F, INITIAL CLEARANCE LINE: XX'

REV	DATE	APP	DESCRIPTION	DFTR



Stanley Consultants INC.

8000 S. CHESTER STREET
 SUITE 500
 CENTENNIAL, CO 80112

A STANLEY GROUP COMPANY
 ENGINEERING, ENVIRONMENTAL AND
 CONSTRUCTION SERVICES - WORLDWIDE

DESIGNED	XXXXX
DRAWN	XXXXX
CHECKED	XXXXX
APPROVED	XXXXX
APPROVED DATE	2/7/2012


Center to Grand Forks Project



Minnkota Power
 COOPERATIVE, INC.

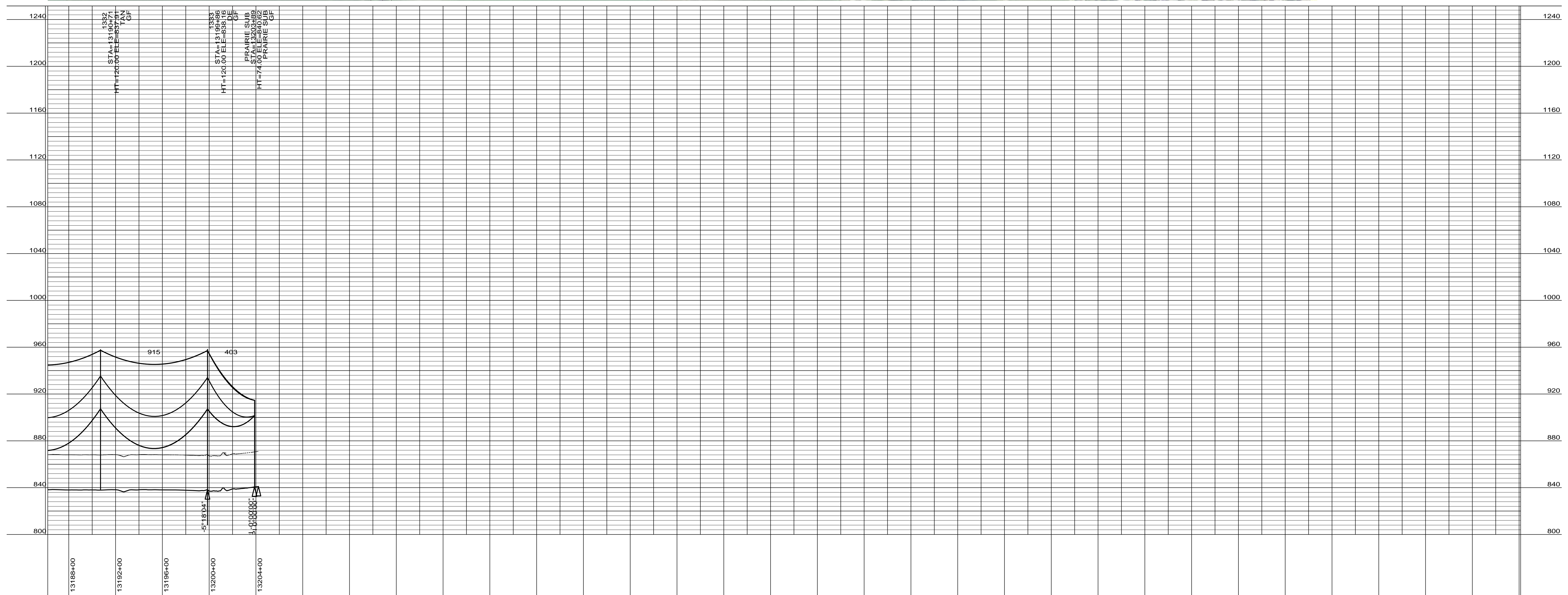
GRAND FORKS COUNTY

400.0 FT. HORIZ. SCALE
 40.0 FT. VERT. SCALE



55-PP-GF000-020

PRELIMINARY




DESIGN CONDITIONS:		CONDUCTOR	
SHIELD		20% RTS @ -20 DEGREES F, INITIAL	
20% RTS @ -20 DEGREES F, INITIAL		CLEARANCE LINE: XX'	
REV	DATE	APP	DESCRIPTION


Stanley Consultants INC.
 8000 S. CHESTER STREET
 SUITE 500
 CENTENNIAL, CO 80112
 A STANLEY GROUP COMPANY
 ENGINEERING, ENVIRONMENTAL AND
 CONSTRUCTION SERVICES - WORLDWIDE

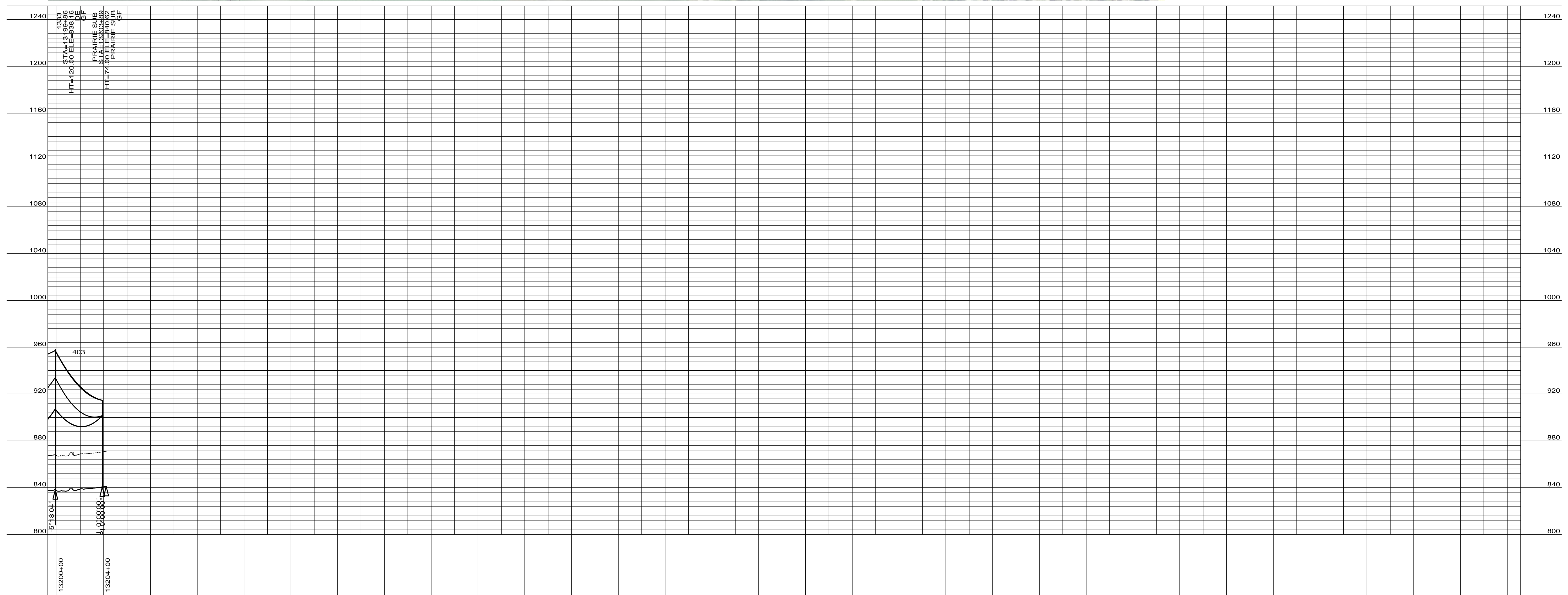
DESIGNED XXXXX
 DRAWN XXXXX
 CHECKED XXXXX
 APPROVED XXXXX
 DATE 2/7/2012

Center to Grand Forks Project

 COOPERATIVE, INC.

GRAND FORKS COUNTY
 400.0 FT. HORIZ. SCALE
 40.0 FT. VERT. SCALE

 55-PP-GF000-021

PRELIMINARY



DESIGN CONDITIONS:
 SHIELD _____
 20% RTS @ -20 DEGREES F, INITIAL CLEARANCE LINE: XX'

CONDUCTOR _____
 20% RTS @ -20 DEGREES F, INITIAL

REV	DATE	APP	DESCRIPTION	DFTR



8000 S. CHESTER STREET
 SUITE 500
 CENTENNIAL, CO 80112

A STANLEY GROUP COMPANY
 ENGINEERING, ENVIRONMENTAL AND
 CONSTRUCTION SERVICES - WORLDWIDE

DESIGNED _____
 DRAWN _____
 CHECKED _____
 APPROVED _____
 DATE 2/7/2012


Center to Grand Forks Project



MPC COOPERATIVE, INC.

GRAND FORKS COUNTY

400.0 FT. HORIZ. SCALE
 40.0 FT. VERT. SCALE



55-PP-GF000-022

