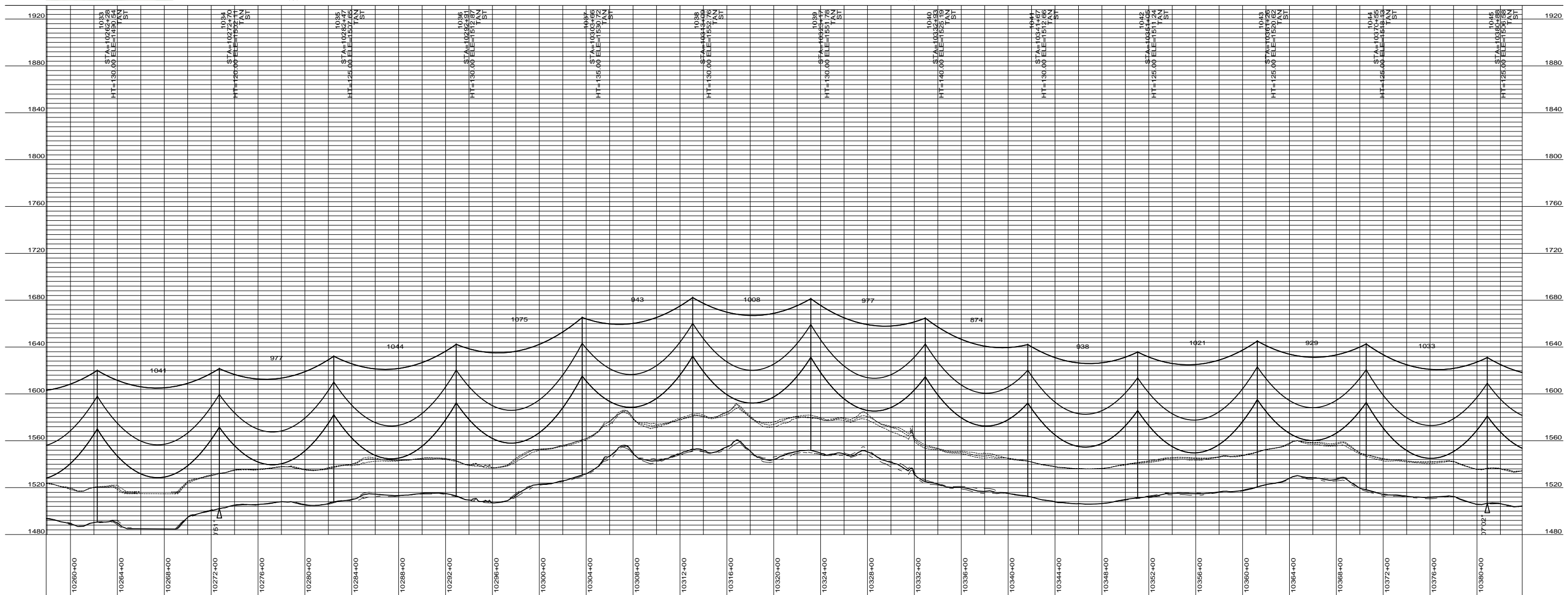
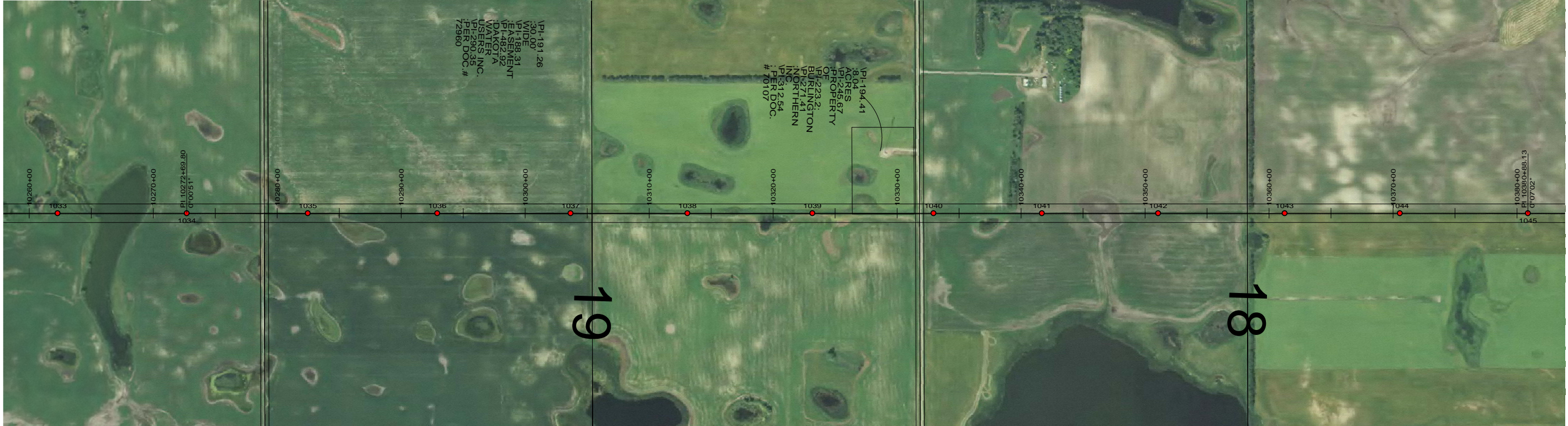


PRELIMINARY



DESIGN CONDITIONS:
 SHIELD _____
 20% RTS @ -20 DEGREES F, INITIAL CLEARANCE LINE: XX'
 CONDUCTOR _____
 20% RTS @ -20 DEGREES F, INITIAL

REV	DATE	APP	DESCRIPTION	DFTR



Stanley Consultants INC.

8000 S. CHESTER STREET
 SUITE 500
 CENTENNIAL, CO 80112

A STANLEY GROUP COMPANY
 ENGINEERING, ENVIRONMENTAL AND
 CONSTRUCTION SERVICES - WORLDWIDE

DESIGNED	XXXXX
DRAWN	XXXXX
CHECKED	XXXXX
APPROVED	XXXXX
APPROVED	
DATE	2/7/2012


Center to Grand Forks Project



Minnkota Power
 COOPERATIVE, INC.

STEELE COUNTY

400.0 FT. HORIZ. SCALE
 40.0 FT. VERT. SCALE



55-PP-ST000-002

