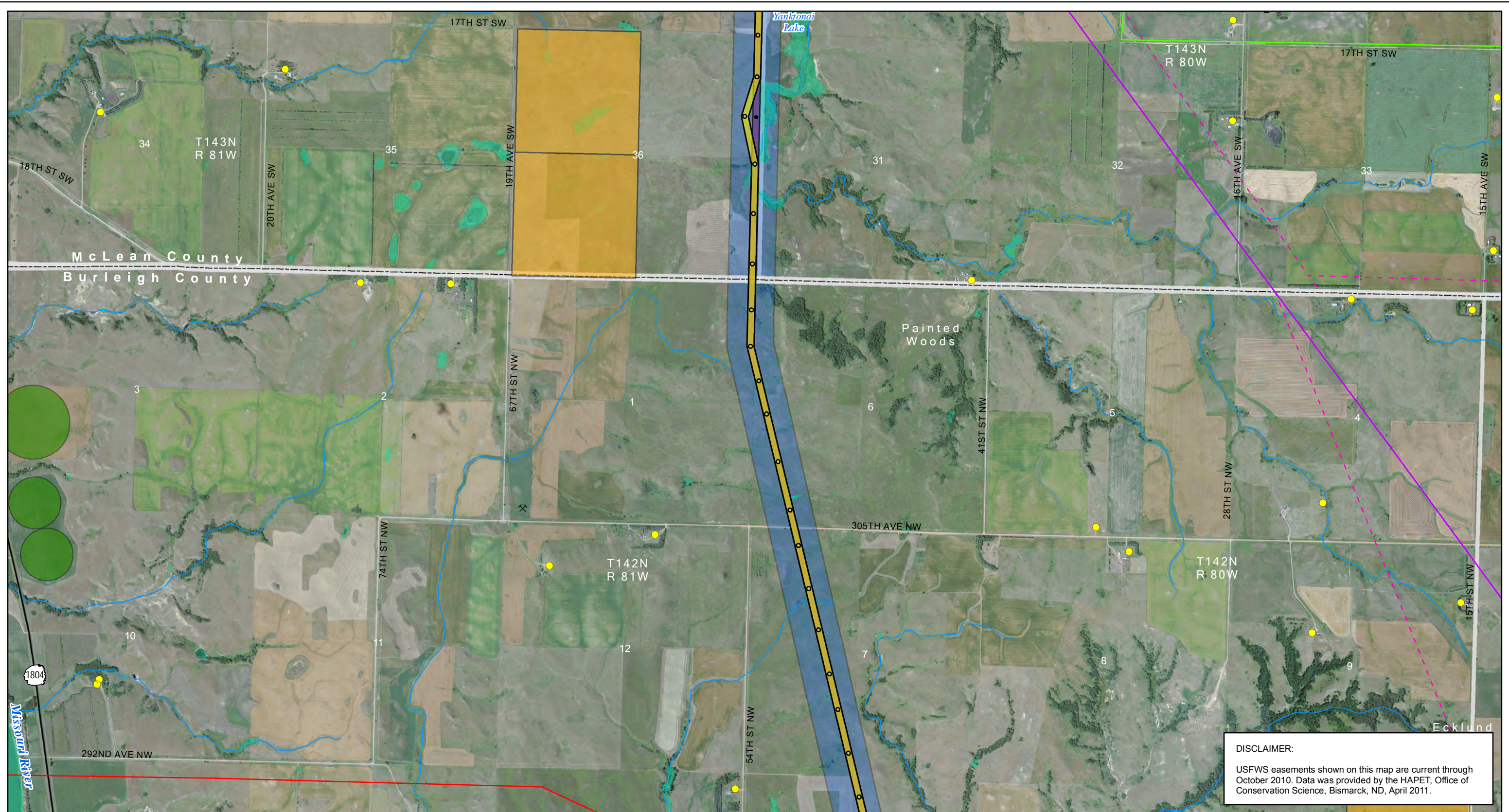
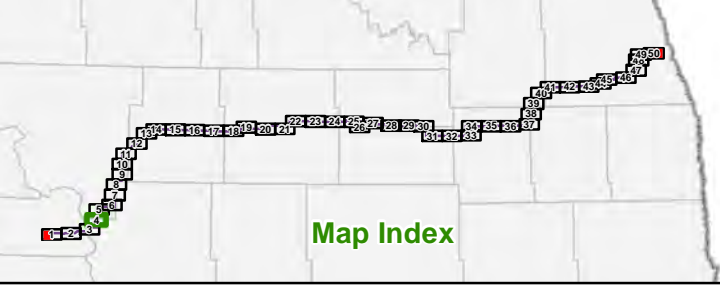


Date: 1/19/2012  
 Path: \\mspc-sis-fs1\GIS\Projects\Minnkota\110900\map\_docs\PS\Routes\Jan13\2012\ndata\CCF\BPA\_02\_11x17L\_50p\_RouteSitingCriteria.mxd



**DISCLAIMER:**  
 USFWS easements shown on this map are current through October 2010. Data was provided by the HAPET, Office of Conservation Science, Bismarck, ND, April 2011.



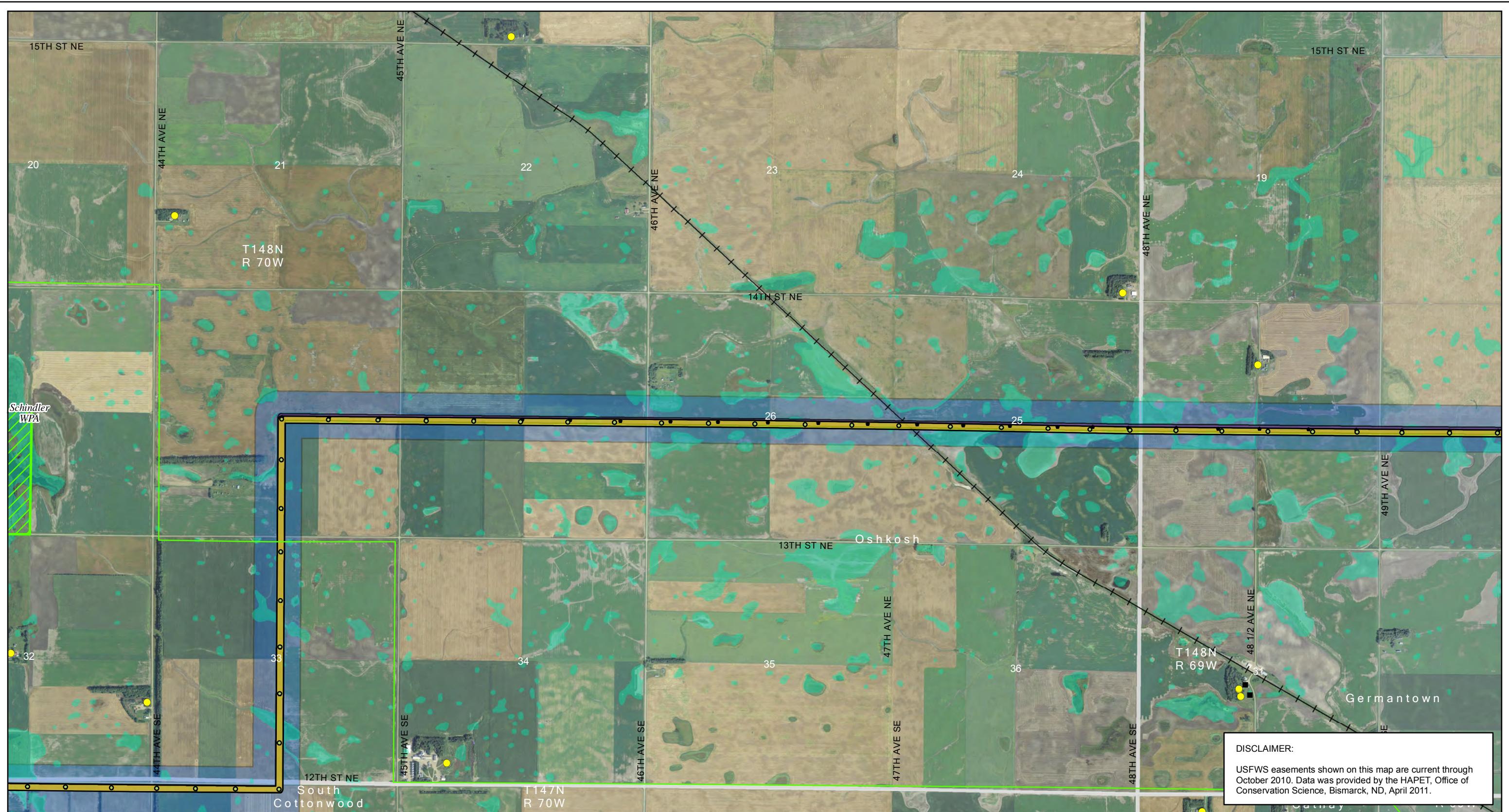
- |  |  |   |   |  |  |
|--|--|---|---|--|--|
| <ul style="list-style-type: none"> <li><span style="display: inline-block; width: 15px; height: 10px; background-color: purple; border: 1px solid black;"></span> Project ROW - Nov. 11, 2011</li> <li><span style="display: inline-block; width: 15px; height: 10px; background-color: yellow; border: 1px solid black;"></span> Project ROW - Jan. 13, 2012</li> <li><span style="display: inline-block; width: 10px; height: 10px; background-color: black; border-radius: 50%;"></span> Project Structure - Nov. 11, 2011</li> <li><span style="display: inline-block; width: 10px; height: 10px; background-color: black; border-radius: 50%;"></span> Project Structure - Jan. 13, 2012</li> <li><span style="display: inline-block; width: 15px; height: 10px; background-color: lightblue; border: 1px solid blue;"></span> Proposed Modified Corridor - Nov. 18, 2011</li> <li><span style="display: inline-block; width: 15px; height: 10px; background-color: lightblue; border: 1px solid blue; border-style: dashed;"></span> Proposed Modified Corridor Change - Jan. 13, 2012</li> <li><span style="display: inline-block; width: 10px; height: 10px; background-color: lightblue; border-radius: 50%;"></span> Fiber Optic Regeneration Station</li> </ul> | <ul style="list-style-type: none"> <li><span style="display: inline-block; width: 15px; height: 10px; border: 2px solid orange;"></span> Laydown Area</li> <li><span style="display: inline-block; width: 10px; height: 10px; background-color: orange; border-radius: 50%;"></span> Substation</li> <li>Existing Transmission Lines           <ul style="list-style-type: none"> <li><span style="display: inline-block; width: 15px; border-bottom: 2px solid orange;"></span> 400-kV DC</li> <li><span style="display: inline-block; width: 15px; border-bottom: 2px solid red;"></span> 345-kV AC</li> <li><span style="display: inline-block; width: 15px; border-bottom: 2px solid green;"></span> 250-kV DC</li> <li><span style="display: inline-block; width: 15px; border-bottom: 2px solid purple;"></span> 230-kV AC</li> <li><span style="display: inline-block; width: 15px; border-bottom: 2px solid green;"></span> 115-kV or less AC</li> </ul> </li> </ul> | <ul style="list-style-type: none"> <li><span style="display: inline-block; width: 15px; border-bottom: 1px dashed magenta;"></span> Gas or Oil Pipeline</li> <li><span style="display: inline-block; width: 10px; height: 10px; background-color: red; border-radius: 50%;"></span> Occupiable Home within 500 ft of Transmission Facility</li> <li><span style="display: inline-block; width: 10px; height: 10px; background-color: orange; border-radius: 50%;"></span> Not Occupiable Home within 500 ft of Transmission Facility</li> <li><span style="display: inline-block; width: 10px; height: 10px; background-color: yellow; border-radius: 50%;"></span> Occupiable Home beyond 500 ft of Transmission Facility</li> <li><span style="display: inline-block; width: 10px; height: 10px; background-color: black; border-radius: 50%;"></span> School</li> <li><span style="display: inline-block; width: 10px; height: 10px; background-color: black; border-radius: 50%;"></span> Business</li> </ul> | <ul style="list-style-type: none"> <li><span style="display: inline-block; width: 10px; height: 10px; border: 1px dashed black; border-style: dotted;"></span> Gravel Pit or Mine</li> <li><span style="display: inline-block; width: 10px; height: 10px; background-color: brown; border-radius: 50%;"></span> Dump or Landfill</li> <li><span style="display: inline-block; width: 10px; height: 10px; background-color: green; border-radius: 50%;"></span> Irrigated Land</li> <li><span style="display: inline-block; width: 10px; height: 10px; background-color: blue; border-radius: 50%;"></span> Public Airport</li> <li><span style="display: inline-block; width: 10px; height: 10px; background-color: lightblue; border-radius: 50%;"></span> Private Airport</li> <li><span style="display: inline-block; width: 10px; height: 10px; border: 1px solid black; border-style: dashed;"></span> Incorporated Area</li> <li><span style="display: inline-block; width: 10px; height: 10px; border-bottom: 1px solid black;"></span> In-Use Railroad</li> </ul> | <ul style="list-style-type: none"> <li><span style="display: inline-block; width: 15px; height: 10px; background-color: orange; border: 1px solid orange;"></span> State Park, Recreation Area or WMA</li> <li><span style="display: inline-block; width: 15px; height: 10px; background-color: green; border: 1px solid green;"></span> USFWS WPA or WDA</li> <li><span style="display: inline-block; width: 15px; height: 10px; background-color: purple; border: 1px solid purple;"></span> USFWS NWR</li> <li><span style="display: inline-block; width: 15px; height: 10px; background-color: yellow; border: 1px solid yellow;"></span> USBOR Land</li> <li><span style="display: inline-block; width: 15px; height: 10px; background-color: pink; border: 1px solid pink;"></span> TNC Preserve</li> <li><span style="display: inline-block; width: 15px; height: 10px; background-color: orange; border: 1px solid orange;"></span> State Trust Land</li> <li><span style="display: inline-block; width: 15px; height: 10px; background-color: lightblue; border: 1px solid lightblue;"></span> 100-year Floodplain</li> </ul> | <ul style="list-style-type: none"> <li><span style="display: inline-block; width: 15px; height: 10px; background-color: lightblue; border: 1px solid lightblue;"></span> Wetland</li> <li><span style="display: inline-block; width: 15px; height: 10px; background-color: blue; border: 1px solid blue;"></span> USGS Mapped Waterway</li> <li><span style="display: inline-block; width: 15px; height: 10px; background-color: lightgreen; border: 1px solid lightgreen;"></span> USFWS Grassland Easement</li> <li><span style="display: inline-block; width: 15px; height: 10px; background-color: yellow; border: 1px solid yellow;"></span> USFWS Wetland Easement</li> <li><span style="display: inline-block; width: 15px; height: 10px; background-color: red; border: 1px solid red;"></span> USFWS Conservation Easement</li> </ul> |
|--|--|---|---|--|--|

**Figure 2: Page 4 of 50**  
**Route Siting Criteria**  
 Center to Grand Forks Project  
 Minnkota Power Cooperative, Inc.

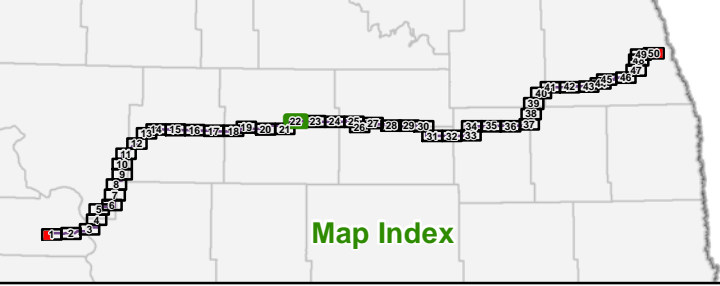
0 2,000 4,000 Feet  
 Scale 1:24,000

Aerial photography published by National Agriculture Imagery Program (NAIP), 2009.

Date: 1/19/2012  
 Path: \\msae-cis-fila\GIS\Projects\Minnkota\110900\map\_docs\PS\RouteSitingCriteria.mxd



**DISCLAIMER:**  
 USFWS easements shown on this map are current through October 2010. Data was provided by the HAPET, Office of Conservation Science, Bismarck, ND, April 2011.



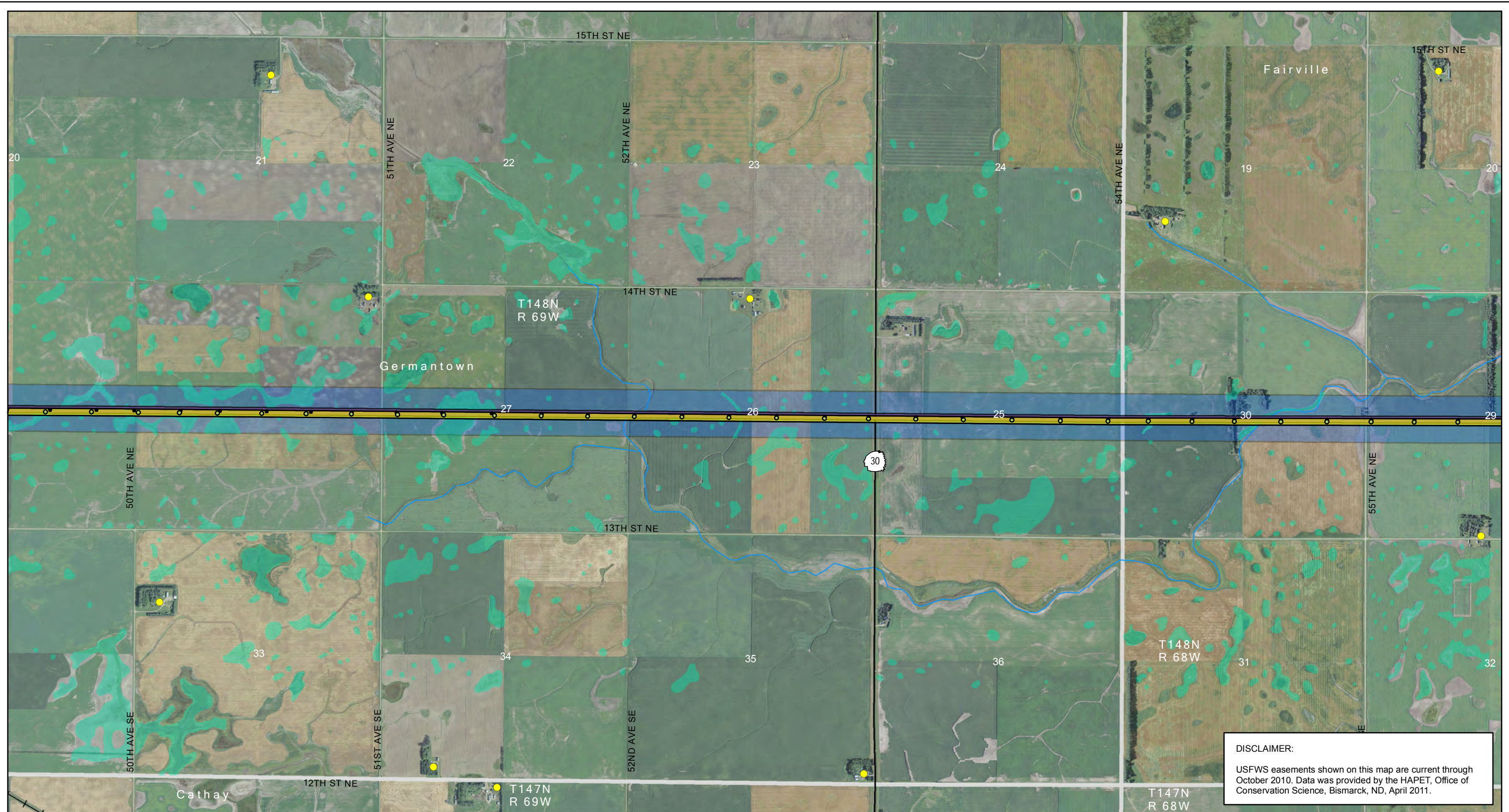
- |   |   |  |  |   |  |
|---|---|--|--|---|--|
| <ul style="list-style-type: none"> <li><span style="display: inline-block; width: 15px; height: 10px; background-color: purple; border: 1px solid black;"></span> Project ROW - Nov. 11, 2011</li> <li><span style="display: inline-block; width: 15px; height: 10px; background-color: yellow; border: 1px solid black;"></span> Project ROW - Jan. 13, 2012</li> <li><span style="display: inline-block; width: 10px; height: 10px; background-color: black; border: 1px solid black;"></span> Project Structure - Nov. 11, 2011</li> <li><span style="display: inline-block; width: 10px; height: 10px; background-color: black; border: 1px solid black;"></span> Project Structure - Jan. 13, 2012</li> <li><span style="display: inline-block; width: 15px; height: 10px; background-color: lightblue; border: 1px solid black;"></span> Proposed Modified Corridor - Nov. 18, 2011</li> <li><span style="display: inline-block; width: 15px; height: 10px; background-color: lightblue; border: 1px solid black; border-style: dashed;"></span> Proposed Modified Corridor Change - Jan. 13, 2012</li> <li><span style="display: inline-block; width: 10px; height: 10px; background-color: lightblue; border: 1px solid black; border-radius: 50%;"></span> Fiber Optic Regeneration Station</li> </ul> | <ul style="list-style-type: none"> <li><span style="display: inline-block; width: 15px; height: 10px; border: 2px solid orange;"></span> Laydown Area</li> <li><span style="display: inline-block; width: 10px; height: 10px; background-color: orange; border: 1px solid black;"></span> Substation</li> <li>Existing Transmission Lines           <ul style="list-style-type: none"> <li><span style="display: inline-block; width: 15px; border-bottom: 2px solid orange;"></span> 400-kV DC</li> <li><span style="display: inline-block; width: 15px; border-bottom: 2px solid red;"></span> 345-kV AC</li> <li><span style="display: inline-block; width: 15px; border-bottom: 2px solid green;"></span> 250-kV DC</li> <li><span style="display: inline-block; width: 15px; border-bottom: 2px solid purple;"></span> 230-kV AC</li> <li><span style="display: inline-block; width: 15px; border-bottom: 2px solid green;"></span> 115-kV or less AC</li> </ul> </li> </ul> | <ul style="list-style-type: none"> <li><span style="display: inline-block; width: 15px; border-bottom: 1px dashed magenta;"></span> Gas or Oil Pipeline</li> <li><span style="display: inline-block; width: 10px; height: 10px; background-color: red; border: 1px solid black; border-radius: 50%;"></span> Occupiable Home within 500 ft of Transmission Facility</li> <li><span style="display: inline-block; width: 10px; height: 10px; background-color: orange; border: 1px solid black; border-radius: 50%;"></span> Not Occupiable Home within 500 ft of Transmission Facility</li> <li><span style="display: inline-block; width: 10px; height: 10px; background-color: yellow; border: 1px solid black; border-radius: 50%;"></span> Occupiable Home beyond 500 ft of Transmission Facility</li> <li><span style="display: inline-block; width: 10px; height: 10px; background-color: black; border: 1px solid black; border-radius: 50%;"></span> School</li> <li><span style="display: inline-block; width: 10px; height: 10px; background-color: black; border: 1px solid black; border-radius: 50%;"></span> Business</li> </ul> | <ul style="list-style-type: none"> <li><span style="display: inline-block; width: 10px; height: 10px; border: 1px dashed black;"></span> Gravel Pit or Mine</li> <li><span style="display: inline-block; width: 10px; height: 10px; background-color: brown; border: 1px solid black;"></span> Dump or Landfill</li> <li><span style="display: inline-block; width: 10px; height: 10px; background-color: green; border: 1px solid black;"></span> Irrigated Land</li> <li><span style="display: inline-block; width: 10px; height: 10px; background-color: blue; border: 1px solid black;"></span> Public Airport</li> <li><span style="display: inline-block; width: 10px; height: 10px; background-color: lightblue; border: 1px solid black;"></span> Private Airport</li> <li><span style="display: inline-block; width: 10px; height: 10px; border: 1px solid black;"></span> Incorporated Area</li> <li><span style="display: inline-block; width: 10px; height: 10px; border: 1px solid black; border-style: dashed;"></span> In-Use Railroad</li> </ul> | <ul style="list-style-type: none"> <li><span style="display: inline-block; width: 15px; height: 10px; background-color: orange; border: 1px solid black;"></span> State Park, Recreation Area or WMA</li> <li><span style="display: inline-block; width: 15px; height: 10px; background-color: green; border: 1px solid black;"></span> USFWS WPA or WDA</li> <li><span style="display: inline-block; width: 15px; height: 10px; background-color: purple; border: 1px solid black;"></span> USFWS NWR</li> <li><span style="display: inline-block; width: 15px; height: 10px; background-color: yellow; border: 1px solid black;"></span> USBOR Land</li> <li><span style="display: inline-block; width: 15px; height: 10px; background-color: pink; border: 1px solid black;"></span> TNC Preserve</li> <li><span style="display: inline-block; width: 15px; height: 10px; background-color: orange; border: 1px solid black;"></span> State Trust Land</li> <li><span style="display: inline-block; width: 15px; height: 10px; background-color: lightblue; border: 1px solid black;"></span> 100-year Floodplain</li> </ul> | <ul style="list-style-type: none"> <li><span style="display: inline-block; width: 15px; height: 10px; background-color: cyan; border: 1px solid black;"></span> Wetland</li> <li><span style="display: inline-block; width: 15px; height: 10px; background-color: blue; border: 1px solid black;"></span> USGS Mapped Waterway</li> <li><span style="display: inline-block; width: 15px; height: 10px; background-color: lightgreen; border: 1px solid black;"></span> USFWS Grassland Easement</li> <li><span style="display: inline-block; width: 15px; height: 10px; background-color: yellow; border: 1px solid black;"></span> USFWS Wetland Easement</li> <li><span style="display: inline-block; width: 15px; height: 10px; background-color: red; border: 1px solid black;"></span> USFWS Conservation Easement</li> </ul> |
|---|---|--|--|---|--|

Figure 2: Page 22 of 50  
 Route Siting Criteria  
 Center to Grand Forks Project  
 Minnkota Power Cooperative, Inc.

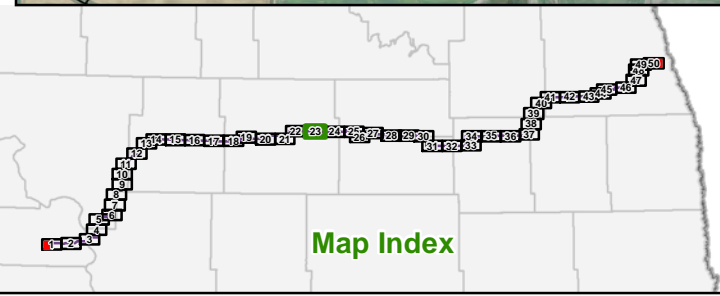
0 2,000 4,000 Feet  
 Scale 1:24,000

Aerial photography published by National Agriculture Imagery Program (NAIP), 2009.

Date: 1/19/2012  
 Path: \\msae-cis-fila\GIS\Projects\Minnkota\110900\map\_docs\PS\RouteSitingCriteria.mxd



**DISCLAIMER:**  
 USFWS easements shown on this map are current through October 2010. Data was provided by the HAPET, Office of Conservation Science, Bismarck, ND, April 2011.



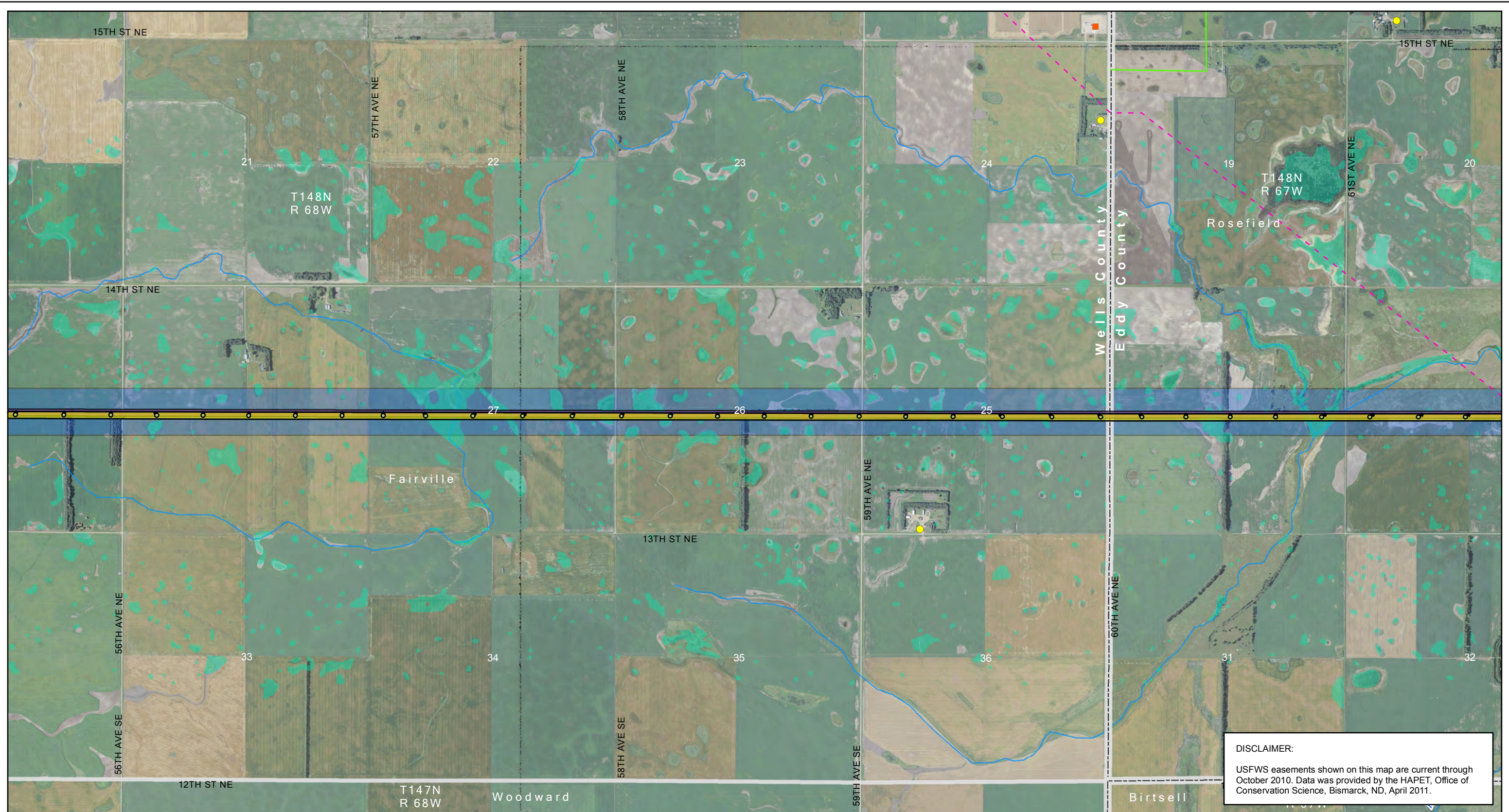
- |   |                                    |  |                    |                                    |                             |
|---|------------------------------------|--|--------------------|------------------------------------|-----------------------------|
| Project ROW - Nov. 11, 2011                       | Laydown Area                       | Gas or Oil Pipeline  | Gravel Pit or Mine | State Park, Recreation Area or WMA | Wetland                     |
| Project ROW - Jan. 13, 2012                       | Substation                         | Occupiable Home within 500 ft of Transmission Facility     | Dump or Landfill   | USFWS WPA or WDA                   | USGS Mapped Waterway        |
| Project Structure - Nov. 11, 2011                 | <b>Existing Transmission Lines</b> | Not Occupiable Home within 500 ft of Transmission Facility | Irrigated Land     | USFWS NWR                          | USFWS Grassland Easement    |
| Project Structure - Jan. 13, 2012                 | 400-kV DC                          | Occupiable Home beyond 500 ft of Transmission Facility     | Public Airport     | USBOR Land                         | USFWS Wetland Easement      |
| Proposed Modified Corridor - Nov. 18, 2011        | 345-kV AC                          | Occupiable Home beyond 500 ft of Transmission Facility     | Private Airport    | TNC Preserve                       | USFWS Conservation Easement |
| Proposed Modified Corridor Change - Jan. 13, 2012 | 250-kV DC                          | Occupiable Home beyond 500 ft of Transmission Facility     | Incorporated Area  | State Trust Land                   |                             |
| Fiber Optic Regeneration Station                  | 230-kV AC                          | School   | In-Use Railroad    | 100-year Floodplain                |                             |
|   | 115-kV or less AC                  | Business   |                    |                                    |                             |

**Figure 2: Page 23 of 50**  
**Route Siting Criteria**  
**Center to Grand Forks Project**  
**Minnkota Power Cooperative, Inc.**

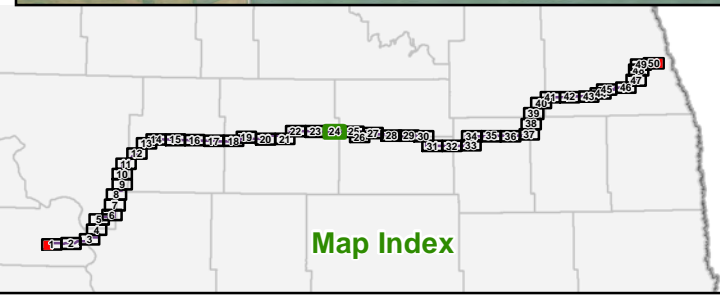
0 2,000 4,000 Feet  
 Scale 1:24,000

Aerial photography published by National Agriculture Imagery Program (NAIP), 2009.

Date: 1/19/2012  
 Path: \\mspc-cis-fila\GIS\Projects\Minnkota\110900\map\_docs\PS\RouteSitingCriteria.mxd



**DISCLAIMER:**  
 USFWS easements shown on this map are current through October 2010. Data was provided by the HAPET, Office of Conservation Science, Bismarck, ND, April 2011.



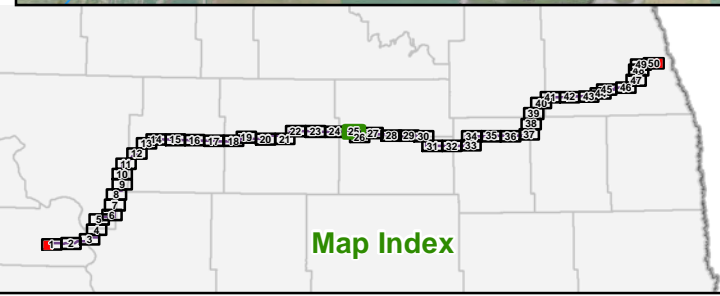
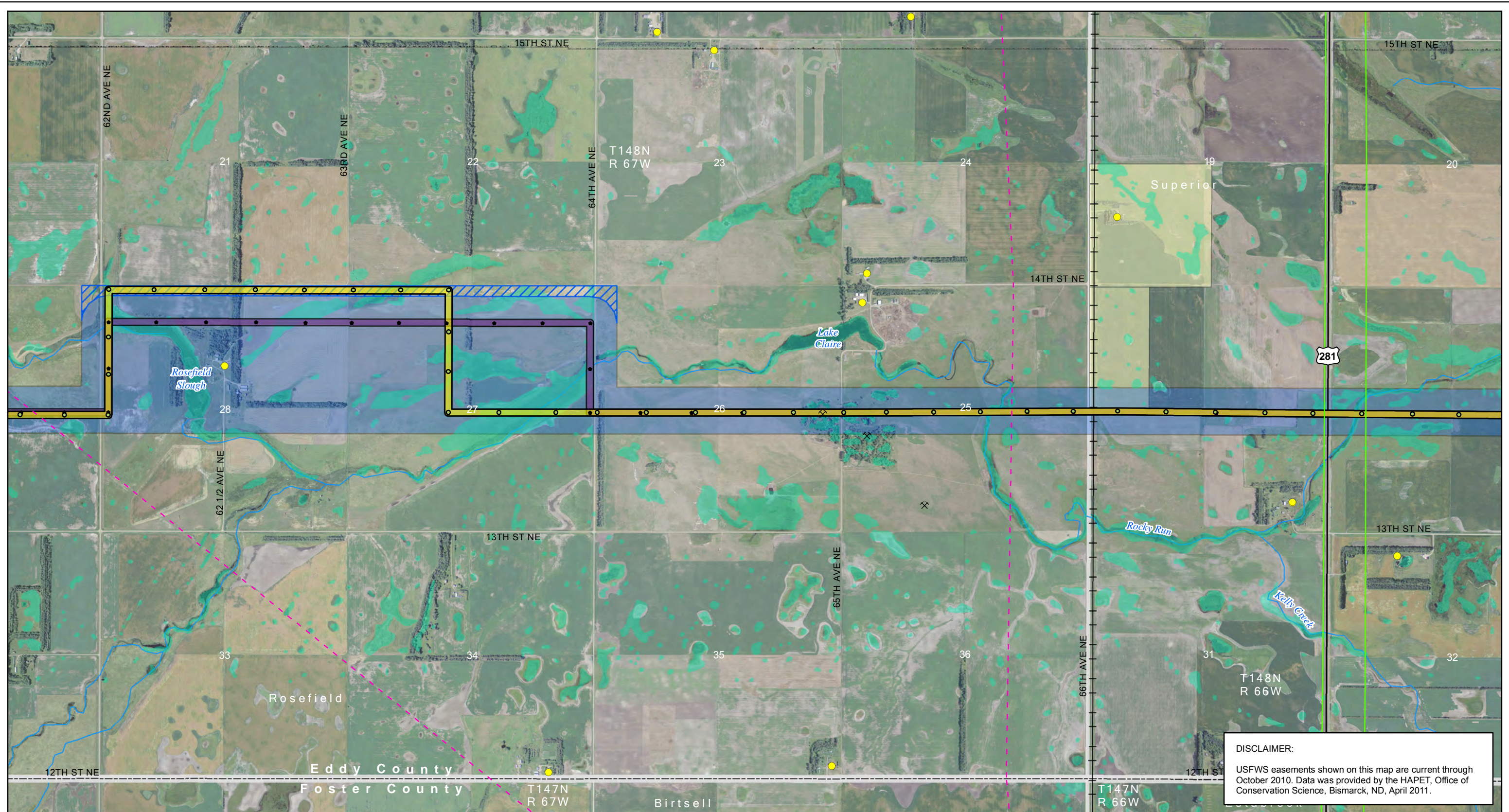
- |   |                                    |  |                    |                                    |                             |
|---|------------------------------------|--|--------------------|------------------------------------|-----------------------------|
| Project ROW - Nov. 11, 2011                       | Laydown Area                       | Gas or Oil Pipeline  | Gravel Pit or Mine | State Park, Recreation Area or WMA | Wetland                     |
| Project ROW - Jan. 13, 2012                       | Substation                         | Occupiable Home within 500 ft of Transmission Facility     | Dump or Landfill   | USFWS WPA or WDA                   | USGS Mapped Waterway        |
| Project Structure - Nov. 11, 2011                 | <b>Existing Transmission Lines</b> | Not Occupiable Home within 500 ft of Transmission Facility | Irrigated Land     | USFWS NWR                          | USFWS Grassland Easement    |
| Project Structure - Jan. 13, 2012                 | 400-kV DC                          | Occupiable Home beyond 500 ft of Transmission Facility     | Public Airport     | USBOR Land                         | USFWS Wetland Easement      |
| Proposed Modified Corridor - Nov. 18, 2011        | 345-kV AC                          | Occupiable Home beyond 500 ft of Transmission Facility     | Private Airport    | TNC Preserve                       | USFWS Conservation Easement |
| Proposed Modified Corridor Change - Jan. 13, 2012 | 250-kV DC                          | School   | Incorporated Area  | State Trust Land                   |                             |
| Fiber Optic Regeneration Station                  | 230-kV AC                          | Business   | In-Use Railroad    | 100-year Floodplain                |                             |
|   | 115-kV or less AC                  |  |                    |                                    |                             |

**Figure 2: Page 24 of 50**  
**Route Siting Criteria**  
 Center to Grand Forks Project  
 Minnkota Power Cooperative, Inc.

0 2,000 4,000 Feet  
 Scale 1:24,000

Aerial photography published by National Agriculture Imagery Program (NAIP), 2009.

Date: 1/19/2012  
 Path: \\msc-ops-fs1\GIS\Projects\Minnkota\110900\map\_docs\PS\Boulevard\Jan2012\mxd\at\CCF\BPA\_02\_11x171\_50p\_RouteSitingCriteria.mxd

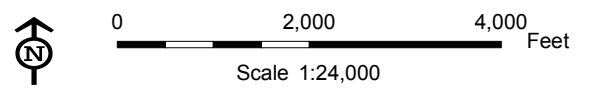


Aerial photography published by National Agriculture Imagery Program (NAIP), 2009.

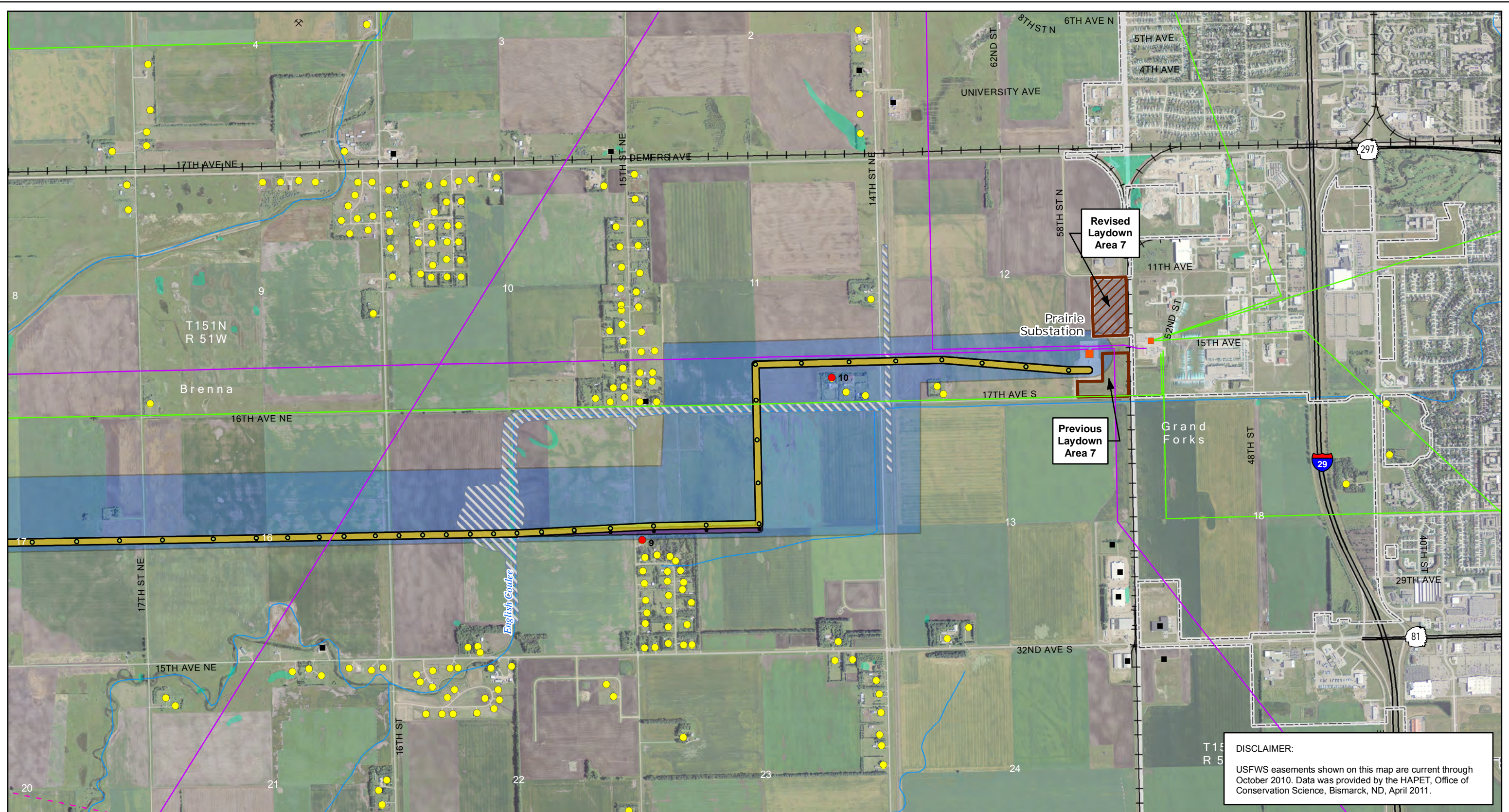
- |  |  |   |  |  |   |
|--|--|---|--|--|---|
| <ul style="list-style-type: none"> <li><span style="display: inline-block; width: 15px; height: 10px; background-color: purple; border: 1px solid black;"></span> Project ROW - Nov. 11, 2011</li> <li><span style="display: inline-block; width: 15px; height: 10px; background-color: yellow; border: 1px solid black;"></span> Project ROW - Jan. 13, 2012</li> <li><span style="display: inline-block; width: 10px; height: 10px; background-color: black; border-radius: 50%;"></span> Project Structure - Nov. 11, 2011</li> <li><span style="display: inline-block; width: 10px; height: 10px; background-color: black; border-radius: 50%;"></span> Project Structure - Jan. 13, 2012</li> <li><span style="display: inline-block; width: 15px; height: 10px; background-color: lightblue; border: 1px solid blue;"></span> Proposed Modified Corridor - Nov. 18, 2011</li> <li><span style="display: inline-block; width: 15px; height: 10px; background-color: lightblue; border: 1px solid blue; border-style: dashed;"></span> Proposed Modified Corridor Change - Jan. 13, 2012</li> <li><span style="display: inline-block; width: 10px; height: 10px; background-color: lightblue; border: 1px solid blue; border-radius: 50%;"></span> Fiber Optic Regeneration Station</li> </ul> | <ul style="list-style-type: none"> <li><span style="display: inline-block; width: 15px; height: 10px; border: 2px solid orange;"></span> Laydown Area</li> <li><span style="display: inline-block; width: 10px; height: 10px; background-color: orange; border-radius: 50%;"></span> Substation</li> <li>Existing Transmission Lines</li> <li><span style="display: inline-block; width: 15px; border-bottom: 2px solid orange;"></span> 400-kV DC</li> <li><span style="display: inline-block; width: 15px; border-bottom: 2px solid red;"></span> 345-kV AC</li> <li><span style="display: inline-block; width: 15px; border-bottom: 2px solid green;"></span> 250-kV DC</li> <li><span style="display: inline-block; width: 15px; border-bottom: 2px solid purple;"></span> 230-kV AC</li> <li><span style="display: inline-block; width: 15px; border-bottom: 2px solid green;"></span> 115-kV or less AC</li> </ul> | <ul style="list-style-type: none"> <li><span style="display: inline-block; width: 15px; border-bottom: 1px dashed magenta;"></span> Gas or Oil Pipeline</li> <li><span style="display: inline-block; width: 10px; height: 10px; background-color: red; border-radius: 50%;"></span> Occupiable Home within 500 ft of Transmission Facility</li> <li><span style="display: inline-block; width: 10px; height: 10px; background-color: orange; border-radius: 50%;"></span> Not Occupiable Home within 500 ft of Transmission Facility</li> <li><span style="display: inline-block; width: 10px; height: 10px; background-color: yellow; border-radius: 50%;"></span> Occupiable Home beyond 500 ft of Transmission Facility</li> <li><span style="display: inline-block; width: 10px; height: 10px; background-color: black; border-radius: 50%;"></span> School</li> <li><span style="display: inline-block; width: 10px; height: 10px; background-color: black; border-radius: 50%;"></span> Business</li> </ul> | <ul style="list-style-type: none"> <li><span style="display: inline-block; width: 10px; height: 10px; border: 1px dashed gray;"></span> Gravel Pit or Mine</li> <li><span style="display: inline-block; width: 10px; height: 10px; background-color: brown; border-radius: 50%;"></span> Dump or Landfill</li> <li><span style="display: inline-block; width: 10px; height: 10px; background-color: green; border-radius: 50%;"></span> Irrigated Land</li> <li><span style="display: inline-block; width: 10px; height: 10px; background-color: blue; border-radius: 50%;"></span> Public Airport</li> <li><span style="display: inline-block; width: 10px; height: 10px; background-color: lightblue; border-radius: 50%;"></span> Private Airport</li> <li><span style="display: inline-block; width: 10px; height: 10px; border: 1px solid gray;"></span> Incorporated Area</li> <li><span style="display: inline-block; width: 10px; height: 10px; border-bottom: 1px solid gray;"></span> In-Use Railroad</li> </ul> | <ul style="list-style-type: none"> <li><span style="display: inline-block; width: 15px; height: 10px; background-color: orange; border: 1px solid orange;"></span> State Park, Recreation Area or WMA</li> <li><span style="display: inline-block; width: 15px; height: 10px; background-color: green; border: 1px solid green;"></span> USFWS WPA or WDA</li> <li><span style="display: inline-block; width: 15px; height: 10px; background-color: purple; border: 1px solid purple;"></span> USFWS NWR</li> <li><span style="display: inline-block; width: 15px; height: 10px; background-color: yellow; border: 1px solid yellow;"></span> USBOR Land</li> <li><span style="display: inline-block; width: 15px; height: 10px; background-color: pink; border: 1px solid pink;"></span> TNC Preserve</li> <li><span style="display: inline-block; width: 15px; height: 10px; background-color: orange; border: 1px solid orange;"></span> State Trust Land</li> <li><span style="display: inline-block; width: 15px; height: 10px; background-color: lightblue; border: 1px solid lightblue;"></span> 100-year Floodplain</li> </ul> | <ul style="list-style-type: none"> <li><span style="display: inline-block; width: 15px; height: 10px; background-color: lightblue;"></span> Wetland</li> <li><span style="display: inline-block; width: 15px; height: 10px; border-bottom: 1px solid blue;"></span> USGS Mapped Waterway</li> <li><span style="display: inline-block; width: 15px; height: 10px; background-color: lightgreen;"></span> USFWS Grassland Easement</li> <li><span style="display: inline-block; width: 15px; height: 10px; background-color: yellow;"></span> USFWS Wetland Easement</li> <li><span style="display: inline-block; width: 15px; height: 10px; background-color: red;"></span> USFWS Conservation Easement</li> </ul> |
|--|--|---|--|--|---|

DISCLAIMER:  
 USFWS easements shown on this map are current through October 2010. Data was provided by the HAPET, Office of Conservation Science, Bismarck, ND, April 2011.

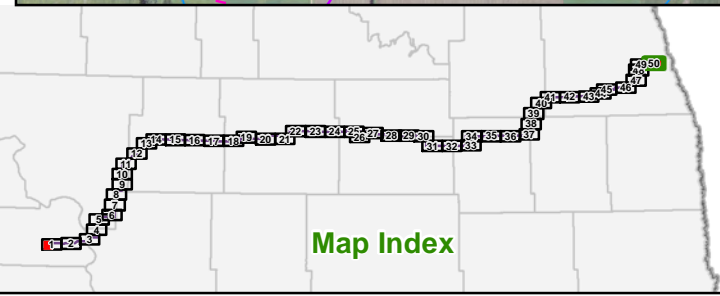
Figure 2: Page 25 of 50  
 Route Siting Criteria  
 Center to Grand Forks Project  
 Minnkota Power Cooperative, Inc.



Date: 1/19/2012  
 Path: \\mspc-qls-fila\GIS\Projects\Minnkota\110900\map\_docs\PS\Browns\Jan2012\mxd\at\CCF\BPA\_02\_11x17L\_50p\_RouteSitingCriteria.mxd



**DISCLAIMER:**  
 USFWS easements shown on this map are current through October 2010. Data was provided by the HAPET, Office of Conservation Science, Bismarck, ND, April 2011.



- |   |                             |  |                    |                                    |                             |
|---|-----------------------------|--|--------------------|------------------------------------|-----------------------------|
| Project ROW - Nov. 11, 2011                       | Laydown Area                | Gas or Oil Pipeline  | Gravel Pit or Mine | State Park, Recreation Area or WMA | Wetland                     |
| Project ROW - Jan. 13, 2012                       | Substation                  | Occupiable Home within 500 ft of Transmission Facility     | Dump or Landfill   | USFWS WPA or WDA                   | USGS Mapped Waterway        |
| Project Structure - Nov. 11, 2011                 | Existing Transmission Lines | Not Occupiable Home within 500 ft of Transmission Facility | Irrigated Land     | USFWS NWR                          | USFWS Grassland Easement    |
| Project Structure - Jan. 13, 2012                 | 400-kV DC                   | Occupiable Home beyond 500 ft of Transmission Facility     | Public Airport     | USBOR Land                         | USFWS Wetland Easement      |
| Proposed Modified Corridor - Nov. 18, 2011        | 345-kV AC                   | School   | Private Airport    | TNC Preserve                       | USFWS Conservation Easement |
| Proposed Modified Corridor Change - Jan. 13, 2012 | 250-kV DC                   | Business   | Incorporated Area  | State Trust Land                   |                             |
| Fiber Optic Regeneration Station                  | 230-kV AC                   |  | In-Use Railroad    | 100-year Floodplain                |                             |
|   | 115-kV or less AC           |  |                    |                                    |                             |

**Figure 2: Page 50 of 50**  
**Route Siting Criteria**  
**Center to Grand Forks Project**  
**Minnkota Power Cooperative, Inc.**

0 2,000 4,000 Feet  
 Scale 1:24,000

Aerial photography published by National Agriculture Imagery Program (NAIP), 2009.